

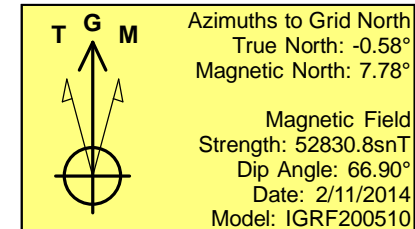
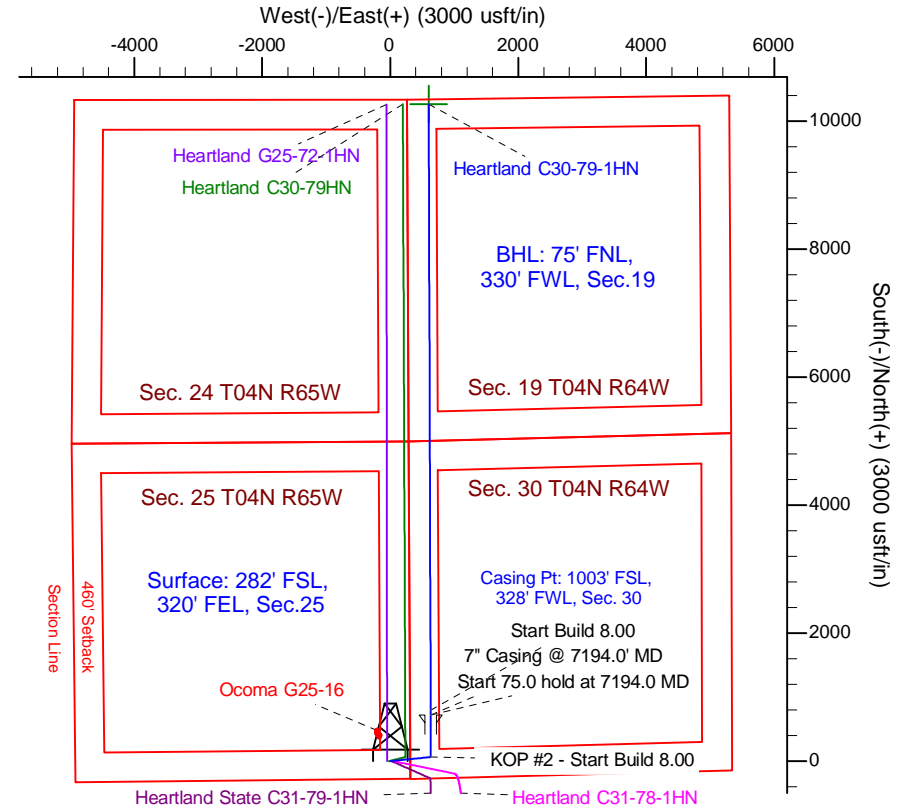
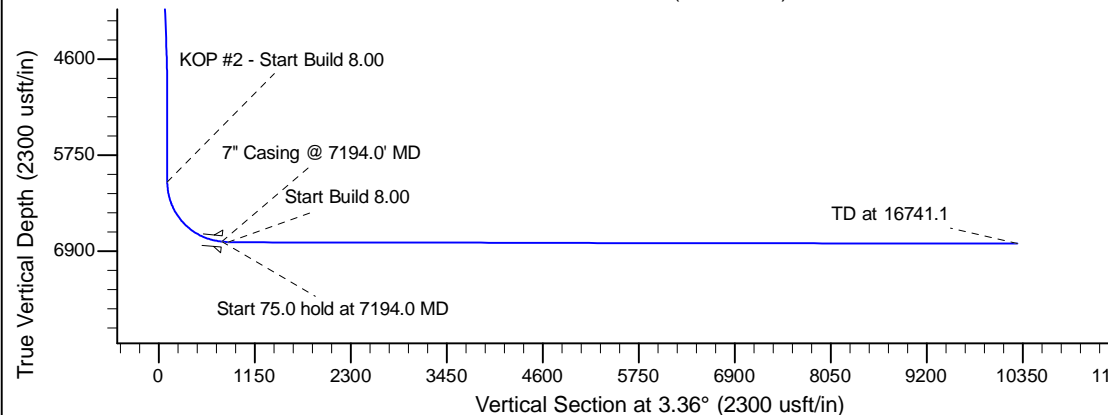
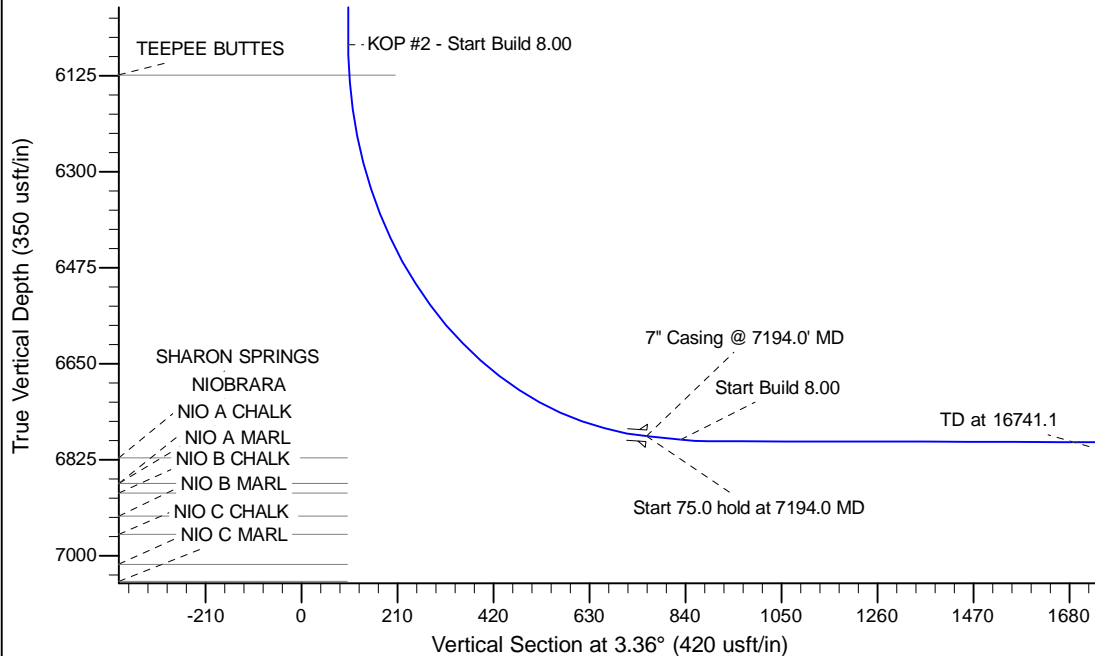
Project: Wattenberg Field
 Site: G (Sec.25-T04N-R65W) Weld County, CO
 Well: Heartland C30-79-1HN
 Wellbore: Wellbore #1
 Design: APD - Rev 0

Northern Region Drilling - Working

Geodetic System: US State Plane 1983
 Datum: North American Datum 1983
 Ellipsoid: GRS 1980
 Zone: Colorado Northern Zone
 System Datum: Mean Sea Level

SECTION DETAILS

Sec	MD	Inc	Azi	TVD	+N/-S	+E/-W	Dleg	TFace	VSec	Target
1	0.0	0.00	0.00	0.0	0.0	0.0	0.00	0.00	0.0	
2	1500.0	0.00	0.00	1500.0	0.0	0.0	0.00	0.00	0.0	
3	2101.3	12.03	84.16	2096.9	6.4	62.5	2.00	84.16	10.1	
4	4561.5	12.03	84.16	4503.1	58.6	572.5	0.00	0.00	92.0	
5	5162.8	0.00	0.00	5100.0	65.0	635.0	2.00	180.00	102.1	
6	6131.5	0.00	0.00	6068.7	65.0	635.0	0.00	0.00	102.1	
7	7194.0	85.00	359.81	6782.2	718.8	632.9	8.00	359.81	754.6	
8	7269.0	85.00	359.81	6788.8	793.5	632.6	0.00	0.00	829.2	
9	7330.3	89.90	359.81	6791.5	854.7	632.4	8.00	0.00	890.2	
10	16741.1	89.90	359.81	6807.9	10265.4	601.9	0.00	0.00	10283.1	Heartland C30-79-1HN BHL 75'FNL, 330'FWL



WELL DETAILS: Heartland C30-79-1HN					
Ground Level: 4845.0					
0.0	0.0	1344918.57	3250139.86	40.276730	-104.603480
Plan: APD - Rev 0 (Heartland C30-79-1HN/Wellbore #1)					
Created By: Shailey Jewell			Date: 15:32, February 11 2014		

OK to submit with 2A as per Noble Drilling
 2/12/2014 10:48