


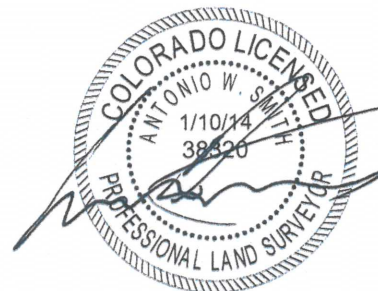
 PROPOSED WELL
 EXISTING WELL
 FOUND MONUMENT
 CALCULATED POSITION

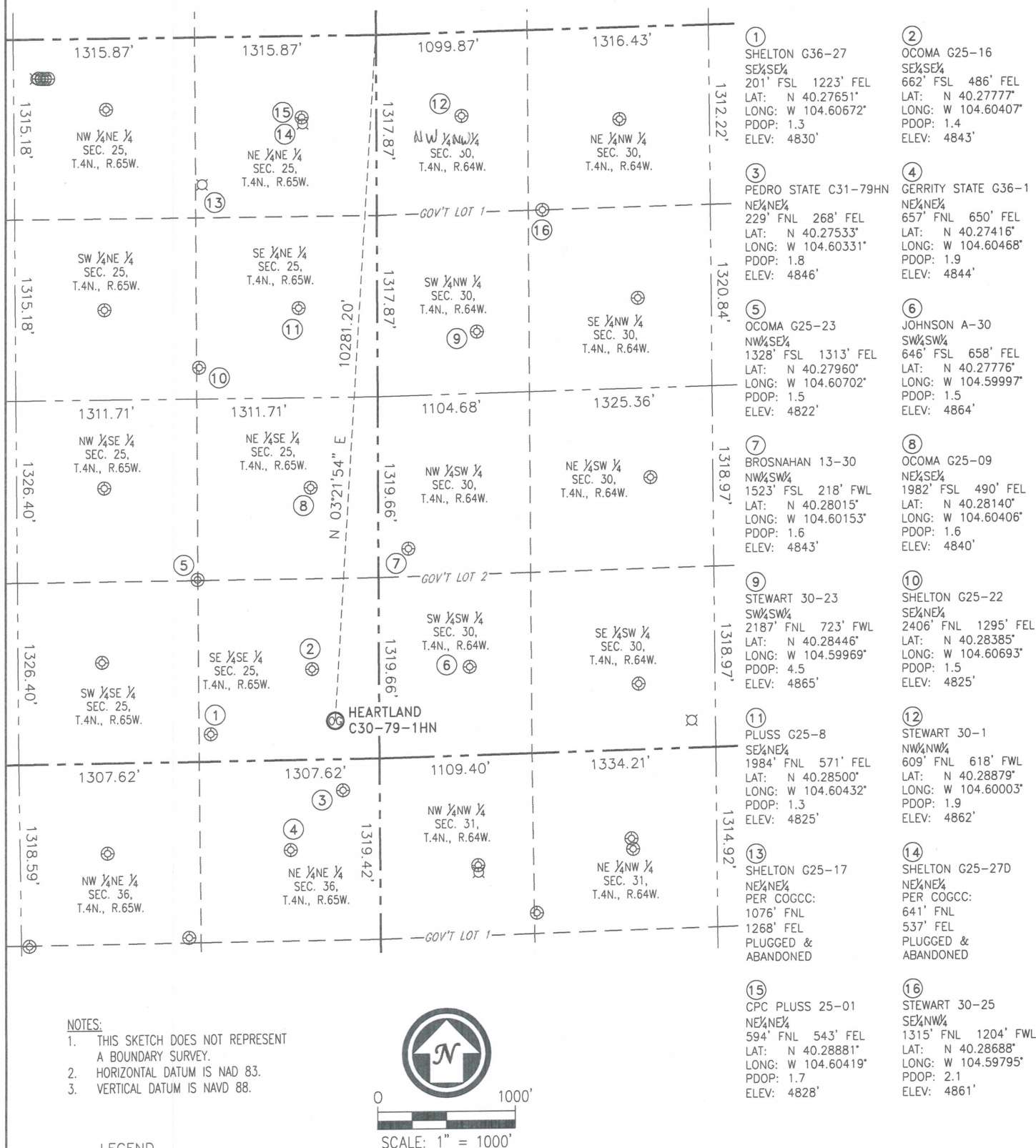


ANTONIO W. SMITH, PLS 38320
FOR AND ON BEHALF OF R&R DATE: 01/10/2014
ENGINEERS-SURVEYORS, INC. JOB NO.: NE13301

SITE SKETCH

HEARTLAND C30-79-1HN
(SHEET 1 OF 2)

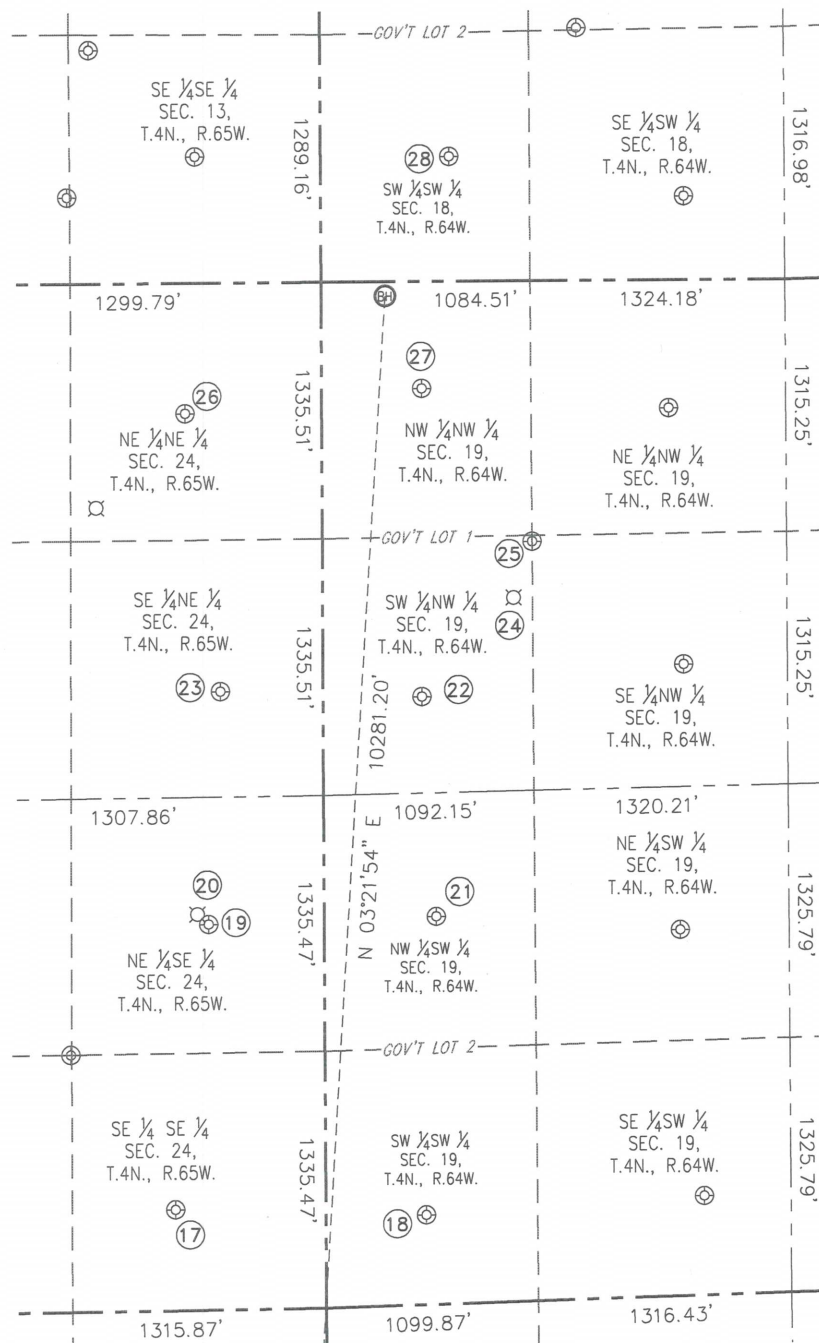
SECTION: 25
TOWNSHIP: 4N
RANGE: 65W



DATE: 01/10/2014
JOB NO.: NE13301

SITE SKETCH **HEARTLAND C30-79-1HN** **(SHEET 2 OF 2)**

SECTION: 25
 TOWNSHIP: 4N
 RANGE: 65W



17
 BURKE RG 24-16
 SE 1/4 SE 1/4
 525' FSL 779' FEL
 LAT: N 40.29189°
 LONG: W 104.60502°
 PDOP: 1.4
 ELEV: 4834'

18
 VICTOR C19-13
 SW 1/4 SW 1/4
 468' FSL 520' FWL
 LAT: N 40.29174°
 LONG: W 104.60036°
 PDOP: 1.7
 ELEV: 4862'

19
 BURKE 24-3
 NE 1/4 SE 1/4
 2010' FSL 600' FEL
 LAT: N 40.29596°
 LONG: W 104.60435°
 PDOP: 1.3
 ELEV: 4830'

20
 BURKE 24-3S
 NE 1/4 SE 1/4
 PER COGCC:
 2063' FSL
 658' FEL
 PLUGGED &
 ABANDONED

21
 VICTOR C19-12
 NW 1/4 SW 1/4
 2022' FSL 579' FEL
 LAT: N 40.29601°
 LONG: W 104.60012°
 PDOP: 2.1
 ELEV: 4861'

22
 FREEDOM ONE C19-5
 SW 1/4 NW 1/4
 2162' FNL 512' FWL
 LAT: N 40.299715°
 LONG: W 104.60034°
 PDOP: 1.8
 ELEV: 4859'

23
 BURKE RG 24-8
 SE 1/4 NE 1/4
 2127' FNL 532' FEL
 LAT: N 40.29928°
 LONG: W 104.60408°
 PDOP: 1.2
 ELEV: 4836'

24
 SUNSET MINE NO.1
 SW 1/4 NW 1/4
 PER COGCC:
 1650' FNL
 990' FWL
 PLUGGED &
 ABANDONED

25
 BROOMFIELD 18-19
 SW 1/4 NW 1/4
 1358' FNL 1088' FWL
 LAT: N 40.30134°
 LONG: W 104.59826°
 PDOP: 2.3
 ELEV: 4869'

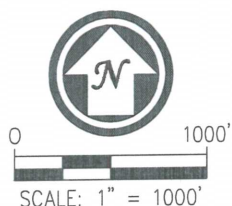
26
 API 24-1
 NE 1/4 NE 1/4
 680' FNL 708' FEL
 LAT: N 40.30325°
 LONG: W 104.60468°
 PDOP: 2.0
 ELEV: 4837'

27
 FREEDOM TWO C19-4
 NW 1/4 NW 1/4
 557' FNL 519' FWL
 LAT: N 40.30356°
 LONG: W 104.60028°
 PDOP: 2.6
 ELEV: 4857'

28
 FARR I
 SW 1/4 SW 1/4
 651' FSL 665' FEL
 LAT: 40.30687°
 LONG: 104.59973°
 PDOP: 3.1
 ELEV: 4848

NOTES:

1. THIS SKETCH DOES NOT REPRESENT A BOUNDARY SURVEY.
2. HORIZONTAL DATUM IS NAD 83.
3. VERTICAL DATUM IS NAVD 88.



LEGEND

- ⊙ PROPOSED WELL
- ⊙ BOTTOM HOLE
- ⊙ EXISTING WELL
- ⊙ ABANDONED WELL

DATE: 01/10/2014
 JOB NO.: NE13301