

The Road to Excellence Starts with Safety

Sold To #: 300721	Ship To #: 3123635	Quote #:	Sales Order #: 900976748
Customer: WPX ENERGY ROCKY MOUNTAIN LLC-EBUS	Customer Rep:		
Well Name: RWF	Well #: 422-4	API/UWI #:	
Field: RULISON	City (SAP): RIFLE	County/Parish: Garfield	State: Colorado
Contractor: NABORS 574	Rig/Platform Name/Num: NABORS 574		
Job Purpose: Cement Surface Casing			
Well Type: Development Well	Job Type: Cement Surface Casing		
Sales Person: MAYO, MARK	Srv Supervisor: CARTER, ERIC	MBU ID Emp #: 345598	

Job Personnel

HES Emp Name	Exp Hrs	Emp #	HES Emp Name	Exp Hrs	Emp #	HES Emp Name	Exp Hrs	Emp #
CARTER, ERIC Earl	0.0	345598	DAVIS, JOSEPH	0.0	558939	LINN, PAUL Andrew	0.0	479143
LOBATO, MAX Abraham	0.0	555409						

Equipment

HES Unit #	Distance-1 way	HES Unit #	Distance-1 way	HES Unit #	Distance-1 way	HES Unit #	Distance-1 way
10713212	60 mile	10872429	60 mile	10998512	60 mile	11583933	60 mile
11808847	60 mile						

Job Hours

Date	On Location Hours	Operating Hours	Date	On Location Hours	Operating Hours	Date	On Location Hours	Operating Hours
TOTAL								

Total is the sum of each column separately

Job

Job Times

Formation Name	Formation Depth (MD)	Top	Bottom	Called Out	Date	Time	Time Zone
Form Type			BHST	On Location	18 - Dec - 2013	12:00	MST
Job depth MD	2572. ft		Job Depth TVD	2572. ft	18 - Dec - 2013	16:00	MST
Water Depth			Wk Ht Above Floor	5. ft	19 - Dec - 2013	05:01	MST
Perforation Depth (MD)	From		To	Job Completed	19 - Dec - 2013	06:41	MST
				Departed Loc	19 - Dec - 2013	08:00	MST

Well Data

Description	New / Used	Max pressure psig	Size in	ID in	Weight lbm/ft	Thread	Grade	Top MD ft	Bottom MD ft	Top TVD ft	Bottom TVD ft
OPEN HOLE				13.5				.	2582.	.	2582.
9.625 IN SURFACE CASING	Mixed		9.625	9.001	32.3		H-40	.	2572.	.	2572.

Tools and Accessories

Type	Size	Qty	Make	Depth	Type	Size	Qty	Make	Depth	Type	Size	Qty	Make
Guide Shoe					Packer					Top Plug			
Float Shoe					Bridge Plug					Bottom Plug			
Float Collar					Retainer					SSR plug set			
Insert Float										Plug Container			
Stage Tool										Centralizers			

Miscellaneous Materials

Gelling Agt		Conc		Surfactant		Conc		Acid Type		Qty		Conc	%
Treatment Fld		Conc		Inhibitor		Conc		Sand Type		Size		Qty	

Fluid Data

Stage/Plug #: 1	Fluid #	Stage Type	Fluid Name	Qty	Qty uom	Mixing Density lbm/gal	Yield ft ³ /sk	Mix Fluid Gal/sk	Rate bbl/min	Total Mix Fluid Gal/sk

Stage/Plug #: 1

Stage/Plug #: 1									
Fluid #	Stage Type	Fluid Name	Qty	Qty uom	Mixing Density lbm/gal	Yield ft ³ /sk	Mix Fluid Gal/sk	Rate bbl/min	Total Mix Fluid Gal/sk
1	Fresh Water Spacer		20.00	bbl	.	.0	.0	.0	
2	VersaCem GJ1 Lead Cement	VARICEM (TM) CEMENT (452009)	455.0	sacks	12.3	2.38	13.75		13.75
13.75 Gal		FRESH WATER							
3	VersaCem GJ1 Tail Cement	VARICEM (TM) CEMENT (452009)	175.0	sacks	12.8	2.11	11.75		11.75
11.75 Gal		FRESH WATER							
4	Fresh Water Displacement		199.00	bbl	.	.0	.0	.0	
Calculated Values		Pressures		Volumes					
Displacement		Shut In: Instant		Lost Returns		Cement Slurry		Pad	
Top Of Cement		5 Min		Cement Returns		Actual Displacement		Treatment	
Frac Gradient		15 Min		Spacers		Load and Breakdown		Total Job	
Rates									
Circulating		Mixing		Displacement		Avg. Job			
Cement Left In Pipe	Amount	39 ft	Reason	Shoe Joint					
Frac Ring # 1 @	ID		Frac ring # 2 @	ID		Frac Ring # 3 @	ID		Frac Ring # 4 @
The Information Stated Herein Is Correct				Customer Representative Signature					

The Road to Excellence Starts with Safety

Sold To #: 300721	Ship To #: 3123635	Quote #:	Sales Order #: 900976748
Customer: WPX ENERGY ROCKY MOUNTAIN LLC-EBUS		Customer Rep:	
Well Name: RWF	Well #: 422-4	API/UWI #:	
Field: RULISON	City (SAP): RIFLE	County/Parish: Garfield	State: Colorado
Legal Description:			
Lat:		Long:	
Contractor: NABORS 574		Rig/Platform Name/Num: NABORS 574	
Job Purpose: Cement Surface Casing			Ticket Amount:
Well Type: Development Well		Job Type: Cement Surface Casing	
Sales Person: MAYO, MARK		Srv Supervisor: CARTER, ERIC	MBU ID Emp #: 345598

Activity Description	Date/Time	Cht #	Rate bbl/min	Volume bbl		Pressure psig		Comments
				Stage	Total	Tubing	Casing	
Call Out	12/18/2013 12:00							
Depart Yard Safety Meeting	12/18/2013 14:50							ATTENDED BY ALL HES CREW
Crew Leave Yard	12/18/2013 15:00							
Arrive At Loc	12/18/2013 16:00							RIG PULLING DRILL PIPE
Assessment Of Location Safety Meeting	12/19/2013 03:20							ATTENDED BY ALL HES CREW
Other	12/19/2013 03:30							SPOT EQUIPMENT
Pre-Rig Up Safety Meeting	12/19/2013 03:50							ATTENDED BY ALL HES CREW
Rig-Up Equipment	12/19/2013 04:00							
Pre-Job Safety Meeting	12/19/2013 04:40							ATTENDED BY ALL HES CREW, RIG CREW AND COMPANY REP
Start Job	12/19/2013 05:01							TP 2572', TD 2582', SJ 39', FC 2533', MW 10.6 PPG, CASING 9.625", 32.3#, H-40, CENTRALIZERS 12 TOTAL, HOLE 13.5", RIG CIRCULATED FOR 1 HR PRIOR TO JOB
Other	12/19/2013 05:01		2	2			77.0	FILL LINES
Test Lines	12/19/2013 05:06							PRESSURED UP TO 3648 PSI, PRESSURE HELD
Pump Spacer	12/19/2013 05:11		4	20			175.0	FRESH WATER
Activity Description	Date/Time	Cht	Rate bbl/min	Volume bbl		Pressure psig		Comments

Sold To #: 300721

Ship To #: 3123635

Quote #:

Sales Order #: 900976748

SUMMIT Version: 7.3.0109

Friday, January 03, 2014 10:03:00

Cementing Job Log

		#		Stage	Total	Tubing	Casing	
Pump Lead Cement	12/19/2013 05:19		8	192.9			480.0	455 SKS VARICEM MIXED AT 12.3 PPG, 2.38 YIELD, 13.75 GL/SK
Pump Tail Cement	12/19/2013 05:46		8	65.8			440.0	175 SKS VARICEM MIXED AT 12.8 PPG, 2.11 YIELD, 11.75 GL/SK
Shutdown	12/19/2013 05:55							
Drop Top Plug	12/19/2013 05:59							PLUG LAUNCHED
Pump Displacement	12/19/2013 06:00		10	80			650.0	FRESH WATER
Slow Rate	12/19/2013 06:13		0.5	10			200.0	SLOWED RATE TO ALLOW VAC TRUCK TO CATCH UP
Resume	12/19/2013 06:26		10	99.3			930.0	
Slow Rate	12/19/2013 06:36		2	10			550.0	
Bump Plug	12/19/2013 06:37						1150. 0	PLUG LANDED
Check Floats	12/19/2013 06:40							FLOATS HELD
End Job	12/19/2013 06:41							GOOD CIRCULATION THROUGH OUT JOB, PIPE NOT MOVED DURING JOB, 80 BBLS CEMENT TO SURFACE
Post-Job Safety Meeting (Pre Rig-Down)	12/19/2013 06:45							ATTENDED BY ALL HES CREW
Rig-Down Equipment	12/19/2013 06:50							
Depart Location Safety Meeting	12/19/2013 07:50							ATTENDED BY ALL HES CREW
Crew Leave Location	12/19/2013 08:00							THANK YOU FOR USING HALLIBURTON CEMENT, ERIC CARTER AND CREW.

HALLIBURTON

Water Analysis Report

Company: WPX
Submitted by: ERIC CARTER
Attention: J.Trout
Lease: NABORS 574
Well #: RWF 422-4

Date: 1/3/2014
Date Rec.: 1/3/2014
S.O.#: 900976748
Job Type: SURFACE

Specific Gravity	<i>MAX</i>	<i>1</i>
pH	<i>8</i>	<i>7</i>
Potassium (K)	<i>5000</i>	<i>125 Mg / L</i>
Hardness	<i>500</i>	<i>250 Mg / L</i>
Iron (FE2)	<i>300</i>	<i>0 Mg / L</i>
Chlorides (Cl)	<i>3000</i>	<i>500 Mg / L</i>
Sulfates (SO ₄)	<i>1500</i>	<i><200 Mg / L</i>
Temp	<i>40-80</i>	<i>40 Deg</i>
Total Dissolved Solids		<i>650 Mg / L</i>

Respectfully: ERIC CARTER

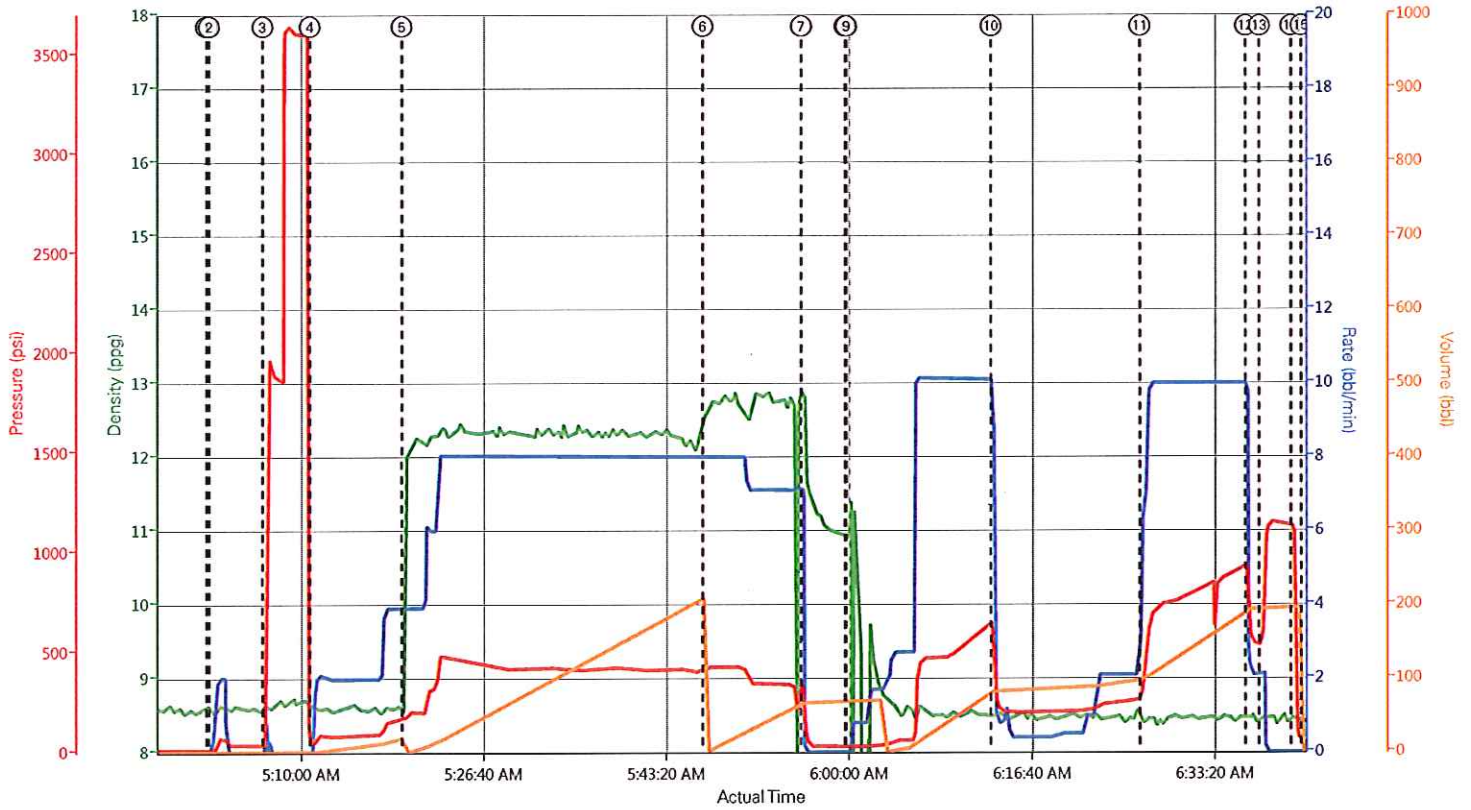
Title: CEMENTING SUPERVISOR

Location: Grand Junction, CO

NOTICE:

This report is limited to the described sample tested. Any person using or relying on this report agrees that Halliburton shall not be liable for any loss or damage whether due to act or omission resulting from such report or it

WPX - RWF 422-4 - SURFACE



DH Density (ppg) 0.12 Comb Pump Rate (bbl/min) 3.6 PS Pump Press (psi) 42 Pump Stg Tot (bbl) 45.7

① Start Job 8.62;0;9,0	④ Pump Spacer 8.6;0;34;0	⑦ Shutdown 12.69;0.2;212;67.2	⑩ Slow Rate 8.47;6.2;546;83	⑬ Bump Plug 8.51;2.1;544;195.7
② Fill Lines 8.56;0;9,0	⑤ Pump Lead Cement 10.45;3.9;168;0	⑧ Drop Top Plug 10.92;0;29;67.2	⑪ Resume 8.41;6.6;380;93.7	⑭ Check Floats 8.46;0;1102;196.3
③ Test Lines 8.63;0.3;35;2	⑥ Pump Tail Cement 12.57;8;418;0.1	⑨ Pump Displacement 10.9;0.2;29;67.2	⑫ Slow Rate 8.49;2.6;662;193	⑮ End Job n/a;n/a;n/a;n/a

▼ HALLIBURTON | iCem® Service

Created: 2013-12-19 01:49:39, Version: 2.0 606

Edit

Customer: WPX ENERGY ROCKY MOUNTAIN LLC-
EBUS

Job Date: 12/19/2013 1:51:31 AM

Well: RWF 422-4

Representative: GARY VALLAD

Sales Order #: 900976748

ERIC CARTER: ELITE 7/ANDREW LINN