

**ANADARKO PETROLEUM CORP - EBUS
DO NOT MAIL - PO BOX 4995
THE WOODLANDS, Texas**

NRC 4C-8HZ

Majors 42

Post Job Summary **Cement Surface Casing**

Date Prepared: 4/14/2014
Version: 1

Service Supervisor: BARRAS, JOSEPH

Submitted by: PRUDHOMME, JOSHUA

HALLIBURTON

HALLIBURTON

Wellbore Geometry

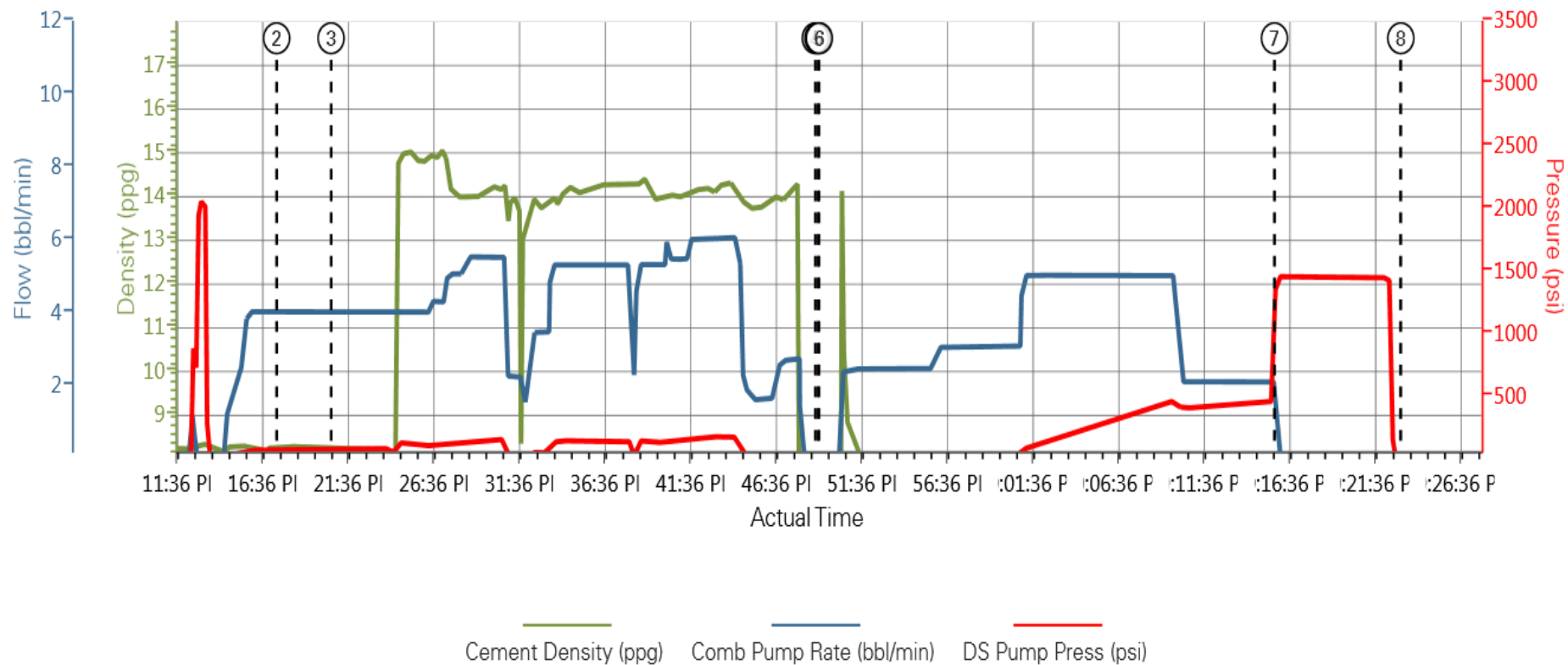
Job Tubulars					MD		Shoe Joint Length ft
Type	Description	Size in	ID in	Wt lbm/ft	Top ft	Bottom ft	
Casing	9 5/8" Surface Casing	9.63	8.921	36.00	0.00	1,231.00	45.00
Open Hole Section	13 1/2" Open Hole Section		13.500		0.00	1,231.00	0.00

HALLIBURTON

Pumping Schedule

Stage /Plug #	Fluid #	Fluid Type	Fluid Name	Surface Density lbm/gal	Avg Rate bbl/min	Surface Volume	Downhole Volume
1	1	Spacer	Fresh Water Spacer	8.33	4.0	10.0 bbl	10.0 bbl
1	2	Spacer	Mud Flush	8.40	4.0	12.0 bbl	12.0 bbl
1	1	Spacer	Fresh Water Spacer	8.33	4.0	10.0 bbl	10.0 bbl
1	3	Cement Slurry	SwiftCem B2	14.20	5.0	447.0 sacks	447.0 sacks

ANADARKO NRC 4C-8HZ SURFACE



— Cement Density (ppg) — Comb Pump Rate (bbl/min) — DS Pump Press (psi)

Service Supervisor Reports

Job Log

Date/Time	Chart #	Activity Code	Pump Rate	Cum Vol	Pump		Pressure (psig)	Comments
01/18/2014 17:30		Arrive at Location from Service Center						rig running casing
01/18/2014 17:45		Rig-Up Equipment						move HES into position for job
01/18/2014 18:30		Rig-Up Completed						
01/18/2014 20:30		Safety Meeting - Pre Job						with HES and rig crew
01/18/2014 21:09		Start Job						
01/18/2014 21:10		Test Lines						test lines to 2000 psi with no visible leaks
01/18/2014 21:17		Pump Spacer 1	4	10			78.0	rig water
01/18/2014 21:20		Pump Spacer 2	4	12			78.0	rig water with mud flush
01/18/2014 21:25		Pump Spacer 1	4	10			81.0	rig water
01/18/2014 21:27		Pump Cement	5	119			148.0	mixed with rig water @ 14.2 ppg / 447 sks of swift cem 1.53 yield / 7.66 gal/sk
01/18/2014 21:32		Pump Displacement	4	90			467.0	rig water with cement to surface @ 80 bbl into displacing
01/18/2014 21:49		Shutdown						
01/18/2014 21:49		Drop Top Plug						preloaded and witnessed by company man
01/18/2014 22:15		Bump Plug	2				1458.0	
01/18/2014 22:20		Check Floats						held with 1 bbl back
01/18/2014 22:23		End Job						
01/18/2014 22:25		Rig-Down Equipment						
01/18/2014 23:10		Return to Service Center from Job						

The Road to Excellence Starts with Safety

Sold To #: 300466		Ship To #: 3205604		Quote #:		Sales Order #: 901050306	
Customer: ANADARKO PETROLEUM CORP - EBUS				Customer Rep: Hersh, Larry			
Well Name: NRC			Well #: 4C-8HZ		API/UWI #: 05-123-38411		
Field: WATTENBERG		City (SAP): IONE		County/Parish: Weld		State: Colorado	
Lat: N 40.059 deg. OR N 40 deg. 3 min. 33.624 secs.				Long: W 104.921 deg. OR W -105 deg. 4 min. 42.665 secs.			
Contractor: Majors			Rig/Platform Name/Num: Majors 42				
Job Purpose: Cement Surface Casing							
Well Type: Development Well				Job Type: Cement Surface Casing			
Sales Person: GREGORY, JON			Srvc Supervisor: BARRAS, JOSEPH			MBU ID Emp #: 405168	

Job Personnel

HES Emp Name	Exp Hrs	Emp #	HES Emp Name	Exp Hrs	Emp #	HES Emp Name	Exp Hrs	Emp #
BANUELOS, GUADALUPE	0.0	372277	BARRAS, JOSEPH Corey	0.0	405168	MAYFIELD, BYRON L	0.0	528751

Equipment

HES Unit #	Distance-1 way	HES Unit #	Distance-1 way	HES Unit #	Distance-1 way	HES Unit #	Distance-1 way
10867419C	10 mile	11526488	10 mile	11562570C	10 mile	5707C	10 mile

Job

Job Times

Formation Name	Formation Depth (MD)	Top	Bottom	Called Out	Date	Time	Time Zone
Form Type	1231. ft	BHST	1231. ft	On Location	18 - Jan - 2014	21:09	MST
Job depth MD	Water Depth	Wk Ht Above Floor	3. ft	Job Started	18 - Jan - 2014	22:23	MST
Perforation Depth (MD)	From	To	Deparated Loc				

Well Data

Description	New / Used	Max pressure psig	Size in	ID in	Weight lbm/ft	Thread	Grade	Top MD ft	Bottom MD ft	Top TVD ft	Bottom TVD ft
13 1/2" Open Hole Section				13.5				.	1231.		
9 5/8" Surface Casing	Unknown		9.625	8.921	36.		J-55	.	1231.		

Fluid Data									
Stage/Plug #: 1									
Fluid #	Stage Type	Fluid Name	Qty	Qty uom	Mixing Density lbm/gal	Yield ft ³ /sk	Mix Fluid Gal/sk	Rate bbl/min	Total Mix Fluid Gal/sk
1	Fresh Water Spacer		10.0	bbl	8.33			4.0	
2	Mud Flush		12.0	bbl	8.4			4.0	
1	Fresh Water Spacer		10.0	bbl	8.33			4.0	
3	SwiftCem B2	SWIFTCem (TM) SYSTEM (452990)	447	sacks	14.2	1.54	7.66	5.0	7.66
7.66 Gal		FRESH WATER							
Calculated Values		Pressures		Volumes					
Displacement		Shut In: Instant		Lost Returns		Cement Slurry		Pad	
Top Of Cement		5 Min		Cement Returns		10.0		Actual Displacement 90.0	
Frac Gradient		15 Min		Spacers		32.0		Load and Breakdown	
Rates									
Circulating		Mixing		Displacement		Avg. Job			
Cement Left In Pipe		Amount 45 ft		Reason		Shoe Joint			
Frac Ring # 1 @		ID	Frac ring # 2 @	ID	Frac Ring # 3 @	ID	Frac Ring # 4 @	ID	
The Information Stated Herein Is Correct				Customer Representative Signature					

