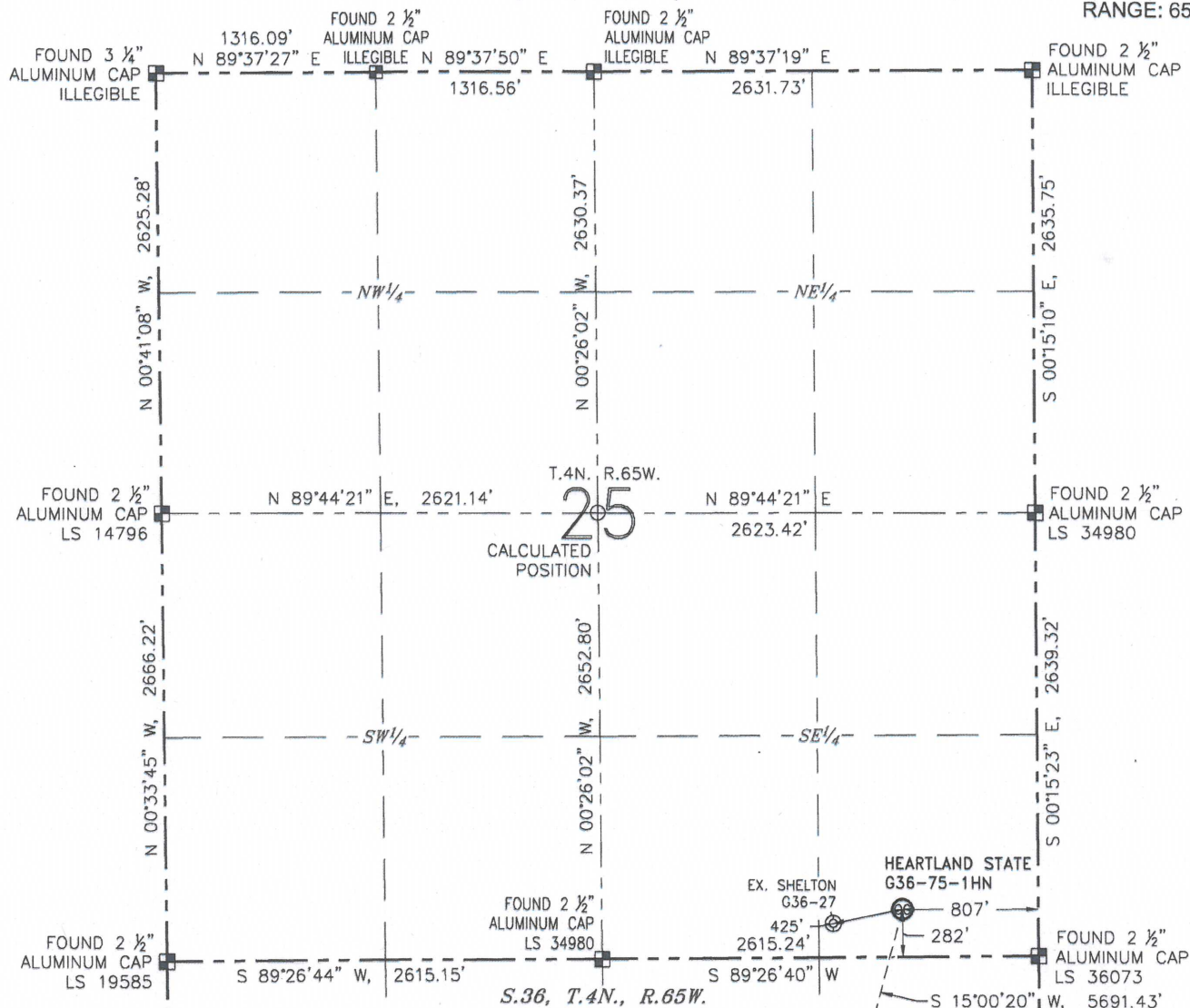


WELL LOCATION CERTIFICATE

HEARTLAND STATE G36-75-1HN

(SHEET 1 OF 2)

SECTION: 25
TOWNSHIP: 4N
RANGE: 65W

NOTES:

1. BEARINGS ARE GRID BEARINGS OF THE COLORADO STATE PLANE COORDINATE SYSTEM, NORTH ZONE, NAD 83. THE LINEAL DIMENSIONS SHOWN HEREON ARE BASED UPON THE "U.S. SURVEY FOOT".
2. GROUND ELEVATIONS ARE BASED UPON NGS OPUS SOLUTION NAVD 88 DATUM COMPUTED USING GEOD09.
3. IMPROVEMENTS: SEE LOCATION DRAWING FOR ALL VISIBLE IMPROVEMENTS WITHIN 500' OF THE DISTURBED AREA.
4. SURFACE USE: RANGELAND.
5. INSTRUMENT OPERATOR: ANTONIO SMITH.
6. THE NEAREST EXISTING WELL: SHELTON G36-27, 425' SW.

NEAREST CULTURAL ITEMS:

BUILDING:	1803' SE
BUILDING UNIT:	1719' E
HIGH OCCUPANCY BUILDING UNIT:	5280'+
DESIGNATED OUTSIDE ACTIVITY AREA:	5280'+
PUBLIC ROAD (CR 49):	786' E
ABOVEGROUND UTILITY:	252' S
RAILROAD:	5280'+
PROPERTY LINE:	282' S



0 1000'

SCALE: 1" = 1000'

LEGEND

- ⊗ PROPOSED WELL ⊕ BOTTOM HOLE ○ CALCULATED POSITION
- ⊙ EXISTING WELL ⊠ FOUND MONUMENT

SURFACE HOLE LOCATION

LATITUDE: N 40.27673°

LONGITUDE: W 104.60523°

PDOP: 1.5

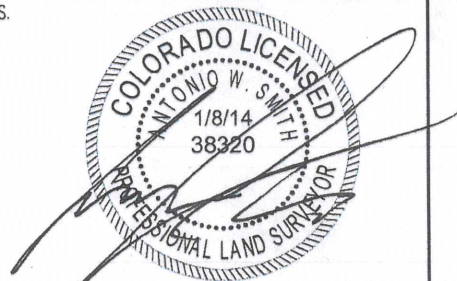
ELEVATION: 4834'

1/4-1/4: SE 1/4 SE 1/4

BOTTOM HOLE LOCATION

LATITUDE: N 40.26168°

LONGITUDE: W 104.61071°

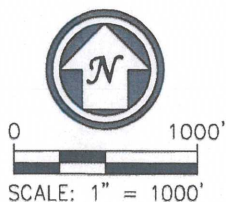
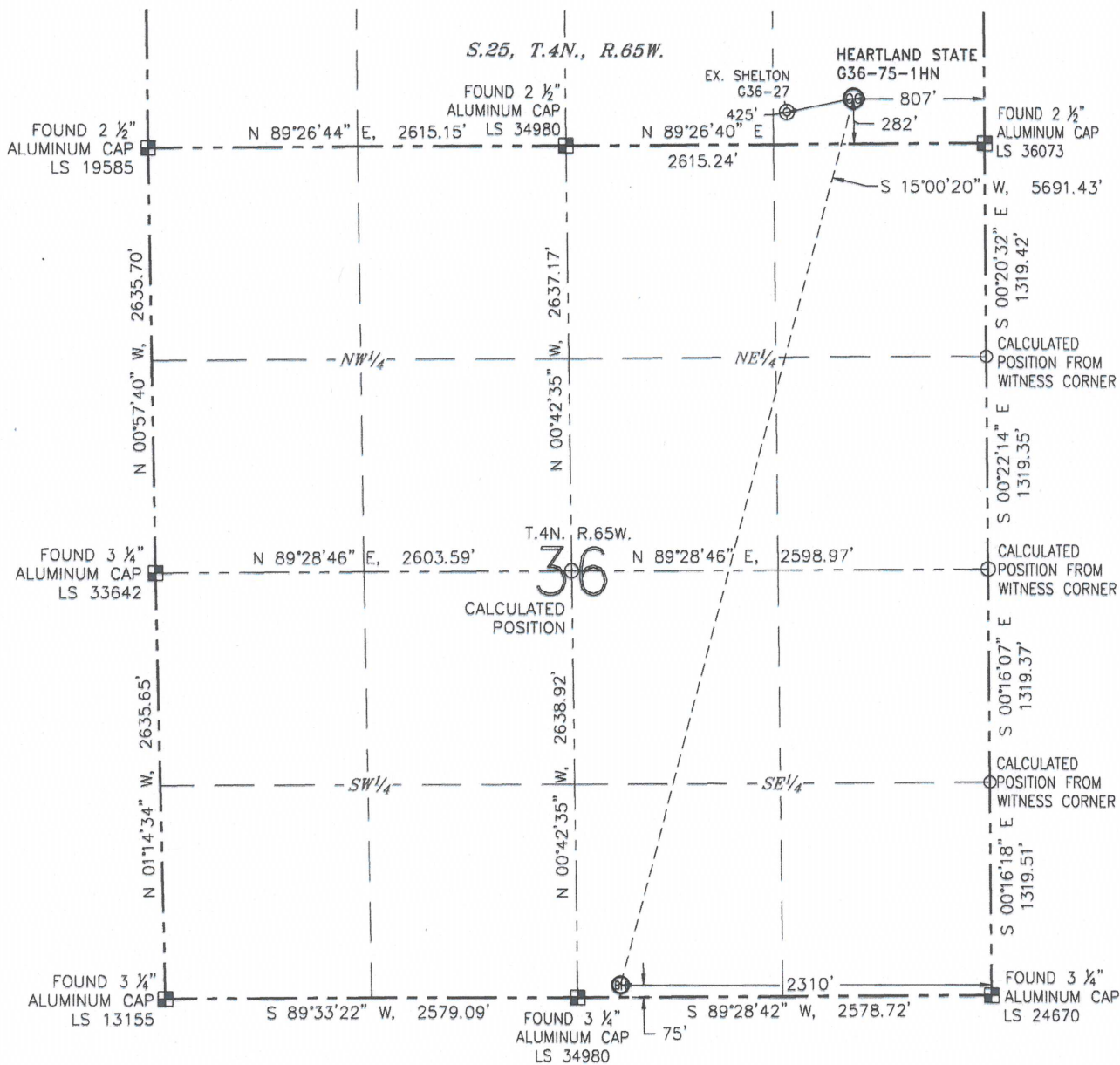


ANTONIO W. SMITH, PLS 38320
FOR AND ON BEHALF OF R&R ENGINEERS-SURVEYORS, INC. DATE: 01/08/2014
JOB NO.: NE13301

WELL LOCATION CERTIFICATE

HEARTLAND STATE G36-75-1HN
(SHEET 2 OF 2)

SECTION: 25
TOWNSHIP: 4N
RANGE: 65W



LEGEND

- ⊗ PROPOSED WELL
- ⊙ EXISTING WELL
- ⊕ BOTTOM HOLE
- ⊠ FOUND MONUMENT
- CALCULATED POSITION



ANTONIO W. SMITH, PLS 38320
FOR AND ON BEHALF OF R&R ENGINEERS-SURVEYORS, INC. DATE: 01/08/2014
JOB NO.: NE13301

SITE SKETCH

HEARTLAND STATE G36-75-1HN

SECTION: 25
TOWNSHIP: 4N
RANGE: 65W

