

1625 Broadway  
Suite 2000  
Denver, CO 80202  
  
Tel: 303.228.4000  
Fax: 303.228.4280  
www.nobleenergyinc.com



04/15/2014

Colorado Oil and Gas Conservation Commission  
The Chancery Building  
1120 Lincoln Street, Suite 801  
Denver, CO 80203  
Attn: Mr. Matt Lepore, Director

RE: Heartland State G36-75-1HN  
SESE, Sec 25, Township 4 North, Range 65 West, 6th P.M.  
Weld County, Colorado

Dear Director:

Noble Energy, Inc. ("NEI") is planning to drill the captioned boundary well in accordance with the provisions of COGCC Rule 318A.e.

NEI's proposed wellbore spacing unit consists of the NW/4NE/4, NE/4NW/4 of Section 1 T3N, 65W, W/2E/2, E/2W/2 of Section 36 T4N, R65W, creating a 400-acre wellbore spacing unit for the Niobrara formation. NEI is the only owner within the proposed wellbore spacing unit, therefore NEI hereby attests that no notice letters are required under COGCC Rule 318A(I).e.(6).

Enclosed are copies of the following documents to assist you in your review and approval of NEI's proposed APD for the captioned well:

- Map & plat illustrating proposed wellbore spacing unit.

Thank you for your attention to the enclosed. NEI respectfully requests that the COGCC review the enclosed information and approve the Application for Permit to Drill the captioned well.

Sincerely,

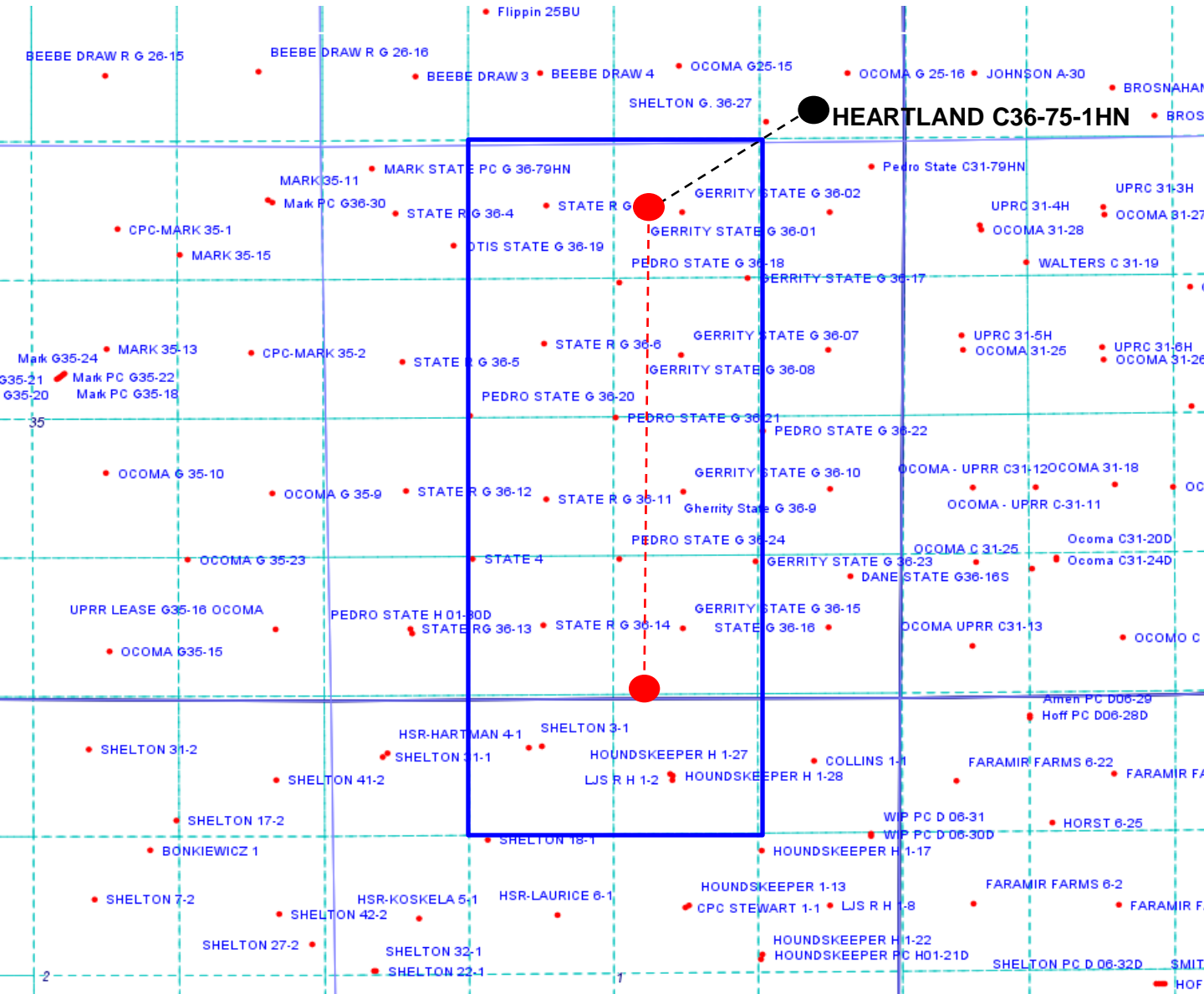
*Andrea Rawson*

Andrea Rawson  
Regulatory Analyst  
Noble Energy Inc.

# Heartland C36-75-1HN

## Proposed Spacing Unit – Noble Energy, Inc

NW/4NE/4, NE/4NW/4 of Section 1, Township 3 North, Range 65 West  
W/2E/2, E/2W/2 of Section 36, Township 4 North, Range 65 West



Legend



Proposed 400.40± acre spacing unit

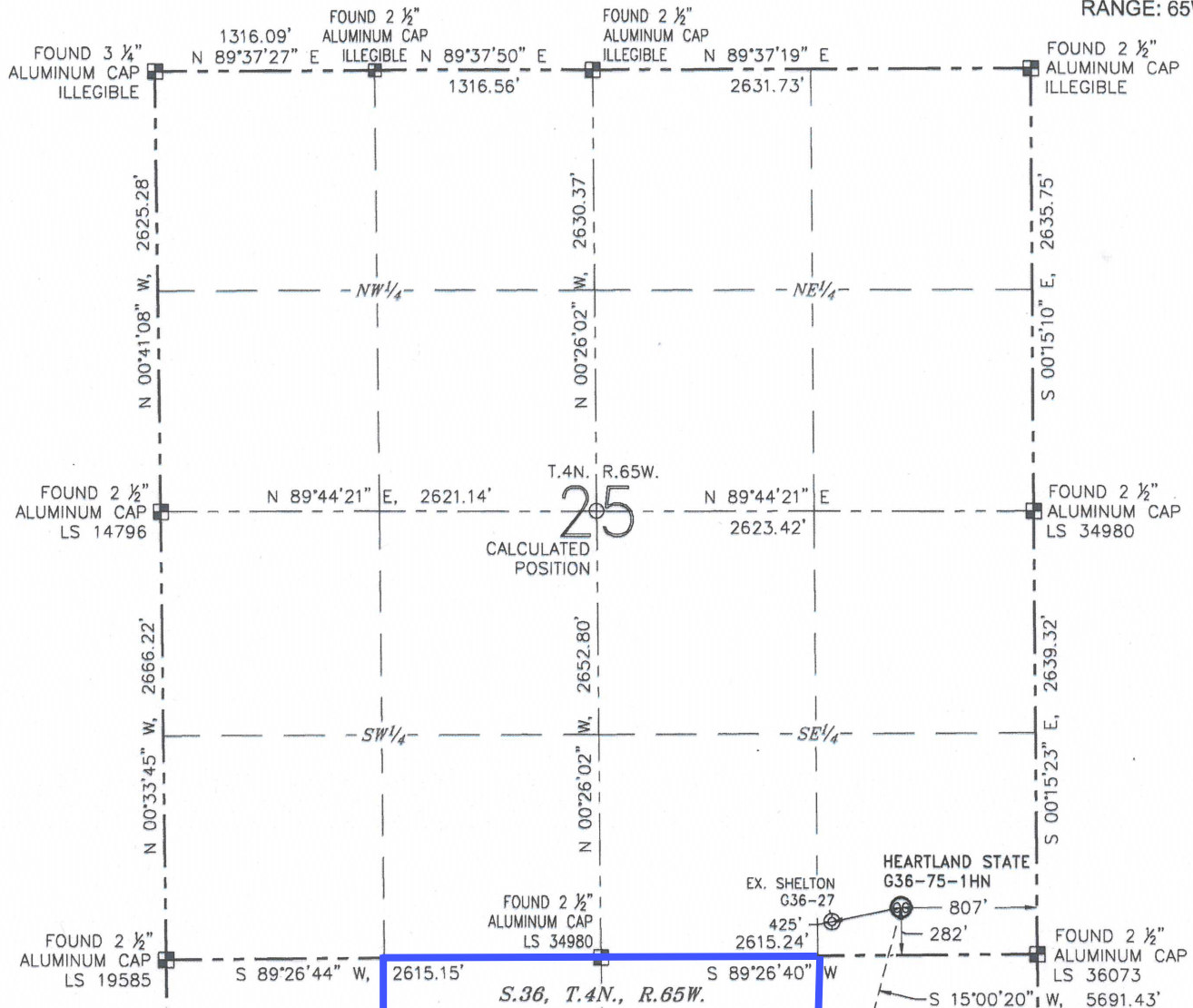


Bottom Hole Location

## WELL LOCATION CERTIFICATE

HEARTLAND STATE G36-75-1HN

(SHEET 1 OF 2)

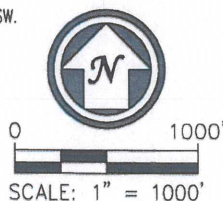
SECTION: 25  
TOWNSHIP: 4N  
RANGE: 65W

## NOTES:

1. BEARINGS ARE GRID BEARINGS OF THE COLORADO STATE PLANE COORDINATE SYSTEM, NORTH ZONE, NAD 83. THE LINEAL DIMENSIONS SHOWN HEREON ARE BASED UPON THE "U.S. SURVEY FOOT".
2. GROUND ELEVATIONS ARE BASED UPON NGS OPUS SOLUTION NAVD 88 DATUM COMPUTED USING GEOD09.
3. IMPROVEMENTS: SEE LOCATION DRAWING FOR ALL VISIBLE IMPROVEMENTS WITHIN 500' OF THE DISTURBED AREA.
4. SURFACE USE: RANGELAND.
5. INSTRUMENT OPERATOR: ANTONIO SMITH.
6. THE NEAREST EXISTING WELL: SHELTON G36-27, 425' SW.

## NEAREST CULTURAL ITEMS:

BUILDING: 1803' SE  
BUILDING UNIT: 1719' E  
HIGH OCCUPANCY BUILDING UNIT: 5280'+  
DESIGNATED OUTSIDE ACTIVITY AREA: 5280'+  
PUBLIC ROAD (CR 49): 786' E  
ABOVEGROUND UTILITY: 252' S  
RAILROAD: 5280'+  
PROPERTY LINE: 282' S



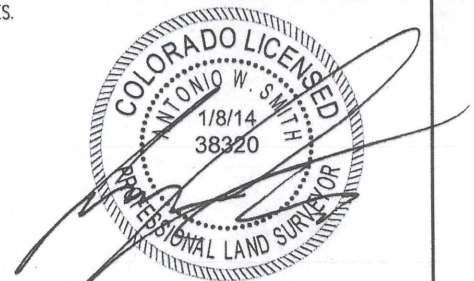
- LEGEND
- ⊗ PROPOSED WELL ⊕ BOTTOM HOLE ○ CALCULATED POSITION
- ⊙ EXISTING WELL ⊠ FOUND MONUMENT

## SURFACE HOLE LOCATION

LATITUDE: N 40.27673°  
LONGITUDE: W 104.60523°  
PDOP: 1.5  
ELEVATION: 4834'  
1/4-1/4: SE 1/4 SE 1/4

## BOTTOM HOLE LOCATION

LATITUDE: N 40.26168°  
LONGITUDE: W 104.61071°

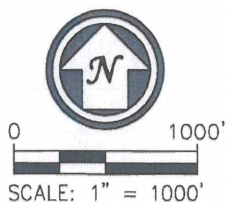
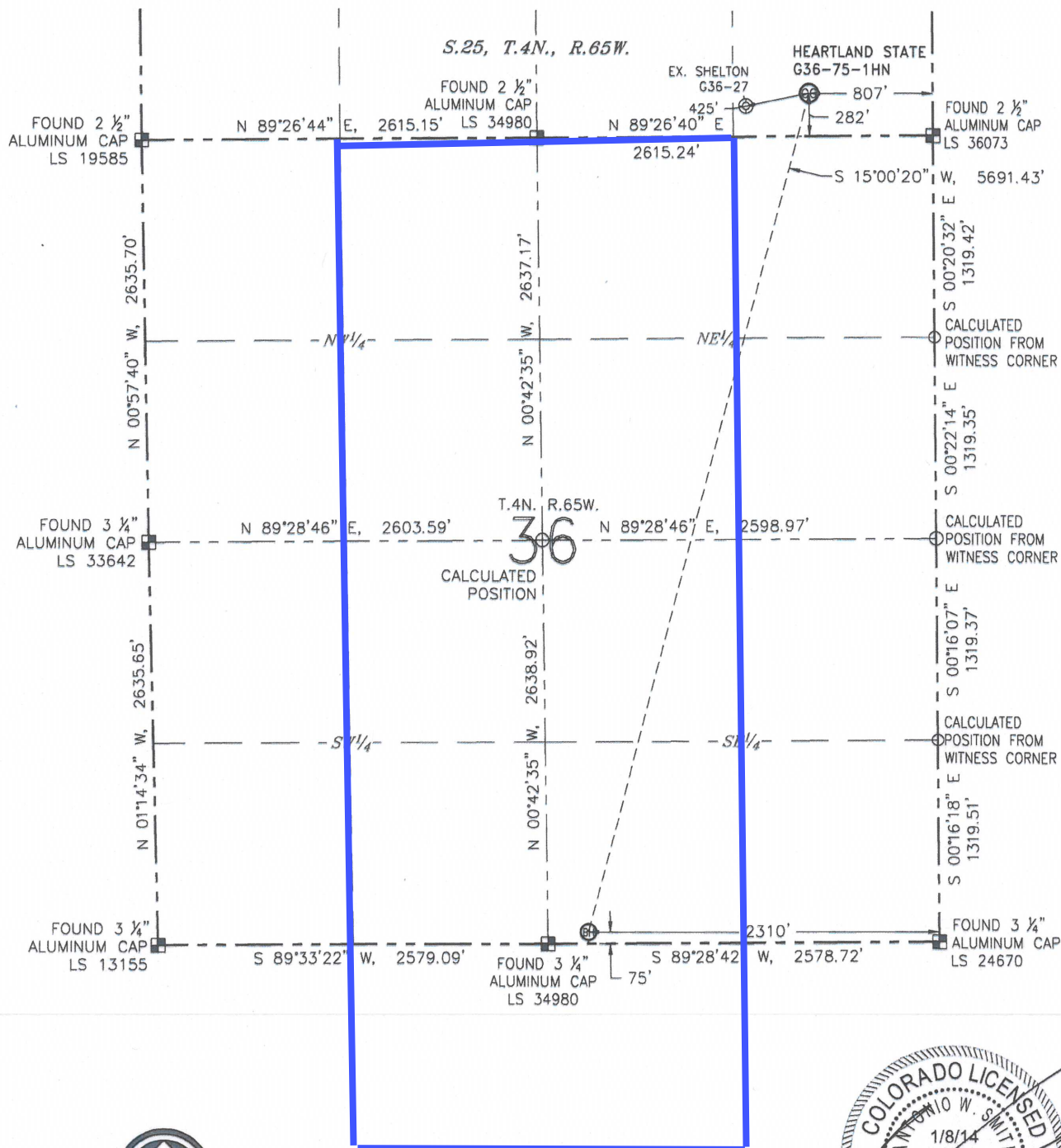


ANTONIO W. SMITH, PLS 38320  
FOR AND ON BEHALF OF R&R ENGINEERS-SURVEYORS, INC. DATE: 01/08/2014  
JOB NO.: NE13301

# WELL LOCATION CERTIFICATE

HEARTLAND STATE G36-75-1HN  
(SHEET 2 OF 2)

SECTION: 25  
TOWNSHIP: 4N  
RANGE: 65W



- LEGEND
- ⊗ PROPOSED WELL
  - ⊙ EXISTING WELL
  - ⊕ BOTTOM HOLE
  - ⊠ FOUND MONUMENT
  - CALCULATED POSITION



ANTONIO W. SMITH, PLS 38320  
FOR AND ON BEHALF OF R&R ENGINEERS-SURVEYORS, INC. DATE: 01/08/2014  
JOB NO.: NE13301