

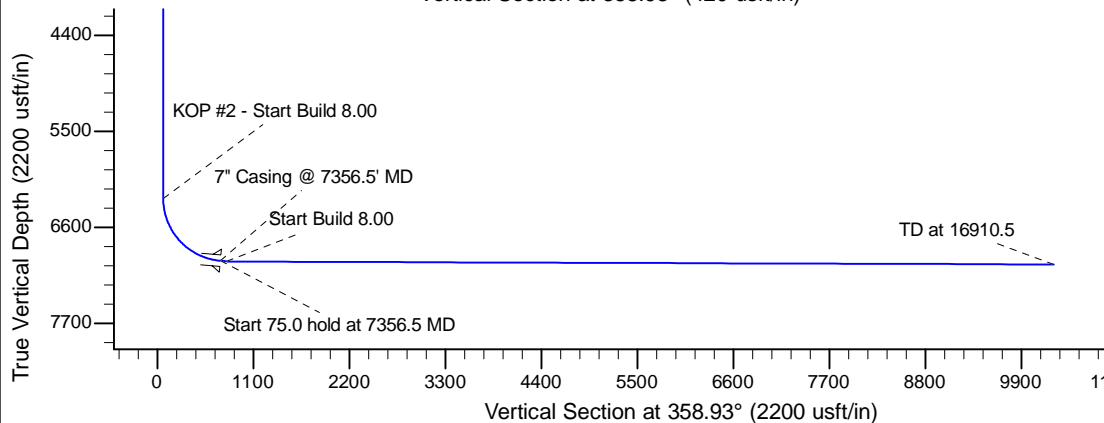
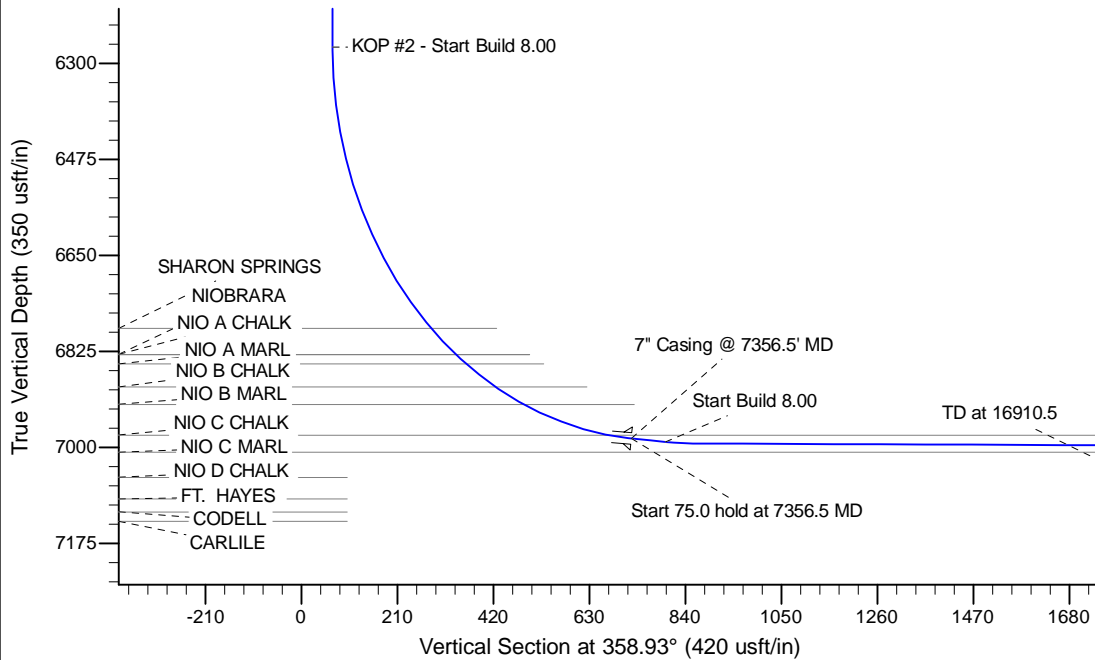
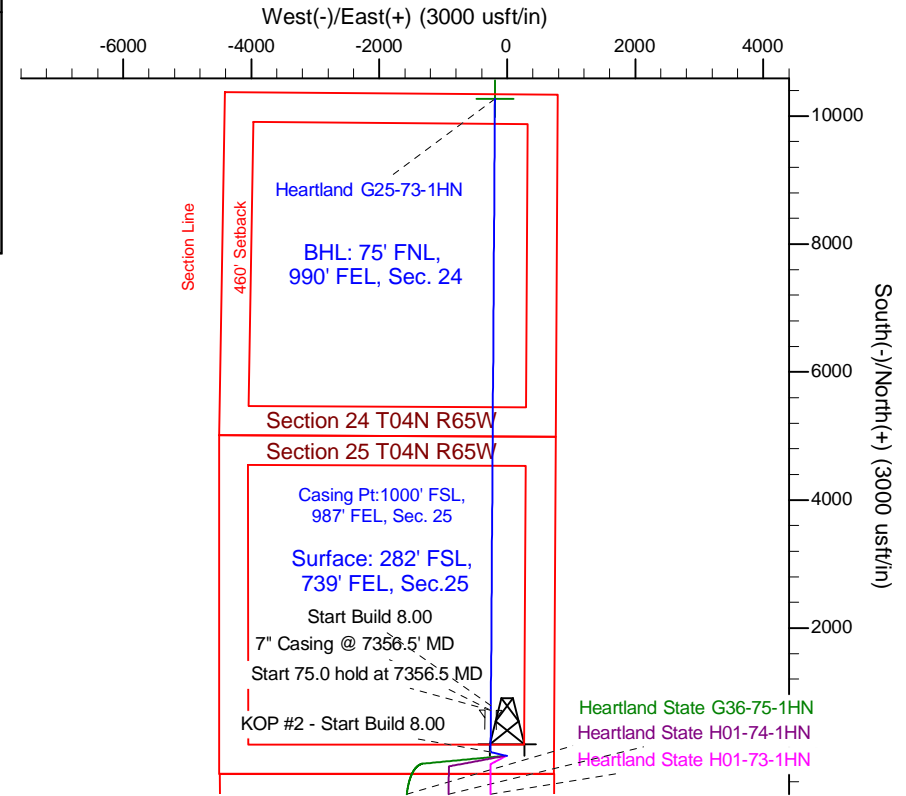
Project: Wattenberg Field
 Site: G (Sec.25-T04N-R65W) Weld County, CO
 Well: Heartland G25-73-1HN
 Wellbore: Wellbore #1
 Design: APD - Rev 0

Northern Region Drilling - Working

Geodetic System: US State Plane 1983
 Datum: North American Datum 1983
 Ellipsoid: GRS 1980
 Zone: Colorado Northern Zone
 System Datum: Mean Sea Level

SECTION DETAILS

Sec	MD	Inc	Azi	TVD	+N/-S	+E/-W	Dleg	TFace	VSect	Target
1	0.0	0.00	0.00	0.0	0.0	0.0	0.00	0.00	0.0	
2	2200.0	0.00	0.00	2200.0	0.0	0.0	0.00	0.00	0.0	
3	2801.9	12.04	283.52	2797.5	14.7	-61.2	2.00	283.52	15.9	
4	3481.9	12.04	283.52	3462.5	47.9	-199.1	0.00	0.00	51.6	
5	4083.8	0.00	0.00	4060.0	62.6	-260.4	2.00	180.00	67.5	
6	6294.0	0.00	0.00	6270.2	62.6	-260.4	0.00	0.00	67.5	
7	7356.5	85.00	0.38	6983.7	716.4	-256.0	8.00	0.38	721.1	
8	7431.5	85.00	0.38	6990.2	791.1	-255.5	0.00	0.00	795.8	
9	7491.5	89.80	0.38	6992.9	851.0	-255.1	8.00	0.00	855.7	
10	16910.5	89.80	0.38	7025.8	10269.7	-192.4	0.00	0.00	10271.6	Heartland G25-73-1HN BHL 75'FNL, 990'FEL



T M

Azimuths to True North
 Magnetic North: 8.36°

Magnetic Field
 Strength: 52832.1snT
 Dip Angle: 66.90°
 Date: 2/6/2014
 Model: IGRF200510

WELL DETAILS: Heartland G25-73-1HN					
		Ground Level: 4835.0			
0.0	0.0	Northing	Easting	Latitude	Longitude
		1344914.32	3249718.56	40.276730	-104.604990
Plan: APD - Rev 0 (Heartland G25-73-1HN/Wellbore #1)					
Created By: Shailey Jewell			Date: 12:32, February 10 2014		
OK to submit with 2A as per Noble Drilling					
2/11/2014 9:13					