

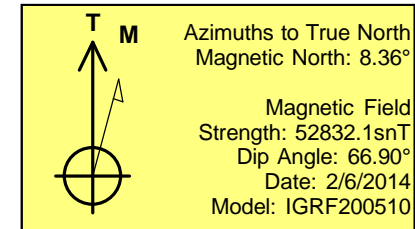
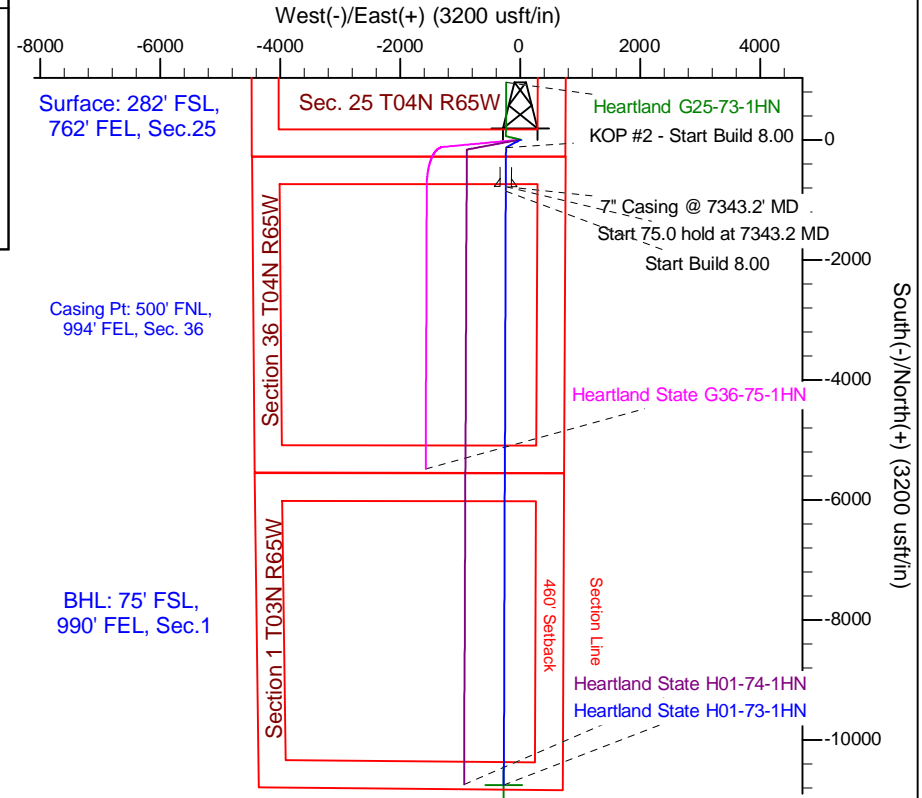
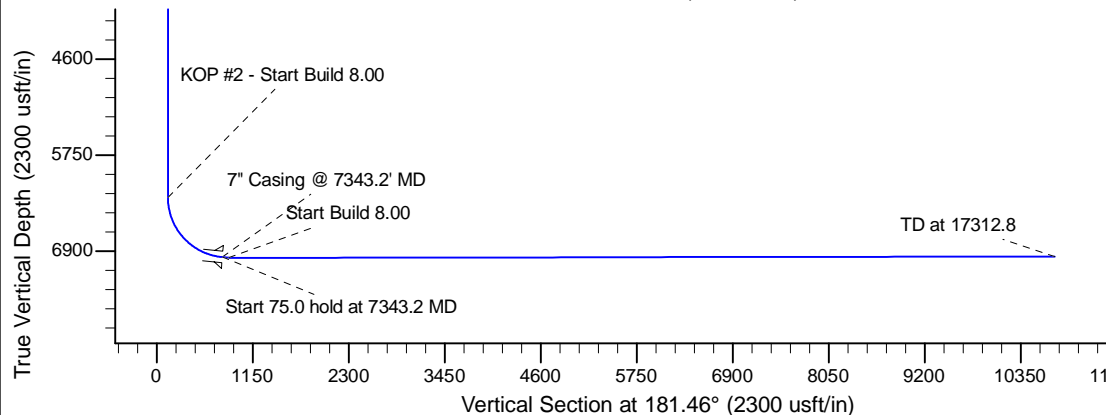
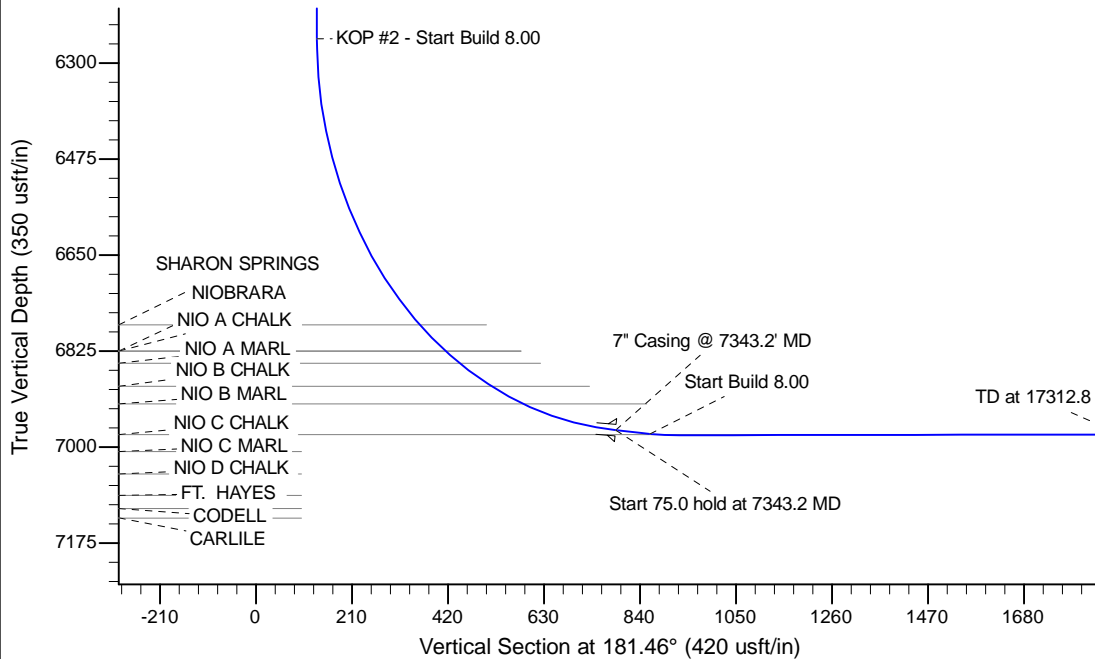
Project: Wattenberg Field  
Site: G (Sec.25-T04N-R65W) Weld County, CO  
Well: Heartland State H01-73-1HN  
Wellbore: Wellbore #1  
Design: APD - Rev 0

# Northern Region Drilling - Working

Geodetic System: US State Plane 1983  
Datum: North American Datum 1983  
Ellipsoid: GRS 1980  
Zone: Colorado Northern Zone  
System Datum: Mean Sea Level

## SECTION DETAILS

Sec	MD	Inc	Azi	TVD	+N/-S	+E/-W	Dleg	TFace	VSec	Target
1	0.0	0.00	0.00	0.0	0.0	0.0	0.00	0.00	0.0	
2	1800.0	0.00	0.00	1800.0	0.0	0.0	0.00	0.00	0.0	
3	2449.8	13.00	241.73	2444.3	-34.8	-64.6	2.00	241.73	36.4	
4	2995.3	13.00	241.73	2975.7	-92.9	-172.7	0.00	0.00	97.2	
5	3645.1	0.00	0.00	3620.0	-127.6	-237.3	2.00	180.00	133.6	
6	6280.7	0.00	0.00	6255.6	-127.6	-237.3	0.00	0.00	133.6	
7	7343.2	85.00	180.20	6969.1	-781.4	-239.5	8.00	180.20	787.2	
8	7418.2	85.00	180.20	6975.6	-856.1	-239.8	0.00	0.00	861.9	
9	7482.0	90.10	180.20	6978.4	-919.8	-240.0	8.00	0.00	925.6	
10	17312.8	90.10	180.20	6961.2	-10750.6	-273.6	0.00	0.00	10754.0	Heartland State H01-74-1HN BHL 75'FSL, 990'FEL



## WELL DETAILS: Heartland State H01-73-1HN

Ground Level: 4834.0		Latitude		Longitude	
Northing	Easting				
0.0	0.0	1344914.09	3249696.24	40.276730	-104.605070

Plan: APD - Rev 0 (Heartland State H01-73-1HN/Wellbore #1)

Created By: Shailey Jewell

Date: 13:17, February 10 2014

OK to submit with 2A as per Noble Drilling  
2/11/2014 9:02