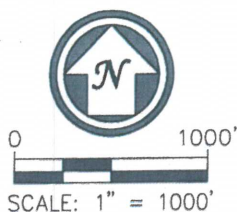
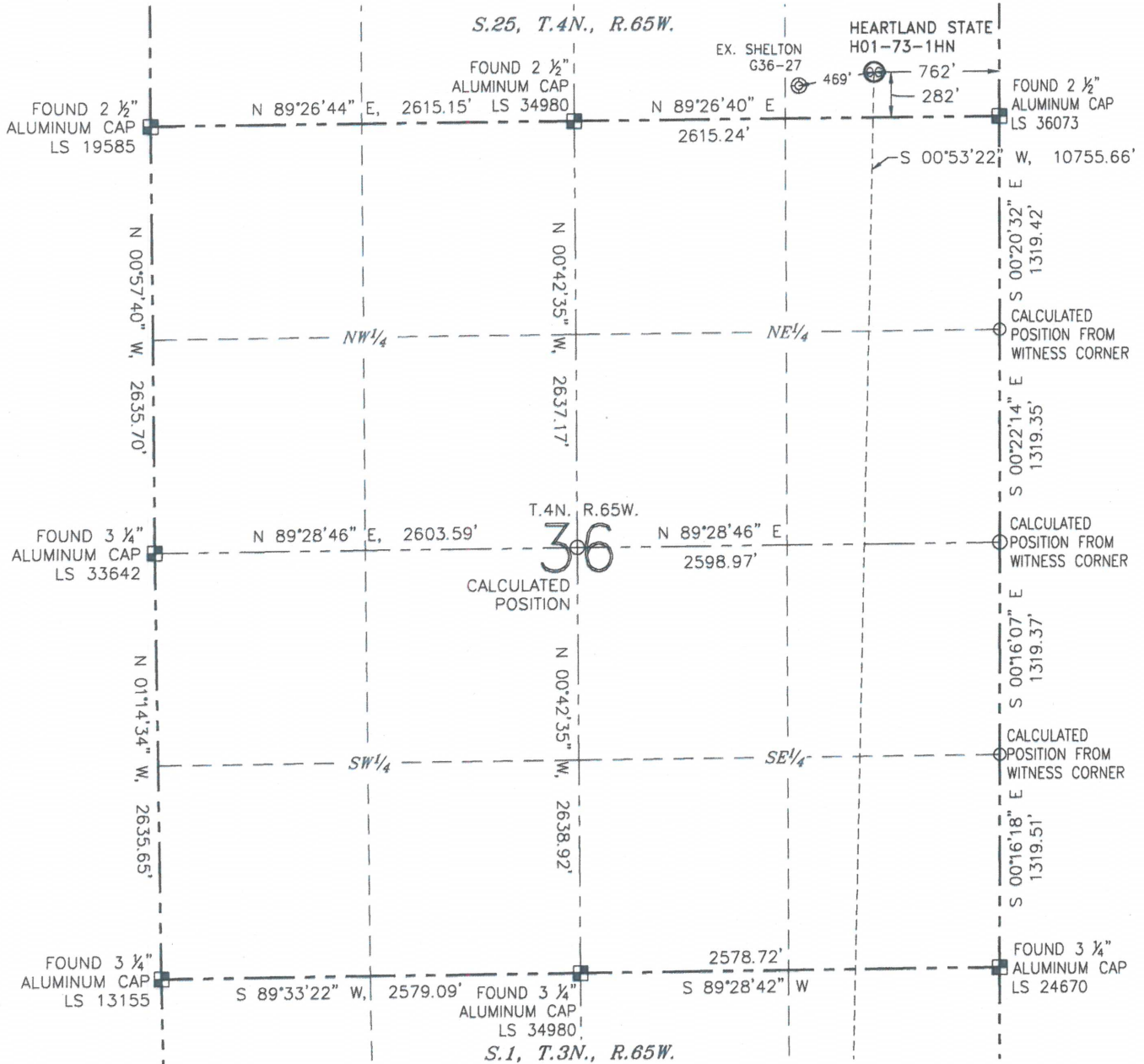


WELL LOCATION CERTIFICATE

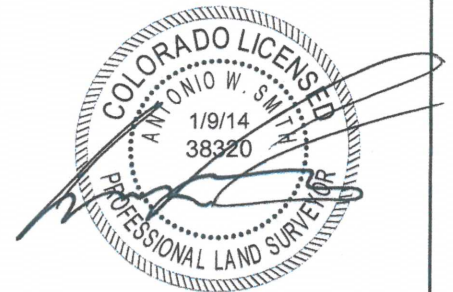
HEARTLAND STATE H01-73-1HN
(SHEET 2 OF 3)

SECTION: 25
TOWNSHIP: 4N
RANGE: 65W



LEGEND

- ⊗ PROPOSED WELL
- ⊙ EXISTING WELL
- FOUND MONUMENT
- CALCULATED POSITION

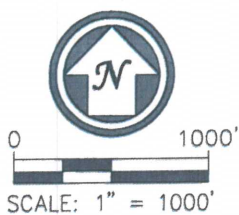
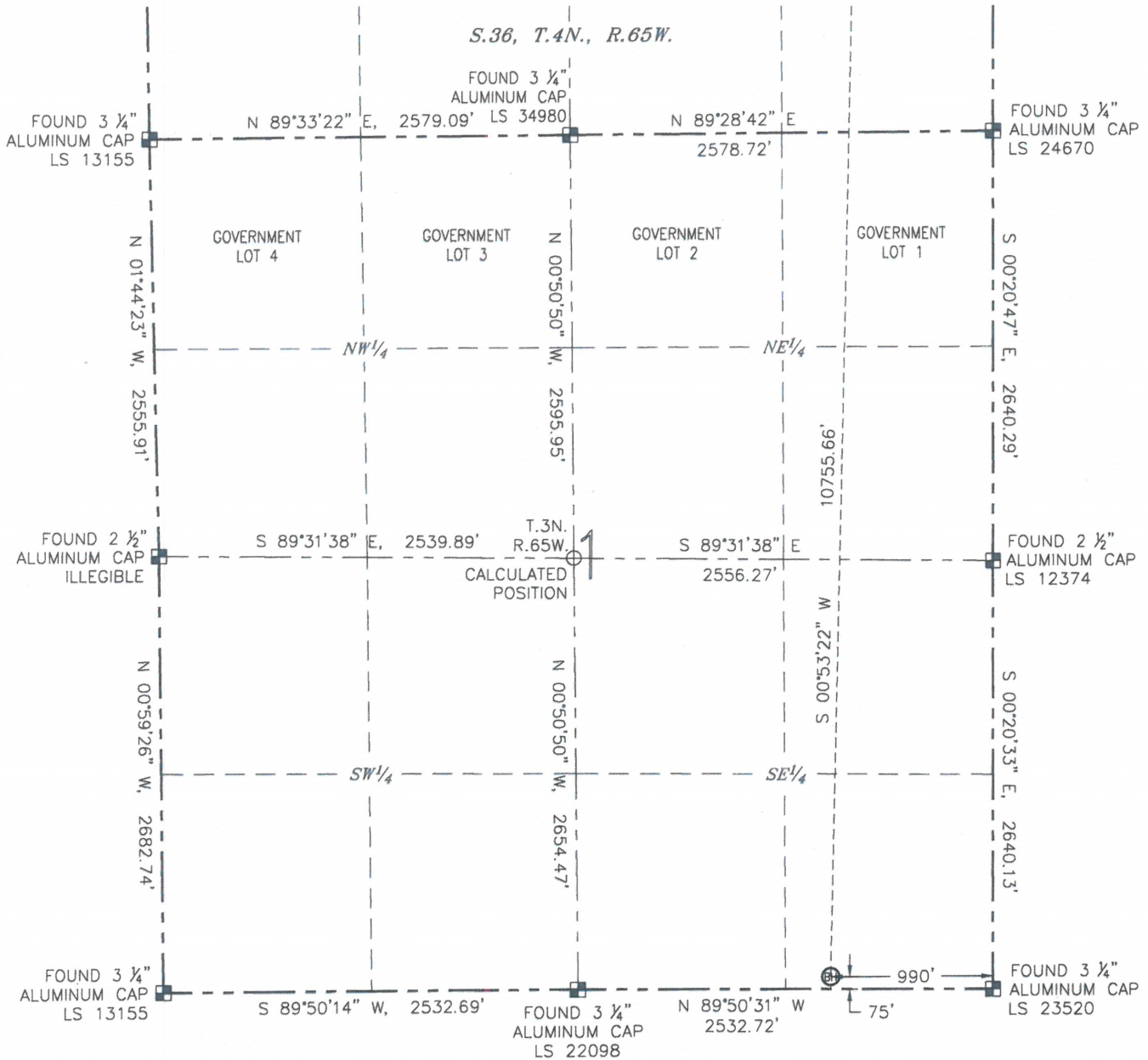


ANTONIO W. SMITH, PLS 38320
FOR AND ON BEHALF OF R&R ENGINEERS-SURVEYORS, INC. DATE: 01/09/2014
JOB NO.: NE13301

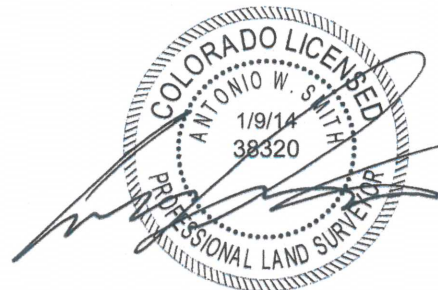
WELL LOCATION CERTIFICATE

HEARTLAND STATE H01-73-1HN
(SHEET 3 OF 3)

SECTION: 25
TOWNSHIP: 4N
RANGE: 65W



- LEGEND
- BOTTOM HOLE
 - FOUND MONUMENT
 - CALCULATED POSITION



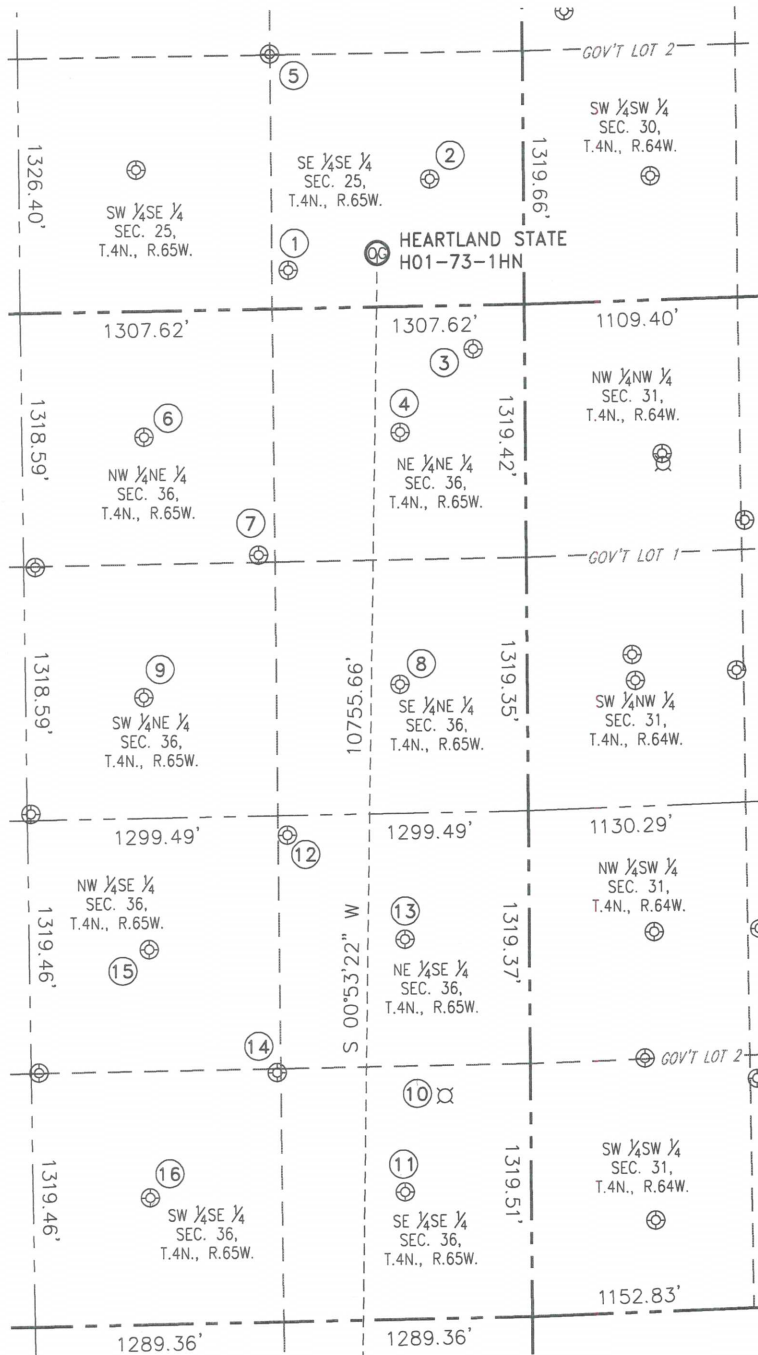
ANTONIO W. SMITH, PLS 38320
FOR AND ON BEHALF OF R&R ENGINEERS-SURVEYORS, INC. DATE: 01/09/2014
JOB NO.: NE13301

SITE SKETCH

HEARTLAND STATE H01-73-1HN

(SHEET 1 OF 2)

SECTION: 25
TOWNSHIP: 4N
RANGE: 65W



① SHELTON G36-27
SE $\frac{1}{4}$ SE $\frac{1}{4}$
201' FSL 1223' FEL
LAT: N 40.27651°
LONG: W 104.60672°
PDOP: 1.3
ELEV: 4830'

② OCOMA G25-16
SE $\frac{1}{4}$ SE $\frac{1}{4}$
662' FSL 486' FEL
LAT: N 40.27777°
LONG: W 104.60407°
PDOP: 1.4
ELEV: 4843'

③ PEDRO STATE C31-79HN
NE $\frac{1}{4}$ NE $\frac{1}{4}$
229' FNL 268' FEL
LAT: N 40.27533°
LONG: W 104.60331°
PDOP: 1.8
ELEV: 4846'

④ GERRITY STATE G36-1
NE $\frac{1}{4}$ NE $\frac{1}{4}$
657' FNL 650' FEL
LAT: N 40.27416°
LONG: W 104.60468°
PDOP: 1.9
ELEV: 4844'

⑤ OCOMA G25-23
NW $\frac{1}{4}$ SE $\frac{1}{4}$
1328' FSL 1313' FEL
LAT: N 40.27960°
LONG: W 104.60702°
PDOP: 1.5
ELEV: 4822'

⑥ GERRITY STATE G36-2
NW $\frac{1}{4}$ NE $\frac{1}{4}$
658' FNL 1979' FEL
LAT: N 40.27415°
LONG: W 104.60944°
PDOP: 2.9
ELEV: 4825'

⑦ GERRITY STATE G36-17
NW $\frac{1}{4}$ NE $\frac{1}{4}$
1282' FNL 1390' FEL
LAT: N 40.27244°
LONG: W 104.60734°
PDOP: 1.7
ELEV: 4833'

⑧ GERRITY STATE G36-8
SE $\frac{1}{4}$ NE $\frac{1}{4}$
1970' FNL 663' FEL
LAT: N 40.27055°
LONG: W 104.60475°
PDOP: 1.6
ELEV: 4849'

⑨ GERRITY STATE G36-7
SW $\frac{1}{4}$ NE $\frac{1}{4}$
2012' FNL 1991' FEL
LAT: N 40.27044°
LONG: W 104.60951°
PDOP: 2.4
ELEV: 4829'

⑩ DANE STATE G36-16S
SE $\frac{1}{4}$ SE $\frac{1}{4}$
PER COGCC:
1161' FSL
445' FEL
PLUGGED &
ABANDONED

⑪ STATE G36-16
SE $\frac{1}{4}$ SE $\frac{1}{4}$
664' FSL 657' FEL
LAT: N 40.26329°
LONG: W 104.60477°
PDOP: 1.3
ELEV: 4867'

⑫ PEDRO STATE G36-22
NE $\frac{1}{4}$ SE $\frac{1}{4}$
2536' FSL 1252' FEL
LAT: N 40.26844°
LONG: W 104.60687°
PDOP: 2.2
ELEV: 4835'

⑬ GERRITY STATE G36-9
NE $\frac{1}{4}$ SE $\frac{1}{4}$
1983' FSL 647' FEL
LAT: N 40.26691°
LONG: W 104.60471°
PDOP: 1.5
ELEV: 4846'

⑭ GERRITY STATE G36-23
SW $\frac{1}{4}$ SE $\frac{1}{4}$
1299' FSL 1314' FEL
LAT: N 40.26504°
LONG: W 104.60712°
PDOP: 1.3
ELEV: 4856'

⑮ GERRITY STATE G36-10
NW $\frac{1}{4}$ SE $\frac{1}{4}$
1956' FSL 1973' FEL
LAT: N 40.26684°
LONG: W 104.60946°
PDOP: 1.5
ELEV: 4844'

⑯ GERRITY STATE G36-15
SW $\frac{1}{4}$ SE $\frac{1}{4}$
661' FSL 1977' FEL
LAT: N 40.26329°
LONG: W 104.60950°
PDOP: 1.5
ELEV: 4843'

NOTES:

- THIS SKETCH DOES NOT REPRESENT A BOUNDARY SURVEY.
- HORIZONTAL DATUM IS NAD 83.
- VERTICAL DATUM IS NAVD 88.



0 1000'
SCALE: 1" = 1000'

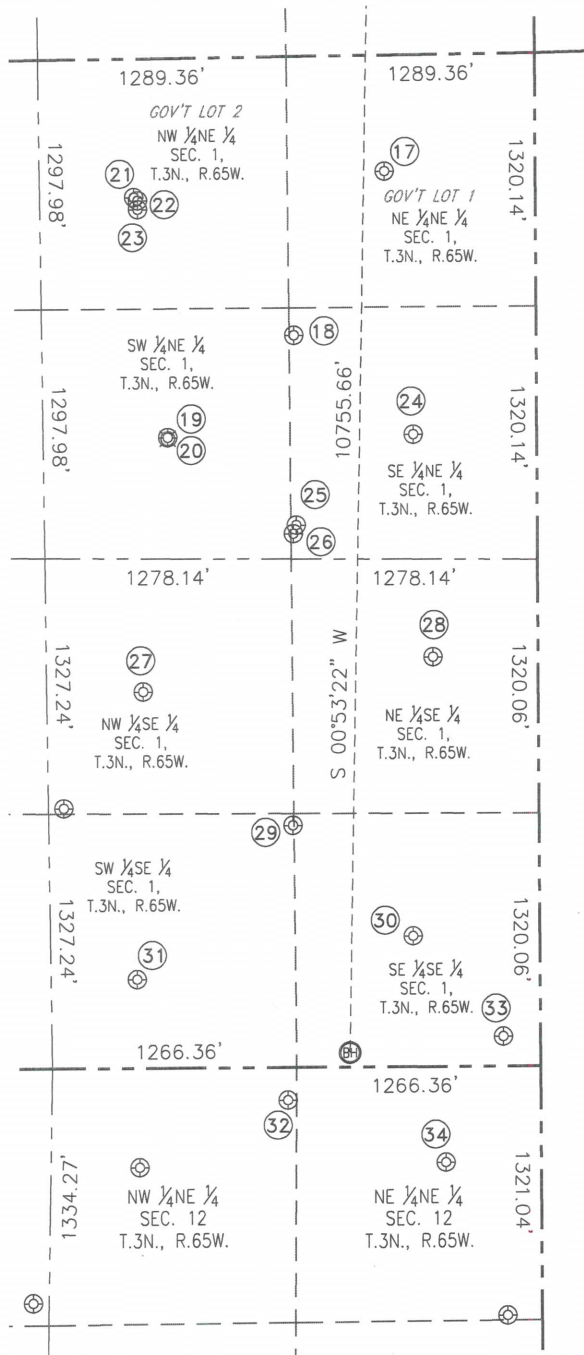
LEGEND

- ⊕ PROPOSED WELL ⊕ BOTTOM HOLE
⊙ EXISTING WELL ⊘ ABANDONED WELL

DATE: 01/09/2014
JOB NO.: NE13301

SITE SKETCH **HEARTLAND STATE H01-73-1HN** **(SHEET 2 OF 2)**

SECTION: 25
 TOWNSHIP: 4N
 RANGE: 65W



17
 COLLINS 1-1
 NE 1/4 NE 1/4
 605' FNL 784' FEL
 LAT: N 40.25981"
 LONG: W 104.60525"
 PDOP: 3.0
 ELEV: 4872'

19
 HOUNDSKEEPER 1-13
 SW 1/4 NE 1/4
 1975' FNL 1915' FEL
 LAT: N 40.25605"
 LONG: W 104.60932"
 PDOP: 3.0
 ELEV: 4874'

21
 HOUNDSKEEPER H1-21
 NW 1/4 NE 1/4
 720' FNL 2085' FEL
 LAT: N 40.25950"
 LONG: W 104.60991"
 PDOP: 1.7
 ELEV: 4855'

23
 LJS RH1-2
 NW 1/4 NE 1/4
 783' FNL 2065' FEL
 LAT: N 40.25933"
 LONG: W 104.60984"
 PDOP: 1.9
 ELEV: 4856'

25
 HOUNDSKEEPER PC H01-21D
 SE 1/4 NE 1/4
 2443' FNL 1251' FEL
 LAT: N 40.25477"
 LONG: W 104.60695"
 PDOP: 4.0
 ELEV: 4870'

27
 UPRC 1-10J
 NW 1/4 SE 1/4
 1961' FSL 2049' FEL
 LAT: N 40.25243"
 LONG: W 104.60982"
 PDOP: 1.8
 ELEV: 4870'

29
 SHELTON H1-23
 SW 1/4 SE 1/4
 1262' FSL 1278' FEL
 LAT: N 40.25048"
 LONG: W 104.60707"
 PDOP: 1.8
 ELEV: 4875'

31
 UPRC 1-15J
 SW 1/4 NE 1/4
 461' FSL 2091' FEL
 LAT: N 40.24831"
 LONG: W 104.60999"
 PDOP: 2.3
 ELEV: 4872'

33
 SHELTON D7-30
 SE 1/4 SE 1/4
 154' FSL 194' FEL
 LAT: N 40.24741"
 LONG: W 104.60320"
 PDOP: 1.9
 ELEV: 4858'

18
 HOUNDSKEEPER H1-17
 SE 1/4 NE 1/4
 1455' FNL 1259' FEL
 LAT: N 40.25748"
 LONG: W 104.60696"
 PDOP: 2.4
 ELEV: 4866'

20
 CPC STEWART 1-1
 SW 1/4 NE 1/4
 PER COGCC:
 466' FNL
 1780' FWL
 PLUGGED &
 ABANDONED

22
 HOUNDSKEEPER H1-22
 NW 1/4 NE 1/4
 737' FNL 2065' FEL
 LAT: N 40.25945"
 LONG: W 104.60984"
 PDOP: 1.8
 ELEV: 4856'

24
 LJS 1-8
 SE 1/4 NE 1/4
 1978' FNL 642' FEL
 LAT: N 40.25604"
 LONG: W 104.60476"
 PDOP: 4.0
 ELEV: 4858'

26
 HOUNDSKEEPER H1-22
 SE 1/4 NE 1/4
 2488' FNL 1267' FEL
 LAT: N 40.25464"
 LONG: W 104.60701"
 PDOP: 4.1
 ELEV: 4870'

28
 UPRC 1-9J
 NE 1/4 SE 1/4
 2135' FSL 547' FEL
 LAT: N 40.25285"
 LONG: W 104.60444"
 PDOP: 2.5
 ELEV: 4855'

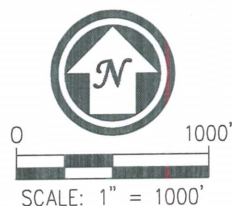
30
 UPRC 1-16J
 SE 1/4 SE 1/4
 681' FSL 658' FEL
 LAT: N 40.24887"
 LONG: W 104.60486"
 PDOP: 1.8
 ELEV: 4869'

32
 STROH 12-27
 NW 1/4 NE 1/4
 172' FNL 1314' FEL
 LAT: N 40.24655"
 LONG: W 104.60722"
 PDOP: 2.1
 ELEV: 4879'

34
 STROH H12-1
 NE 1/4 NE 1/4
 501' FNL 496' FEL
 LAT: N 40.24562"
 LONG: W 104.60429"
 PDOP: 1.4
 ELEV: 4856'

NOTES:

- THIS SKETCH DOES NOT REPRESENT A BOUNDARY SURVEY.
- HORIZONTAL DATUM IS NAD 83.
- VERTICAL DATUM IS NAVD 88.



LEGEND

- ⊕ PROPOSED WELL ⊕ BOTTOM HOLE
 ⊗ EXISTING WELL ⊗ ABANDONED WELL

DATE: 01/09/2014
 JOB NO.: NE13301