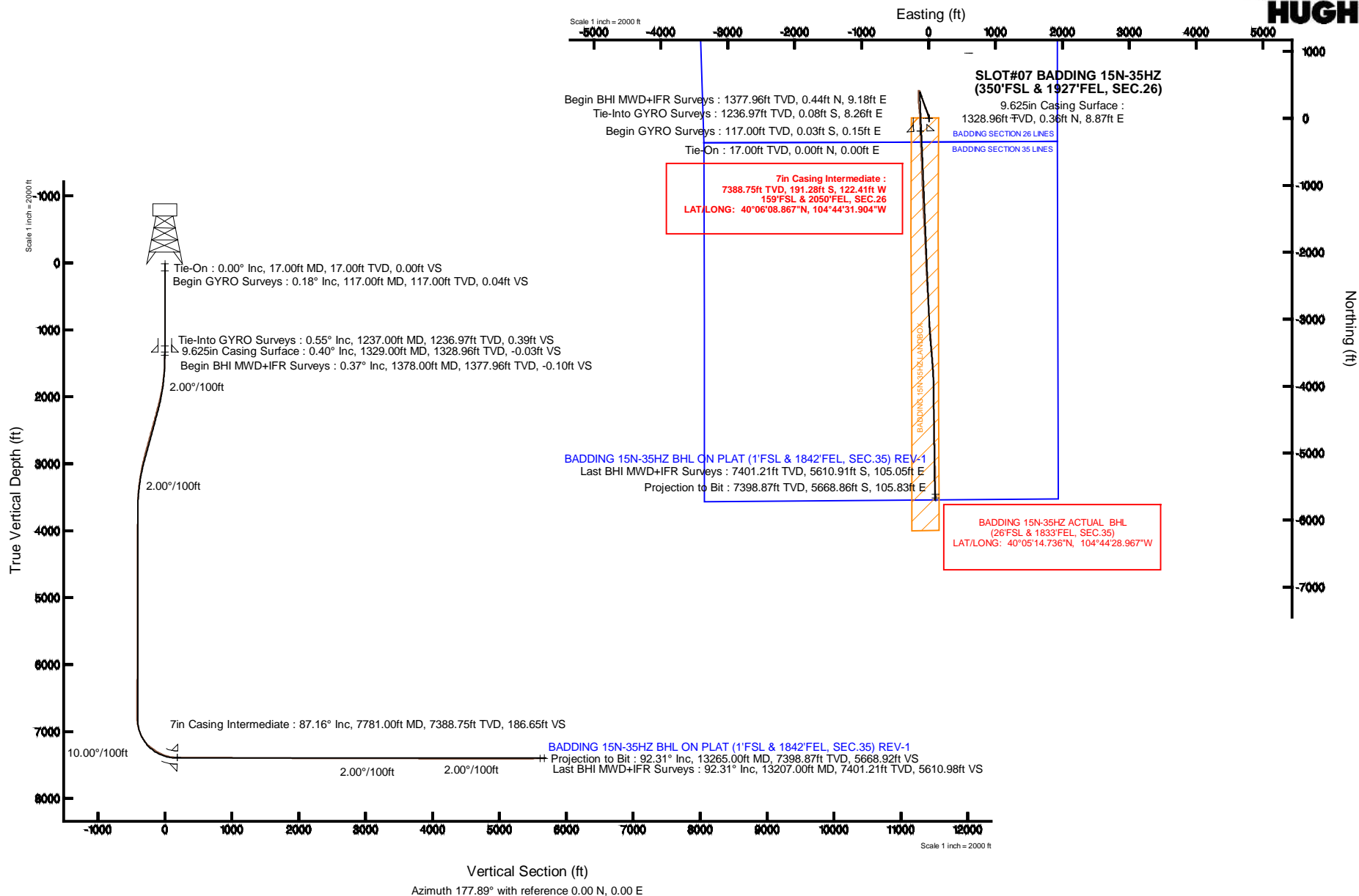


KERR-MCGEE OIL & GAS ONSHORE LP

Location: COLORADO Slot: SLOT#07 BADDING 15N-35HZ (350°FSL & 1927°FEL, SEC.26)
 Field: WELD COUNTY (KERR MCGEE) Well: BADDING 15N-35HZ
 Facility: SEC.26-T2N-R66W Wellbore: BADDING 15N-35HZ PWB

Plot reference wellpath is BADDING 15N-35HZ (REV-C.0) PWB

True vertical depths are referenced to XTREME 8 (17KB) (RKB)	Grid System: NAD83 / Lambert Colorado SP, Northern Zone (501), US feet
Measured depths are referenced to XTREME 8 (17KB) (RKB)	North Reference: True north
XTREME 8 (17KB) (RKB) to Mean Sea Level: 5129 feet	Scale: True distance
Mean Sea Level to Mud line (At Slot: SLOT#07 BADDING 15N-35HZ (350°FSL & 1927°FEL, SEC.26)): 0 feet	Depths are in feet
Coordinates are in feet referenced to Slot	Created by: preacin on 17/Apr/2014



Actual Wellpath Report

BADDING 15N-35HZ AWP

Page 1 of 7

REFERENCE WELLPATH IDENTIFICATION			
Operator	KERR-MCGEE OIL & GAS ONSHORE LP	Slot	SLOT#07 BADDING 15N-35HZ (350'FSL & 1927'FEL, SEC.26)
Area	COLORADO	Well	BADDING 15N-35HZ
Field	WELD COUNTY (KERR MCGEE)	Wellbore	BADDING 15N-35HZ AWB
Facility	SEC.26-T2N-R66W		

REPORT SETUP INFORMATION			
Projection System	NAD83 / Lambert Colorado SP, Northern Zone (501), US feet	Software System	WellArchitect® 4.0.0
North Reference	True	User	Precain
Scale	0.99996	Report Generated	17/Apr/2014 at 08:29
Convergence at slot	n/a	Database/Source file	WellArchitectDB/BADDING_15N-35HZ_AWB.xml

WELLPATH LOCATION						
	Local coordinates		Grid coordinates		Geographic coordinates	
	North[ft]	East[ft]	Easting[US ft]	Northing[US ft]	Latitude	Longitude
Slot Location	-5.45	-1223.24	3212100.84	1281269.70	40°06'10.757"N	104°44'30.329"W
Facility Reference Pt			3213323.93	1281285.67	40°06'10.811"N	104°44'14.587"W
Field Reference Pt			3197771.84	1268891.29	40°04'09.600"N	104°47'36.000"W

WELLPATH DATUM			
Calculation method	Minimum curvature	XTREME 8 (17'KB) (RKB) to Facility Vertical Datum	5129.00ft
Horizontal Reference Pt	Slot	XTREME 8 (17'KB) (RKB) to Mean Sea Level	5129.00ft
Vertical Reference Pt	XTREME 8 (17'KB) (RKB)	XTREME 8 (17'KB) (RKB) to Mud Line at Slot (SLOT#07 BADDING 15N-35HZ (350'FSL & 1927'FEL, SEC.26))	5129.00ft
MD Reference Pt	XTREME 8 (17'KB) (RKB)	Section Origin	N 0.00, E 0.00 ft
Field Vertical Reference	Mean Sea Level	Section Azimuth	177.89°

Actual Wellpath Report

BADDING 15N-35HZ AWP

Page 2 of 7

REFERENCE WELLPATH IDENTIFICATION

Operator	KERR-MCGEE OIL & GAS ONSHORE LP	Slot	SLOT#07 BADDING 15N-35HZ (350'FSL & 1927'FEL, SEC.26)
Area	COLORADO	Well	BADDING 15N-35HZ
Field	WELD COUNTY (KERR MCGEE)	Wellbore	BADDING 15N-35HZ AWB
Facility	SEC.26-T2N-R66W		

WELLPATH DATA (146 stations) † = interpolated/extrapolated station

MD [ft]	Inclination [°]	Azimuth [°]	TVD [ft]	Vert Sect [ft]	North [ft]	East [ft]	Latitude	Longitude	DLS [°/100ft]	Comments
0.00†	0.000	102.250	0.00	0.00	0.00	0.00	40°06'10.757"N	104°44'30.329"W	0.00	
17.00	0.000	102.250	17.00	0.00	0.00	0.00	40°06'10.757"N	104°44'30.329"W	0.00	Tie-On
117.00	0.180	102.250	117.00	0.04	-0.03	0.15	40°06'10.756"N	104°44'30.327"W	0.18	Begin GYRO Surveys
217.00	0.350	98.000	217.00	0.13	-0.11	0.61	40°06'10.756"N	104°44'30.321"W	0.17	
317.00	0.500	83.610	317.00	0.15	-0.10	1.35	40°06'10.756"N	104°44'30.311"W	0.18	
417.00	0.640	72.290	416.99	-0.03	0.12	2.31	40°06'10.758"N	104°44'30.299"W	0.18	
517.00	0.560	82.720	516.99	-0.22	0.35	3.33	40°06'10.760"N	104°44'30.286"W	0.14	
617.00	0.510	103.290	616.98	-0.15	0.31	4.25	40°06'10.760"N	104°44'30.274"W	0.20	
717.00	0.340	102.850	716.98	0.04	0.14	4.97	40°06'10.758"N	104°44'30.265"W	0.17	
817.00	0.440	113.200	816.98	0.28	-0.08	5.61	40°06'10.756"N	104°44'30.257"W	0.12	
917.00	0.370	100.670	916.97	0.52	-0.29	6.28	40°06'10.754"N	104°44'30.248"W	0.11	
1017.00	0.230	115.820	1016.97	0.69	-0.44	6.78	40°06'10.752"N	104°44'30.242"W	0.16	
1117.00	0.470	79.380	1116.97	0.72	-0.45	7.36	40°06'10.752"N	104°44'30.234"W	0.32	
1217.00	0.460	62.560	1216.97	0.49	-0.19	8.12	40°06'10.755"N	104°44'30.224"W	0.14	
1237.00	0.550	43.900	1236.97	0.39	-0.08	8.26	40°06'10.756"N	104°44'30.223"W	0.93	Tie-Into GYRO Surveys
1378.00	0.370	86.240	1377.96	-0.10	0.44	9.18	40°06'10.761"N	104°44'30.211"W	0.26	Begin BHI MWD+IFR Surveys
1473.00	1.790	8.320	1472.95	-1.57	1.92	9.70	40°06'10.776"N	104°44'30.204"W	1.84	
1569.00	3.460	349.170	1568.84	-5.90	6.25	9.38	40°06'10.819"N	104°44'30.208"W	1.94	
1660.00	5.830	344.720	1659.54	-13.12	13.41	7.64	40°06'10.889"N	104°44'30.230"W	2.63	
1752.00	7.260	345.990	1750.94	-23.36	23.56	5.00	40°06'10.990"N	104°44'30.264"W	1.56	
1844.00	9.590	341.990	1841.94	-36.42	36.49	1.23	40°06'11.117"N	104°44'30.313"W	2.61	
1936.00	11.600	341.030	1932.36	-52.64	52.52	-4.15	40°06'11.276"N	104°44'30.382"W	2.19	
2028.00	13.560	340.760	2022.15	-71.80	71.46	-10.71	40°06'11.463"N	104°44'30.467"W	2.13	
2119.00	15.100	337.360	2110.32	-93.10	92.47	-18.79	40°06'11.671"N	104°44'30.571"W	1.93	
2211.00	16.360	335.710	2198.87	-116.32	115.34	-28.73	40°06'11.897"N	104°44'30.699"W	1.45	
2300.00	16.490	335.140	2284.24	-139.57	138.23	-39.20	40°06'12.123"N	104°44'30.833"W	0.23	
2391.00	16.080	340.720	2371.59	-163.53	161.84	-48.79	40°06'12.356"N	104°44'30.957"W	1.78	
2483.00	15.850	340.540	2460.05	-187.69	185.71	-57.18	40°06'12.592"N	104°44'31.065"W	0.26	
2573.00	15.570	339.490	2546.68	-210.88	208.62	-65.51	40°06'12.818"N	104°44'31.172"W	0.44	
2665.00	16.390	341.910	2635.13	-235.08	232.52	-73.87	40°06'13.055"N	104°44'31.279"W	1.15	
2756.00	15.850	340.680	2722.55	-259.29	256.45	-81.97	40°06'13.291"N	104°44'31.384"W	0.70	
2848.00	15.450	340.130	2811.14	-282.96	279.83	-90.29	40°06'13.522"N	104°44'31.491"W	0.46	
2939.00	14.760	339.700	2899.00	-305.52	302.10	-98.43	40°06'13.742"N	104°44'31.595"W	0.77	
3030.00	13.960	340.780	2987.15	-327.02	323.34	-106.06	40°06'13.952"N	104°44'31.694"W	0.93	
3121.00	11.380	340.750	3075.93	-346.09	342.18	-112.64	40°06'14.138"N	104°44'31.778"W	2.84	
3213.00	10.270	341.130	3166.29	-362.62	358.51	-118.28	40°06'14.300"N	104°44'31.851"W	1.21	
3305.00	9.040	335.540	3256.99	-377.16	372.85	-123.93	40°06'14.441"N	104°44'31.924"W	1.68	
3390.00	6.870	337.690	3341.16	-388.11	383.64	-128.62	40°06'14.548"N	104°44'31.984"W	2.58	
3475.00	4.440	338.340	3425.74	-395.98	391.40	-131.77	40°06'14.625"N	104°44'32.025"W	2.86	
3561.00	3.080	324.650	3511.56	-401.05	396.38	-134.33	40°06'14.674"N	104°44'32.058"W	1.88	
3646.00	1.150	315.650	3596.50	-403.59	398.85	-136.25	40°06'14.698"N	104°44'32.082"W	2.30	
3731.00	0.830	343.110	3681.49	-404.82	400.05	-137.03	40°06'14.710"N	104°44'32.092"W	0.66	
3816.00	0.550	338.000	3766.48	-405.80	401.02	-137.36	40°06'14.720"N	104°44'32.097"W	0.34	
3987.00	0.740	349.450	3937.47	-407.66	402.86	-137.87	40°06'14.738"N	104°44'32.103"W	0.13	
4072.00	0.890	56.760	4022.46	-408.54	403.77	-137.42	40°06'14.747"N	104°44'32.097"W	1.07	

Actual Wellpath Report

BADDING 15N-35HZ AWP

Page 3 of 7

REFERENCE WELLPATH IDENTIFICATION

Operator	KERR-MCGEE OIL & GAS ONSHORE LP	Slot	SLOT#07 BADDING 15N-35HZ (350'FSL & 1927'FEL, SEC.26)
Area	COLORADO	Well	BADDING 15N-35HZ
Field	WELD COUNTY (KERR MCGEE)	Wellbore	BADDING 15N-35HZ AWB
Facility	SEC.26-T2N-R66W		

WELLPATH DATA (146 stations) † = interpolated/extrapolated station

MD [ft]	Inclination [°]	Azimuth [°]	TVD [ft]	Vert Sect [ft]	North [ft]	East [ft]	Latitude	Longitude	DLS [°/100ft]	Comments
4157.00	1.000	47.790	4107.45	-409.36	404.63	-136.32	40°06'14.755"N	104°44'32.083"W	0.22	
4243.00	1.630	74.020	4193.43	-410.14	405.47	-134.58	40°06'14.764"N	104°44'32.061"W	1.00	
4328.00	0.340	156.780	4278.42	-410.20	405.57	-133.32	40°06'14.765"N	104°44'32.045"W	1.91	
4499.00	0.240	168.610	4449.41	-409.37	404.75	-133.05	40°06'14.757"N	104°44'32.041"W	0.07	
4754.00	0.620	278.450	4704.41	-409.09	404.43	-134.31	40°06'14.753"N	104°44'32.057"W	0.29	
4839.00	0.770	271.350	4789.40	-409.21	404.51	-135.34	40°06'14.754"N	104°44'32.070"W	0.20	
4925.00	0.500	130.250	4875.40	-409.00	404.28	-135.63	40°06'14.752"N	104°44'32.074"W	1.40	
5095.00	0.670	98.170	5045.39	-408.32	403.66	-134.08	40°06'14.746"N	104°44'32.054"W	0.21	
5265.00	1.170	52.520	5215.37	-409.15	404.58	-131.72	40°06'14.755"N	104°44'32.024"W	0.50	
5350.00	1.410	332.910	5300.35	-410.60	406.04	-131.50	40°06'14.769"N	104°44'32.021"W	1.96	
5436.00	0.990	237.390	5386.34	-411.18	406.58	-132.61	40°06'14.775"N	104°44'32.035"W	2.09	
5521.00	0.560	298.550	5471.34	-411.02	406.38	-133.60	40°06'14.773"N	104°44'32.048"W	1.02	
5692.00	0.610	252.070	5642.33	-411.19	406.50	-135.20	40°06'14.774"N	104°44'32.069"W	0.27	
5862.00	0.550	299.370	5812.32	-411.37	406.62	-136.77	40°06'14.775"N	104°44'32.089"W	0.28	
6033.00	0.620	294.510	5983.31	-412.22	407.41	-138.32	40°06'14.783"N	104°44'32.109"W	0.05	
6288.00	0.760	333.750	6238.29	-414.38	409.50	-140.33	40°06'14.803"N	104°44'32.135"W	0.19	
6544.00	1.120	314.930	6494.26	-417.76	412.79	-142.85	40°06'14.836"N	104°44'32.167"W	0.18	
6629.00	0.460	262.590	6579.25	-418.34	413.33	-143.78	40°06'14.841"N	104°44'32.179"W	1.08	
6757.00	1.300	283.970	6707.24	-418.69	413.61	-145.70	40°06'14.844"N	104°44'32.204"W	0.69	
6799.00	1.340	252.210	6749.23	-418.69	413.58	-146.63	40°06'14.844"N	104°44'32.216"W	1.72	
6842.00	2.890	200.620	6792.20	-417.55	412.41	-147.49	40°06'14.832"N	104°44'32.227"W	5.37	
6885.00	5.460	187.440	6835.08	-414.54	409.37	-148.13	40°06'14.802"N	104°44'32.235"W	6.34	
6927.00	9.040	184.840	6876.74	-409.29	404.09	-148.67	40°06'14.750"N	104°44'32.242"W	8.56	
6970.00	12.110	187.370	6919.00	-401.48	396.25	-149.53	40°06'14.673"N	104°44'32.253"W	7.22	
7012.00	15.890	187.410	6959.75	-391.46	386.18	-150.84	40°06'14.573"N	104°44'32.270"W	9.00	
7055.00	20.110	184.600	7000.64	-378.31	372.97	-152.19	40°06'14.443"N	104°44'32.287"W	10.02	
7098.00	24.540	181.830	7040.40	-362.05	356.67	-153.07	40°06'14.281"N	104°44'32.299"W	10.59	
7140.00	28.720	181.030	7077.94	-343.27	337.85	-153.53	40°06'14.095"N	104°44'32.305"W	9.99	
7183.00	33.350	180.000	7114.77	-321.13	315.69	-153.72	40°06'13.876"N	104°44'32.307"W	10.84	
7226.00	37.700	177.770	7149.76	-296.15	290.72	-153.21	40°06'13.630"N	104°44'32.300"W	10.55	
7268.00	42.900	175.340	7181.79	-269.01	263.62	-151.54	40°06'13.362"N	104°44'32.279"W	12.93	
7311.00	48.280	175.110	7211.87	-238.34	233.02	-148.98	40°06'13.060"N	104°44'32.246"W	12.52	
7354.00	52.730	174.740	7239.21	-205.21	199.97	-146.05	40°06'12.733"N	104°44'32.208"W	10.37	
7396.00	56.130	174.340	7263.64	-171.11	165.97	-142.79	40°06'12.397"N	104°44'32.166"W	8.13	
7439.00	57.230	173.640	7287.26	-135.26	130.24	-139.03	40°06'12.044"N	104°44'32.118"W	2.90	
7482.00	60.850	174.970	7309.37	-98.47	93.55	-135.38	40°06'11.681"N	104°44'32.071"W	8.83	
7524.00	64.400	176.770	7328.68	-61.20	56.36	-132.70	40°06'11.314"N	104°44'32.037"W	9.27	
7567.00	67.490	177.580	7346.21	-21.95	17.15	-130.77	40°06'10.926"N	104°44'32.012"W	7.39	
7609.00	71.930	178.080	7360.77	17.44	-22.21	-129.28	40°06'10.537"N	104°44'31.993"W	10.63	
7652.00	77.150	177.150	7372.23	58.87	-63.60	-127.56	40°06'10.128"N	104°44'31.970"W	12.32	
7695.00	81.490	177.840	7380.20	101.11	-105.80	-125.71	40°06'09.711"N	104°44'31.947"W	10.22	
7737.00	84.190	177.850	7385.43	142.78	-147.44	-124.14	40°06'09.300"N	104°44'31.926"W	6.43	
7781.00†	87.164	177.609	7388.75	186.65	-191.28	-122.41	40°06'08.867"N	104°44'31.904"W	6.78	7" Casing Point
7812.00	89.260	177.440	7389.71	217.63	-222.23	-121.07	40°06'08.561"N	104°44'31.887"W	6.78	
7882.00	90.090	177.300	7390.11	287.63	-292.16	-117.86	40°06'07.870"N	104°44'31.845"W	1.20	

Actual Wellpath Report

BADDING 15N-35HZ AWP

Page 4 of 7

REFERENCE WELLPATH IDENTIFICATION

Operator	KERR-MCGEE OIL & GAS ONSHORE LP	Slot	SLOT#07 BADDING 15N-35HZ (350'FSL & 1927'FEL, SEC.26)
Area	COLORADO	Well	BADDING 15N-35HZ
Field	WELD COUNTY (KERR MCGEE)	Wellbore	BADDING 15N-35HZ AWB
Facility	SEC.26-T2N-R66W		

WELLPATH DATA (146 stations)

MD [ft]	Inclination [°]	Azimuth [°]	TVD [ft]	Vert Sect [ft]	North [ft]	East [ft]	Latitude	Longitude	DLS [°/100ft]	Comments
7968.00	90.770	177.770	7389.47	373.62	-378.08	-114.16	40°06'07.021"N	104°44'31.798"W	0.96	
8053.00	90.460	178.190	7388.55	458.62	-463.02	-111.16	40°06'06.181"N	104°44'31.759"W	0.61	
8138.00	90.180	178.170	7388.08	543.61	-547.97	-108.46	40°06'05.342"N	104°44'31.725"W	0.33	
8308.00	89.560	177.880	7388.46	713.61	-717.87	-102.60	40°06'03.663"N	104°44'31.649"W	0.40	
8394.00	89.960	177.750	7388.83	799.61	-803.81	-99.32	40°06'02.813"N	104°44'31.607"W	0.49	
8565.00	89.190	177.760	7390.09	970.61	-974.67	-92.63	40°06'01.125"N	104°44'31.521"W	0.45	
8736.00	89.320	177.820	7392.32	1141.59	-1145.53	-86.03	40°05'59.437"N	104°44'31.436"W	0.08	
8906.00	90.460	177.800	7392.64	1311.59	-1315.40	-79.54	40°05'57.758"N	104°44'31.352"W	0.67	
8991.00	89.100	176.730	7392.97	1396.58	-1400.30	-75.48	40°05'56.919"N	104°44'31.300"W	2.04	
9077.00	89.750	176.810	7393.83	1482.56	-1486.16	-70.64	40°05'56.070"N	104°44'31.238"W	0.76	
9162.00	89.410	176.950	7394.46	1567.54	-1571.03	-66.01	40°05'55.232"N	104°44'31.178"W	0.43	
9247.00	89.290	176.330	7395.42	1652.52	-1655.88	-61.03	40°05'54.393"N	104°44'31.114"W	0.74	
9417.00	89.590	177.040	7397.08	1822.47	-1825.58	-51.20	40°05'52.716"N	104°44'30.988"W	0.45	
9503.00	89.320	177.440	7397.90	1908.46	-1911.48	-47.06	40°05'51.867"N	104°44'30.934"W	0.56	
9588.00	90.060	177.560	7398.36	1993.45	-1996.40	-43.35	40°05'51.028"N	104°44'30.887"W	0.88	
9673.00	89.130	177.920	7398.96	2078.45	-2081.33	-40.00	40°05'50.189"N	104°44'30.843"W	1.17	
9758.00	89.810	178.090	7399.75	2163.45	-2166.27	-37.04	40°05'49.349"N	104°44'30.805"W	0.82	
9844.00	88.300	176.610	7401.16	2249.43	-2252.16	-33.06	40°05'48.501"N	104°44'30.754"W	2.46	
9929.00	89.440	177.120	7402.84	2334.39	-2337.02	-28.42	40°05'47.662"N	104°44'30.694"W	1.47	
10014.00	90.150	177.380	7403.15	2419.39	-2421.92	-24.34	40°05'46.823"N	104°44'30.642"W	0.89	
10099.00	89.960	176.460	7403.06	2504.37	-2506.80	-19.77	40°05'45.984"N	104°44'30.583"W	1.11	
10185.00	90.240	176.220	7402.91	2590.34	-2592.62	-14.28	40°05'45.136"N	104°44'30.513"W	0.43	
10270.00	90.700	176.350	7402.22	2675.31	-2677.44	-8.77	40°05'44.298"N	104°44'30.442"W	0.56	
10355.00	90.150	176.210	7401.59	2760.27	-2762.26	-3.26	40°05'43.460"N	104°44'30.371"W	0.67	
10440.00	90.610	176.350	7401.02	2845.23	-2847.08	2.26	40°05'42.622"N	104°44'30.300"W	0.57	
10525.00	89.810	176.310	7400.71	2930.20	-2931.90	7.70	40°05'41.783"N	104°44'30.230"W	0.94	
10611.00	89.840	175.960	7400.97	3016.16	-3017.70	13.49	40°05'40.935"N	104°44'30.155"W	0.41	
10696.00	88.950	175.590	7401.87	3101.10	-3102.47	19.76	40°05'40.098"N	104°44'30.075"W	1.13	
10866.00	89.690	175.620	7403.89	3270.95	-3271.95	32.78	40°05'38.423"N	104°44'29.907"W	0.44	
10952.00	90.300	175.770	7403.90	3356.88	-3357.71	39.24	40°05'37.575"N	104°44'29.824"W	0.73	
11037.00	89.660	175.300	7403.93	3441.81	-3442.45	45.85	40°05'36.738"N	104°44'29.739"W	0.93	
11122.00	90.400	175.230	7403.88	3526.72	-3527.16	52.87	40°05'35.901"N	104°44'29.649"W	0.87	
11207.00	89.810	175.280	7403.73	3611.63	-3611.87	59.90	40°05'35.064"N	104°44'29.558"W	0.70	
11293.00	89.780	175.770	7404.03	3697.56	-3697.61	66.61	40°05'34.216"N	104°44'29.472"W	0.57	
11378.00	89.470	176.870	7404.59	3782.52	-3782.43	72.07	40°05'33.378"N	104°44'29.402"W	1.34	
11463.00	89.470	178.040	7405.38	3867.51	-3867.34	75.84	40°05'32.539"N	104°44'29.353"W	1.38	
11549.00	89.870	179.580	7405.87	3953.50	-3953.32	77.63	40°05'31.690"N	104°44'29.330"W	1.85	
11634.00	89.560	179.560	7406.29	4038.46	-4038.31	78.27	40°05'30.850"N	104°44'29.322"W	0.37	
11719.00	90.060	179.770	7406.58	4123.42	-4123.31	78.76	40°05'30.010"N	104°44'29.315"W	0.64	
11805.00	89.870	179.430	7406.63	4209.38	-4209.31	79.36	40°05'29.160"N	104°44'29.308"W	0.45	
11890.00	90.210	179.240	7406.57	4294.35	-4294.30	80.35	40°05'28.320"N	104°44'29.295"W	0.46	
11975.00	89.660	179.090	7406.67	4379.33	-4379.29	81.59	40°05'27.480"N	104°44'29.279"W	0.67	
12060.00	89.590	178.760	7407.22	4464.32	-4464.28	83.18	40°05'26.640"N	104°44'29.259"W	0.40	
12146.00	89.500	178.820	7407.90	4550.30	-4550.25	85.00	40°05'25.790"N	104°44'29.235"W	0.13	
12231.00	89.620	178.540	7408.56	4635.29	-4635.23	86.96	40°05'24.951"N	104°44'29.210"W	0.36	

Actual Wellpath Report

BADDING 15N-35HZ AWP

Page 5 of 7

REFERENCE WELLPATH IDENTIFICATION

Operator	KERR-MCGEE OIL & GAS ONSHORE LP	Slot	SLOT#07 BADDING 15N-35HZ (350'FSL & 1927'FEL, SEC.26)
Area	COLORADO	Well	BADDING 15N-35HZ
Field	WELD COUNTY (KERR MCGEE)	Wellbore	BADDING 15N-35HZ AWB
Facility	SEC.26-T2N-R66W		

WELLPATH DATA (146 stations)

MD [ft]	Inclination [°]	Azimuth [°]	TVD [ft]	Vert Sect [ft]	North [ft]	East [ft]	Latitude	Longitude	DLS [°/100ft]	Comments
12316.00	89.720	178.770	7409.05	4720.28	-4720.20	88.95	40°05'24.111"N	104°44'29.184"W	0.30	
12401.00	90.000	179.140	7409.25	4805.27	-4805.19	90.50	40°05'23.271"N	104°44'29.164"W	0.55	
12486.00	90.060	179.100	7409.21	4890.25	-4890.18	91.81	40°05'22.431"N	104°44'29.148"W	0.08	
12572.00	89.630	178.680	7409.44	4976.24	-4976.16	93.47	40°05'21.582"N	104°44'29.126"W	0.70	
12656.00	89.410	178.700	7410.15	5060.22	-5060.14	95.39	40°05'20.752"N	104°44'29.101"W	0.26	
12740.00	89.900	178.700	7410.65	5144.21	-5144.11	97.30	40°05'19.922"N	104°44'29.077"W	0.58	
12910.00	90.800	178.940	7409.61	5314.19	-5314.07	100.80	40°05'18.242"N	104°44'29.032"W	0.55	
12996.00	91.260	179.040	7408.07	5400.16	-5400.05	102.32	40°05'17.393"N	104°44'29.012"W	0.55	
13081.00	91.840	179.360	7405.77	5485.10	-5485.01	103.50	40°05'16.553"N	104°44'28.997"W	0.78	
13207.00	92.310	179.230	7401.21	5610.98	-5610.91	105.05	40°05'15.309"N	104°44'28.977"W	0.39	Last BHI MWD+IFR Surveys
13265.00	92.310	179.230	7398.87	5668.92	-5668.86	105.83	40°05'14.736"N	104°44'28.967"W	0.00	Projection to Bit

HOLE & CASING SECTIONS - Ref Wellbore: BADDING 15N-35HZ AWB Ref Wellpath: BADDING 15N-35HZ AWP

String/Diameter	Start MD [ft]	End MD [ft]	Interval [ft]	Start TVD [ft]	End TVD [ft]	Start N/S [ft]	Start E/W [ft]	End N/S [ft]	End E/W [ft]
13.5in Open Hole	17.00	1339.00	1322.00	17.00	1338.96	0.00	0.00	0.38	8.93
9.625in Casing Surface	17.00	1329.00	1312.00	17.00	1328.96	0.00	0.00	0.36	8.87
8.75in Open Hole	1339.00	7791.00	6452.00	1338.96	7389.18	0.38	8.93	-201.26	-121.98
7in Casing Intermediate	17.00	7781.00	7764.00	17.00	7388.75	0.00	0.00	-191.28	-122.41
6.125in Open Hole	7791.00	13265.00	5474.00	7389.18	7398.87	-201.26	-121.98	-5668.86	105.83

Actual Wellpath Report

BADDING 15N-35HZ AWP

Page 6 of 7

REFERENCE WELLPATH IDENTIFICATION			
Operator	KERR-MCGEE OIL & GAS ONSHORE LP	Slot	SLOT#07 BADDING 15N-35HZ (350'FSL & 1927'FEL, SEC.26)
Area	COLORADO	Well	BADDING 15N-35HZ
Field	WELD COUNTY (KERR MCGEE)	Wellbore	BADDING 15N-35HZ AWB
Facility	SEC.26-T2N-R66W		

TARGETS									
Name	MD [ft]	TVD [ft]	North [ft]	East [ft]	Grid East [US ft]	Grid North [US ft]	Latitude	Longitude	Shape
BADDING SECTION 26 LINES		-3.00	5.51	1223.31	3213324.01	1281285.67	40°06'10.811"N	104°44'14.586"W	polygon
BADDING SECTION 35 LINES		-3.00	5.51	1223.31	3213324.01	1281285.67	40°06'10.811"N	104°44'14.586"W	polygon
SHAHER USX W 35-6 (150' CIRCLE)		7331.00	-2116.40	-1723.43	3210395.64	1279138.73	40°05'49.842"N	104°44'52.506"W	circle
SHAHER 31-35 (150' CIRCLE)		7361.00	-826.16	-384.26	3211723.68	1280440.32	40°06'02.593"N	104°44'35.274"W	circle
BADDING 15N-35HZ BHL ON PLAT (1'FSL & 1842'FEL, SEC.35) REV-1		7394.00	-5694.26	94.57	3212244.10	1275576.69	40°05'14.485"N	104°44'29.112"W	point
BADDING 15N-35HZ LANDBOX		7394.00	0.00	0.00	3212100.84	1281269.70	40°06'10.757"N	104°44'30.329"W	polygon
SHAHER USX W 35-7 (150' CIRCLE)		7400.00	-2102.17	132.87	3212251.68	1279168.83	40°05'49.983"N	104°44'28.619"W	circle
SHAHER 12-35 (150' CIRCLE)		7409.00	-2203.00	-2785.00	3209334.90	1279043.06	40°05'48.985"N	104°45'06.166"W	circle
BADDING USX W 35-3 (150' CIRCLE)		7418.00	-1161.58	-1503.73	3210607.16	1280095.35	40°05'59.277"N	104°44'49.679"W	circle
BADDING USX W 35-8 (150' CIRCLE)		7421.00	-2155.00	1189.42	3213308.59	1279125.04	40°05'49.460"N	104°44'15.023"W	circle
BADDING USX W 35-1 (150' CIRCLE)		7432.00	-1091.94	1172.70	3213282.79	1280187.87	40°05'59.966"N	104°44'15.238"W	circle

WELLPATH COMPOSITION - Ref Wellbore: BADDING 15N-35HZ AWB Ref Wellpath: BADDING 15N-35HZ AWP				
Start MD [ft]	End MD [ft]	Positional Uncertainty Model	Log Name/Comment	Wellbore
17.00	1237.00	Generic gyro - continuous (Standard)	MS ENERGY GYRO SURVEYS <117-1237>	BADDING 15N-35HZ AWB
1237.00	7737.00	NaviTrak (MAGCORR,IFR)	BHI MWD+IFR SURVEYS 8 3/4" HOLE <1378-7737>	BADDING 15N-35HZ AWB
7737.00	13207.00	NaviTrak (MAGCORR,IFR)	BHI MWD+IFR SURVEYS 6 1/8" HOLE <7812-13207>	BADDING 15N-35HZ AWB
13207.00	13265.00	Blind Drilling (std)	Projection to bit	BADDING 15N-35HZ AWB

Actual Wellpath Report

BADDING 15N-35HZ AWP

Page 7 of 7

REFERENCE WELLPATH IDENTIFICATION			
Operator	KERR-MCGEE OIL & GAS ONSHORE LP	Slot	SLOT#07 BADDING 15N-35HZ (350'FSL & 1927'FEL, SEC.26)
Area	COLORADO	Well	BADDING 15N-35HZ
Field	WELD COUNTY (KERR MCGEE)	Wellbore	BADDING 15N-35HZ AWB
Facility	SEC.26-T2N-R66W		

WELLPATH COMMENTS				
MD [ft]	Inclination [°]	Azimuth [°]	TVD [ft]	Comment
17.00	0.000	102.250	17.00	Tie-On
117.00	0.180	102.250	117.00	Begin GYRO Surveys
1237.00	0.550	43.900	1236.97	Tie-Into GYRO Surveys
1378.00	0.370	86.240	1377.96	Begin BHI MWD+IFR Surveys
7781.00	87.164	177.609	7388.75	7" Casing Point
13207.00	92.310	179.230	7401.21	Last BHI MWD+IFR Surveys
13265.00	92.310	179.230	7398.87	Projection to Bit