



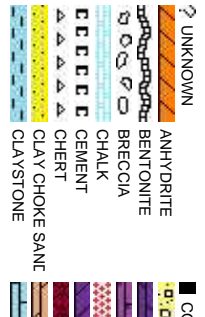
Scale: 5" / 100'
Measured Depth Log

| | | | |
|-------------------------|---|--------------------|------------|
| Well Name | BADDING 15N-35HZ | | |
| Location | SEC 26 T2N R66W | | |
| State | COLORADO | County | WELD |
| Country | USA | Rig Number | XTREME 8 |
| API Number | 051233841000 | AFE # | 2086548 |
| Region | DJ BASIN | Field | WATTENBERG |
| Spud Date | 1/30/2014 | Drilling Completed | 2/6/2014 |
| Surface Coordinates | 350' FSL, 1927' FEL LAT 40.102988 LON -104.741758 | | |
| Bottom Hole Coordinates | 1' FSL, 1842' FEL LAT 40.087357 LON -104.741420 | | |
| Ground Elevation | 5114' | K.B. Elevation | 5146' |
| Logged Interval | 6846' | To | 13265' |
| Formation | NIOBRARA | Total Depth | 6419' |
| Type of Drilling Fluid | FW LSND | | |

Company ANADARKO PE
Address 1099 18th, Suite

Name JOSH GARRET
Company ANADARKO
Address 1099 18th, Suite

LEAD: ROBERT DAVIS
2ND: PAUL KRUGER



Operator

PETROLEUM COMPANY

1800 Denver, CO 80202

Geologist

1800 Denver, CO 80202

Other

Rock Types

| | | |
|----------------------|------------------|-----------------|
| CONGLOMERATE | MARLSTONE | SHALY SANDSTONE |
| DOLomite | METAMORPHIC | SHALY SILTSTONE |
| DOLomite | NO SAMPLE | SILTSTONE |
| DOLomite | SALT | SILTSTONE |
| GRANITE | SANDSTONE | TILL |
| GYPSUM | SALT-PEPPER SAND | TUFF |
| IGNEOUS | SHALE | WELDED TUFF |
| SIDERITE or LIMONITE | SHALE COLORED | |
| LIMESTONE | SHALE GRAY | |

Accessories

| | | | |
|----------------|---------------------|---------------------|--------------------|
| Fossils | GASTROPOD | ARGILLITE GRAIN | HEAVY MINERAL |
| INOCERAMUS | B BENTONITE | K KAOLIN | ANHYDRITE STRINGER |
| ALGAE | O OOLITE | M MARLSTONE | COAL STRINGER |
| AMPHIPORA | O OSTRACOD | MICACEOUS | DOLOMITE STRINGER |
| BELEMNITE | P PELECYPOD | CALCAREOUS | GYPSUM STRINGER |
| BIOCLASTIC | P PELLET | CARBONACEOUS FLAKES | LIMESTONE STRINGER |
| BRACHIOPOD | P PISOLITE | CHERT | N NODULES |
| BRYOZOA | PLANT REMAINS | CHERT | PHOSPHATE PELLETS |
| CEPHALOPOD | PLANT SPORES | COAL - THIN BEDS | P PYRITE |
| CORAL | SCAPHOPOD | DOLOMITE | S SALT CAST |
| CRINOID | STROMATOPOROID | FELDSPAR | S SANDY |
| ECHINOID | FERRUGINOUS PELLETT | F FERRUGINOUS | S SILTY |
| FISH | Minerals | T TUFFACEOUS | |
| FORAMINIFERA | ANHYDRITIC | GLAUCONITE | |
| F FOSSIL | ARGILLACEOUS | GYPSIFEROUS | Stringer |

Other Symbols

| | | | | |
|-------------------|-----------------------|-----------------------|------------------------|--------------|
| Oil Show | P PINPOINT | DST INTERVAL | WIRELINE TESTED - LEFT | E EARTHY |
| V VUGGY | FAULT | WIRELINE TESTED - RT | FINELY LXXLN | |
| D DEAD | FORMATION TOP | DRILL STEM TEST | G GRAINSTONE | |
| E EVEN | GAS SHOW | MN DEPTH | L LITHOGRAPHIC | |
| Q QUESTIONABLE | BIT | OIL SHOW | M MICROXLN | |
| SPOTTED STAINING | CONNECTION (UP) | MN DEPTH UP | M MUDSTONE | |
| CONNECTION (DOWN) | MN DEPTH (DOWN) | A ANGULAR | P PACKSTONE | |
| Porosity | CONNECTION GAS | NORMAL FAULT | R ROUNDED | W WACKESTONE |
| E EARTHY | CONNECTION GAS (LEFT) | OVERTURNED STRATA | S SUBANG | |
| F FENESTRAL | TRIP GAS | REVERSE FAULT | S SUBRND | |
| F FRACTURE | TRIP GAS (LEFT) | CASING | M MODERATE | |
| INTERCRYSTALLINE | DOWN TIME GAS | SIDEWALL CORE (LEFT) | P POOR | |
| INTERCRYSTALLINE | DOWN TIME GAS (LEFT) | SIDEWALL CORE (RIGHT) | W WELL | |
| MOLDIC | CORE - LOST | SLIDE | C CHALKY | |
| O ORGANIC | CORE - RECOVERED | SURVEY | C CRYPTOXLN | |

Slide/Rotate

Bit Data

Bit #: 1
Type: BAKER
Size: 8.75
Depth In: 5,143 '
S/N: 7039418

ROP

ROF
GAMMA

ROP

113

100

Total Gas & Chromatograph

GAS
C1
C2
C3
C4

Columbine Logging Two Man Rigged
Up 1000hrs 1/31/2014 With Bloodhound
Unit # 0650
Logging Began @ 17:33hrs 1/31/2014
at 6846' MD

2473u
C1: 74.5%
C2: 13.9%
C3: 11.1%
C4: 0.5%

Depth Labels

6,790 6,800 6,810 6,820 6,830 6,840 6,850 6,860 6,870 6,880 6,890 6,900 6,910 6,920 6,930 6,940 6,950 6,960 6

% Lith

Acetone was used
as the cutting agent
with the dimple filled
to the rim.

The ratings are based
on 7 descriptors:

None, Slight trace, Trace,
Fair, Moderate, Good, and
Excellent. The descriptor
used is based on the loggers
observations and best
judgment of brilliance,
color and longevity of the cut.

Well Bore

TVD

Oil Show

7500

SLTY SH: dk-med gy-gy brn, sb ply-sb
blky, med sft-frm, mod fri-sl brlt, v sl calc, v
silty, low stmg milky bl cut, dull gn ring

SLTY SH: dk-med gy-gy brn, sb ply-sb
blky, med sft-frm, mod fri-sl brlt, v sl calc,
v silty, low stmg milky bl cut, dull gn ring

SLTY SH: dk-
blky, med sft-
v silty, low str

MD: 6842 '
TVD: 6792.20 '
Inclination: 2.89 °
Azimuth: 200.62 °
VS: -417.57 '

MD: 6885 '
TVD: 6835.08 '
Inclination: 5.46 °
Azimuth: 187.44 °
VS: -414.55 '

MD: 6927 '
TVD: 6876.74 '
Inclination: 9.04 °
Azimuth: 184.84 °
VS: -409.31 '

MD: 69
TVD: 6
Inclina
Azimu
VS: -4

Images





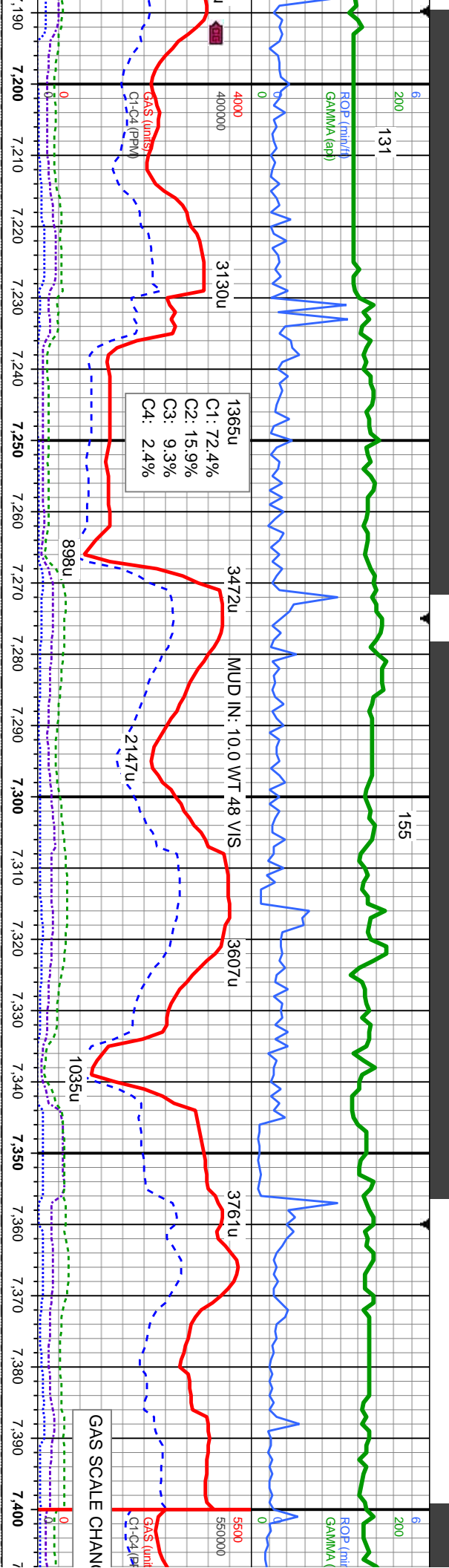
VS: -362.07'

VS: -343.28'

Azimuth: 180

VS: -321.14'

[illegible]

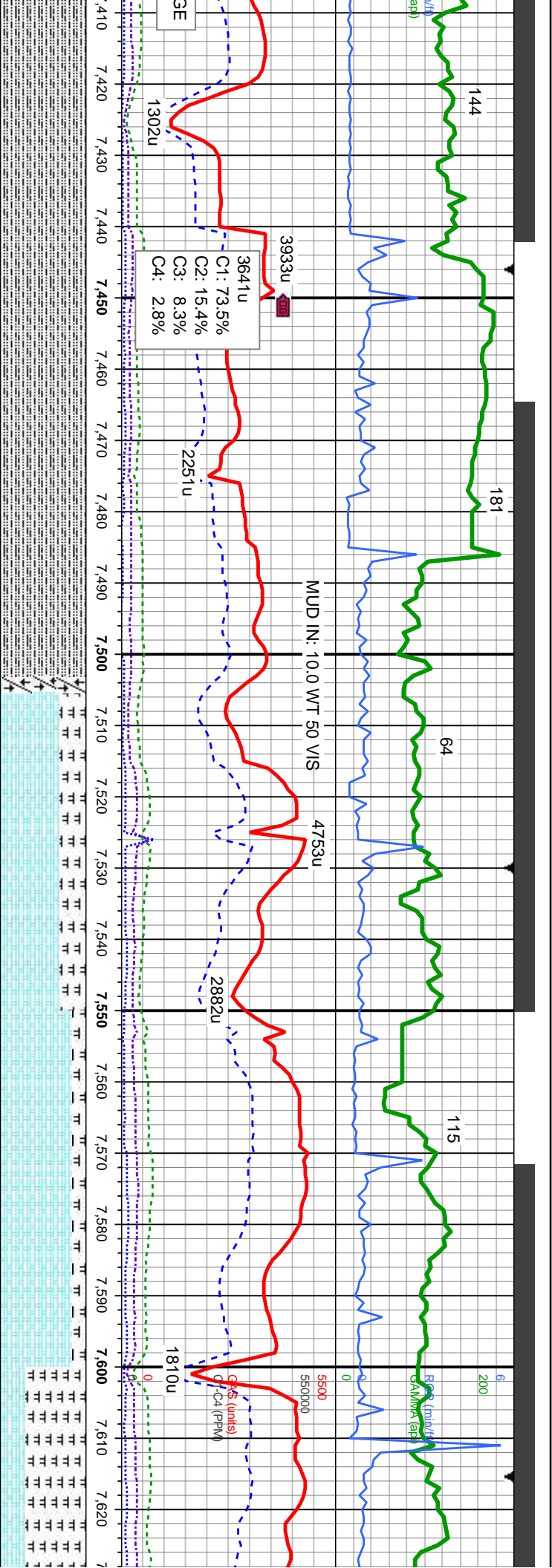


TVD SCALE CHANGE



| | | | | |
|--|--|--|--|--|
| SLTY SH: dk-med gy-gy brn, sb ply-sb blkly, med sft-frm, mod fri-sl brit, v sl calc, v slty, low stmg milky bl cut, dull gn ring | SLTY SH: dk-med gy-gy brn, sb ply-sb blkly, med sft-frm, mod fri-sl brit, v sl calc, v slty, low stmg milky bl cut, dull gn ring | SLTY SH: dk-med gy-gy brn, sb ply-sb blkly, med sft-frm, mod fri-sl brit, v sl calc, v slty, low stmg milky bl cut, dull gn ring | SLTY SH: dk-med gy-gy brn, sb ply-sb blkly, med sft-frm, mod fri-sl brit, v sl calc, v slty, low stmg milky bl cut, dull gn ring | SLTY SH: dk-med gy-gy brn, sb ply-sb blkly, med sft-frm, mod fri-sl brit, v sl calc, v slty, low stmg milky bl cut, dull gn ring |
|--|--|--|--|--|





MD: 7,439' TVD: 7,287.26' Inclination: 57.23° Azimuth: 173.64° VS: -135.28'

Sharon Springs: 7,465' MD 7,301' TVD

MD: 7,482' TVD: 7,309.38' Inclination: 60.85° Azimuth: 174.97° VS: -98.49'

Fault @ 7,504' 116' upthrow

MD: 7,524' TVD: 7,328.69' Inclination: 64.4° Azimuth: 176.77° VS: -61.22'

MD: 7,567' TVD: 7,346.21' Inclination: 67.49° Azimuth: 177.58° VS: -21.96'

MD: 7,609' TVD: 7,360' Inclination: 71.63° Azimuth: 178.08° VS: 17.42'

SH: dk-med gy-gy brn, sb pily-sb med sft-fm, mod fri-sl brit, v sl calc, v low stmg milky bl cut, dull gn ring

SLTY SH: dk-med gy-gy brn, sb pily-sb blky, med sft-fm, mod fri-sl brit, v sl calc, v silty, low stmg milky bl cut, dull gn ring

CHK:lt-med gy, sb blky, sft, mot tex, v calc, MRLST: med-dk gy, sb blky, med sft-fm, silty tex, v calc, mod stmg milky bl cut, dull gn ring

CHK:lt-med gy, sb blky, sft, mot tex, v calc, MRLST: med-dk gy, sb blky, med sft-fm, silty tex, v calc, mod stmg milky bl cut, dull gn ring

MRLST: med-dk gy, sft-fm, silty tex, v calc, sb blky, sft, mot tex, milky bl cut, dull gn r



02/04/2014

MD DEPT

63MM/ft

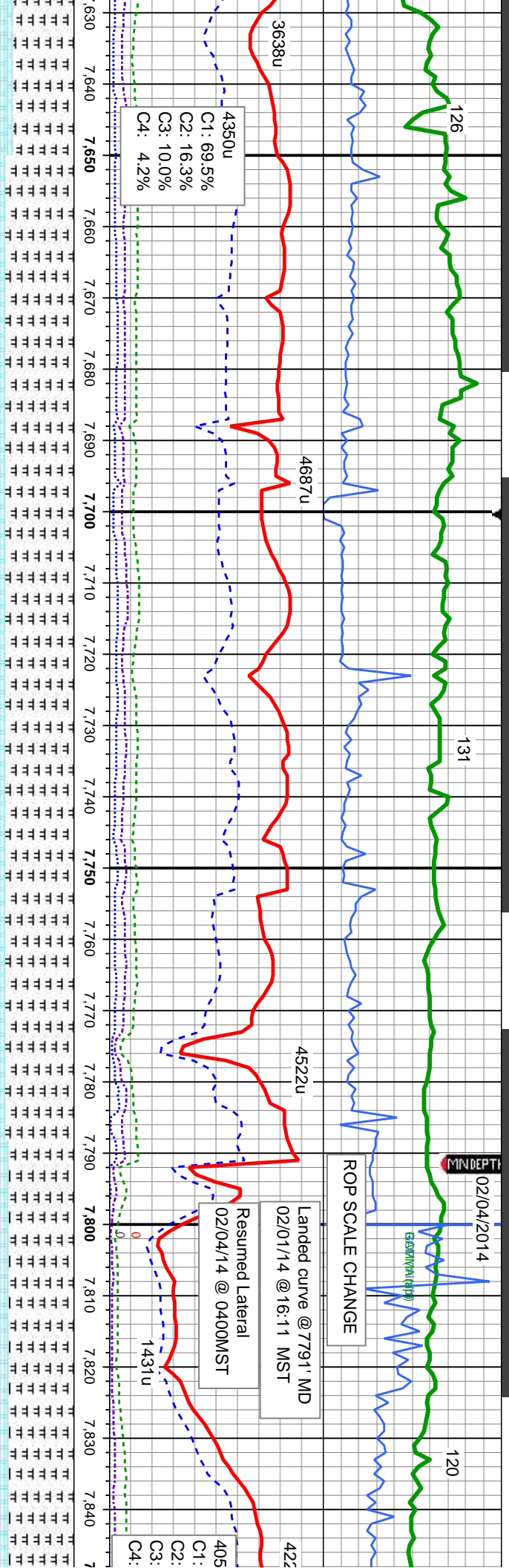
ROP SCALE CHANGE

Landed curve @ 7791' MD
02/01/14 @ 16:11 MST

Resumed Lateral
02/04/14 @ 0400MST

4350u
C1: 69.5%
C2: 16.3%
C3: 10.0%
C4: 4.2%

405
C1:
C2:
C3:
C4:



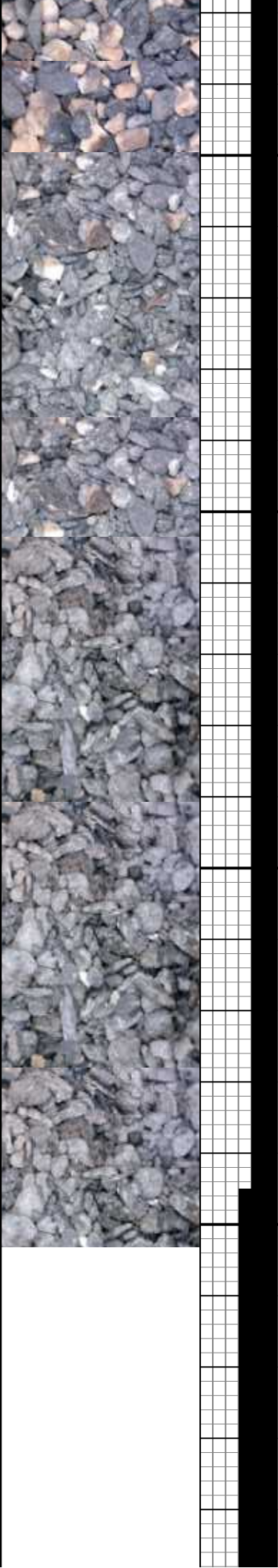
MD: 7,652'
TVD: 7,372.23'
Inclination: 77.15 °
Azimuth: 177.15 °
VS: 58.85'

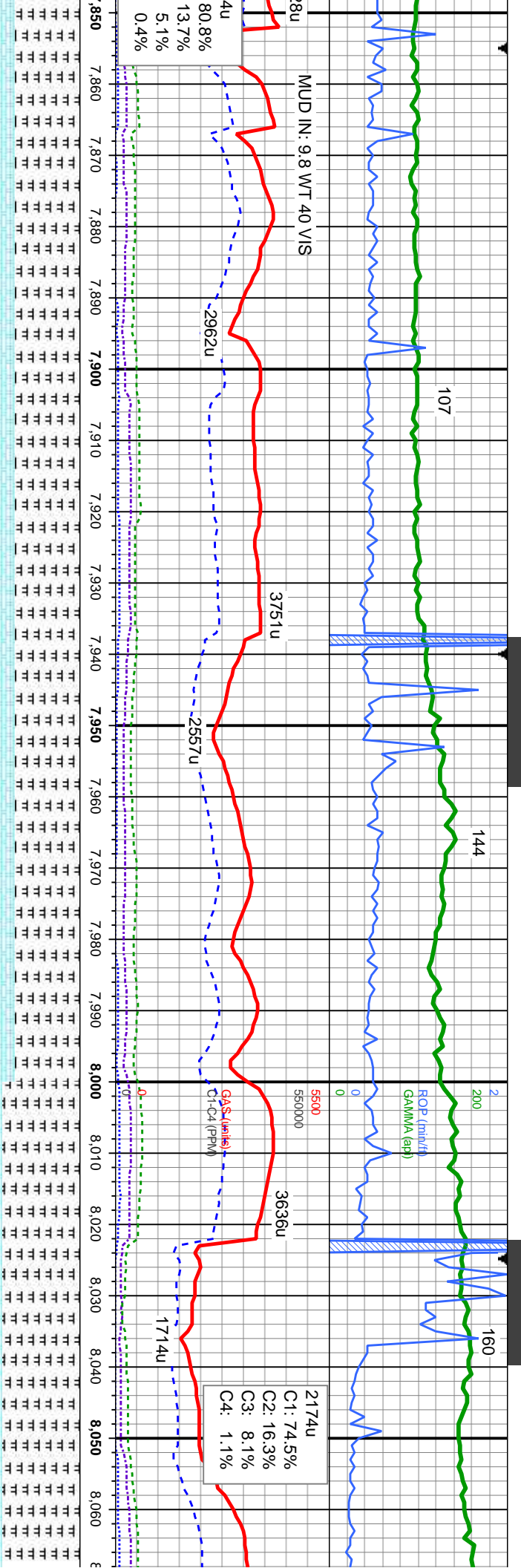
MD: 7695'
TVD: 7380.20'
Inclination: 81.49 °
Azimuth: 177.84 °
VS: 101.09'

MD: 7737'
TVD: 7385.43'
Inclination: 84.19 °
Azimuth: 177.85 °
VS: 142.76'

MD: 7,812'
TVD: 7,389.73'
Inclination: 89.26 °
Azimuth: 177.44 °
VS: 213.11'

| | | | | | |
|--|--|--|--|--|--|
| sb blkly, med | MR LST: med-dk gy, sb blkly, med | MR LST: med-dk gy, sb blkly, med | MR LST: med-dk gy, sb blkly, med | MR LST: med-dk gy, sb blkly, med | MR LST: med-dk gy, sb blkly, med |
| sf-fm, silty tex, v calc; CHK:it-med gy, | sf-fm, silty tex, v calc; CHK:it-med gy, | sf-fm, silty tex, v calc; CHK:it-med gy, | sf-fm, silty tex, v calc; CHK:it-med gy, | sf-fm, silty tex, v calc; CHK:it-med gy, | sf-fm, silty tex, v calc; CHK:it-med gy, |
| v calc,mod stmg | sb blkly, sft, mot tex, v calc,mod stmg | sb blkly, sft, mot tex, v calc,mod stmg | sb blkly, sft, mot tex, v calc,mod stmg | sb blkly, sft, mot tex, v calc,mod stmg | sb blkly, sft, mot tex, v calc,mod stmg |
| | milky bl cut, dull gn ring | milky bl cut, dull gn ring | milky bl cut, dull gn ring | milky bl cut, dull gn ring | milky bl cut, dull gn ring |





MD: 7,882 '
TVD: 7,390.13 '
Inclination: 90.09 °
Azimuth: 177.3 °
VS: 283.10 '

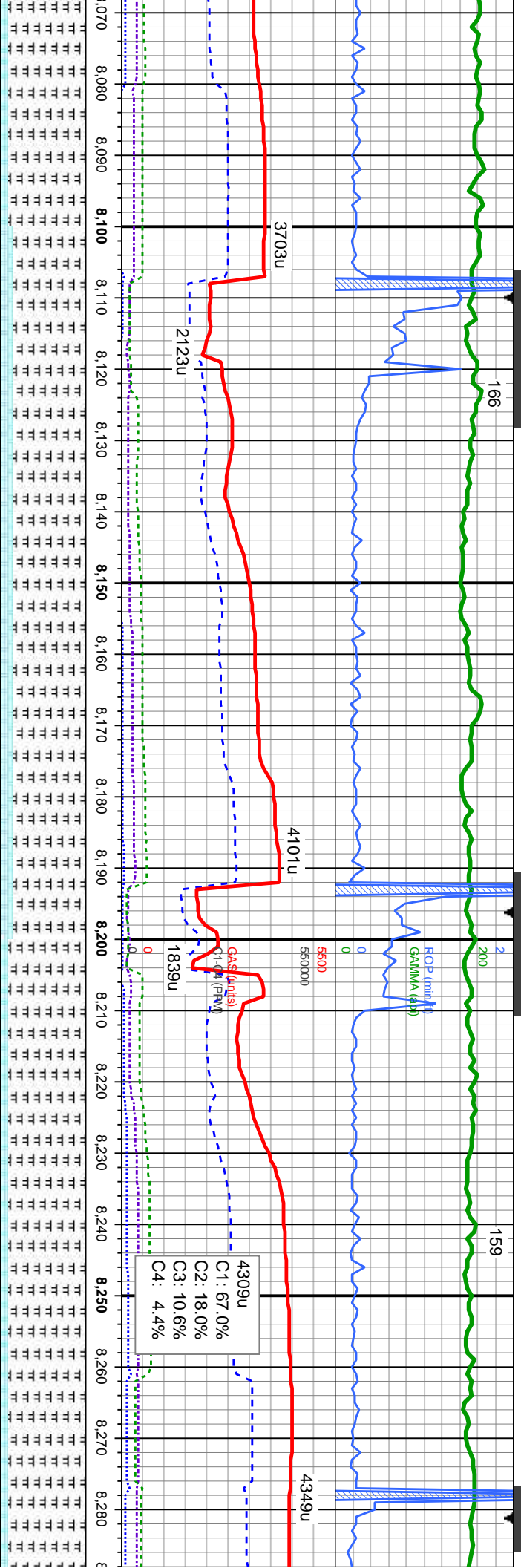
MD: 7,968 '
TVD: 7,389.48 '
Inclination: 90.77 °
Azimuth: 177.77 °
VS: 369.10 '

2174u
C1: 74.5%
C2: 16.3%
C3: 8.1%
C4: 1.1%

7, sb blkly, med sft-frm,
K:lt-med gy, sb blkly, sft,
v stmg milky bl cut, dull

MRLST: med-dk gy, sb blkly, med sft-frm,
sfty tex, v calc; CHK:lt-med gy, sb blkly, sft,
mot tex, v calc;mod stmg milky bl cut, dull
gn ring

MRLST: med-dk gy, sb blkly, med
sft-frm, sfty tex, v calc; CHK:lt-med gy
blkly, sft, mot tex, v calc, tr bent,mod
stmg milky bl cut, dull gn ring

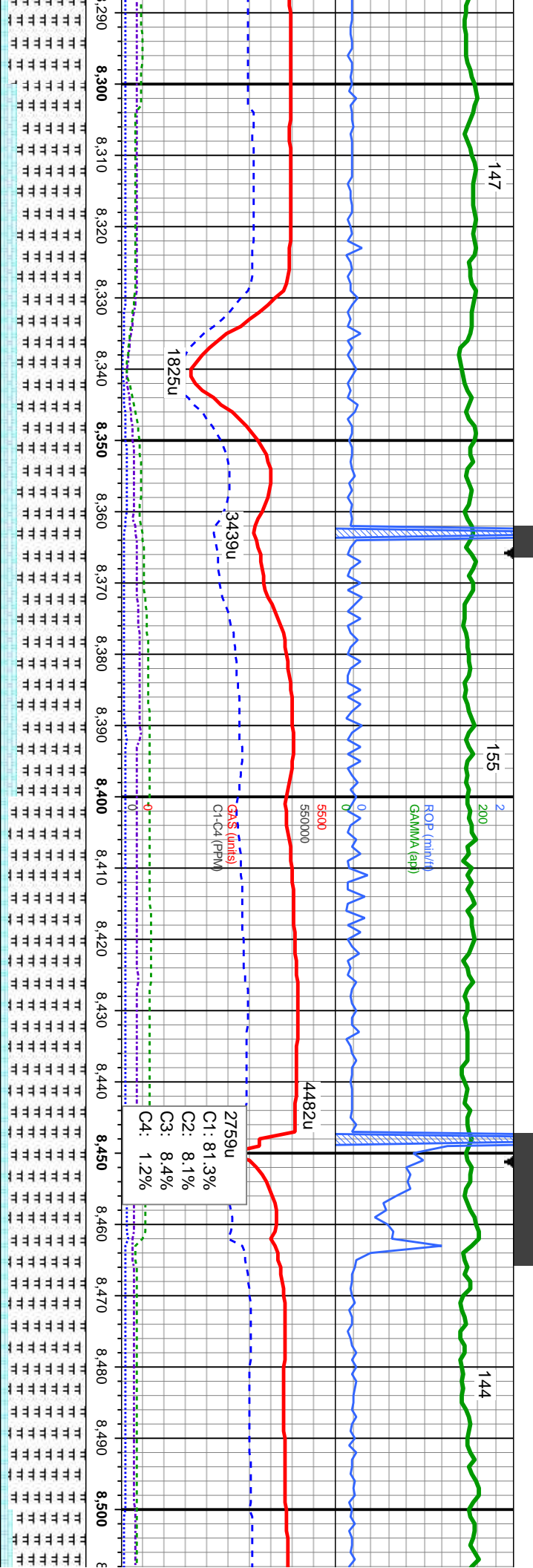


MD: 8,138 '
TVD: 7,388.09 '
Inclination: 90.18 °
Azimuth: 178.17 °
VS: 539.09 '

MRLST: med-dk gy, sb blk, med sft-fm,
silty tex, v calc; CHK:lt-med gy, sb blk,
sft, mot tex, v calc, tr bent,mod stmg
milky bl cut, dull gn ring

MRLST: med-dk gy, sb blk, med
sft-fm, silty tex, v calc; CHK:lt-med gy,
sb blk, sft, mot tex, v calc, tr bent,mod
stmg milky bl cut, dull gn ring



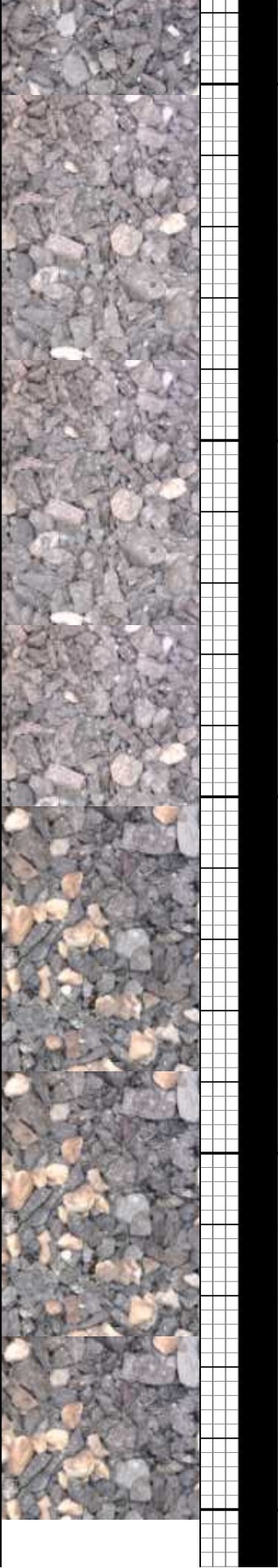


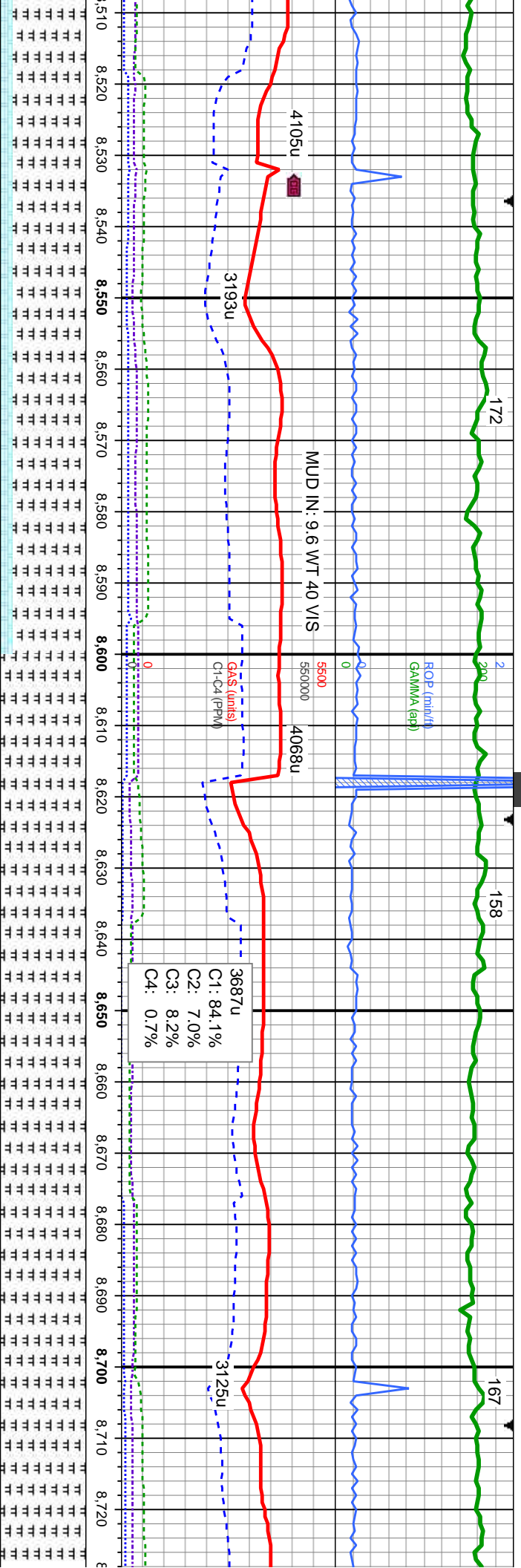
MD: 8,308 '
TVD: 7,388.47 '
Inclination: 89.56 °
Azimuth: 177.88 °
VS: 709.09 '

MD: 8,394 '
TVD: 7388.84 '
Inclination: 89.96 °
Azimuth: 177.75 °
VS: 795.09 '

MRLST: med-dk gy, sb blk, med sft-fm,
sily tex, v calc; CHK:lt-med gy, sb blk, sft,
mot tex, v calc, tr bent,mod sting milky bl
cut, dull gn ring

MRLST: med-dk gy, sb blk, med sft-fm,
sily tex, v calc; CHK:lt-med gy, sb blk, sft,
mot tex, v calc, tr bent,mod sting milky bl
cut,dull gn ring



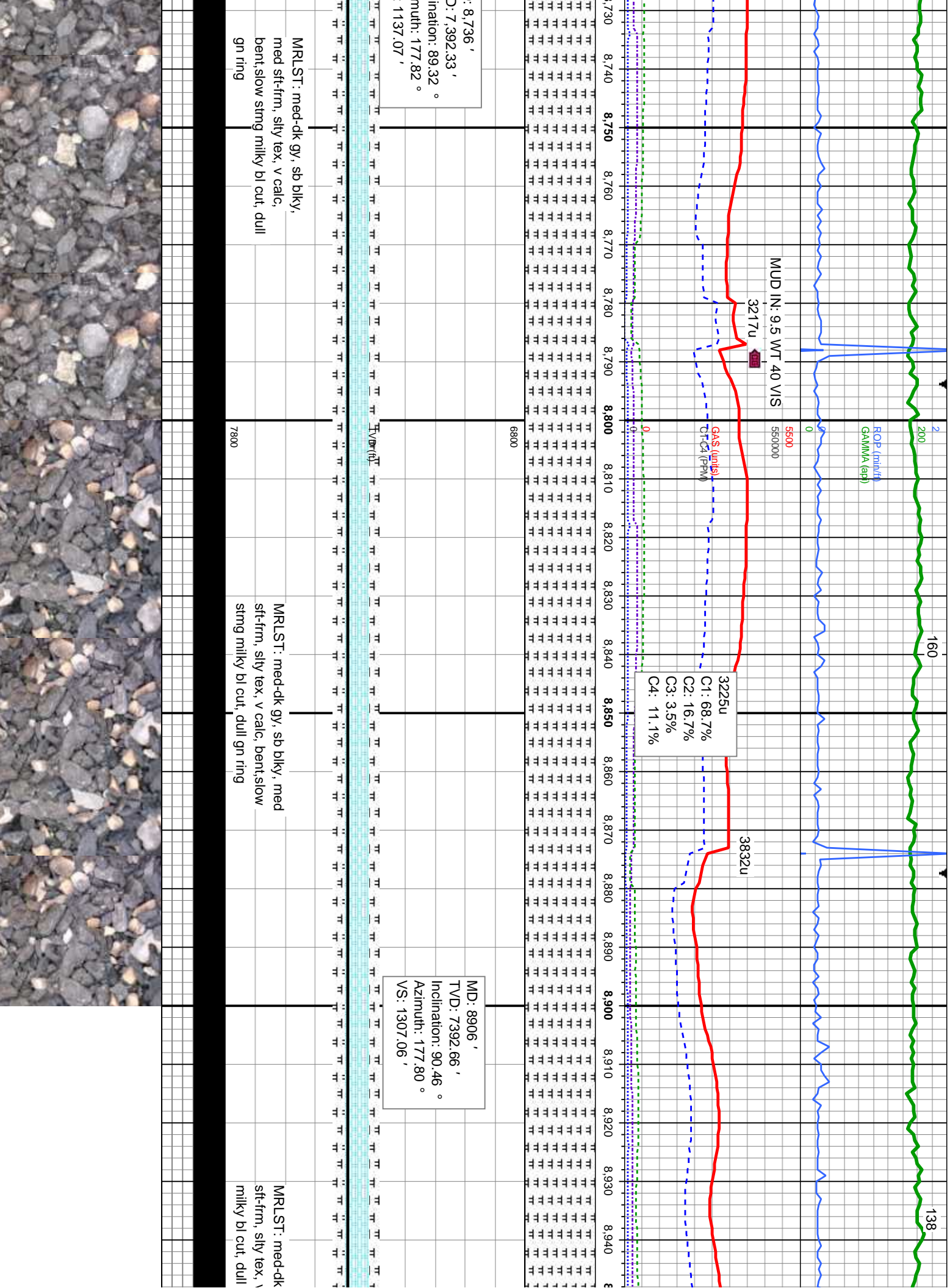


MD: 8,565 '
TVD: 7,390.11 '
Inclination: 89.19 °
Azimuth: 177.76 °
VS: 966.08 '

MR.LST: med-dk gy, sb blkly, med sft-frm,
silty tex, v calc; CHK:it-med gy, sb blkly, sft,
mot tex, v calc, tr bent,mod string milky bl
cut, dull gn ring

MR.LST: med-dk gy, sb blkly, med
sft-frm, silty tex, v calc, bent,slow
string milky bl cut, dull gn ring





02/05/2014

MINDEPTH

200 117

ROP (min/h)
GAMMA (api)

MUD IN: 9.6 WT 40 V/S

5500
550000

3491u

GAS (units)
C1: 76.0%
C2: 16.1%
C3: 7.9%
C4: 2.8%

3838u

2080u

116

6800

MD: 8991 '
TVD: 7392.98 '
Inclination: 89.10 °
Azimuth: 176.73 °
VS: 1392.05 '

MD: 9077 '
TVD: 7393.85 '
Inclination: 89.75 °
Azimuth: 176.81 °
VS: 1478.03 '

MD: 9162 '
TVD: 7394.47 '
Inclination: 89.4 °
Azimuth: 176.96 °
VS: 1563.02 '

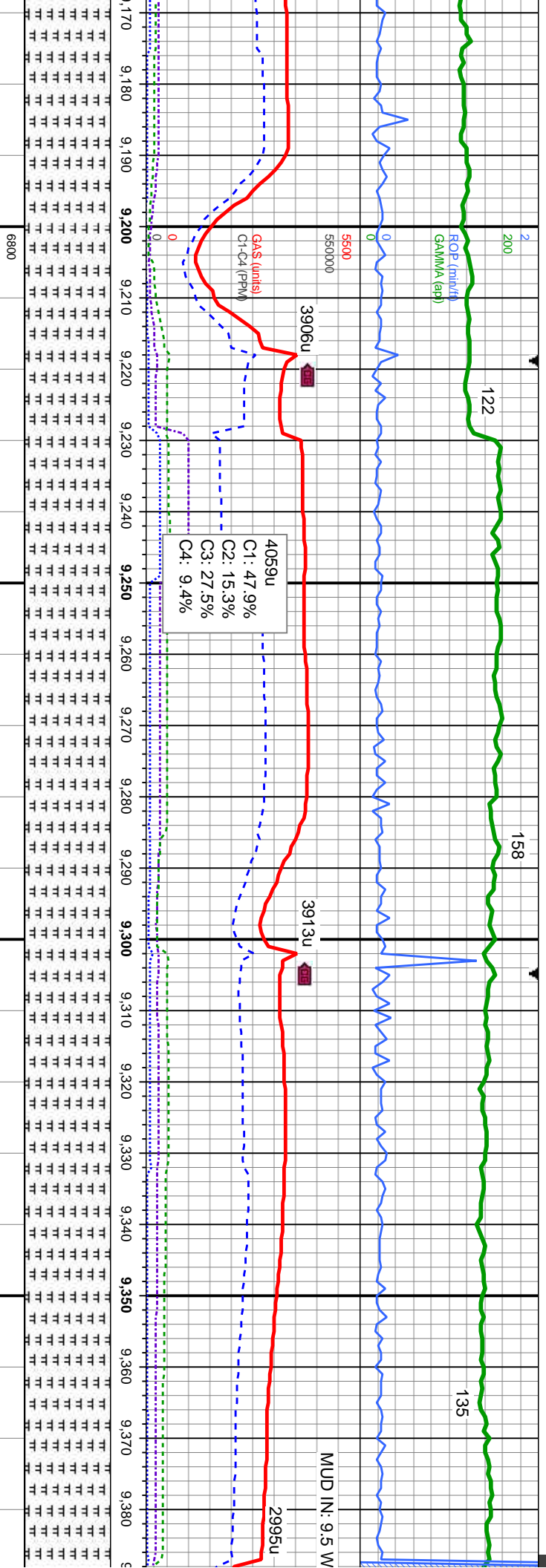
gy, sb blkly, med
/ calc, bent, slow stmg
gn ring

7800

MRLST: med-dk gy, sb blkly, med
sft-firm, silty tex, v calc, tr bent, slow
stmg milky bl cut, dull gn ring

MRLST: med-dk gy, sb blkly, med
sft-firm, silty tex, v calc, tr bent, slow
stmg milky bl cut, dull gn ring





1 °
5 °

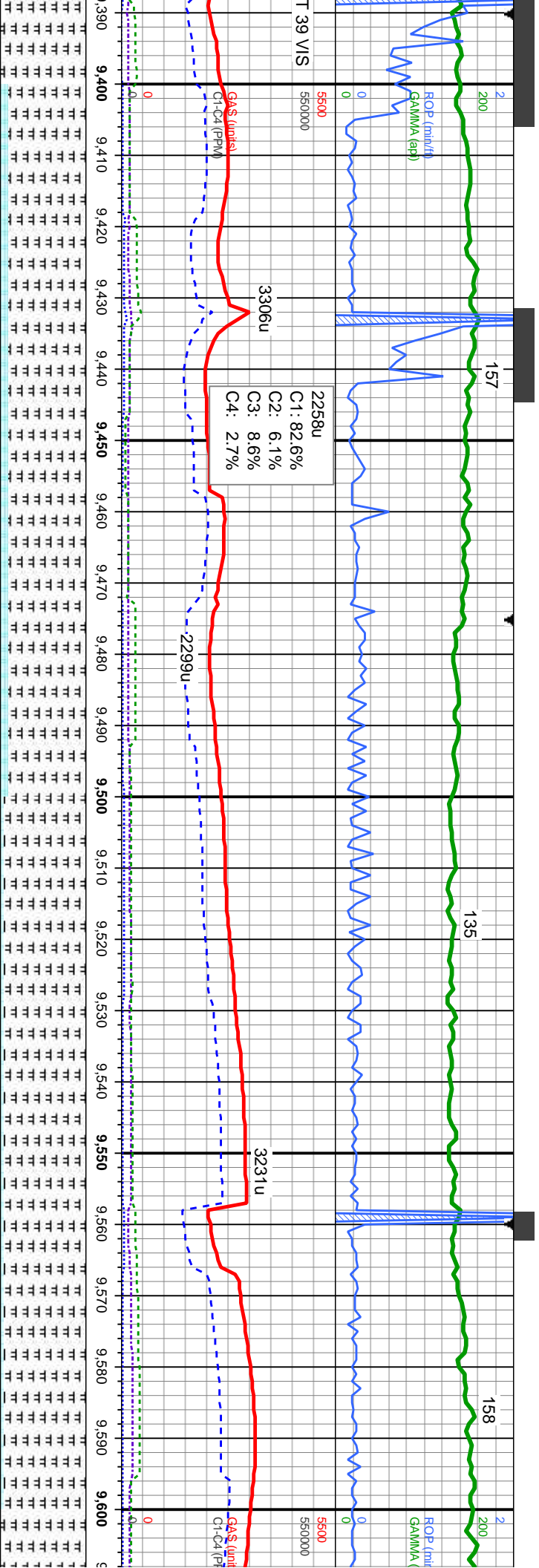
MD: 9247 '
TV/D: 7395.43 '
Inclination: 89.29 °
Azimuth: 176.33 °
VS: 1647.99 '

7800

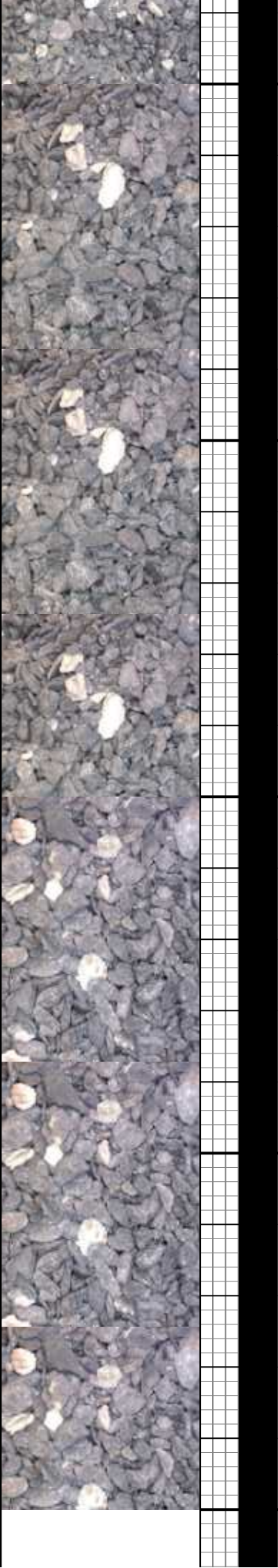
MRSLT: med-dk gy, sb blk, med
sft-fm, silty tex, v calc, tr bent, slow stmg
milky bl cut, dull gn ring

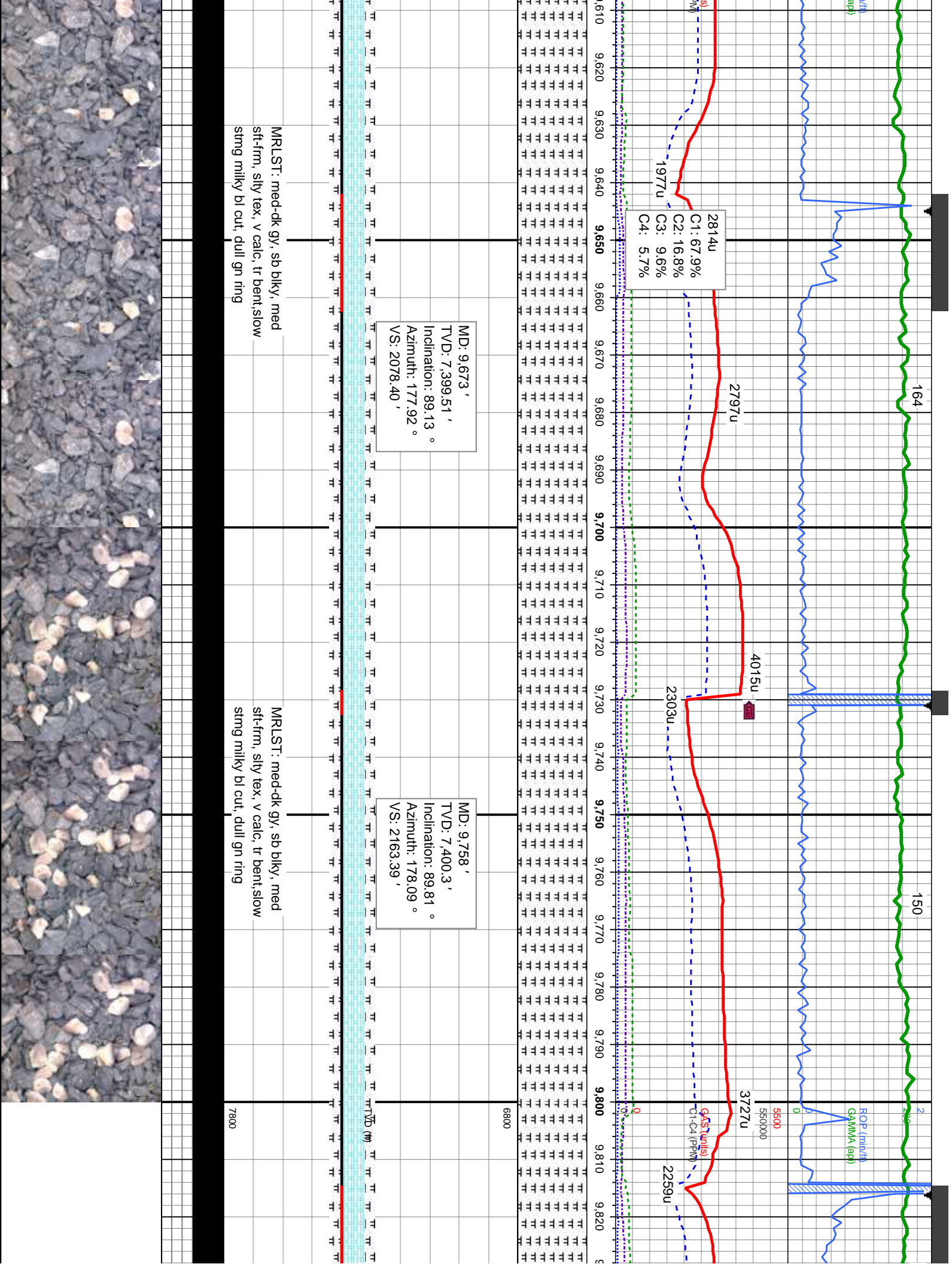
MRSLT: med-dk gy, sb blk, med
sft-fm, silty tex, v calc, tr bent, slow
stmg milky bl cut, dull gn ring

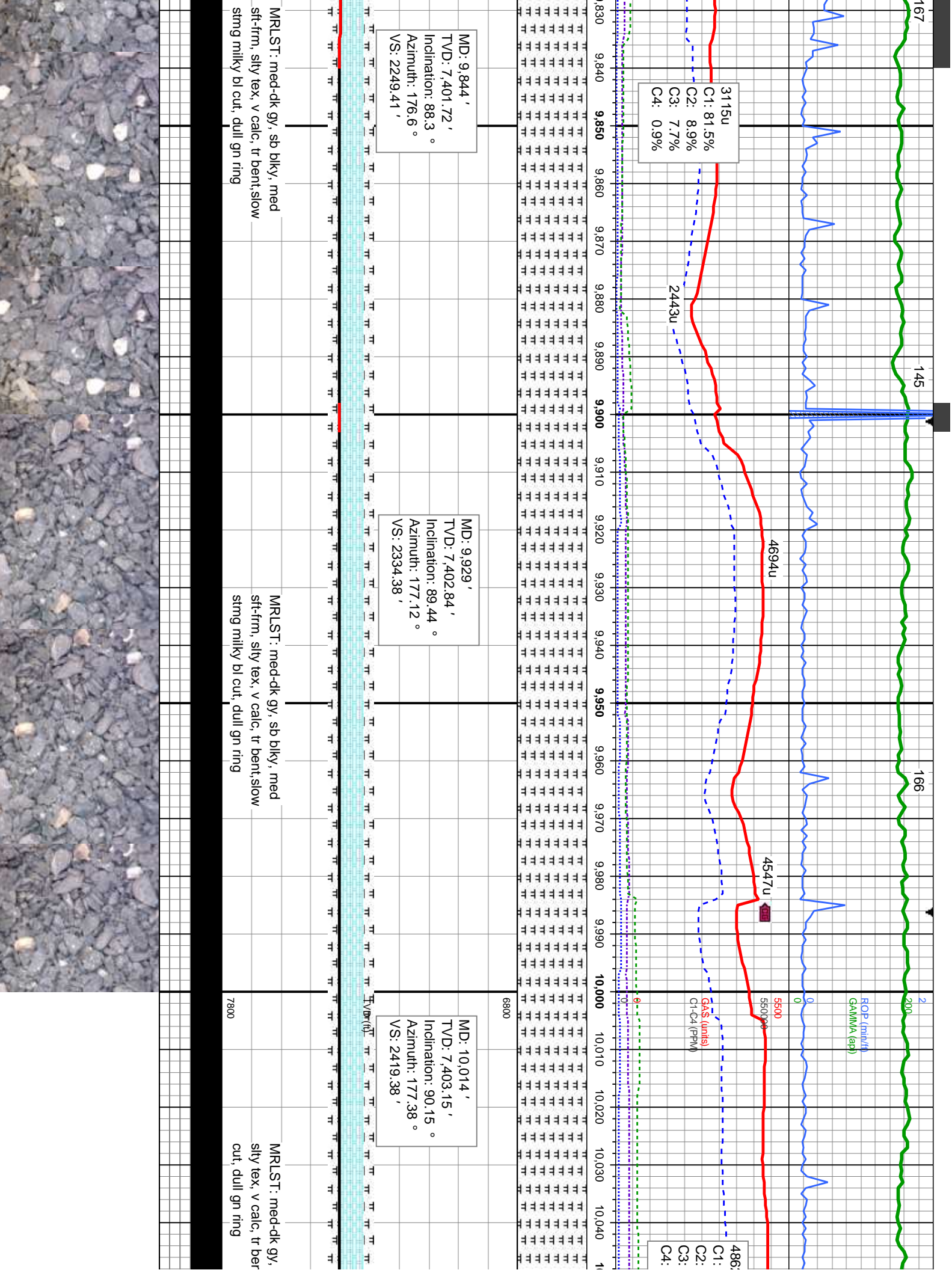


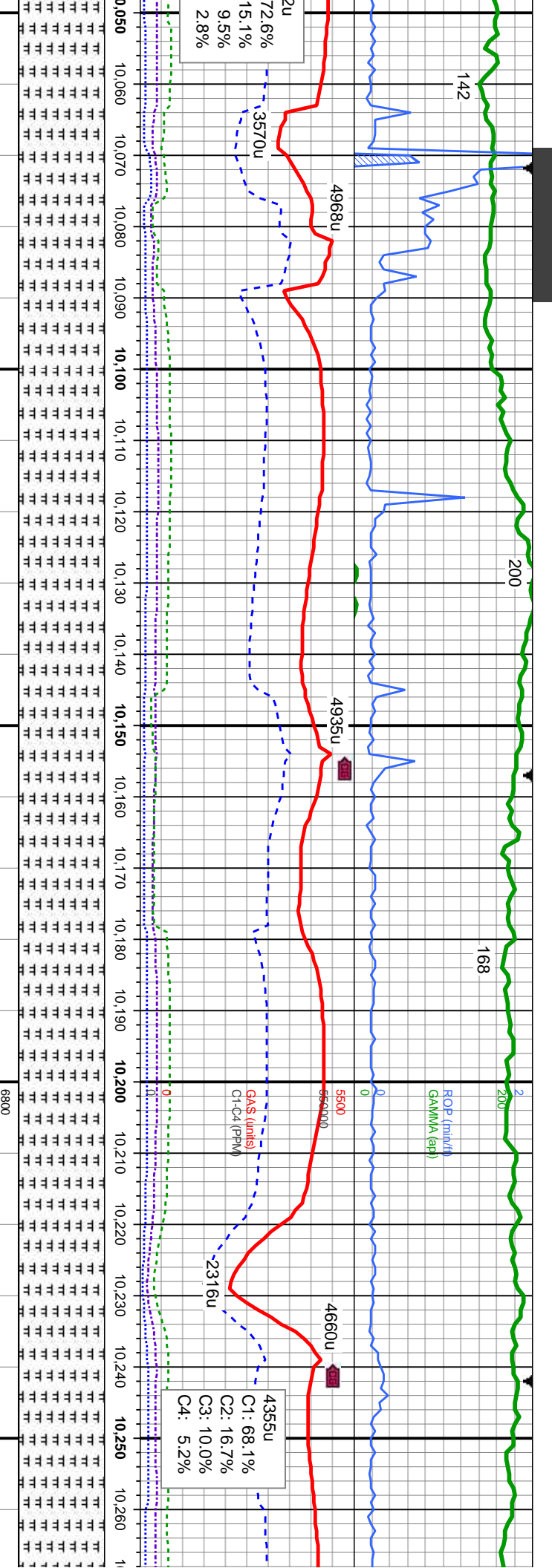


| | | | | |
|------|---|---|--|------|
| 6800 | MD: 9,417 ' TVD: 7,397.63 ' Inclination: 89.59 ° Azimuth: 177.04 ° VS: 1822.42 ' | MD: 9,503 ' TVD: 7,398.45 ' Inclination: 89.32 ° Azimuth: 177.44 ° VS: 1908.41 ' | MD: 9,588 ' TVD: 7,398.91 ' Inclination: 90.06 ° Azimuth: 177.56 ° VS: 1993.40 ' | 6800 |
| 7800 | MRLST: med-dk gy, sb blk, med sft-fr, sily tex, v calc, CHK:lt-med gy, sb blk, sft, mot tex, v calc, tr bent,slow string milky bl cut, dull gn ring | MRLST: med-dk gy, sb blk, med sft-fr, sily tex, v calc, CHK:lt-med gy, sb blk, sft, mot tex, v calc, tr bent,slow string milky bl cut, dull gn ring | | 7800 |









MD: 10,099 '
TVD: 7,403.07 '
Inclination: 89.96 °
Azimuth: 176.46 °
VS: 2504.37 '

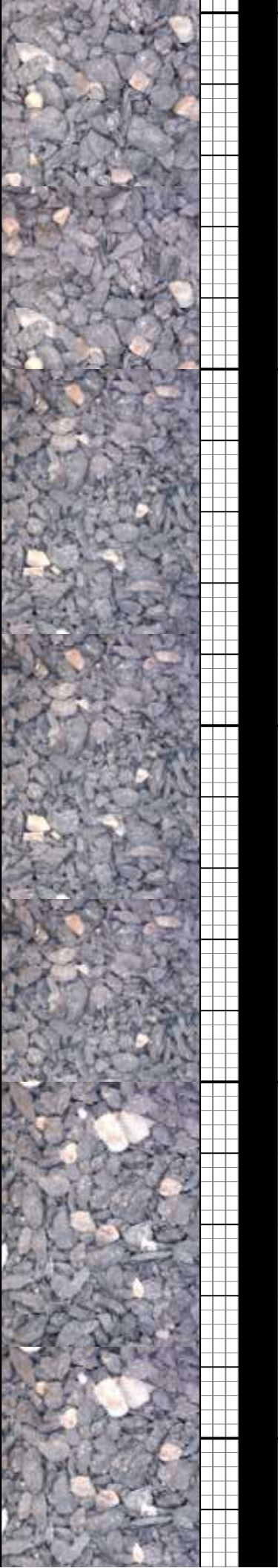
MD: 10,185 '
TVD: 7,402.92 '
Inclination: 90.24 °
Azimuth: 176.22 °
VS: 2590.33 '

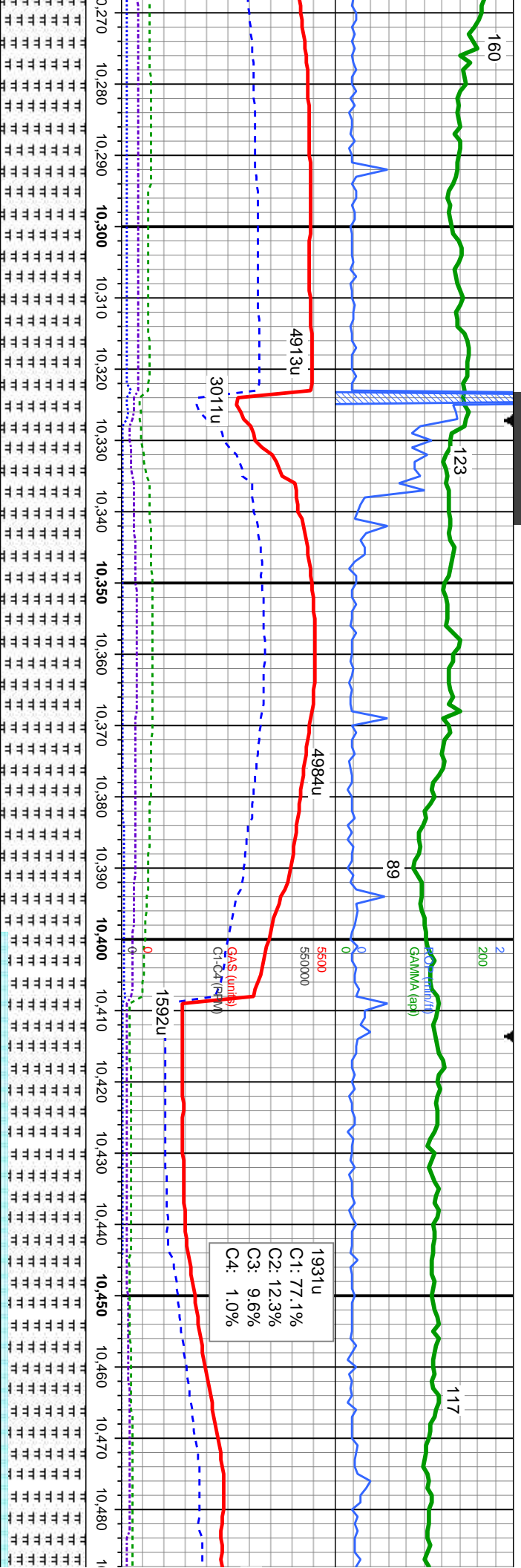
MD: 10,267 '
TVD: 7,402.92 '
Inclination: 90.24 °
Azimuth: 176.22 °
VS: 2590.33 '

msb blkly, med sft-frm,
it,slow string milky bl

MRLST: med-dk gy, sb blkly, med
sft-frm, silty tex, v calc, tr bent,slow
string milky bl cut, dull gn ring

7800





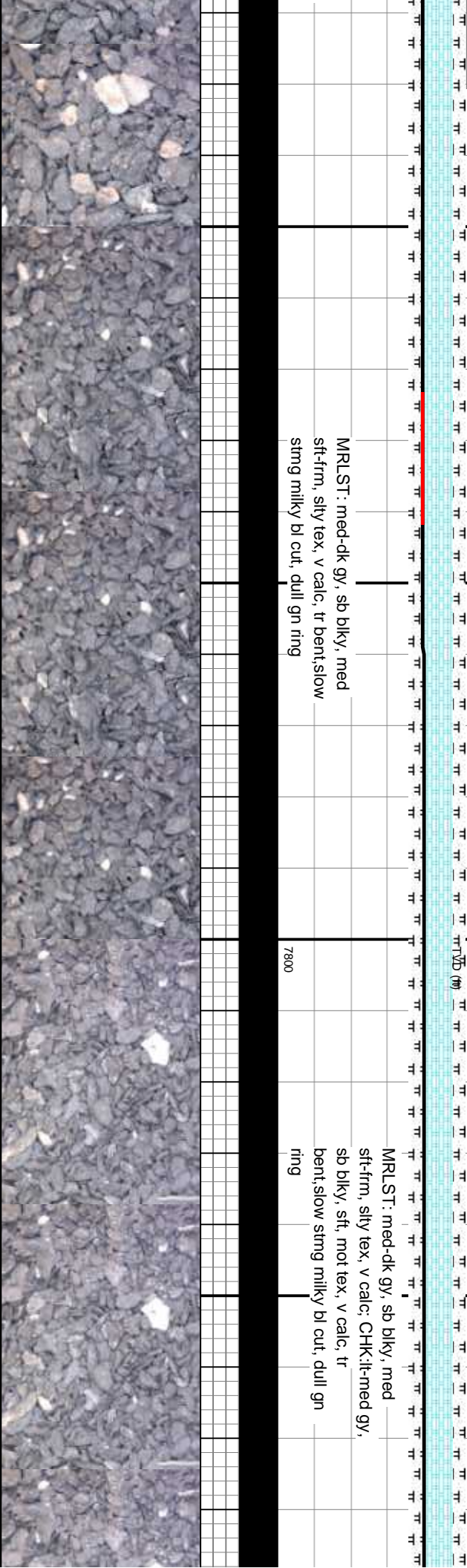
MD: 10,270'
TVD: 7,402.22'
Inclination: 90.7°
Azimuth: 176.35°
VS: 5.30'

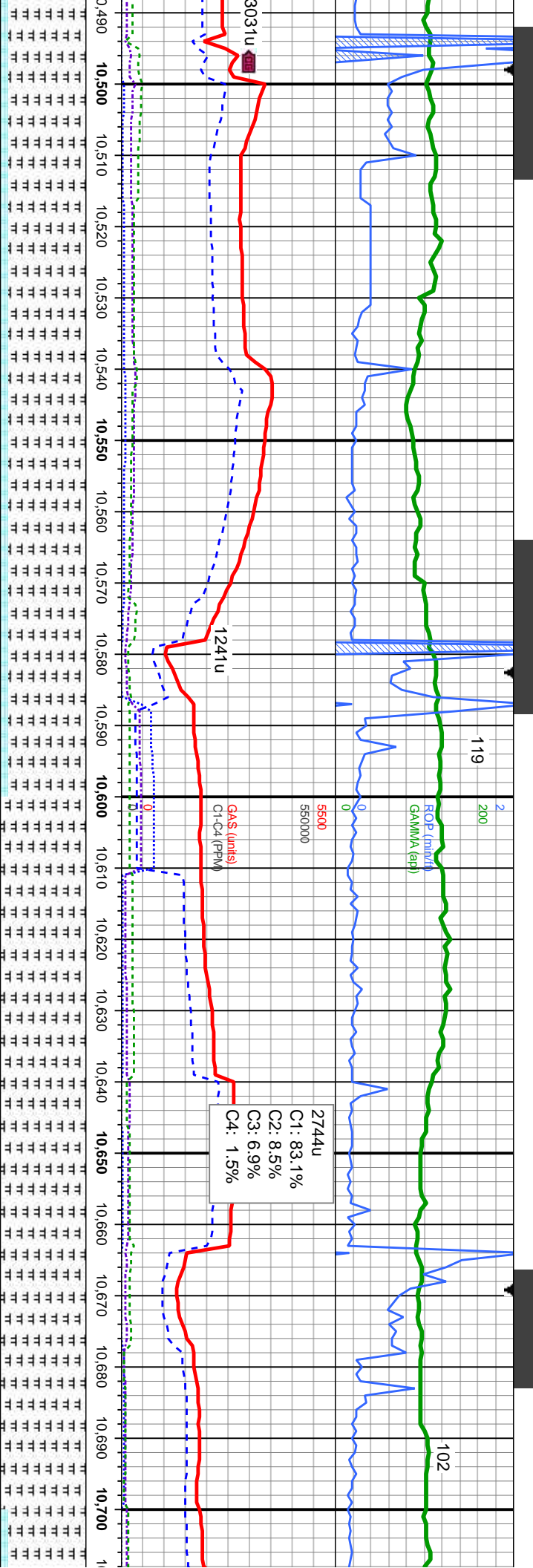
MD: 10,355'
TVD: 7,401.59'
Inclination: 90.15°
Azimuth: 176.21°
VS: 2760.26'

MD: 10,440'
TVD: 7,401.03'
Inclination: 90.61°
Azimuth: 176.35°
VS: 2845.23'

MRLST: med-dk gy, sb blkly, med
sft-firm, silty tex, v calc, tr bent, slow
string milky bl cut, dull gn ring

MRLST: med-dk gy, sb blkly, med
sft-firm, silty tex, v calc, CHK:lt-med gy,
sb blkly, sft, mot tex, v calc, tr
bent, slow string milky bl cut, dull gn
ring





MD: 10,525 '
TVD: 7,400.71 '
Inclination: 89.81 °
Azimuth: 176.31 °
VS: 2930.19 '

MD: 10,611 '
TVD: 7,400.98 '
Inclination: 89.84 °
Azimuth: 175.96 °
VS: 3016.15 '

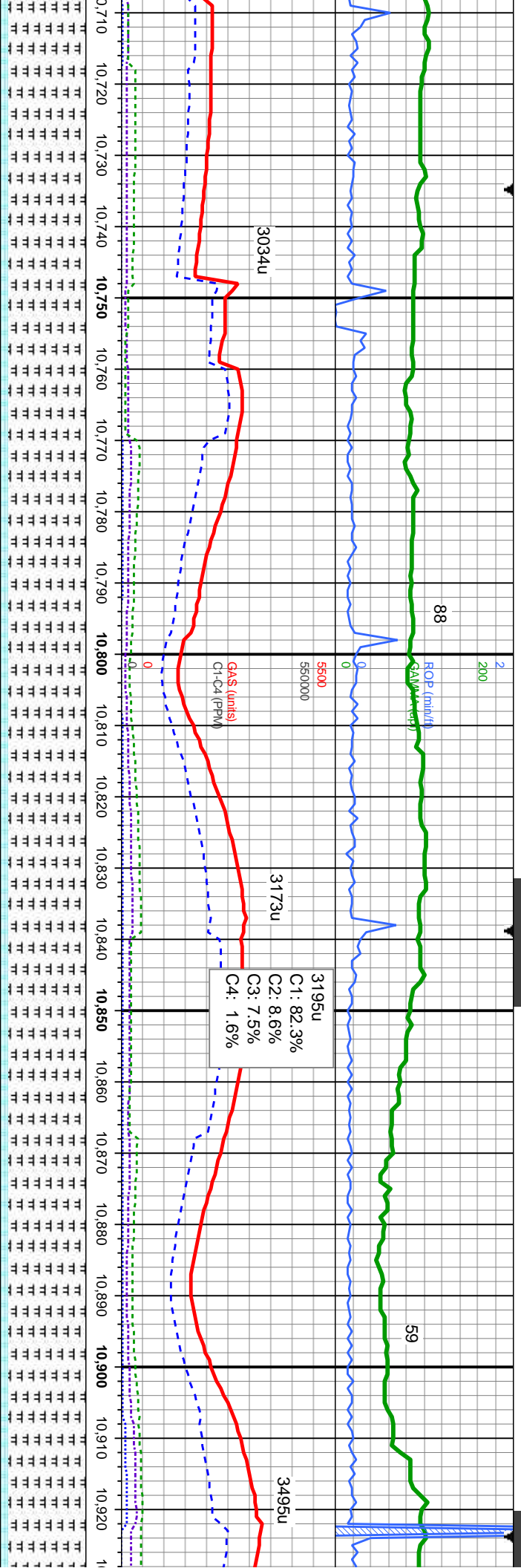
2744u
C1: 83.1%
C2: 8.5%
C3: 6.9%
C4: 1.5%

MD: 10696 '
TVD: 7401.87 '
Inclination: 88.95 °
Azimuth: 175.59 °
VS: 3101.09 '

MRLST: med-dk gy, sb blk, med sft-fm,
sily tex, v calc, CHK-ilt-med gy, sb blk,
sft, mot tex, v calc, tr bent, slow sting
milky bl cut, dull gn ring

MRLST: med-dk gy, sb blk, med
sft-fm, sily tex, v calc, tr bent, slow
sting milky bl cut, dull gn ring



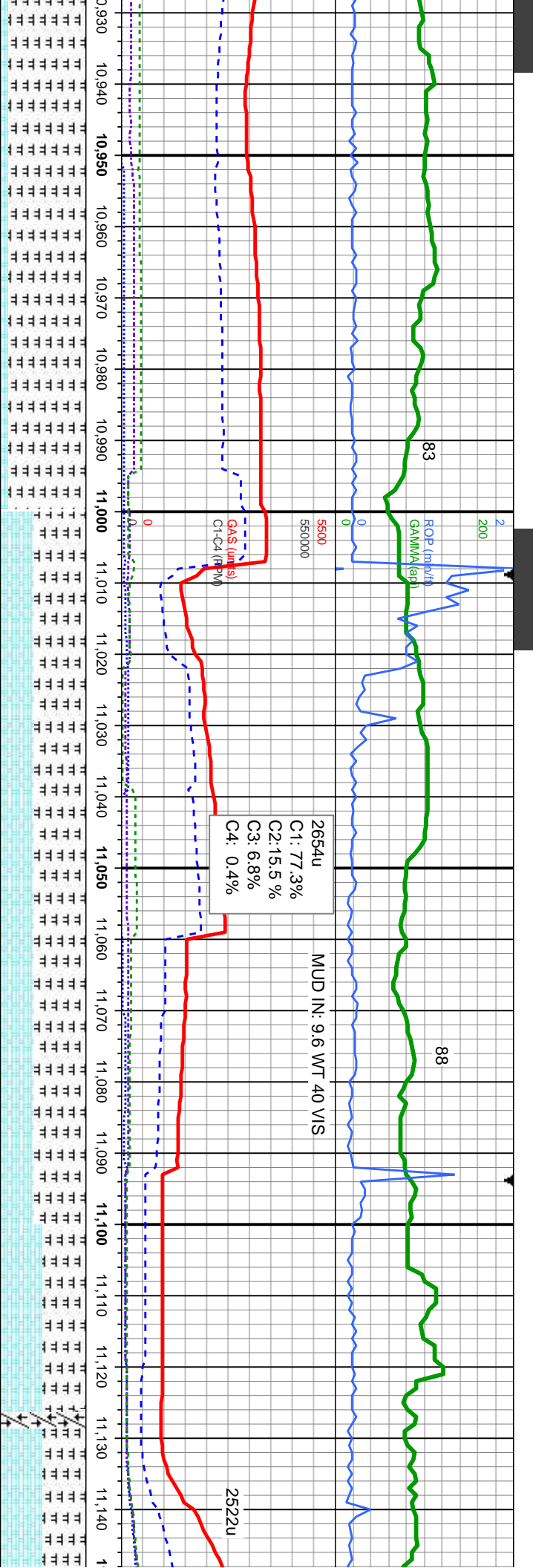


MD: 10866 '
TVD: 7403.89 '
Inclination: 89.69 °
Azimuth: 175.62 °
VS: 3270.94 '

MRLST: med-dk gy, sb blkly, med sft-firm, silty tex, v calc;
CHK:it-med gy, sb blkly, sft, mot tex, v calc, tr bent,slow
string milky bl cut, dull gn ring

MRLST: med-dk gy, sb blkly, med sft-firm, silty tex, v
calc; CHK:it-med gy, sb blkly, sft, mot tex, v calc, tr
bent,slow string milky bl cut, dull gn ring





MD: 10952 '
TVD: 7403.90 '
Inclination: 90.30 °
Azimuth: 175.77 °
VS: 3356.88 '

MD: 11037 '
TVD: 7403.93 '
Inclination: 89.66 °
Azimuth: 175.30 °
VS: 3441.80 '

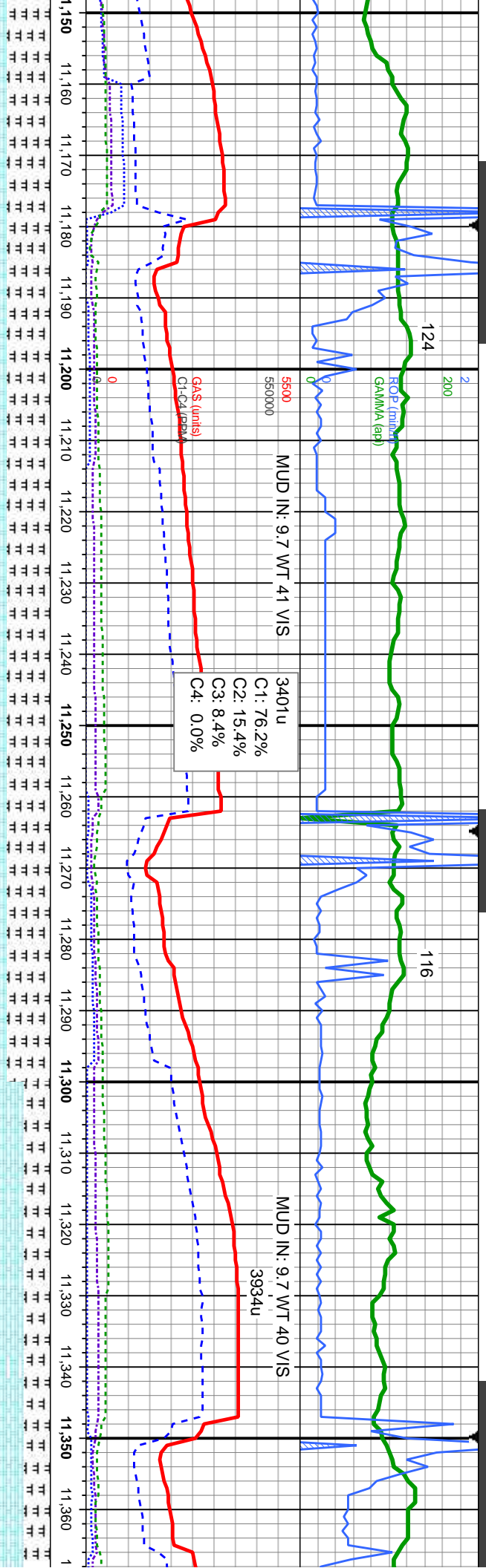
MD: 11122 '
TVD: 7403.88 '
Inclination: 90.40 °
Azimuth: 175.23 °
VS: 3526.71 '

MRSLT: med-dk gy, sb blk, med sft-fm, silty
tex, v calc; CHK:lt-med gy, sb blk, sft, mot
tex,slow string milky bl cut, dull gn ring

MRSLT: med-dk gy, sb blk, med sft-fm, silty
tex, v calc; CHK:lt-med gy, sb blk, sft, mot
tex,fast string milky bl cut, bri bl ring

MRSLT: med-dk gy, s
tex, v calc; CHK:lt-me
tex,fast string milky bl





MD: 11207 '
TVD: 7403.73 '
Inclination: 89.81 °
Azimuth: 175.28 °
VS: 3611.62 '

MD: 11293 '
TVD: 7404.04 '
Inclination: 89.78 °
Azimuth: 175.77 °
VS: 3697.55 '

b blkly, med sft-firm, silty
d gy, sb blkly, sft, mot
cut, bri bl ring
MRLST: med-dk gy, sb blkly, med sft-firm, silty tex, v
calc: CHK:lt-med gy, sb blkly, sft, mot tex,fast stng
milky bl cut, bri bl ring
7800
CHK:lt-med gy, sb blkly, tr sb pily, sft, mo
calc: MRLST: med-dk gy, sb blkly, med s
silty tex, v calc,fast stng milky bl cut, bri

02/06/2014

MINDEPTH

130

100

97

GAMMA (api)

3890u

MUD IN: 9.7 WT 42 VIS

MUD IN: 9.7 WT 40 VIS

4883u

4903u

GAS (units)

C1: 67.2%
C2: 16.7%
C3: 10.8%
C4: 4.6%

Cl-C4 (PPM)

4296u

6800

MD: 11378 '
TVD: 7404.59 '
Inclination: 89.47 °
Azimuth: 176.87 °
VS: 3782.52 '

MD: 11463 '
TVD: 7405.38 '
Inclination: 89.47 °
Azimuth: 178.04 °
VS: 3867.51 '

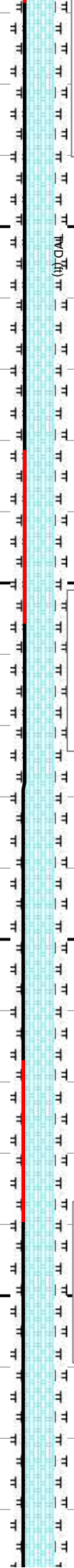
MD: 11549 '
TVD: 7405.87 '
Inclination: 89.87 °
Azimuth: 179.58 °
VS: 3953.49 '

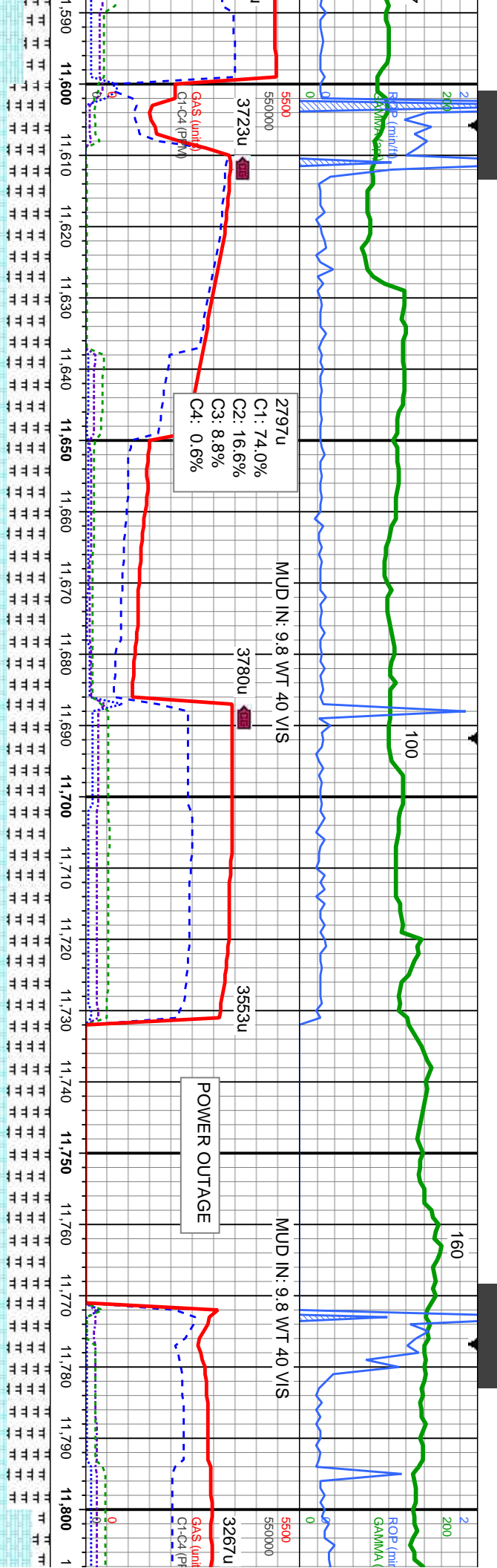
st tex, v
ft-firm,
bl ring

CHK:lt-med gy, sb blk, tr sb pty, sft, mot tex, v
calc; MRLST: med-dk gy, sb blk, med sft-firm,
sily tex, v calc;fast stmg milky bl cut, bri bl ring

CHK:lt-med gy, sb blk, tr sb pty, sft, mot tex, v
calc; MRLST: med-dk gy, sb blk, med sft-firm,
sily tex, v calc;fast stmg milky bl cut, bri bl ring

7800





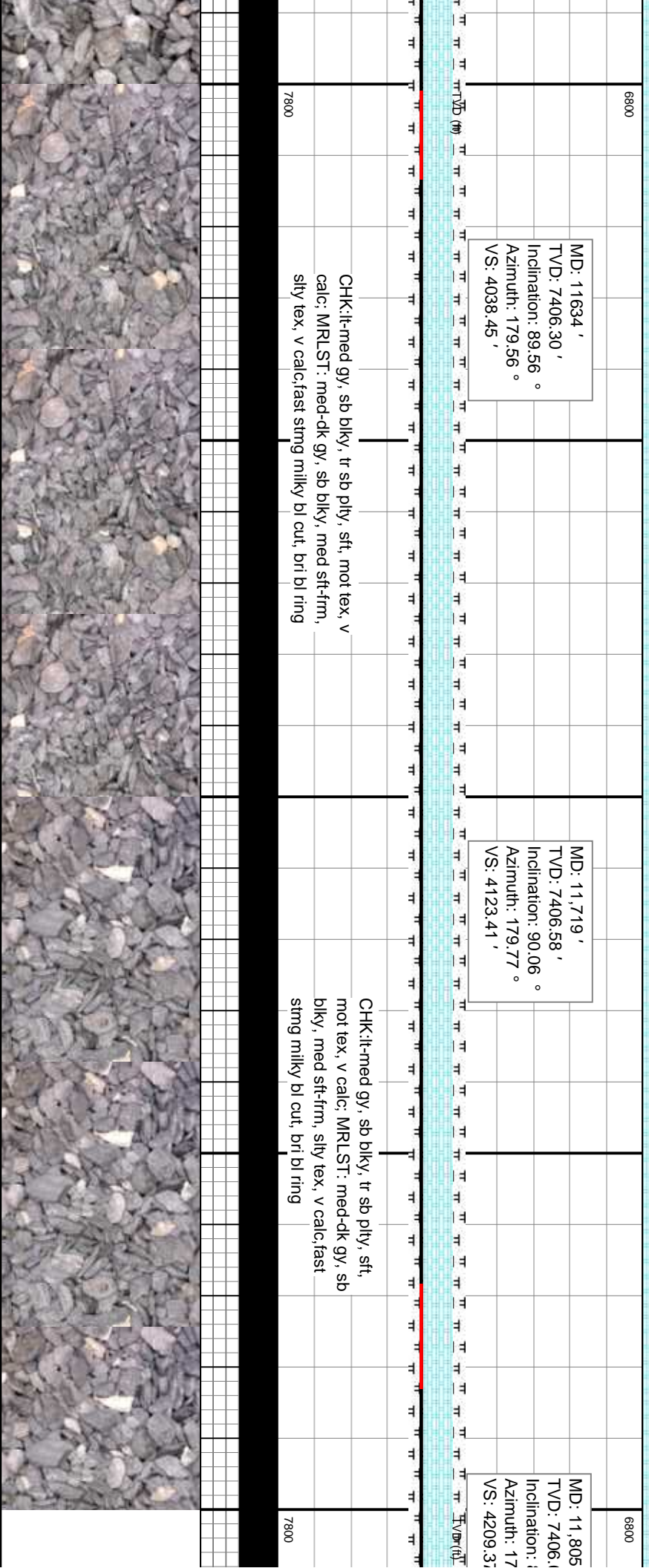
MD: 11,634 '
TVD: 7406.30 '
Inclination: 89.56 °
Azimuth: 179.56 °
VS: 4038.45 '

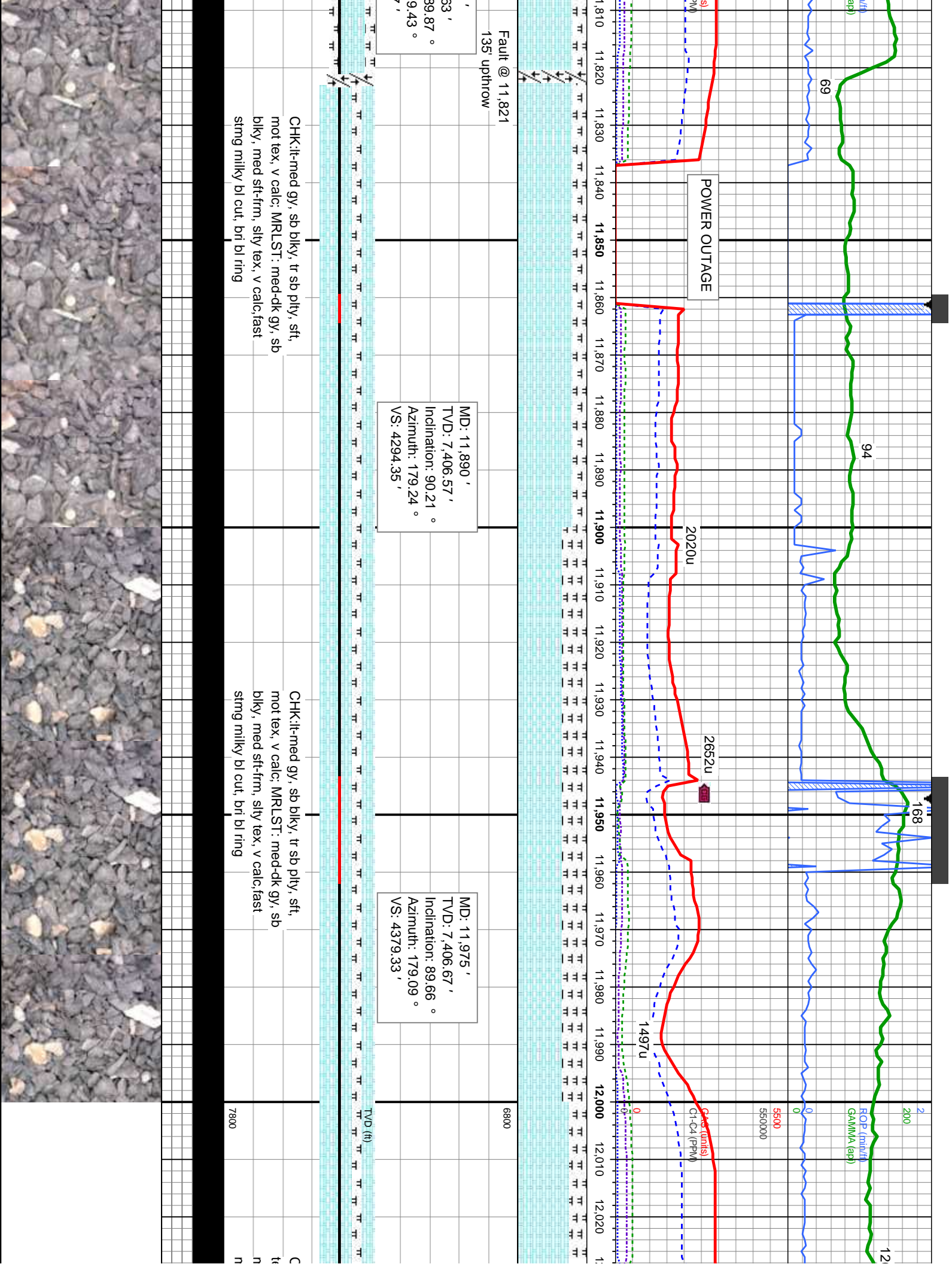
MD: 11,719 '
TVD: 7406.58 '
Inclination: 90.06 °
Azimuth: 179.77 °
VS: 4123.41 '

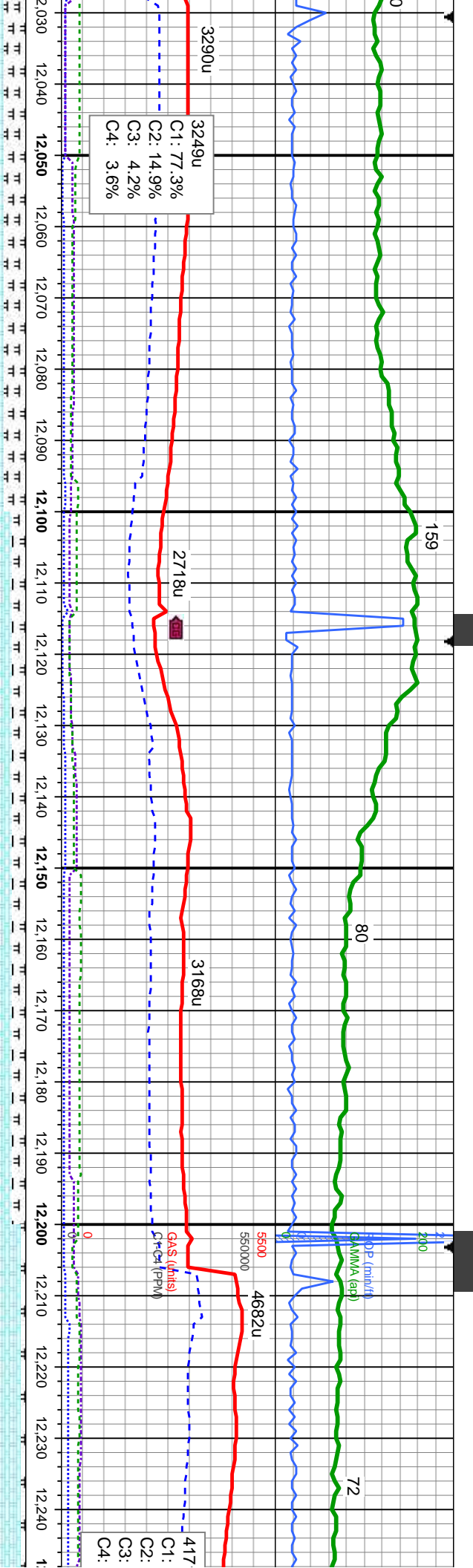
MD: 11,805 '
TVD: 7406.1 '
Inclination: :
Azimuth: 17
VS: 4209.3'

CHK:lt-med gy, sb blk, tr sb ply, sft, mot tex, v
calc: MRLST: med-dk gy, sb blk, med sft-fm,
sly tex, v calc,fast string milky bl cut, bri bl ring

CHK:lt-med gy, sb blk, tr sb ply, sft,
mot tex, v calc, MRLST: med-dk gy, sb
blk, med sft-fm, sly tex, v calc,fast
string milky bl cut, bri bl ring







MD: 12,060 '
TVD: 7,407.23 '
Inclination: 89.59 °
Azimuth: 178.76 °
VS: 4464.31 '

MD: 12,146 '
TVD: 7,407.91 '
Inclination: 89.5 °
Azimuth: 178.82 °
VS: 4550.30 '

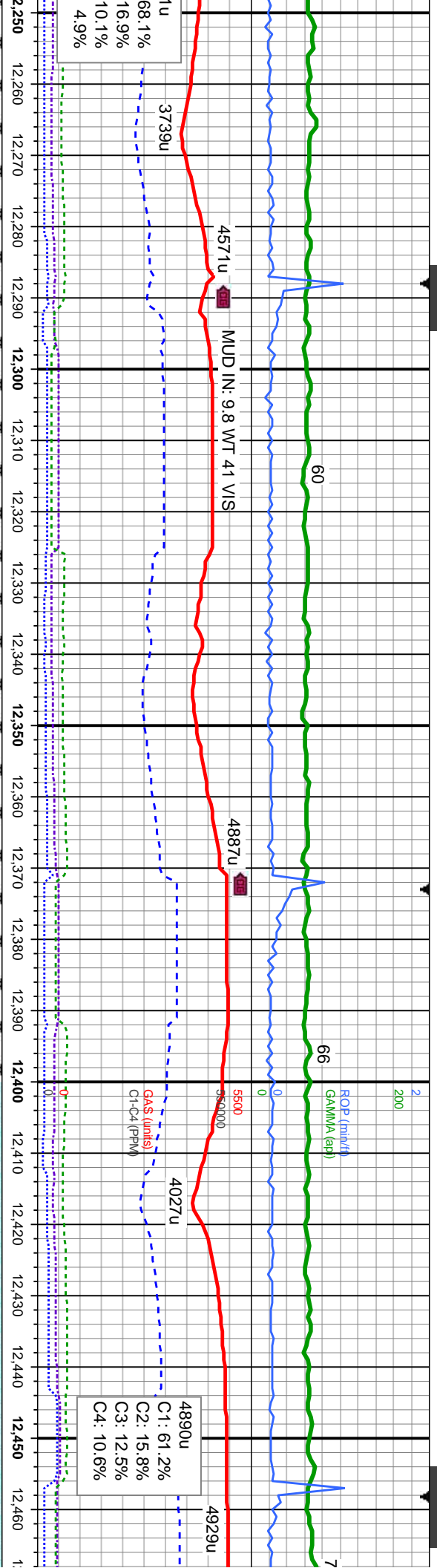
MD: 12,231 '
TVD: 7,408.56 '
Inclination: 89.62 °
Azimuth: 178.54 °
VS: 4635.29 '

CHK:lt-med gy, sb blkly, tr sb ply, sft, mot
ex, v calc; MRLST: med-dk gy, sb blkly,
ed sft-frn, silty tex, v calc;fast stmg
milky bl cut, bri bl ring

CHK:lt-med gy, sb blkly, tr sb ply, sft,
mot tex, v calc; MRLST: med-dk gy, sb
blkly, med sft-frn, silty tex, v calc;fast
stmg milky bl cut, bri bl ring

CHK:lt-med gy, sb
mot tex, v calc; MRLST: med sft-frn
sb blkly, med sft-frn
calc;fast stmg milk





MD: 12,316 '
TVD: 7,409.05 '
Inclination: 89.72 °
Azimuth: 178.77 °
VS: 4720.28 '

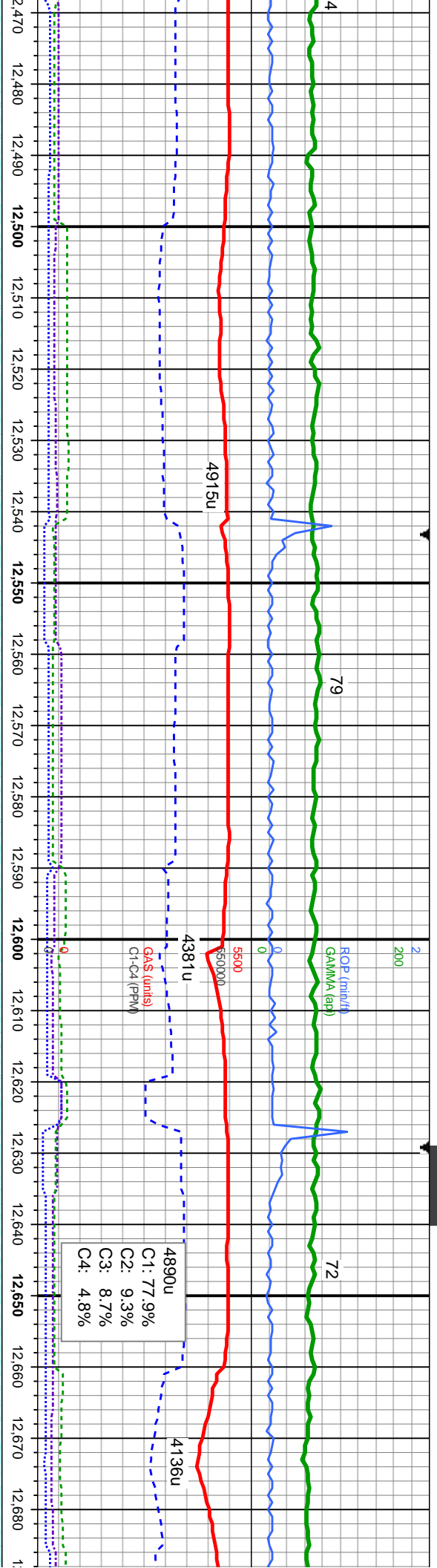
MD: 12,401 '
TVD: 7,409.26 '
Inclination: 90 °
Azimuth: 179.12 °
VS: 4805.26 '

blky, tr sb ply, sft,
RLST: med-dk gy,
n, stly tex, v
y bl cut, bri bl ring

CHK:lt-med gy, sb blky, tr sb ply, sft,
mot tex, v calc, MRLST: med-dk gy, sb
blky, med sft-frn, stly tex, v calc,fast
stmg milky bl cut, bri bl ring

CHK:lt-med gy, sb blky, tr
sb ply, sft, mot tex, v
calc,fast stmg milky bl cut,
bri bl ring





MD: 12,486 '
TVD: 7,409.21 '
Inclination: 90.06 °
Azimuth: 179.1 °
VS: 4890.24 '

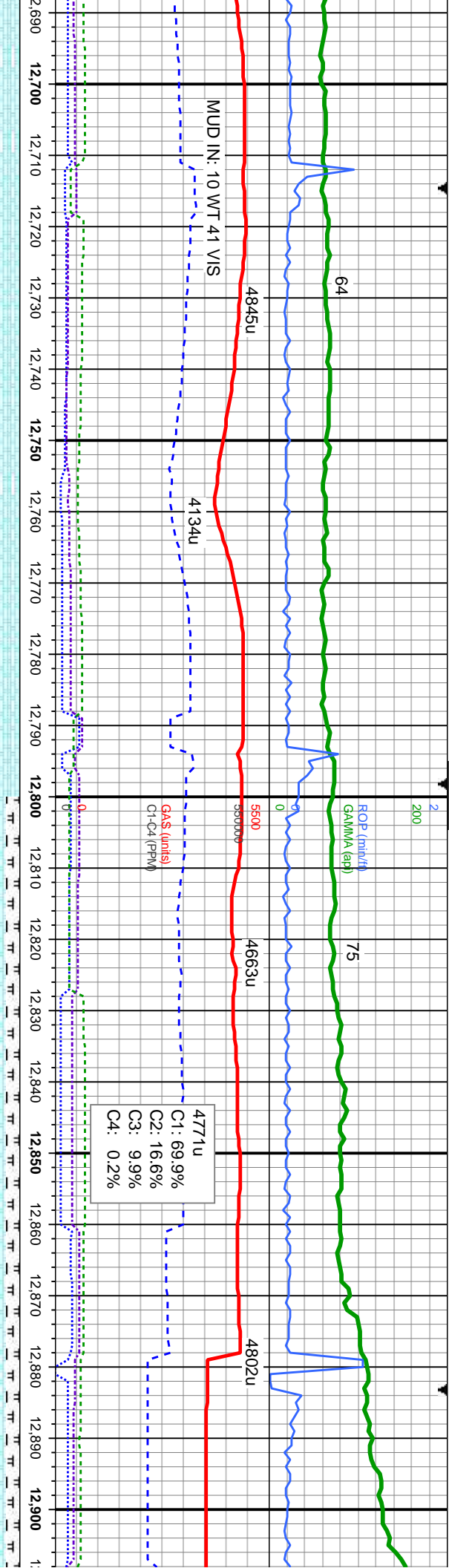
MD: 12,572 '
TVD: 7,409.45 '
Inclination: 89.63 °
Azimuth: 178.68 °
VS: 4976.23 '

MD: 12,656 '
TVD: 7,410.15 '
Inclination: 89.41 °
Azimuth: 178.7 °
VS: 5060.22 '

CHK:it-med gy, sb blkly, tr
sb plty, sft, mot tex, v
calc,fast string milky bl cut,
brl bl ring

CHK:it-med gy, sb blkly, tr
sb plty, sft, mot tex, v
calc,fast string milky bl cut,
brl bl ring





MD: 12,740 '
TVD: 7,410.66 '
Inclination: 89.9 °
Azimuth: 178.7 °
VS: 5144.21 '

CHK:lt-med gy, sb blk, tr
sb pty, sft, mot tex, v
calc,fast stmg milky bl cut,
brl bl ring

CHK:lt-med gy, sb blk, tr sb pty, sft,
mot tex, v calc; MRLST: med-dk gy, sb
blk, med sft-fm, silty tex, v calc,fast
stmg milky bl cut, brl bl ring



