

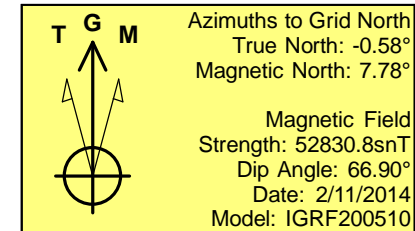
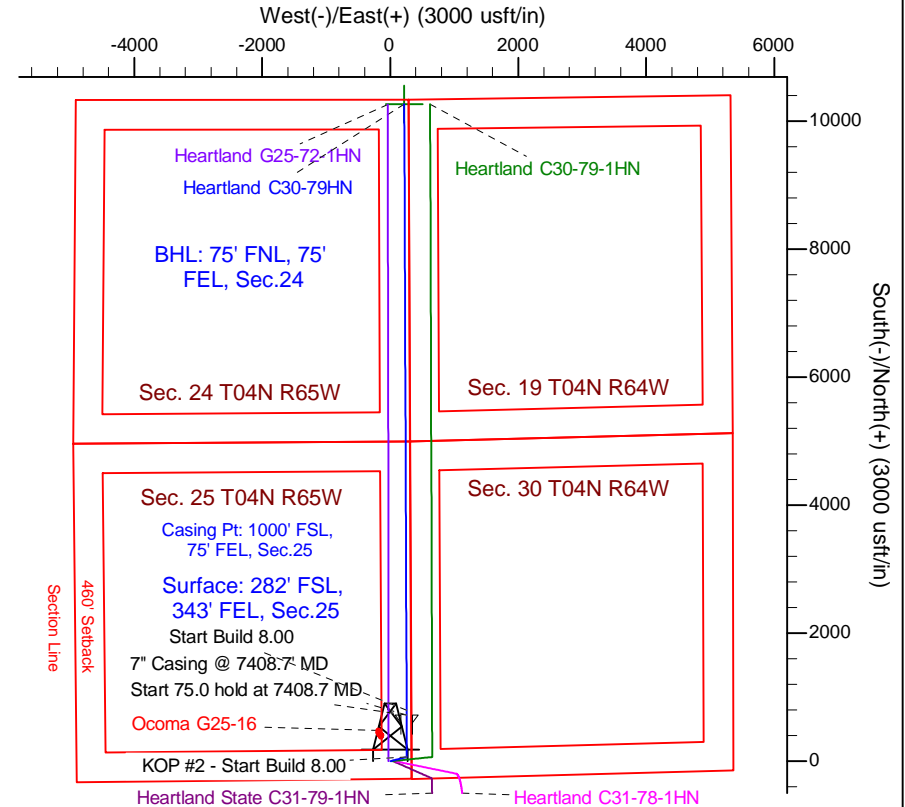
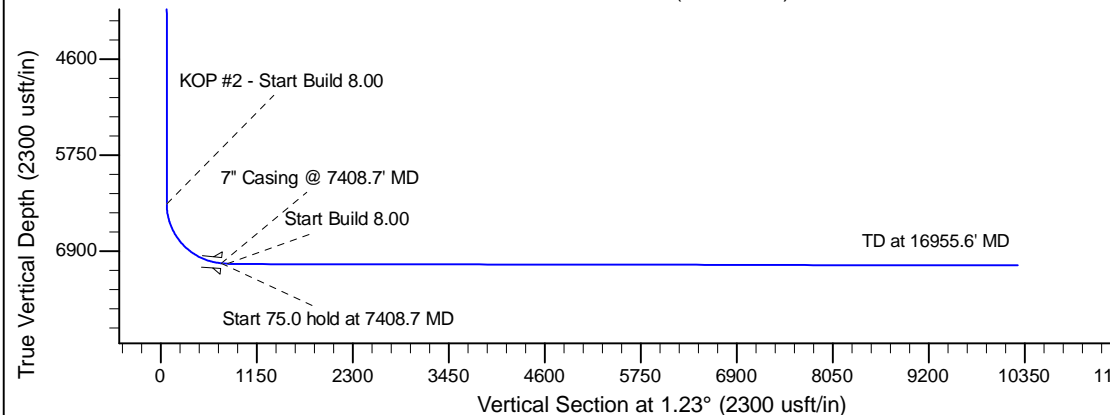
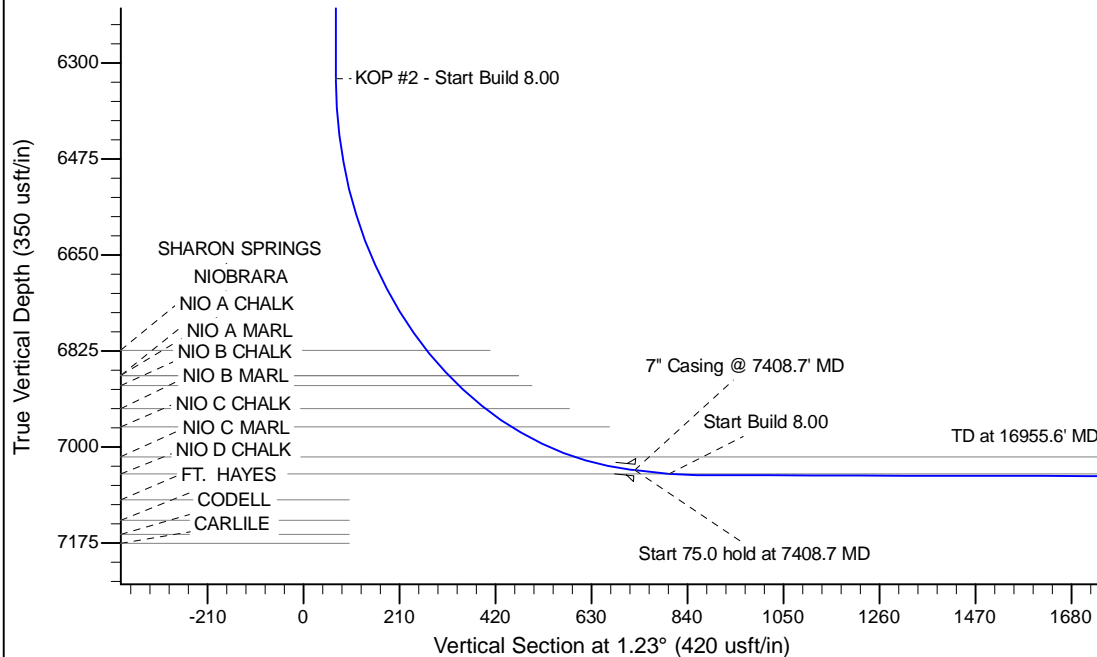
Project: Wattenberg Field
 Site: G (Sec.25-T04N-R65W) Weld County, CO
 Well: Heartland C30-79HN
 Wellbore: Wellbore #1
 Design: APD - Rev 0

Northern Region Drilling - Working

Geodetic System: US State Plane 1983
 Datum: North American Datum 1983
 Ellipsoid: GRS 1980
 Zone: Colorado Northern Zone
 System Datum: Mean Sea Level

SECTION DETAILS

Sec	MD	Inc	Azi	TVD	+N/-S	+E/-W	Dleg	TFace	VSect	Target
1	0.0	0.00	0.00	0.0	0.0	0.0	0.00	0.00	0.0	
2	1800.0	0.00	0.00	1800.0	0.0	0.0	0.00	0.00	0.0	
3	2200.7	8.01	75.96	2199.4	6.8	27.1	2.00	75.96	7.4	
4	3721.8	8.01	75.96	3705.6	58.2	232.9	0.00	0.00	63.2	
5	4122.5	0.00	0.00	4105.0	65.0	260.0	2.00	180.00	70.6	
6	6346.2	0.00	0.00	6328.7	65.0	260.0	0.00	0.00	70.6	
7	7408.7	85.00	359.77	7042.2	718.8	257.4	8.00	359.77	724.1	
8	7483.7	85.00	359.77	7048.8	793.5	257.1	0.00	0.00	798.8	
9	7545.0	89.90	359.77	7051.5	854.7	256.9	8.00	0.00	860.0	
10	16955.6	89.90	359.77	7067.9	10265.2	219.8	0.00	0.00	10267.6	Heartland C30-79HN BHL 75'FNL, 75'FEL



WELL DETAILS: Heartland C30-79HN				
Ground Level: 4844.0				
0.0	0.0	Northing 1344918.35	Easting 3250117.53	Latitude 40.276730
				Longitude -104.603560
Plan: APD - Rev 0 (Heartland C30-79HN/Wellbore #1)				
Created By: Shailey Jewell			Date: 9:17, February 12 2014	
OK to submit with 2A as per Noble Drilling 2/12/2014 10:47				