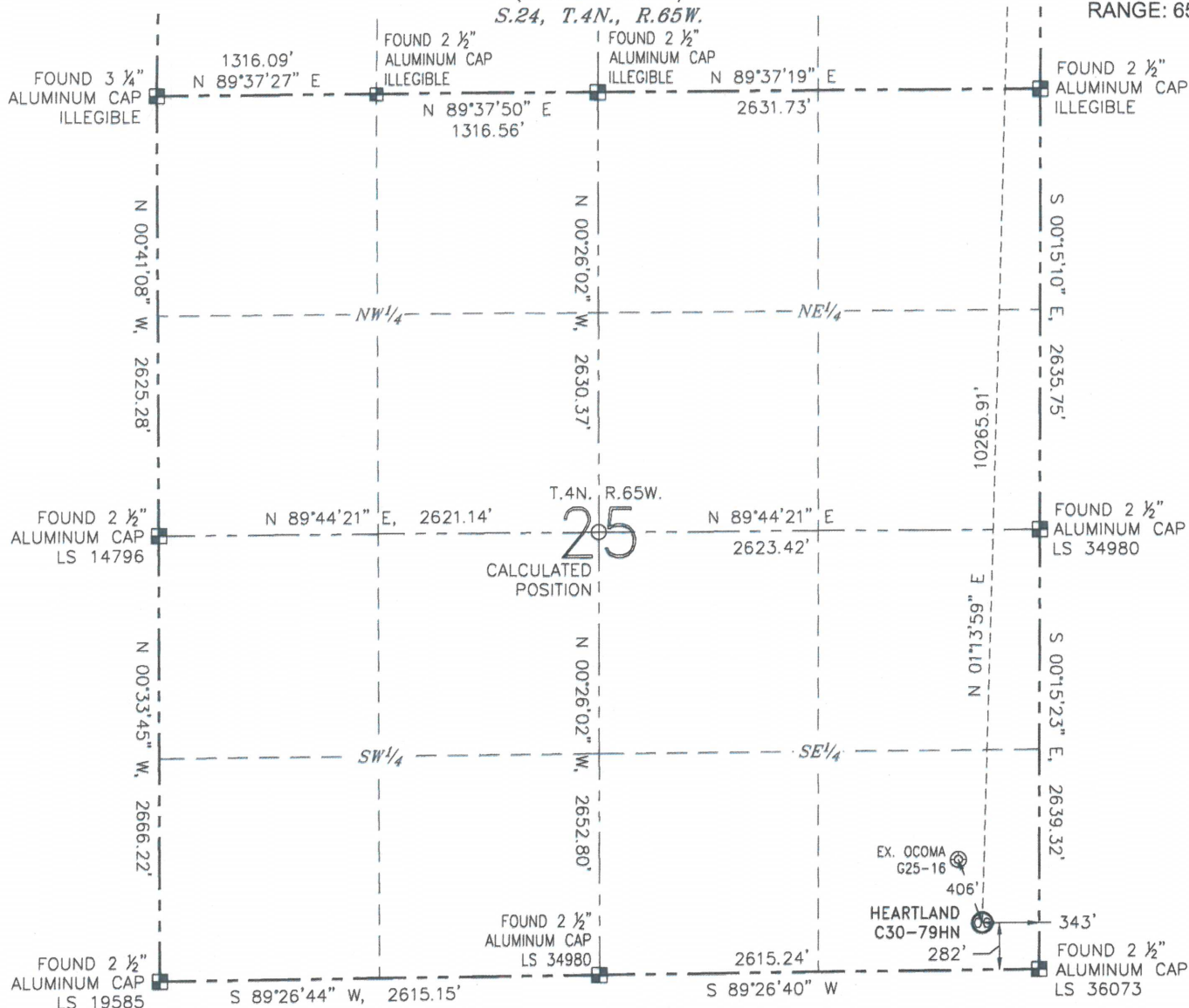


WELL LOCATION CERTIFICATE

HEARTLAND C30-79HN

(SHEET 1 OF 2)

S.24, T.4N., R.65W.

SECTION: 25
TOWNSHIP: 4N
RANGE: 65W

NOTES:

1. BEARINGS ARE GRID BEARINGS OF THE COLORADO STATE PLANE COORDINATE SYSTEM, NORTH ZONE, NAD 83. THE LINEAL DIMENSIONS SHOWN HEREON ARE BASED UPON THE "U.S. SURVEY FOOT".
2. GROUND ELEVATIONS ARE BASED UPON NGS OPUS SOLUTION NAVD 88 DATUM COMPUTED USING GEOID09.
3. IMPROVEMENTS: SEE LOCATION DRAWING FOR ALL VISIBLE IMPROVEMENTS WITHIN 500' OF THE DISTURBED AREA.
4. SURFACE USE: RANGELAND.
5. INSTRUMENT OPERATOR: ANTONIO SMITH.
6. THE NEAREST EXISTING WELL: OCOMA G25-16, 406' NW.

NEAREST CULTURAL ITEMS:

BUILDING:	1359' E
BUILDING UNIT:	1256' E
HIGH OCCUPANCY BUILDING UNIT:	5280' +
DESIGNATED OUTSIDE ACTIVITY AREA:	5280' +
PUBLIC ROAD (CR 49):	322' E
ABOVEGROUND UTILITY:	252' S
RAILROAD:	5280' +
PROPERTY LINE:	282' S



0 1000'

SCALE: 1" = 1000'

LEGEND

- | | | |
|-----------------|------------------|-----------------------|
| ⊗ PROPOSED WELL | ⊙ BOTTOM HOLE | ○ CALCULATED POSITION |
| ⊕ EXISTING WELL | ⊞ FOUND MONUMENT | |

SURFACE HOLE LOCATION

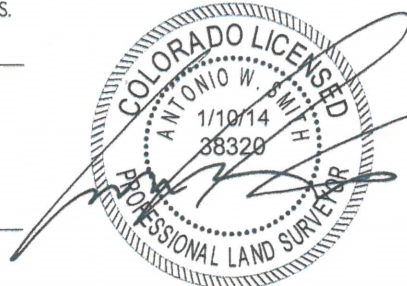
LATITUDE: N 40.27673°
 LONGITUDE: W 104.60356°
 PDOP: 1.5
 ELEVATION: 4844'
 1/4-1/4: SE 1/4 SE 1/4

BOTTOM HOLE LOCATION

LATITUDE: N 40.30490°
 LONGITUDE: W 104.60240°

IN ACCORDANCE WITH A REQUEST FROM MATT VERBIT WITH NOBLE ENERGY INC., R&R ENGINEERS-SURVEYORS, INC. HAS DETERMINED THE SURFACE HOLE LOCATION OF THE HEARTLAND C30-79HN WELL TO BE 282' FROM THE SOUTH LINE AND 343' FROM THE EAST LINE AS MEASURED AT RIGHT ANGLES FROM THE SECTION LINES OF SECTION 25, TOWNSHIP 4 NORTH, RANGE 65 WEST, AND THE BOTTOM HOLE LOCATION TO BE 75' FROM THE NORTH LINE AND 75' FROM THE EAST LINE AS MEASURED AT RIGHT ANGLES FROM THE SECTION LINES OF SECTION 24, TOWNSHIP 4 NORTH, RANGE 65 WEST OF THE 6TH PRINCIPAL MERIDIAN, WELD COUNTY, COLORADO.

I HEREBY CERTIFY THAT THIS WELL LOCATION CERTIFICATE WAS PREPARED BY ME, OR UNDER MY DIRECT SUPERVISION, THAT THE FIELD WORK WAS COMPLETED ON 09/30/2013, FOR AND ON BEHALF OF NOBLE ENERGY INC., THAT IT IS NOT A LAND SURVEY PLAT OR AN IMPROVEMENT SURVEY PLAT, AND THAT IT IS NOT TO BE RELIED UPON FOR ESTABLISHMENT OF FENCES, BUILDINGS, OR OTHER FUTURE IMPROVEMENT LINES.



ANTONIO W. SMITH, PLS 38320
 FOR AND ON BEHALF OF R&R ENGINEERS-SURVEYORS, INC. DATE: 01/10/2014
 JOB NO.: NE13301

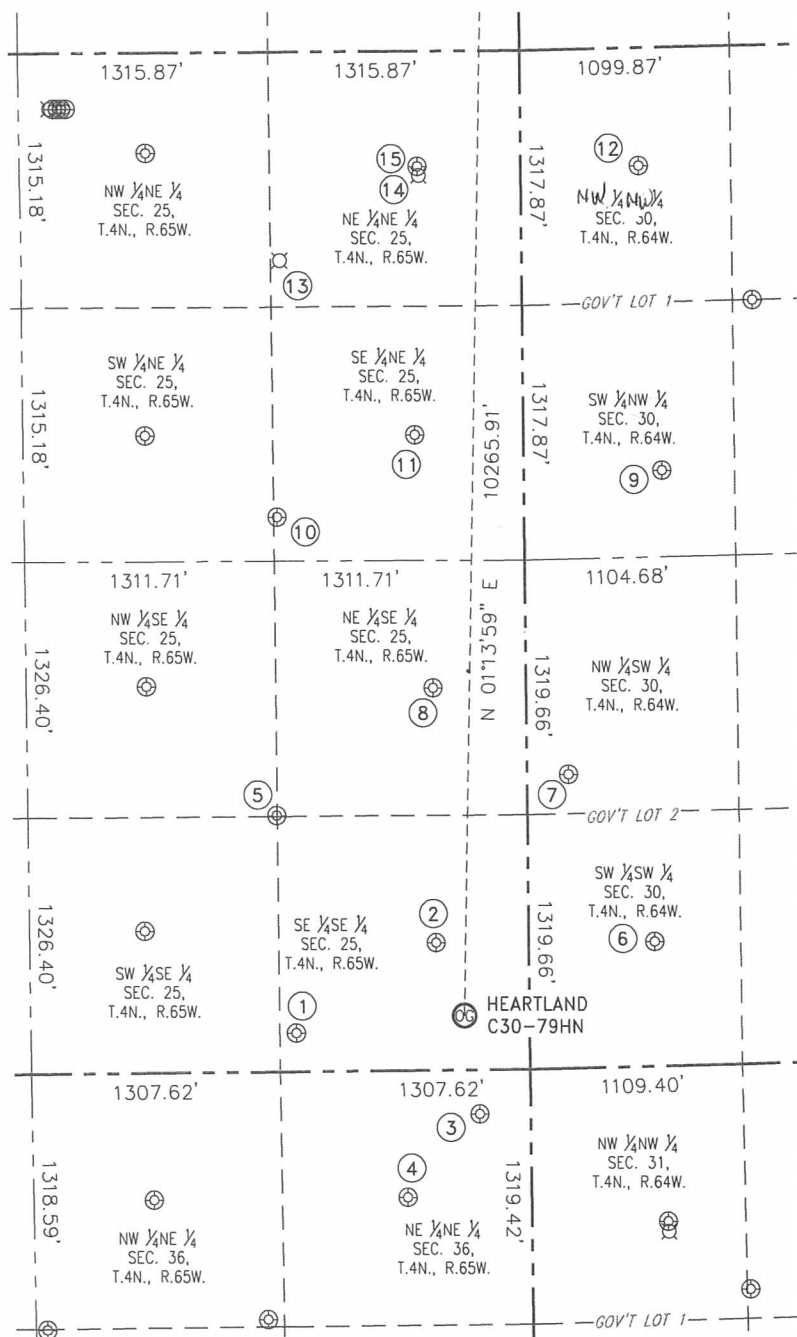
ANTONIO W. SMITH, PLS 38320
FOR AND ON BEHALF OF R&R DATE: 01/10/2014
ENGINEERS-SURVEYORS, INC. JOB NO.: NE13301

SITE SKETCH

HEARTLAND C30-79HN

(SHEET 1 OF 2)

SECTION: 25
TOWNSHIP: 4N
RANGE: 65W

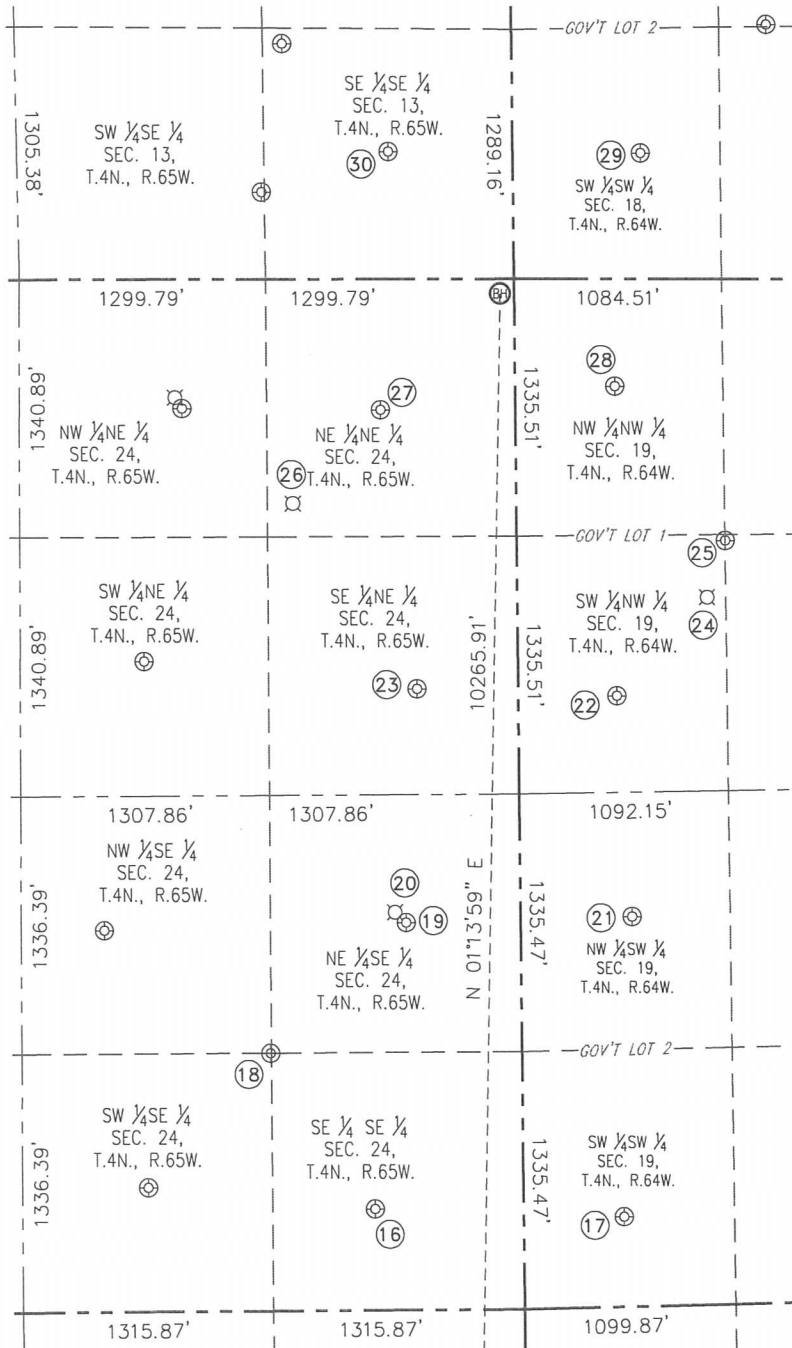


SITE SKETCH

HEARTLAND C30-79HN

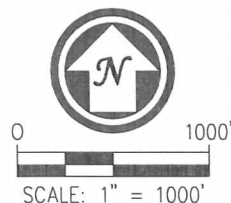
(SHEET 2 OF 2)

SECTION: 25
TOWNSHIP: 4N
RANGE: 65W



NOTES:

1. THIS SKETCH DOES NOT REPRESENT A BOUNDARY SURVEY.
2. HORIZONTAL DATUM IS NAD 83.
3. VERTICAL DATUM IS NAVD 88.



LEGEND

- ⊗ PROPOSED WELL
- ⊙ EXISTING WELL
- ⊕ BOTTOM HOLE
- ⊘ ABANDONED WELL

- 16 BURKE RG 24-16
SE 1/4 SE 1/4
525' FSL 779' FEL
LAT: N 40.29189°
LONG: W 104.60502°
PDOP: 1.4
ELEV: 4834'
- 17 VICTOR C19-13
SW 1/4 SW 1/4
468' FSL 520' FWL
LAT: N 40.29174°
LONG: W 104.60036°
PDOP: 1.7
ELEV: 4862'
- 18 BROOMFIELD 24-45
SW 1/4 SE 1/4
1335' FSL 1317' FEL
LAT: N 40.29412°
LONG: W 104.60693°
PDOP: 1.3
ELEV: 4816'
- 19 BURKE 24-3
NE 1/4 SE 1/4
2010' FSL 600' FEL
LAT: N 40.29596°
LONG: W 104.60435°
PDOP: 1.3
ELEV: 4830'
- 20 BURKE 24-35
NE 1/4 SE 1/4
PER COGCC:
2063' FSL
658' FEL
PLUGGED &
ABANDONED
- 21 VICTOR C19-12
NW 1/4 SW 1/4
2022' FSL 579' FEL
LAT: N 40.29601°
LONG: W 104.60012°
PDOP: 2.1
ELEV: 4861'
- 22 FREEDOM ONE C19-5
SW 1/4 NW 1/4
2162' FNL 512' FWL
LAT: N 40.299715°
LONG: W 104.60034°
PDOP: 1.8
ELEV: 4859'
- 23 BURKE RG 24-8
SE 1/4 NE 1/4
2127' FNL 532' FEL
LAT: N 40.29928°
LONG: W 104.60408°
PDOP: 1.2
ELEV: 4836'
- 24 SUNSET MINE NO.1
SW 1/4 NW 1/4
PER COGCC:
1650' FNL
990' FWL
PLUGGED &
ABANDONED
- 25 BROOMFIELD 18-19
SW 1/4 NW 1/4
1358' FNL 1088' FWL
LAT: N 40.30134°
LONG: W 104.59826°
PDOP: 2.3
ELEV: 4869'
- 26 BROOMFIELD 24-15
NE 1/4 NE 1/4
PER COGCC:
1166' FNL
1172' FEL
PLUGGED &
ABANDONED
- 27 API 24-1
NE 1/4 NE 1/4
680' FNL 708' FEL
LAT: N 40.30325°
LONG: W 104.60468°
PDOP: 2.0
ELEV: 4837'
- 28 FREEDOM TWO C19-4
NW 1/4 NW 1/4
557' FNL 519' FWL
LAT: N 40.30356°
LONG: W 104.60028°
PDOP: 2.6
ELEV: 4857'
- 29 FARR I
SW 1/4 SW 1/4
651' FSL 665' FEL
LAT: 40.30687°
LONG: 104.59973°
PDOP: 3.1
ELEV: 4848
- 30 HUNTSMAN G13-16
SE 1/4 SE 1/4
658' FNL 652' FEL
LAT: N 40.30692°
LONG: W 104.60446°
PDOP: 1.8
ELEV: 4824'

DATE: 01/10/2014
JOB NO.: NE13301