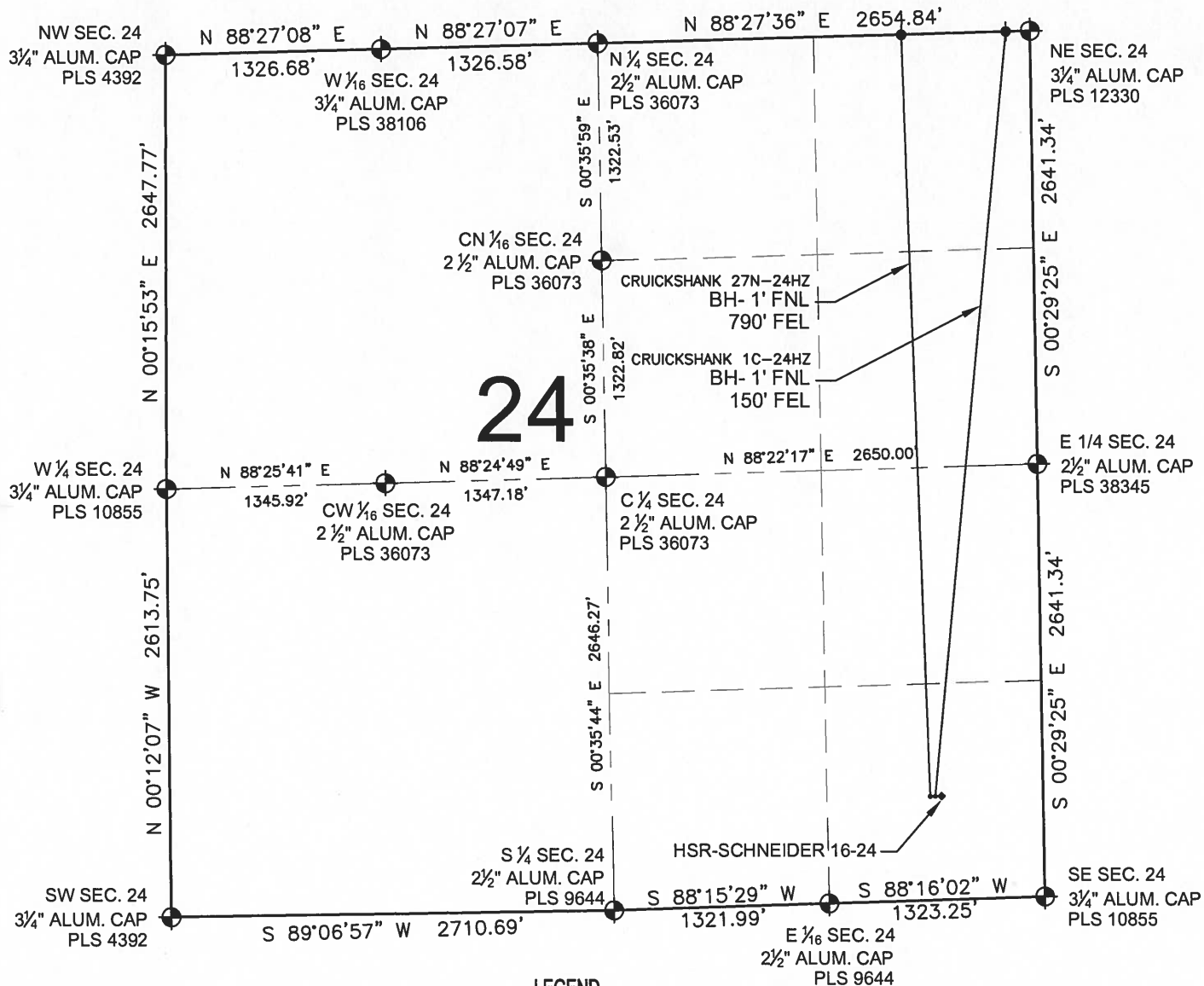


# CRUICKSHANK 1C-24HZ MULTI-WELL PLAN

SECTION 24, TOWNSHIP 3 NORTH, RANGE 66 WEST, 6TH P.M.



## NOTES:

CRUICKSHANK 27N-24HZ TO BE AT 634' FSL, 694' FEL.  
BOTTOM HOLE AT 1' FNL & 790' FEL.  
CRUICKSHANK 1C-24HZ TO BE AT 634' FSL, 664' FEL.  
BOTTOM HOLE AT 1' FNL & 150' FEL.  
1) EXISTING WELL HSR-SCHNEIDER 16-24 IS 634' FSL  
AND 634' FEL.

## LEGEND

= EXISTING MONUMENT   
 = BOTTOM HOLE   
 BH= BOTTOM HOLE  
 = PROPOSED WELL   
 = EXISTING WELL

PREPARED BY:



KERR-MCGEE OIL & GAS ONSHORE LP

FIELD DATE:  
08-22-12

DRAWING DATE:  
09-16-13

SURFACE LOCATION:

SE 1/4 SE 1/4, SEC. 24, T3N, R66W, 6TH P.M.  
WELD COUNTY, COLORADO

