

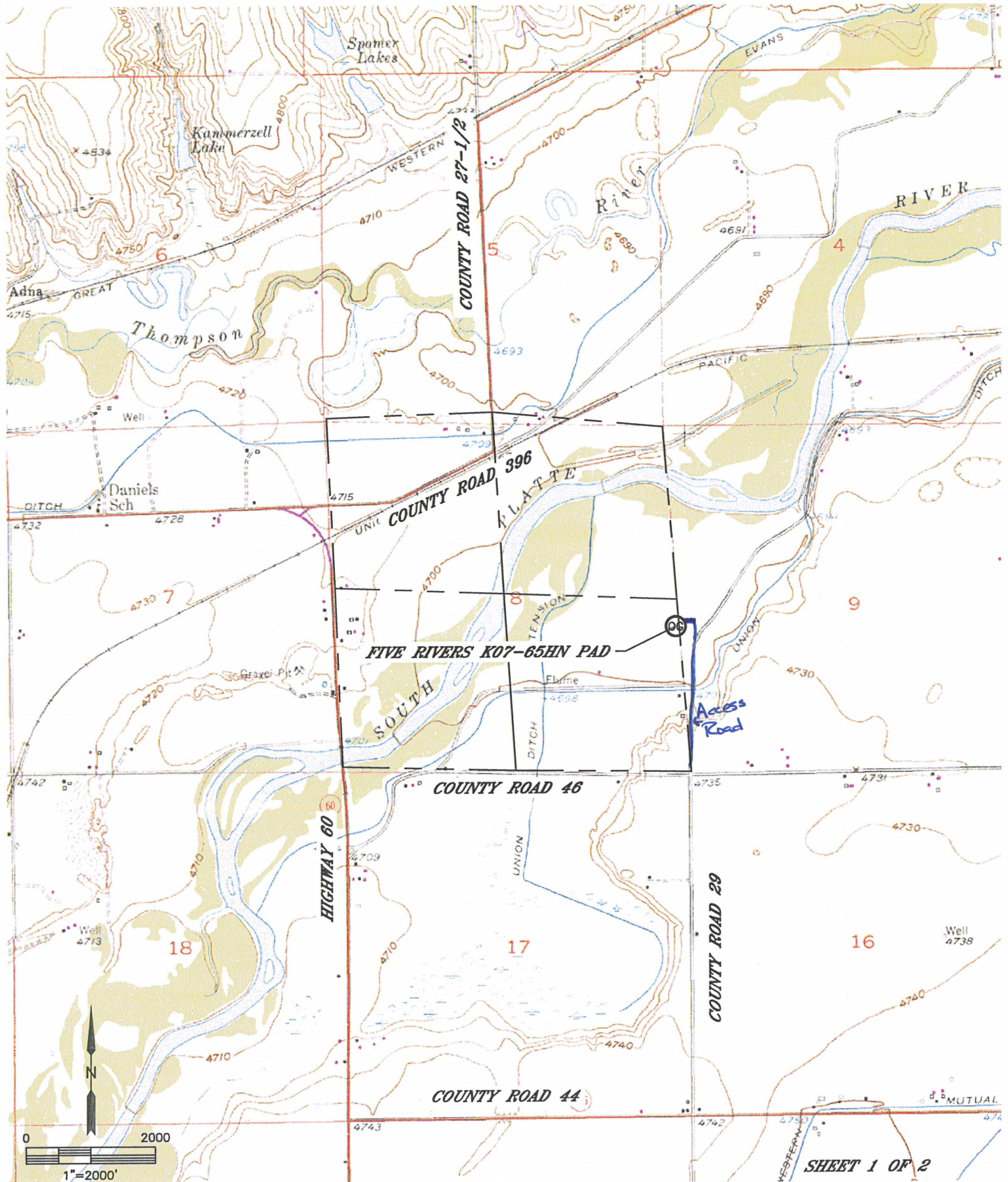


Lat40°, Inc. 1635 Foxtrail Drive, Suite 325 Loveland, CO 970-776-3321

ACCESS ROAD MAP

FIVE RIVERS K07-65HN PAD

SECTION: 8
TOWNSHIP: 4N
RANGE: 66W



DATE: 11/6/2013
PROJECT#: 2013063