

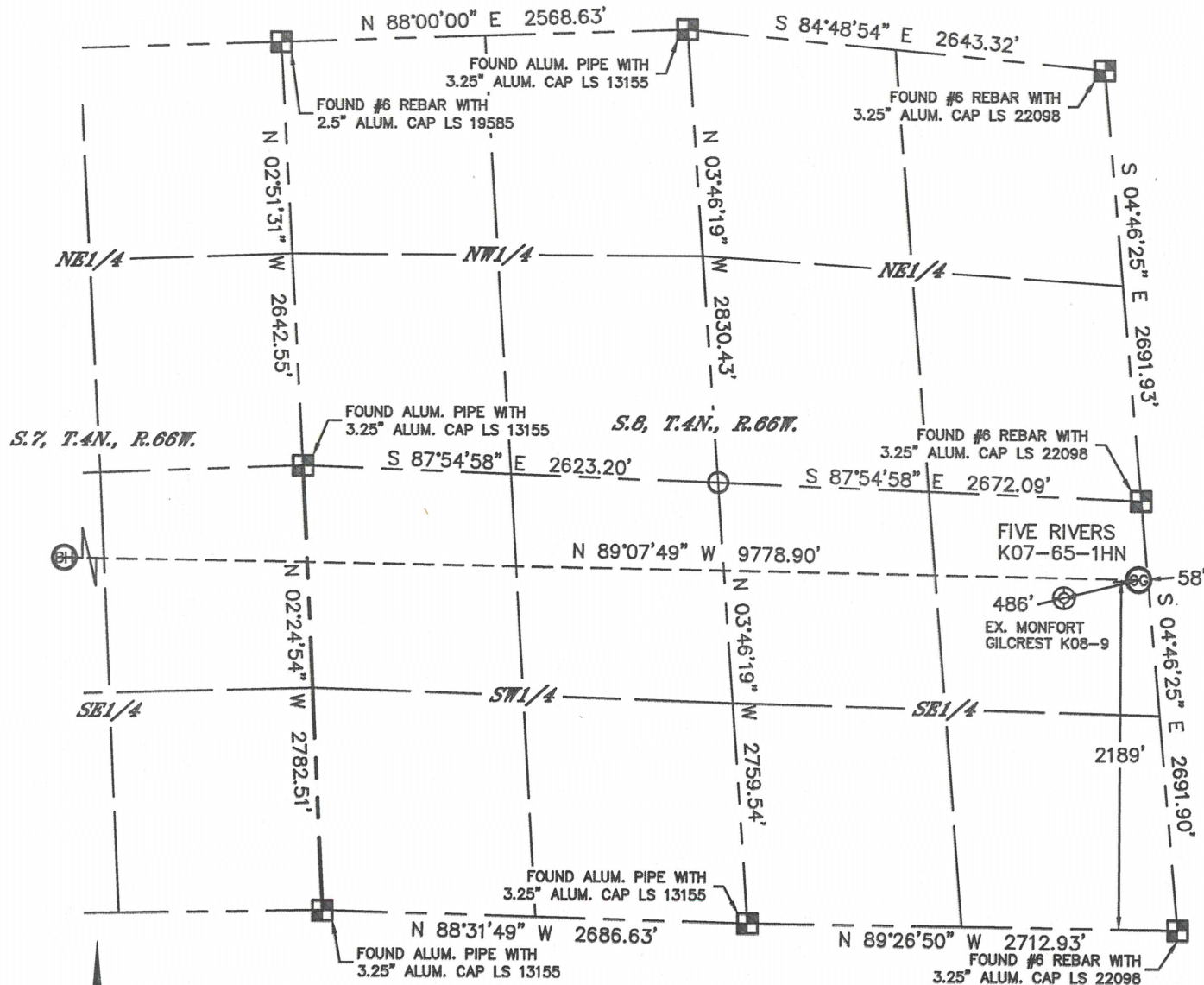


Lat40°, Inc. 1635 Foxtrail Drive, Suite 325 Loveland, CO 970-776-3321

# WELL LOCATION CERTIFICATE

THIS MAP DOES NOT REPRESENT A BOUNDARY SURVEY

SECTION: 8  
TOWNSHIP: 4N  
RANGE: 66W



In accordance with a request from Brian DeRose with Noble Energy Inc.

Lat40°, Inc. has determined the surface location of the FIVE RIVERS K07-65-1HN to be 2189' from the SOUTH line and 58' from the EAST line as measured at right angles from the section lines of Section 8, Township 4 North, Range 66 West and the bottom hole to be 2310' from the SOUTH line and 535' from the WEST line as measured at right angles from the section lines of Section 7, Township 4 North, Range 66 West of the Sixth Principal Meridian, County of Weld, State of Colorado.

I hereby state that this Well Location Certificate was prepared by me, or under my direct supervision, that the fieldwork was completed on 8/21/2013, for and on behalf of Noble Energy Inc. That this is not a Land Survey Plat or an Improvement Survey Plat, and that it is not to be relied upon for establishment of fence, building, or other future improvement lines.

## NOTE:

- Bearings shown are Grid Bearings of the Colorado State Plane Coordinate System, North Zone, North American Datum 1983/2007. The lineal dimensions as contained herein are based upon the "U.S. Survey Foot."
- Ground elevations are based on an observed GPS elevation (NAVD 1988 DATUM).
- IMPROVEMENTS: See LOCATION DRAWING for all visible improvements within 500' of disturbed area.
- SURFACE USE: RANGELAND
- INSTRUMENT OPERATOR: BRIAN ROTTINGHAUS
- NEAREST EXISTING WELL: MONFORT GILCREST K08-9, 486'
- NEAREST CULTURAL ITEMS:  
BUILDING: ±1452' E  
BUILDING UNIT: ±2662' SE  
HIGH OCCUPANCY BUILDING UNIT: 1001'+  
DESIGNATED OUTSIDE ACTIVITY AREA: 1001'+  
PUBLIC ROAD: 2178' S (CR 46)  
ABOVEGROUND UTILITY: 396' SE  
RAILROAD: ±3689' NW  
PROPERTY LINE: 58' E

## SURFACE LOCATION

LAT: 40.32493°N  
LONG: 104.79277°W  
PDOP: 1.7  
ELEV: 4700'  
1/4, 1/4: NE1/4SE1/4

## BOTTOM HOLE

LAT: 40.32555°N  
LONG: 104.82782°W

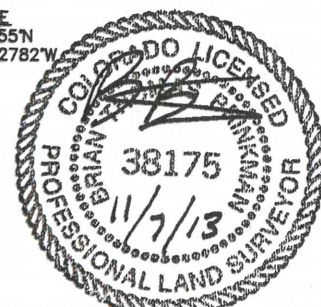
## LEGEND

- = ALIQUOT MONUMENT AS DESCRIBED  
○ = CALCULATED POSITION

## SHEET 1 OF 2

Brian T. Brinkman—On behalf of Lat40°, Inc.  
Colorado Licensed Professional  
Land Surveyor No. 38175

DATE: 11/07/2013  
PROJECT#: 2013063



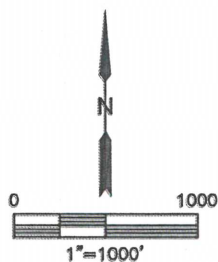
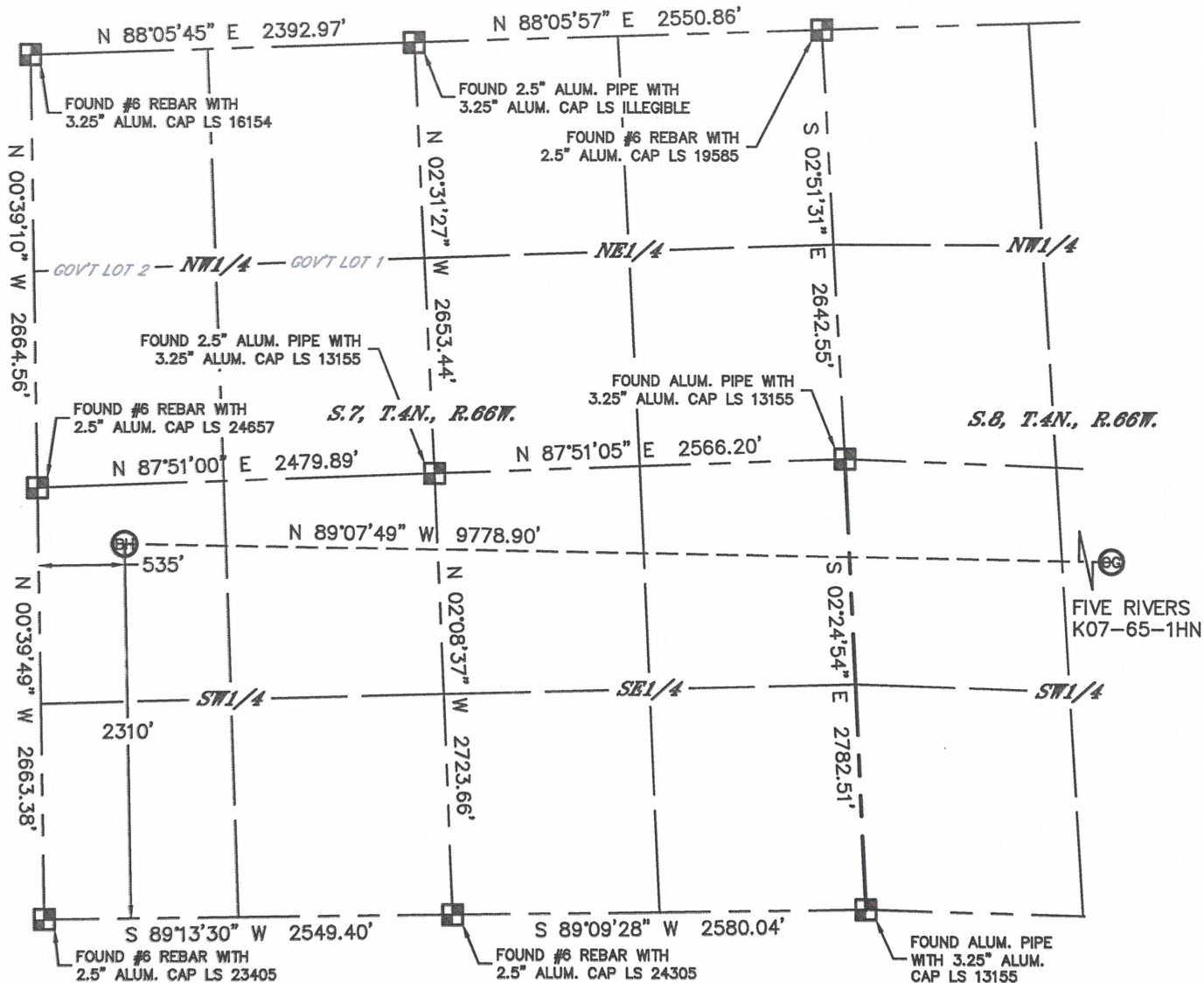


Lat40°, Inc. 1635 Foxtrail Drive, Suite 325 Loveland, CO 970-776-3321

# WELL LOCATION CERTIFICATE

THIS MAP DOES NOT REPRESENT A BOUNDARY SURVEY

SECTION: 8  
TOWNSHIP: 4N  
RANGE: 66W

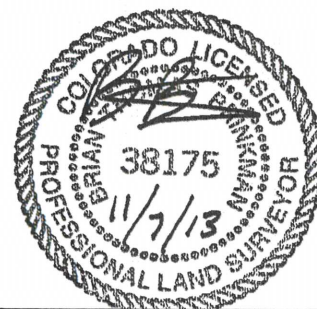


## LEGEND

- = ALIQUOT MONUMENT AS DESCRIBED
- = CALCULATED POSITION

## SHEET 2 OF 2

Brian T. Brinkman—On behalf of Lat40°, Inc.  
Colorado Licensed Professional Land Surveyor No. 38175  
DATE: 11/07/2013  
PROJECT#: 2013063



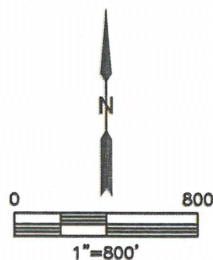
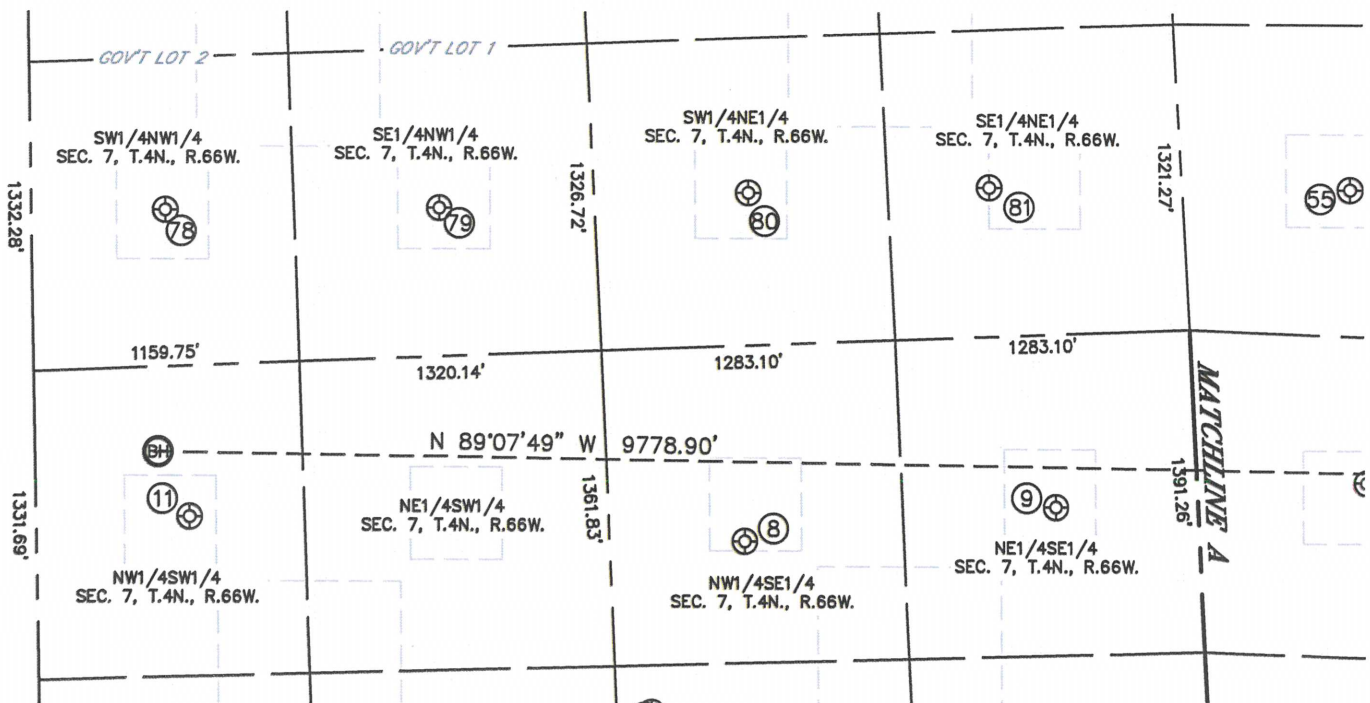
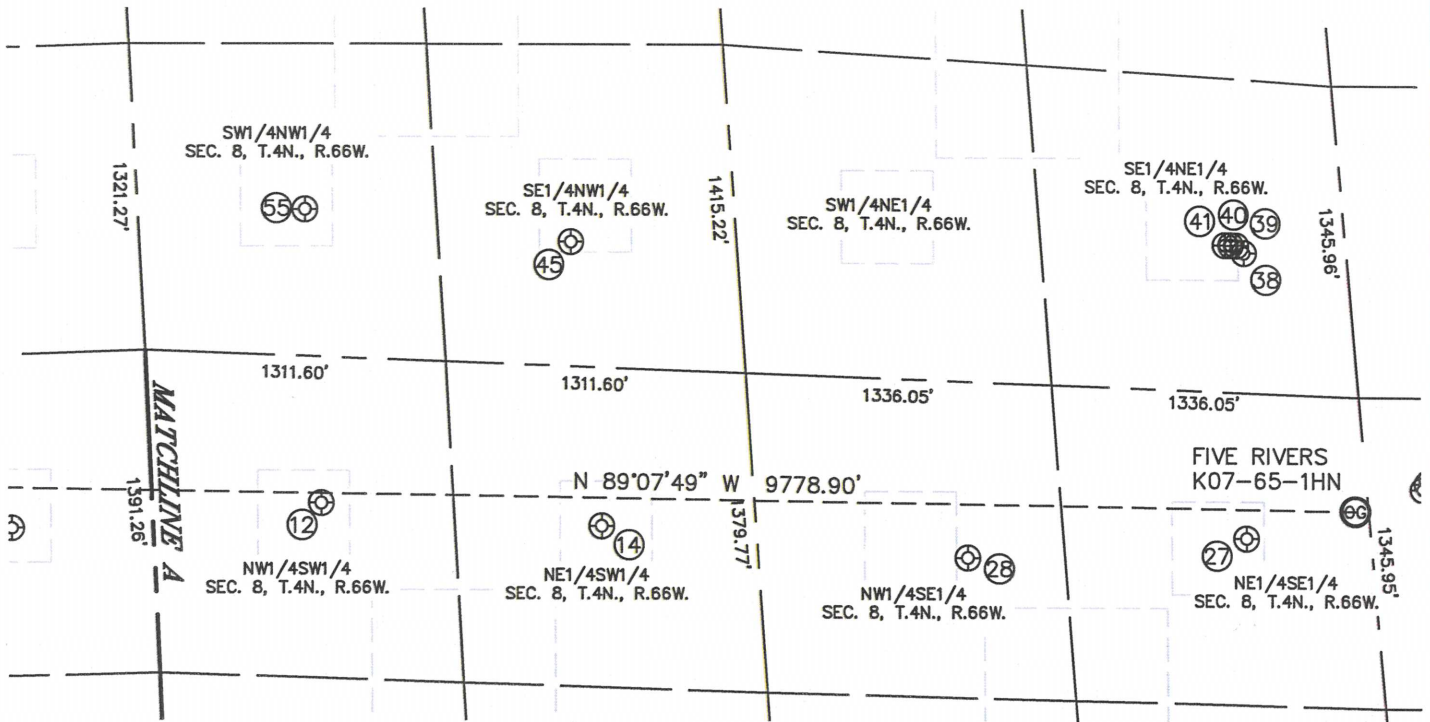


Lat40°, Inc. 1635 Foxtrail Drive, Suite 325 Loveland, CO 970-776-3321

# SITE SKETCH

## FIVE RIVERS K07-65-1HN

SECTION: 8  
TOWNSHIP: 4N  
RANGE: 66W



SHEET 1 OF 2

DATE: 11/07/2013  
PROJECT#: 2013063





Lat40°, Inc. 1635 Foxtrail Drive, Suite 325 Loveland, CO 970-776-3321

# SITE SKETCH

FIVE RIVERS K07-65-1HN

SECTION: 8  
TOWNSHIP: 4N  
RANGE: 66W

WELL NO.	WELL NAME	SHL FOOTAGE				SHL LAT°	SHL LONG°	PDOP	ELEV (FT.)	1/4/1/4
8	KAMMERZELL 7-42	1892	FSL	1980	FEL	40.32444	-104.81865	3.0	4733	NWSE
9	KAMMERZELL 7-41	2023	FSL	617	FEL	40.32483	-104.81378	2.7	4709	NESE
11	BERNHARDT 1-11	2028	FSL	668	FWL	40.32478	-104.82734	1.4	4734	NWSW
12	ED KAM 3-28	2138	FSL	736	FWL	40.3251	-104.80894	2.4	4713	NWSW
14	ED KAM 4-33	2072	FSL	1957	FWL	40.3248	-104.80454	2.0	4705	NESW
27	MONFORT GILCREST K 8-9	2067	FSL	538	FEL	40.32462	-104.79446	1.6	4700	NESE
28	MONFORT GILCREST K 8-10	1967	FSL	1755	FEL	40.3244	-104.79882	1.6	4700	NWSE
38	MONFORT GILCREST K 8-8	2080	FNL	443	FEL	40.32799	-104.79445	1.7	4698	SENE
39	FIVE RIVERS K08-17D	2050	FNL	472	FEL	40.32808	-104.79457	1.7	4698	SENE
40	FIVE RIVERS K08-22D	2051	FNL	497	FEL	40.32808	-104.79466	1.8	4698	SENE
41	FIVE RIVERS K08-07D	2053	FNL	521	FEL	40.32808	-104.79474	1.8	4698	SENE
45	GW/ ED KAM 2-23	2241	FNL	1880	FWL	40.32816	-104.80498	1.4	4703	SENW
55	ED KAM 1-21	2061	FNL	727	FWL	40.32857	-104.80914	1.9	4717	SWNW
78	BERNHARDT 7-1	1987	FNL	583	FWL	40.32841	-104.82766	2.0	4732	SWNW
79	BERNHARDT 7-2	2016	FNL	1780	FWL	40.32841	-104.82337	2.3	4731	SENW
80	KAMMERZELL 1-9	1994	FNL	1888	FEL	40.32857	-104.81853	2.6	4730	SWNE
81	KAMMERZEL 7-4	2003	FNL	838	FEL	40.32862	-104.81476	2.9	4731	SENE