

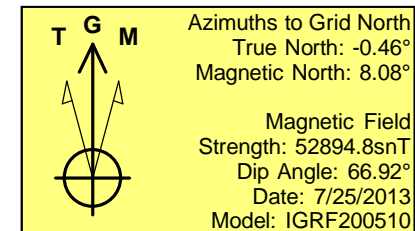
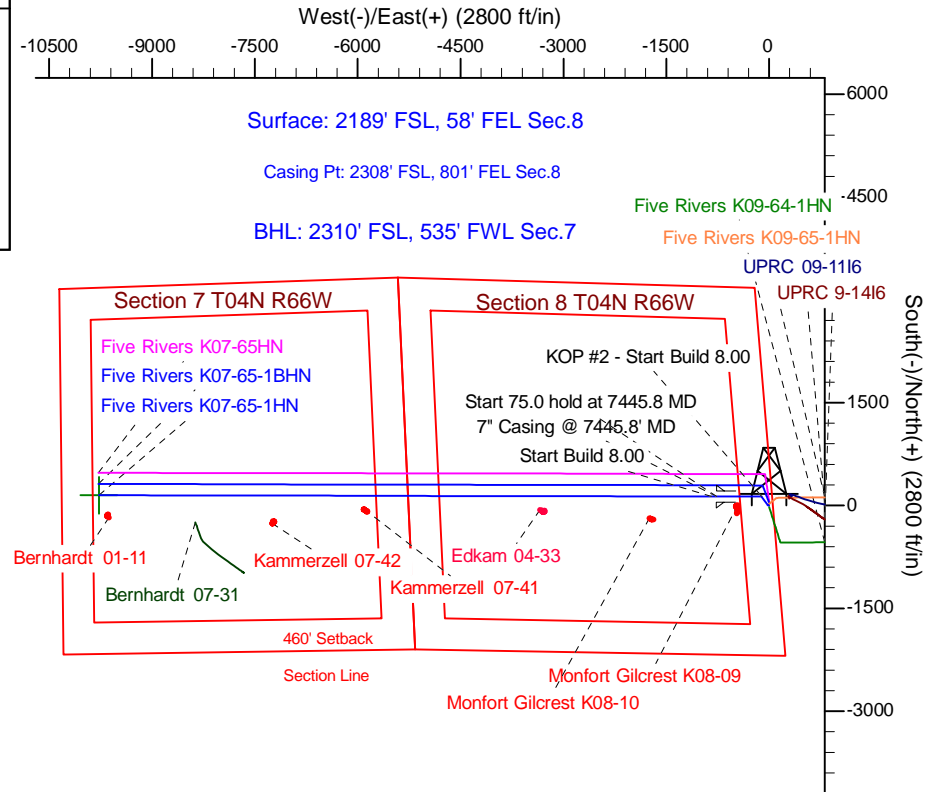
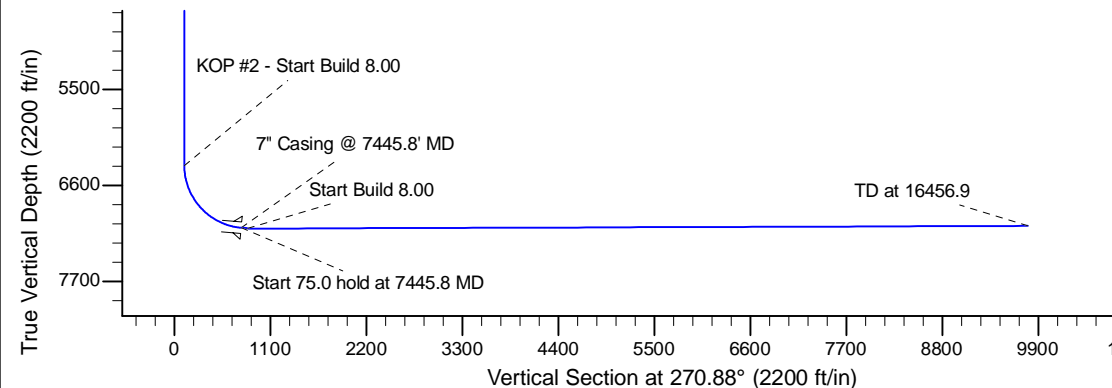
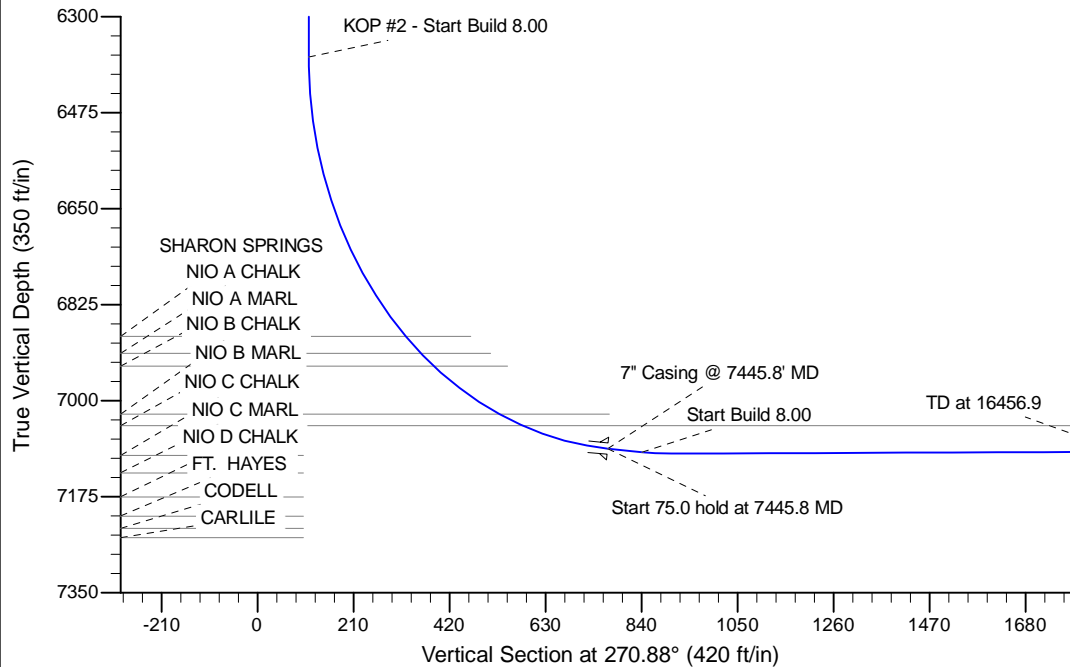
Project: Wattenberg Field
 Site: K (Sec.8-T04N-R66W) Weld County, CO
 Well: Five Rivers K07-65-1HN
 Wellbore: Original Drilling
 Design: APD - Rev 0

Northern Region Drilling - Working

Geodetic System: US State Plane 1983
 Datum: North American Datum 1983
 Ellipsoid: GRS 1980
 Zone: Colorado Northern Zone
 System Datum: Mean Sea Level

SECTION DETAILS

Sec	MD	Inc	Azi	TVD	+N/-S	+E/-W	Dleg	TFace	VSec	Target
1	0.0	0.00	0.00	0.0	0.0	0.0	0.00	0.00	0.0	
2	1500.0	0.00	0.00	1500.0	0.0	0.0	0.00	0.00	0.0	
3	1650.0	3.00	270.00	1649.9	0.0	-3.9	2.00	270.00	3.9	
4	1750.0	3.00	270.00	1749.8	0.0	-9.2	0.00	0.00	9.2	
5	2025.2	6.69	324.24	2024.1	13.0	-25.8	2.00	80.37	25.9	
6	3094.5	6.69	324.24	3086.1	114.2	-98.6	0.00	0.00	100.3	
7	3429.2	0.00	0.00	3420.0	130.0	-110.0	2.00	180.00	112.0	
8	6383.3	0.00	0.00	6374.1	130.0	-110.0	0.00	0.00	112.0	
9	7445.8	85.00	270.12	7087.6	131.3	-763.8	8.00	270.12	765.7	
10	7520.8	85.00	270.12	7094.1	131.5	-838.5	0.00	0.00	840.4	
11	7585.8	90.20	270.12	7096.9	131.6	-903.4	8.00	0.00	905.3	
12	16456.9	90.20	270.12	7065.9	149.9	-9774.4	0.00	0.00	9775.6	Five Rivers K07-65-1HN BHL 2310'FSL, 535'FWL



WELL DETAILS: Five Rivers K07-65-1HN					
Ground Level: 4700.0					
0.0	0.0	Northing 1361999.17	Easting 3197186.90	Latitude 40.324930	Longitude -104.792770
Plan: APD - Rev 0 (Five Rivers K07-65-1HN/Original Drilling)					
Created By: Shailey Jewell			Date: 14:53, March 05 2014		
OK to submit with 2A as per Noble Drilling 3/07/2014 12:48					