

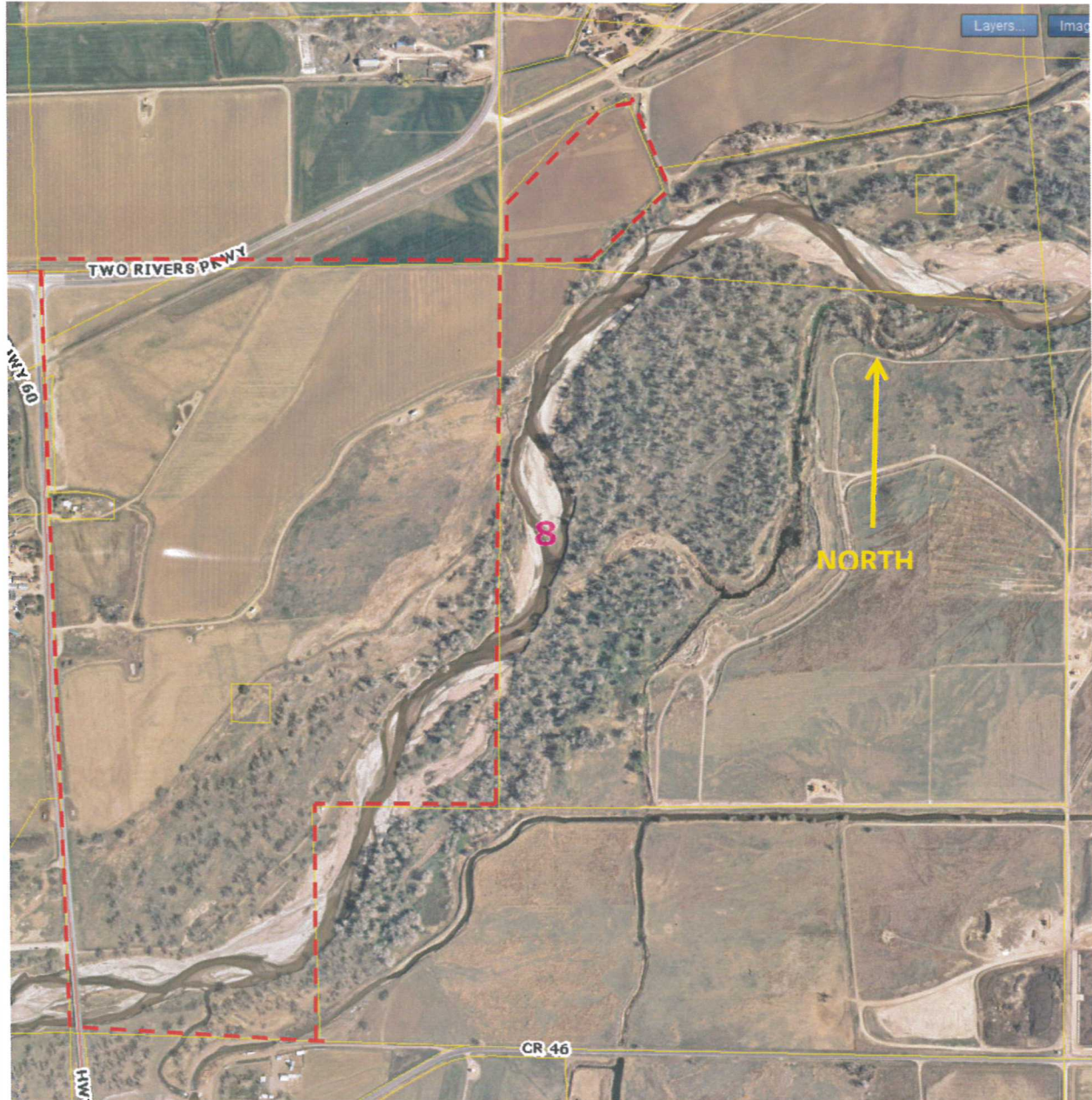
## LEASE DESCRIPTION FOR APD

Well Name: Five Rivers K07-65-1BHN

Lease Description: Township 4 North, Range 66 West, 6<sup>th</sup> P.M.

Sec. 8: S/2NW/4, W/2SW/4, NE/4SW/4 and a certain tract of land in the Southwest corner of the NW/4NE/4 more particularly described as follows:  
Beginning at the Southwest corner of the NW/4NE/4, running thence 89°26' East for 509 ft.; thence North 43°11' East for 550 ft.; thence North 20°53' West for 505 ft.; thence South 64°47' West for 261 ft.; thence South 47°0' West for 647 ft.; thence South 322 ft. to the point of beginning.  
Containing 217.00 acres, more or less.

Source of aerial photo: Weld County Assessor's website



Red outline represents lease boundary.

Map is for informational purposes only and not to scale.