

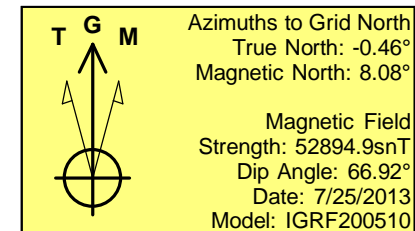
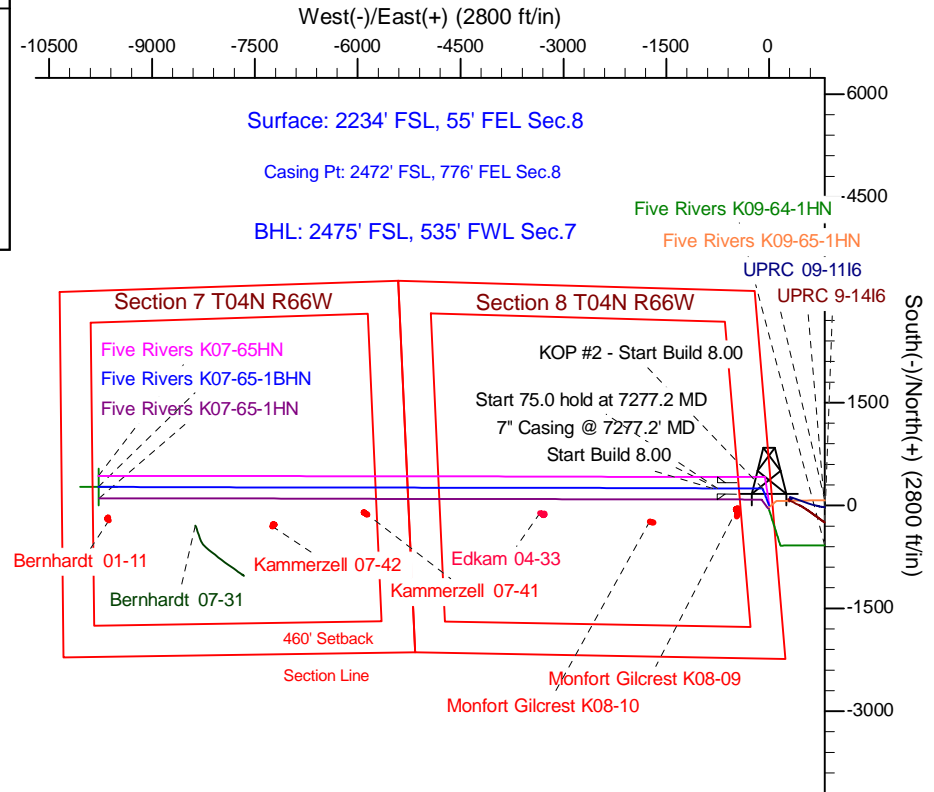
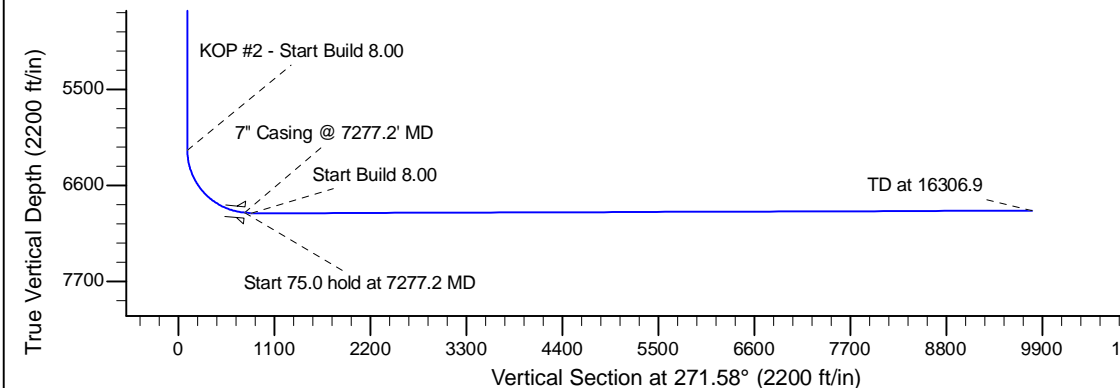
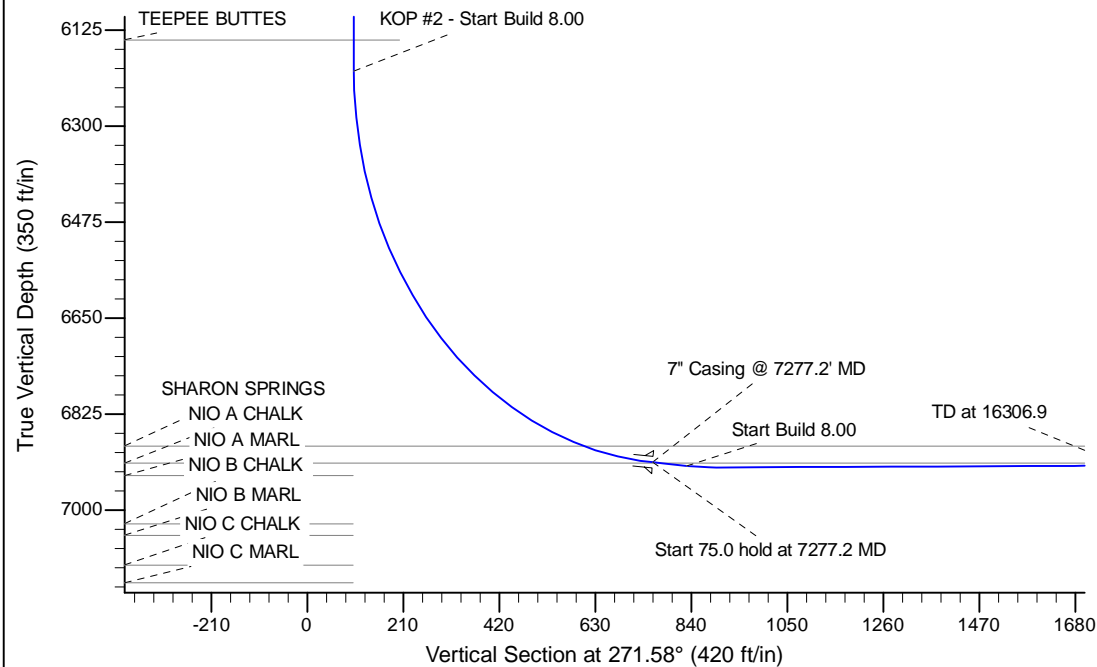
Project: Wattenberg Field
 Site: K (Sec.8-T04N-R66W) Weld County, CO
 Well: Five Rivers K07-65-1BHN
 Wellbore: Original Drilling
 Design: APD - Rev 0

Northern Region Drilling - Working

Geodetic System: US State Plane 1983
 Datum: North American Datum 1983
 Ellipsoid: GRS 1980
 Zone: Colorado Northern Zone
 System Datum: Mean Sea Level

SECTION DETAILS

Sec	MD	Inc	Azi	TVD	+N/-S	+E/-W	Dleg	TFace	VSec	Target
1	0.0	0.00	0.00	0.0	0.0	0.0	0.00	0.00	0.0	
2	1200.0	0.00	0.00	1200.0	0.0	0.0	0.00	0.00	0.0	
3	1551.6	7.03	339.19	1550.8	20.1	-7.7	2.00	339.19	8.2	
4	3383.9	7.03	339.19	3369.2	229.9	-87.3	0.00	0.00	93.7	
5	3735.5	0.00	0.00	3720.0	250.0	-95.0	2.00	180.00	101.9	
6	6214.6	0.00	0.00	6199.1	250.0	-95.0	0.00	0.00	101.9	
7	7277.2	85.00	270.12	6912.6	251.4	-748.8	8.00	270.12	755.4	
8	7352.2	85.00	270.12	6919.1	251.5	-823.5	0.00	0.00	830.1	
9	7417.2	90.20	270.12	6921.8	251.6	-888.4	8.00	0.00	895.0	
10	16306.9	90.20	270.12	6890.8	270.1	-9778.1	0.00	0.00	9781.9	Five Rivers K07-65-1AHN BHL 2475'FSL, 535'FWL



WELL DETAILS: Five Rivers K07-65-1BHN

Ground Level: 4700.0		Latitude		Longitude	
0.0	0.0	1362042.89	3197186.55	40.325050	-104.792770

Plan: APD - Rev 0 (Five Rivers K07-65-1BHN/Original Drilling)

Created By: Shailey Jewell Date: 14:41, March 05 2014

OK to submit with 2A as per Noble Drilling
 3/07/2014 12:48