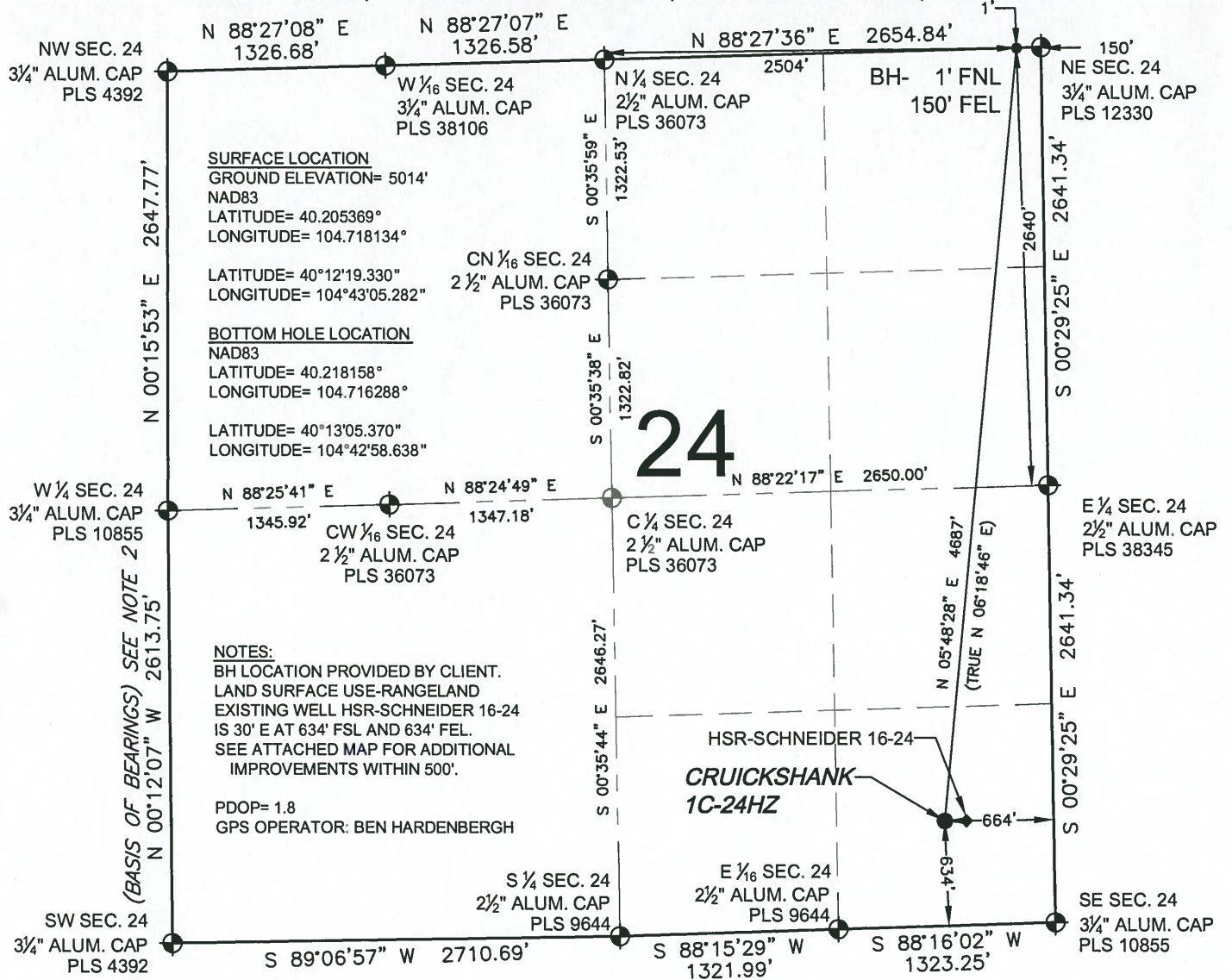


# WELL LOCATION CERTIFICATE: CRUICKSHANK 1C-24HZ

SECTION 24, TOWNSHIP 3 NORTH, RANGE 66 WEST, 6TH P.M.



WELL CRUICKSHANK 1C-24HZ TO BE LOCATED 634' FSL AND 664' FEL

## LEGEND

- = EXISTING MONUMENT    ◆ = BOTTOM HOLE    BH = BOTTOM HOLE  
● = PROPOSED WELL    ◆ = EXISTING WELL

## NOTES:

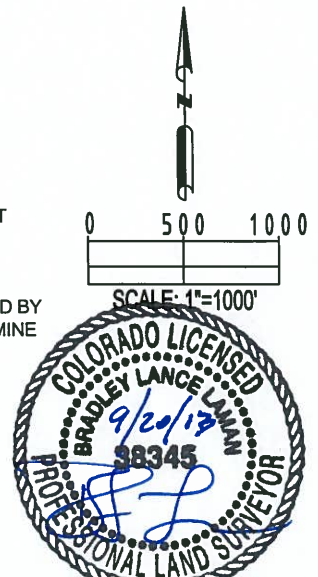
1. THIS FIELD SURVEY CONFORMS TO THE MINIMUM STANDARDS SET BY THE C.O.G.C.C., RULE NO. 215
2. BEARINGS AND DISTANCES SHOWN HEREON ARE GRID AND BASED ON THE COLORADO STATE PLANE COORDINATE SYSTEM, NAD 83/2011 BETWEEN MONUMENTS AS LABELED HEREON AND ELEVATIONS SHOWN ARE NAVD 88, AS DERIVED BY GPS OBSERVATIONS.
3. GRID DISTANCES ARE SHOWN, AS MEASURED IN THE FIELD, WITH TIES TO WELLS MEASURED PERPENDICULAR TO SECTION LINES.

I, BRADLEY L. LAMAN, A LICENSED PROFESSIONAL LAND SURVEYOR IN THE STATE OF COLORADO DO HEREBY CERTIFY TO **KERR-MCGEE OIL & GAS ONSHORE LP**, THAT THE SURVEY AND WELL LOCATION CERTIFICATE SHOWN HEREON WERE DONE BY ME OR UNDER MY DIRECT SUPERVISION AND THAT THE DRAWING SHOWN HEREON ACCURATELY DEPICTS THE PROPOSED LOCATION OF THE WELL. THIS CERTIFICATE DOES NOT REPRESENT A LAND SURVEY PLAT OR IMPROVEMENT SURVEY PLAT AS DEFINED BY C.R.S. 38-51-102 AND CANNOT BE RELIED UPON TO DETERMINE OWNERSHIP.

BRADLEY L. LAMAN, PLS 38345  
COLORADO LICENSED PROFESSIONAL LAND SURVEYOR  
FOR AND ON BEHALF OF P.F.S., LLC

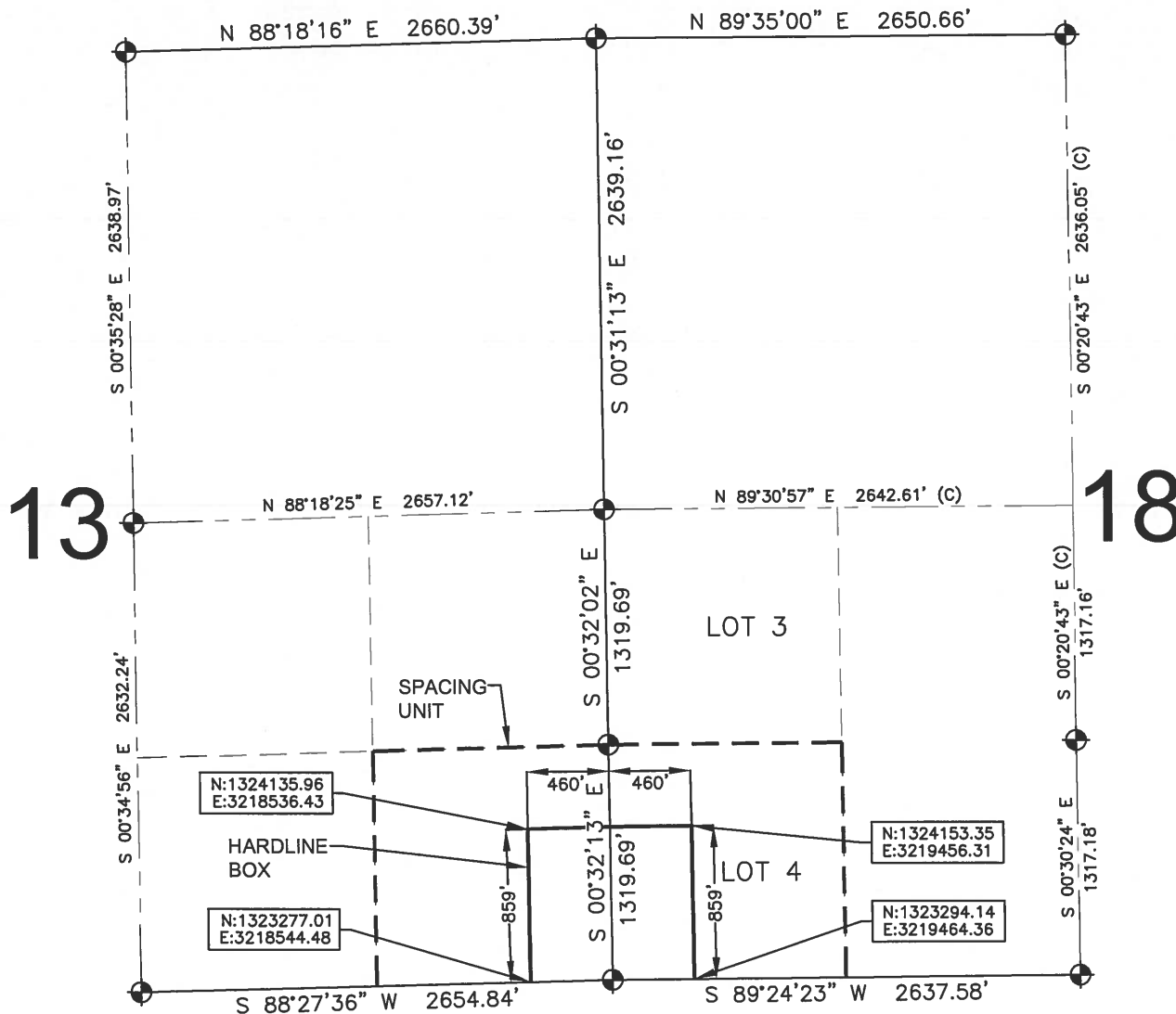
NOTICE: ACCORDING TO COLORADO LAW YOU MUST COMMENCE ANY LEGAL ACTION BASED UPON ANY DEFECT IN THIS SURVEY WITHIN THREE YEARS AFTER YOU FIRST DISCOVER SUCH DEFECT. IN NO EVENT MAY ANY ACTION BASED UPON ANY DEFECT IN THIS SURVEY BE COMMENCED MORE THAN TEN YEARS FROM THIS SAID DATE OF THIS CERTIFICATION SHOWN HEREON.

PREPARED BY: <b>PFS</b> Petroleum Field Services, LLC 1801 W. 13th Ave. Denver, CO 80204	FIELD DATE: 08-22-12	SURFACE LOCATION:
	DRAWING DATE: 09-16-13	SE 1/4 SE 1/4,
	BY: JAH	SEC. 24, T3N, R66W, 6TH P.M.
	CHECKED: CPO	WELD COUNTY, COLORADO



# HARDLINE EXHIBIT: CRUICKSHANK 1C-24HZ

SECTION 13, TOWNSHIP 3 NORTH, RANGE 66 WEST, 6TH P.M.



## LEGEND

⊕ = EXISTING MONUMENT    ⊕ = BOTTOM HOLE  
● = PROPOSED HEEL        BH = BOTTOM HOLE

## HEEL LOCATION

NAD83  
LATITUDE= 40.202670°  
LONGITUDE= 104.716292°

## QRT/QRT SECTIONS WITHIN PATH OF THE HARDLINE.

SESE, SEC. 13  
LOT 4, SW 1/4, SEC. 18, T3N, R66W

LATITUDE= 40°12'09.611"  
LONGITUDE= 104°42'58.652"

## BOTTOM HOLE LOCATION

NAD83  
LATITUDE= 40.218158°  
LONGITUDE= 104.716288°

## AVAILABLE FOOTAGE

6998'

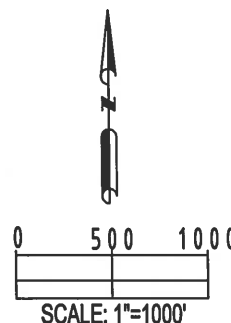
## NOTES:

- THIS DOCUMENT IS NOT A LAND SURVEY PLAT OR IMPROVEMENT SURVEY PLAT. THIS DOCUMENT DOES NOT REFLECT A FIELD SURVEY. SECTION BREAKDOWN, MONUMENTATION AND HORIZONTAL POSITIONS SHOWN ARE BASED ON THE HEEL AND BOTTOM HOLE LOCATION PROVIDED BY ANADARKO PETROLEUM CORPORATION

SHEET 1 OF 3



DRAWING DATE:	HEEL LOCATION:
02-24-14	NE 1/4 NE 1/4,
BY:	SEC. 25, T3N, R66W, 6TH P.M.
SMF	WELD COUNTY, COLORADO
CHECKED:	
DRF	



SECTION 24, TOWNSHIP 3 NORTH, RANGE 66 WEST, 6TH P.M.



 = EXISTING MONUMENT       = BOTTOM HOLE  
 = PROPOSED HEEL      BH = BOTTOM HOLE

NOTES:

1. THIS DOCUMENT IS NOT A LAND SURVEY PLAT OR IMPROVEMENT SURVEY PLAT. THIS DOCUMENT DOES NOT REFLECT A FIELD SURVEY. SECTION BREAKDOWN, MONUMENTATION AND HORIZONTAL POSITIONS SHOWN ARE BASED ON THE HEEL AND BOTTOM HOLE LOCATION PROVIDED BY ANADARKO PETROLEUM CORPORATION

QRT/QRT SECTIONS WITHIN PATH OF THE HARDLINE.

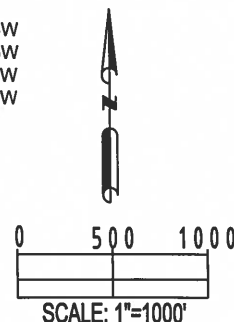
NENE, SEC. 24  
SENE, SEC. 24  
NESE, SEC. 24  
SESE, SEC. 24

LOT 1, NW 1/4, SEC. 19, T3N, R65W  
LOT 2, NW 1/4, SEC. 19, T3N, R65W  
LOT 3, SW 1/4, SEC. 19, T3N, R65W  
LOT 4, SW 1/4, SEC. 19, T3N, R65W



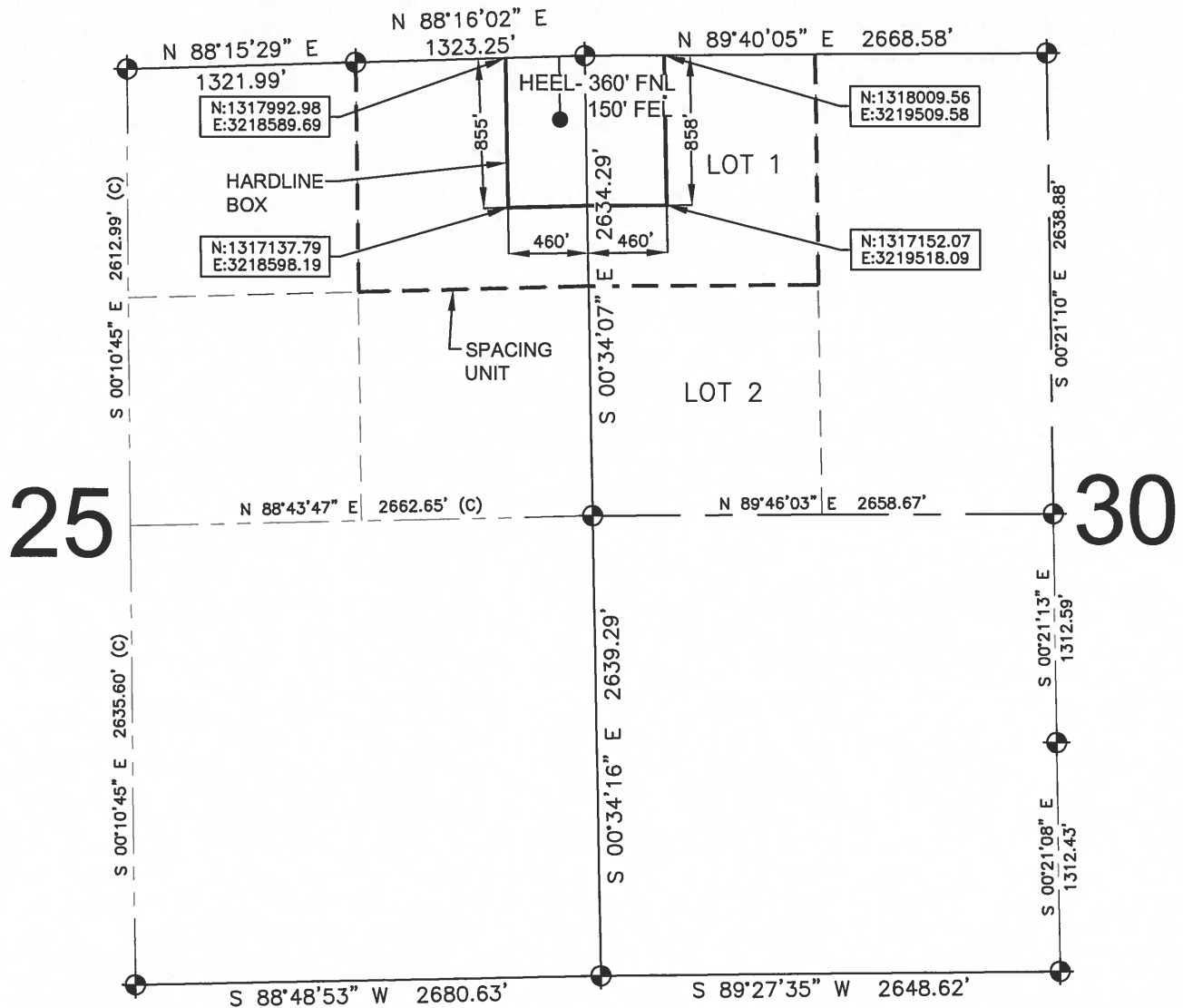
SHEET 2 OF 3

DRAWING DATE: 02-24-14		HEEL LOCATION: NE 1/4 NE 1/4, SEC. 25, T3N, R66W, 6TH P.M. WELD COUNTY, COLORADO
BY: SMF	CHECKED: DRF	



# HARDLINE EXHIBIT: CRUICKSHANK 1C-24HZ

SECTION 25, TOWNSHIP 3 NORTH, RANGE 66 WEST, 6TH P.M.



## LEGEND

- ⊕ = EXISTING MONUMENT
- ⊙ = PROPOSED HEEL
- ⊕ = BOTTOM HOLE
- BH = BOTTOM HOLE

QRT/QRT SECTIONS WITHIN PATH OF THE HARDLINE.

NENE, SEC. 25

LOT 1, NW 1/4, SEC. 30, T3N, R66W

## NOTES:

- THIS DOCUMENT IS NOT A LAND SURVEY PLAT OR IMPROVEMENT SURVEY PLAT. THIS DOCUMENT DOES NOT REFLECT A FIELD SURVEY. SECTION BREAKDOWN, MONUMENTATION AND HORIZONTAL POSITIONS SHOWN ARE BASED ON THE HEEL AND BOTTOM HOLE LOCATION PROVIDED BY ANADARKO PETROLEUM CORPORATION

PREPARED BY:



SHEET 3 OF 3

DRAWING DATE: 02-24-14	HEEL LOCATION: NE 1/4 NE 1/4, SEC. 25, T3N, R66W, 6TH P.M.
BY: SMF	CHECKED: DRF
WELD COUNTY, COLORADO	

