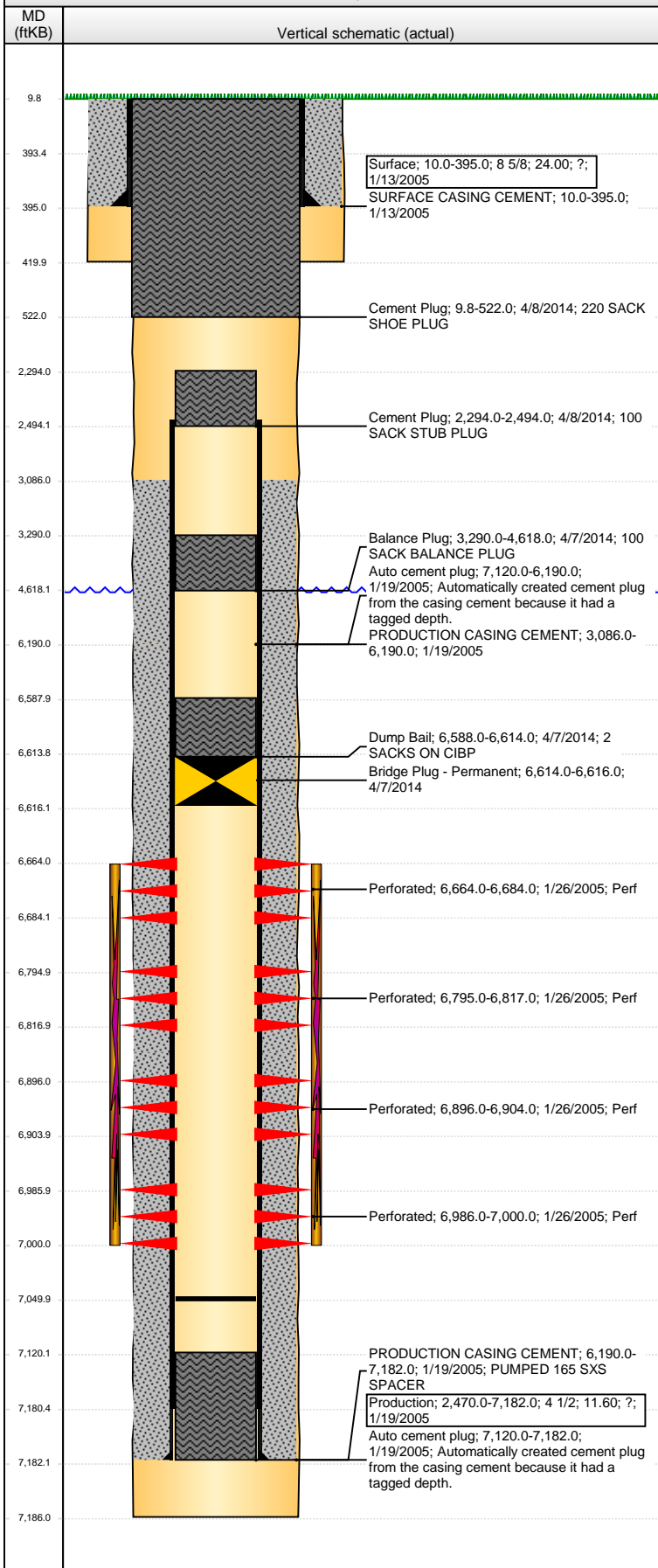


Well Name: DINNER 13-33

VERTICAL - ORIGINAL HOLE, 4/17/2014 10:27:08 AM



Well Header							
API	05-123-22370	Business Unit	WATTENBERG	District	15	Well Config	VERTICAL
Original KB Elevation (ft)	4,711.00	KB - GL / MSL (ftKB)	10.00	Spud Date	1/12/2005	P & A Date	4/8/2014
Comment DISCREPANCY: DR RPT TD 7186; ST RPT TD 7141							
Directions To Well							
Congressional Location							
Quarter 1	Quarter 2	Quarter 3	Quarter 4	Section	Township	Twnshp N...	Range
	NE	SW	SW	13	6	N	65
Rng E/W Dir	W						
Bottom Hole Location							
North-South Distance (ft)		From N or S Line		East-West Distance (ft)		From E or W Line	
Plug Back Total Depths							
Date	Depth (ftKB)	Method		Com			
1/25/2005	7,120.0	CASED HOLE LOG		DEPTH LOGGER ON CBL			
12/24/2005	7,050.0	TAG		CLEAN OUT TO LAND TUBING			
Wellbore Sections							
Section Des		Size (in)	Act Top, MD (ftKB)		Act Btm, MD (ftKB)		
SURFACE		12 1/4	10.0		420.0		
PRODUCTION		7 7/8	420.0		7,186.0		
Zone Statuses							
Zone Name	Status Date	Status		Job			
CODELL	1/31/2005	PR		DRILLING/COMPLETION - ORIGINAL, 1/12/2005 00:00			
CODELL	4/7/2014	P&A		ABANDON WELL, 4/7/2014 06:00			
NIOBRARA	1/31/2005	PR		DRILLING/COMPLETION - ORIGINAL, 1/12/2005 00:00			
NIOBRARA	4/7/2014	P&A		ABANDON WELL, 4/7/2014 06:00			
Casing Strings							
Surface, 395.0ftKB							
Casing Description	Run Date	OD (in)	Wt/Len (L...)	Grade	Top, MD (ft...)	MD (ftKB)	
Surface	1/13/2005	8 5/8	24.00	?	10.0	395.0	
Production, 7,182.0ftKB							
Casing Description	Run Date	OD (in)	Wt/Len (L...)	Grade	Top, MD (ft...)	MD (ftKB)	
Production	1/19/2005	4 1/2	11.60	?	10.0	7,182.0	
Cement							
Description	Top Depth (ftKB)		Bottom Depth (ftKB)				
SURFACE CASING CEMENT	10.0		395.0				
Description	Top Depth (ftKB)		Bottom Depth (ftKB)				
PRODUCTION CASING CEMENT	3,086.0		6,190.0				
Description	Top Depth (ftKB)		Bottom Depth (ftKB)				
PRODUCTION CASING CEMENT	6,190.0		7,182.0				
Description	Top Depth (ftKB)		Bottom Depth (ftKB)				
Dump Bail	6,588.0		6,614.0				
Description	Top Depth (ftKB)		Bottom Depth (ftKB)				
Balance Plug	3,290.0		4,618.0				
Description	Top Depth (ftKB)		Bottom Depth (ftKB)				
Cement Plug	2,294.0		2,494.0				
Description	Top Depth (ftKB)		Bottom Depth (ftKB)				
Cement Plug	9.8		522.0				
Tubing Components							
Item Des	OD (in)	Wt (lb/ft)	Grade	Jts	Len (ft)	Btm (ftKB)	Btm (TVD) (ftKB)
Perforation Data							
Zone	Bnch/St g	Entered Shot Total	Top (ftKB)	Btm (ftKB)	Date		
NIOBRARA, ORIGINAL HOLE	A		6,664.00	6,684.00	1/26/2005		
NIOBRARA, ORIGINAL HOLE	B		6,795.00	6,817.00	1/26/2005		
NIOBRARA, ORIGINAL HOLE	C		6,896.00	6,904.00	1/26/2005		
CODELL, ORIGINAL HOLE			6,986.00	7,000.00	1/26/2005		
Stimulations & Treatments							
Date	Zone	Primary Job Type					
1/28/2005	NIOBRARA-CODELL, ORIGINAL HOLE	DRILLING/COMPLETION - ORIGINAL					
Technical Result	Tech Result Details			Tech Result Note			
Failure	Screen-Out						
Comment LIMITED ENTRY; NIO SCREENED OUT							

Well Name: DINNER 13-33

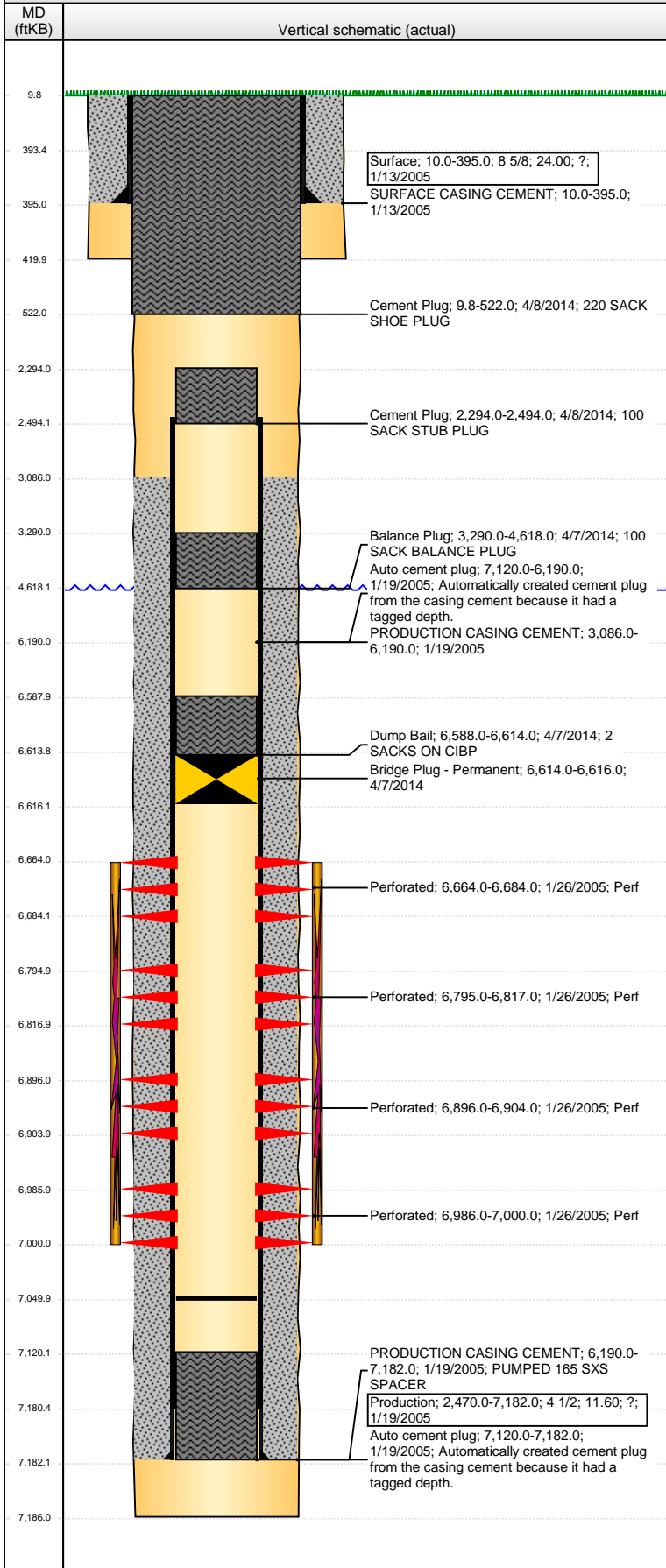
VERTICAL - ORIGINAL HOLE, 4/17/2014 10:27:10 AM

Other In Hole

Run Date	Des	OD (in)	Top (ftKB)	Btm (ftKB)
4/7/2014	Bridge Plug - Permanent	3.99	6,614.0	6,616.0

Logs

Date	Type	Top, MD (ftKB)	Btm, MD (ftKB)
1/19/2005	COMPENSATED DENSITY	3,500.0	7,166.0
1/19/2005	INDUCTION	395.0	7,186.0
1/25/2005	CBL/CCL/GR	2,900.0	7,118.0



Surface; 10.0-395.0; 8 5/8; 24.00; ?;
1/13/2005
SURFACE CASING CEMENT; 10.0-395.0;
1/13/2005

Cement Plug; 9.8-522.0; 4/8/2014; 220 SACK
SHOE PLUG

Cement Plug; 2,294.0-2,494.0; 4/8/2014; 100
SACK STUB PLUG

Balance Plug; 3,290.0-4,618.0; 4/7/2014; 100
SACK BALANCE PLUG
Auto cement plug; 7,120.0-6,190.0;
1/19/2005; Automatically created cement plug
from the casing cement because it had a
tagged depth.
PRODUCTION CASING CEMENT; 3,086.0-
6,190.0; 1/19/2005

Dump Bail; 6,588.0-6,614.0; 4/7/2014; 2
SACKS ON CIBP
Bridge Plug - Permanent; 6,614.0-6,616.0;
4/7/2014

Perforated; 6,664.0-6,684.0; 1/26/2005; Perf

Perforated; 6,795.0-6,817.0; 1/26/2005; Perf

Perforated; 6,896.0-6,904.0; 1/26/2005; Perf

Perforated; 6,986.0-7,000.0; 1/26/2005; Perf

PRODUCTION CASING CEMENT; 6,190.0-
7,182.0; 1/19/2005; PUMPED 165 SXS
SPACER
Production; 2,470.0-7,182.0; 4 1/2; 11.60; ?;
1/19/2005
Auto cement plug; 7,120.0-7,182.0;
1/19/2005; Automatically created cement plug
from the casing cement because it had a
tagged depth.