



Radial Cement Bond  
Gamma Ray  
CCL

Company Bill Barrett Corporation  
Well 70 Ranch 04-63-3225CDH  
Field Wattenberg  
County Weld  
State Colorado

Company Bill Barrett Corporation  
Well 70 Ranch 04-63-3225CDH  
Field Wattenberg  
County Weld State Colorado

Location: 2040' FSL & 234' FWL  
API # : 05-123-37931  
Other Services  
SEC 3 TWP 4N RGE 63W  
Permanent Datum GL Elevation 4559  
Log Measured From KB 23  
Drilling Measured From GL

Date 2-25-2014

Run Number 1  
Depth Driller 11150  
Depth Logger 6120  
Bottom Logged Interval 6118  
Top Log Interval Surface  
Open Hole Size 8.875  
Type Fluid Water  
Density / Viscosity 1.0  
Max. Recorded Temp. 212  
Estimated Cement Top 768  
Time Well Ready  
Time Logger on Bottom  
Equipment Number 4740  
Location Greeley  
Recorded By Jeremiah Bullard  
Witnessed By Johnny Dawran

| Borehole Record |       |      |       | Tubing Record |        |      |    |
|-----------------|-------|------|-------|---------------|--------|------|----|
| Run Number      | Bit   | From | To    | Size          | Weight | From | To |
| One             | 12.25 | 0    | 830   |               |        |      |    |
| Two             | 8.75  | 830  | 6930  |               |        |      |    |
| Three           | 6.185 | 6930 | 11150 |               |        |      |    |

|                   |       |        |      |        |
|-------------------|-------|--------|------|--------|
| Casing Record     | Size  | Wgt/Ft | Top  | Bottom |
| Surface String    | 9.875 | 36#    | 0    | 830    |
| Prot. String      |       |        |      |        |
| Production String | 7     | 26#    | 0    | 6911   |
| Liner             | 4.5   |        | 6064 | 11150  |

<<< Fold Here >>>

All interpretations are opinions based on inferences from electrical or other measurements and we cannot and do not guarantee the accuracy or correctness of any interpretation, and we shall not, except in the case of gross or willful negligence on our part, be liable or responsible for any loss, costs, damages, or expenses incurred or sustained by anyone resulting from any interpretation made by any of our officers, agents or employees. These interpretations are also subject to our general terms and conditions set out in our current Price Schedule.

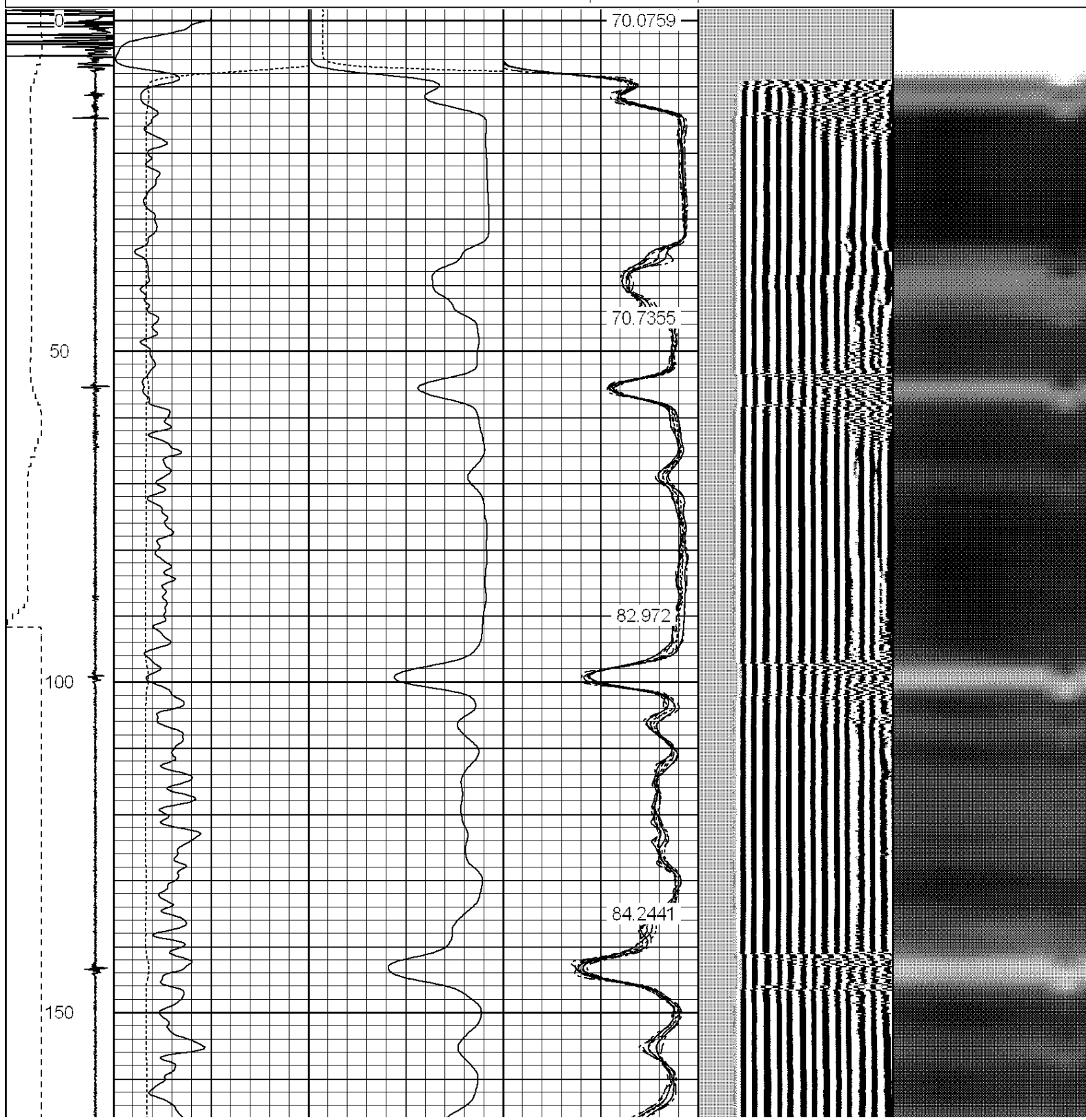
Comments

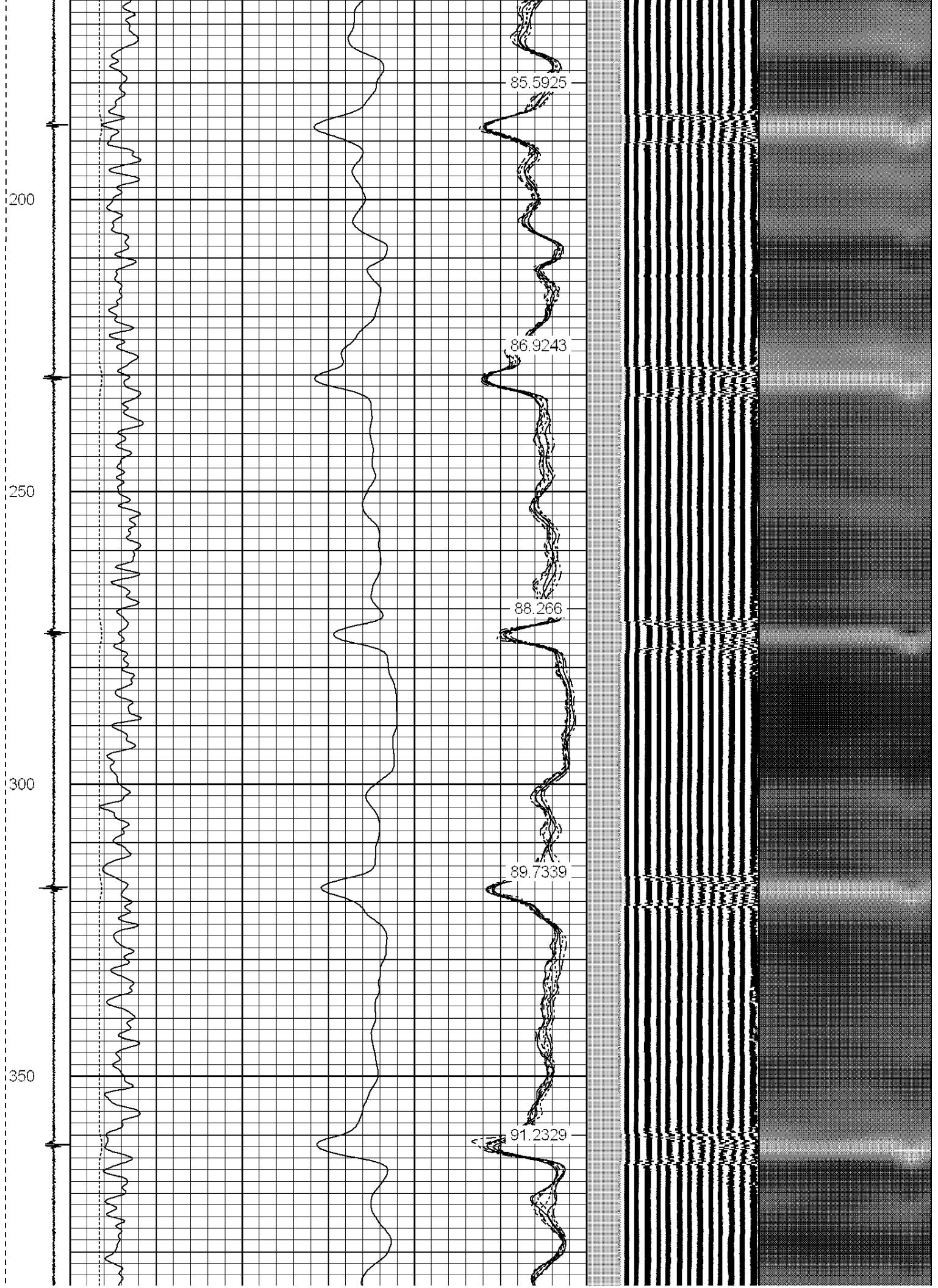
Ran CBL to verify cement under 1000PSI  
correlated to pipe tally and liner top

| Sensor | Offset (ft) | Schematic   | Description | Len (ft) | OD (in) | Wt (lb) |
|--------|-------------|---|-------------|----------|---------|---------|
|        |             |  |             |          |         |         |

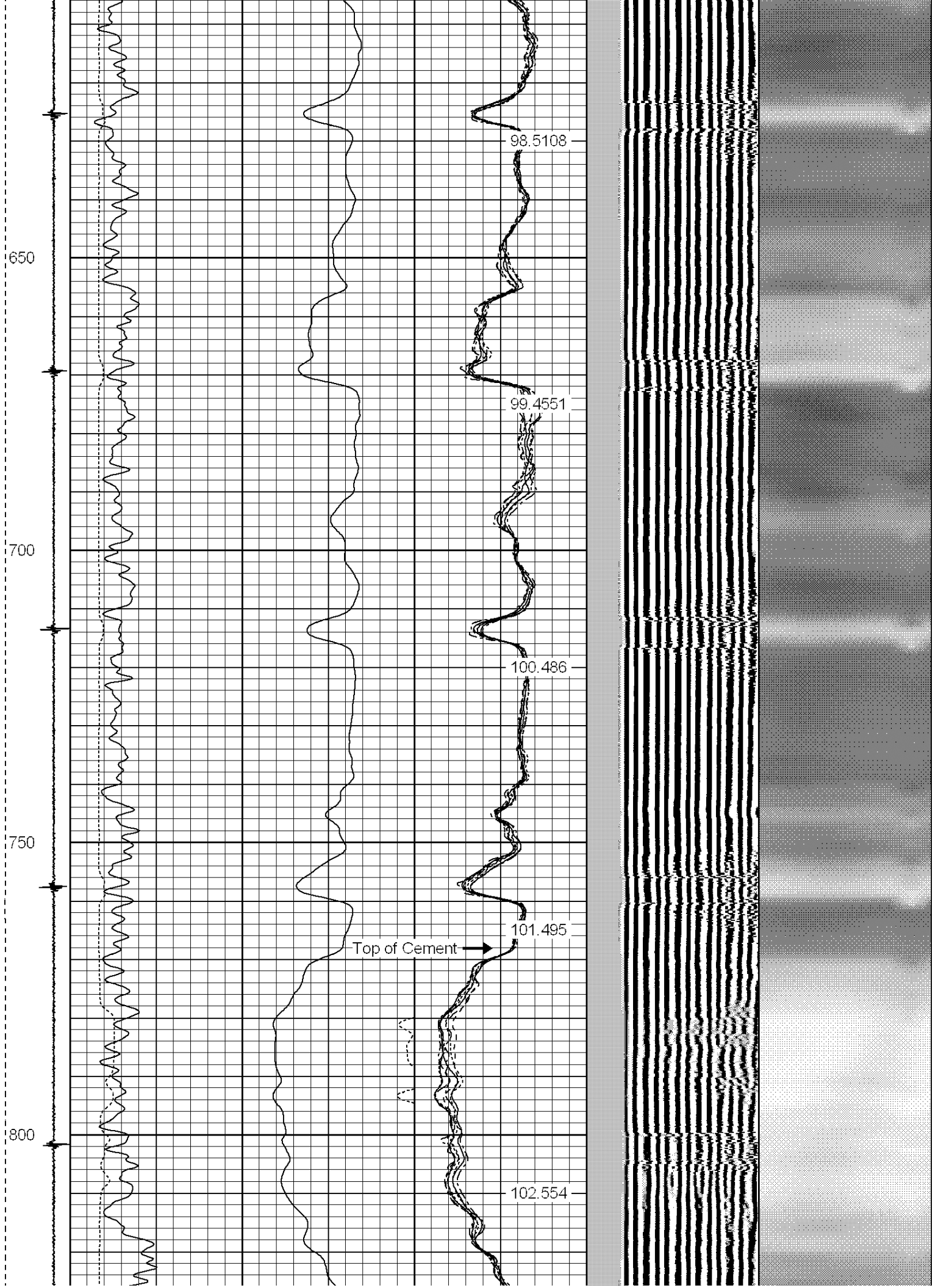
|   |       |  |  |      |      |       |
|---|-------|--|--|------|------|-------|
|   |       |  | PTS275   | 2.83 | 2.75 |       |
| HEADVOLT  | 16.08 |  |  |      |      |       |
| IntTemp   | 14.66 |  |  |      |      |       |
| WVF3FT  | 11.41 |  |  |      |      |       |
| WVFCAL  | 11.41 |  |  |      |      |       |
| WVFS1   | 11.41 |  |  |      |      |       |
| WVFS2   | 11.41 |  |  |      |      |       |
| WVFS3   | 11.41 |  |  |      |      |       |
| WVFS4   | 11.41 |  |  |      |      |       |
| WVFS5   | 11.41 |  |  |      |      |       |
| WVFS6   | 11.41 |  |  |      |      |       |
| WVFS7   | 11.41 |  |  |      |      |       |
| WVFS8   | 11.41 |  |  |      |      |       |
| WVF5FT  | 10.41 |  |  |      |      |       |
|   |       |  | RBT-Probe (Base)<br>Probe Radii Bond Tool with Digital Telemetry | 8.92 | 2.75 | 90.00 |
| CNLSC   | 6.00  |  |  |      |      |       |
| CNSSC   | 5.17  |  |  |      |      |       |
|   |       |  | CNT-Probe_B (275)<br>6 bow centralizer                           | 2.83 | 2.75 | 40.00 |
| CCL   | 3.64  |  |  |      |      |       |
|   |       |  |  |      |      |       |
|   |       |  | GR-Probe (275)<br>Probe 2.75"                                    | 4.33 | 2.75 | 30.00 |
| GR  | 0.90  |  |  |      |      |       |
| Dataset: 70 ranch 4-63-3-3225cdh.db: field/well/run1/pass4<br>Total Length: 18.91 ft<br>Total Weight: 160.00 lb<br>O.D. 2.75 in |       |  |  |      |      |       |

|          |     |     |     |           |     |   |            |     |   |         |     |     |     |      |   |            |     |
|----------|-----|-----|-----|-----------|-----|---|------------|-----|---|---------|-----|-----|-----|------|---|------------|-----|
| -5       | CCL | 1   | 200 | TT (usec) | 800 | 0 | AMP (mV)   | 100 | 0 | AMPS1   | 100 | 200 | VDL | 1200 | 1 | Cement Map | 8   |
| LSPD     |     |     | 0   | GR (GAPI) | 200 | 0 | AMPx5 (mV) | 20  | 0 | AMPS2   | 100 |     |     |      | 1 |            | 100 |
| (ft/min) |     |     | 200 | GR (GAPI) | 400 |   |            |     | 0 | AMPS4   | 100 |     |     |      |   |            |     |
| 0        |     | 250 |     |           |     |   |            |     | 0 | AMPS5   | 100 |     |     |      |   |            |     |
|          |     |     |     |           |     |   |            |     | 0 | AMPS6   | 100 |     |     |      |   |            |     |
|          |     |     |     |           |     |   |            |     | 0 | AMPS7   | 100 |     |     |      |   |            |     |
|          |     |     |     |           |     |   |            |     | 0 | AMPS8   | 100 |     |     |      |   |            |     |
|          |     |     |     |           |     |   |            |     |   | IntTemp |     |     |     |      |   |            |     |
|          |     |     |     |           |     |   |            |     |   | (degF)  |     |     |     |      |   |            |     |

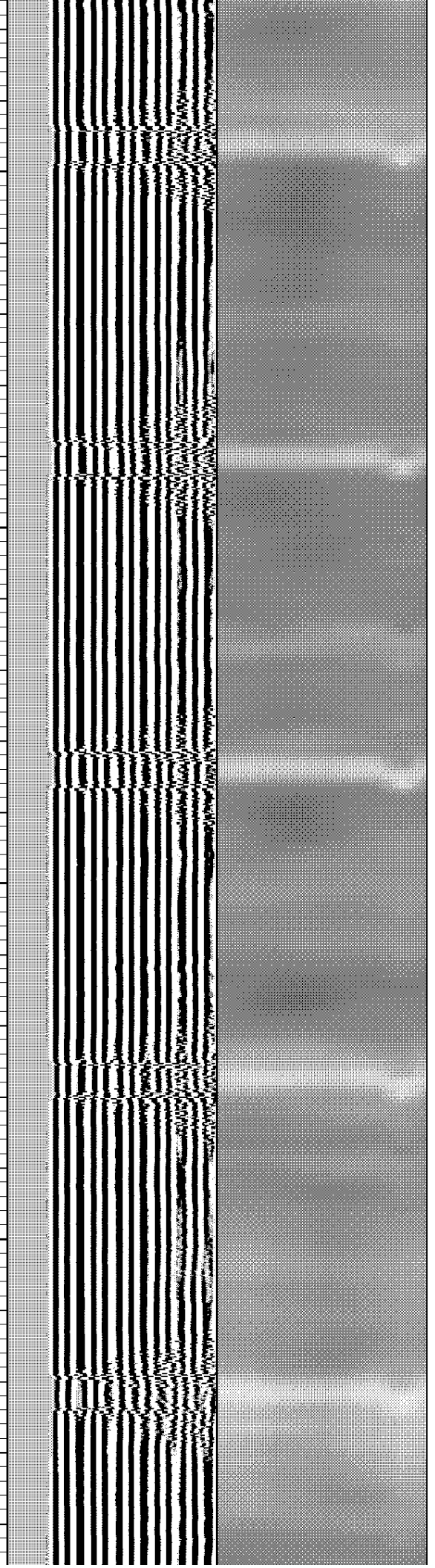
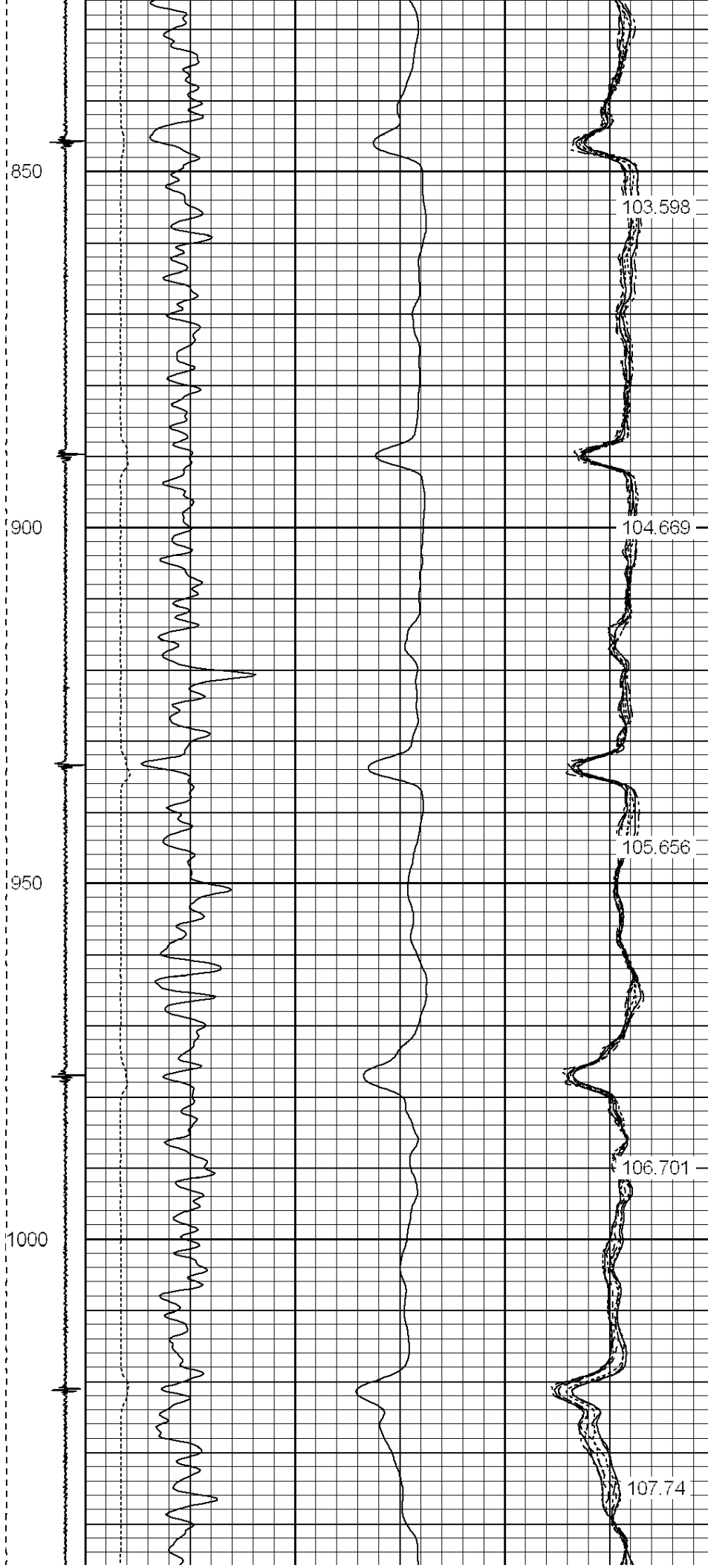


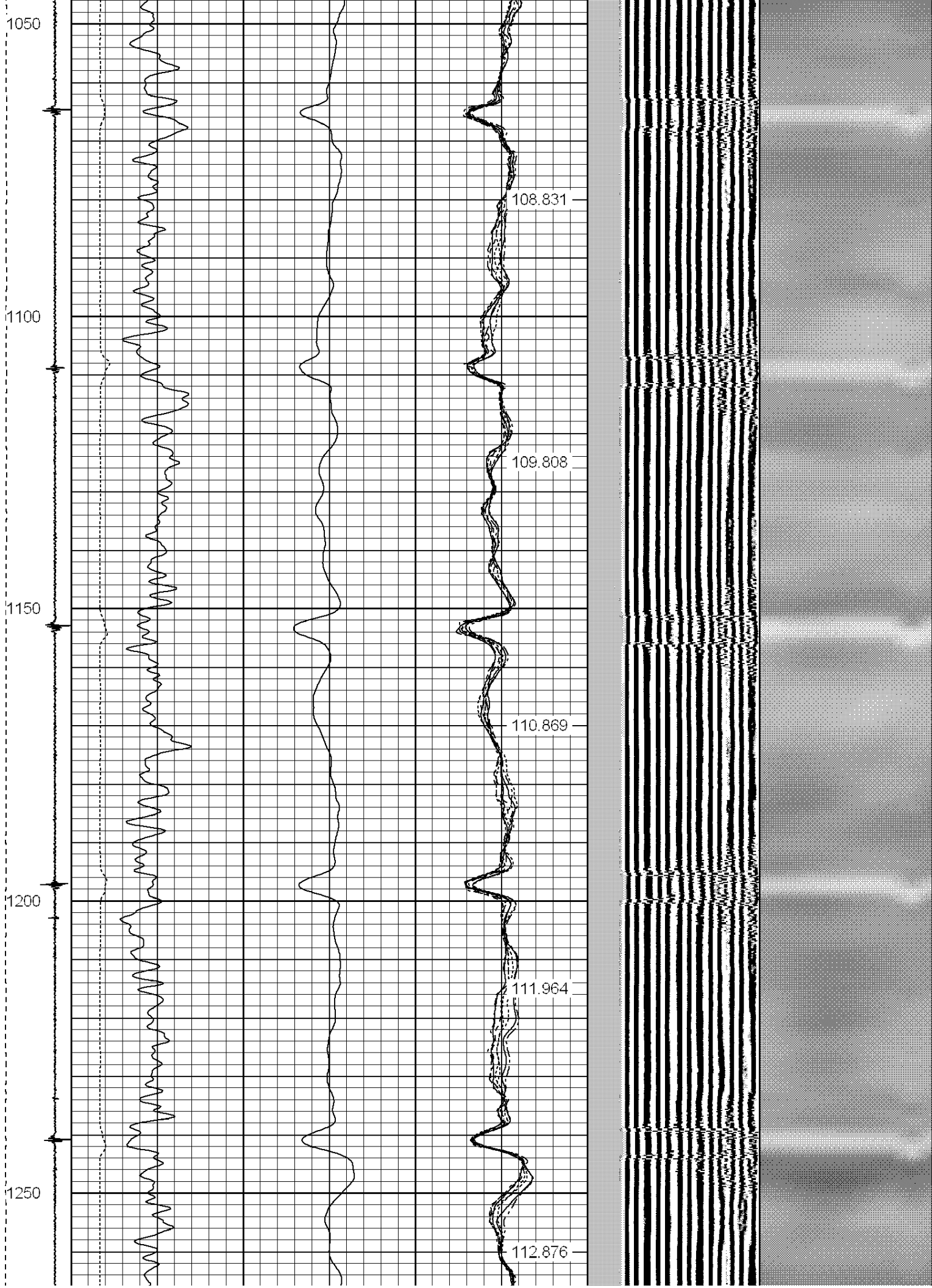














1300

1350

1400

1450

113.954

114.93

115.934

116.959

117.979

1500

1550

1600

1650

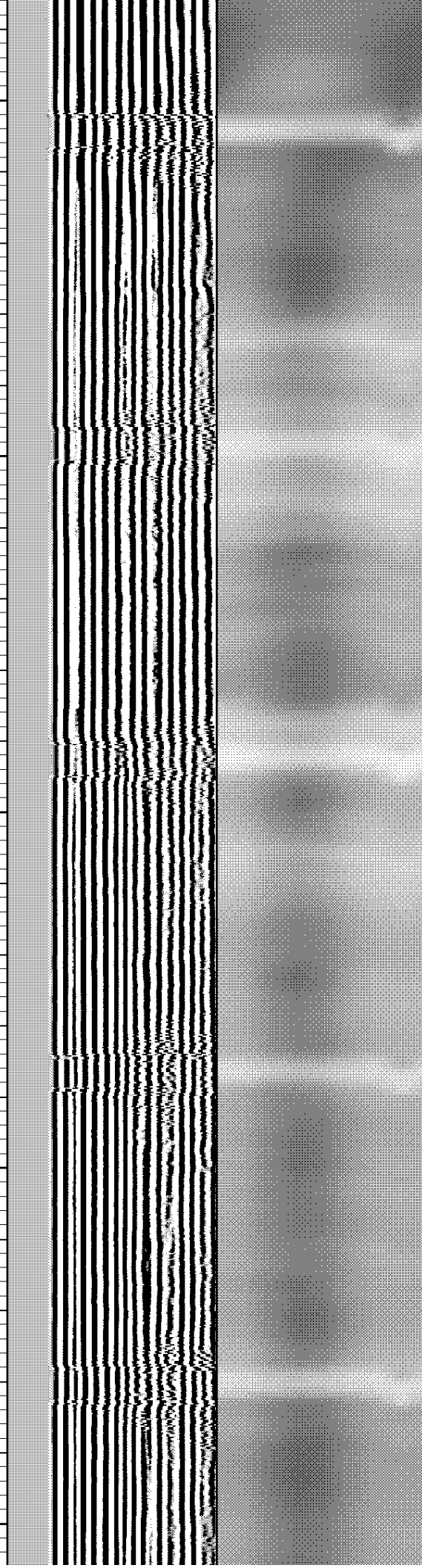
1700

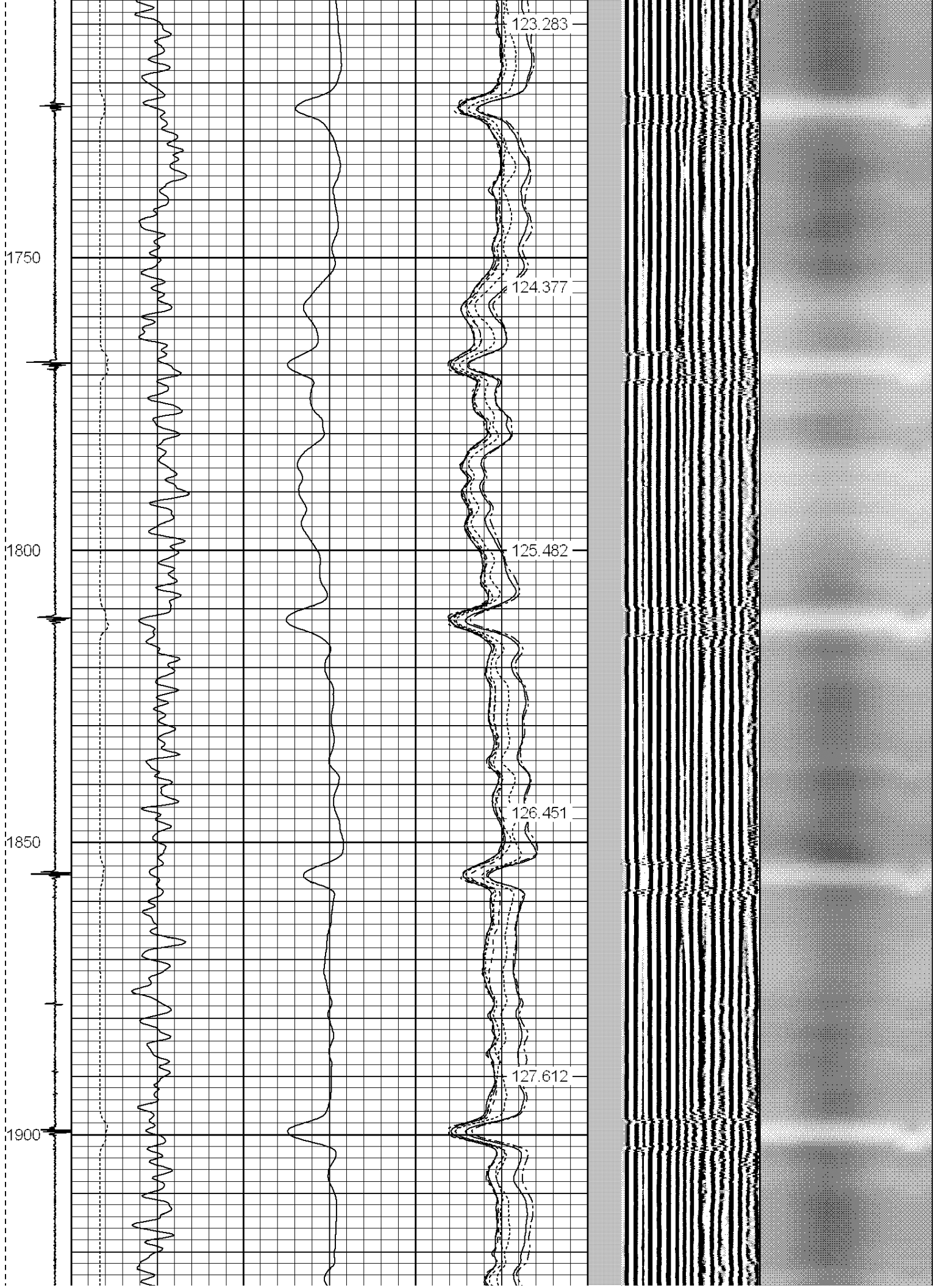
119.012

120.042

121.217

122.172



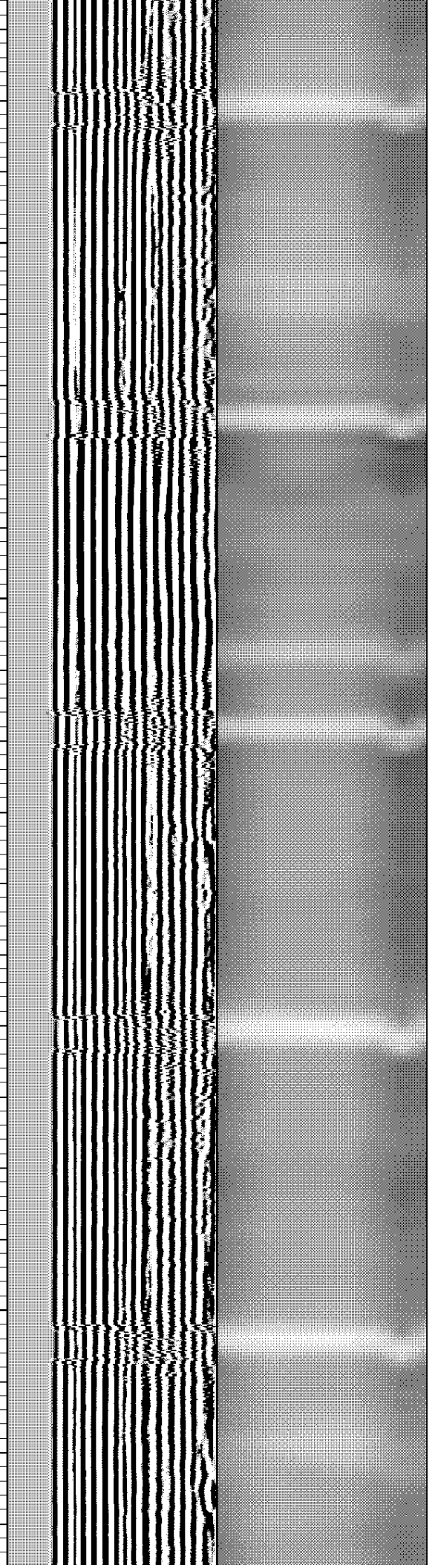
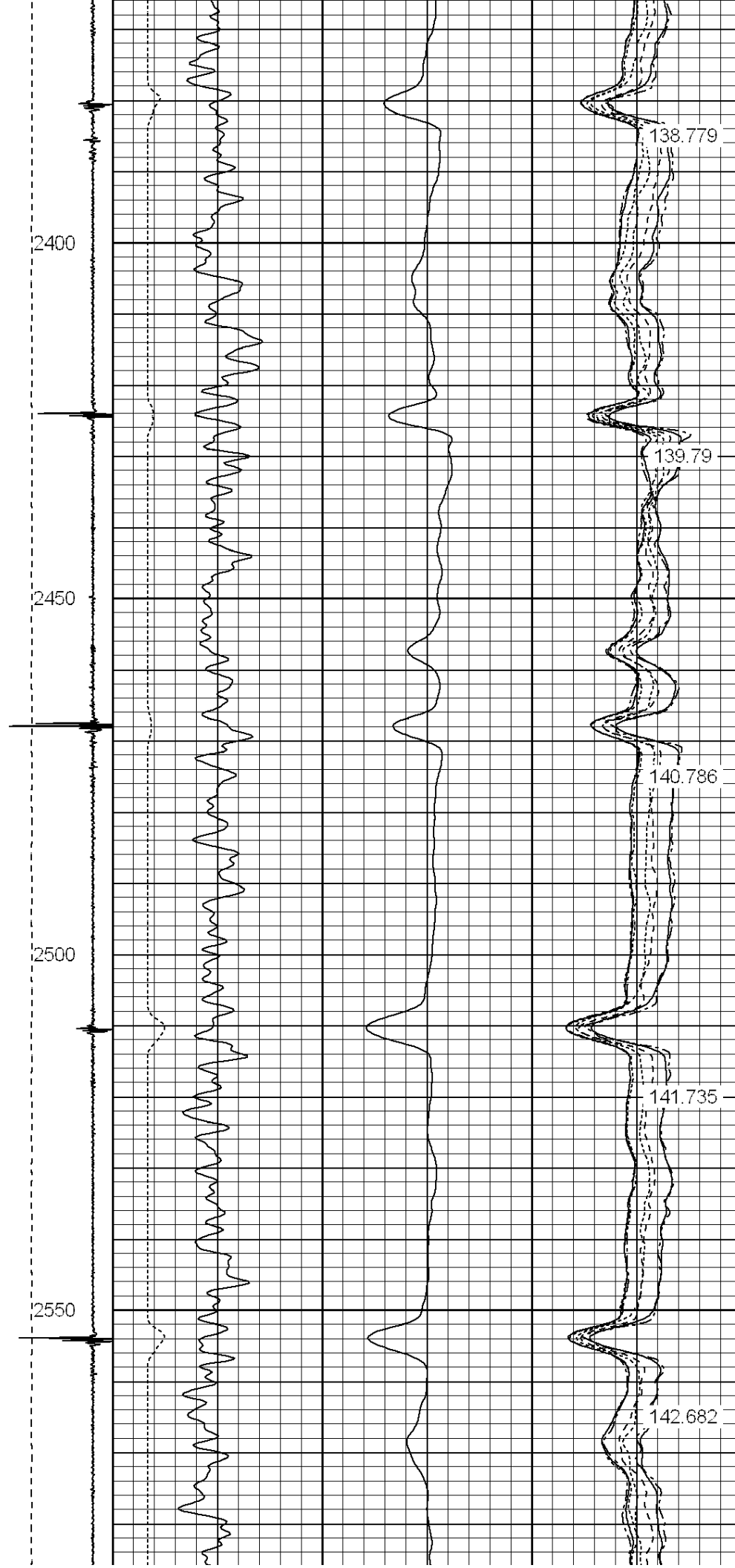


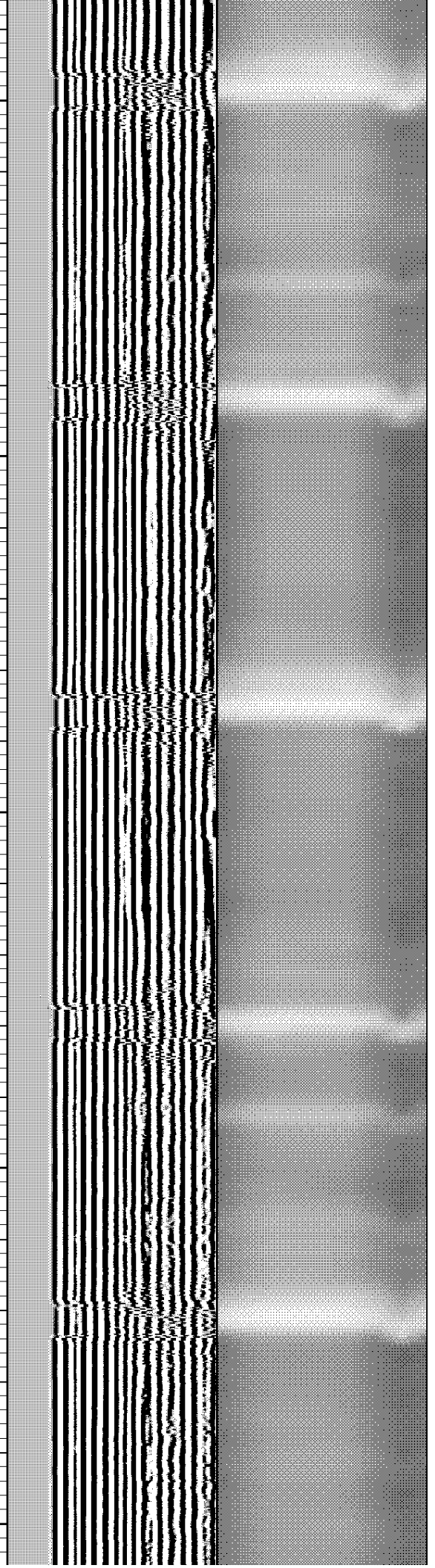
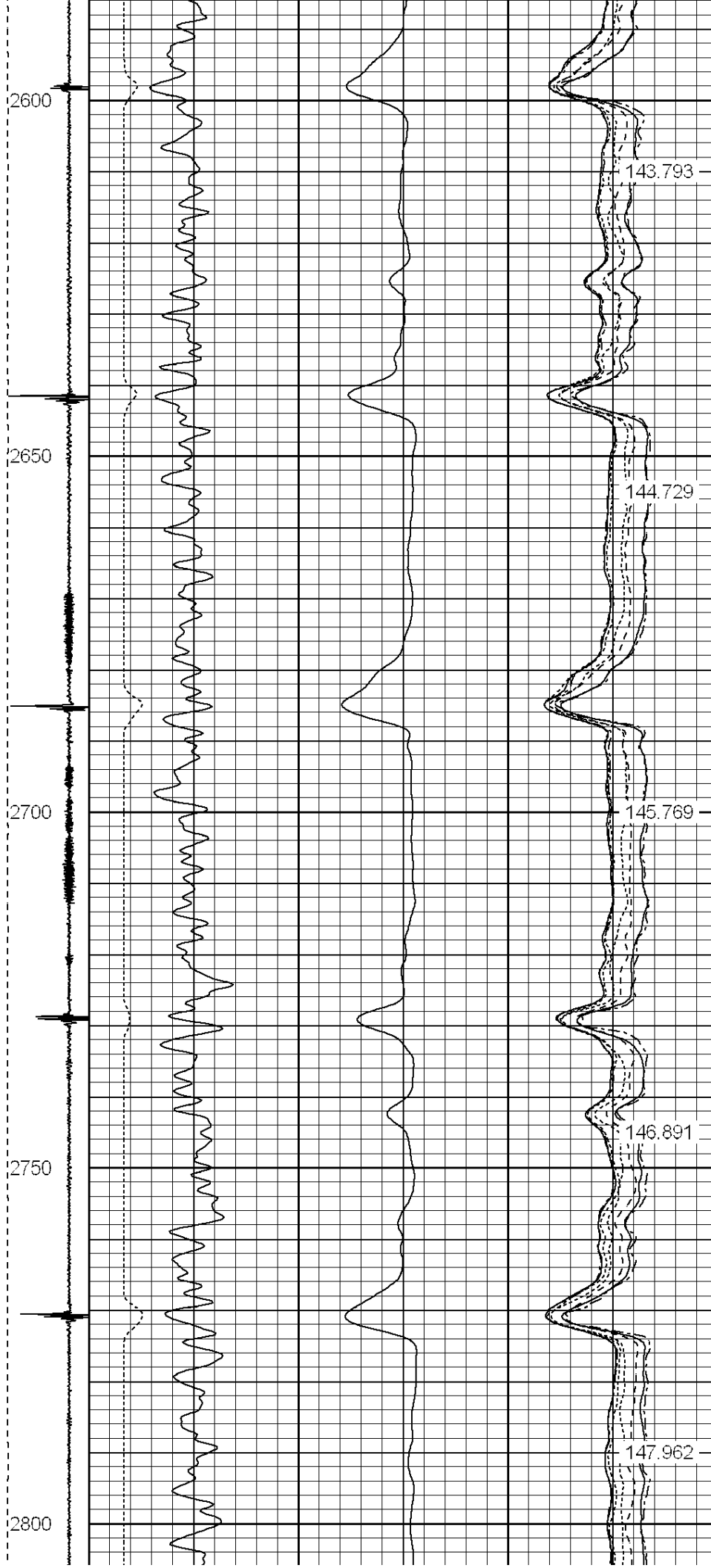




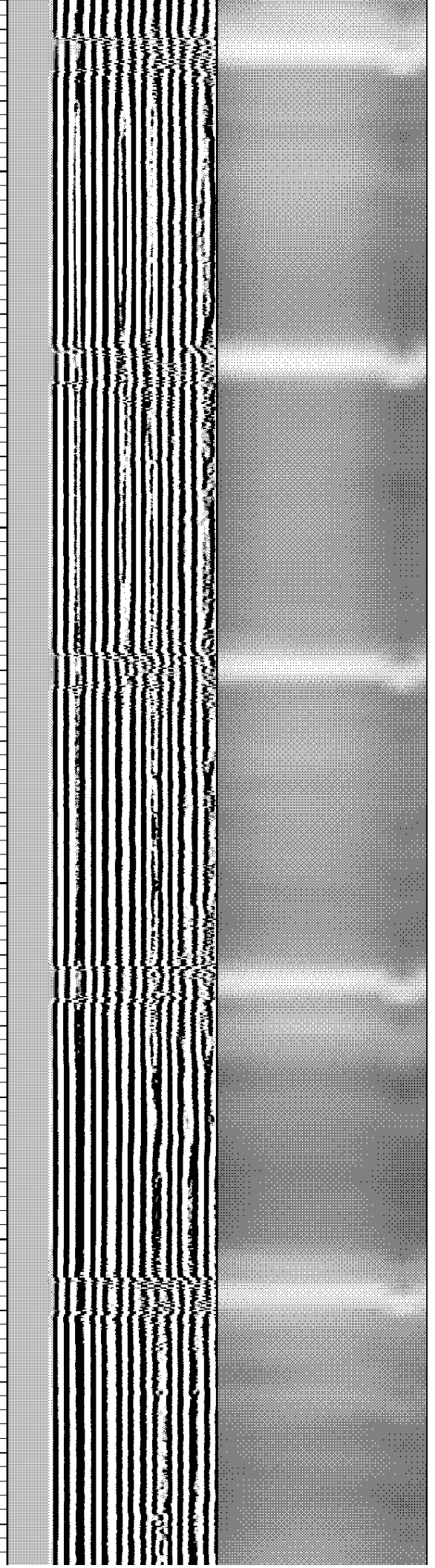
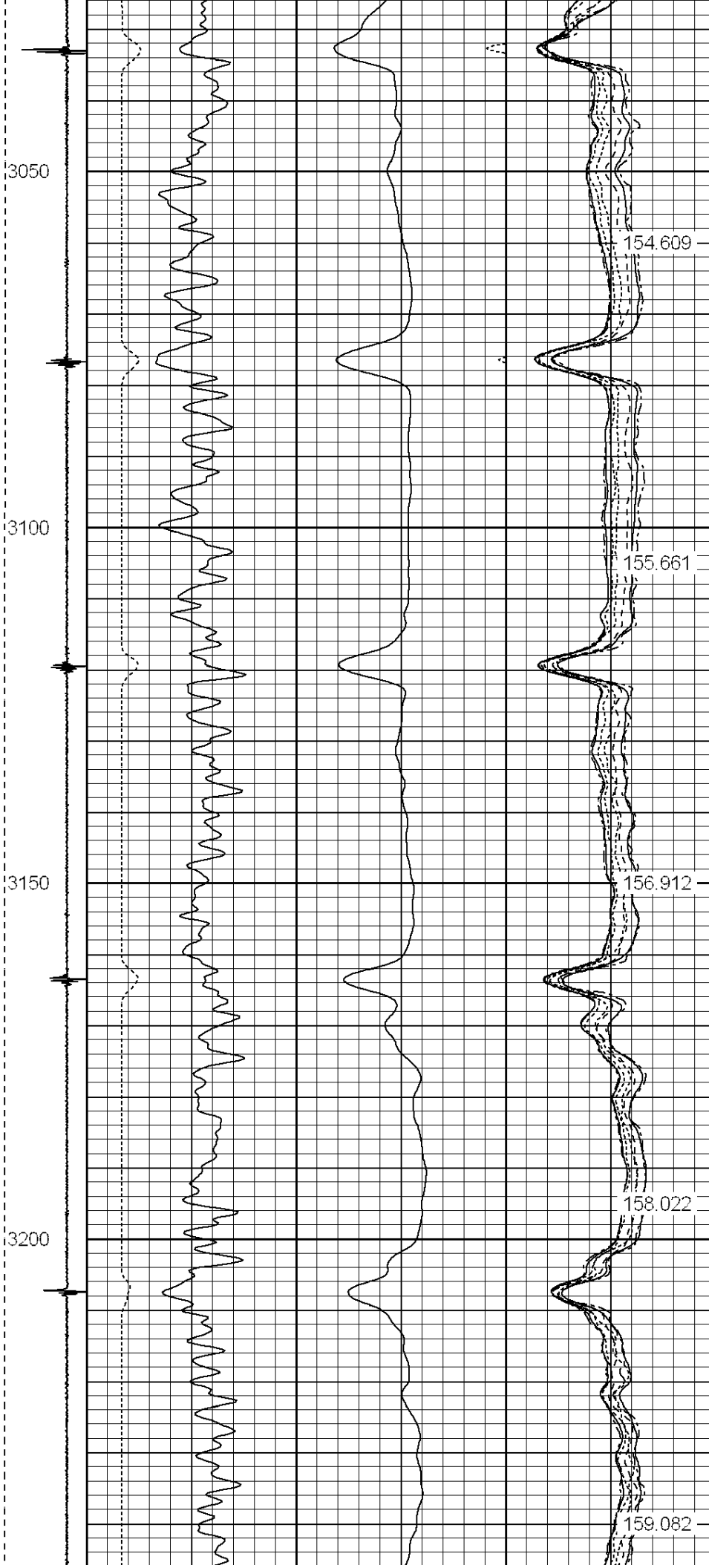




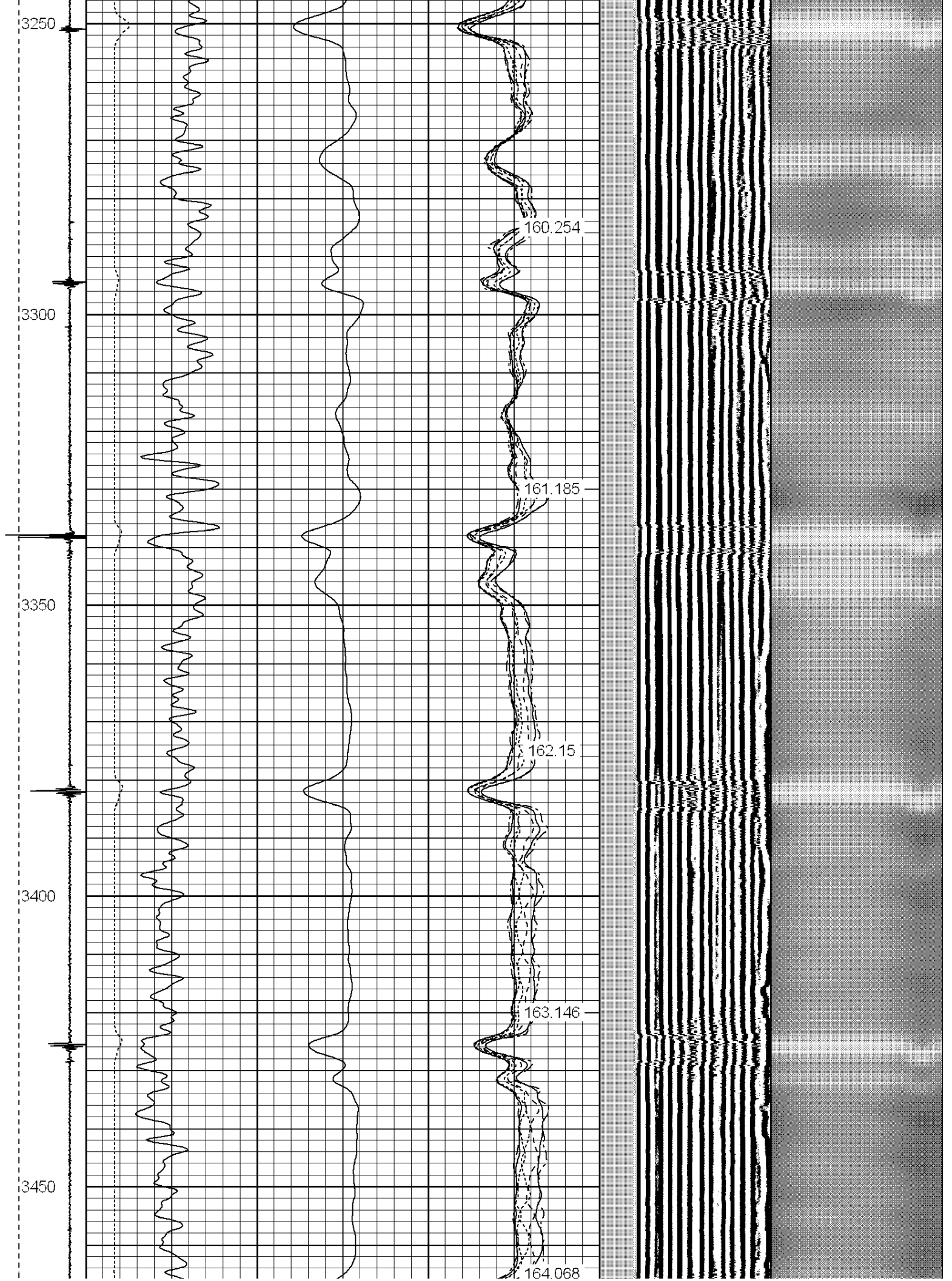














3500

3550

3600

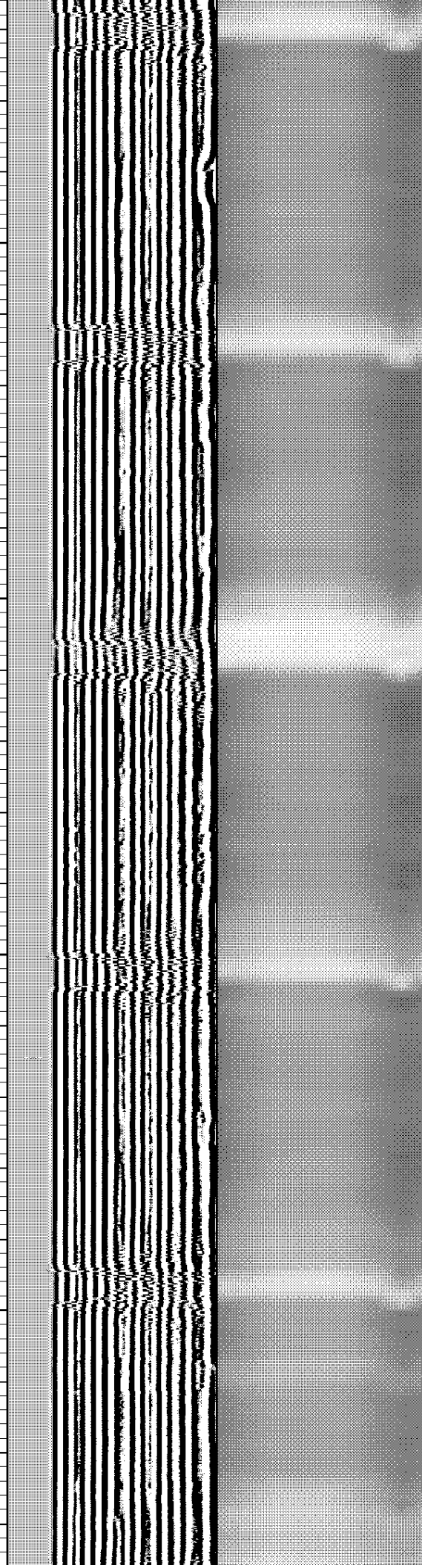
3650

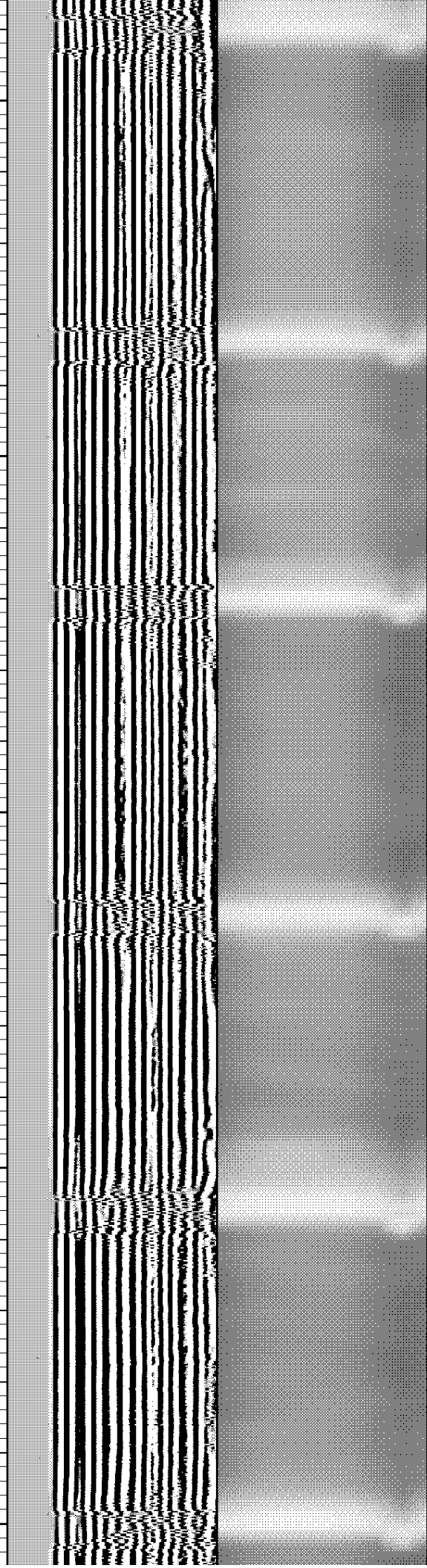
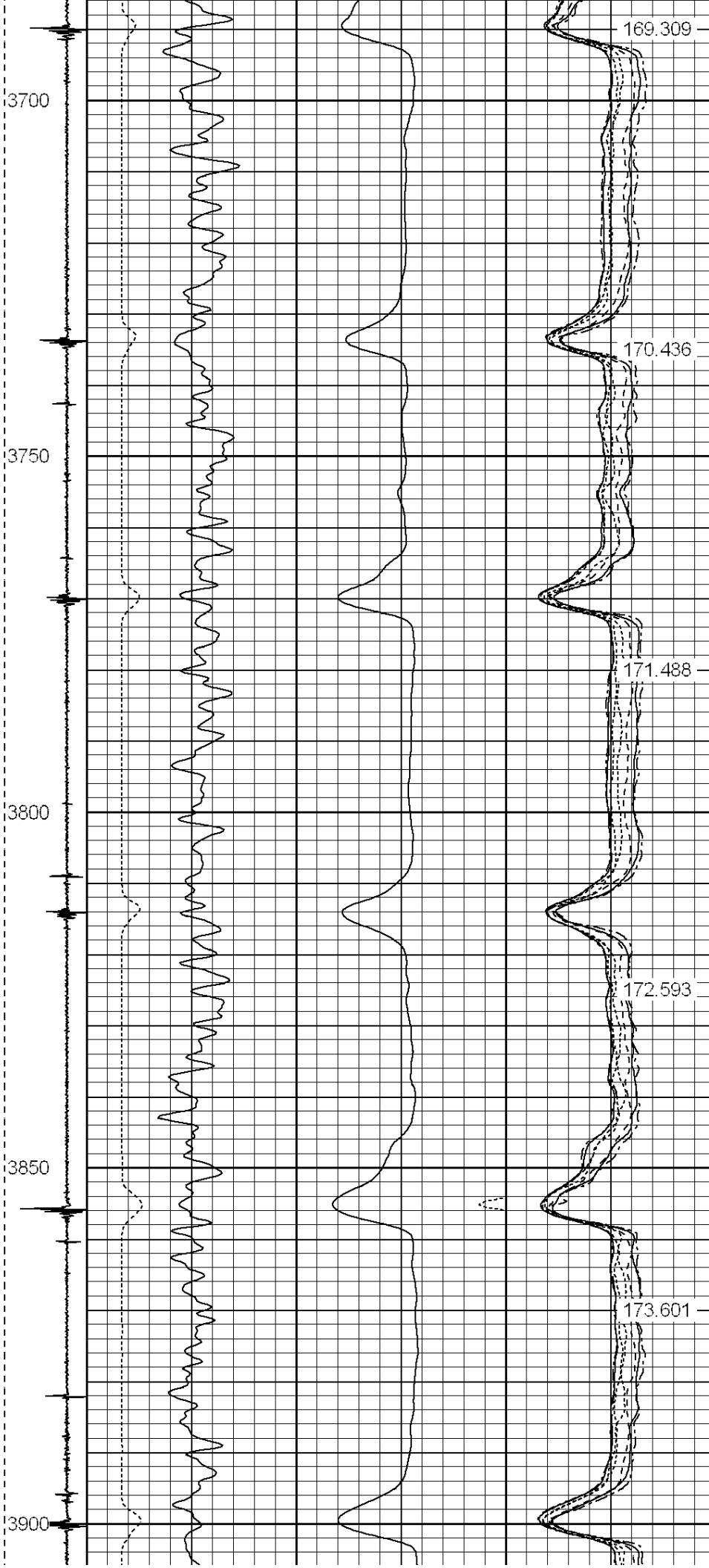
165.126

166.183

167.17

168.27





3950

4000

4050

4100

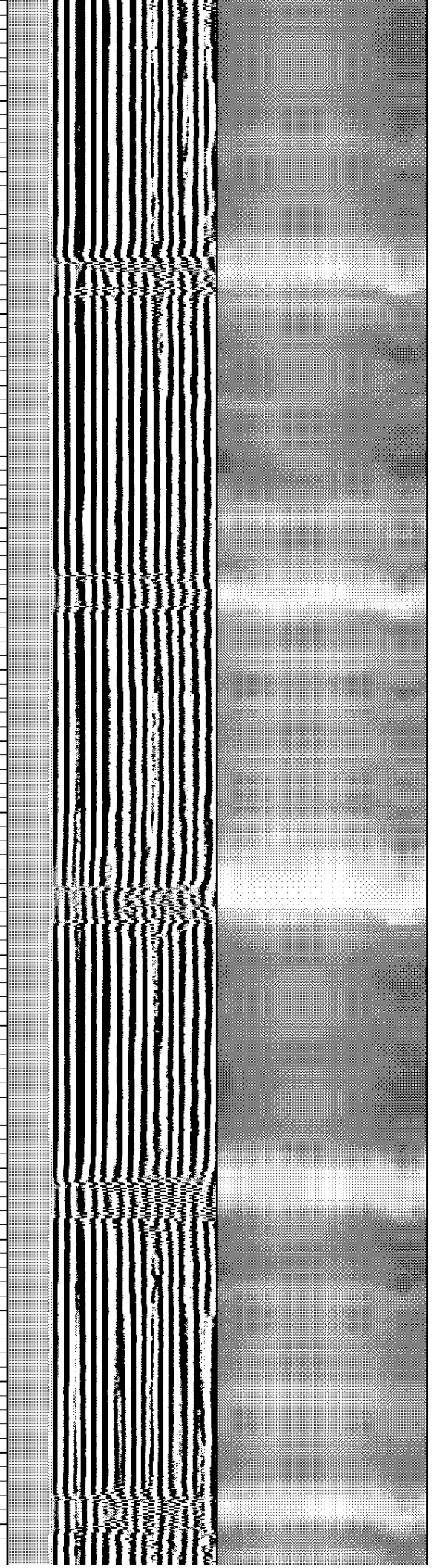
174.635

175.745

176.728

177.917

179.064



4150

4200

4250

4300

180.142

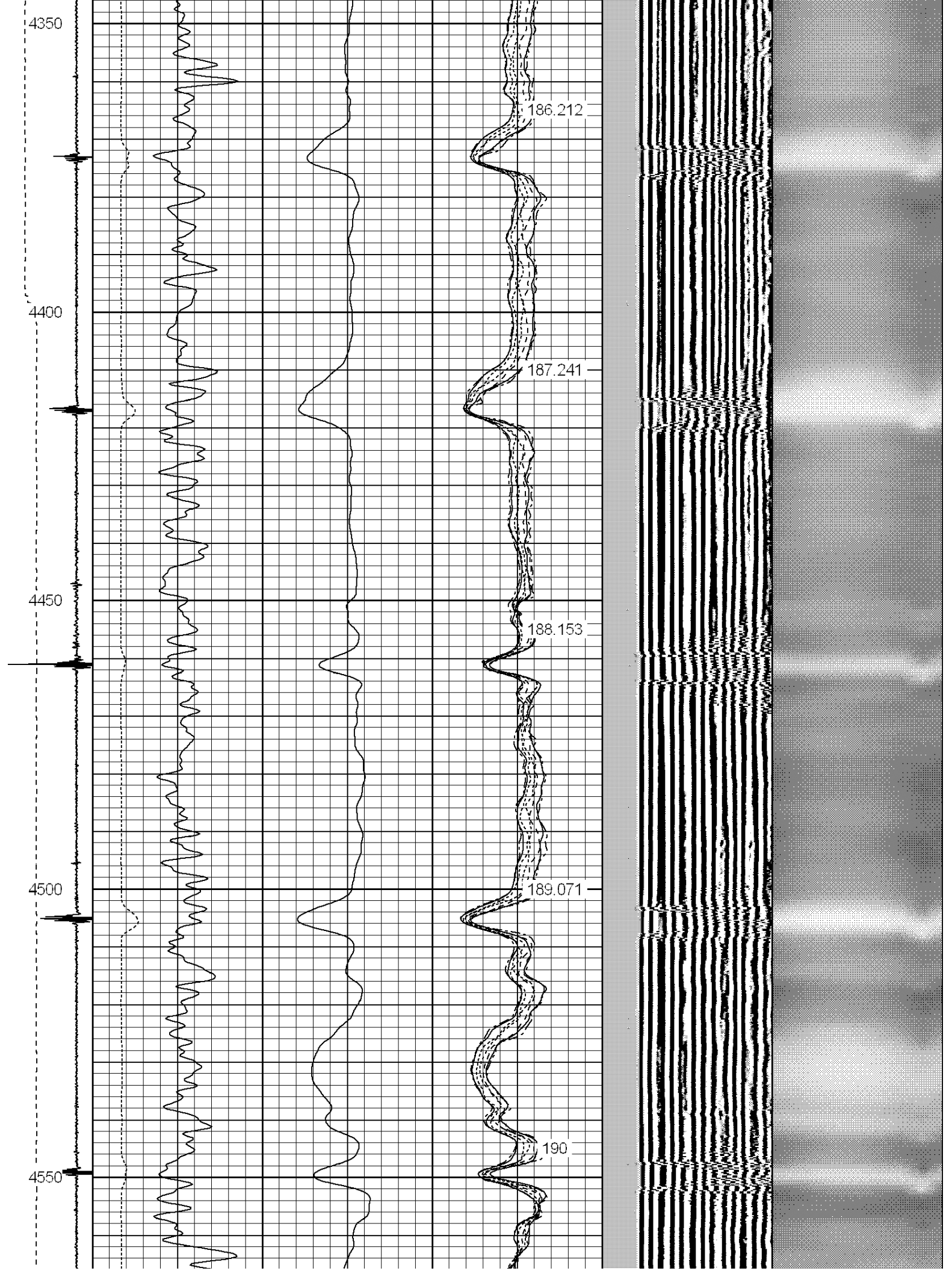
181.344

182.443

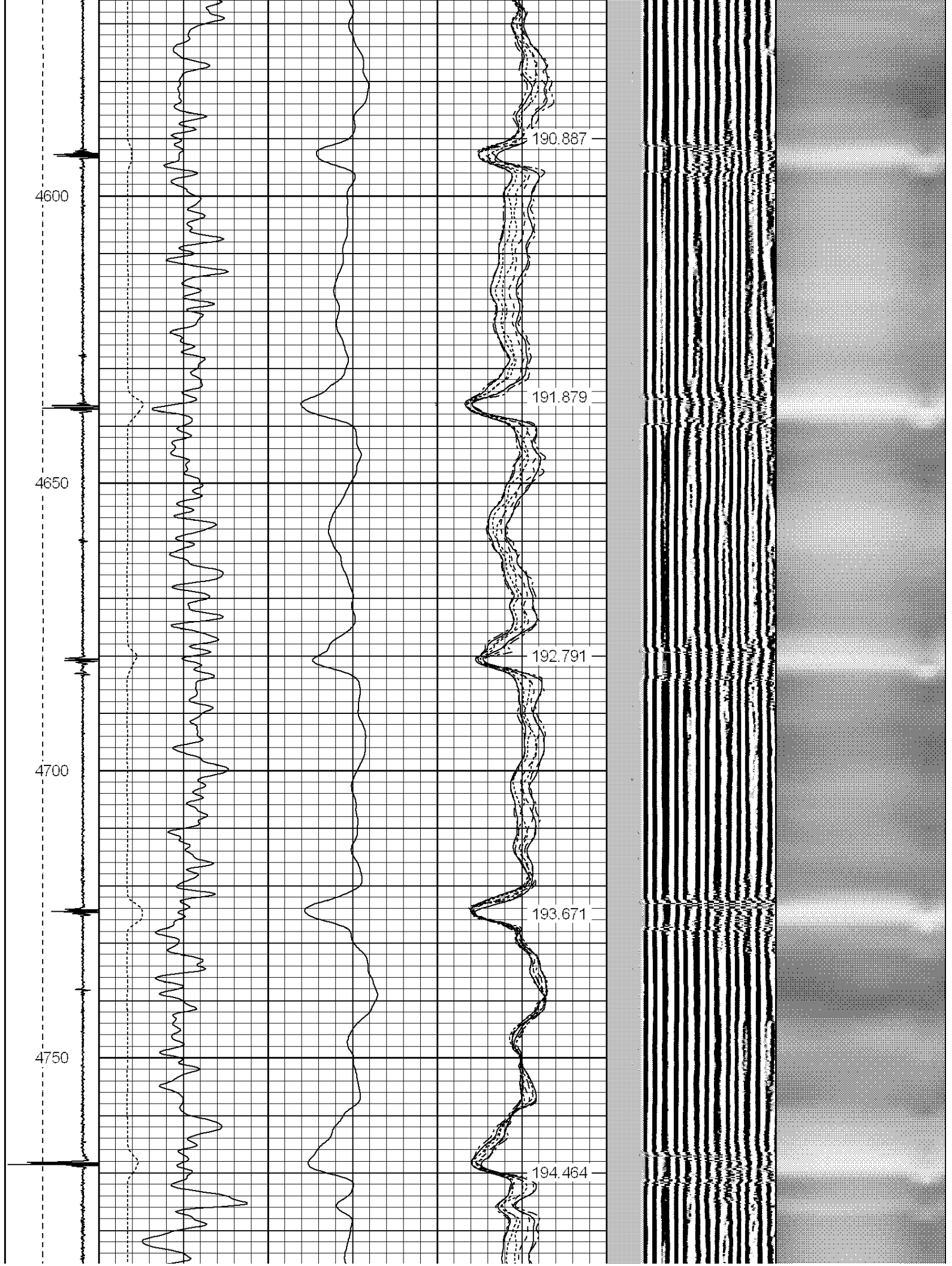
183.628

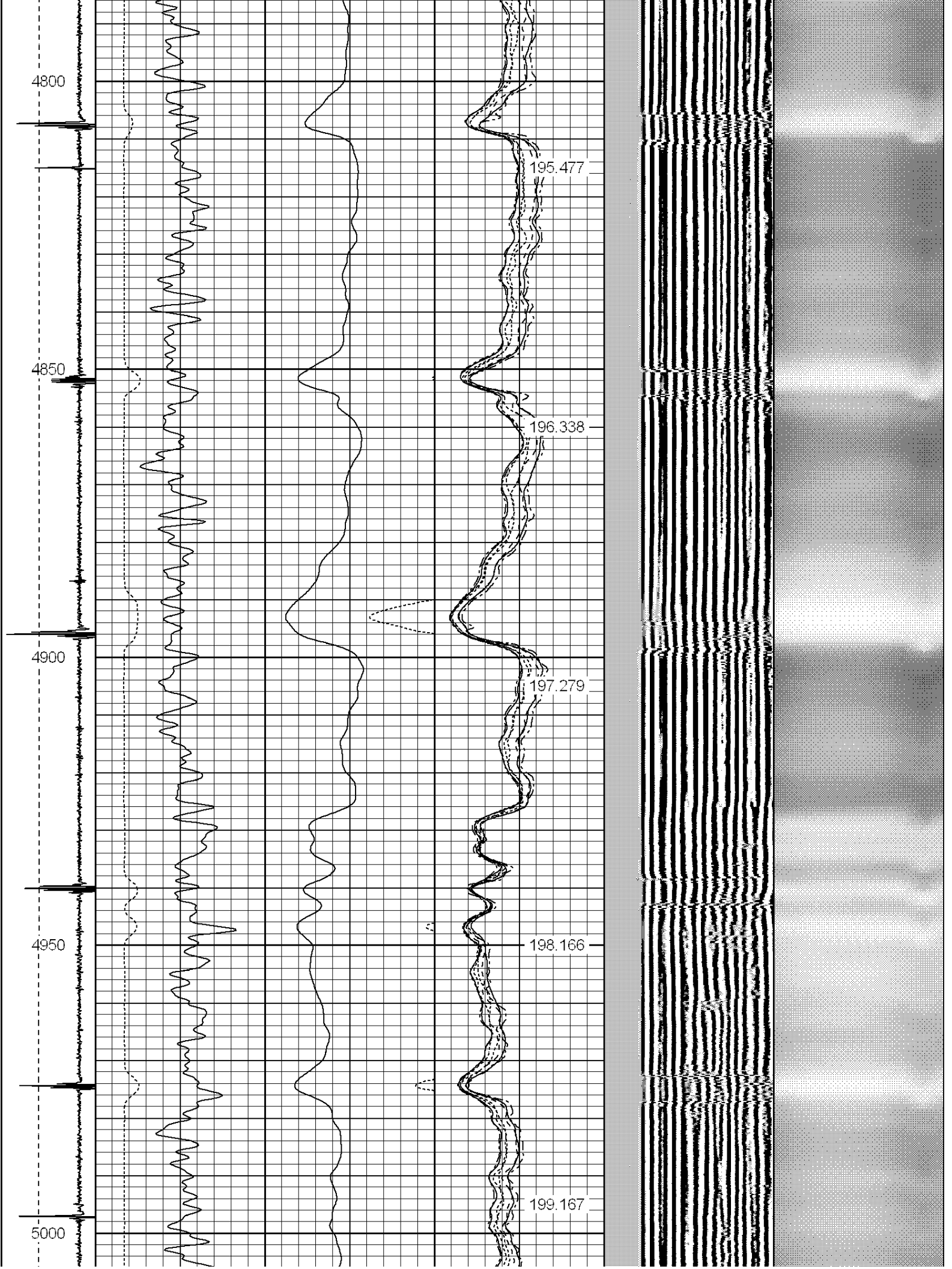
184.812

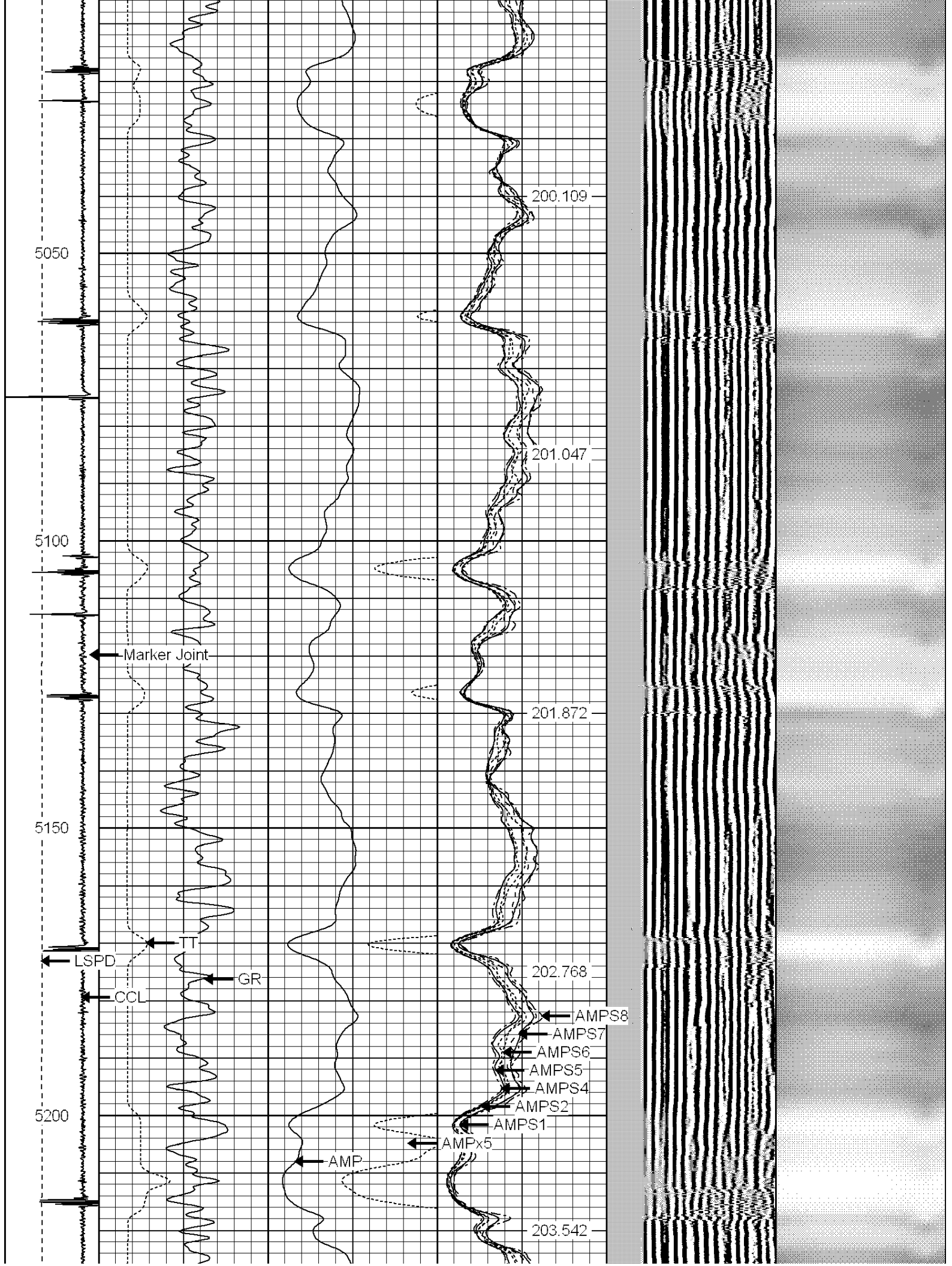












5250

5300

5350

5400

204.284

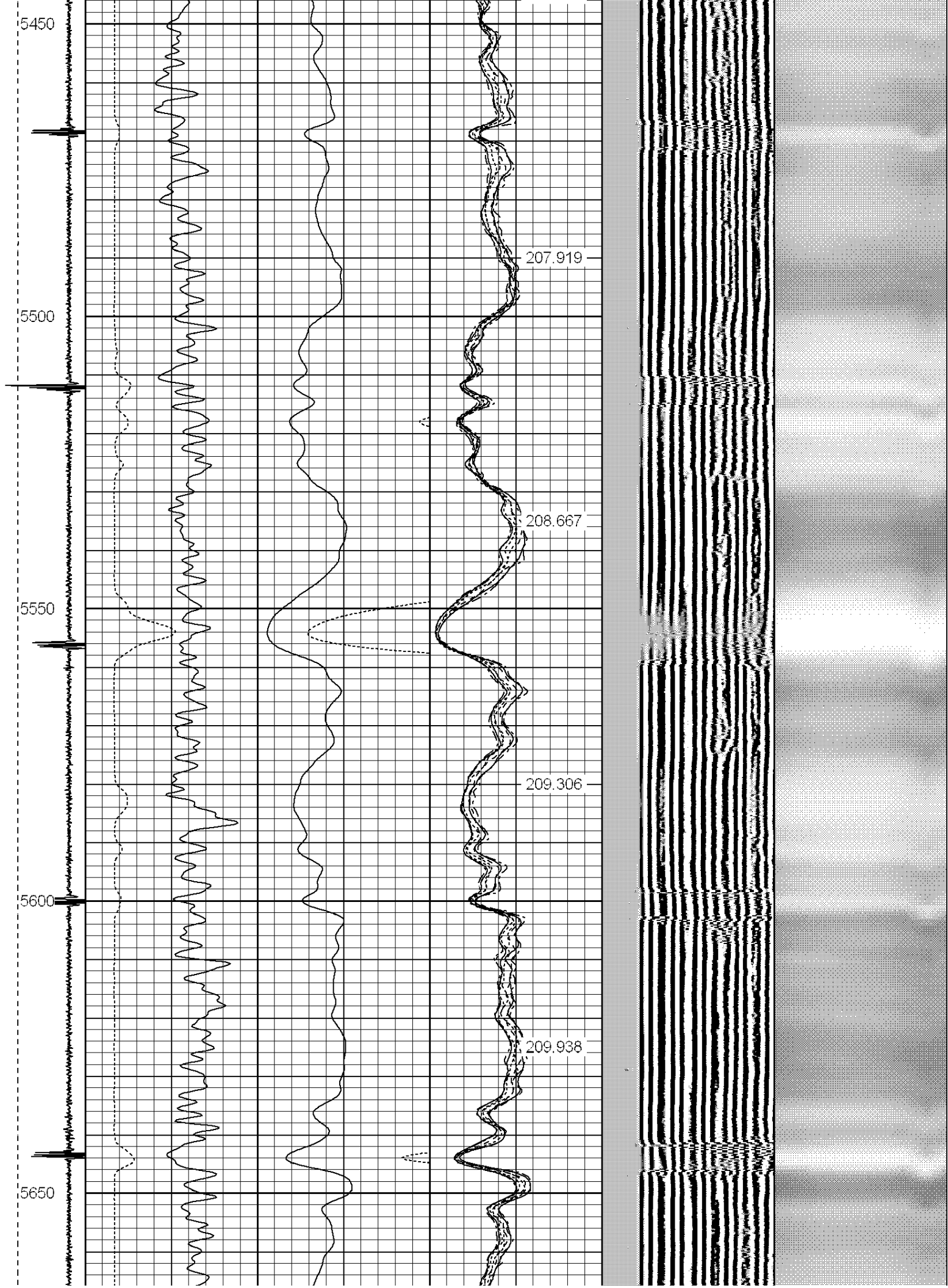
204.937

205.657

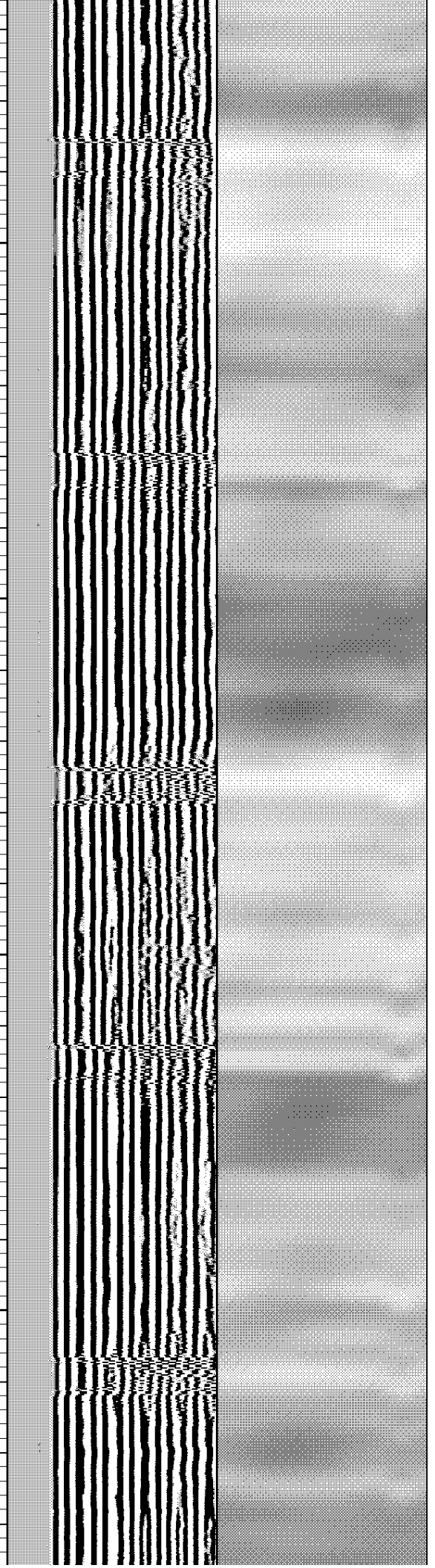
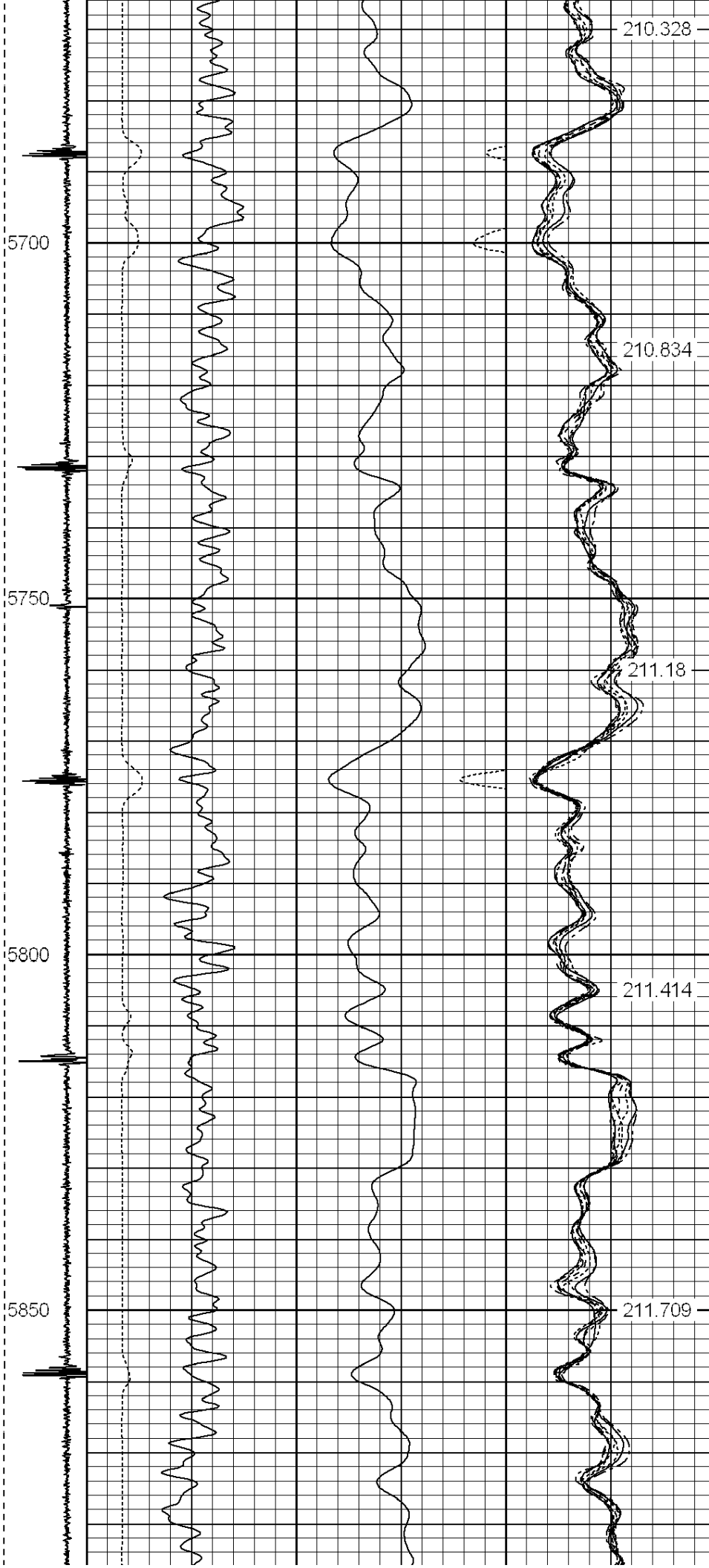
206.368

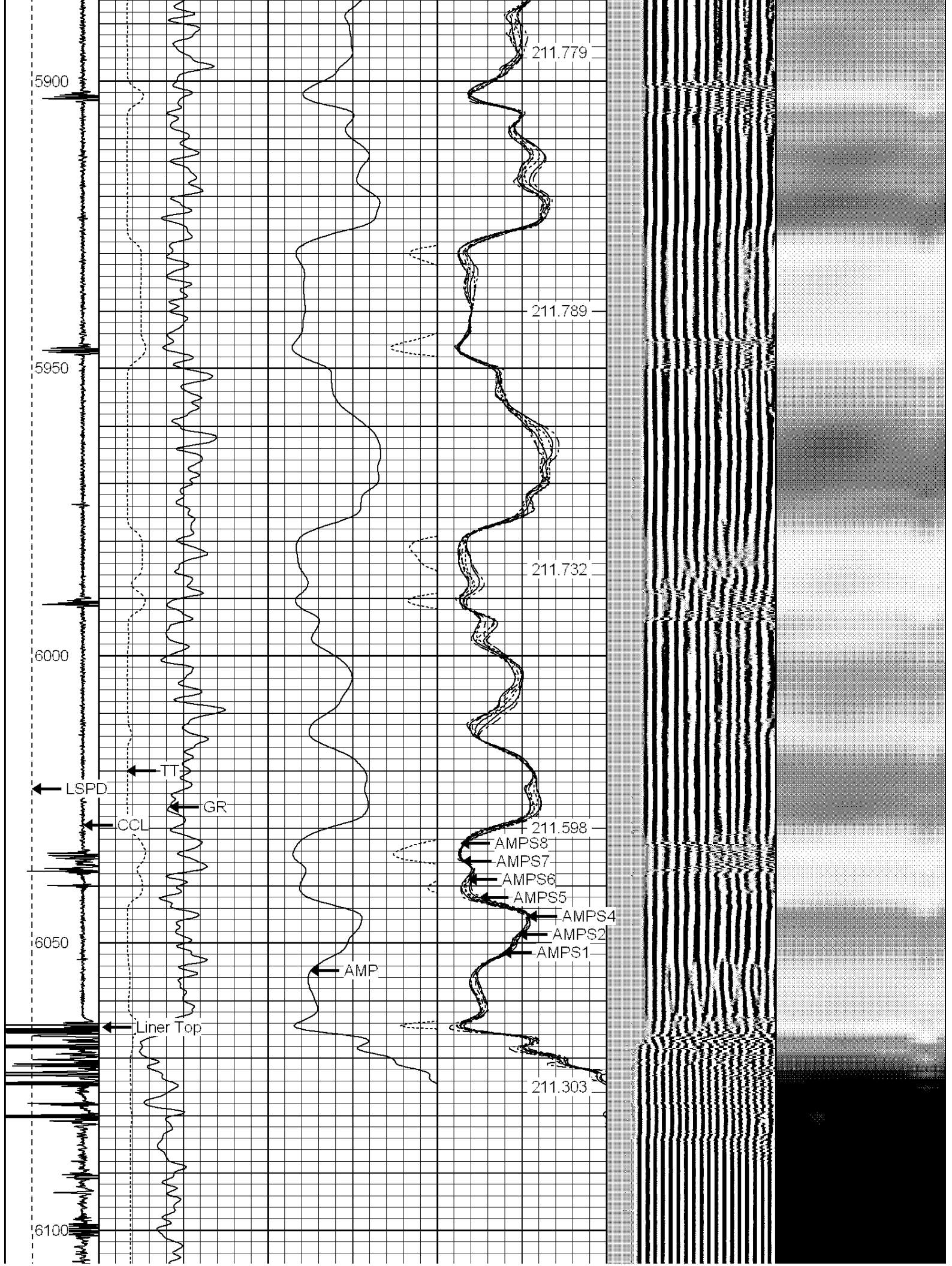
207.074

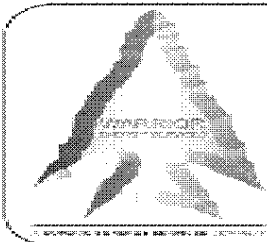
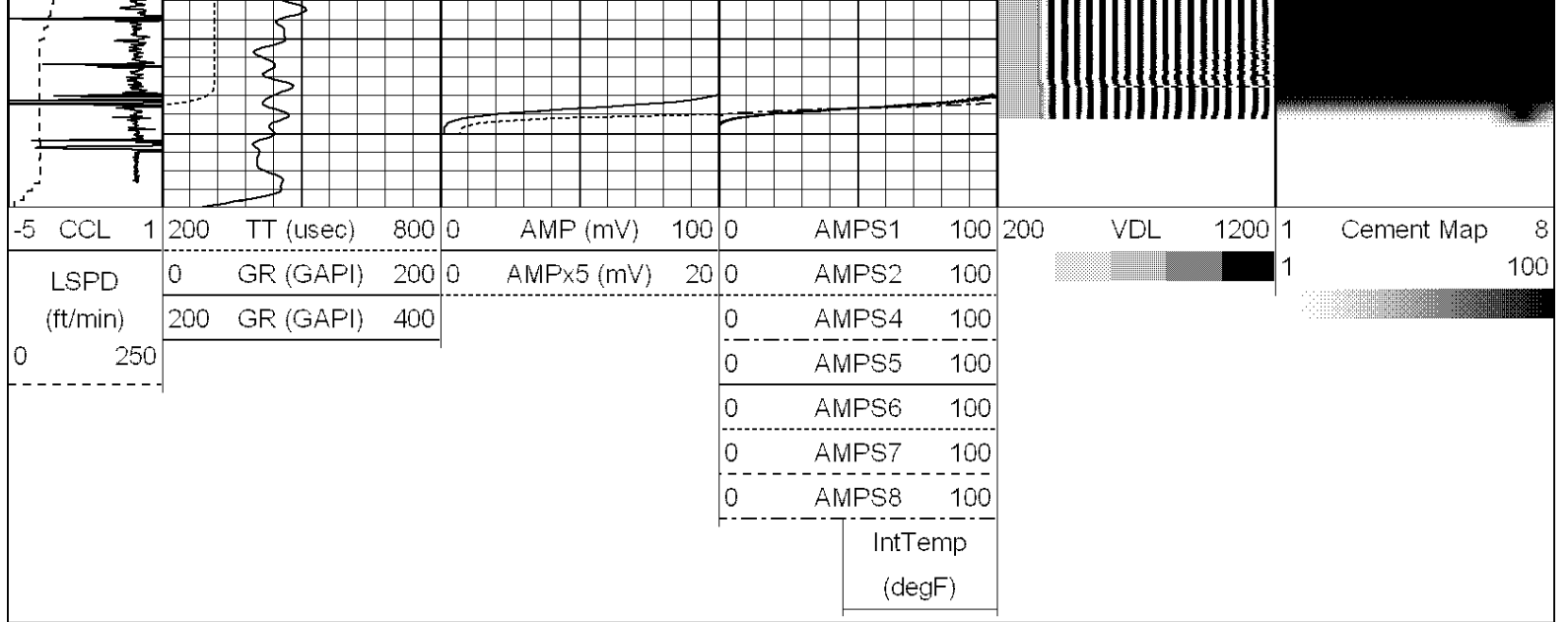












**WARRIOR**  
ENERGY SERVICES

Company Bill Barrett Corporation  
 Well 70 Ranch 04-63-3225CDH  
 Field Wattenberg  
 County Weld  
 State Colorado