



DDC

RM-13951

5":100' - TVD

12/15/2013 1:05:05 AM

Oper. Company: Noble Energy Inc
Country: United States
State / Province: Colorado
County / Parish: Weld
Started: 12/10/2013 06:00 AM

API/UWI: 05-123-37489
Field: Wildcat
Well: Timbro State LD16-65HN
Rig: H&P #326
Ended: 12/14/2013 08:00 PM

Personnel

Day Hand: Chris Abbott
Night Hand: Kirk Kissack
Comp. Emp:

Location

Latitude: 40° 45' 12.312 N
Longitude: 103° 51' 38.844 W
Elev. GL: 4759
Elev. DF: 30
Elev. KB: 4789

Hole Data

Size	From	To
13 3/4	0	1218
8 3/4	1218	6146
6 1/8	6146	9702

Casing Data

Size	From	To
9 5/8	0	1208
7	1208	6136
4 1/2	6136	0

Bit Sizes

Size	From	To
------	------	----

Mud Data

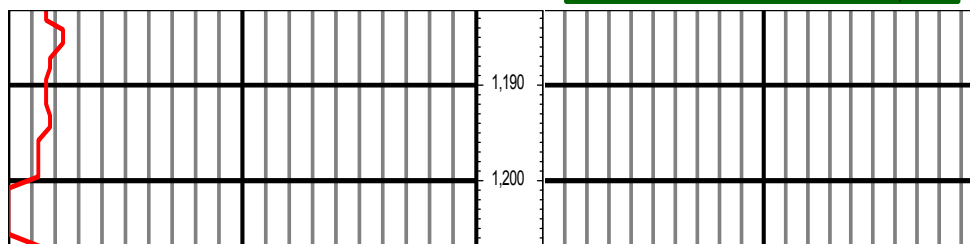
Type	Weight	Density	Viscosity	Rm	Rmf	Rmc	From	To
LSND	10.2	0	38				0	0

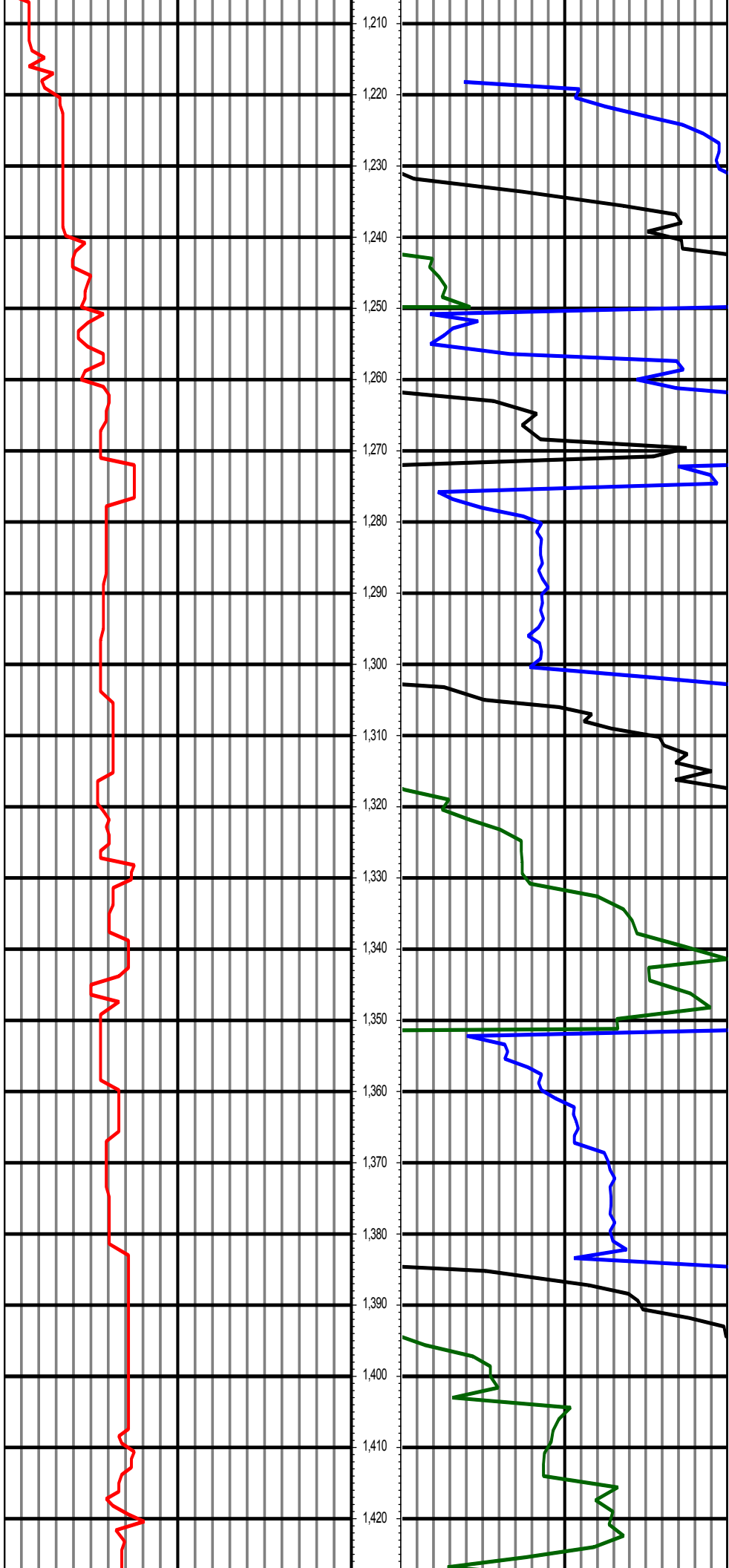
Tool Run Data

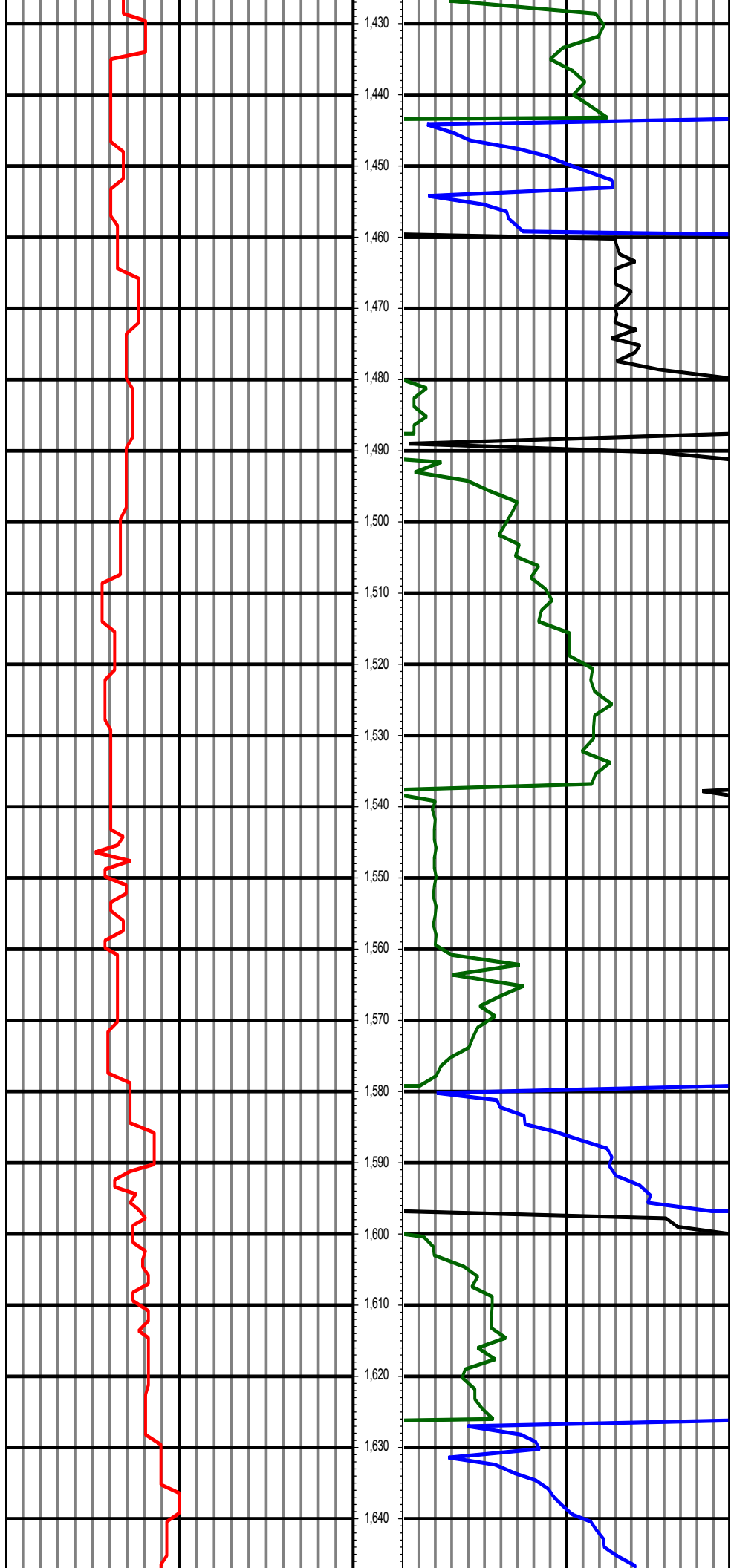
Serial Number	Gamma Offset	Resist. Offset	Start Time	Start Depth	End Time	End Depth
2544	36	0	12/10/2013 6:00:28 AM	1218	12/11/2013 7:30:28 AM	5140
2544	44	0	12/11/2013 9:00:16 AM	5140	12/12/2013 5:00:16 AM	6146
2544	51	0	12/13/2013 5:30:45 AM	6146	12/14/2013 8:00:45 PM	9702

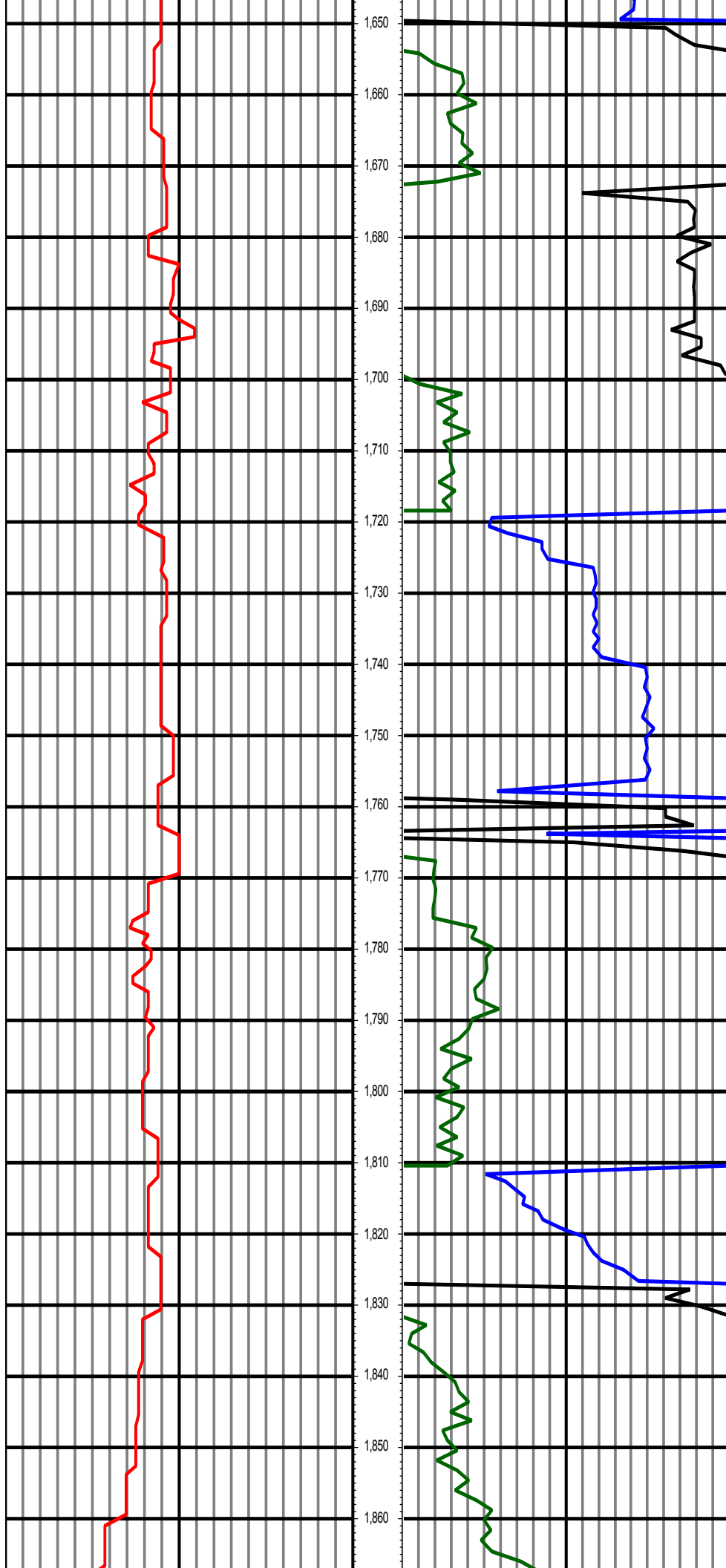
All interpretations are opinions based on inferences from electrical or other measurements and we cannot and do not guarantee the accuracy or correctness of any interpretation, and we shall not except in the case of gross or willful negligence on our part, be liable or responsible for any loss, cost damages or expenses incurred or sustained by anyone resulting from an interpretation made by any of our officers, agents, or employees.

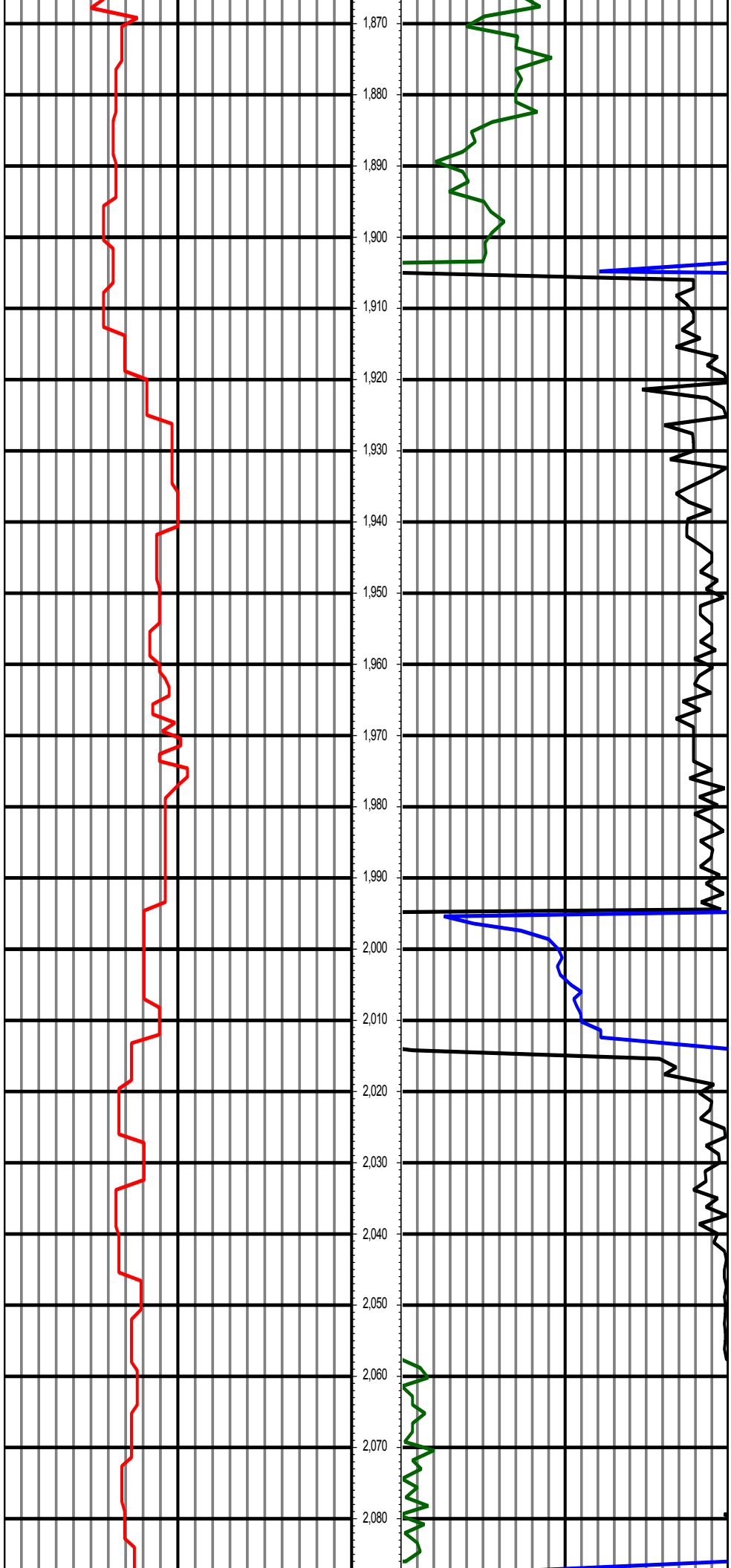
31.00 Counts(mG) 143.00 TVD 0.00 ROP(FT/HR) 463.55
143.00 2 255.00 FT 463.55 2 927.09
927.09 3 1,390.64

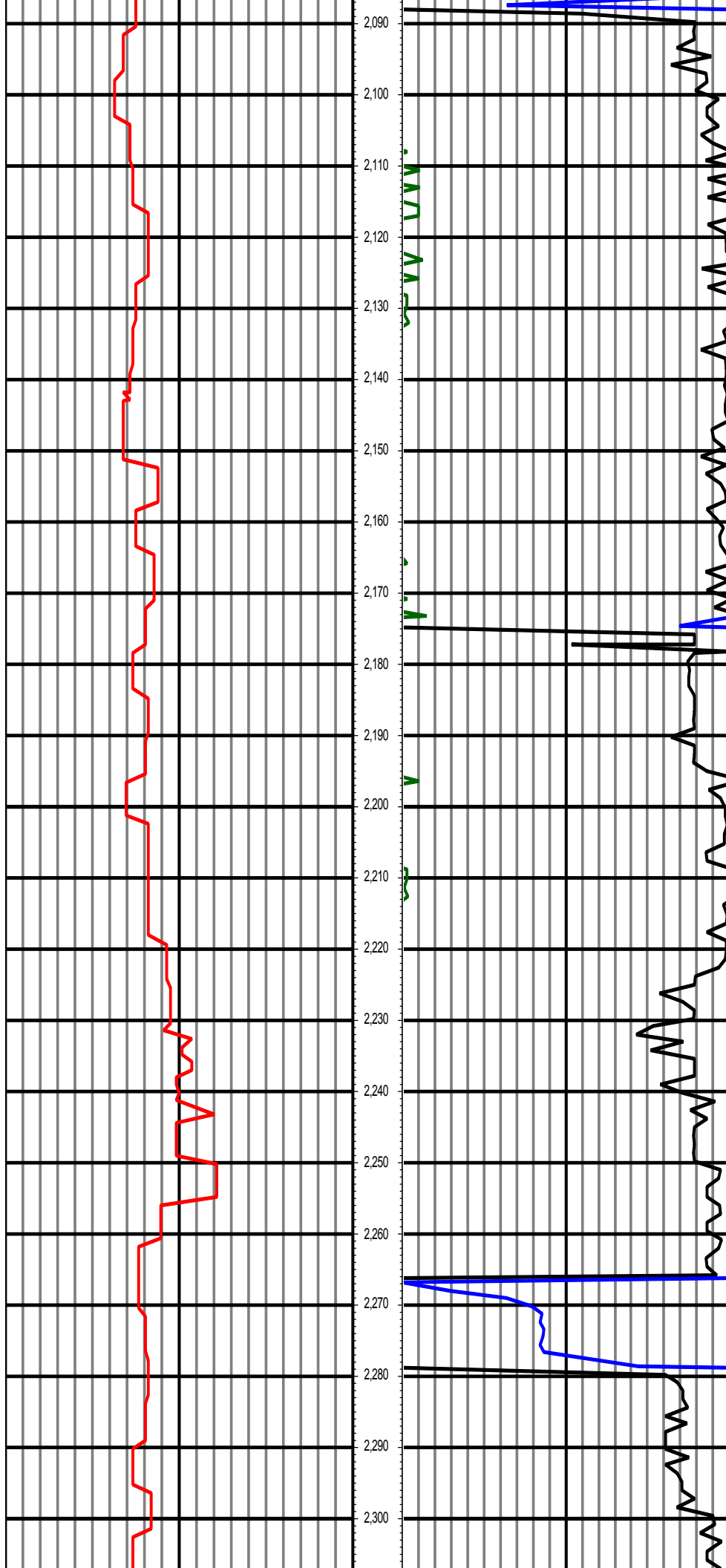


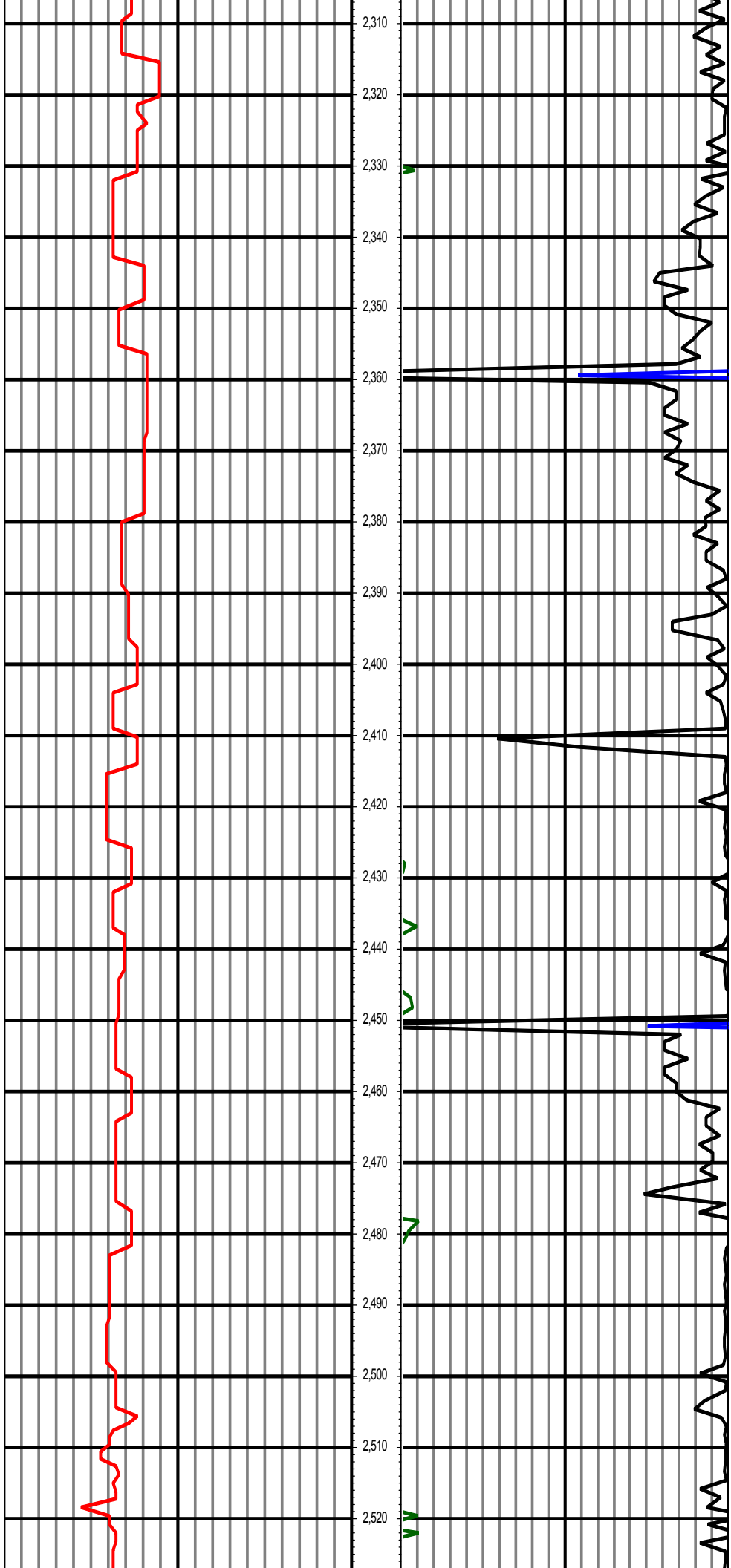


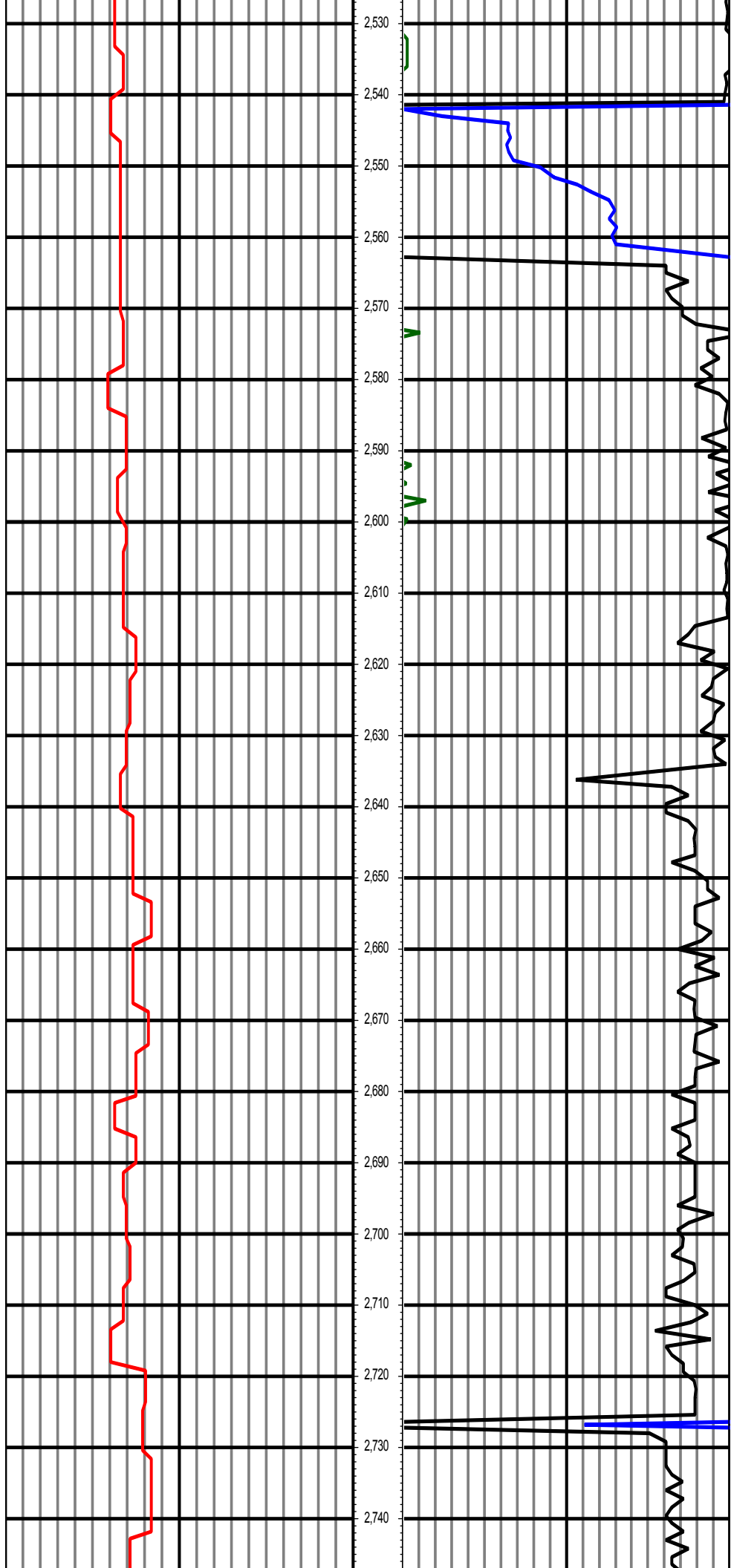


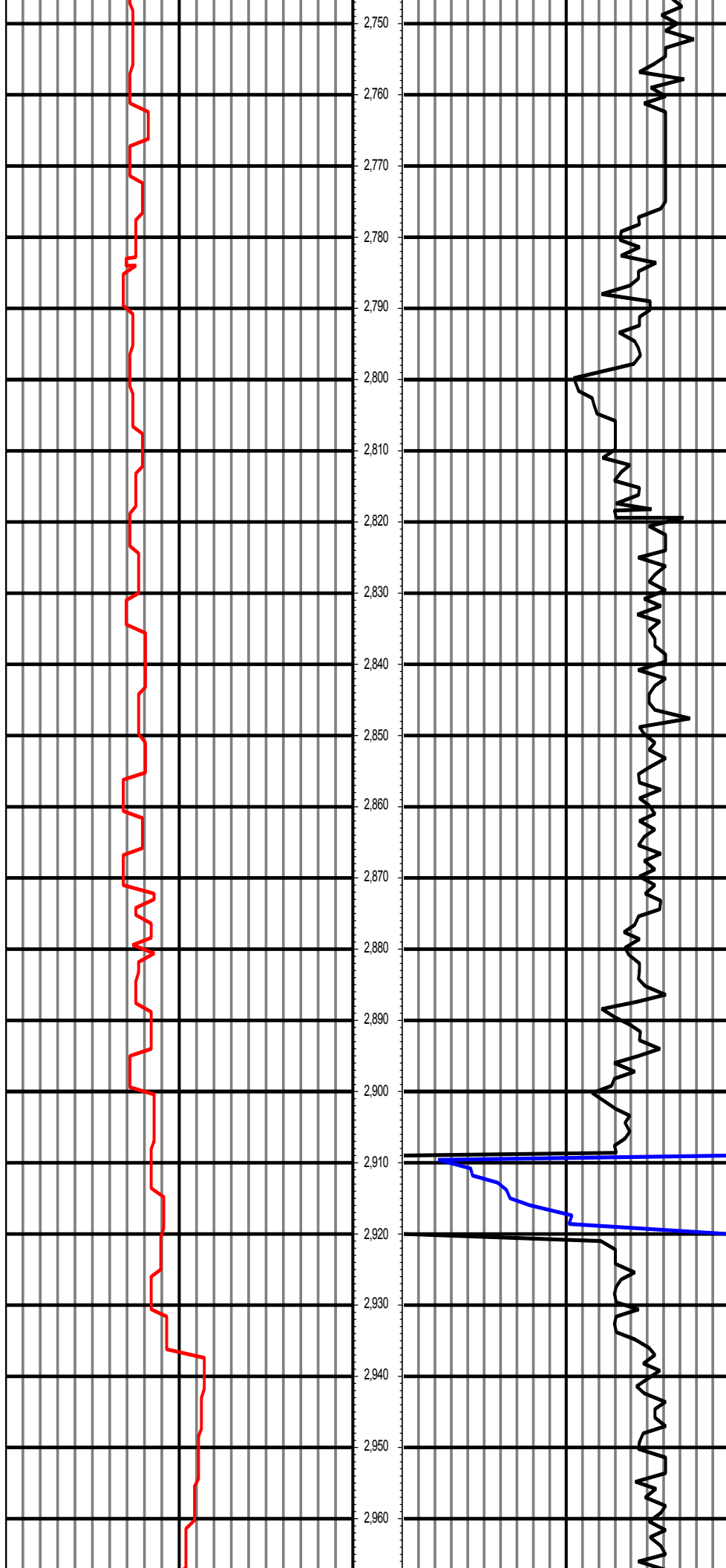


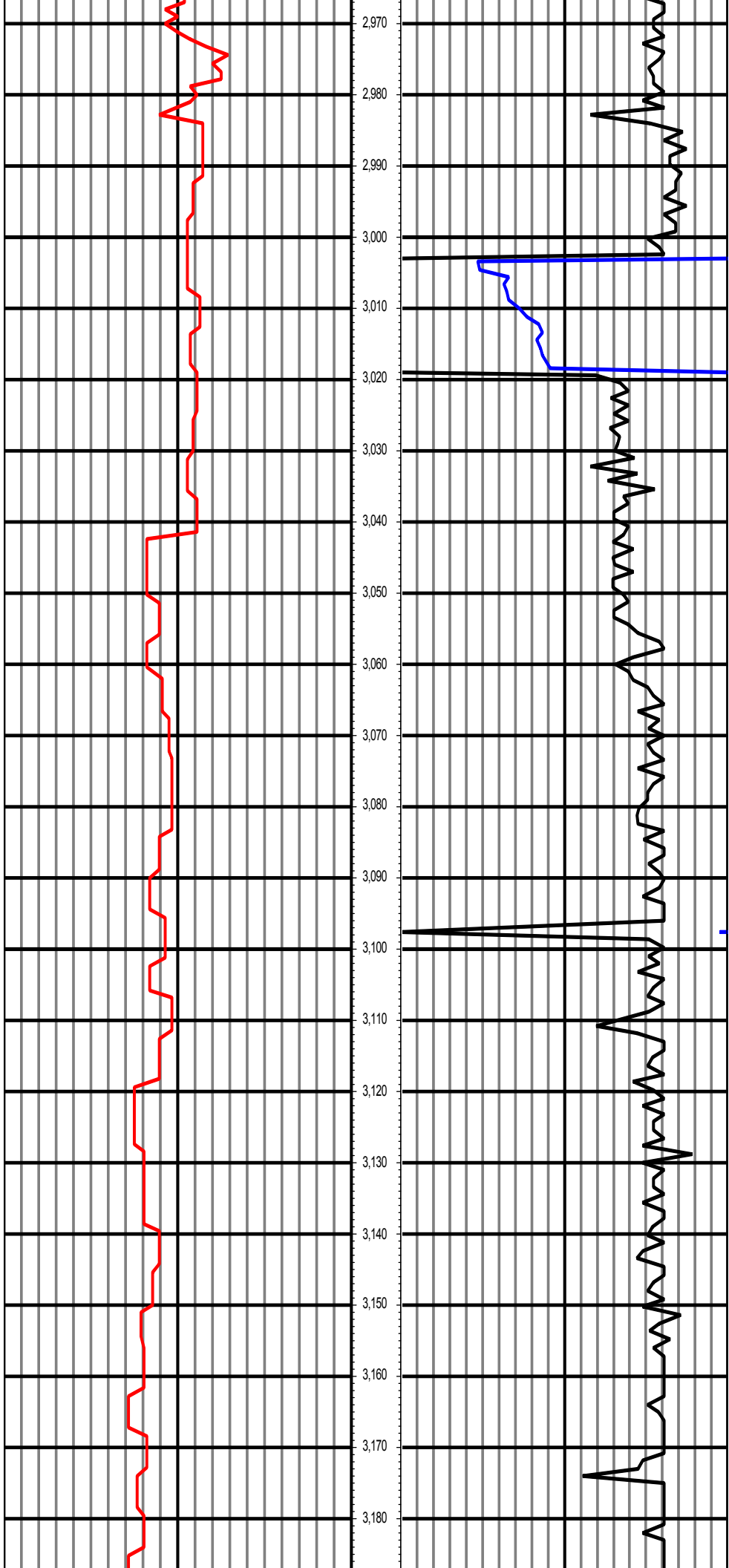


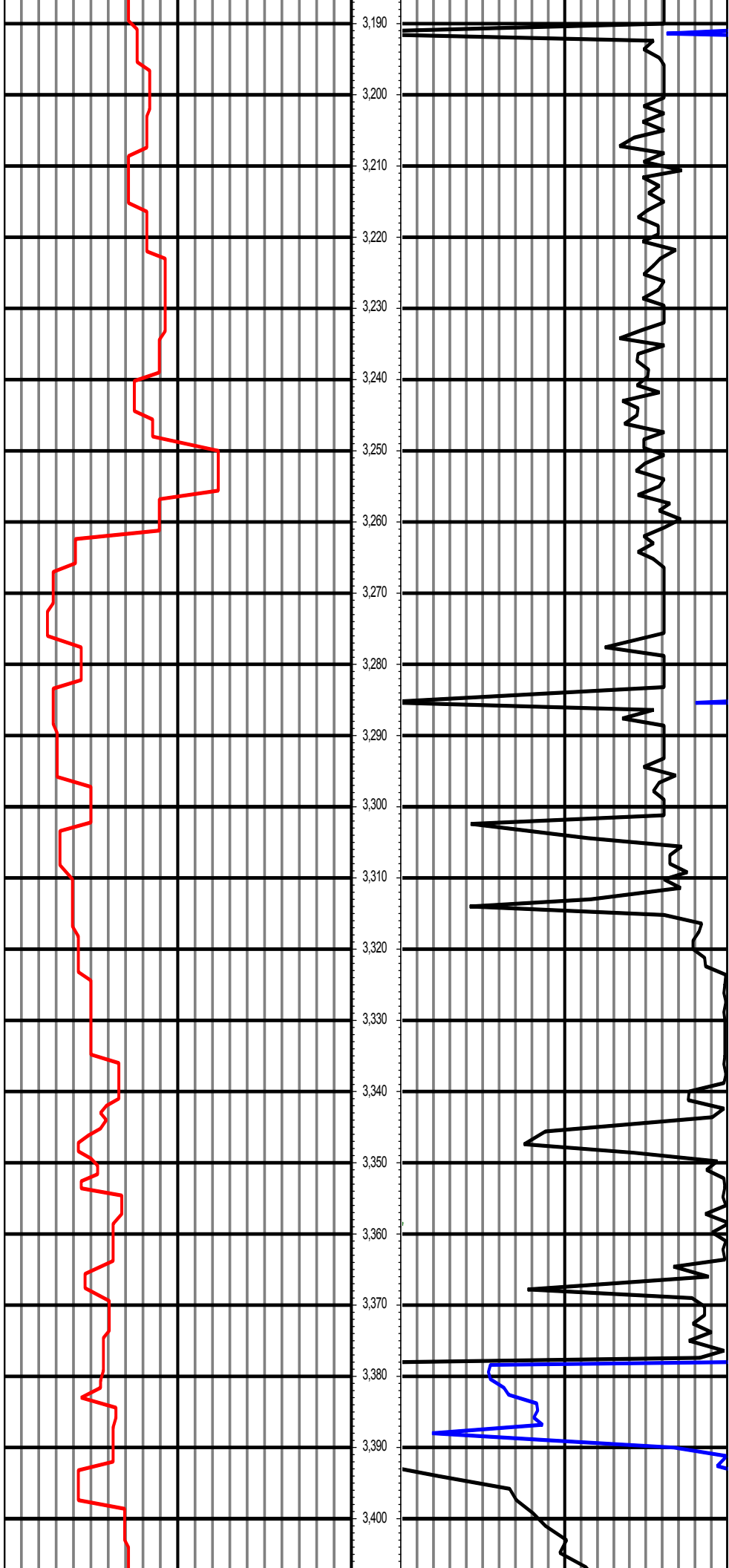


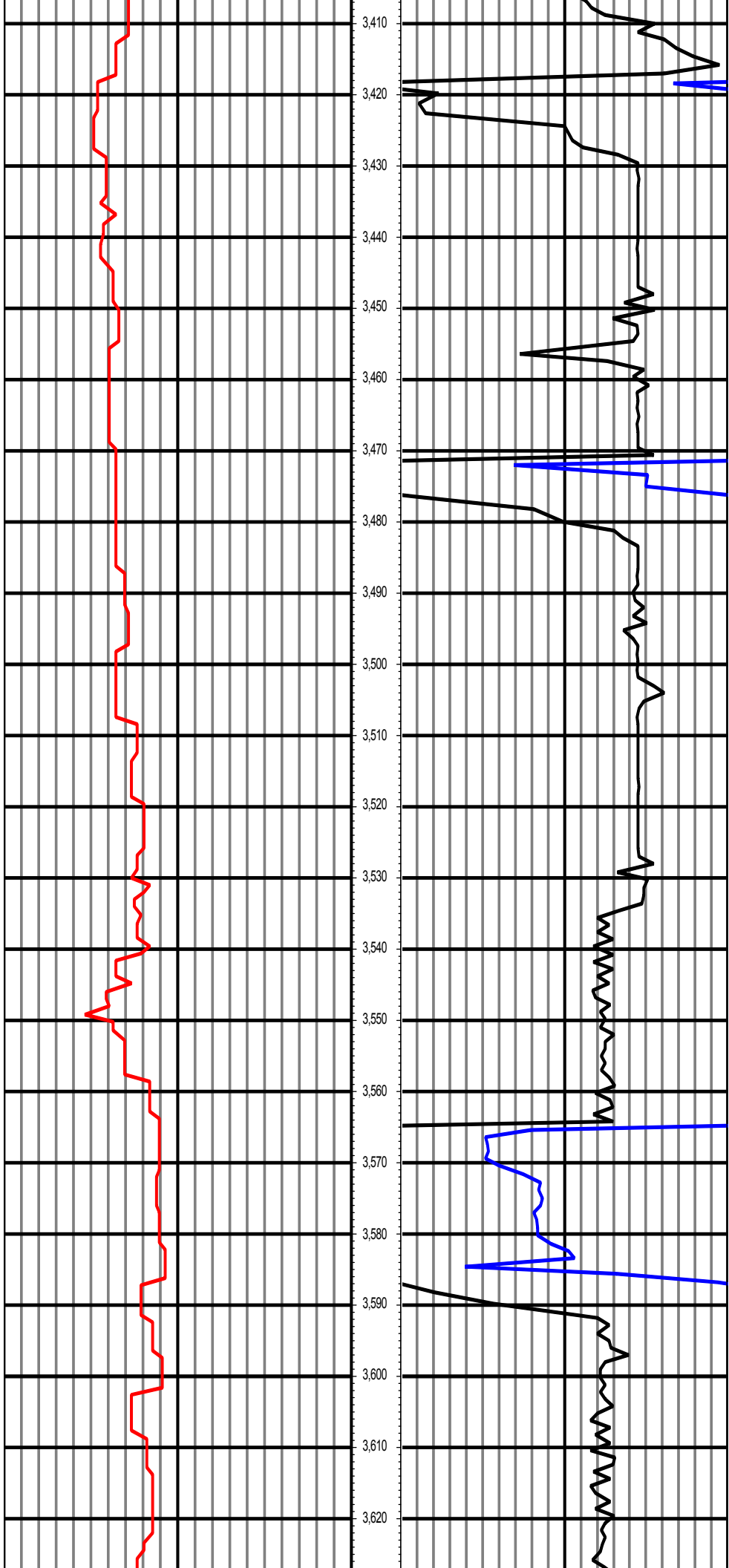


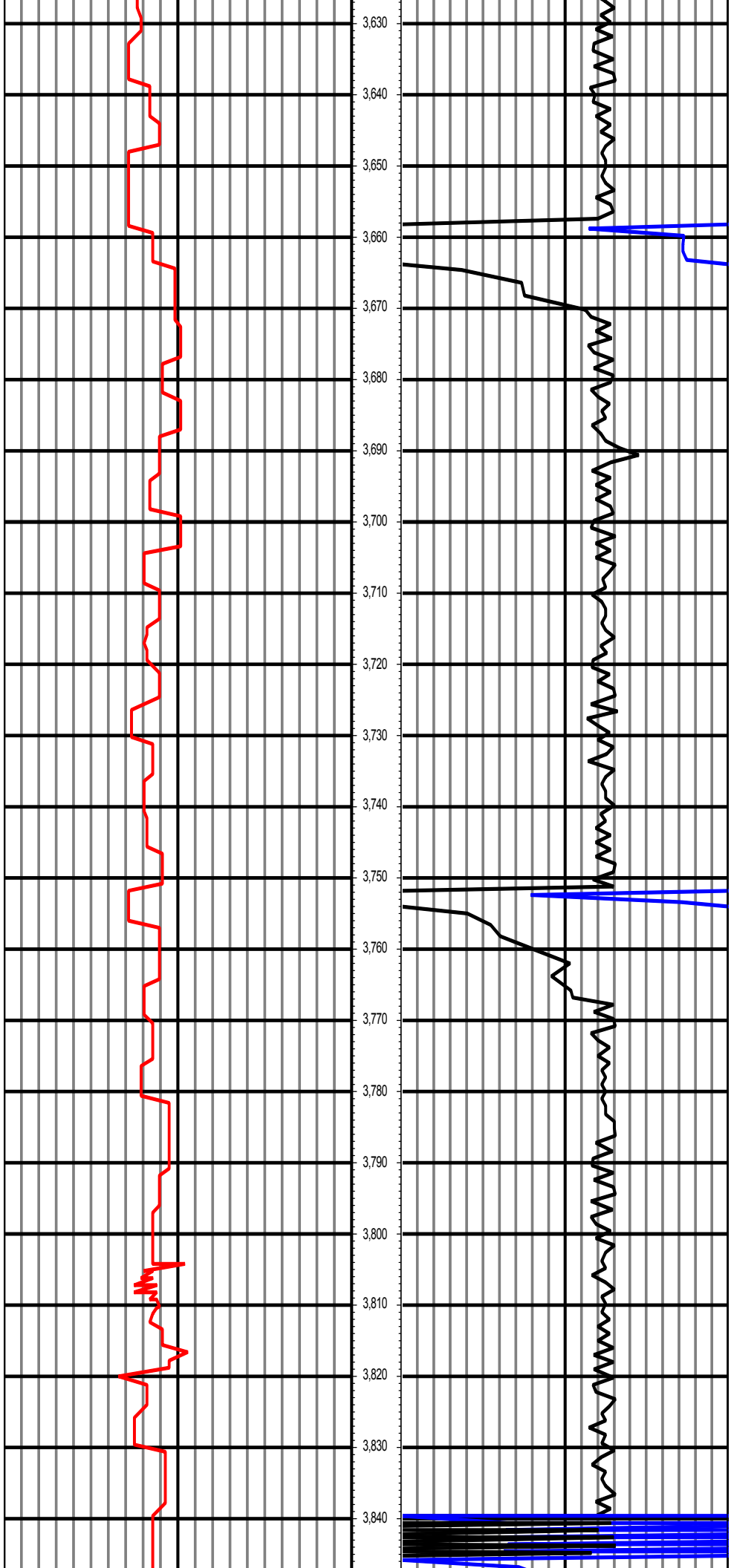


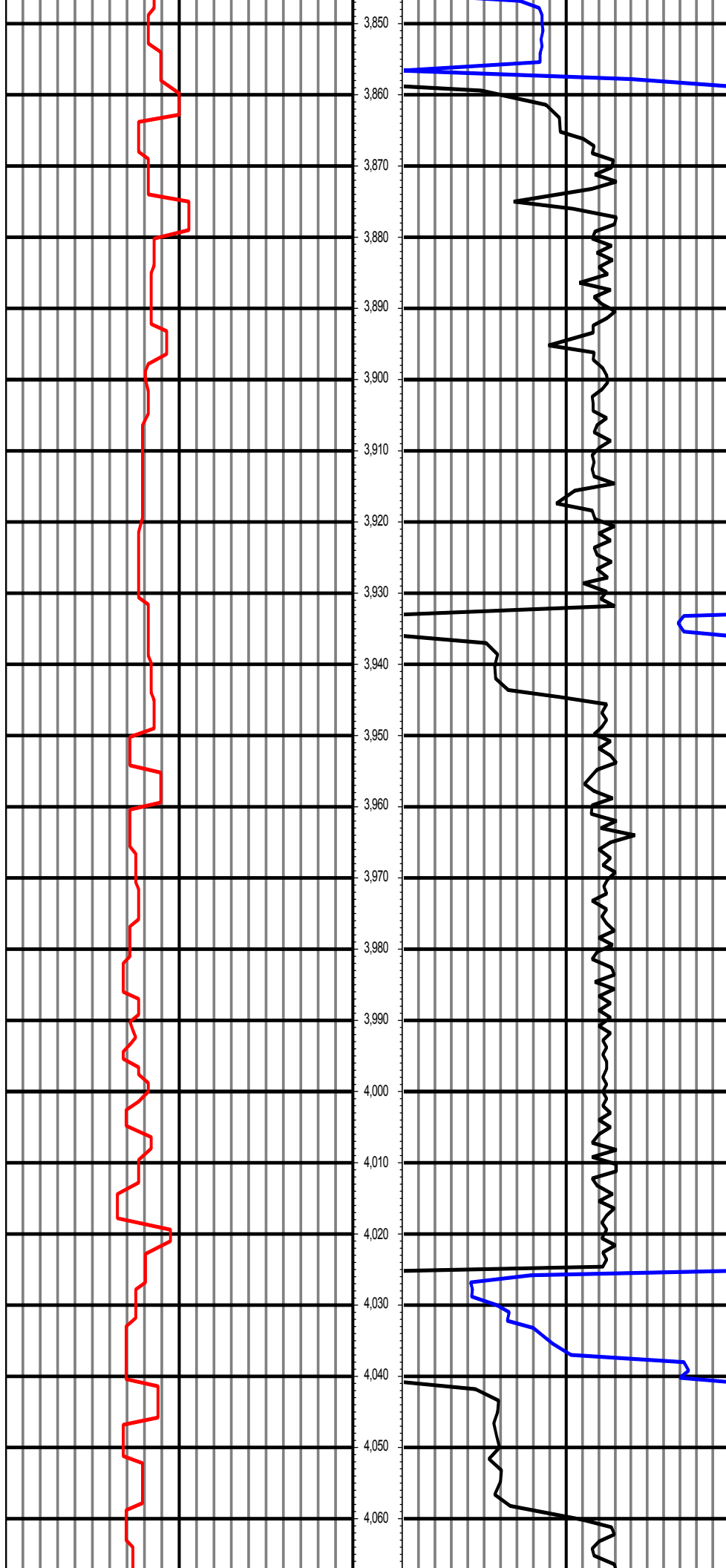


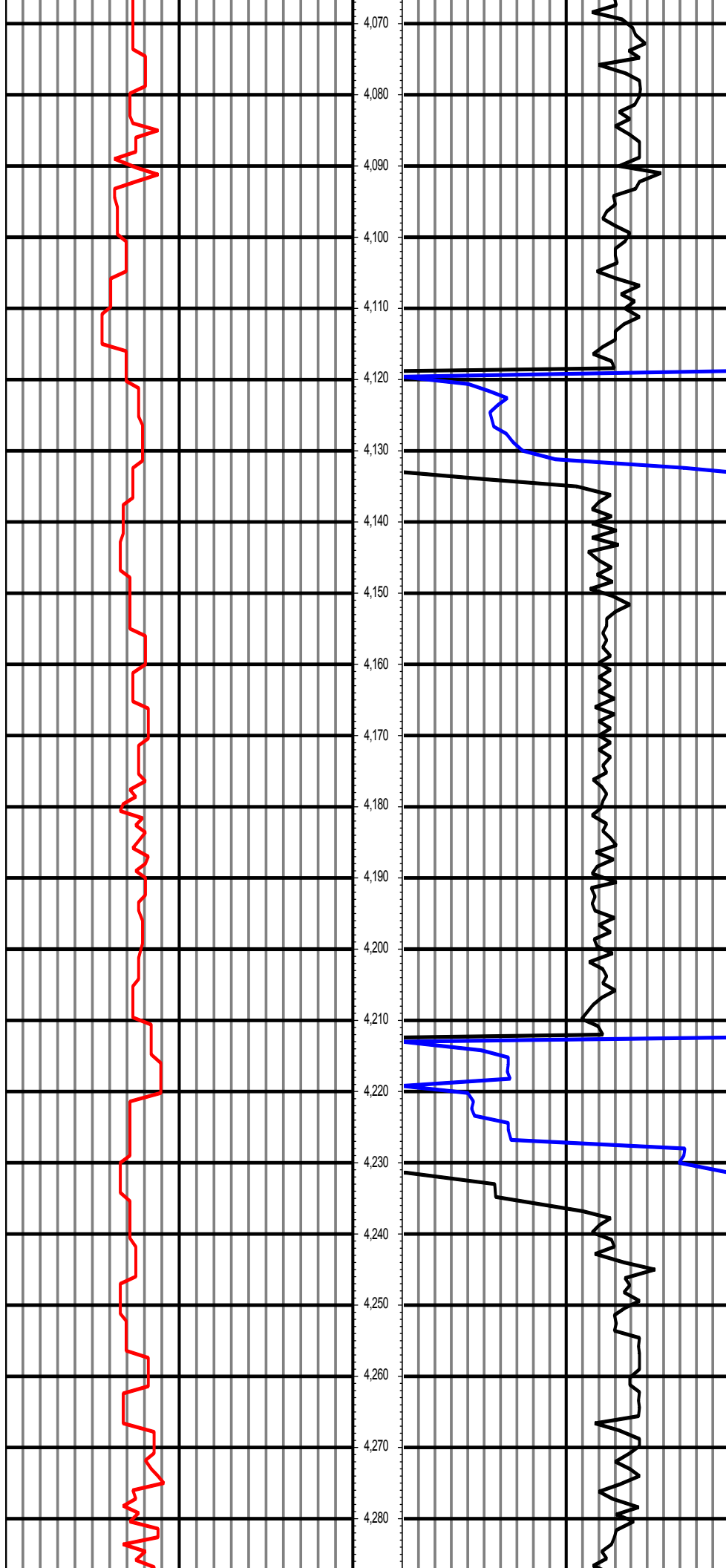


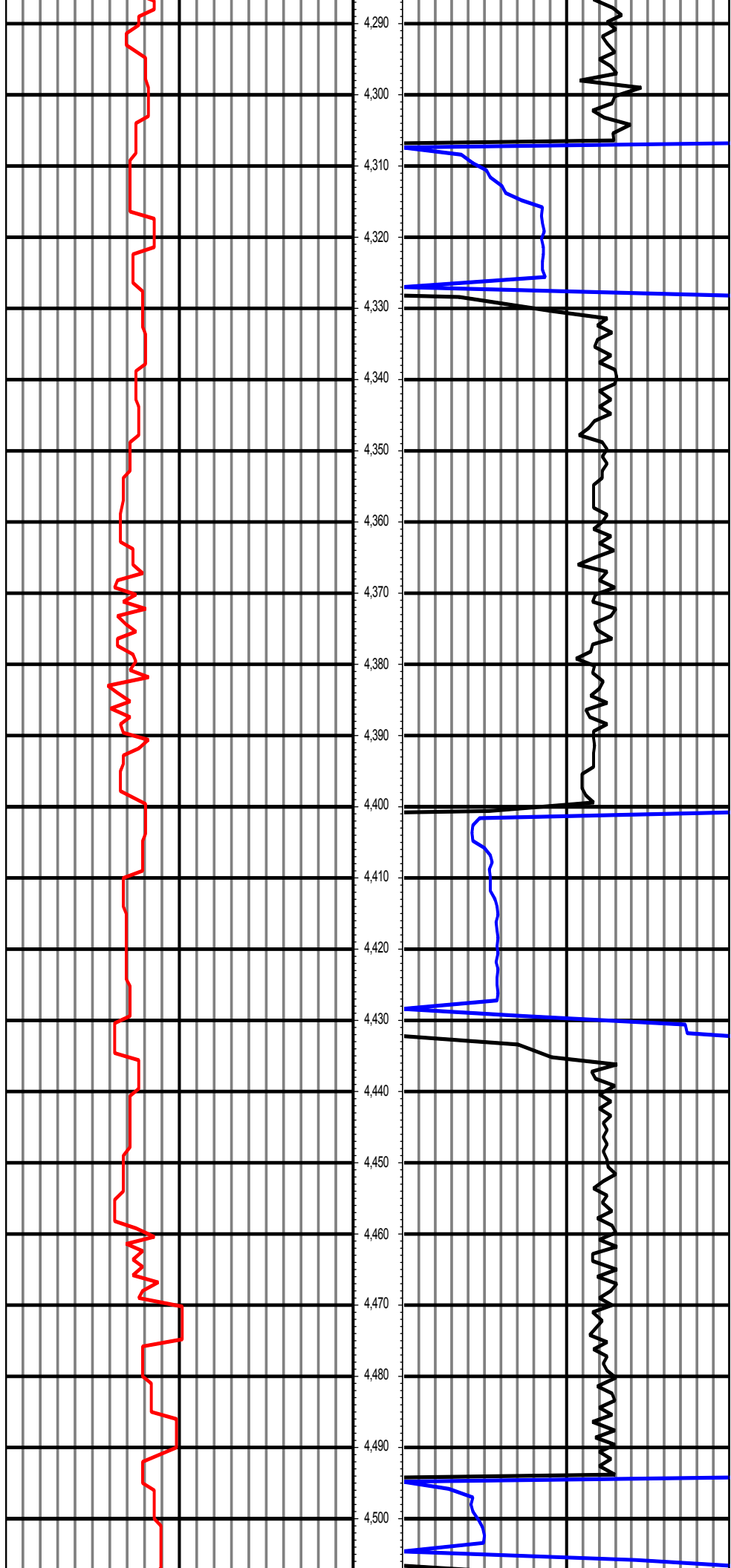


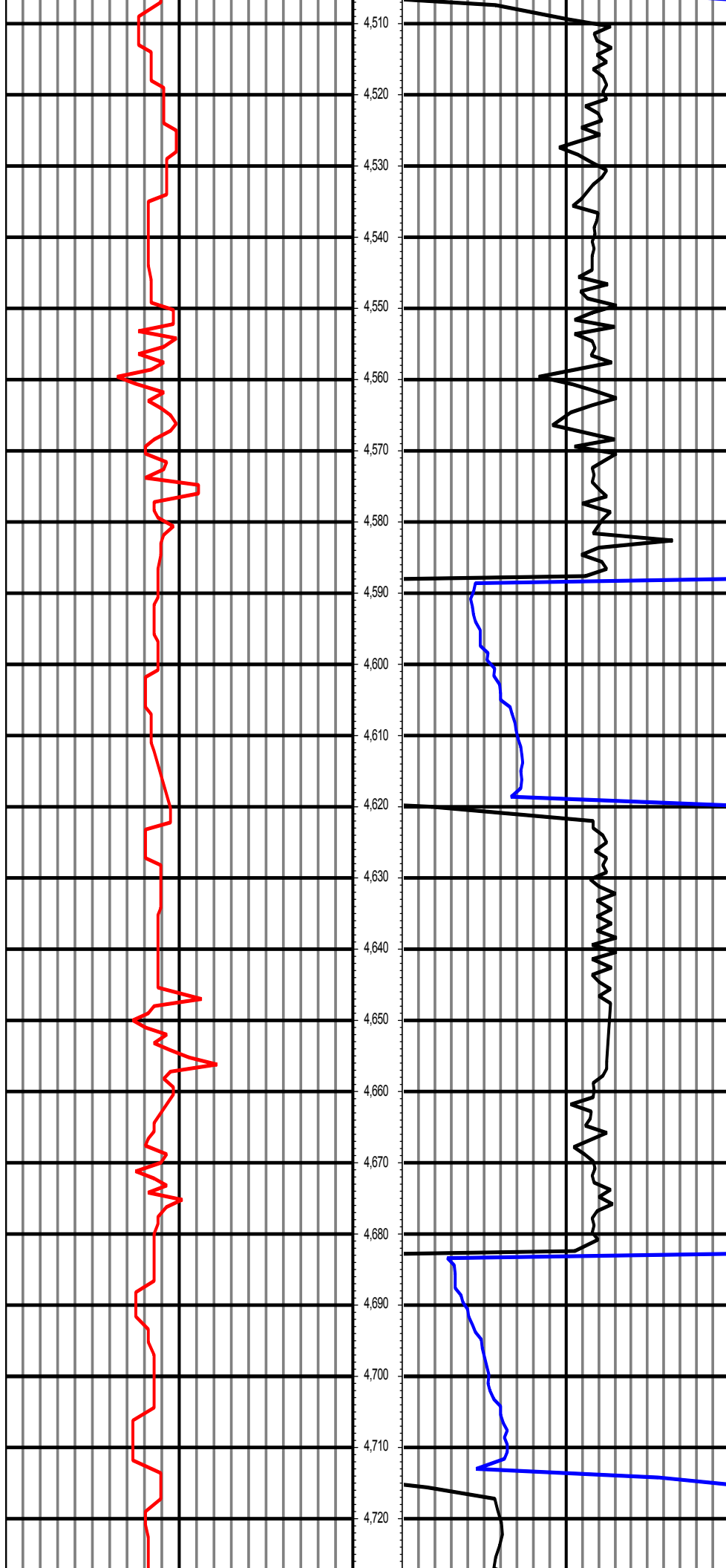


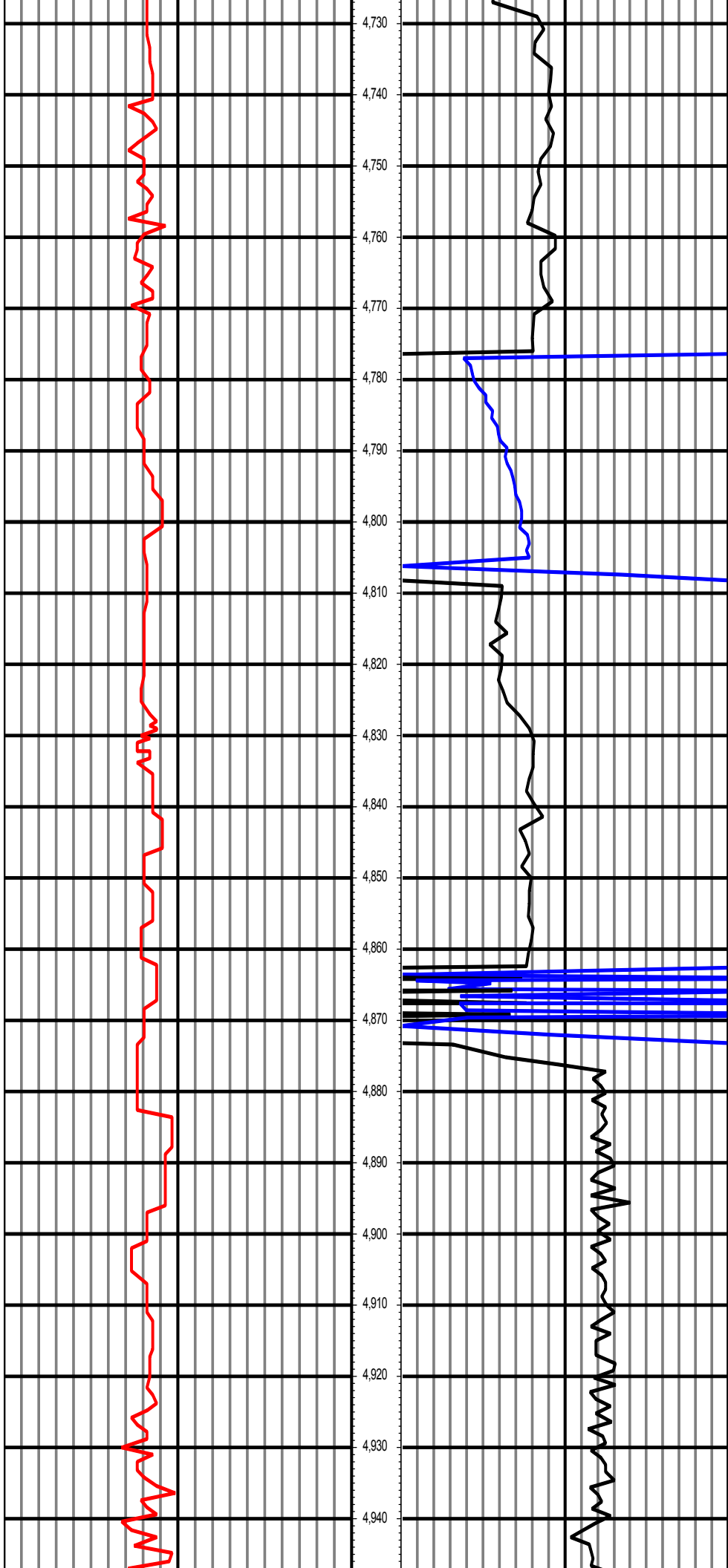


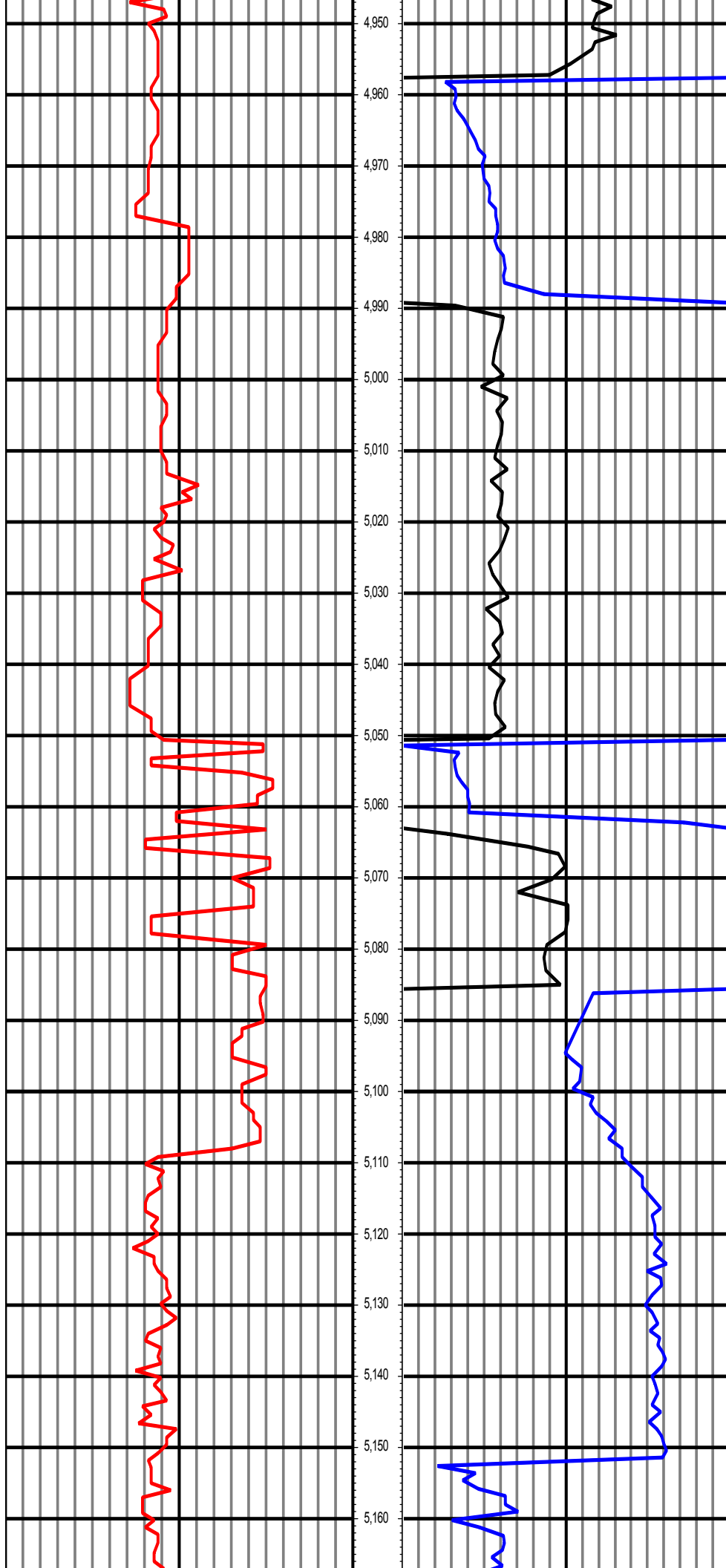


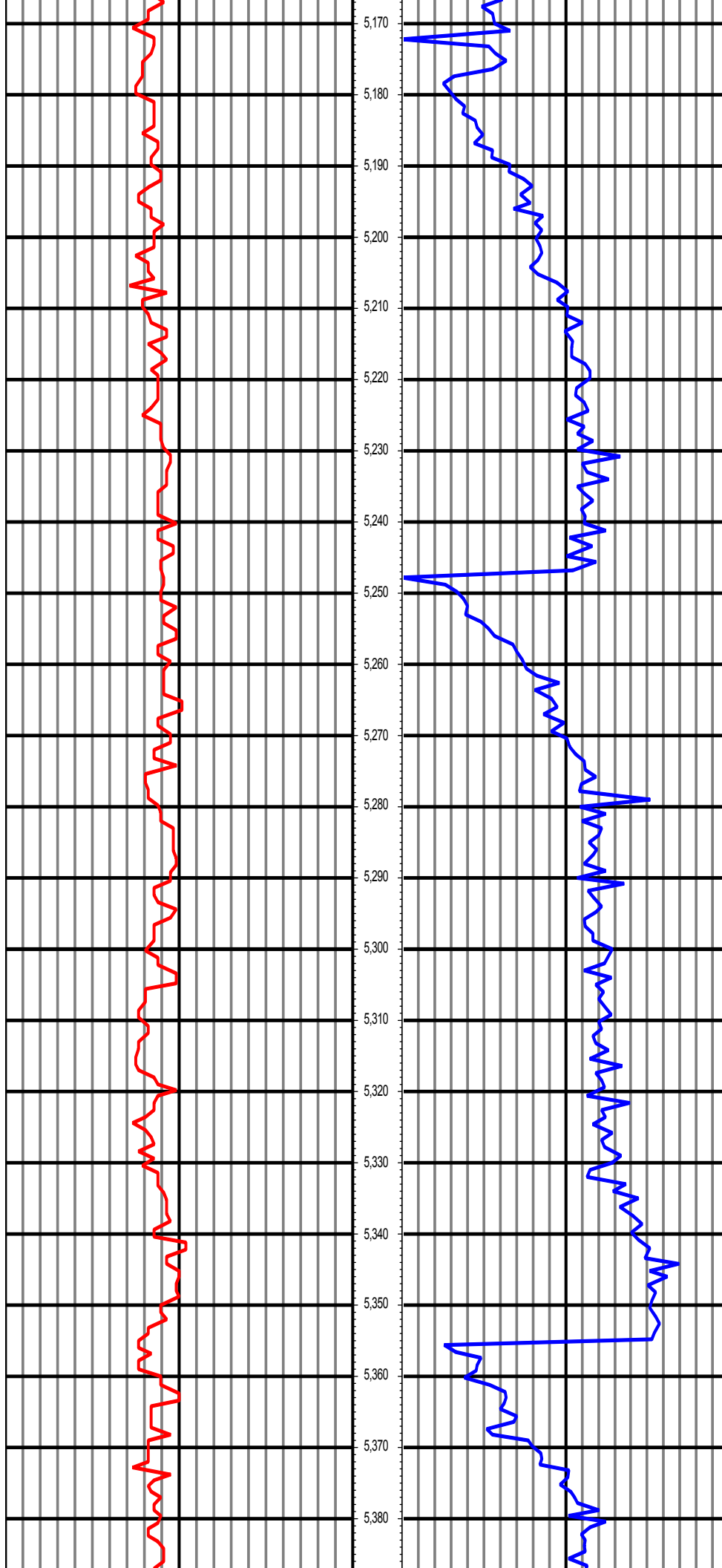


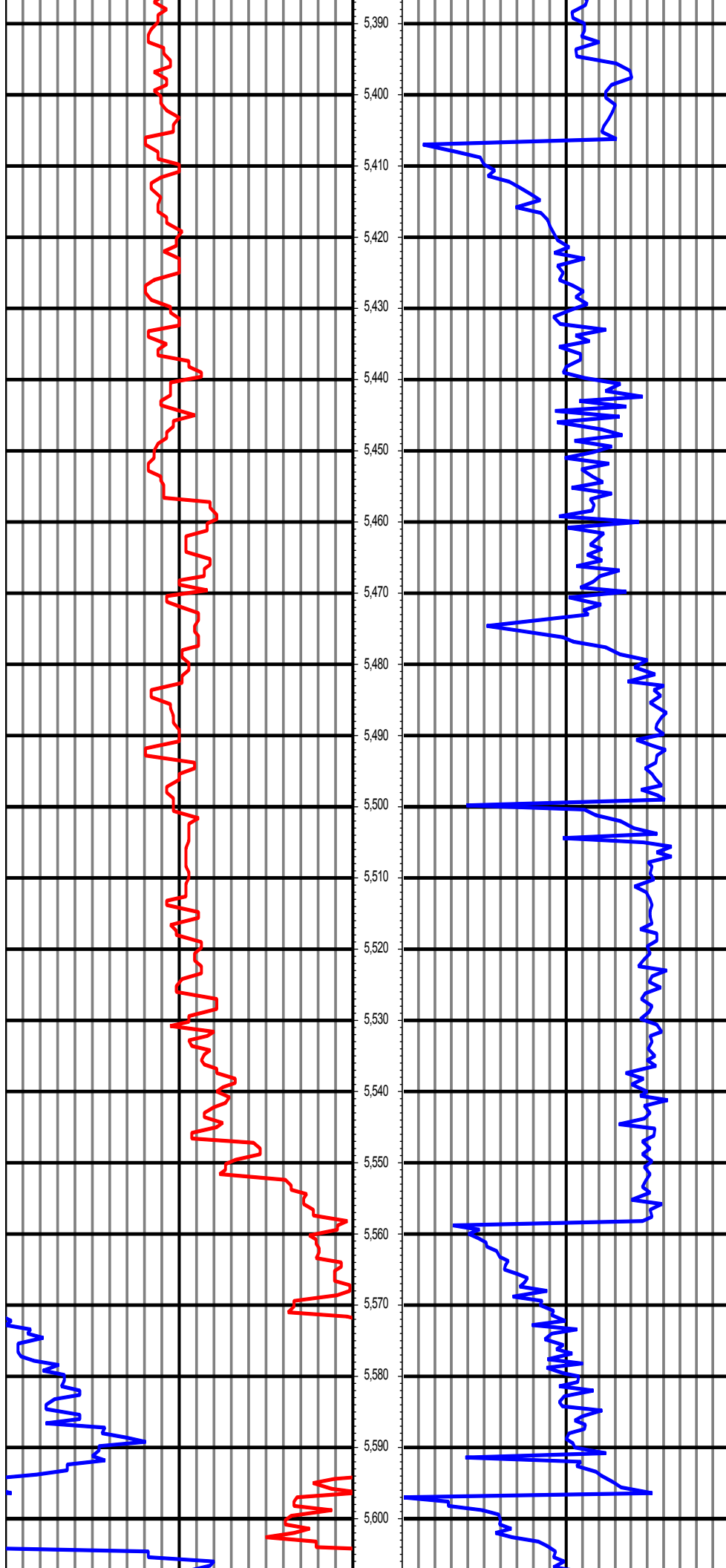


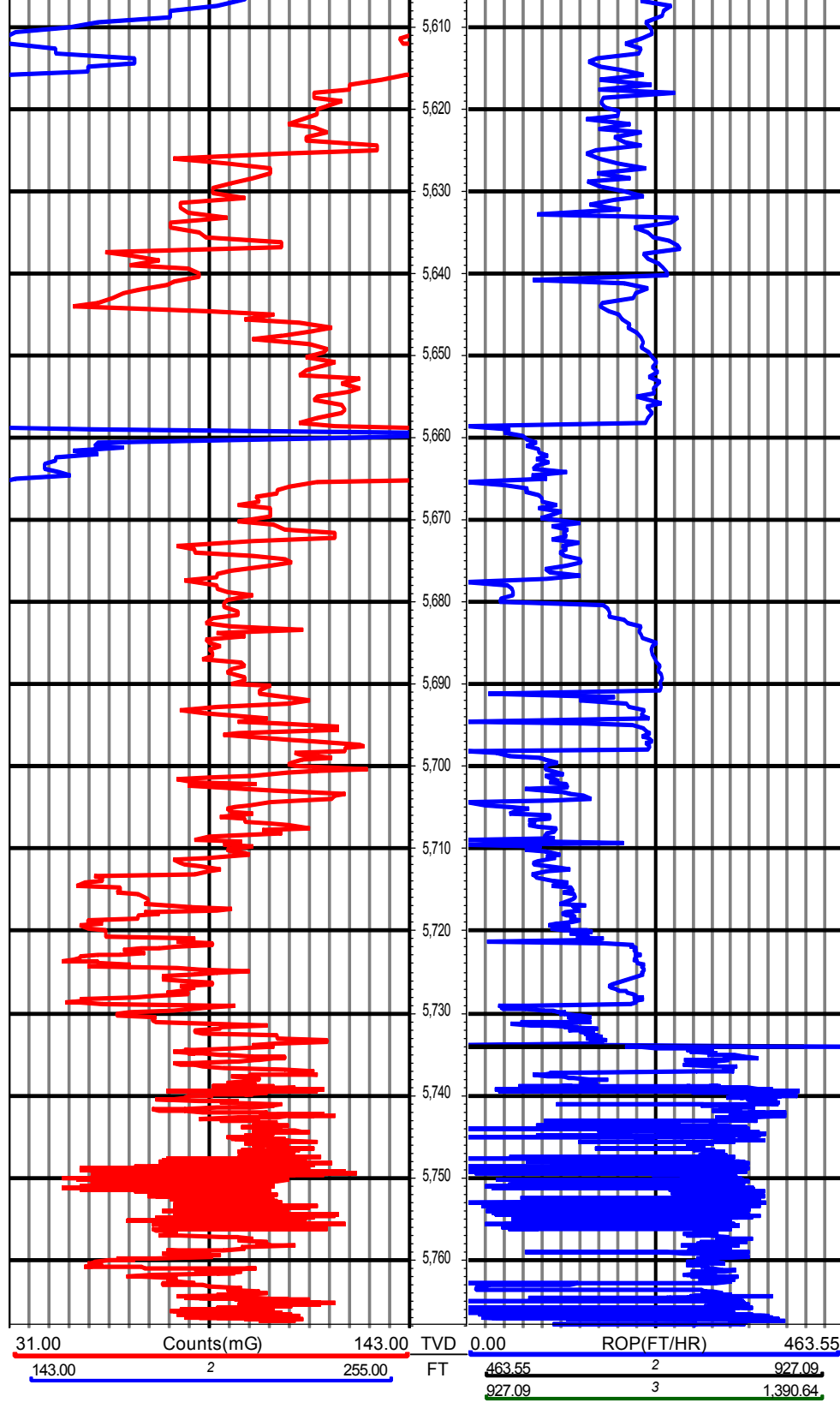














DDC

RM-13951

1":100' - TVD

12/15/2013 1:04:26 AM

Oper. Company: Noble Energy Inc
Country: United States
State / Province: Colorado
County / Parish: Weld
Started: 12/10/2013 06:00 AM

API/UWI: 05-123-37489
Field: Wildcat
Well: Timbro State LD16-65HN
Rig: H&P #326
Ended: 12/14/2013 08:00 PM

Personnel

Day Hand: Chris Abbott
Night Hand: Kirk Kissack
Comp. Emp:

Location

Latitude: 40° 45' 12.312 N
Longitude: 103° 51' 38.844 W
Elev. GL: 4759
Elev. DF: 30
Elev. KB: 4789

Hole Data

Size	From	To
13 3/4	0	1218
8 3/4	1218	6146
6 1/8	6146	9702

Casing Data

Size	From	To
9 5/8	0	1208
7	1208	6136
4 1/2	6136	0

Bit Sizes

Size	From	To
------	------	----

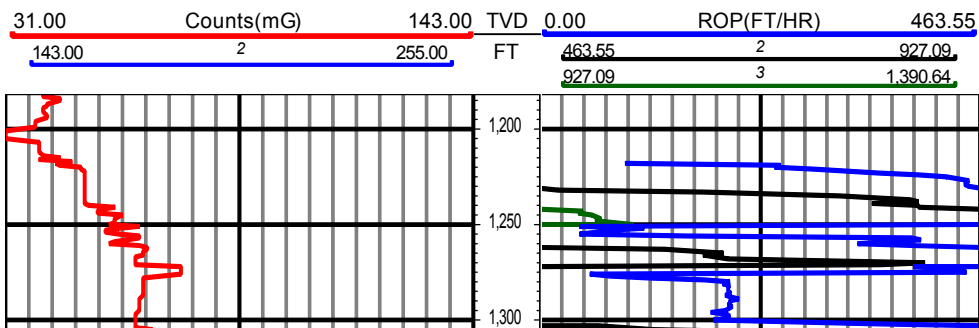
Mud Data

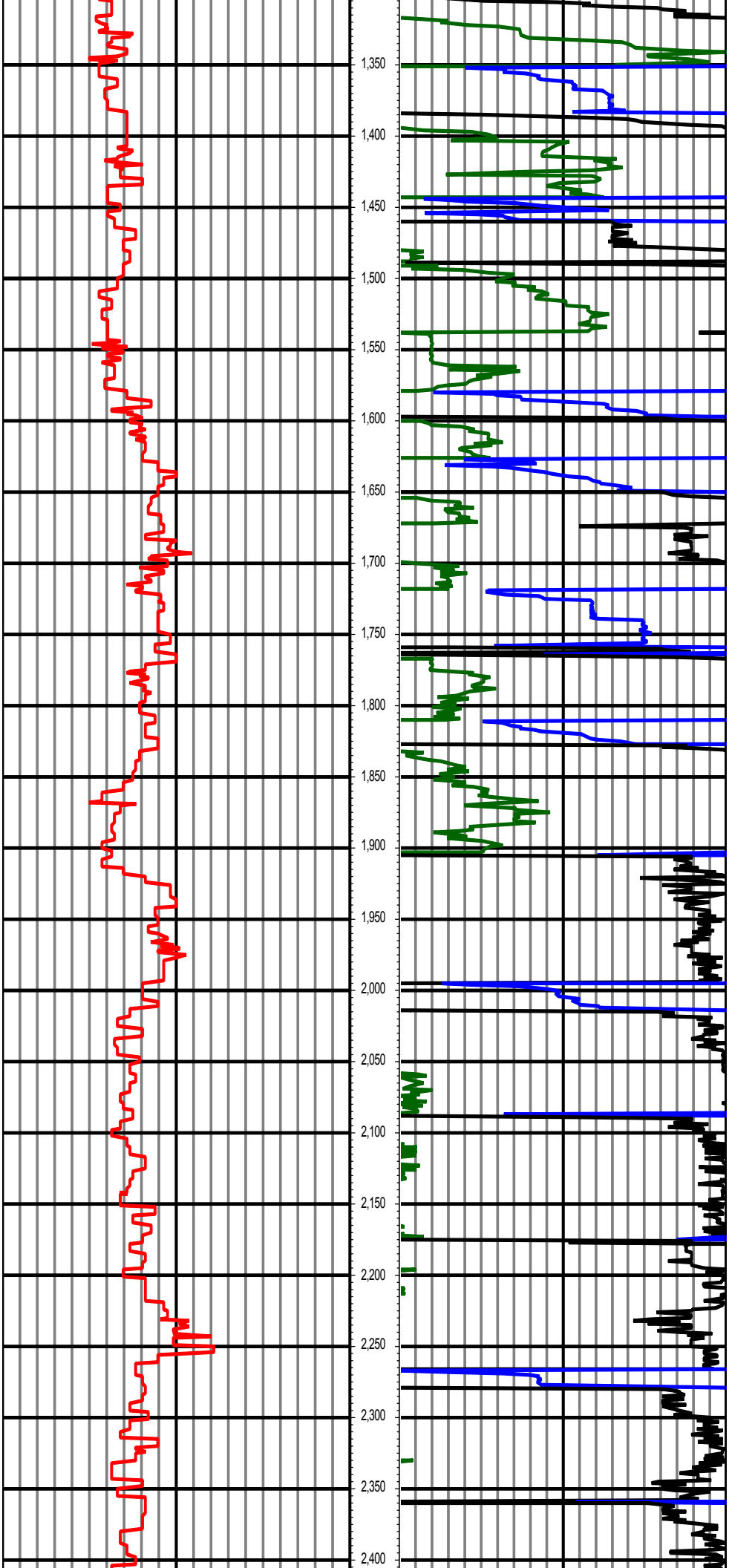
Type	Weight	Density	Viscosity	Rm	Rmf	Rmc	From	To
LSND	10.2	0	38				0	0

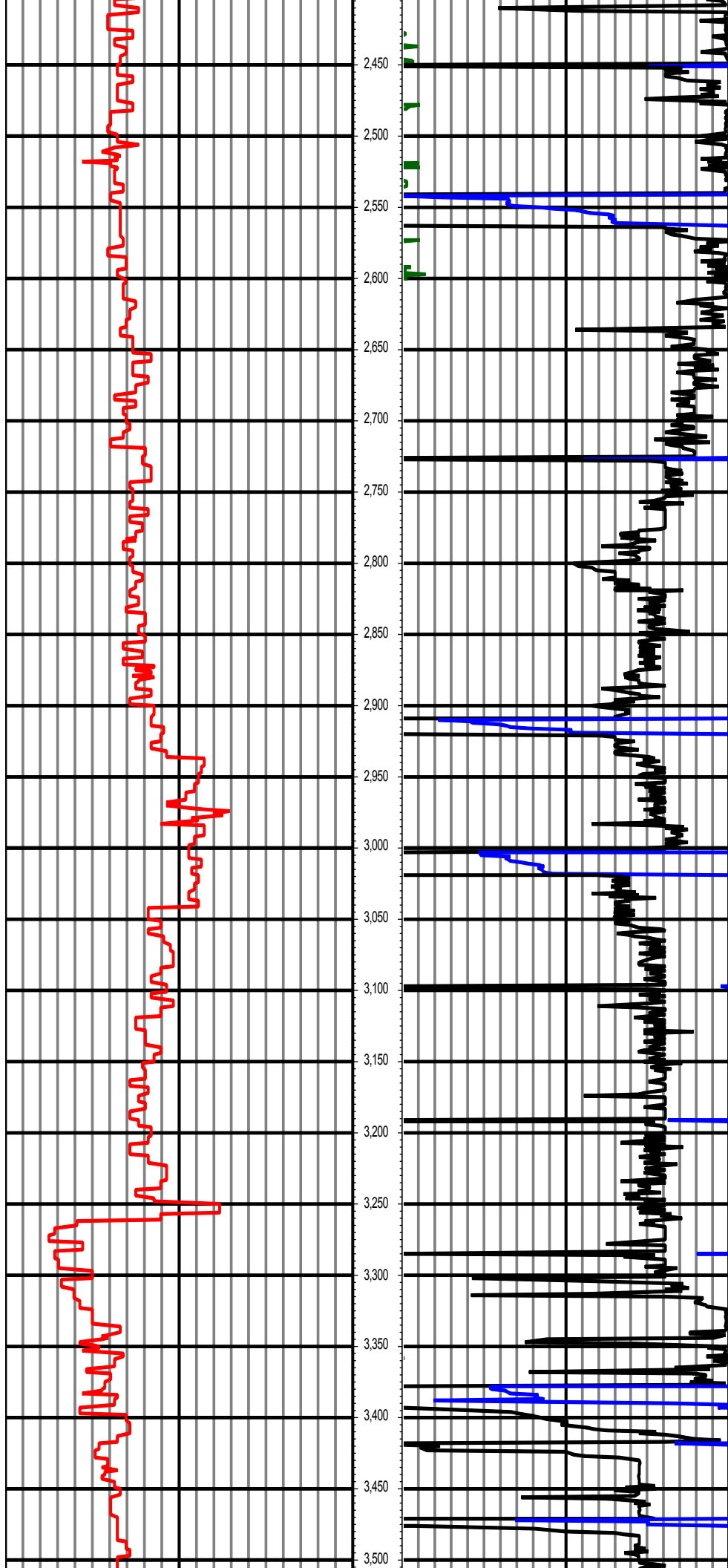
Tool Run Data

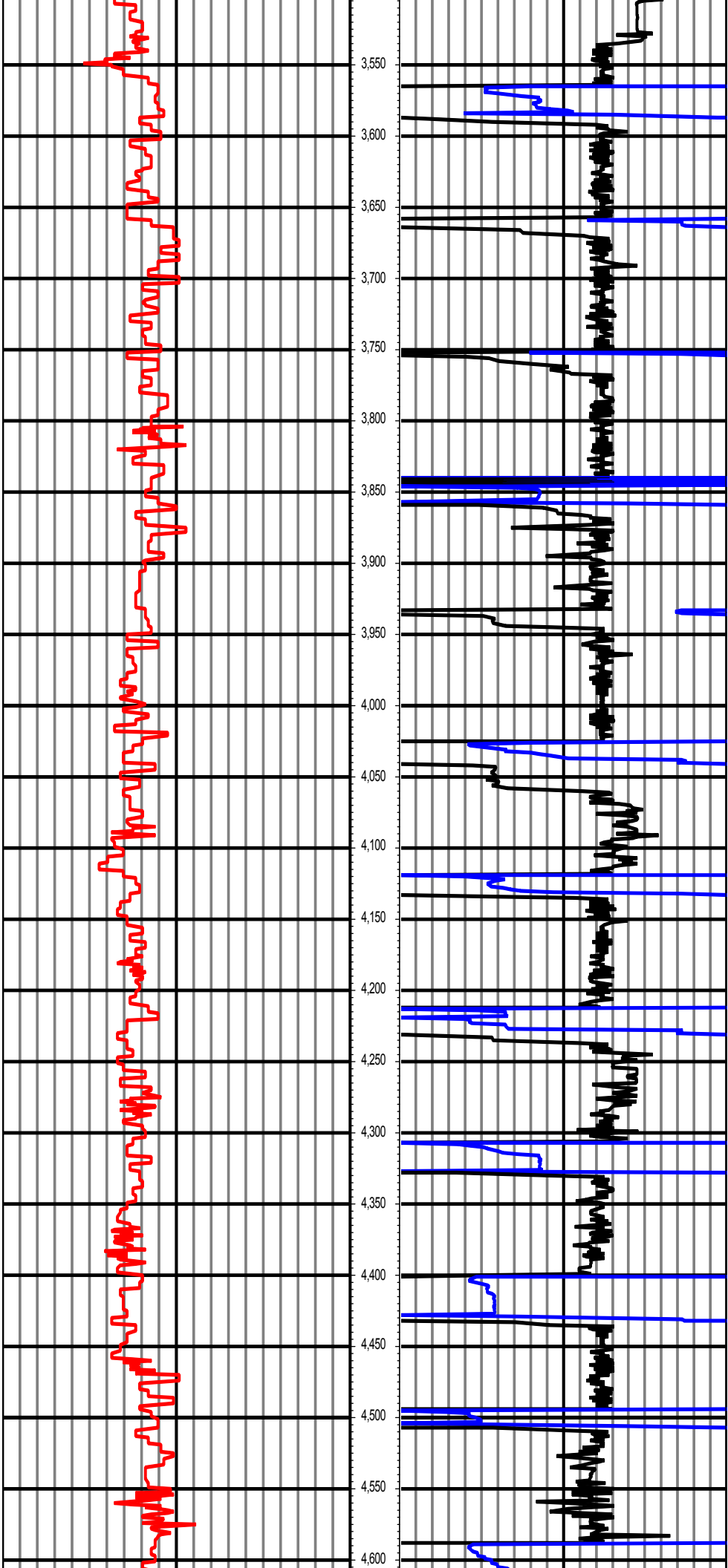
Serial Number	Gamma Offset	Resist. Offset	Start Time	Start Depth	End Time	End Depth
2544	36	0	12/10/2013 6:00:28 AM	1218	12/11/2013 7:30:28 AM	5140
2544	44	0	12/11/2013 9:00:16 AM	5140	12/12/2013 5:00:16 AM	6146
2544	51	0	12/13/2013 5:30:45 AM	6146	12/14/2013 8:00:45 PM	9702

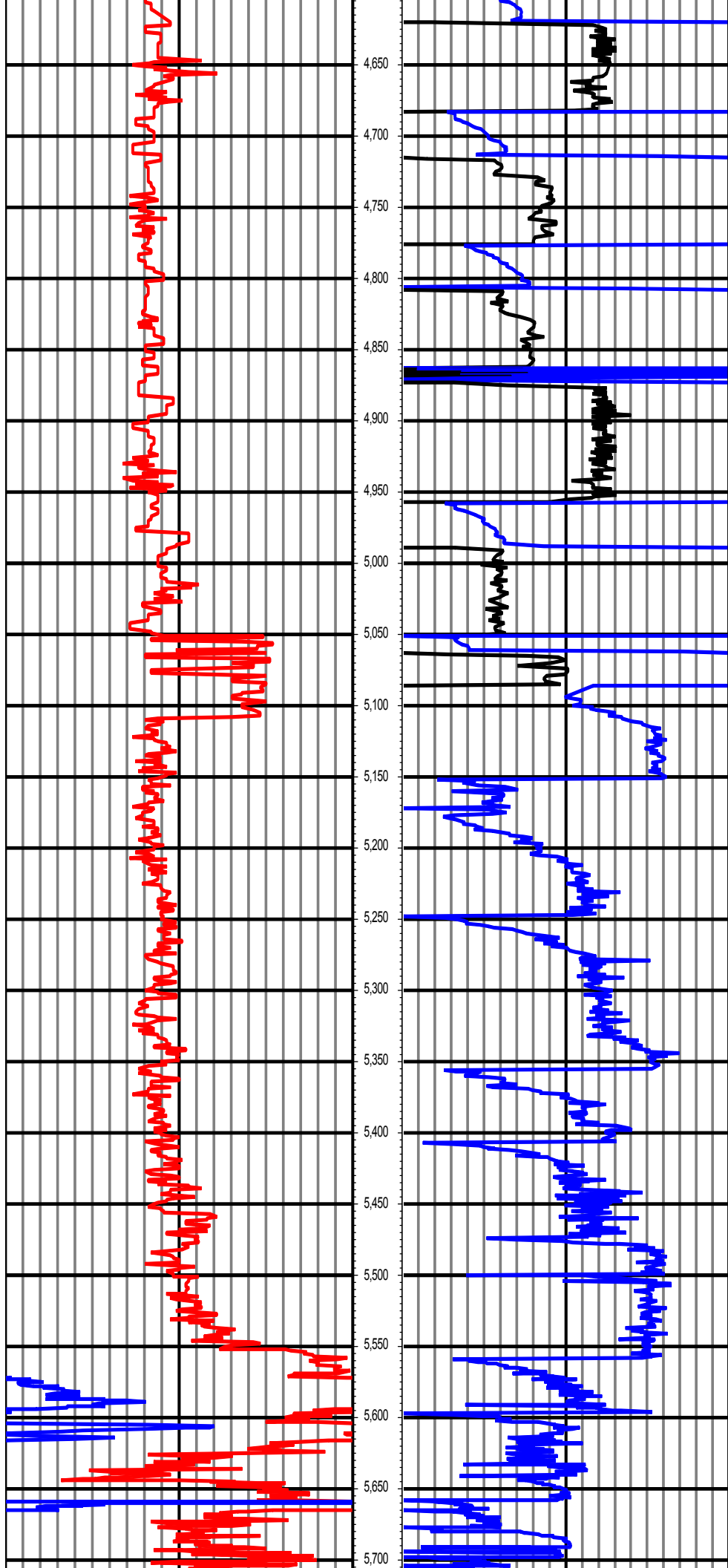
All interpretations are opinions based on inferences from electrical or other measurements and we cannot and do not guarantee the accuracy or correctness of any interpretation, and we shall not except in the case of gross or willful negligence on our part, be liable or responsible for any loss, cost damages or expenses incurred or sustained by anyone resulting from an interpretation made by any of our officers, agents, or employees.

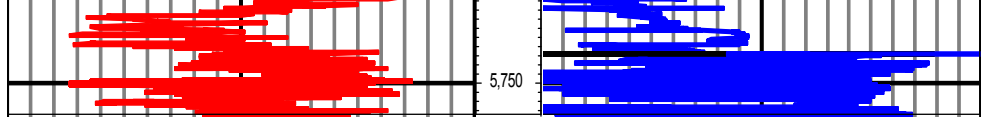












31.00	Counts(mG)	143.00	TVD	0.00	ROP(FT/HR)	463.55
143.00	2	255.00	FT	463.55	2	927.09
				927.09	3	1,390.64