



Radial Cement Bond
Gamma Ray
CCL

Company	Bill Barrett Corporation	Company	Bill Barrett Corporation
Well	70 Ranch 04-63-3340CH	Well	70 Ranch 04-63-3340CH
Field	Wattenberg	Field	Wattenberg
County	Weld	County	Weld
State	Colorado	State	Colorado
Location:	API # : 05-123-37930		Other Services
1995' FSL & 234' FWL			
SEC 3	TWP 4N	RGE 63W	
Permanent Datum	GL	Elevation	4559
Log Measured From	KB 23		
Drilling Measured From	GL		
		Elevation	KB. 4582 D.F. 4581 G.L. 4559

Date 2-25-2014

Run Number	1
Depth Driller	10855
Depth Logger	5820
Bottom Logged Interval	5818
Top Log Interval	Surface
Open Hole Size	8.875
Type Fluid	Water
Density / Viscosity	1.0
Max. Recorded Temp.	208
Estimated Cement Top	Surface
Time Well Ready	
Time Logger on Bottom	
Equipment Number	4740
Location	Greeley
Recorded By	Jeremiah Bullard
Witnessed By	Johnny Dawran

Borehole Record				Tubing Record			
Run Number	Bit	From	To	Size	Weight	From	To
One	12.25	0	831				
Two	8.75	831	6789				
Three	6.185	6789	10855				

Casing Record	Size	Wgt/Ft	Top	Bottom
Surface String	9.875	36#	0	831
Prot. String				
Production String	7	26#	0	6789
Liner	4.5		6789	10855

<<< Fold Here >>>

All interpretations are opinions based on inferences from electrical or other measurements and we cannot and do not guarantee the accuracy or correctness of any interpretation, and we shall not, except in the case of gross or willful negligence on our part, be liable or responsible for any loss, costs, damages, or expenses incurred or sustained by anyone resulting from any interpretation made by any of our officers, agents or employees. These interpretations are also subject to our general terms and conditions set out in our current Price Schedule.

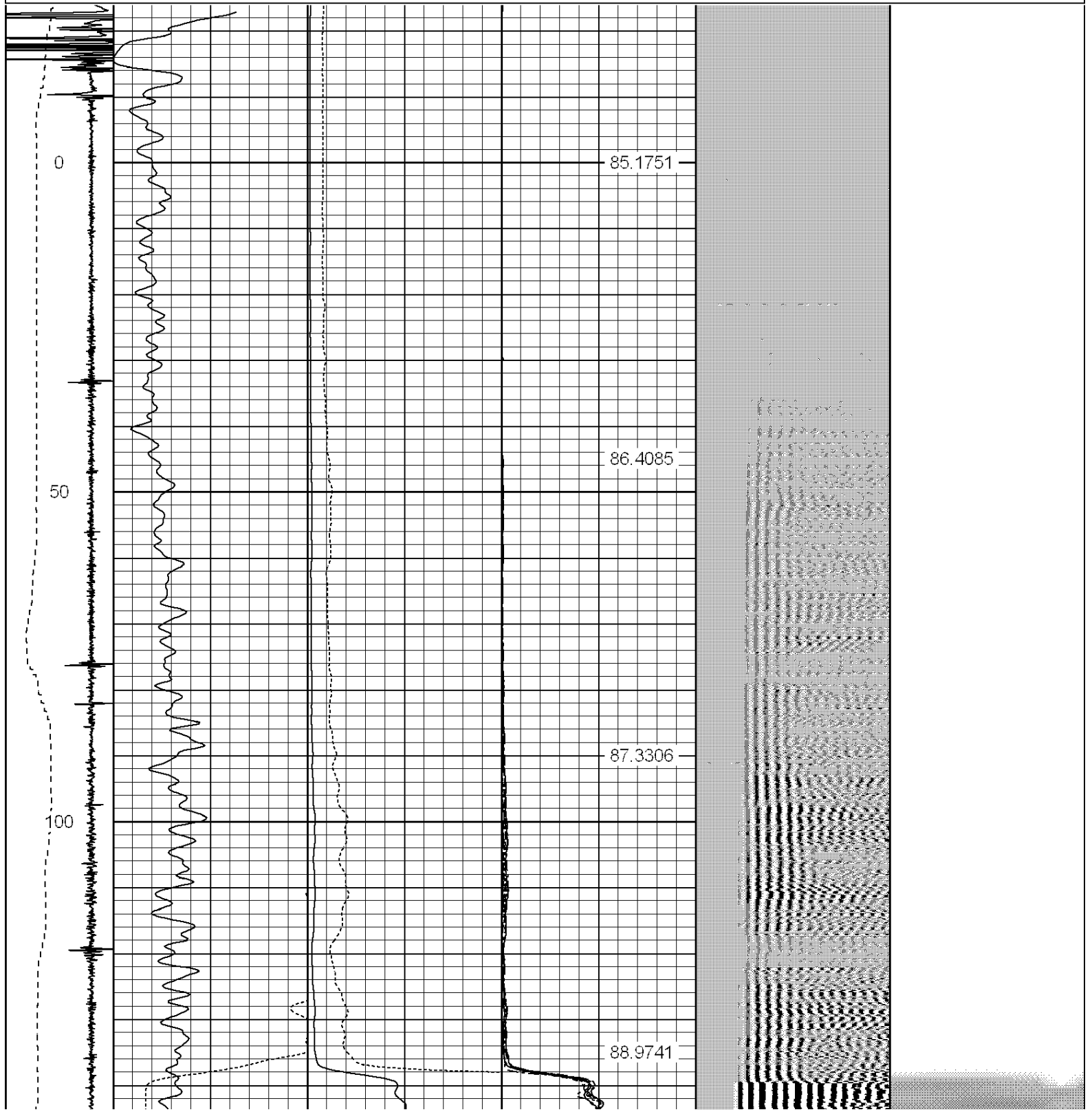
Comments

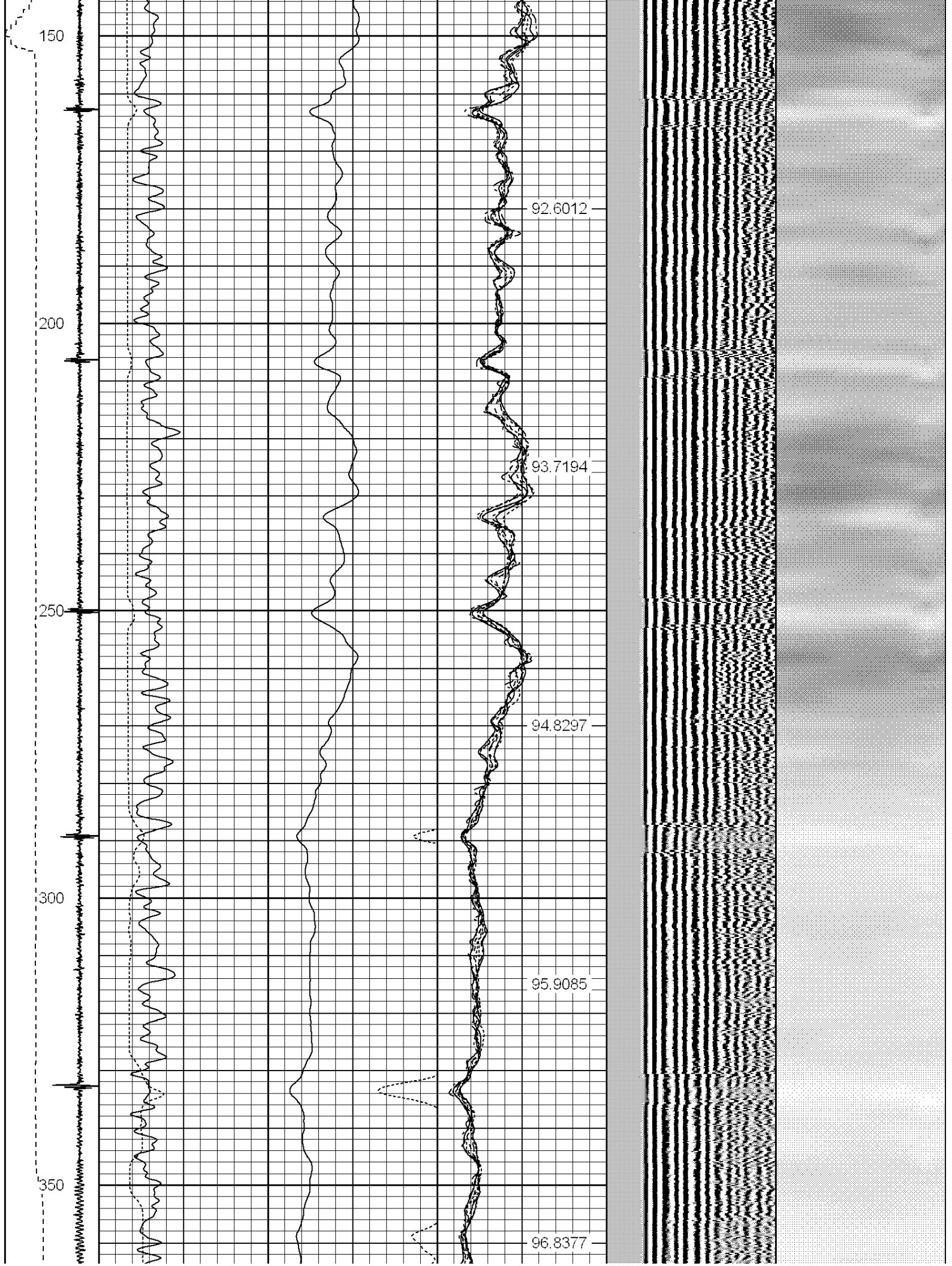
Ran CBL to verify cement
correlated to pipe tally and liner top

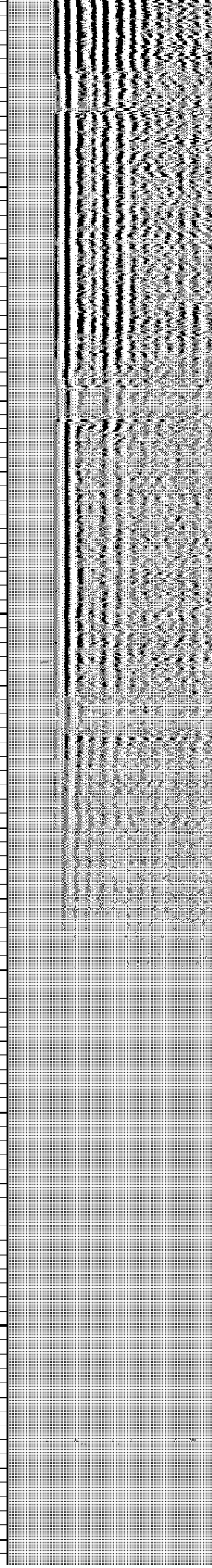
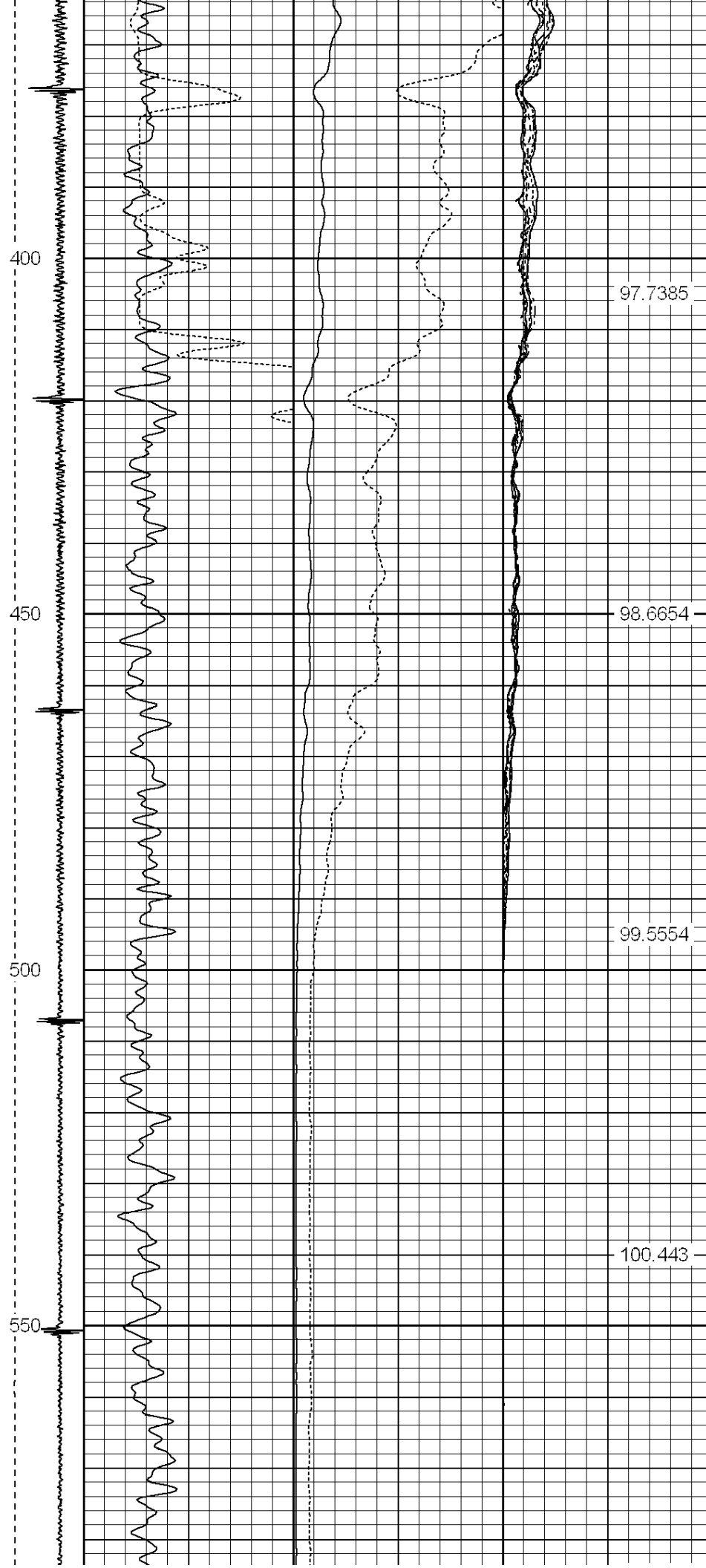
Sensor	Offset (ft)	Schematic	Description	Len (ft)	OD (in)	Wt (lb)

			PTS275	2.83	2.75	
HEADVOLT	16.08					
IntTemp	14.66					
WVF3FT	11.41					
WVFCAL	11.41					
WVFS1	11.41					
WVFS2	11.41					
WVFS3	11.41					
WVFS4	11.41					
WVFS5	11.41					
WVFS6	11.41					
WVFS7	11.41					
WVFS8	11.41					
WVF5FT	10.41					
			RBT-Probe (Base) Probe Radii Bond Tool with Digital Telemetry	8.92	2.75	90.00
CNLSC	6.00					
CNSSC	5.17					
			CNT-Probe_B (275) 6 bow centralizer	2.83	2.75	40.00
CCL	3.64					
			GR-Probe (275) Probe 2.75"	4.33	2.75	30.00
GR	0.90					
Dataset: 70 ranch 4-63-3-3340ch.db: field/well/run1/pass8 Total Length: 18.91 ft Total Weight: 160.00 lb O.D. 2.75 in						

-4	CCL	1	200	TT (usec)	800	0	AMP (mV)	100	0	AMPS1	100	200	VDL	1200	1	Cement Map	8
LSPD			0	GR (GAPI)	200	0	AMPx5 (mV)	20	0	AMPS2	100				1		100
(ft/min)			200	GR (GAPI)	400				0	AMPS4	100						
0		250							0	AMPS5	100						
									0	AMPS6	100						
									0	AMPS7	100						
									0	AMPS8	100						
										IntTemp							
										(degF)							







101.339

102.24

103.231

104.239

105.133

600

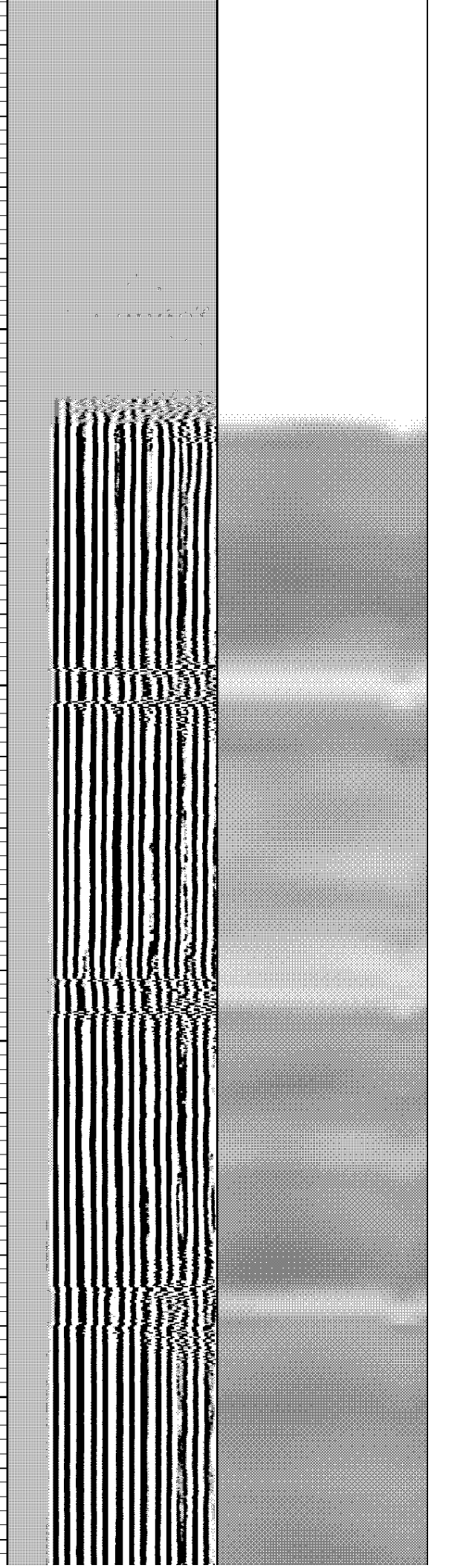
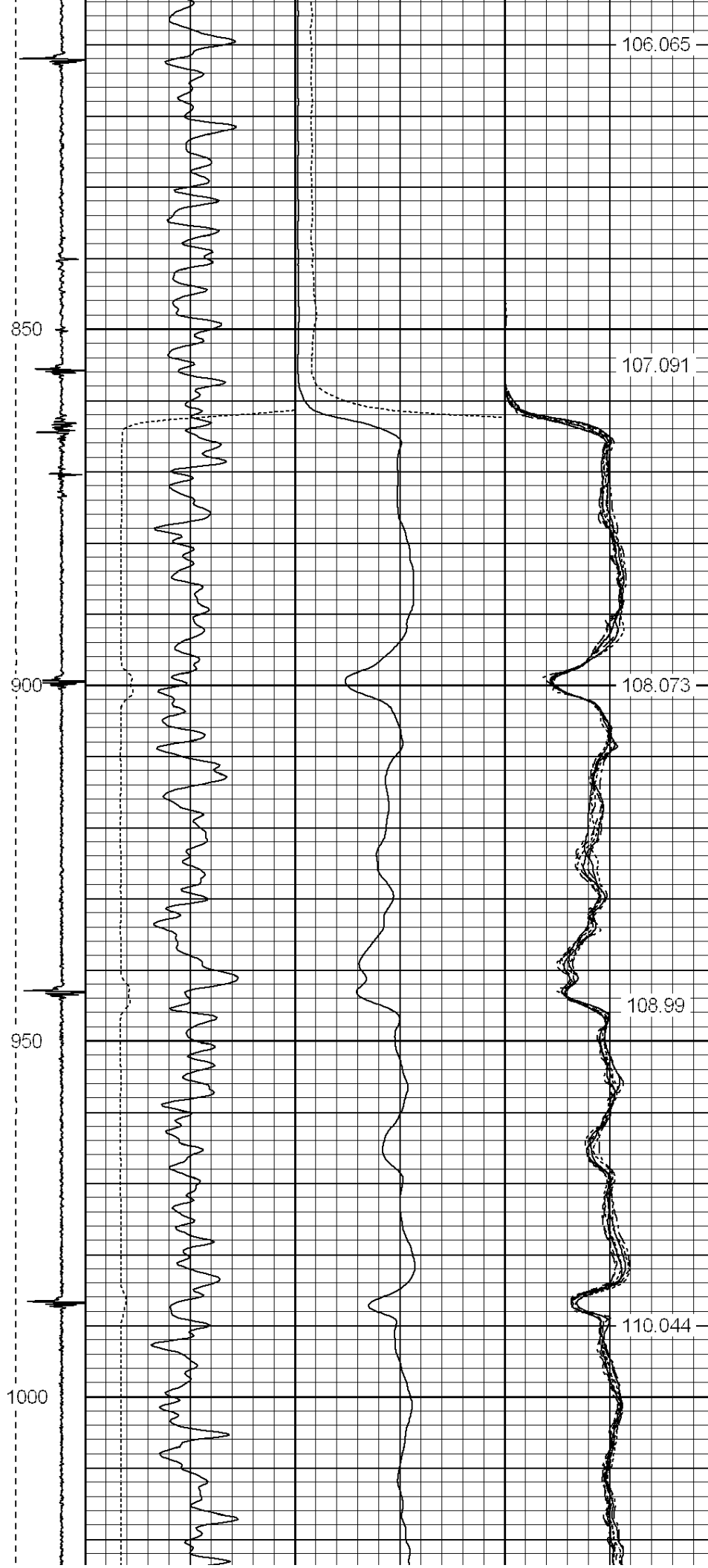
650

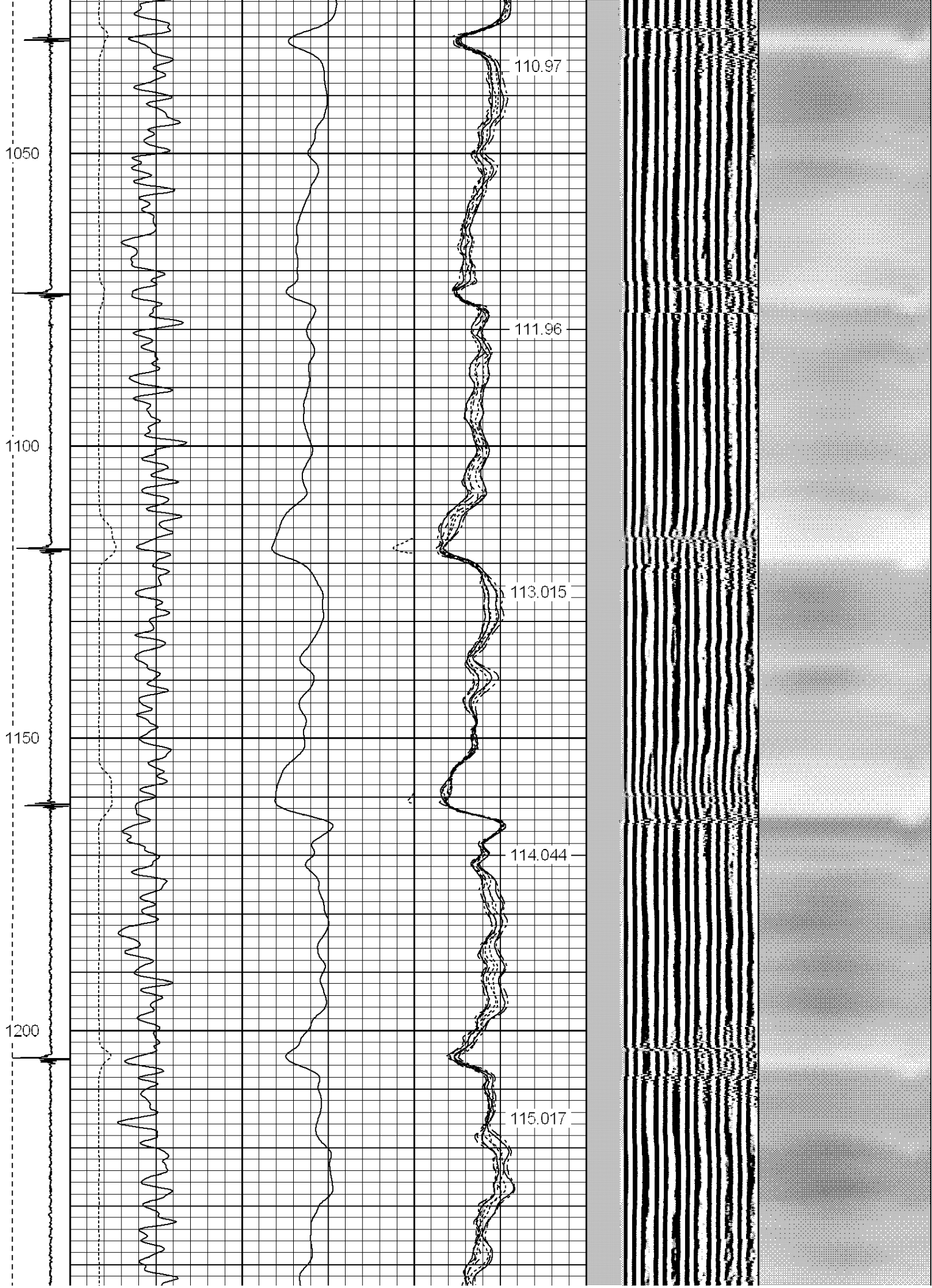
700

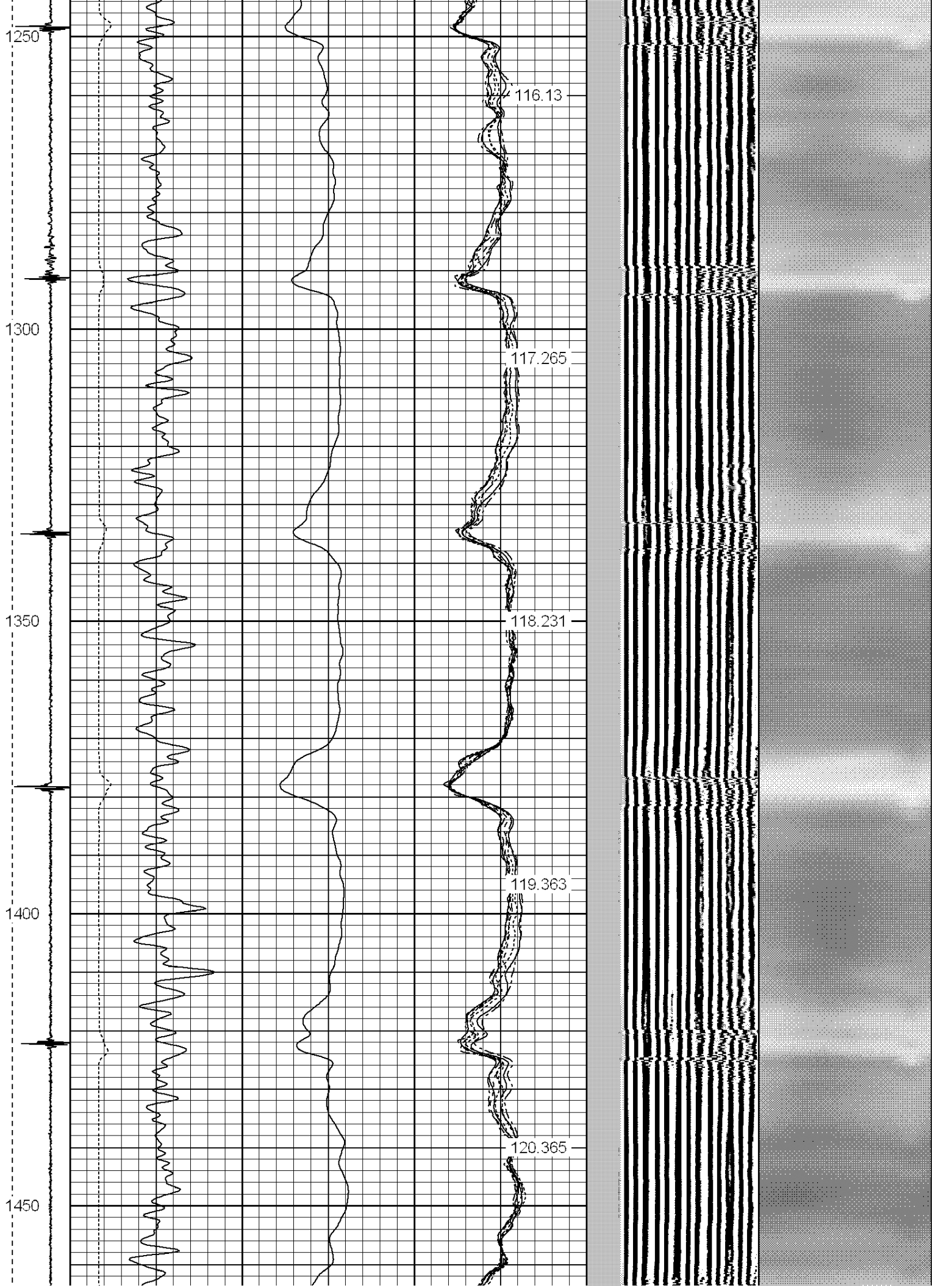
750

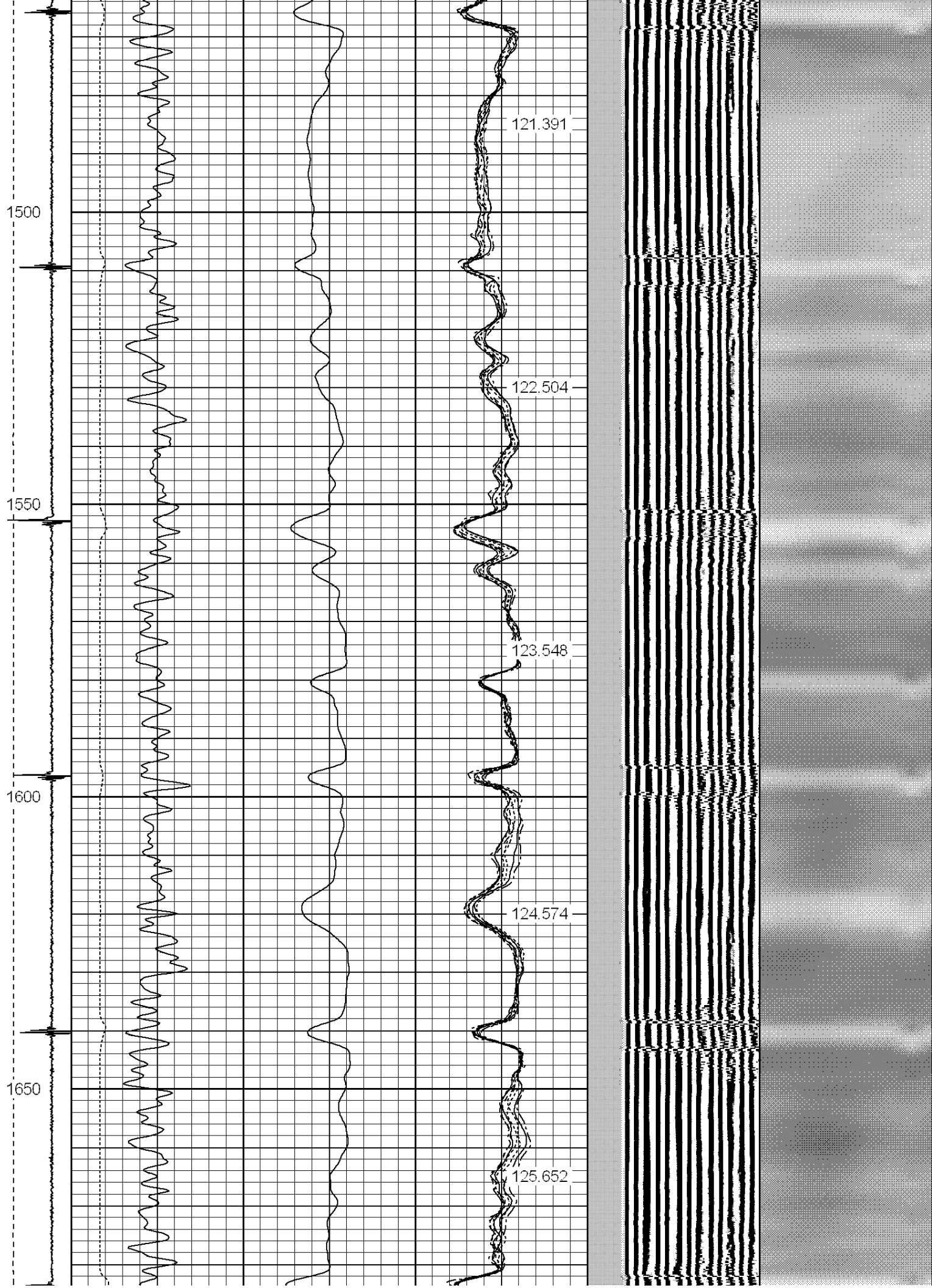
800

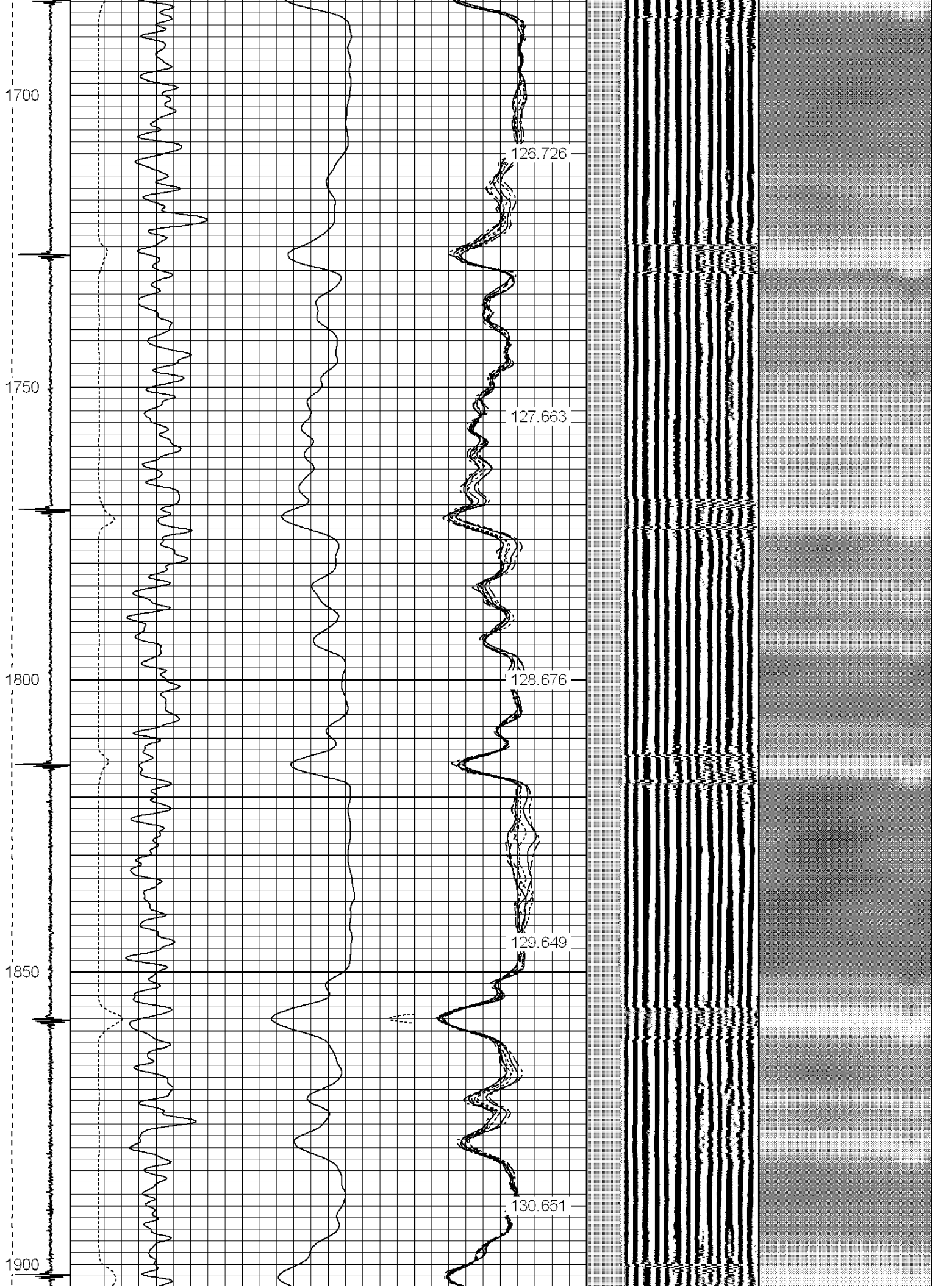
101.339
102.24
103.231
104.239
105.133













2150

2200

2250

2300

136.489

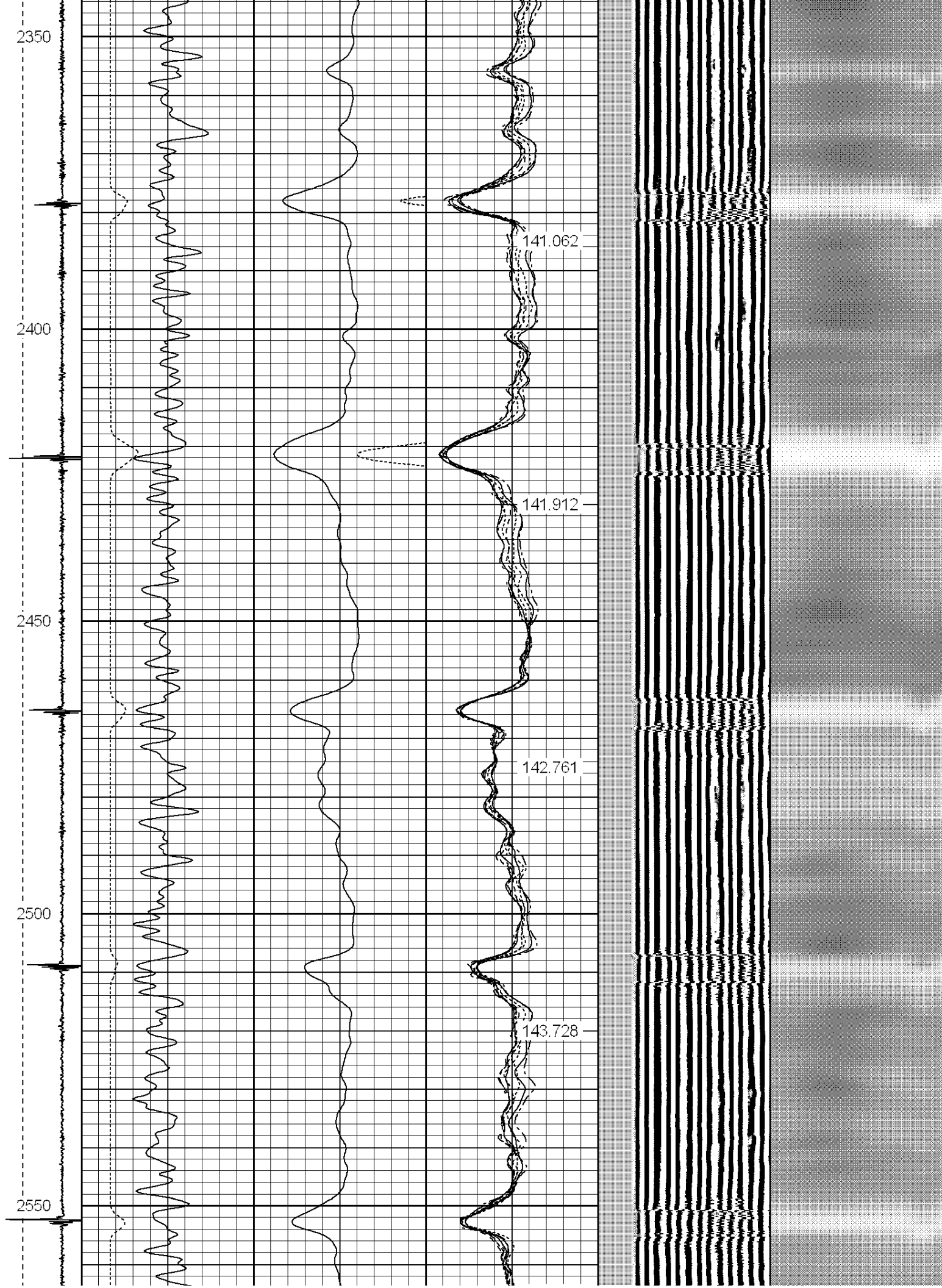
137.385

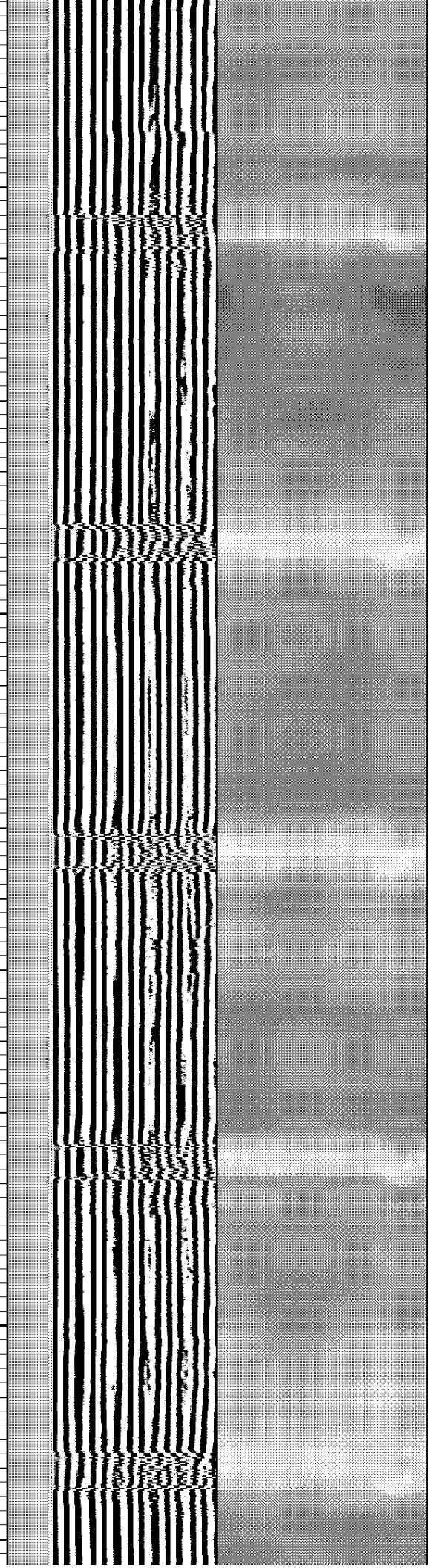
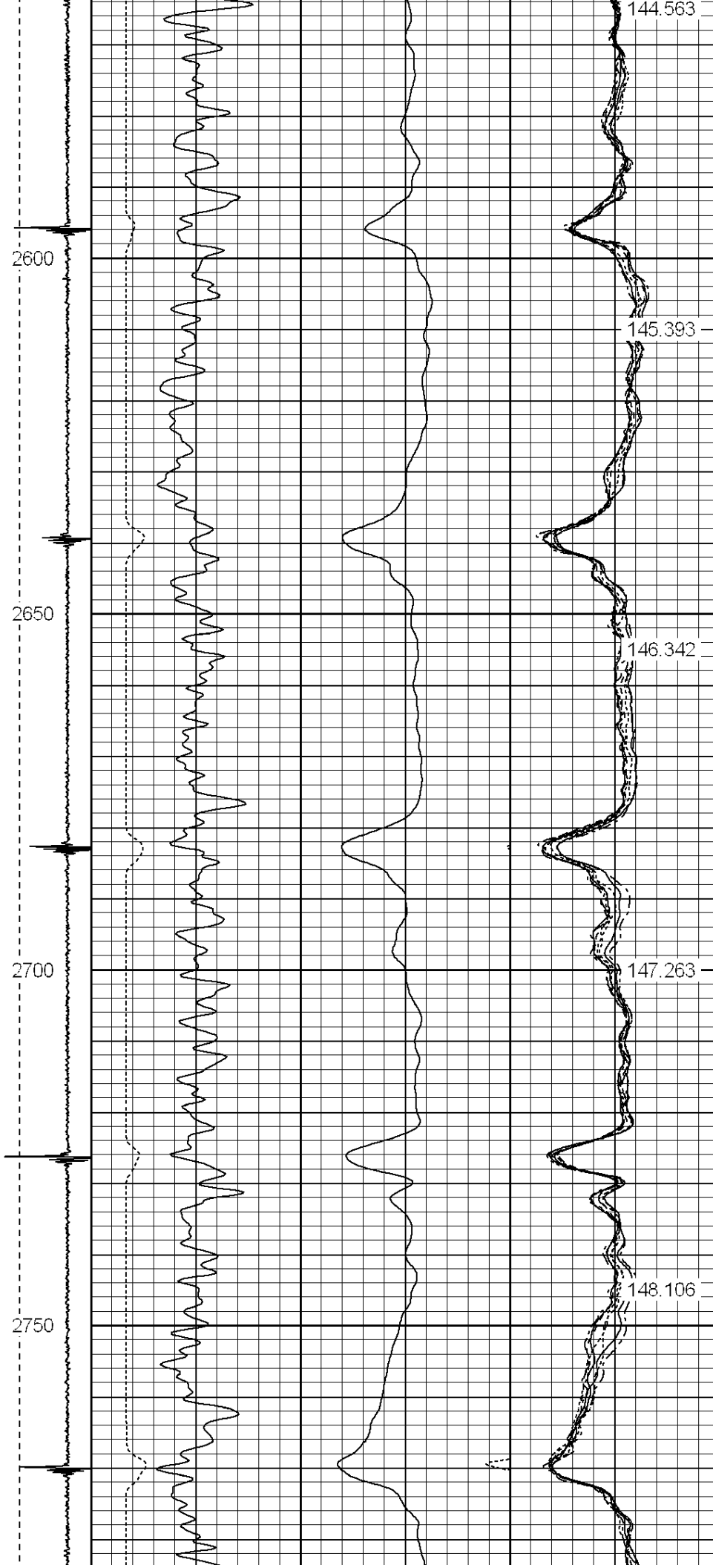
138.302

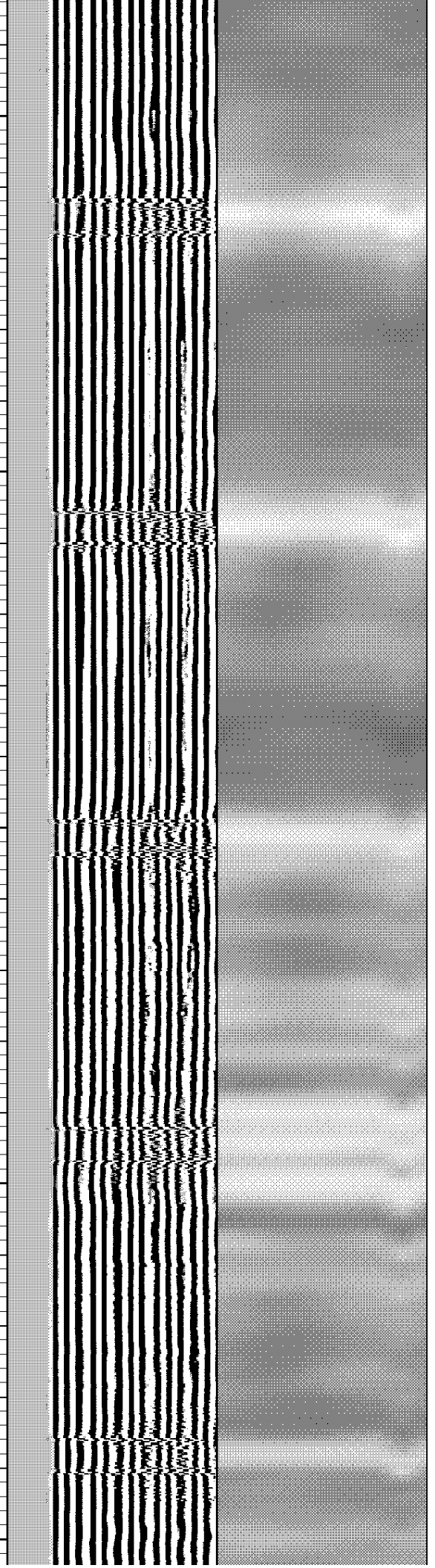
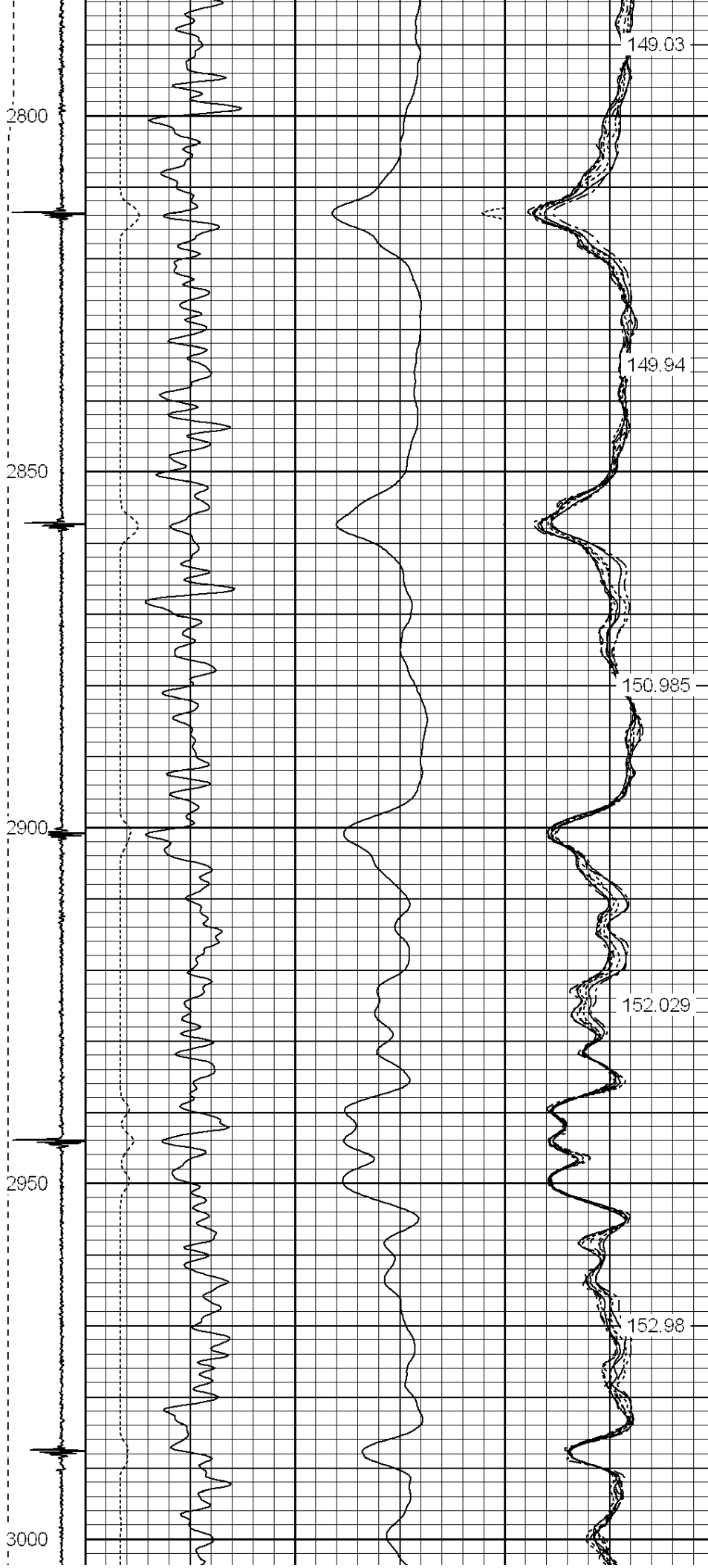
139.184

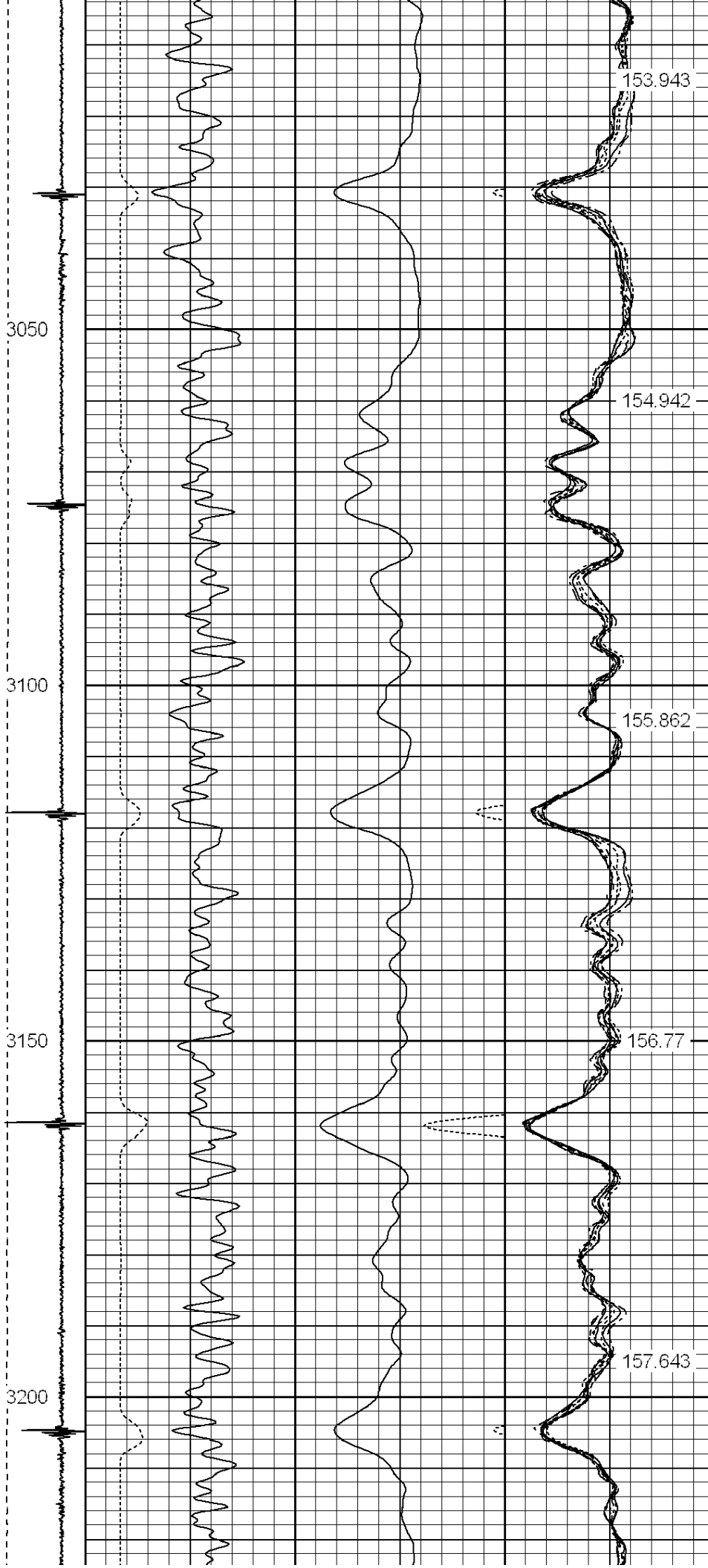
140.111

140.111









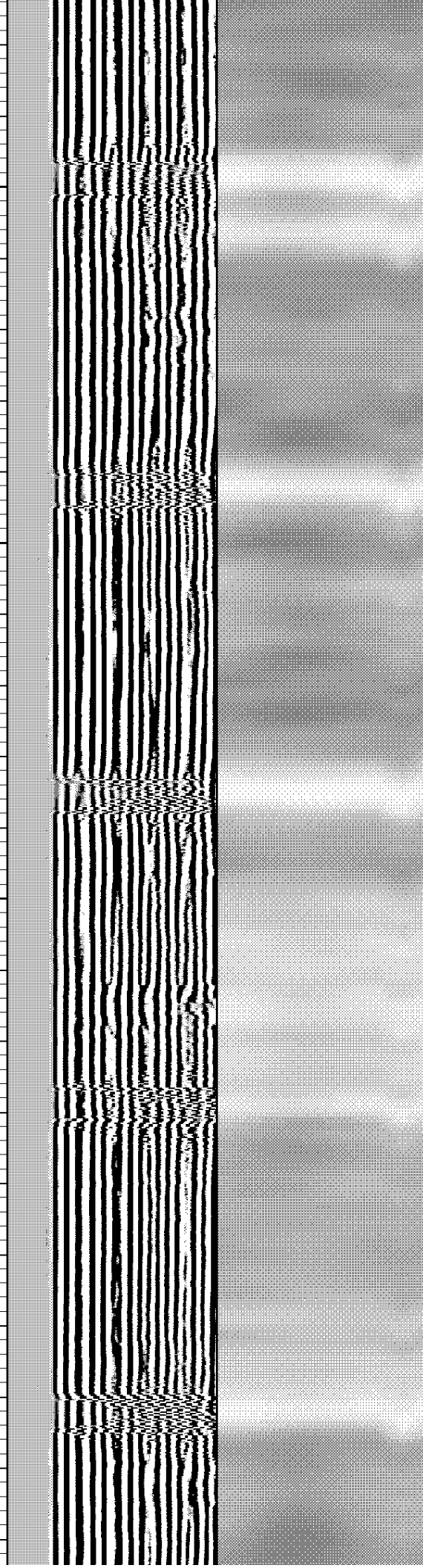
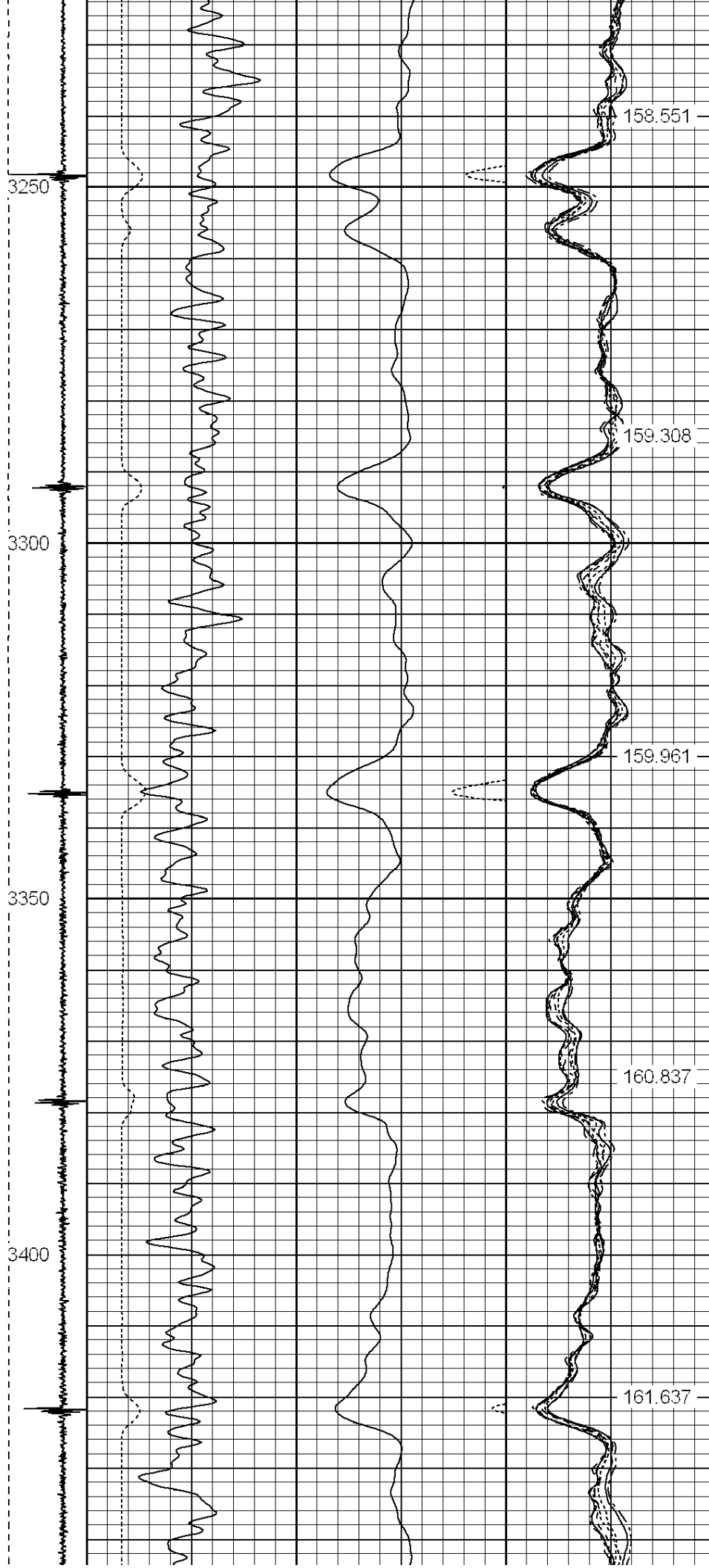
153.943

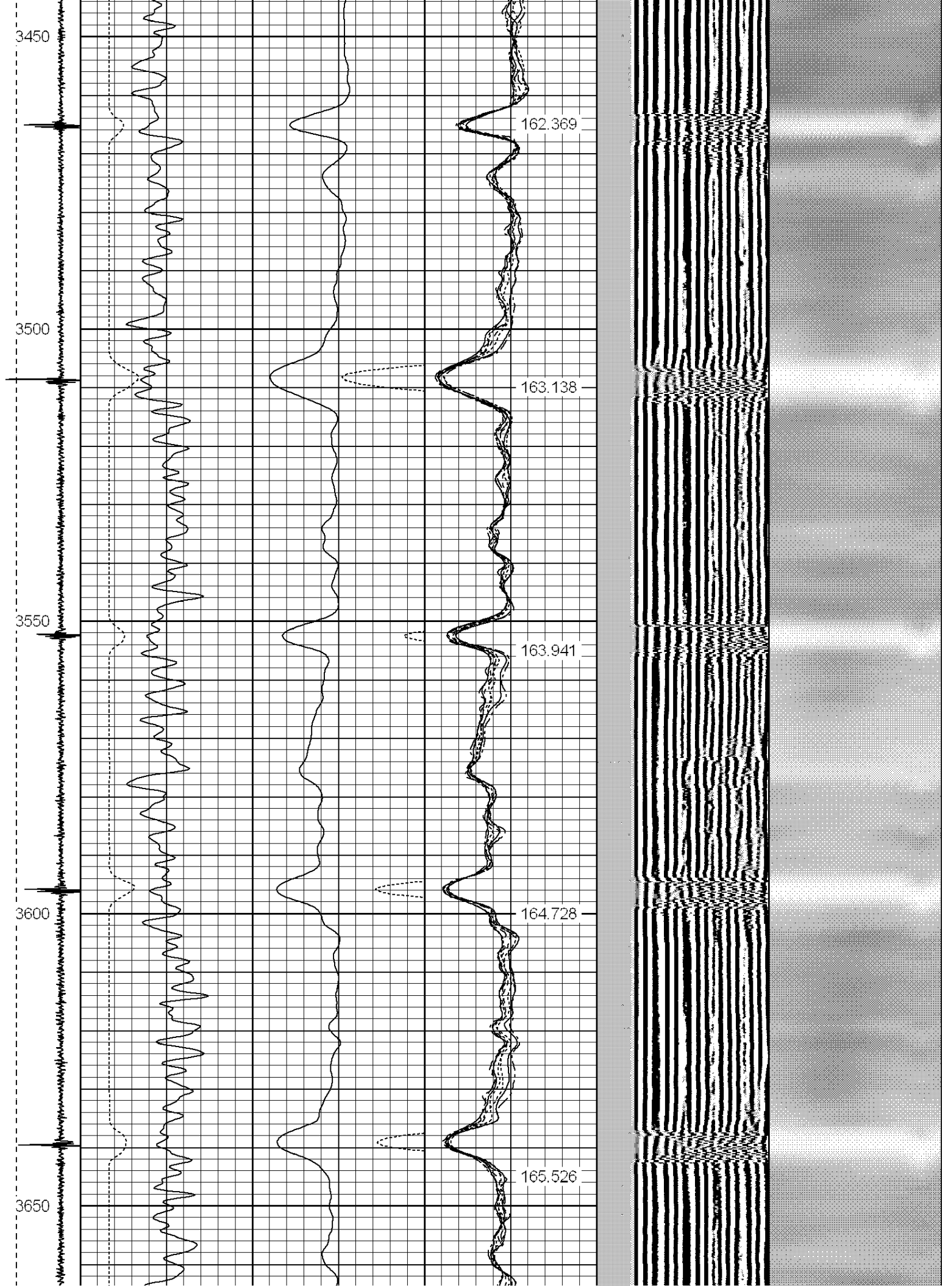
154.942

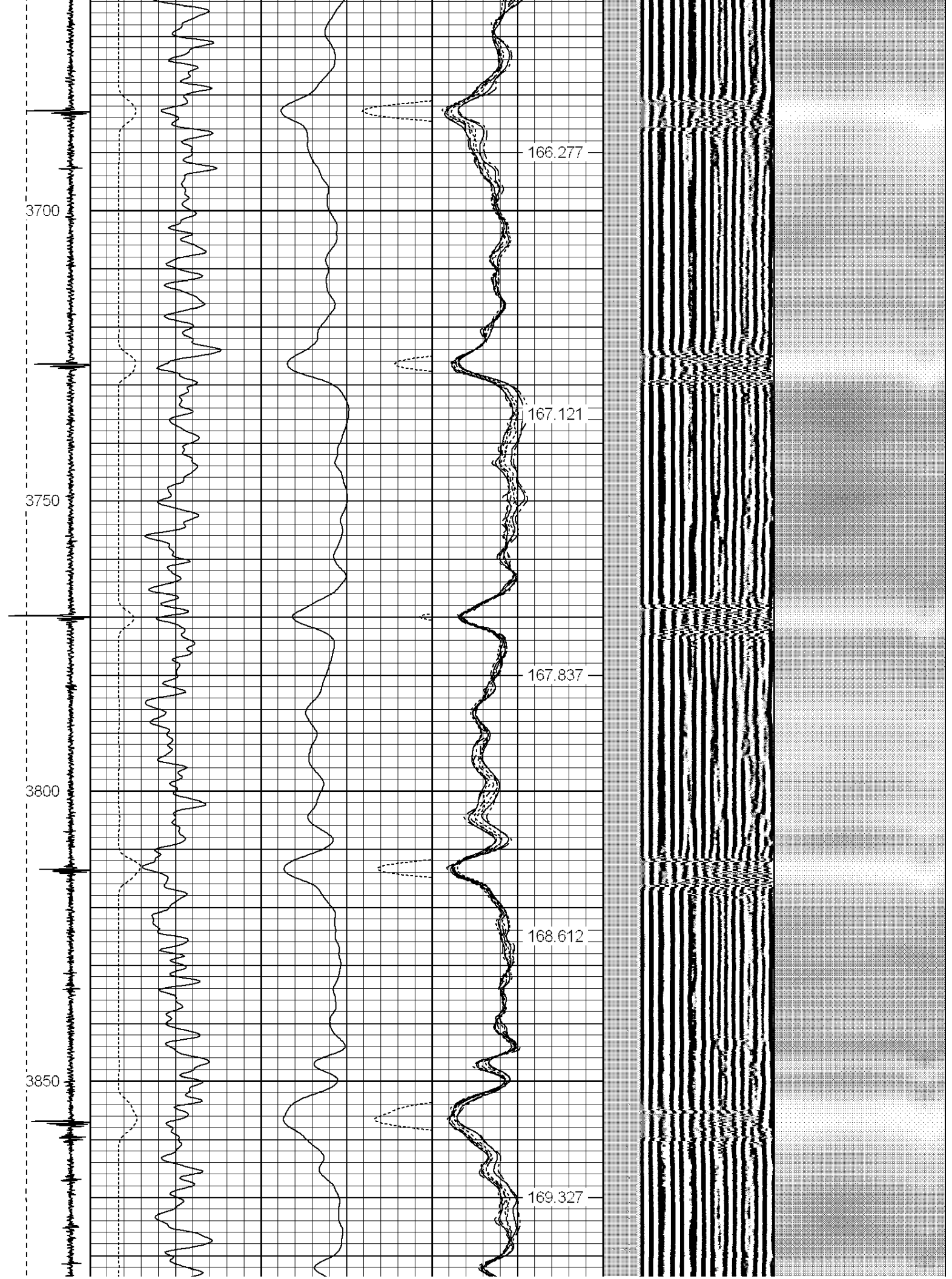
155.862

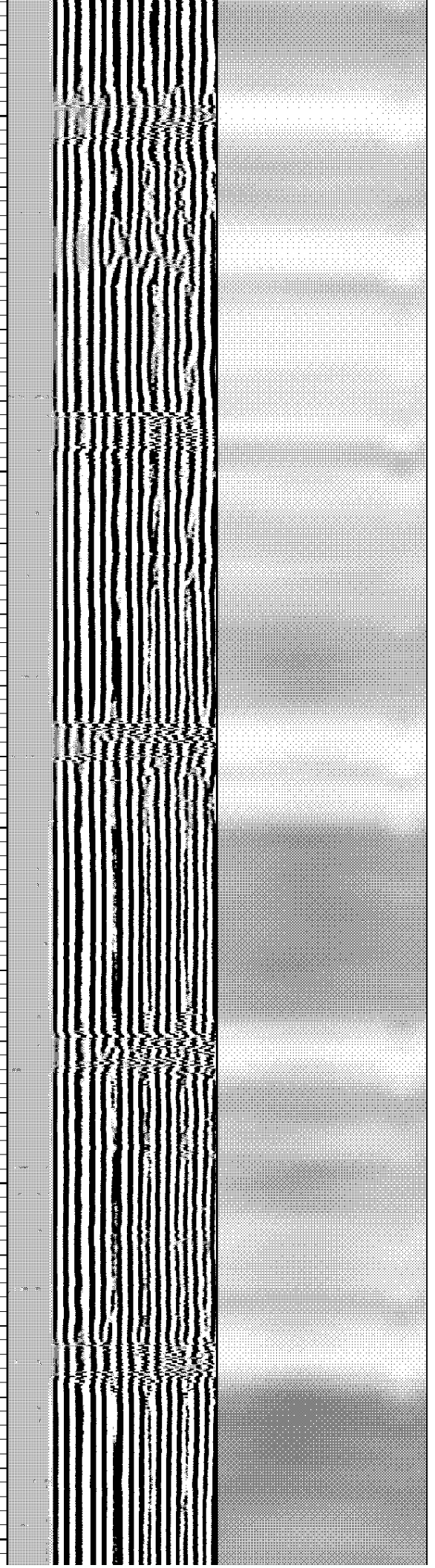
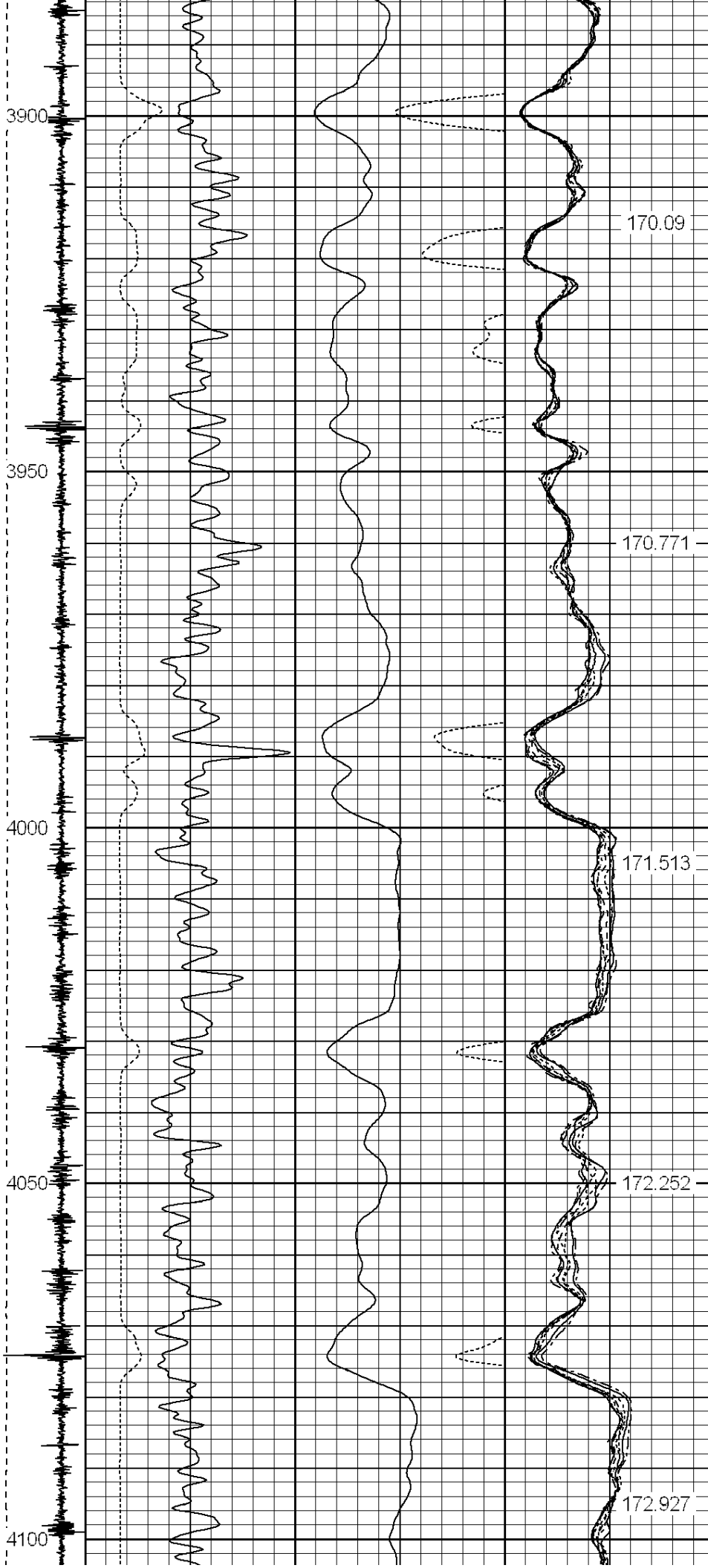
156.77

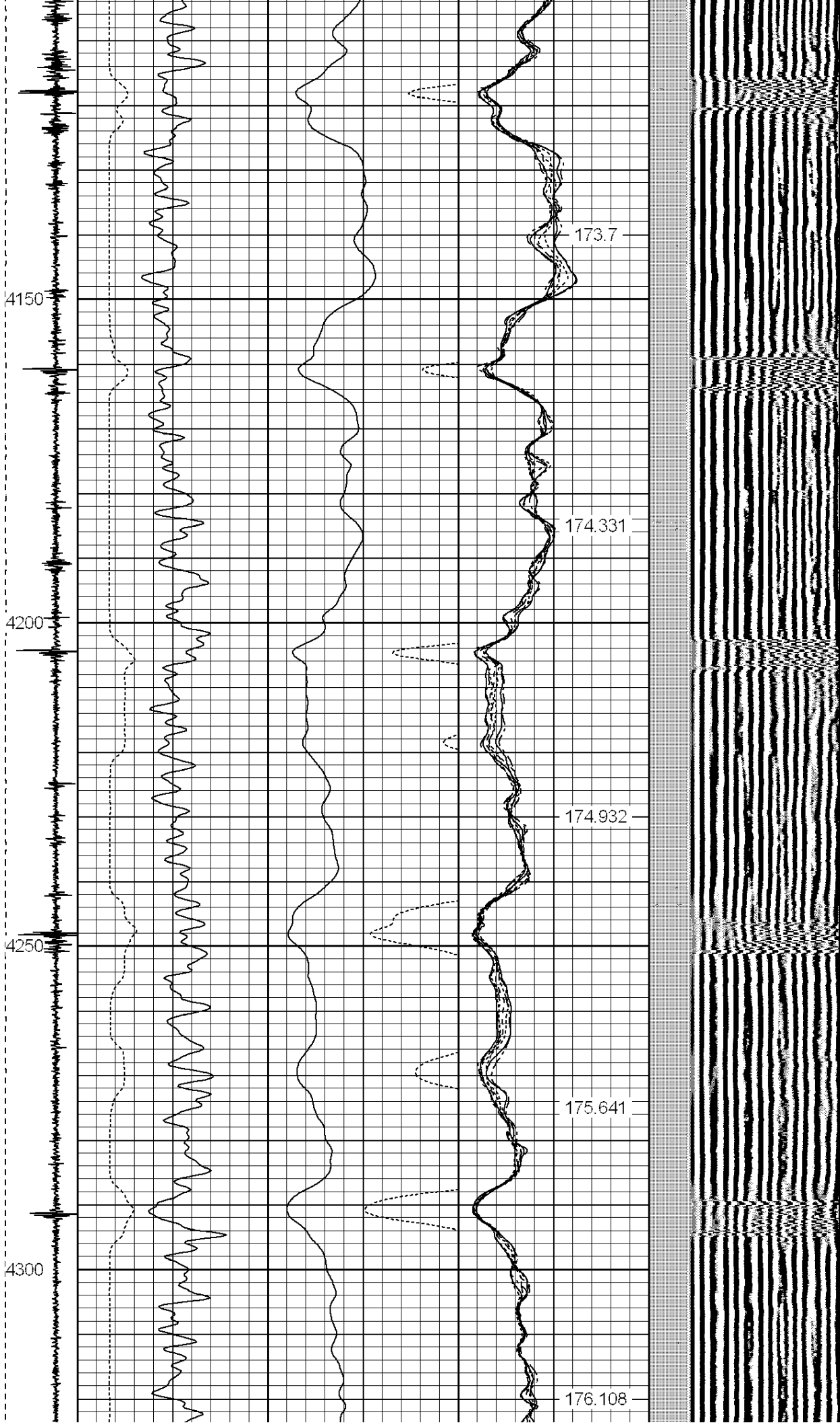
157.643

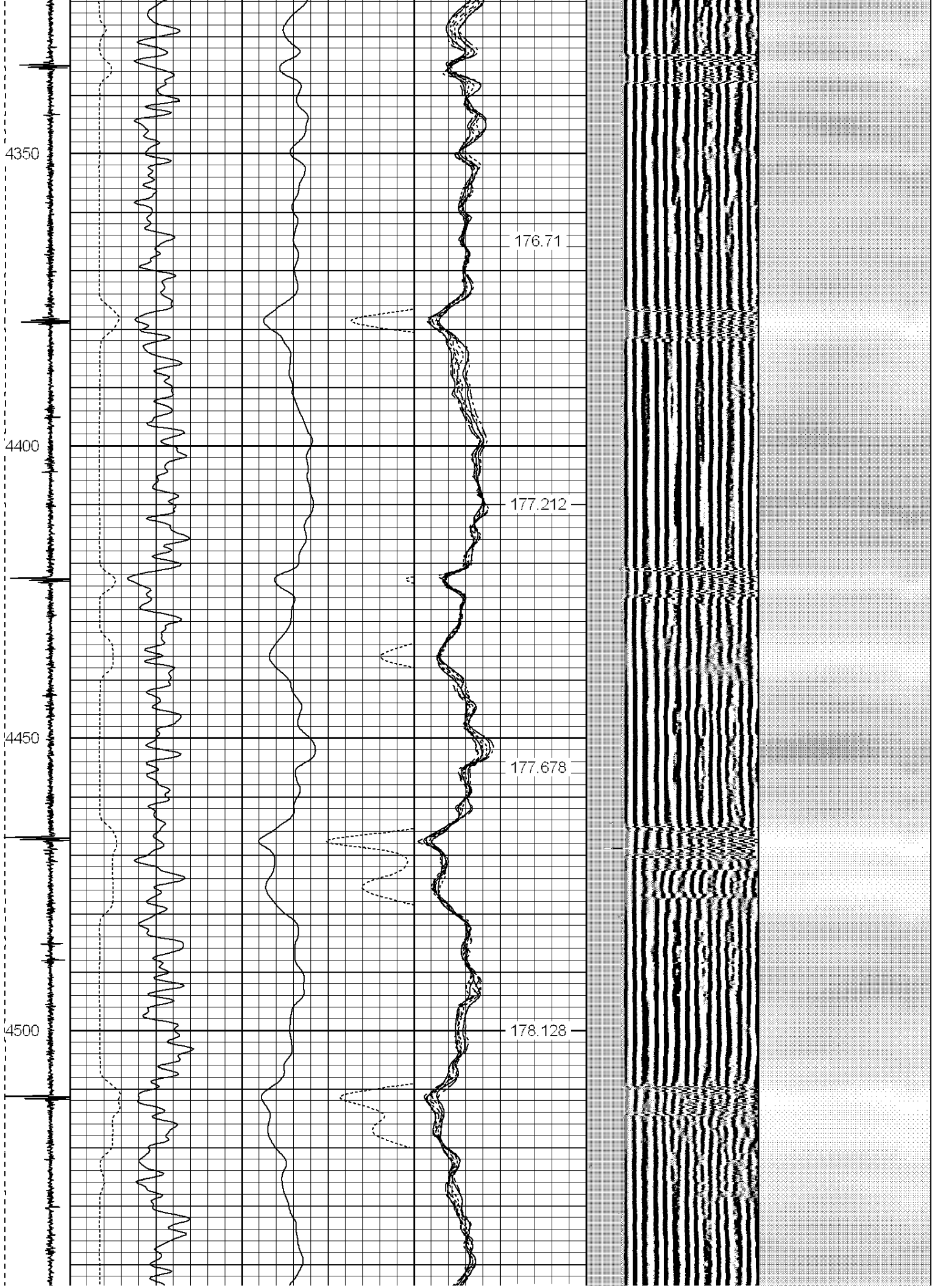


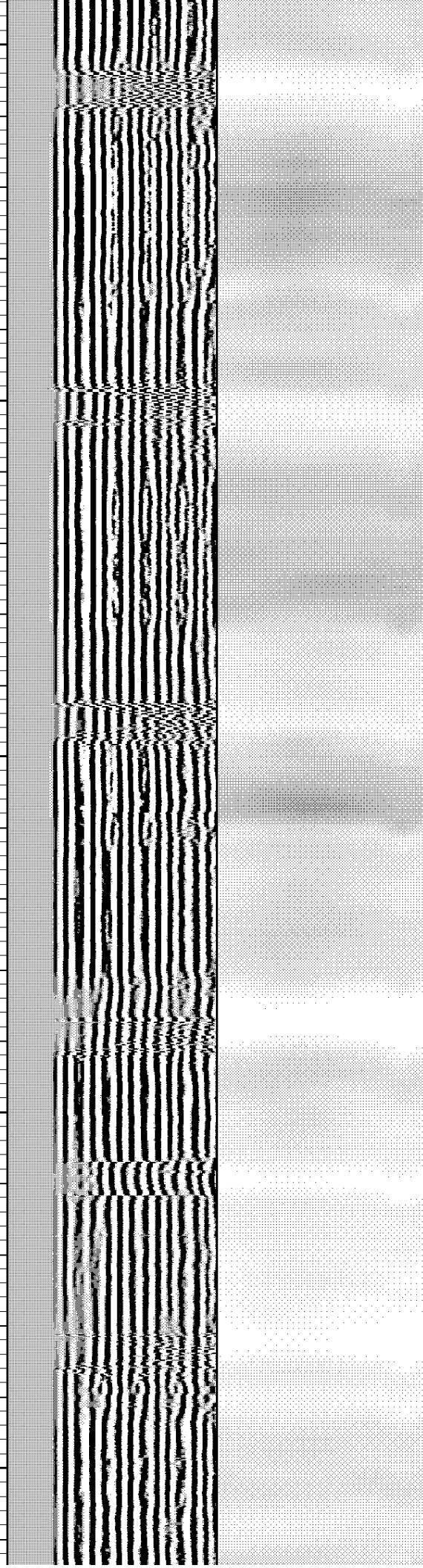
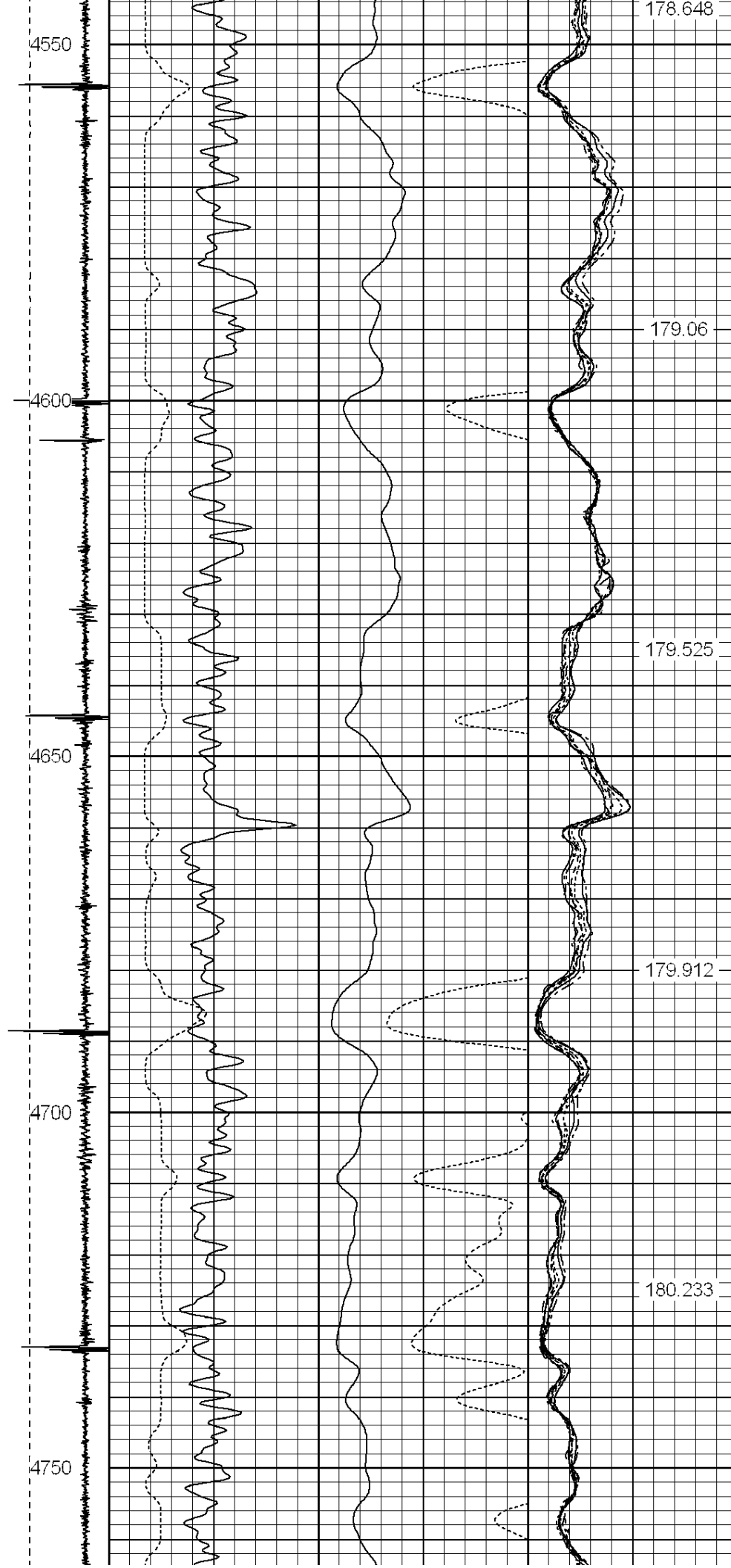


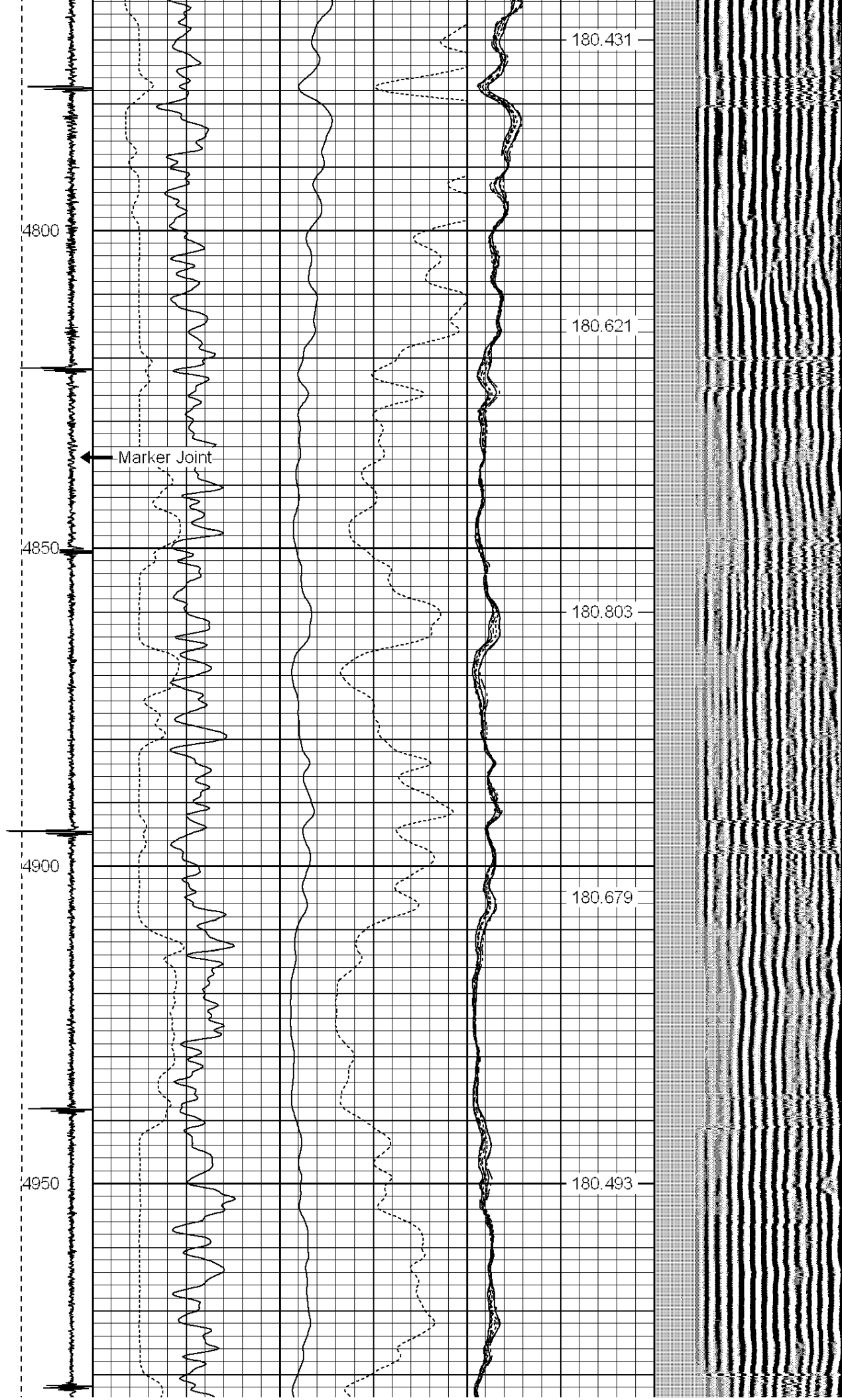


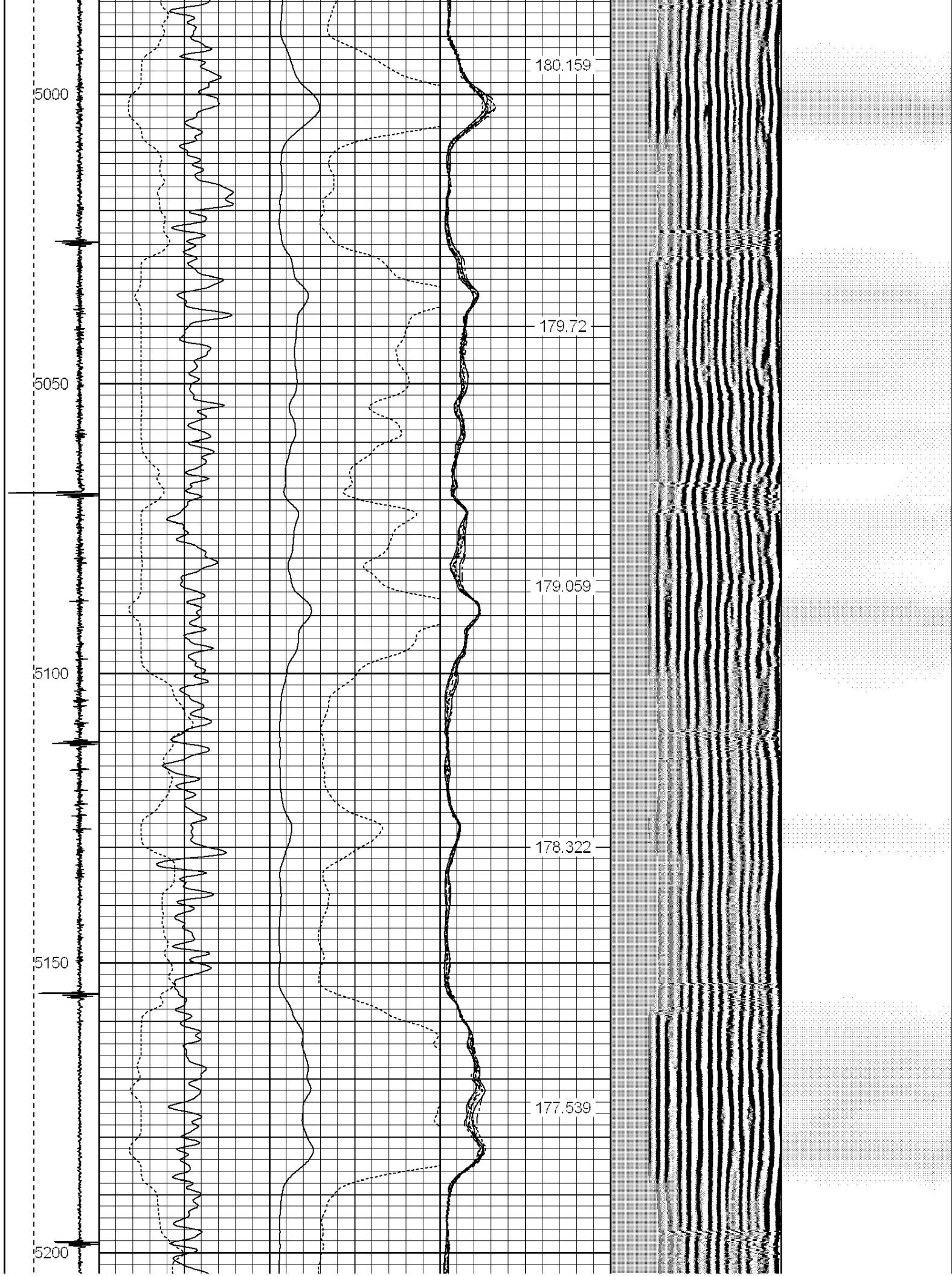


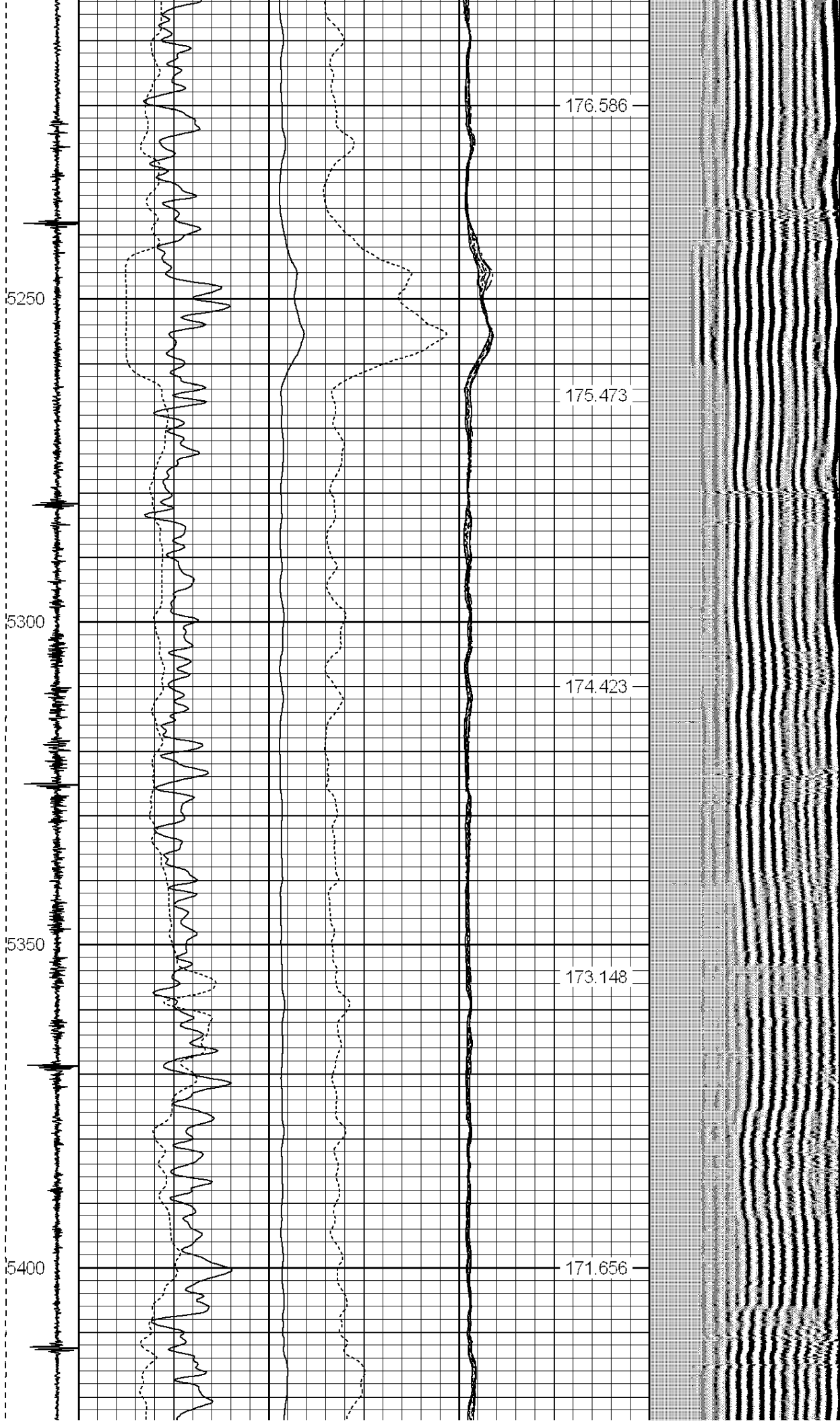












0000

0000

5450

5500

5550

5600

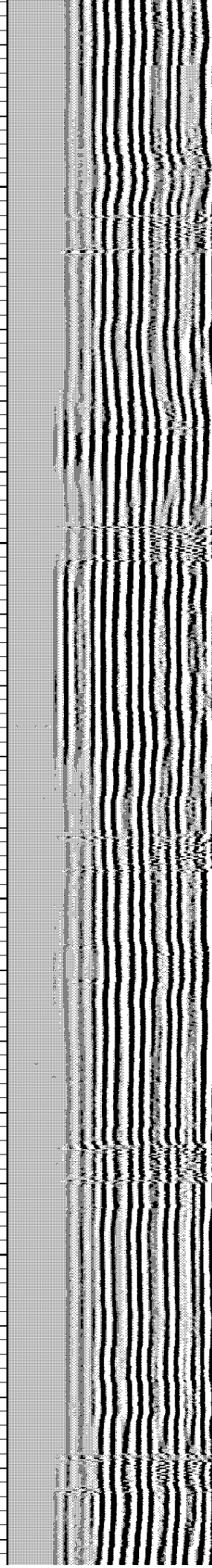
169.901

167.918

165.719

163.085

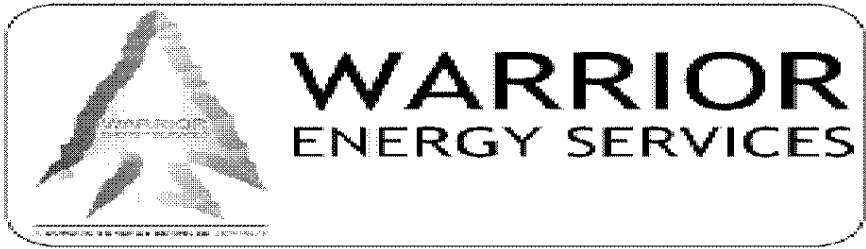
160.076





-4	CCL	1	200	TT (usec)	800	0	AMP (mV)	100	0	AMPS1	100	200	VDL	1200	1	Cement Map	8
LSPD	0	GR (GAPI)	200	0	AMPx5 (mV)	20	0	AMPS2	100						1		100
(ft/min)	200	GR (GAPI)	400					0	AMPS4	100							
0	250							0	AMPS5	100							

0	AMPS6	100
0	AMPS7	100
0	AMPS8	100
IntTemp (degF)		



CompanyBill Barrett Corporation
Well70 Ranch 04-63-3340CH
FieldWattenberg
CountyWeld
StateColorado