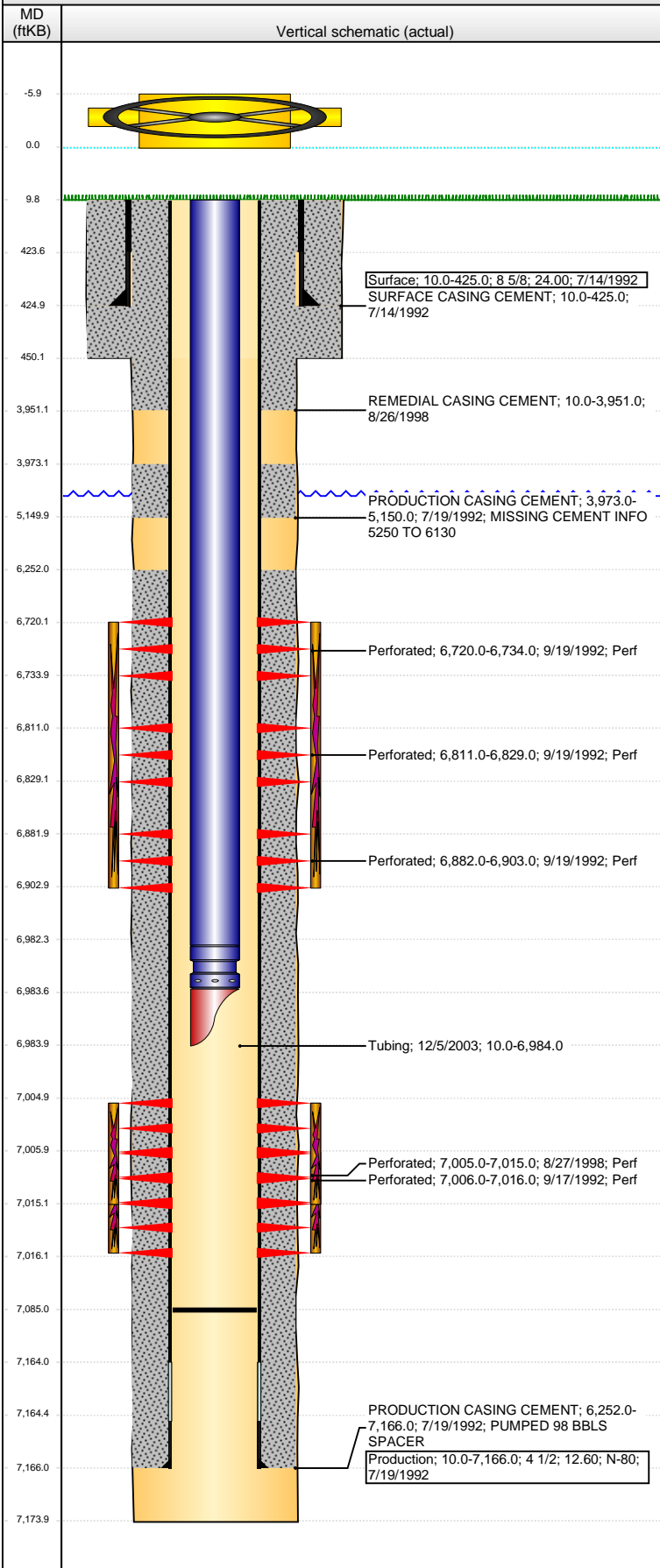


**Well Name: LATHAM 02-43**

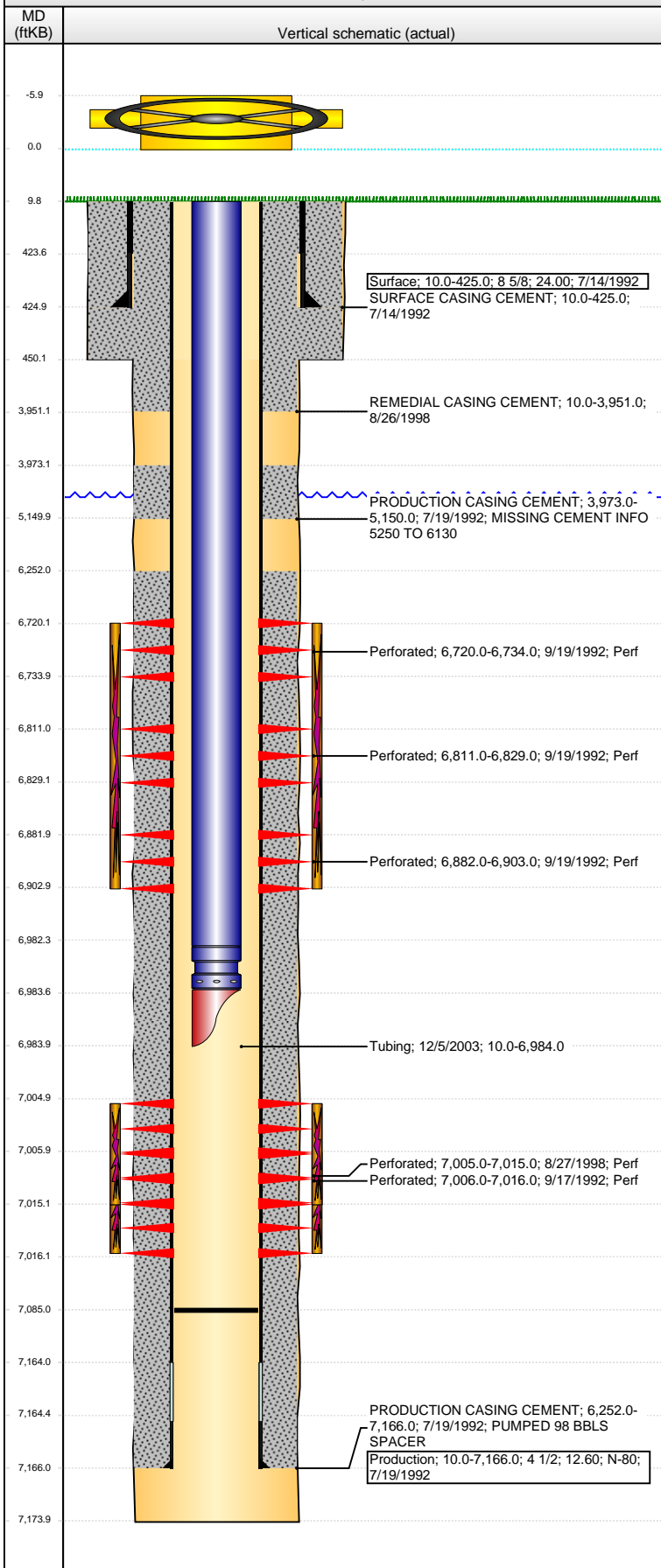
VERTICAL - ORIGINAL HOLE, 4/16/2014 9:23:47 AM



Well Header				
API	Business Unit	District	Well Config	
05-123-15775	WATTENBERG	15	VERTICAL	
Original KB Elevation (ft)	KB - GL / MSL (ftKB)	Spud Date	P & A Date	
4,684.00	10.00	7/14/1992		
Comment				
DISCREPANCY: DR/ST RPT TD 7158'; PROD CSG @ 7166'; LOG/DR RPT TD 7174'				
Directions To Well				
Congressional Location				
Quarter 1	Quarter 2	Quarter 3	Quarter 4	Section
N2	SW	SE		2
Township	Township N...	Range	Rng E/W Dir	
4	N	65	W	
Bottom Hole Location				
North-South Distance (ft)		From N or S Line	East-West Distance (ft)	From E or W Line
Plug Back Total Depths				
Date	Depth (ftKB)	Method	Com	
7/27/1992	7,026.0	CASED HOLE LOG	DEPTH LOGGER ON CBL	
8/5/1993	7,138.0		TAG TO LAND TUBING	
12/5/2003	7,085.0	TAG	TAG TO LAND TUBING	
Wellbore Sections				
Section Des	Size (in)	Act Top, MD (ftKB)	Act Btm, MD (ftKB)	
SURFACE	12 1/4	10.0	450.0	
PRODUCTION	7 7/8	450.0	7,174.0	
Zone Statuses				
Zone Name	Status Date	Status	Job	
NIOBRARA	9/26/1992	PR	DRILLING/COMPLETION - ORIGINAL, 7/14/1992 00:00	
CODELL	9/26/1992	PR	DRILLING/COMPLETION - ORIGINAL, 7/14/1992 00:00	
CODELL	9/6/1998	PR	RE-FRAC, 8/22/1998 00:00	
CODELL	12/8/2003	PR	TRI-FRAC, 11/27/2003 00:00	
Casing Strings				
Surface, 425.0ftKB				
Casing Description	Run Date	OD (in)	Wt/Len (l...)	Grade
Surface	7/14/1992	8 5/8	24.00	N-80
Top, MD (ft...)	MD (ftKB)			
10.0	425.0			
Production, 7,166.0ftKB				
Casing Description	Run Date	OD (in)	Wt/Len (l...)	Grade
Production	7/19/1992	4 1/2	12.60	N-80
Top, MD (ft...)	MD (ftKB)			
10.0	7,166.0			
Cement				
Description	Top Depth (ftKB)	Bottom Depth (ftKB)		
SURFACE CASING CEMENT	10.0	425.0		
Description	Top Depth (ftKB)	Bottom Depth (ftKB)		
PRODUCTION CASING CEMENT	3,973.0	5,150.0		
Description	Top Depth (ftKB)	Bottom Depth (ftKB)		
PRODUCTION CASING CEMENT	6,252.0	7,166.0		
Description	Top Depth (ftKB)	Bottom Depth (ftKB)		
REMEDIAL CASING CEMENT	10.0	3,951.0		
Tubing Components				
Item Des	OD (in)	Wt (lb/ft)	Grade	Jts
Tubing	2 3/8			227
Seal Nipple	2 3/8			1
Mule Shoe	2 3/8			1
Len (ft)	Btm (ftKB)	Btm (TVD) (ftKB)		
6,972.40	6,982.4			
1.10	6,983.5			
0.50	6,984.0			
Perforation Data				
Zone	Bnch/St g	Entered Shot Total	Top (ftKB)	Btm (ftKB)
NIOBRARA, ORIGINAL HOLE	A	4	6,720.00	6,734.00
NIOBRARA, ORIGINAL HOLE	B	8	6,811.00	6,829.00
NIOBRARA, ORIGINAL HOLE	C	4	6,882.00	6,903.00
CODELL, ORIGINAL HOLE		40	7,005.00	7,015.00
CODELL, ORIGINAL HOLE		40	7,006.00	7,016.00
Date	Zone	Primary Job Type		
9/22/1992	NIOBRARA, ORIGINAL HOLE	DRILLING/COMPLETION - ORIGINAL		
Technical Result		Tech Result Details		Tech Result Note
Comment				

**Well Name: LATHAM 02-43**

VERTICAL - ORIGINAL HOLE, 4/16/2014 9:23:50 AM



## Stimulations & Treatments

Date	9/22/1992	Zone	CODELL, ORIGINAL HOLE	Primary Job Type	DRILLING/COMPLETION - ORIGINAL
Technical Result		Tech Result Details		Tech Result Note	

Comment

Date	9/2/1998	Zone	CODELL, ORIGINAL HOLE	Primary Job Type	RE-FRAC
Technical Result		Tech Result Details		Tech Result Note	

Comment

Date	12/4/2003	Zone	CODELL, ORIGINAL HOLE	Primary Job Type	TRI-FRAC
Technical Result		Tech Result Details		Tech Result Note	

Comment

## Other In Hole

Run Date	Des	OD (in)	Top (ftKB)	Btm (ftKB)

## Logs

Date	Type	Top, MD (ftKB)	Btm, MD (ftKB)
7/19/1992	COMPENSATED DENSITY	410.0	7,180.0
7/19/1992	INDUCTION	410.0	7,180.0
7/27/1992	CEMENT BOND	3,850.0	7,022.0
3/11/2011	GYRO	10.0	6,900.0