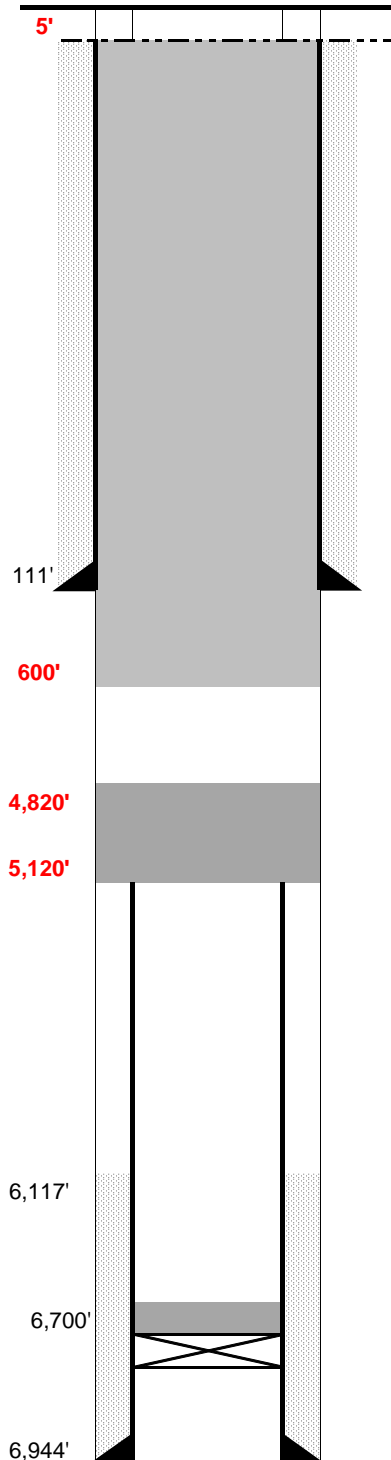


WELL NAME: Huston #1
OPERATOR: Lowell Williamson, Inc.
COMP ZONE: J Sand
LOCATION: 8N 60W S25 SW NE

COUNTY: Weld
STATE: Colorado
API : 05-123-05511
GL/KB: 6/7/1913

SPUD: 9/20/55
COMP: 10/3/55
ABDN: 12/12/55
COGCC: DA



SURFACE CASING

DEPTH: 111' SIZE: 10.75" GRADE: WT (#/ft): 32.8
CEMENT: 200 sx
COMMENTS:

PRODUCTION CASING

DEPTH: 6944' SIZE: 5.5" GRADE: WT (#/ft): 15.5
CEMENT: 250 sx TOC: 6117' est
COMMENTS:

PERFS: 6808' - 6822' PROD ZONE 1: D Sand
PERFS: - ZONE 2:
PERFS: - ZONE 3:

PREVIOUS PLUGS

ZONE 1 CIBP: 6,700' CMT: 2 sx OTHER:
2 CIBP: CMT: OTHER:
3 CIBP: CMT: OTHER:

RECOVERED: 4,500' SIZE: 5.5"
CMT 1: 151' - 71' COMMENT: 35 sx - half in/half out surf csg
CMT 2: 0' - 30' COMMENT: 10 sx - surface
CMT 3: - COMMENT:

PROPOSED: Plug #1: 300' cement plug from 4500' to 4200' (top of casing stub)
Plug #2: 600' cement from 600' to surface to isolate FW zones

FORMATIONS:

NIOBRARA: 6077'
CARLILE 6,390'
D SAND: 6,804'
J SAND: 6,892'