

MD 2712 TVD 2709.03
INC 1.1 AZ 248.3
VS 55.64

MD 2807 TVD 2804.01
INC 1.2 AZ 253.7
VS 54.66

MD 2902 TVD 2898.99
INC 1.2 AZ 250.6
VS 53.68

ROP (Feet)
Gamma Ray

2000
160

2750

2800

2850

2900

2700'- 2800': SS: 75% LTGY
-MEDLTGY, FRI, FN TO MED GRN,
WSRTD, CALC CMT, IMBD PYR,
SILTY, INTGR POR, NO STN, NO
MIN FLOR, NO O FLOR, NO CUT, NO
RNG

Pierre (2800' MD - 2900' MD)



2800'- 2900': SS: 80% LTGY
-MEDLTGY, FRI, FN TO MED GRN,
WSRTD, CALC CMT, IMBD PYR,
SILTY, INTGR POR, NO STN, NO
MIN FLOR, NO O FLOR, NO CUT, NO
RNG

DEPTH 2761'

WT 8.95 CG 34u

VIS 30

PH 10.3

FIL 34.6

CL 1600

CAL 60

H2O 96.4

OIL 0.0

LGS 18.6

GELS 1/2/3

PV 4

YP 4

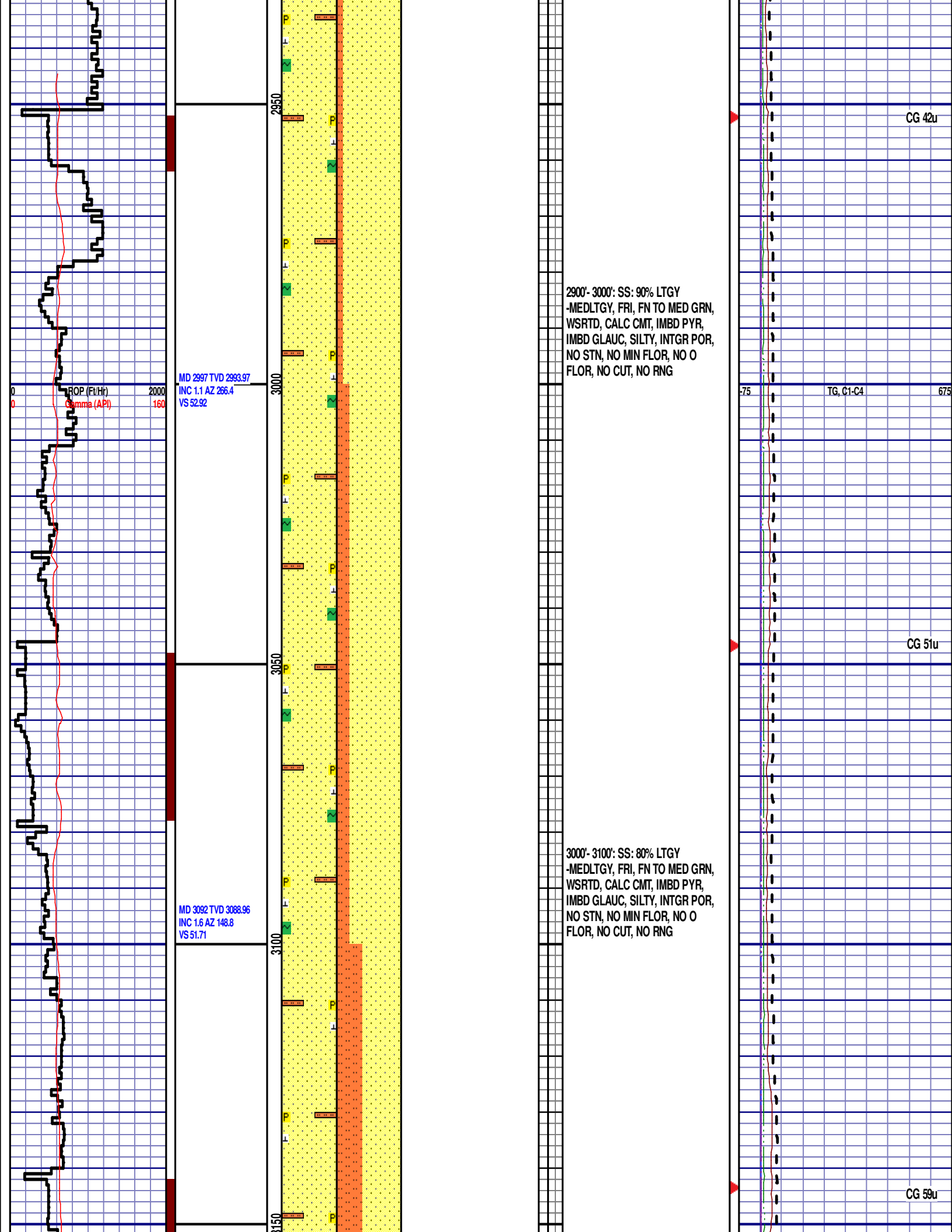
CK 1/0

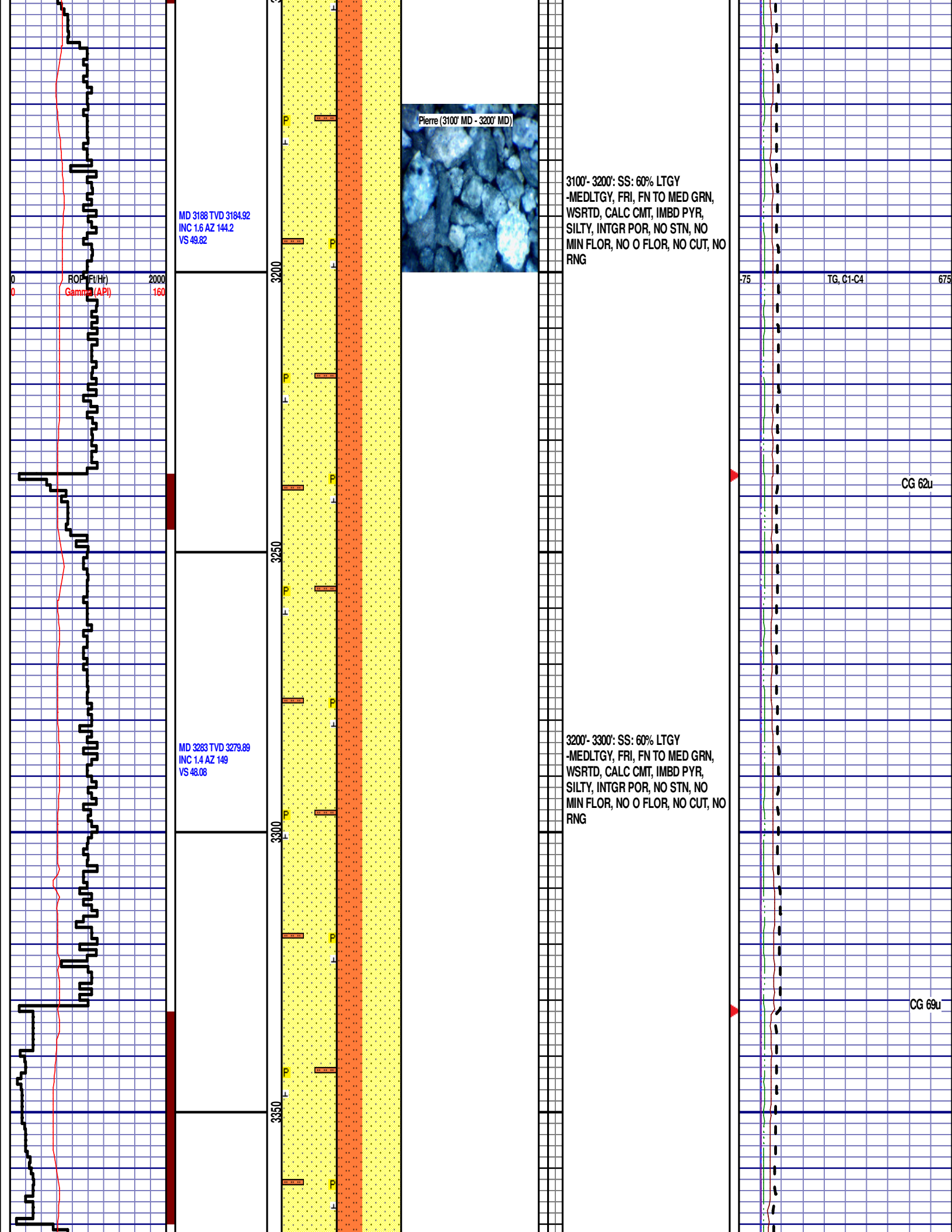
SOL 3.3

TG, C1-C4

675

CG 37u





MD 3188 TVD 3184.92
INC 1.6 AZ 144.2
VS 49.82

ROP (ft/hr)
Gamma (API)

MD 3283 TVD 3279.89
INC 1.4 AZ 149
VS 48.08

Pierre (3100' MD - 3200' MD)

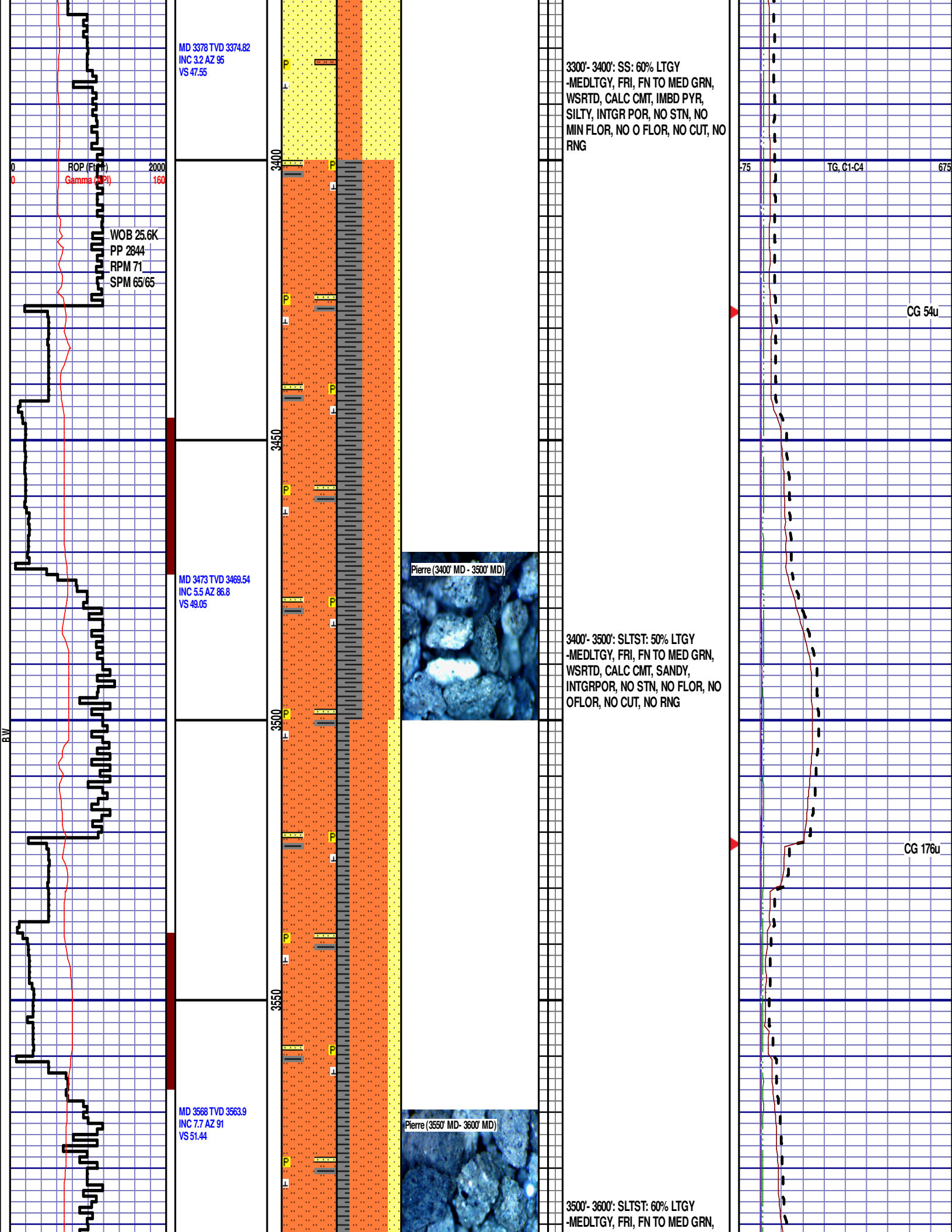
3100'- 3200': SS: 60% LTGY
-MEDLTGY, FRI, FN TO MED GRN,
WSRTD, CALC CMT, IMBD PYR,
SILTY, INTGR POR, NO STN, NO
MIN FLOR, NO O FLOR, NO CUT, NO
RNG

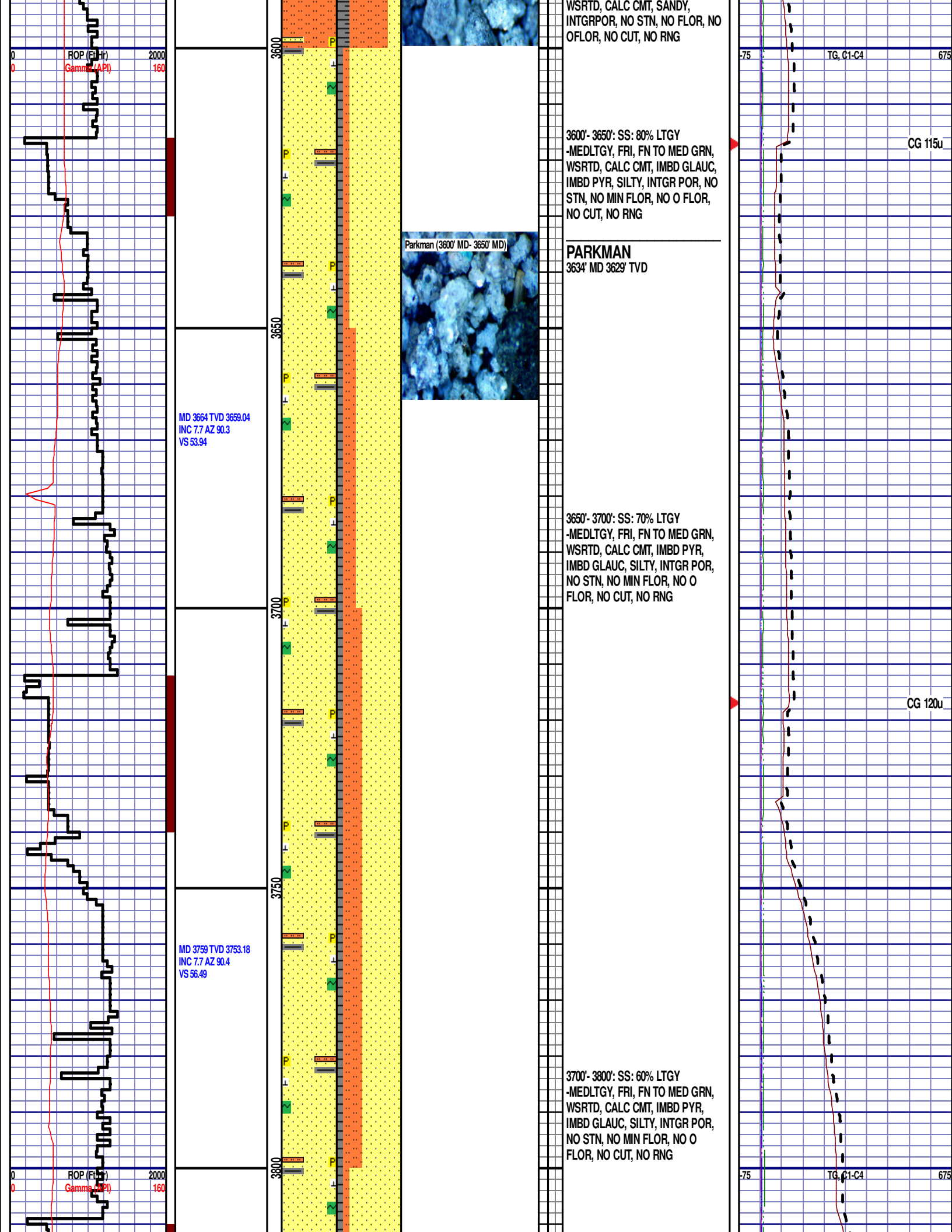
3200'- 3300': SS: 60% LTGY
-MEDLTGY, FRI, FN TO MED GRN,
WSRTD, CALC CMT, IMBD PYR,
SILTY, INTGR POR, NO STN, NO
MIN FLOR, NO O FLOR, NO CUT, NO
RNG

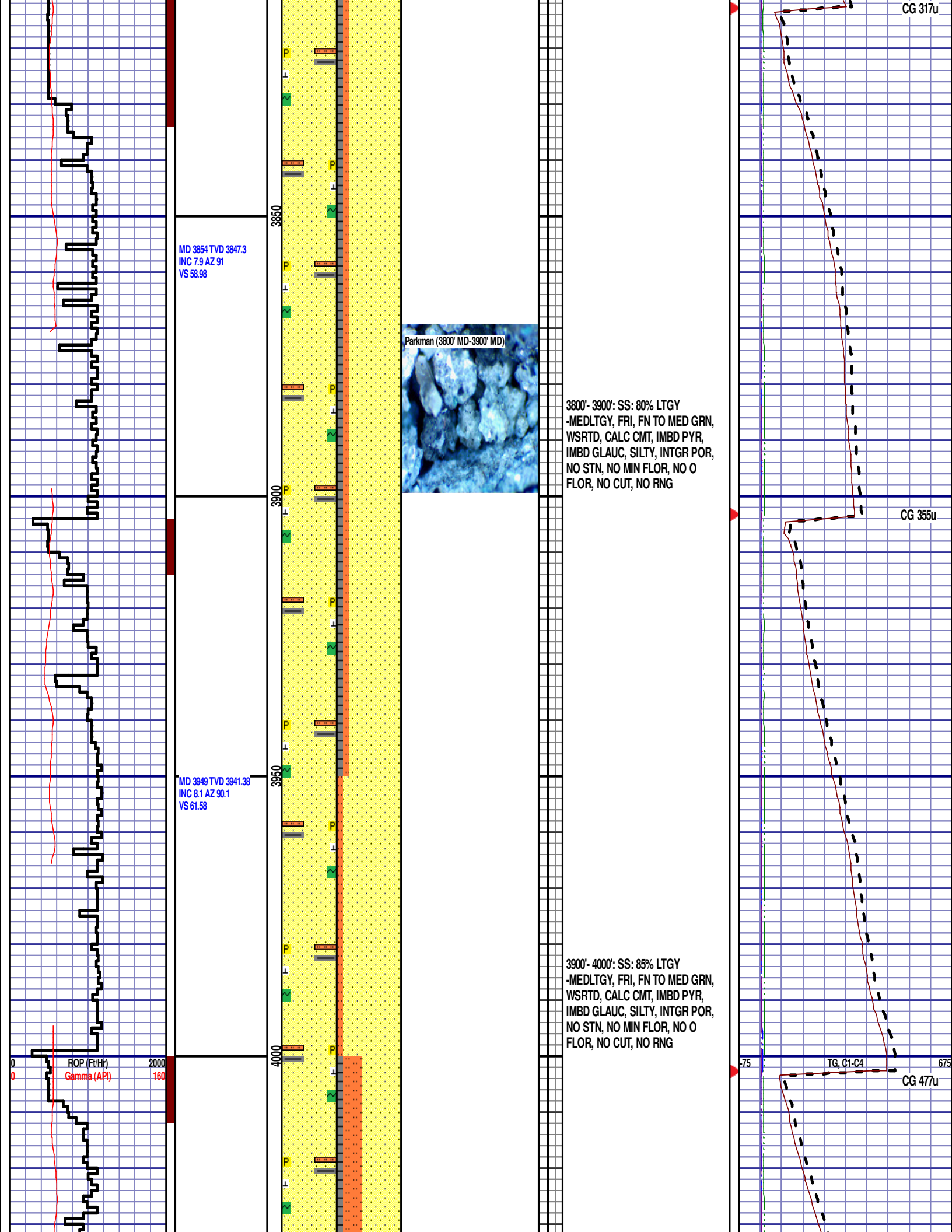
TG, C1-C4

CG 62u

CG 69u







MD 4044 TVD 4035.43
INC 8.1 AZ 91.7
VS 64.13

MD 4140 TVD 4130.5
INC 7.9 AZ 89
VS 66.8

MD 4235 TVD 4224.67
INC 7.2 AZ 89.4
VS 69.54

4050

4100

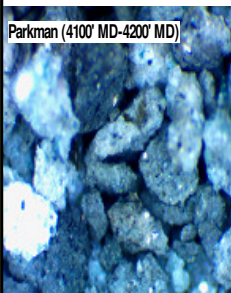
4150

4200

4250

4000'- 4100': SS: 60% LTGY
-MEDLTGY, FRI, FN TO MED GRN,
WSRTD, CALC CMT, IMBD PYR,
IMBD GLAUC, SILTY, INTGR POR,
NO STN, NO MIN FLOR, NO O
FLOR, NO CUT, NO RNG

Parkman (4100' MD-4200' MD)



4100'- 4200': SS: 50% LTGY
-MEDLTGY, FRI, FN TO MED GRN,
WSRTD, CALC CMT, IMBD PYR,
IMBD GLAUC, SILTY, INTGR POR,
NO STN, NO MIN FLOR, NO O
FLOR, NO CUT, NO RNG

CG 475u

CG 418u

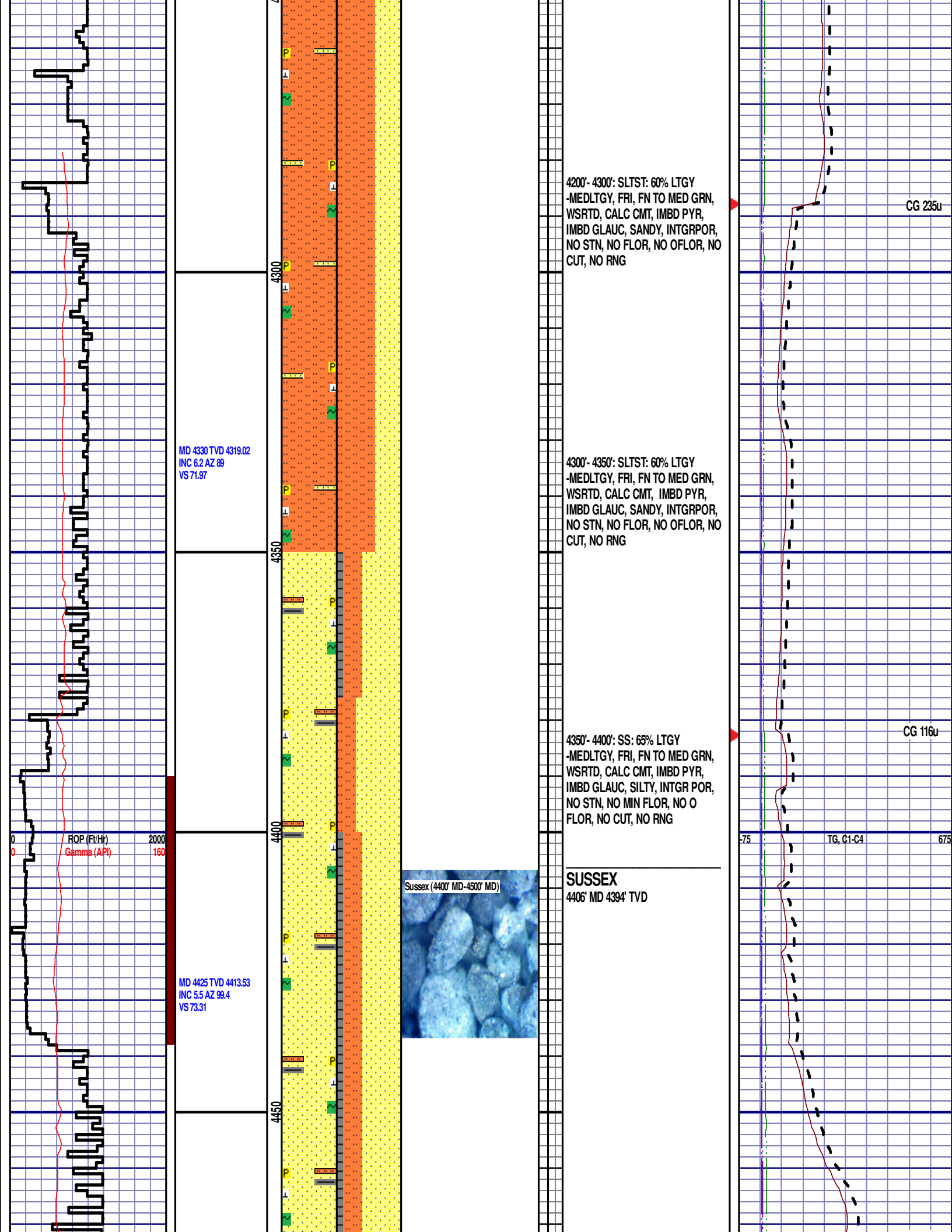
OP (Ft/Hr)
Gamma (API)

2000
160

75

TG, C1-C4

675



MD 4330 TVD 4319.02
INC 6.2 AZ 89
VS 71.97

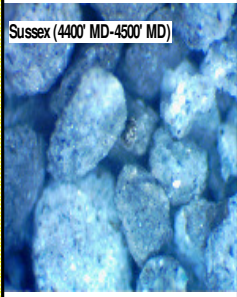
MD 4425 TVD 4413.53
INC 5.5 AZ 99.4
VS 73.31

4200'- 4300': SLTST: 60% LTGY
-MEDLTGY, FRI, FN TO MED GRN,
WSRTD, CALC CMT, IMBD PYR,
IMBD GLAUC, SANDY, INTGRPOR,
NO STN, NO FLOR, NO OFLOR, NO
CUT, NO RNG

4300'- 4350': SLTST: 60% LTGY
-MEDLTGY, FRI, FN TO MED GRN,
WSRTD, CALC CMT, IMBD PYR,
IMBD GLAUC, SANDY, INTGRPOR,
NO STN, NO FLOR, NO OFLOR, NO
CUT, NO RNG

4350'- 4400': SS: 65% LTGY
-MEDLTGY, FRI, FN TO MED GRN,
WSRTD, CALC CMT, IMBD PYR,
IMBD GLAUC, SILTY, INTGR POR,
NO STN, NO MIN FLOR, NO O
FLOR, NO CUT, NO RNG

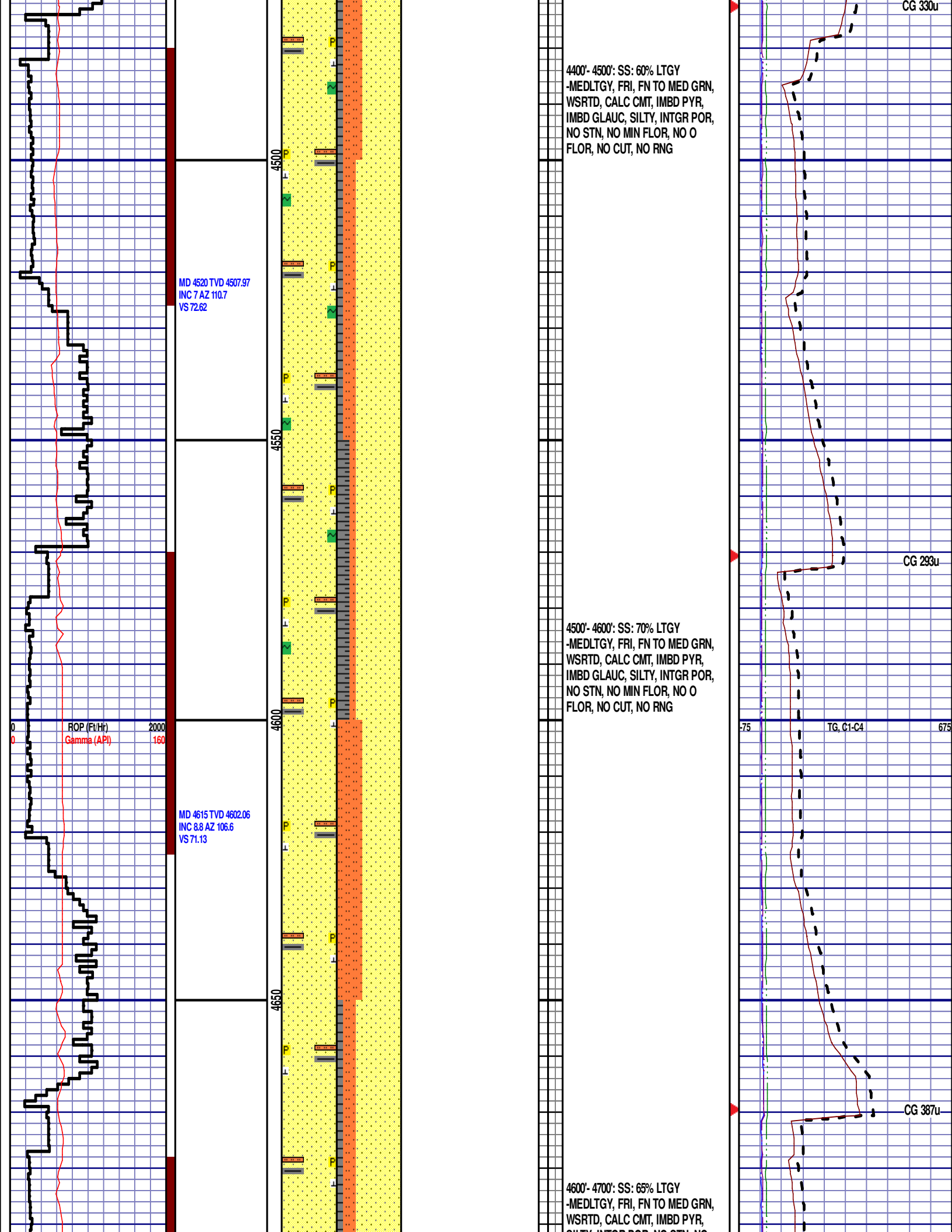
SUSSEX
4406' MD 4394' TVD

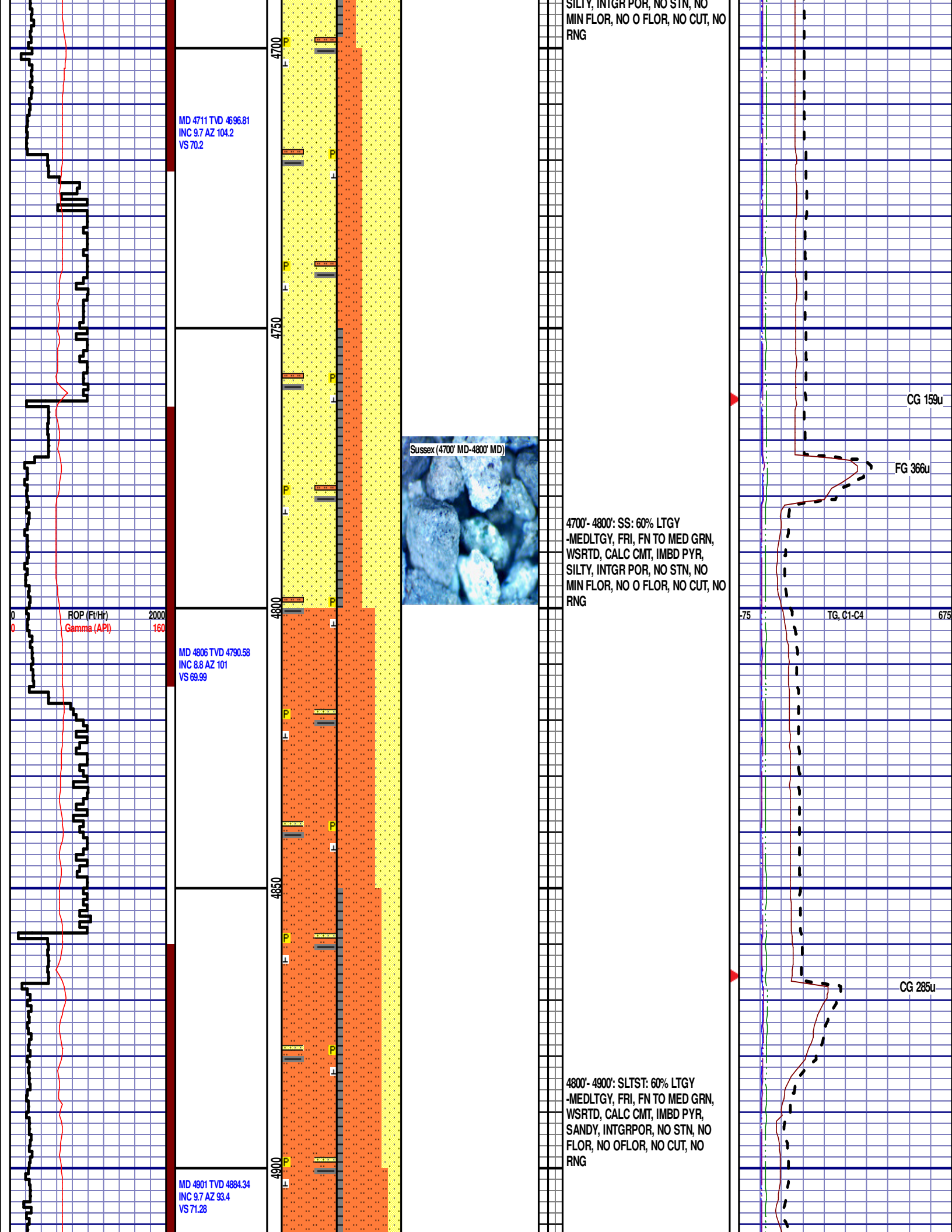


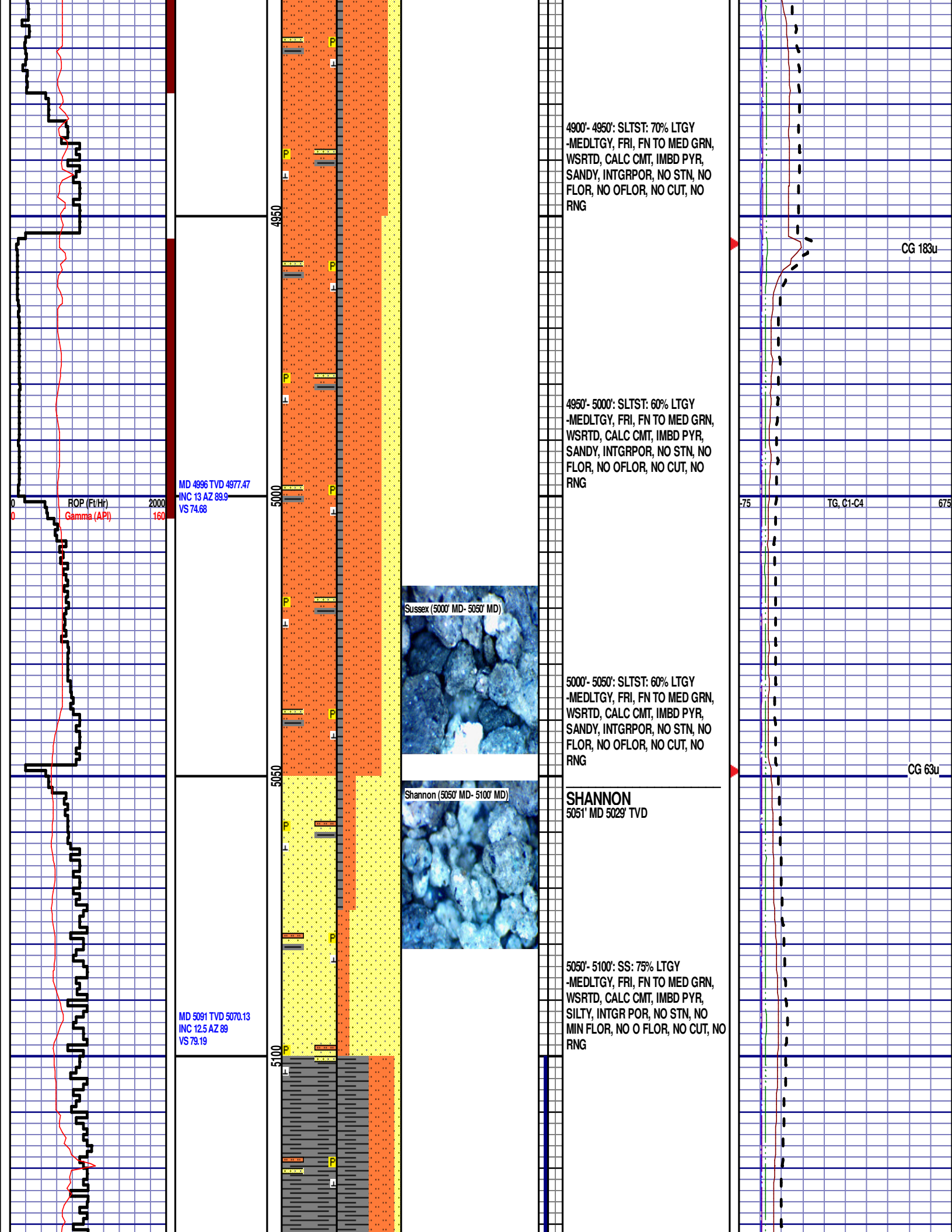
CG 235u

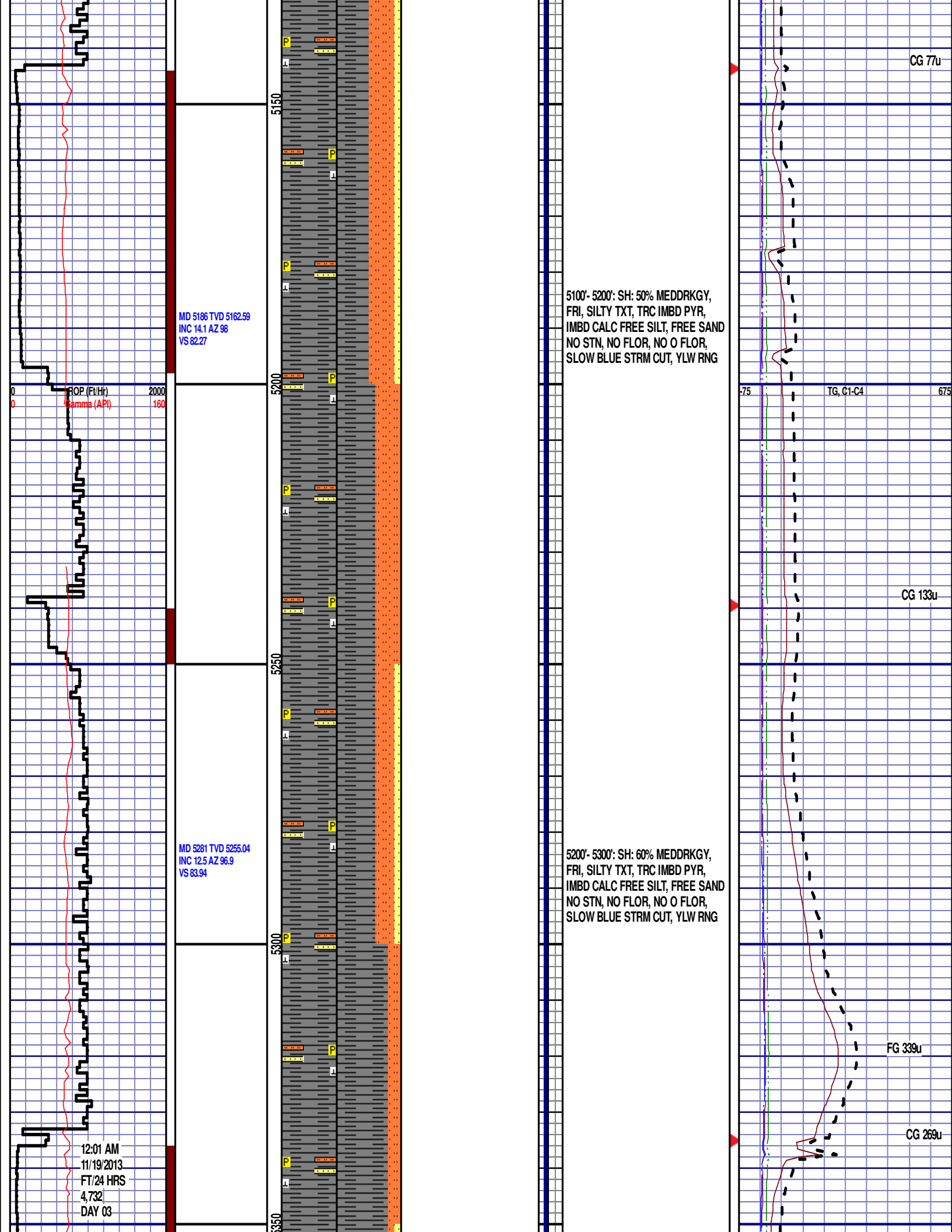
CG 116u

75 TG, C1-C4 675









WOB 12.4K
PP 2082
RPM 0
SPM 65/65

MD 5377 TVD 5348.58
INC 13.5 AZ 102.2
VS 84.78

ROP (Ft/Hr) 2000
Gamma (API) 160

Shannon (5300' MD-5400' MD)



5300'- 5400': SH: 80% MEDDRKGY,
FRI, SILTY TXT, TRC IMBD PYR,
IMBD CALC FREE SILT, FREE SAND
NO STN, NO FLOR, NO O FLOR,
SLOW BLUE STRM CUT, YLW RNG

(BLOCKAGE IN PASON)

TG, C1-C4

CG 55u

(BLOCKAGE IN PASON)

5400'- 5500': SH: 80% MEDDRKGY,
FRI, SILTY TXT, TRC IMBD PYR,
IMBD CALC FREE SILT, FREE SAND
NO STN, NO FLOR, NO O FLOR,
SLOW BLUE STRM CUT, YLW RNG

CG 54u

(BLOCKAGE IN PASON)

MD 5472 TVD 5441.22
INC 12.1 AZ 104.3
VS 84.3

MD 5567 TVD 5533.86
INC 13.5 AZ 101.3

VS 83.99

ROP (Ft/Hr) 2000
Gamma (API) 160

MD 5662 TVD 5626.42
INC 12.5 AZ 102
VS 84.08

MD 5757 TVD 5718.95
INC 13.7 AZ 98.9
VS 84.65

5600

5650

5700

5750

Shannon (5600' MD - 5700' MD)



5500'- 5600': SH: 85% MEDDRKGY,
FRI, SILTY TXT, TRC IMBD PYR,
IMBD CALC FREE SILT, FREE SAND
NO STN, NO FLOR, NO O FLOR,
SLOW BLUE STRM CUT, YLW RNG

5600'- 5700': SH: 90% MEDDRKGY,
FRI, SILTY TXT, TRC IMBD PYR,
IMBD CALC FREE SILT, FREE SAND
NO STN, NO FLOR, NO O FLOR,
SLOW BLUE STRM CUT, YLW RNG

5700'- 5800': SH: 70% MEDDRKGY,
FRI, SILTY TXT, TRC IMBD PYR,
IMBD CALC FREE SILT, FREE SAND

75 TG, C1-C4 675

CG 53u

(BLOCKAGE IN PASON)

CG 50u

(BLOCKAGE IN PASON)

DEPTH 5756'
WT 9.85
VIS 45
PH 8.5
FIL 6.2
CL 2400
CAL 80
H2O 92.4
OIL 0.0
LGS 30.33
GELS 6/11/16
PV 17
YP 19
CK 210

