

**BAKER  
HUGHES**

**RESERVOIR  
PERFORMANCE  
MONITOR**

**Baker Atlas**

|                                  |  |   |                                   |
|----------------------------------|--|---|-----------------------------------|
| <b>File No:</b><br>CH081546      | <b>Company</b><br>Well<br>Field<br>County                  | <b>WPX ENERGY</b><br>WPX ENERGY RWF 523-4<br>RULISON<br>GARFIELD                        | <b>State</b><br>COLORADO          |
| <b>API No:</b><br>05045220910000 | <b>Location</b><br>4 7S 94W<br>RMV 108-4 PAD<br>NABORS 574 | SHL: 454' FNL X 1717' FEL<br>BHL: 2568' FSL X 2017' FWL (NIESW)<br>SEC 4 TWP 7S RGE 94W | <b>Other Services</b><br>BOND LOG |
| Permanent Datum                  | GL   | Elevation   | 5794 ft                           |
| Log Measured From                | KB   | 26 ft   | Above P. D.                       |
| Drill Measured From              | KELLY BUSHING  |   | KB 5820 ft<br>DF<br>GL 5794 ft    |

|                              |                       |           |
|------------------------------|-----------------------|-----------|
| Date                         | 15/JAN/14             |           |
| Run                          | ONE                   |           |
| Service Order                | US625087              |           |
| Depth Driller                | 8867 ft               |           |
| Depth Logger                 | 8821 ft               |           |
| Bottom Logged Interval       | 8811 ft               |           |
| Top Logged Interval          | 4982 ft               |           |
| Time Started                 | 1100                  |           |
| Time Finished                | 1730                  |           |
| Operator Rig Time            | 6.5 HRS               |           |
| Type of Fluid in Hole        | WATER                 |           |
| Fluid Density                | NA                    |           |
| Salinity                     | NA                    |           |
| Fluid Level                  | 67 ft                 |           |
| Logged Cement Top            | NA                    |           |
| Wellhead Pressure            | 0 psi                 |           |
| Maximum Hole Deviation       | NA                    |           |
| Nominal Logging Speed        | 66 fpm                |           |
| Maximum Recorded Temperature | 247 degF              |           |
| Reference Log                | BAKER HUGHES BOND LOG |           |
| Reference Log Date           | 15/JAN/14             |           |
| Equipment No.                | 4271                  | GRAND JCT |
| Recorded By                  | FLOYD RENEAU          |           |
| Witnessed By                 | CHRIS TILLER          |           |

- FOLD HERE

In making interpretations of logs, our employees will give the customer the benefit of their best judgement. But since all interpretations are opinions based on inferences from electrical or other measurements, we cannot, and we do not guarantee the accuracy or correctness of any interpretation. We shall not be liable or responsible for any loss, cost, damages, or expenses whatsoever incurred or sustained by the customer resulting from any interpretation made by any of our employees.

| Borehole Record |         |         |
|-----------------|---------|---------|
| Bit Size        | From    | To      |
| 13.5 in         | 0 ft    | 2604 ft |
| 8.75 in         | 2604 ft | 8857 ft |

| Casing Record |             |       |      |         |
|---------------|-------------|-------|------|---------|
| Size          | Weight      | Grade | From | To      |
| 9.625 in      |             |       | 0 ft | 2604 ft |
| 4.5 in        | 11.6 lbm/ft | I-80  | 0 ft | 8857 ft |

|   |
|---|
| Remarks   |
| All data on this log is shifted and depth matched using the Gamma Ray curve to the Baker Hughes bond log dated 1/15/2014 at the client's request. |
| The amount of linear shift is -11.5 feet.   |
| Logged in PNC-3D mode.  |
| BHT = 247°F   |
| SJ = 5197'-5221'  |

| Equipment Data |      |         |               |               |          |
|----------------|------|---------|---------------|---------------|----------|
| Run            | Trip | Tool    | Series Number | Serial Number | Position |
| 1              | 1    | RPM     | 8281FA        | 10191667      | FREE     |
| 1              | 1    | RPM     | 8283PA        | 10169251      | FREE     |
| 1              | 1    | RPM     | 8281EA        | 10169250      | FREE     |
| 1              | 1    | GR      | 2812LA        | 10274385      | FREE     |
| 1              | 1    | TEL/CCL | 8248ED        | 10590814      | FREE     |
| 1              | 1    | PCM     | 8250EA        | 10408769      | FREE     |
| 1              | 2    | RPM     | 8281FA        | 10460082      | FREE     |
| 1              | 2    | RPM     | 8283PA        | 10466231      | FREE     |
| 1              | 2    | RPM     | 8281EA        | 10190984      | FREE     |
| 1              | 2    | GR      | 2812LA        | 10274385      | FREE     |
| 1              | 2    | TEL/CCL | 8248ED        | 10590814      | FREE     |
| 1              | 2    | PCM     | 8250EA        | 10408769      | FREE     |

MAIN SECTION  
PNC 3-D MODE

SPL PROCESSING

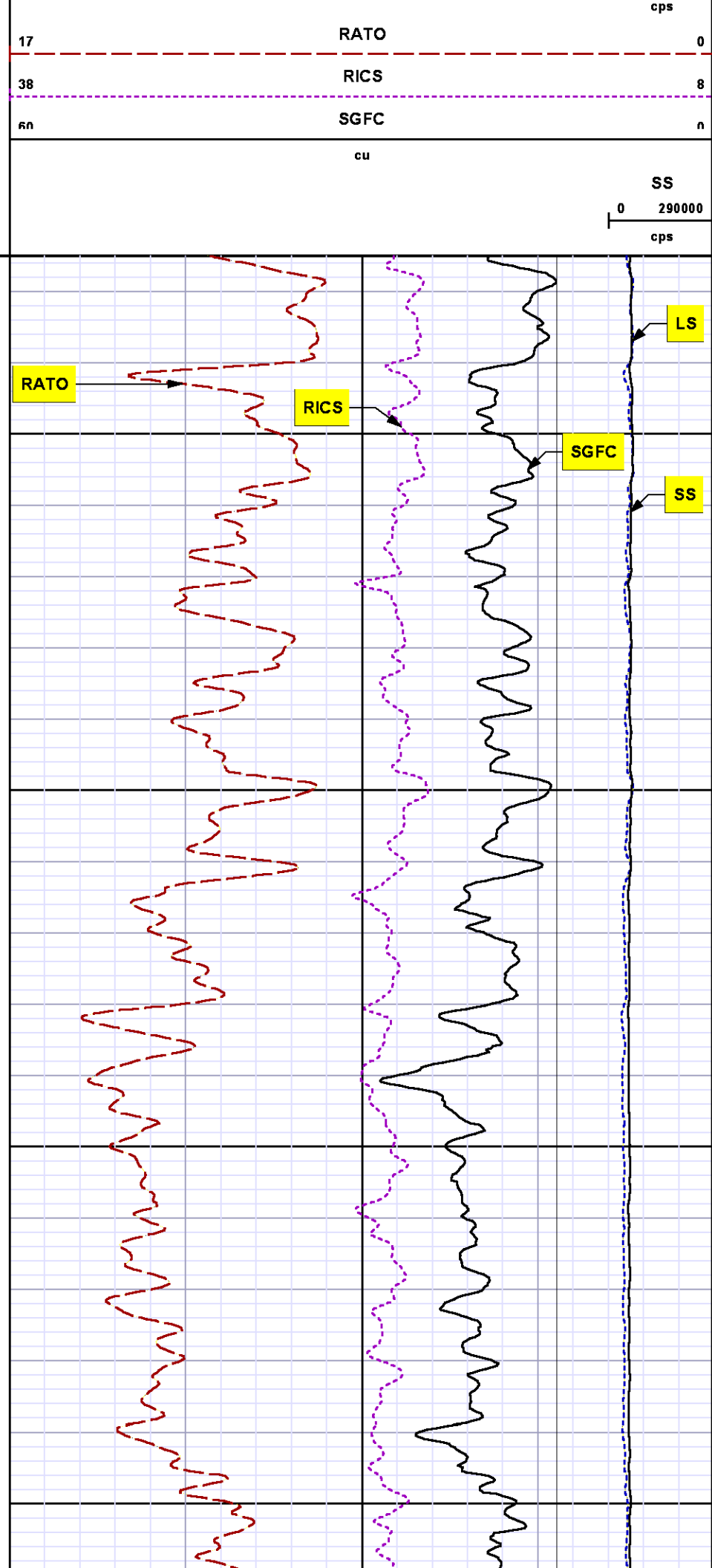
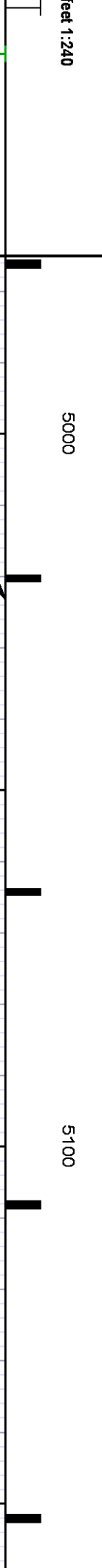
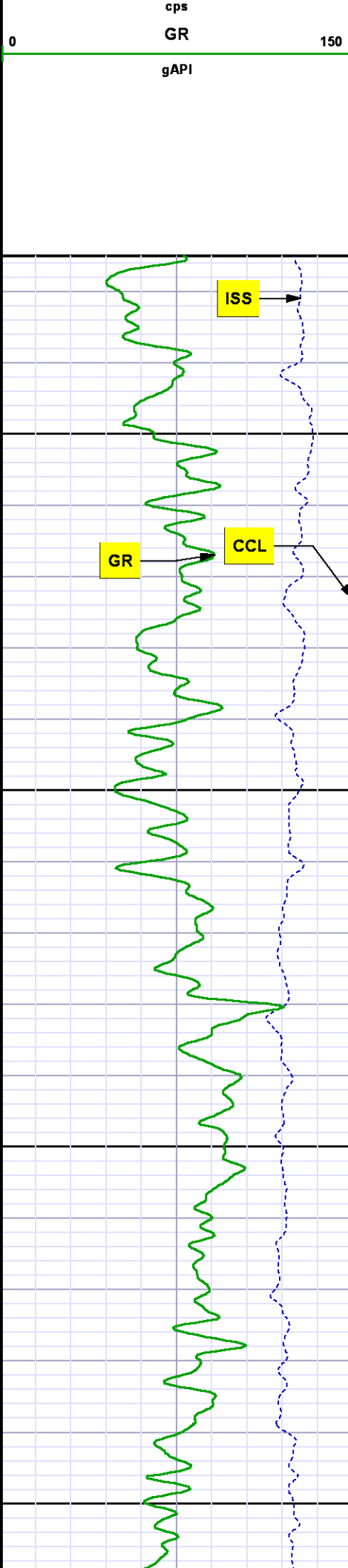
| MEASUREMENT TYPE | PARAMETER     | VALUE          | UNITS | TOP      | BOTTOM   |
|------------------|---------------|----------------|-------|----------|----------|
| PNC Porosity     | Borehole      | Cased          |       | 4959.750 | 5968.250 |
| PNC Porosity     | Borehole Size | 8.750          | inch  | 4959.750 | 5968.250 |
| PNC Porosity     | Casing Size   | 4.500          | inch  | 4959.750 | 5968.250 |
| PNC Porosity     | Gas Filled    | Non Gas Filled |       | 4959.750 | 5968.250 |
| PNC Porosity     | Matrix        | Sandstone      |       | 4959.750 | 5968.250 |

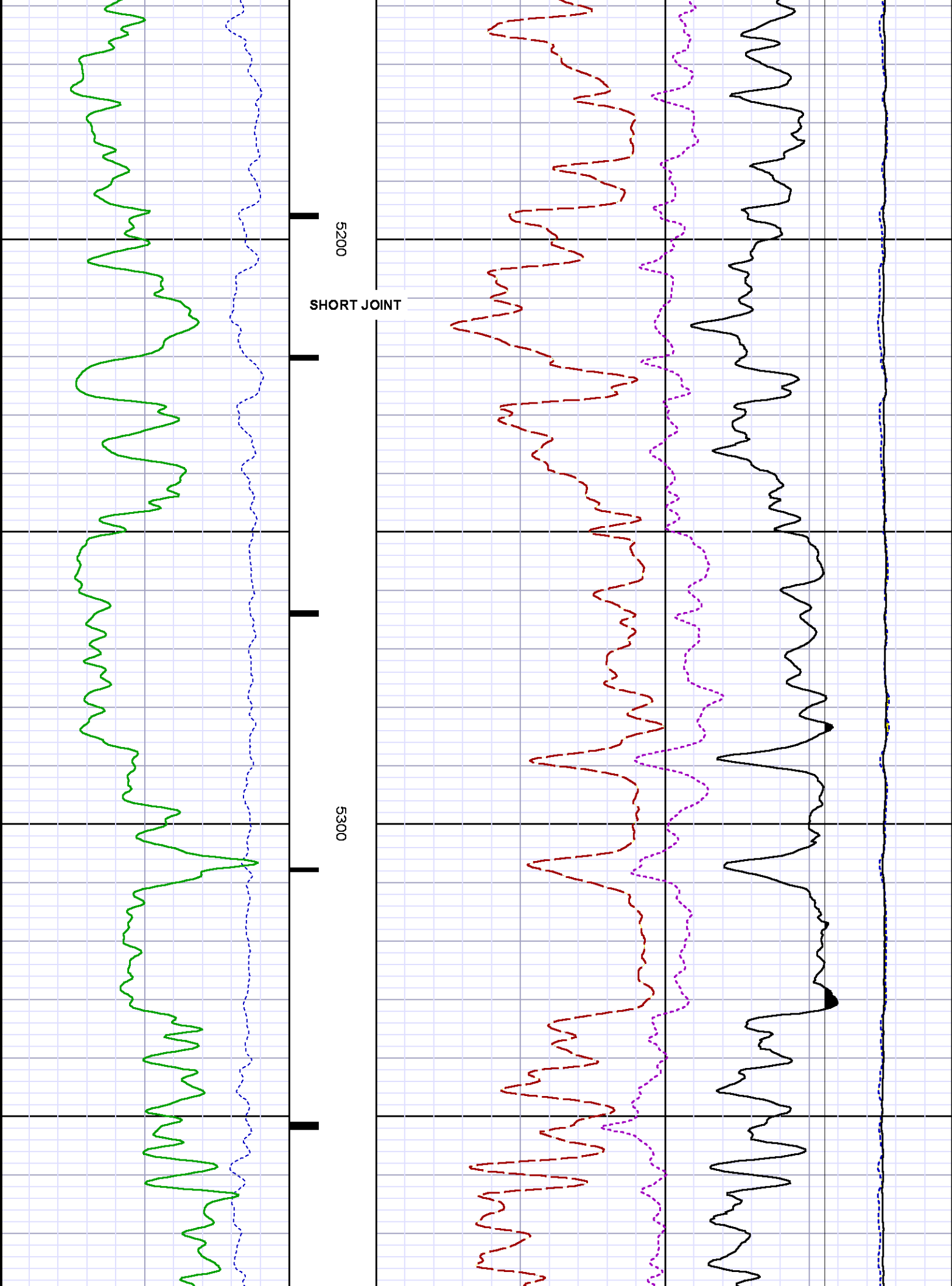
DEPTH OFFSETS  
(for Acquired Curves)

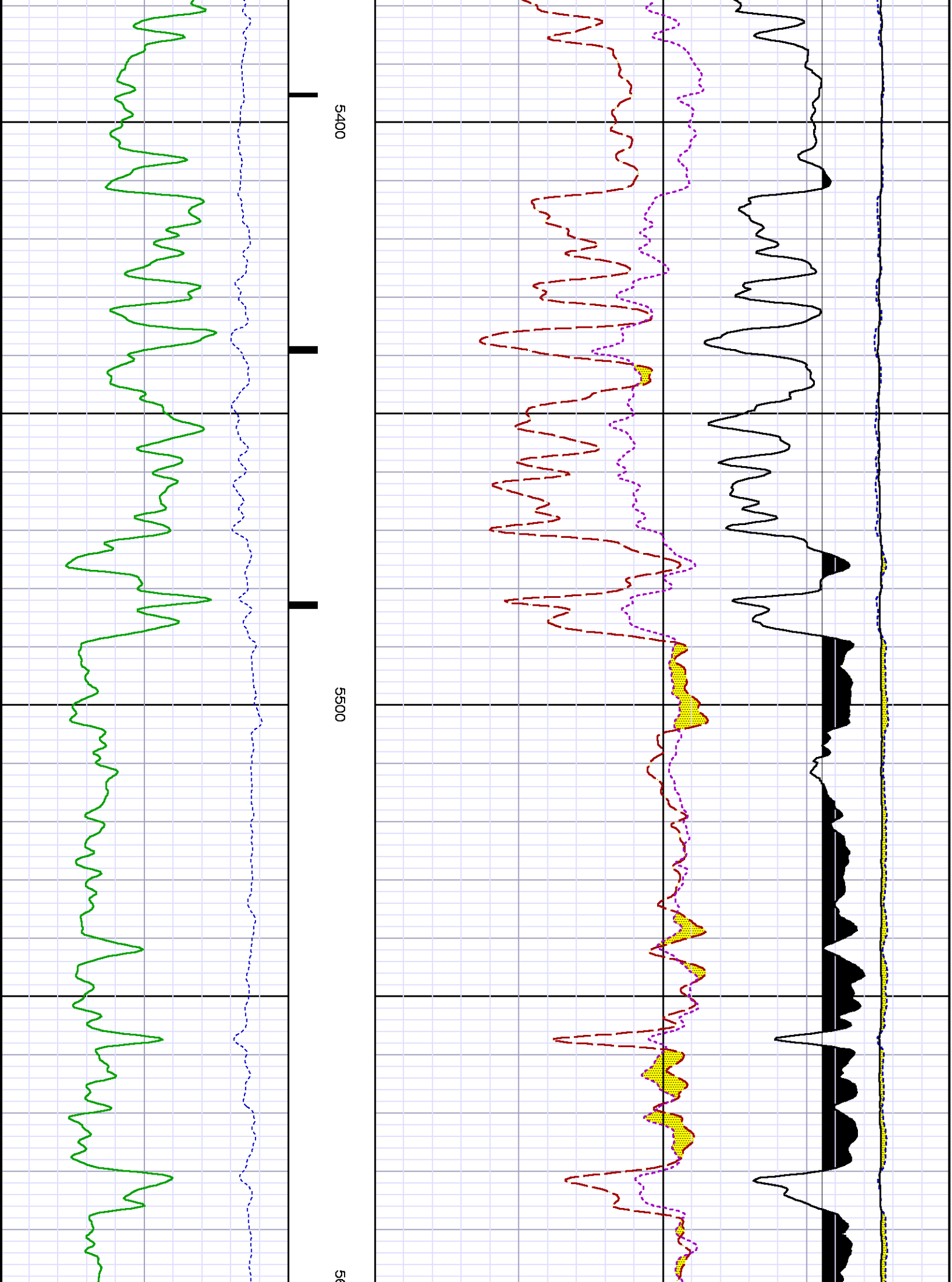
| SERIES | DEPTH OFFSET | ACQUIRED CURVES |
|--------|--------------|-----------------|
|        |              |                 |

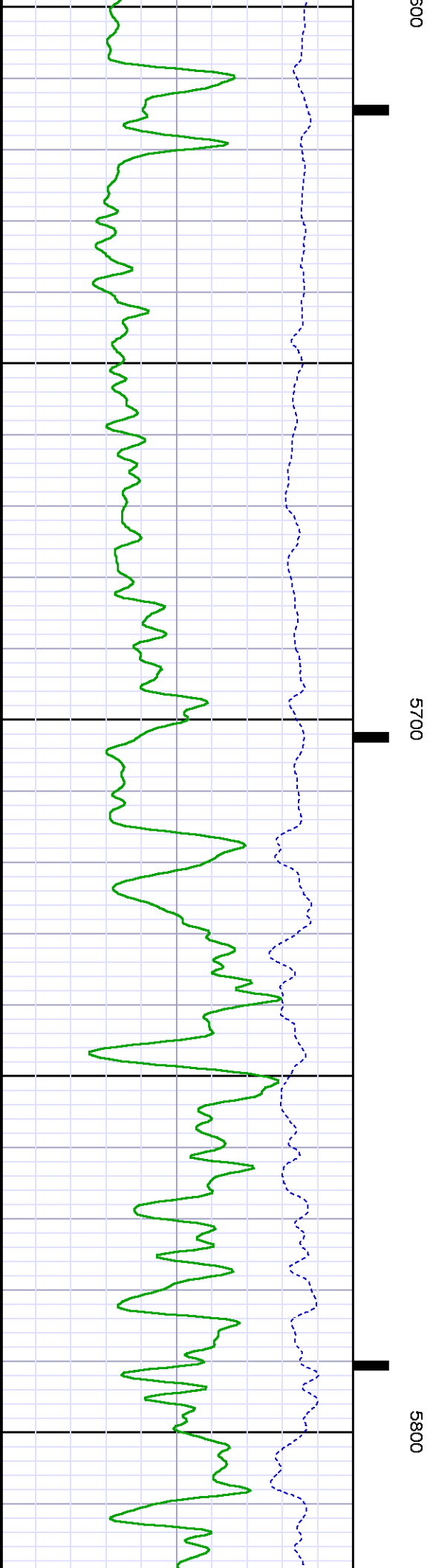
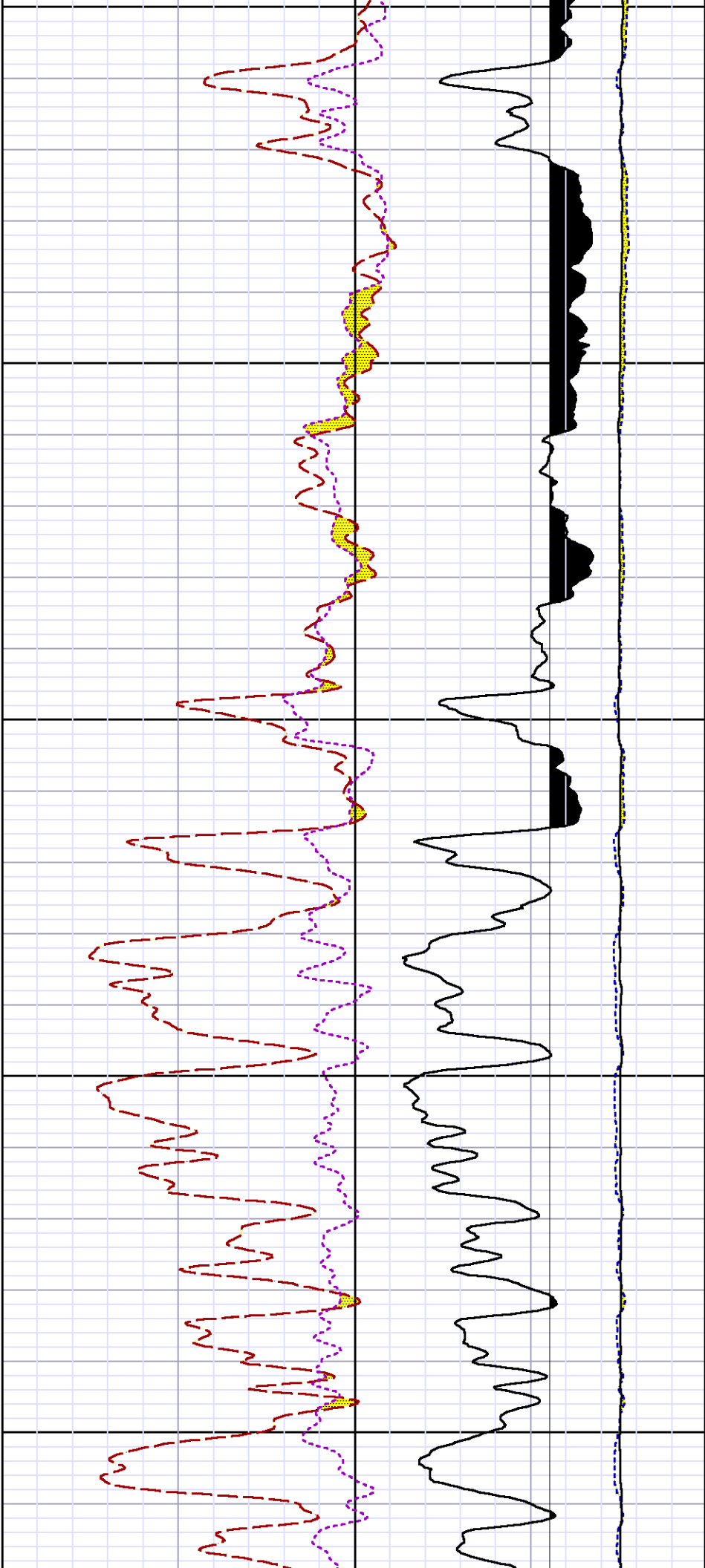
|        |         |  |
|--------|---------|--|
| 8248ED | -14.478 | FLTM                                     |
| 8248ED | -12.478 | CCL CHV                                  |
| 2812LA | -9.928  | GR                                       |
| 8281XA | -0.662  | HVC3Q0 SEQ3 AMA3 AML3 BKX CXS            |
|        |         | CPT3Q0 CPT3Q2 CPT3Q3 CPT3Q4 ET3 IXS      |
|        |         | MCS3 MCS3Q0 QCAL3 RGN3 RICX SDA3         |
|        |         | SDL3 SGA3 SGL3 STA3 XS ASPEC3            |
|        |         | AMB3 AMF3 CHF3 IXSC IXSN RATO23          |
|        |         | RICXC RIN13C RIN23 RIN23C SD3D SG3D      |
|        |         | SGB3 SGF3 WDT3 CXSR IXSR XSR             |
|        |         | RICXR                                    |
| 8281XA | -0.250  | HVC2Q0 SEQ2 AMA2 AMB2 AMF2 AML2          |
|        |         | BKL CHF2 CLS CPT2Q0 CPT2Q2 CPT2Q3        |
|        |         | CPT2Q4 ET2 ILS LS MCS2 MCS2Q0            |
|        |         | QCAL2 RGN2 RICL RONE23 RTWO23 SDA2       |
|        |         | SDL2 SGA2 SGB2 SGF2 SGK2 SGL2            |
|        |         | STA2 ASPEC2 ILSC ILSN WDT2 RICLC         |
|        |         | CLSR ILSR LSR RICLR                      |
| 8281XA | 0.000   | CPRS HVC1Q0 MV SEQ SEQ1 AMA1             |
|        |         | AMB1 AME1 AMF1 AML1 BKS CHF1             |
|        |         | CSS CORB CORF CPT1Q0 CPT1Q2 CPT1Q2A      |
|        |         | CPT1Q2B CPT1Q2C CPT1Q3 CPT1Q4 CPT1Q5 ET1 |
|        |         | G1 G2 GE1S GE2S ISS MCS1                 |
|        |         | MCS1Q0 QA1 QCAL1 QM1 RATO RATO13         |
|        |         | RBOR RGN1 RICS RIN RONE RPOR             |
|        |         | RTWO RIN13 RONE13 RTWO13 SALB SC1        |
|        |         | SDA1 SDL1 SGA1 SGB1 SGBC SGE1            |
|        |         | SGF1 SGFC SGK1 SGL1 SS SS2               |
|        |         | STA1 PD1S PD2S PD3S MD1S MD2S            |
|        |         | MD3S DG1S DG2S DG3S PD1M PD2M            |
|        |         | PD3M MD1M MD2M MD3M DG1M DG2M            |
|        |         | DG3M MVS MA MVM FILV IAM                 |
|        |         | TA PVM PVS IAS SSTAT QPD1                |
|        |         | QPD2 QPD3 QMD1 QMD2 QMD3 QDG1            |
|        |         | QDG2 QDG3 QMA QTA QFILV QMV              |
|        |         | QPV QIA DERR DCNT QPK1 QSA1              |
|        |         | PKS1 ASPEC1 H0C FE2XC ISSC RINC          |
|        |         | ISSN RDEN WDT1 RICSC CSSR G1R            |
|        |         | G2R ISSR SSR SS2R RATOR RATO13R          |
|        |         | RBORR RICSR RINR RIN13R RONER RPORR      |
|        |         | RTWOR                                    |
| SYSTEM | 0.000   | TEN TTEN                                 |

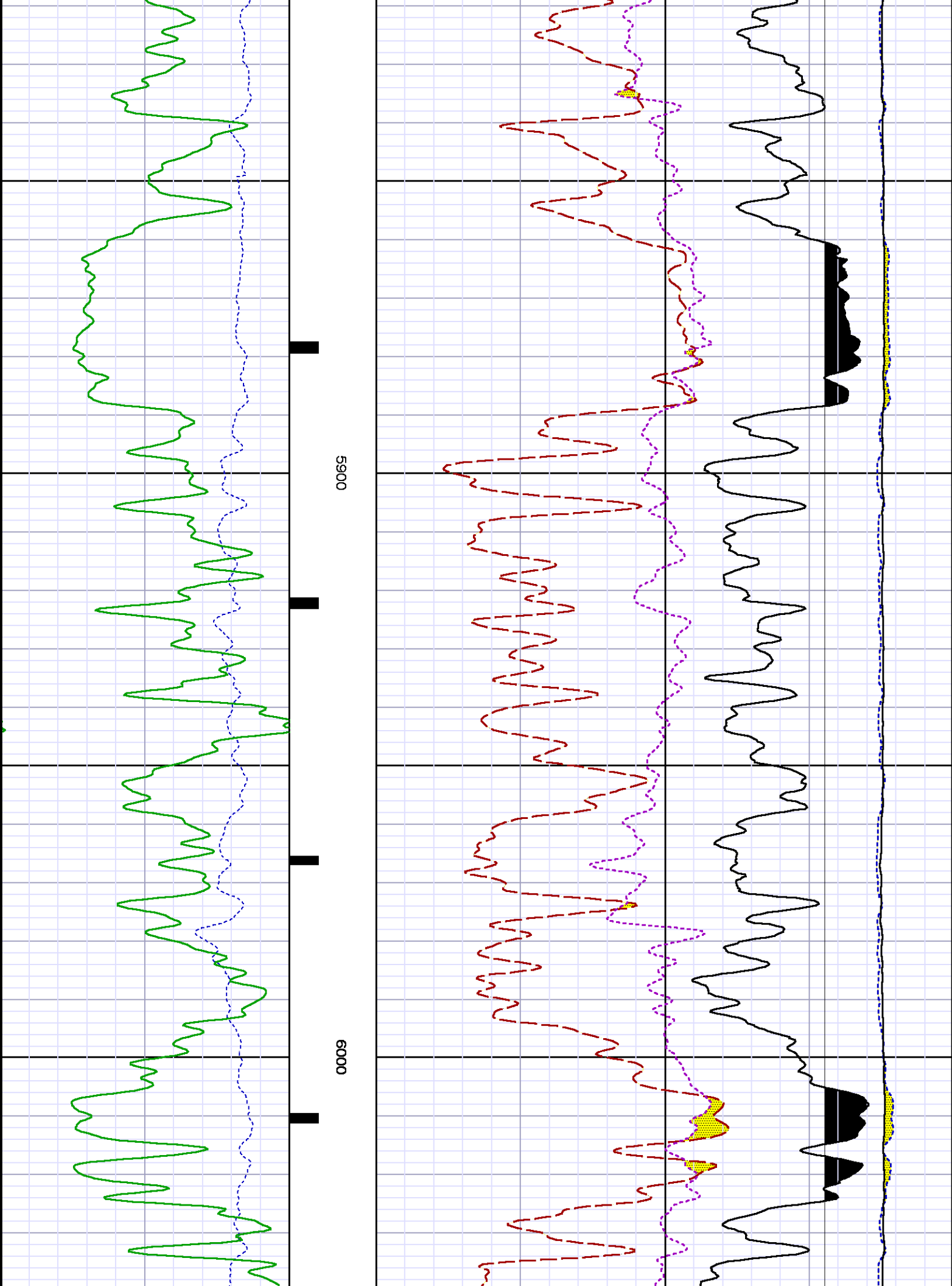
|   |     |        |          |
|---|-----|--------|----------|
| Created by : RPM9, v5.3.1.0                                       |     |        |          |
| Plotted by : PlotMgr, v5.4.504                                    |     |        |          |
| Company : WPX ENERGY  |     |        |          |
| Well : WPX ENERGY RWF 523-4                                       |     |        |          |
| File Name : d:\welldata\wpx energy\rwf 523-4\523rp\mainsplice.xtf |     |        |          |
| Mode : PlotMgr 5.4.504  |     |        |          |
| Interval : 4975.00 - 8827.00 feet UP                              |     |        |          |
| Created : 1/15/2014 4:09:27 PM                                    |     |        |          |
| 0   | ISS | 1e+006 | CCL MD   |
|   |     |        | 000      |
|   |     |        | LS 29000 |



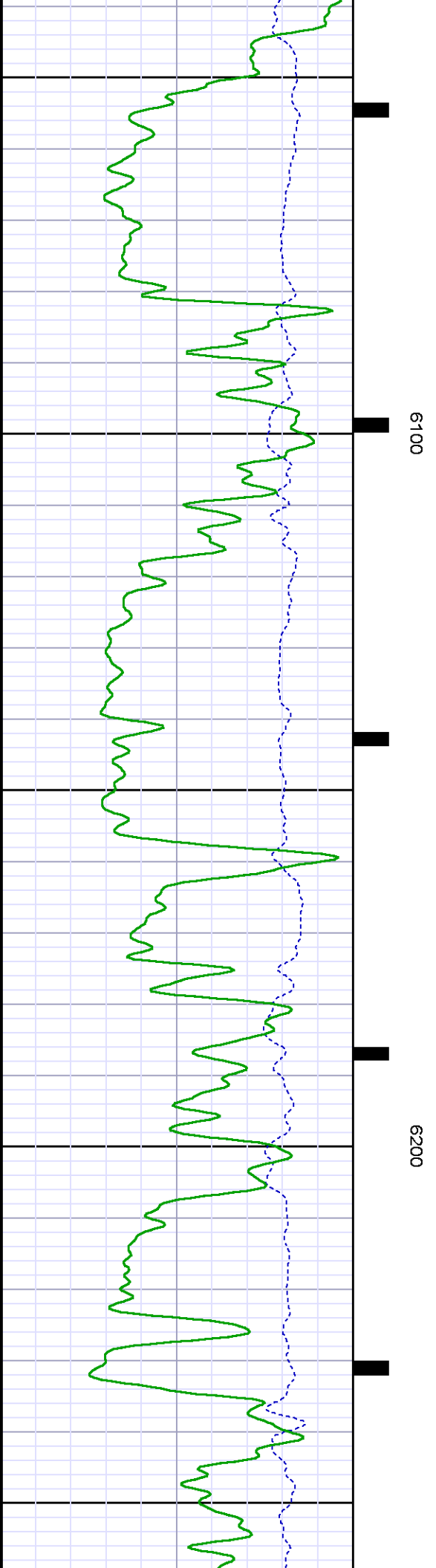
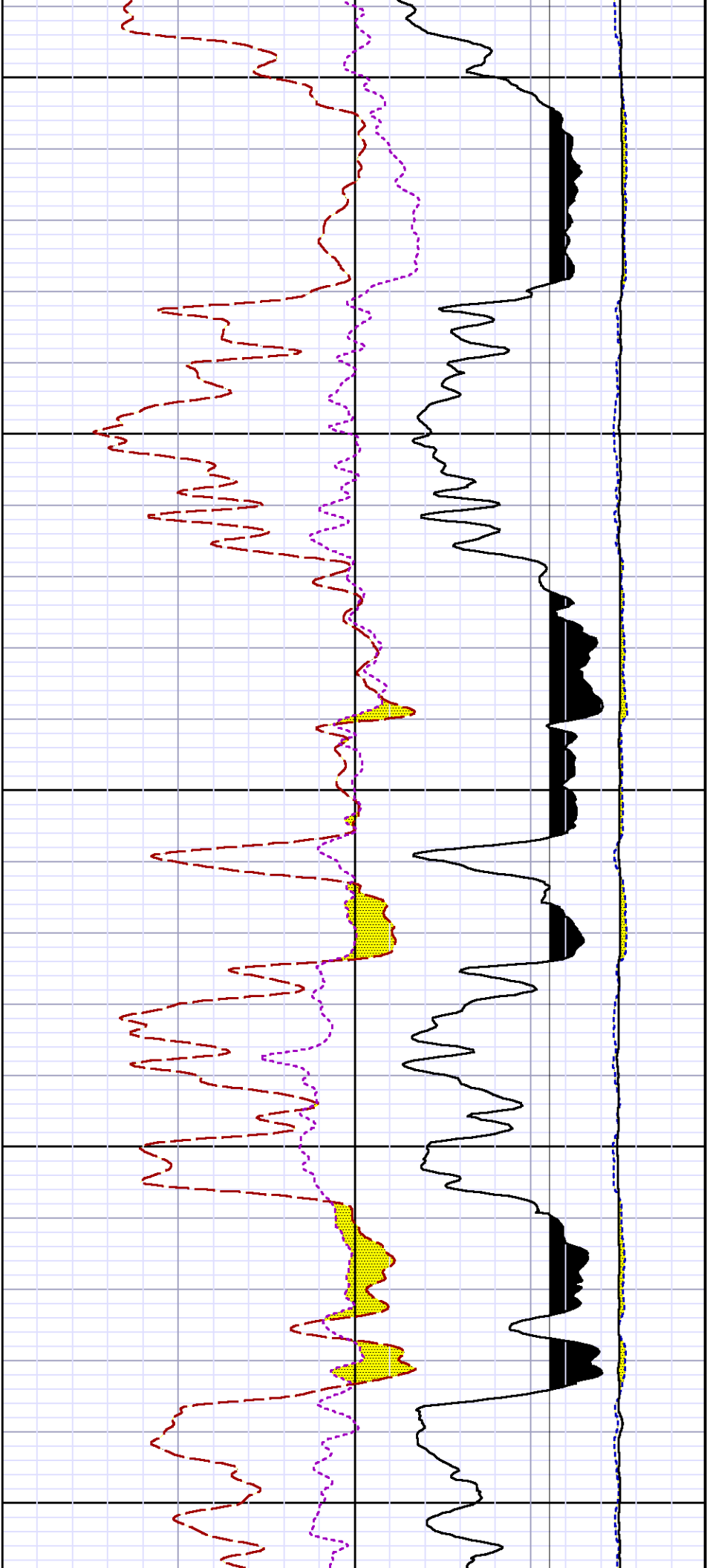


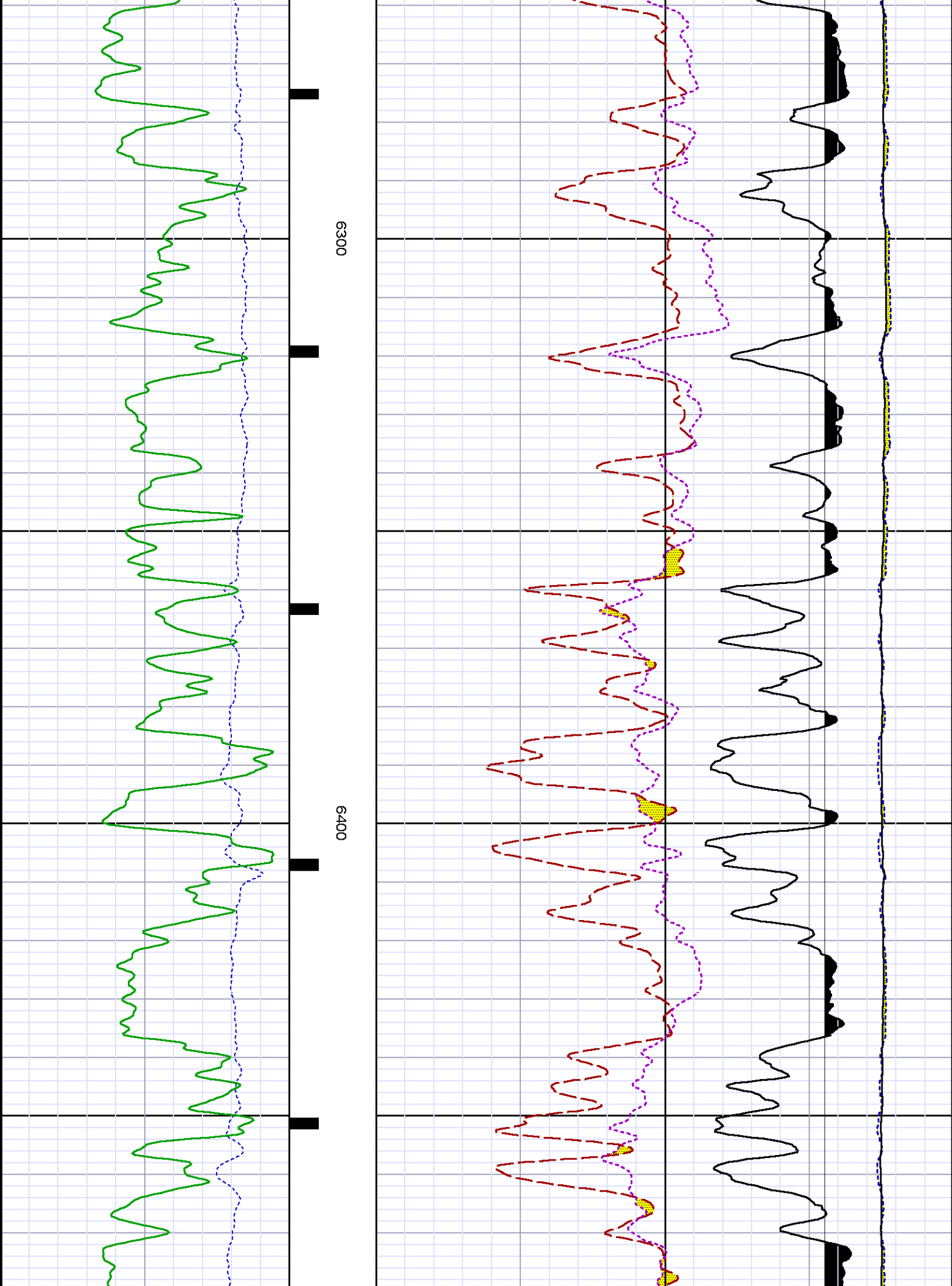


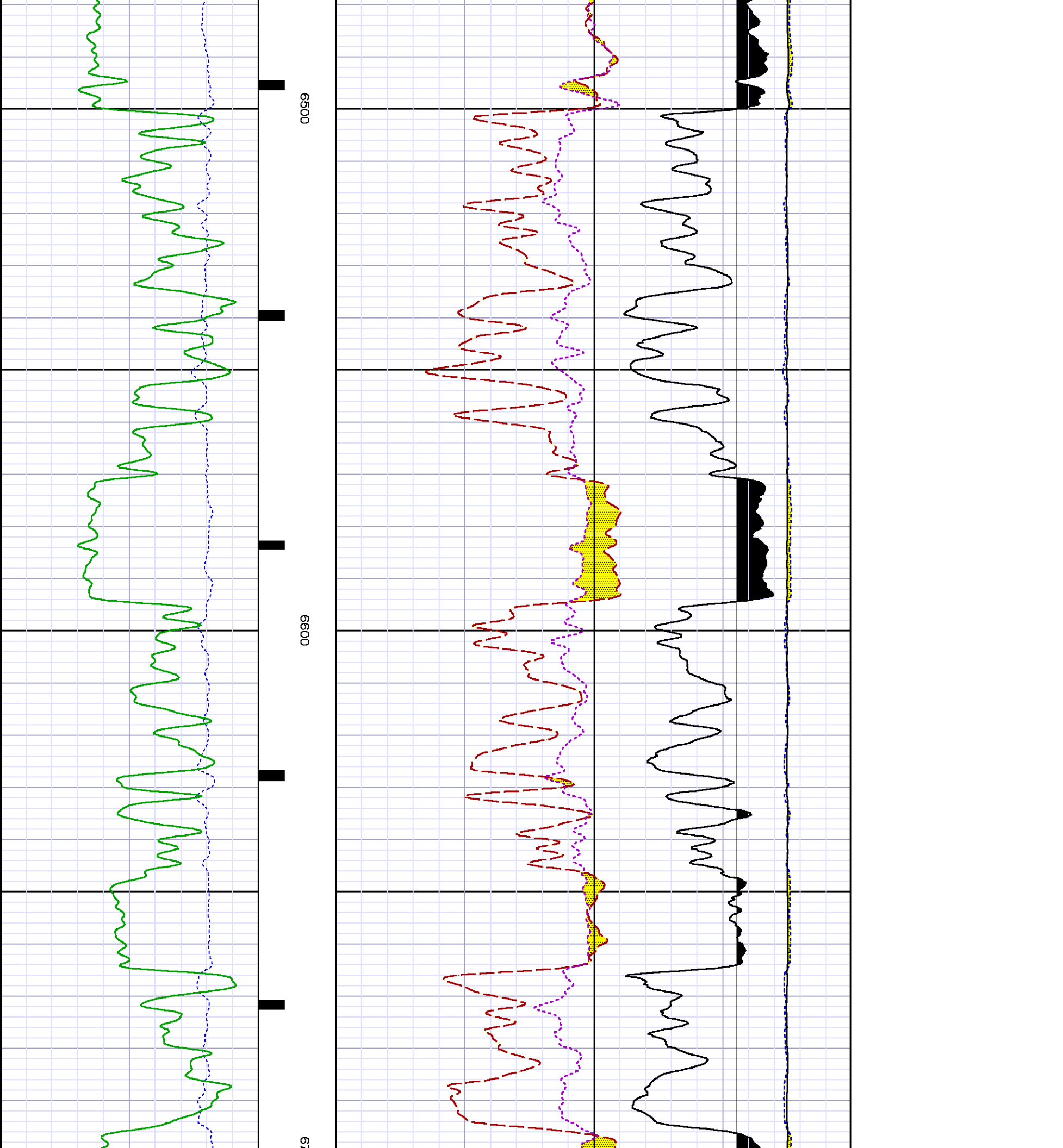


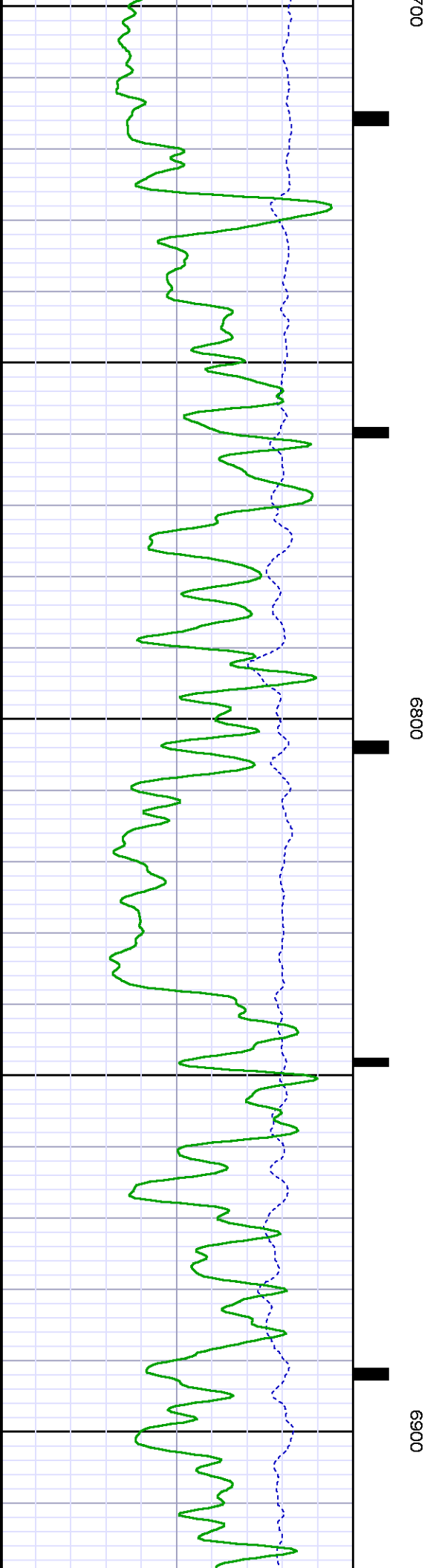
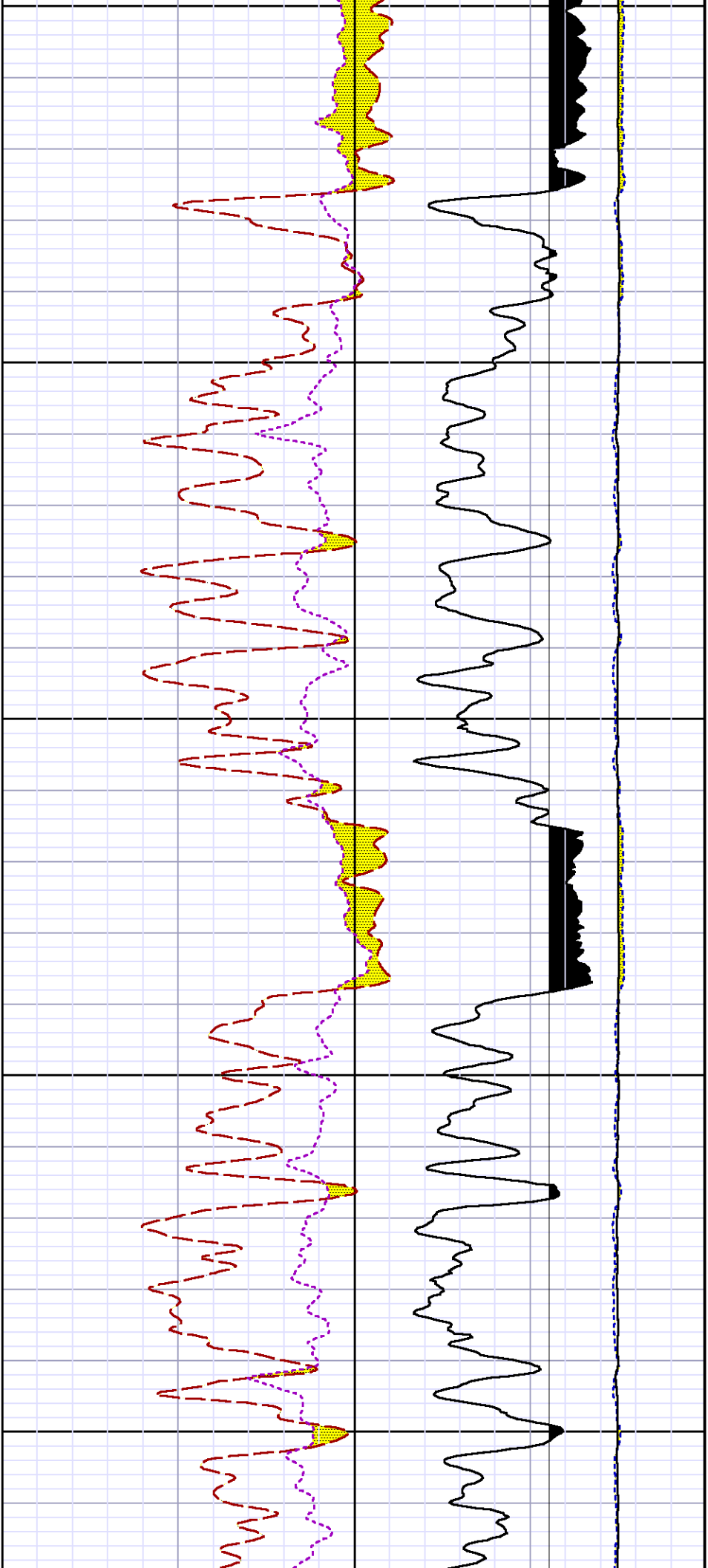


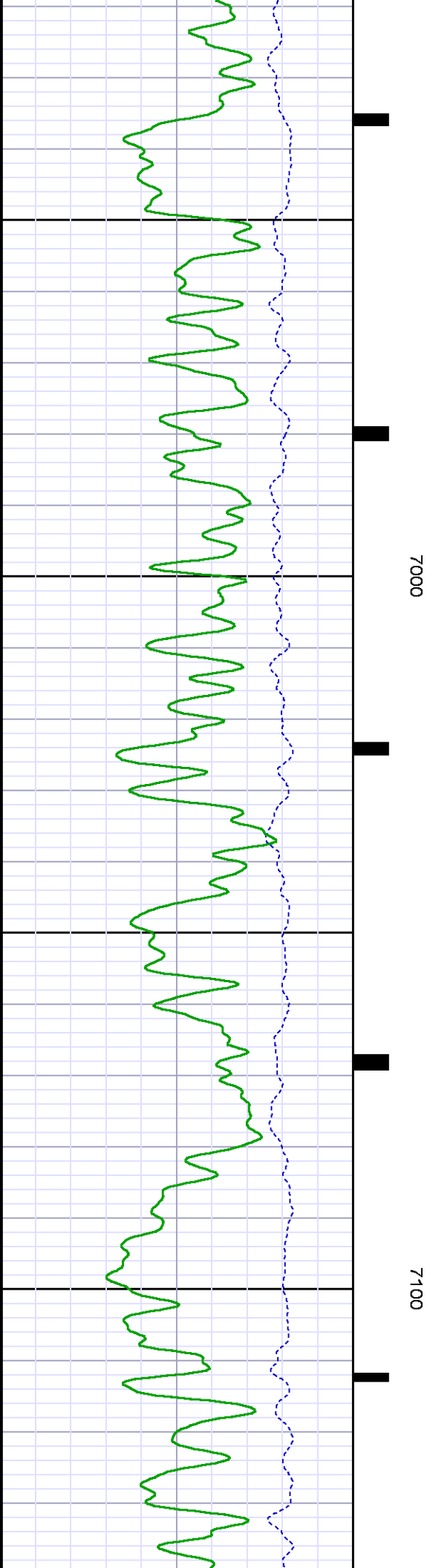
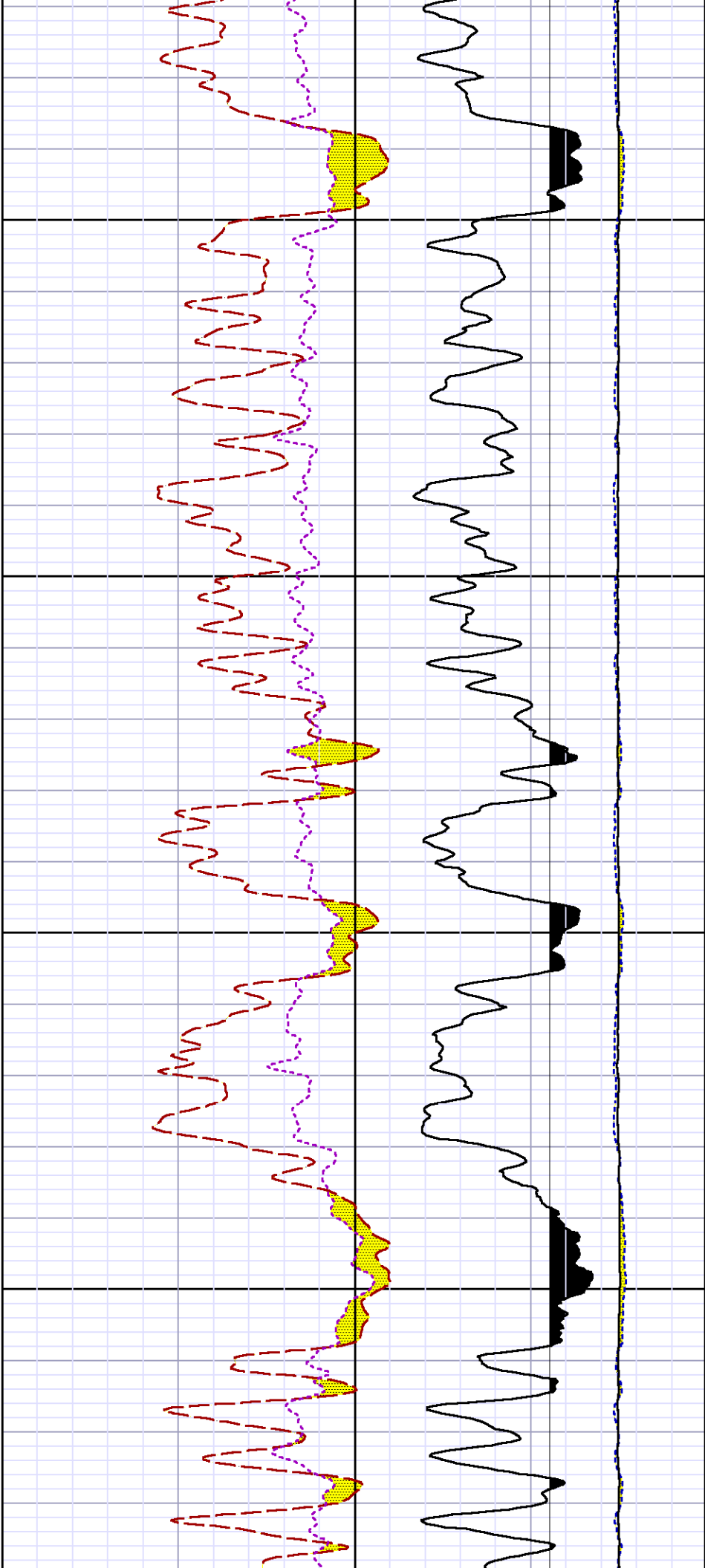


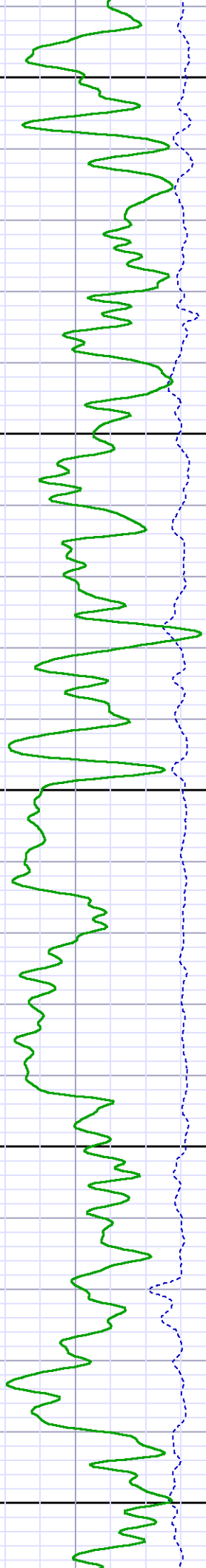
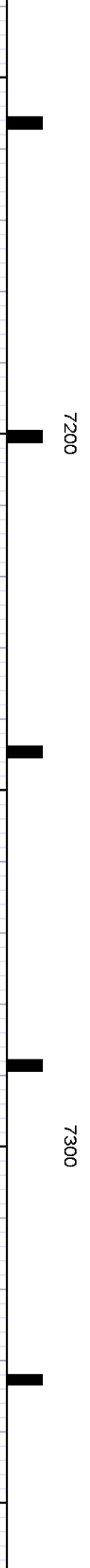
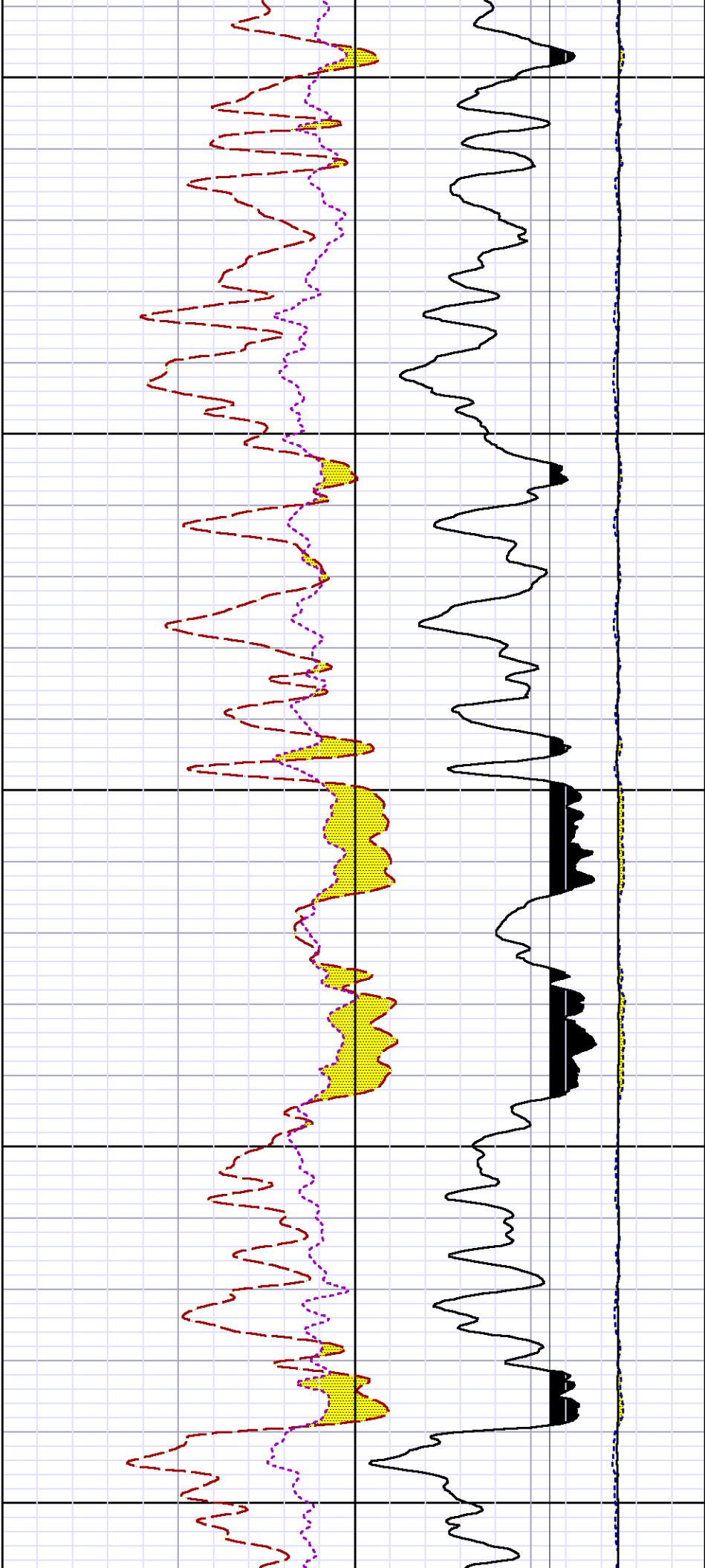


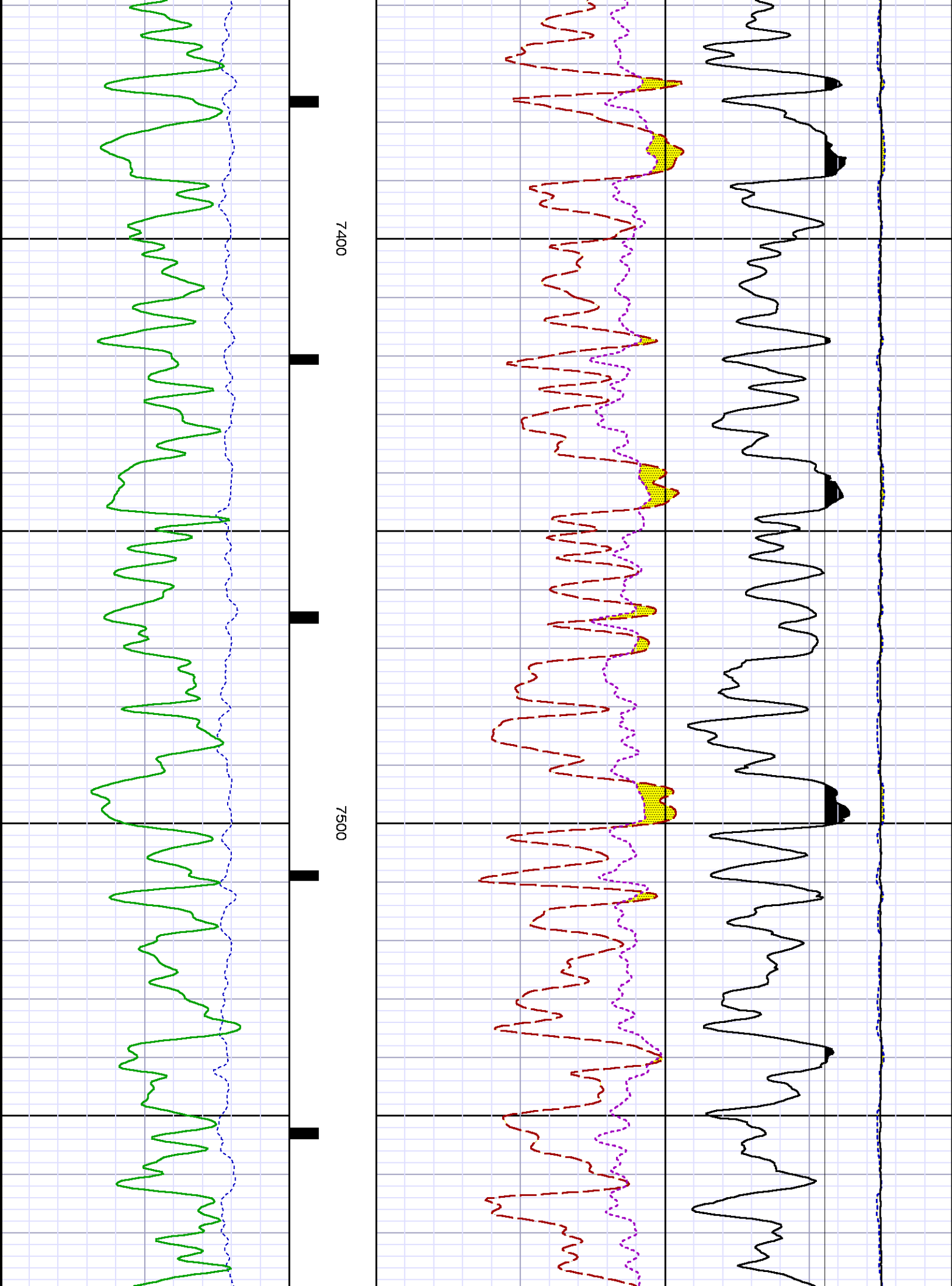


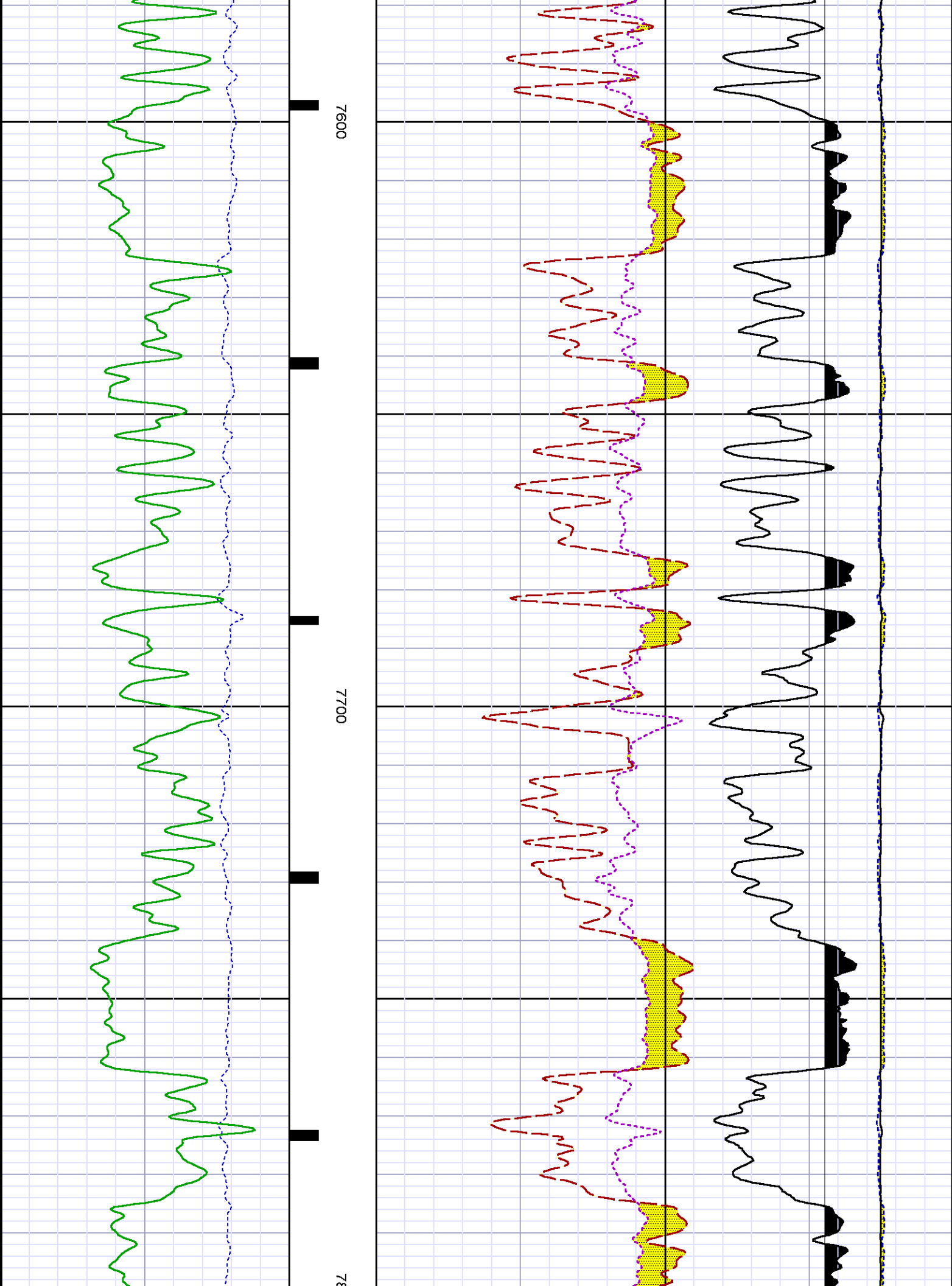




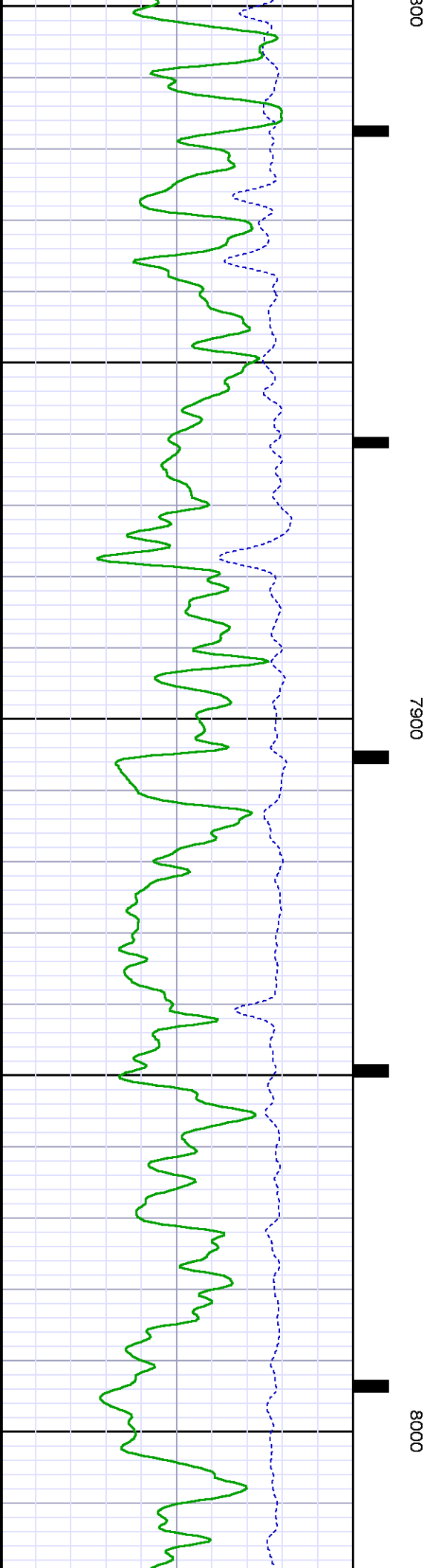
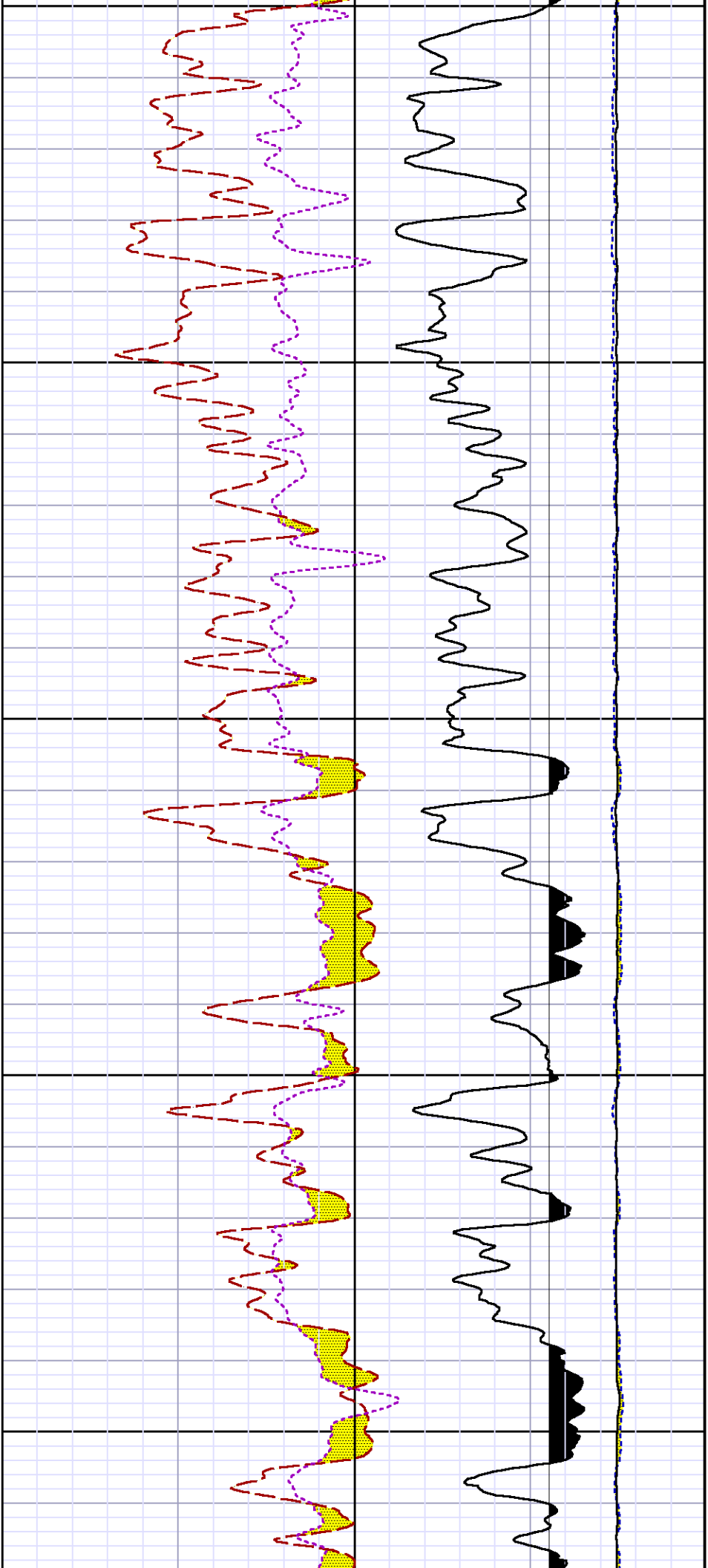


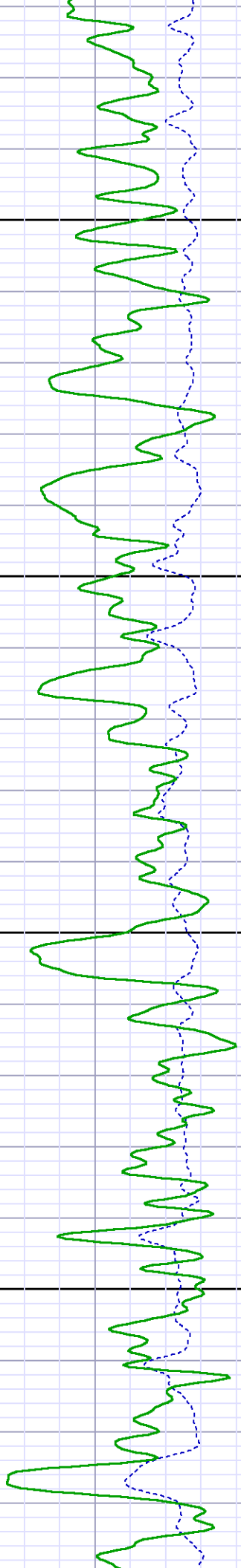
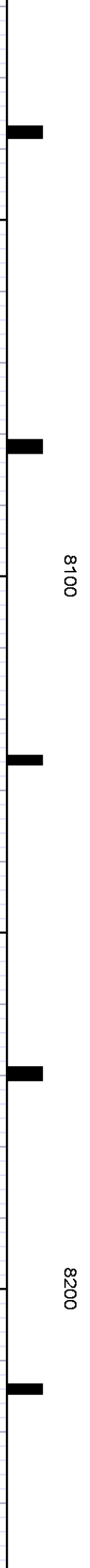
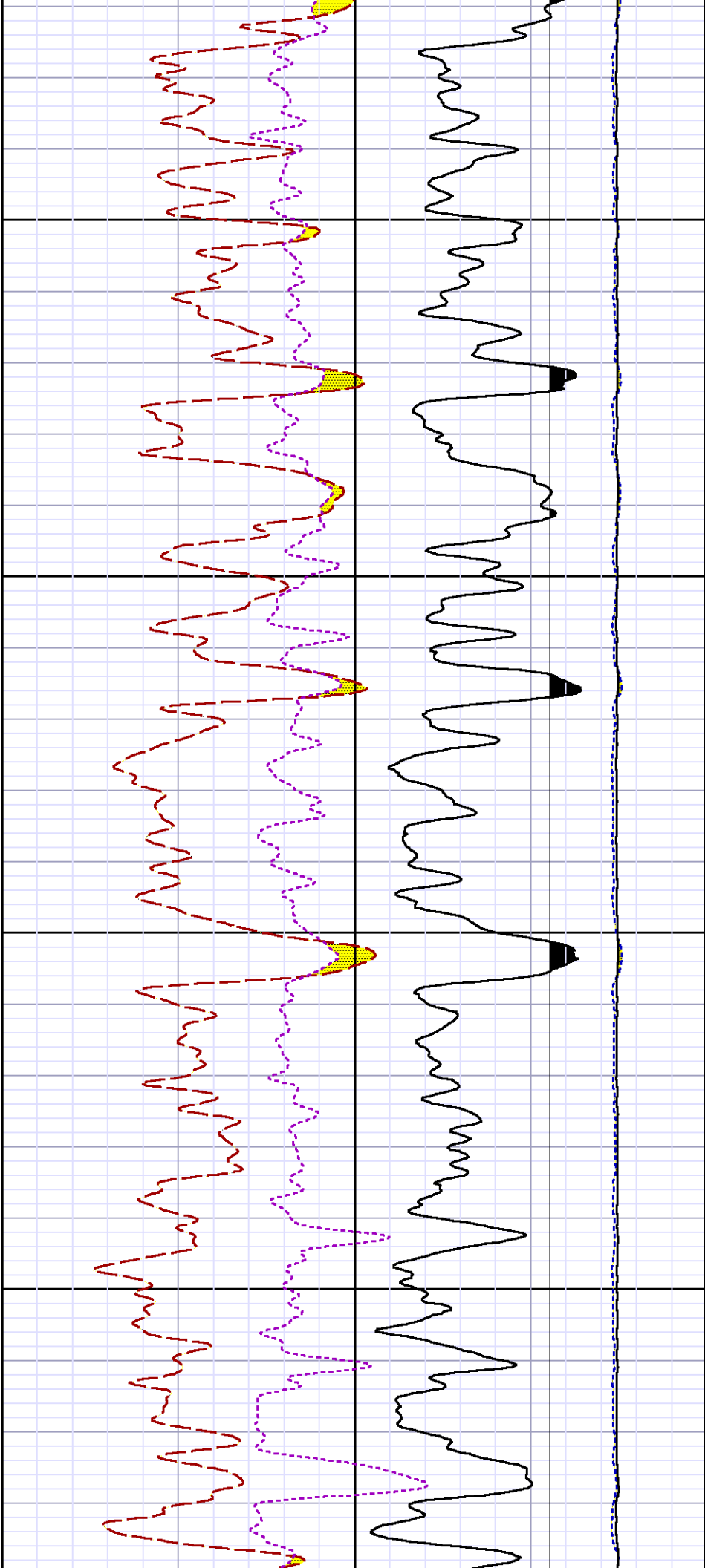


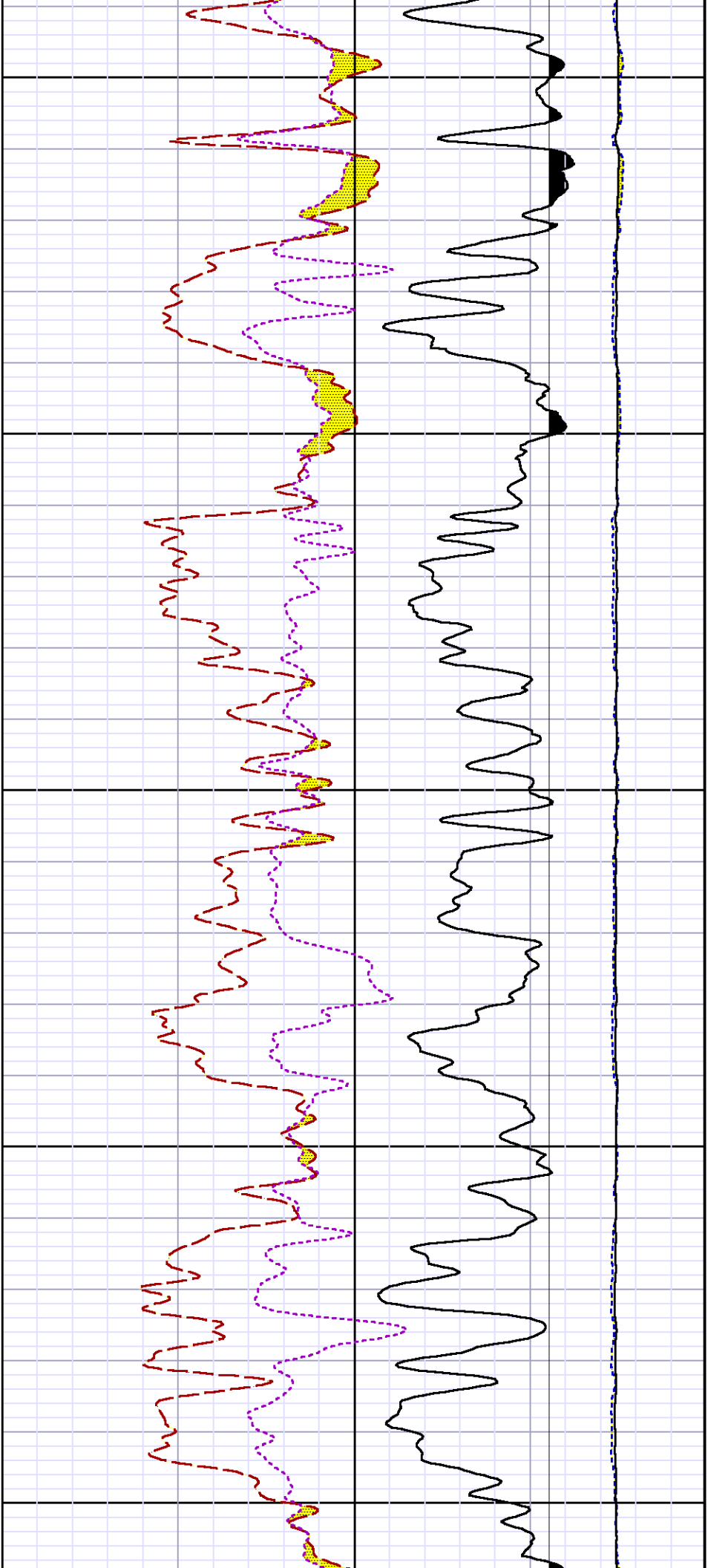






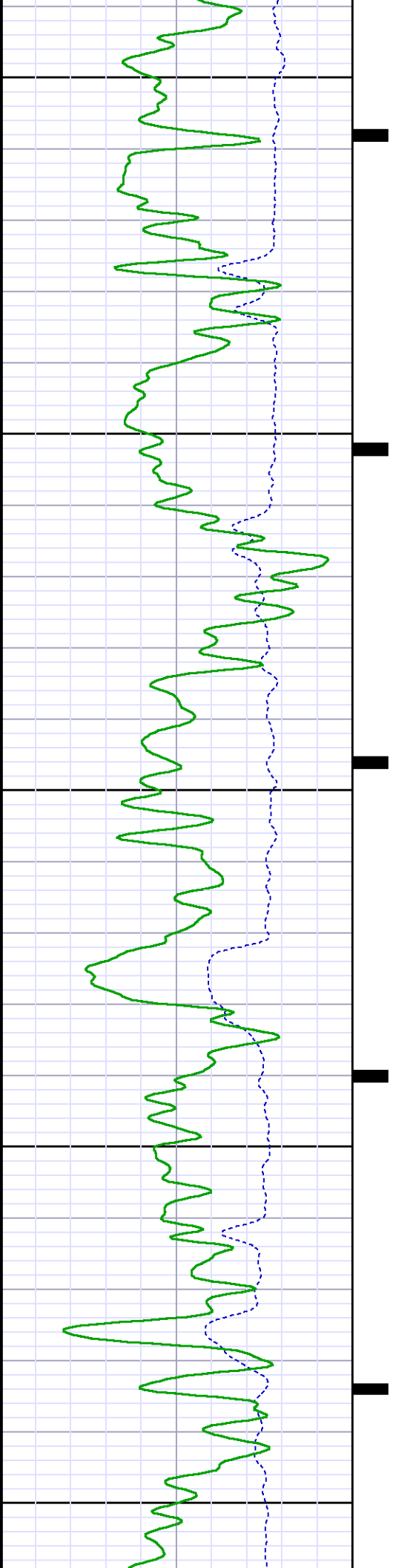


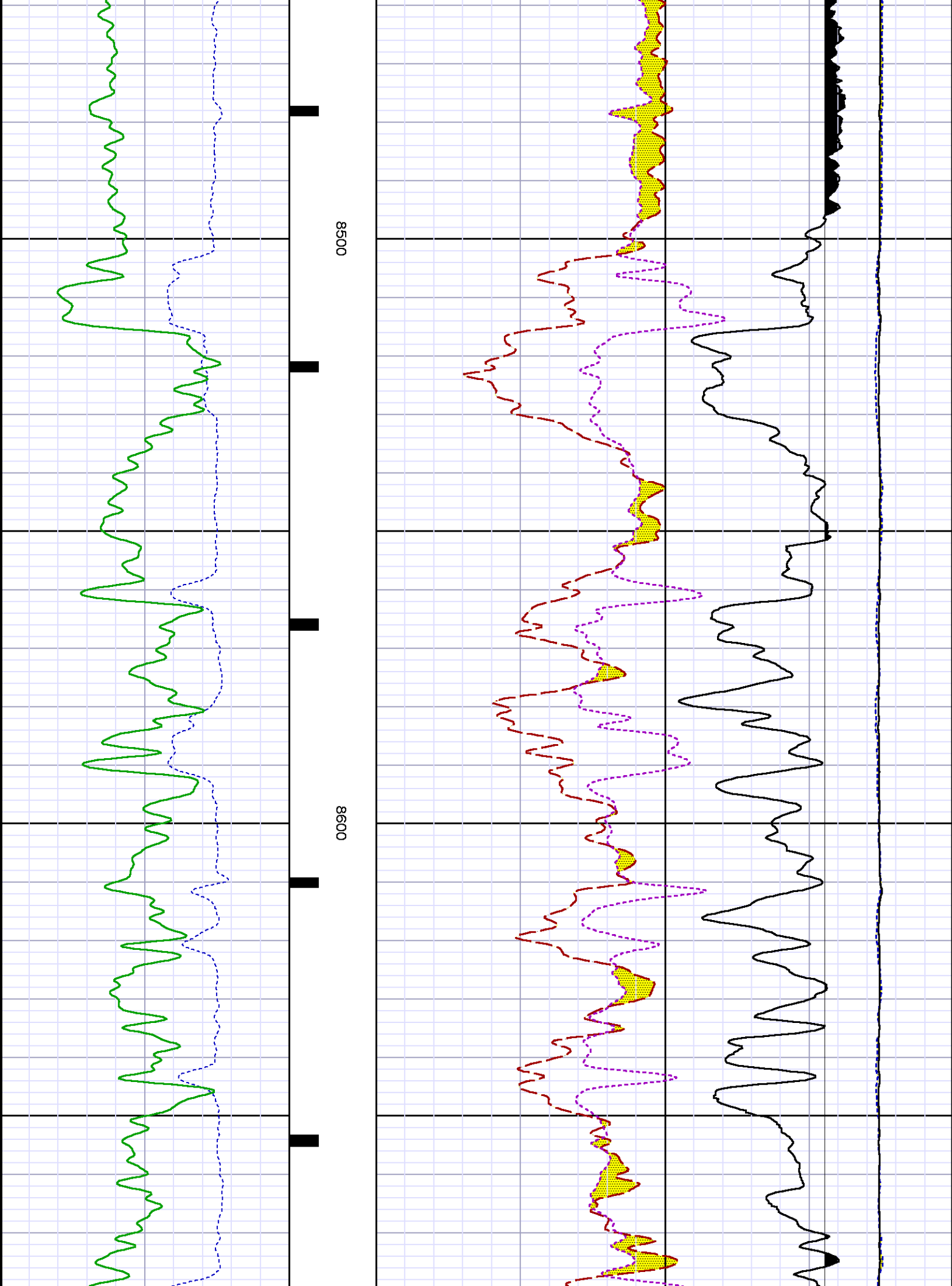


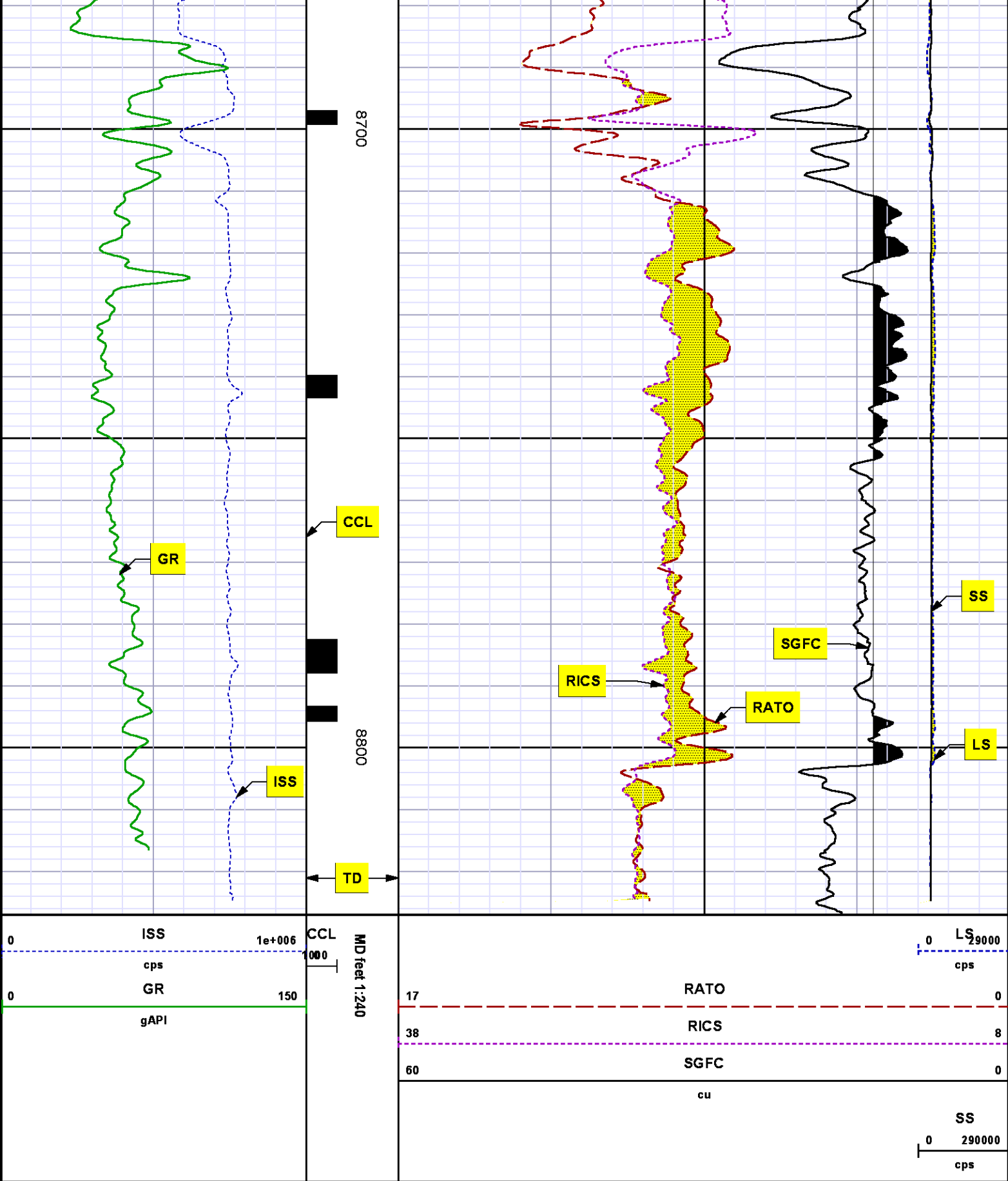


8300

8400







REPEAT SECTION

END OF LOG

## SPL PROCESSING

| MEASUREMENT TYPE | PARAMETER     | VALUE          | UNITS | TOP      | BOTTOM   |
|------------------|---------------|----------------|-------|----------|----------|
| PNC Porosity     | Borehole      | Cased          |       | 7993.679 | 8311.116 |
| PNC Porosity     | Borehole Size | 8.750          | inch  | 7993.679 | 8311.116 |
| PNC Porosity     | Casing Size   | 4.500          | inch  | 7993.679 | 8311.116 |
| PNC Porosity     | Gas Filled    | Non Gas Filled |       | 7993.679 | 8311.116 |
| PNC Porosity     | Matrix        | Sandstone      |       | 7993.679 | 8311.116 |

## DEPTH OFFSETS

(for Acquired Curves)

| SERIES | DEPTH OFFSET | ACQUIRED CURVES   |
|--------|--------------|---|
| 8248ED | -14.478      | FLTM  |
| 8248ED | -12.478      | CCL    CHV  |
| 2812LA | -9.928       | GR  |
| 8281XA | -0.662       | HVC3Q0   SEQ3   AMA3   AML3   BKX   CXS<br>CPT3Q0   CPT3Q2   CPT3Q3   CPT3Q4   ET3   IXS<br>MCS3   MCS3Q0   QCAL3   RGN3   RICX   SDA3<br>SDL3   SGA3   SGL3   STA3   XS   ASPEC3<br>AMB3   AMF3   CHF3   IXSC   IXSN   RATO23<br>RICXC   RIN13C   RIN23   RIN23C   SD3D   SG3D<br>SGB3   SGF3   WIDTH3   CXSR   IXSR   XSR<br>RICXR  |
| 8281XA | -0.250       | HVC2Q0   SEQ2   AMA2   AMB2   AMF2   AML2<br>BKL   CHF2   CLS   CPT2Q0   CPT2Q2   CPT2Q3<br>CPT2Q4   ET2   ILS   LS   MCS2   MCS2Q0<br>QCAL2   RGN2   RICL   RONE23   RTWO23   SDA2<br>SDL2   SGA2   SGB2   SGF2   SGK2   SGL2<br>STA2   ASPEC2   ILSC   ILSN   WIDTH2   RICLC<br>CLSR   ILSR   LSR   RICLR   |
| 8281XA | 0.000        | CPRS   HVC1Q0   MV   SEQ   SEQ1   AMA1<br>AMB1   AME1   AMF1   AML1   BKS   CHF1<br>CSS   CORB   CORF   CPT1Q0   CPT1Q2   CPT1Q2A<br>CPT1Q2B   CPT1Q2C   CPT1Q3   CPT1Q4   CPT1Q5   ET1<br>G1   G2   GE1S   GE2S   ISS   MCS1<br>MCS1Q0   QA1   QCAL1   QM1   RATO   RATO13<br>RBOR   RGN1   RICS   RIN   RONE   RPOR<br>RTWO   RIN13   RONE13   RTWO13   SALB   SC1<br>SDA1   SDL1   SGA1   SGB1   SGBC   SGE1<br>SGF1   SGFC   SGK1   SGL1   SS   SS2 |

STA1 PD1S PD2S PD3S MD1S MD2S  
MD3S DG1S DG2S DG3S PD1M PD2M  
PD3M MD1M MD2M MD3M DG1M DG2M  
DG3M MVS MA MVM FILV IAM  
TA PVM PVS IAS SSTAT QPD1  
QPD2 QPD3 QMD1 QMD2 QMD3 QDG1  
QDG2 QDG3 QMA QTA QFILV QMV  
QPV QIA DERR DCNT QPK1 QSA1  
PKS1 ASPEC1 H0C FE2XC ISSC RINC  
ISSN RDEN WDH1 RICSC CSSR G1R  
G2R ISSR SSR SS2R RATOR RATO13R  
RBORR RICS RINR RIN13R RNER RPORR  
RTWOR  
TEN TTEN

SYSTEM

0.000

Created by : RPM9, v5.3.1.0

Plotted by : PlotMgr, v5.4.504

Company : WPX ENERGY

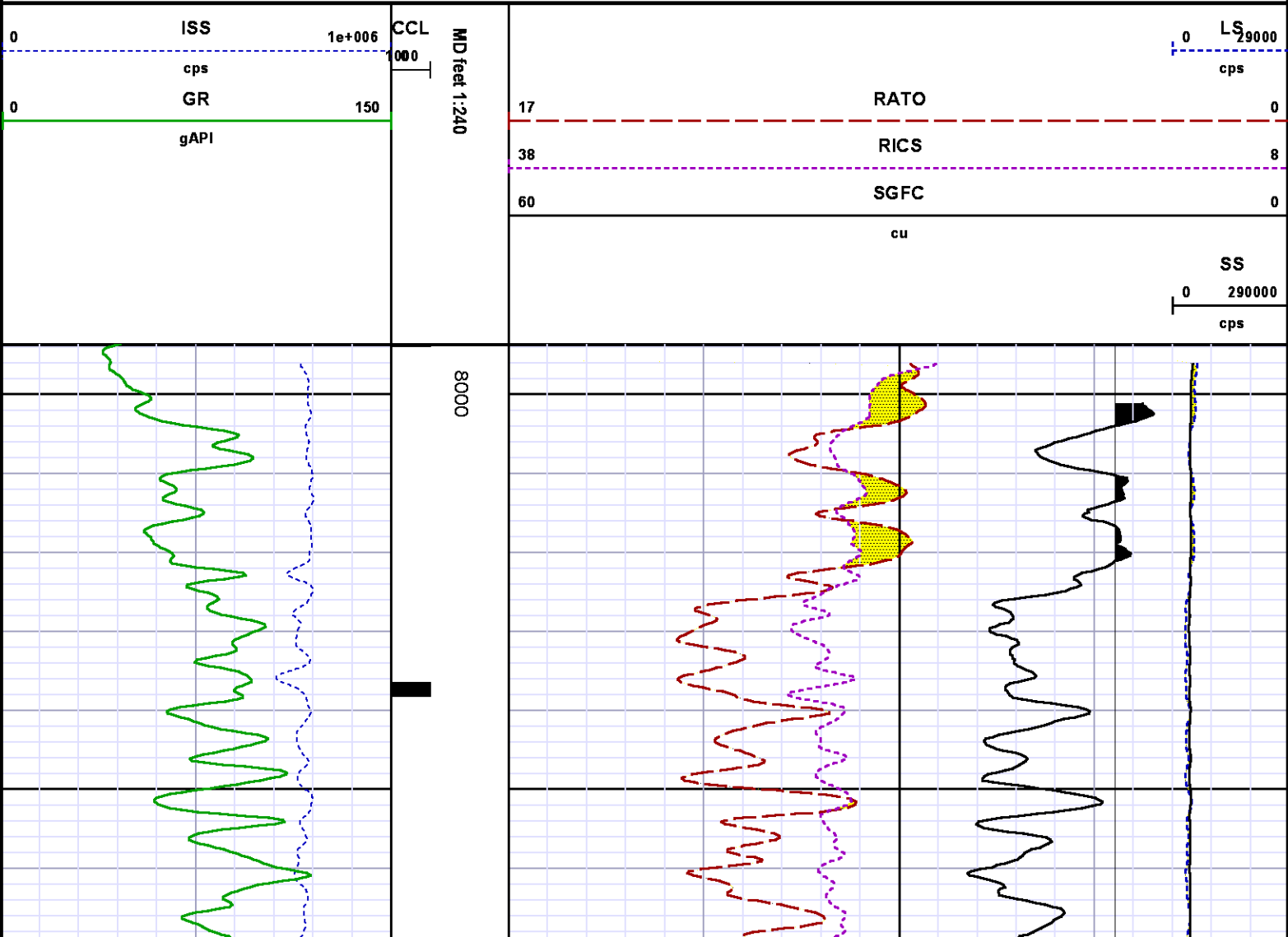
Well : WPX ENERGY RWF 523.4

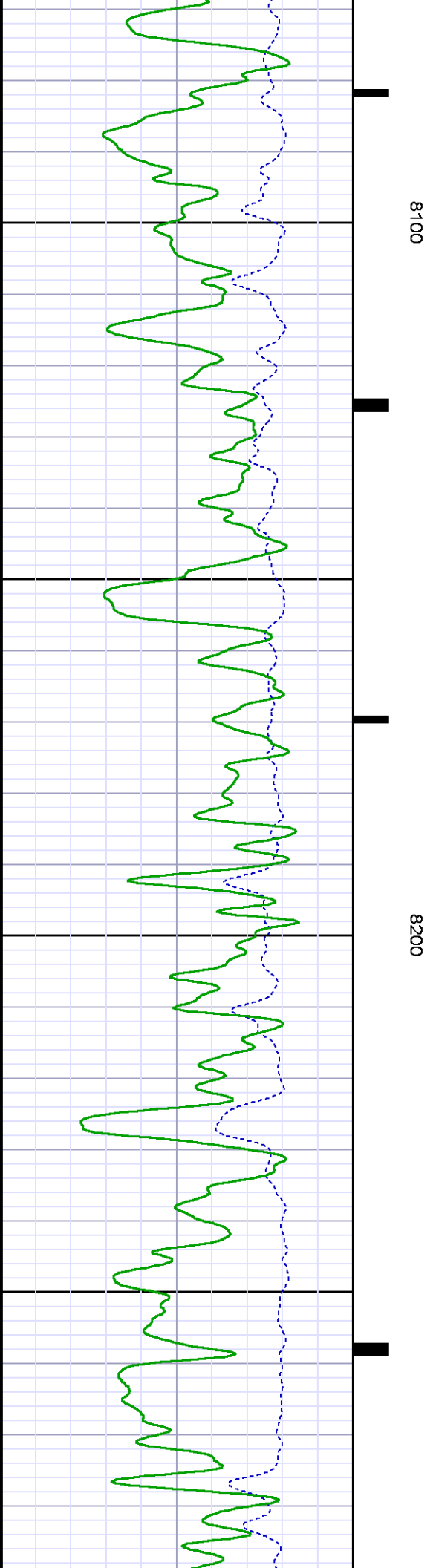
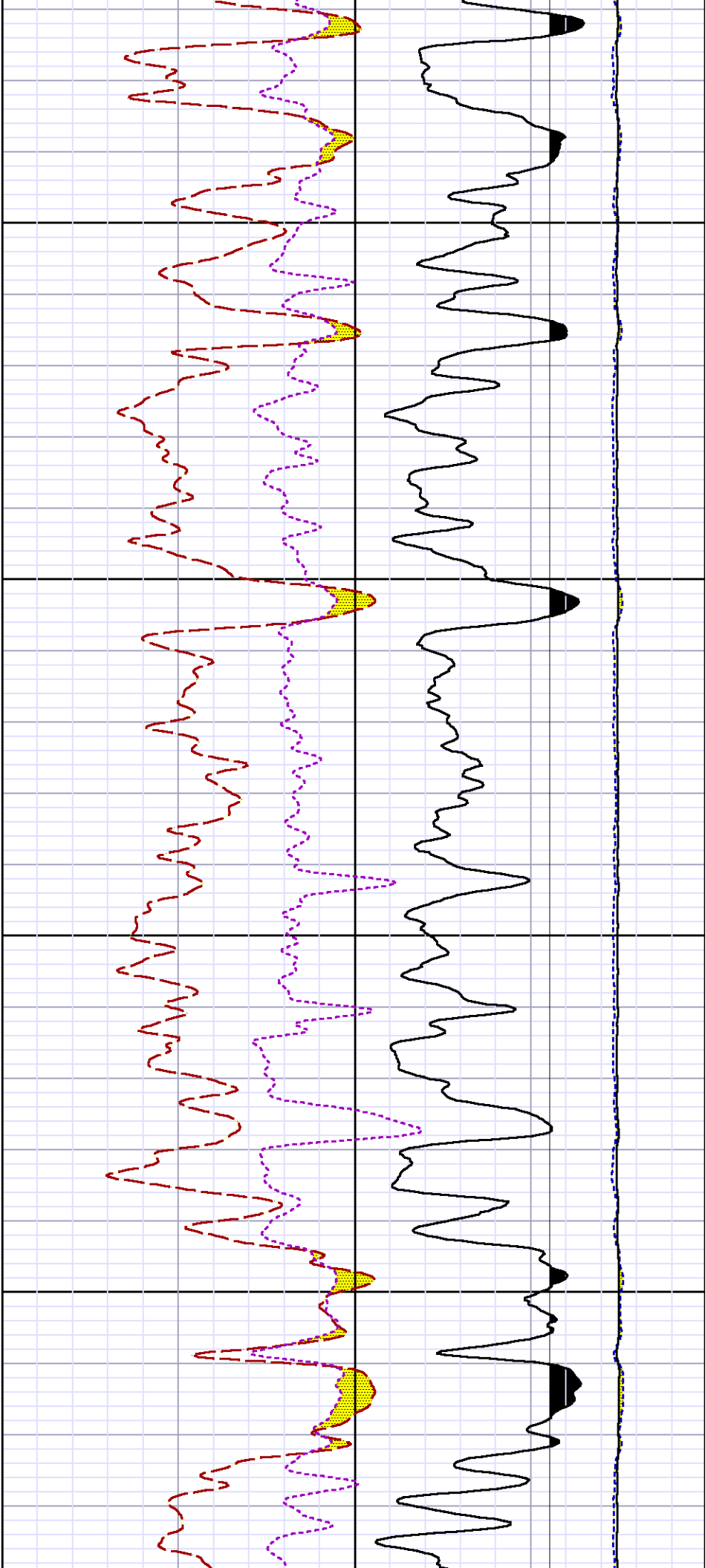
File Name : d:\well\data\wpx energy\rwf 523-4\523rplrepeat.xtf

Mode : PlotMgr 5.4.504

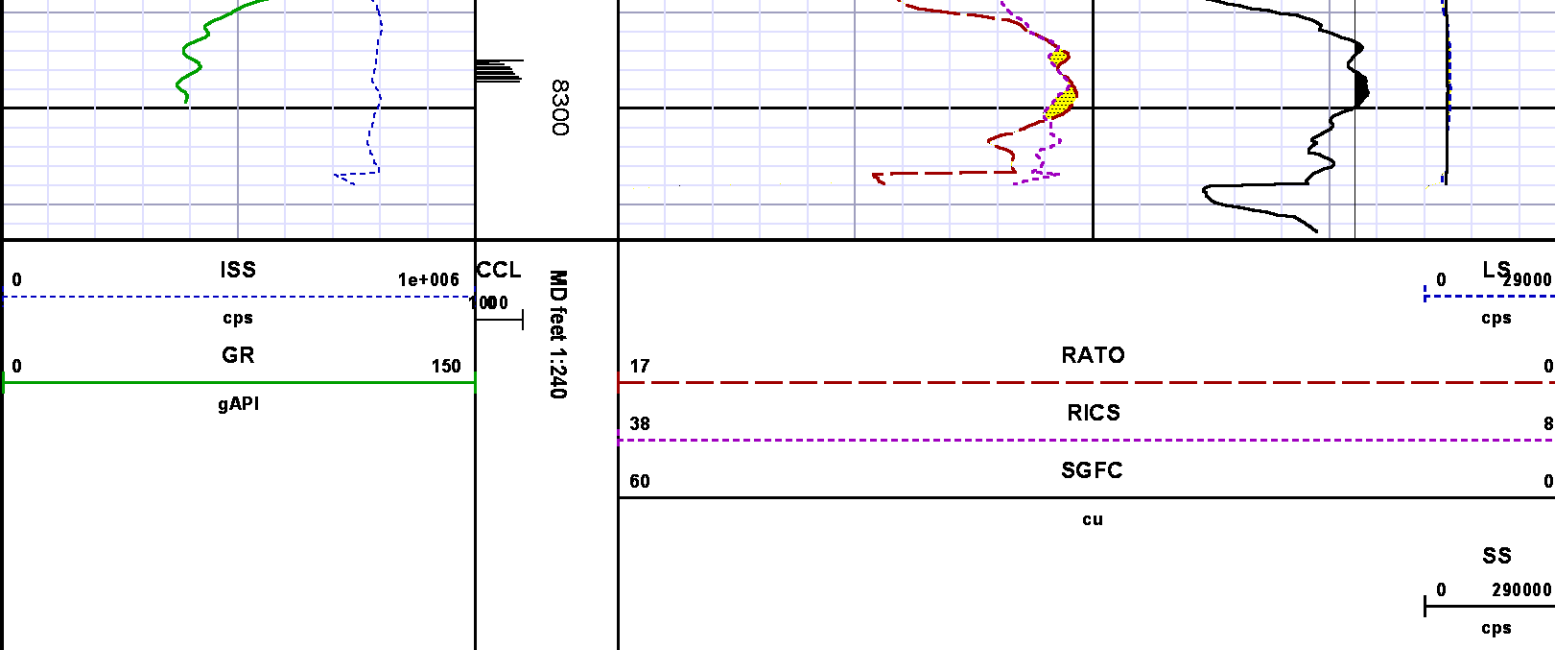
Interval : 7993.68 - 8313.68 feet UP

Created : 1/15/2014 11:25:15 AM









## CALIBRATION SUMMARY

## GAMMA RAY

Calibration File: C:\case\calver\GR\385J9.cal

### CALIBRATION SUMMARY

DATE/TIME PERFORMED: Thu Jan 09 15:25:11 2014 TOOL SERIES: 2812LA ASSET: 385 SEQ: J9

| Calibrator # | Background<br>[cps] | Calibrator On<br>[cps] | Multiplicative | Background<br>[api] | Calibrator On<br>[api] | Differential<br>[api] |
|--------------|---------------------|------------------------|----------------|---------------------|------------------------|-----------------------|
| S2K WA612    | 62.82               | 283.64                 | 0.951          | 59.74               | 269.74                 | 210.00                |

Verification File: C:\case\calver\GR\385J9.VP

### PRIMARY VERIFICATION

DATE/TIME PERFORMED: Thu Jan 09 15:29:10 2014 TOOL SERIES: 2812LA ASSET: 385 SEQ: J9

| Calibrator # | Background<br>[cps] | Calibrator On<br>[cps] | Multiplicative | Background<br>[api] | Calibrator On<br>[api] | Differential<br>[api] |
|--------------|---------------------|------------------------|----------------|---------------------|------------------------|-----------------------|
| S2K WA612    | 63.02               | 280.18                 | 0.951          | 59.93               | 266.45                 | 206.51                |

## PNC

Calibration File: C:\case\calver\PNC\25109.cal

PNC 3D CALIBRATION SUMMARY

DATE/TIME PERFORMED: Thu Jan 09 13:52:50 2014 TOOL SERIES: 8281XA ASSET: 251 SEQ: 09

Calibrator #

2437xa 112674

Source #

8281AA 11710723

|              | ISS     | Mtr VIts<br>(V) | SS Gain | LS Gain | XLS Gain | EA Temp<br>(degF) | Sync Delay<br>(usec) | RCAL   |
|--------------|---------|-----------------|---------|---------|----------|-------------------|----------------------|--------|
| Raw Data     | 819308  | 126.00          | 2318.00 | 2300.00 | 2316.00  | 105.85            | 7.00                 | 0.9659 |
| Interpolated | 1300000 | 148.82          | 2295.49 | 2292.82 | 2311.15  |                   |                      |        |

|          | ISS    | BKS     | BKL     | BKX    | SGA1        | SDA1      | SGA2        | SDA2      |
|----------|--------|---------|---------|--------|-------------|-----------|-------------|-----------|
| Raw Data | 819308 | 8728.78 | 1422.36 | 169.93 | 25.81       | 0.14      | 24.45       | 0.28      |
|          |        |         |         |        | 25.35 26.40 | 0.00 0.20 | 23.60 24.80 | 0.00 0.40 |

|               | ISS    | ILS       | IXS      | SS       | SS2      | LS      | CSS      | CLS      |
|---------------|--------|-----------|----------|----------|----------|---------|----------|----------|
| Raw Data      | 819308 | 168603.72 | 26468.94 | 89281.43 | 31777.24 | 8171.71 | 54092.83 | 13092.07 |
| Fit Quality % |        | 1.31      | 1.14     | 0.94     | 0.93     | 1.10    | 0.85     | 1.16     |

|               | ISS     | RBOR      | RIN<br>ISS/ILS | RIN13<br>ISS/IXS | RICS<br>ISS/CSS | RATO<br>SS/LS | RTWO<br>SS2/LS | RONE<br>CSS/CLS |
|---------------|---------|-----------|----------------|------------------|-----------------|---------------|----------------|-----------------|
| Raw Data      | 819308  | 1.43      | 4.86           | 30.96            | 15.15           | 10.93         | 3.89           | 4.13            |
|               |         | 1.42 1.45 | 3.55 5.52      | 22.20 32.70      | 10.99 16.34     | 10.06 11.10   | 3.57 3.95      | 3.76 4.22       |
| Fit Quality % |         | 0.07      | 0.14           | 0.17             | 0.11            | 0.14          | 0.16           | 0.16            |
| Reduced       | 1426897 | 1.43      | 4.87           | 31.02            | 15.21           | 10.91         | 3.88           | 4.13            |
|               |         | 1.42 1.45 | 4.33 5.52      | 27.60 32.70      | 13.70 16.34     | 10.06 11.10   | 3.57 3.95      | 3.76 4.22       |

PNC #2

Calibration File: C:\case\calver\PNCL23109.cal

PNC 3D CALIBRATION SUMMARY

DATE/TIME PERFORMED: Thu Jan 09 11:00:09 2014 TOOL SERIES: 8281XA ASSET: 231 SEQ: 09

Calibrator #

2437xb 112674

Source #

8281AA 11724361

|              | ISS     | Mtr VIts<br>(V) | SS Gain | LS Gain | XLS Gain | EA Temp<br>(degF) | Sync Delay<br>(usec) | RCAL   |
|--------------|---------|-----------------|---------|---------|----------|-------------------|----------------------|--------|
| Raw Data     | 811530  | 119.00          | 2270.00 | 2292.00 | 2289.00  | 104.06            | 7.00                 | 0.9637 |
| Interpolated | 1300000 | 140.18          | 2248.77 | 2286.36 | 2284.50  |                   |                      |        |

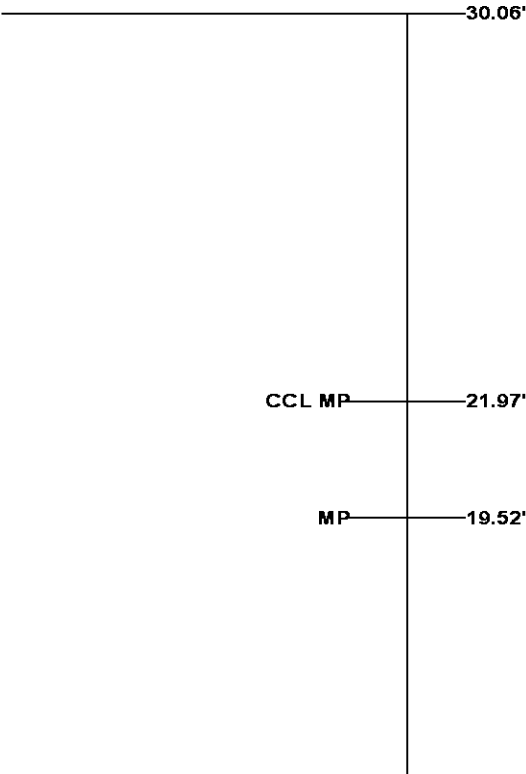
|          | ISS    | BKS     | BKL     | BKX    | SGA1        | SDA1      | SGA2        | SDA2      |
|----------|--------|---------|---------|--------|-------------|-----------|-------------|-----------|
| Raw Data | 811530 | 6704.99 | 1062.91 | 139.64 | 25.78       | 0.14      | 24.48       | 0.28      |
|          |        |         |         |        | 25.35 26.40 | 0.00 0.20 | 23.60 24.80 | 0.00 0.40 |

|               | ISS    | ILS       | IXS      | SS       | SS2      | LS      | CSS      | CLS      |
|---------------|--------|-----------|----------|----------|----------|---------|----------|----------|
| Raw Data      | 811530 | 171239.95 | 26568.92 | 90128.21 | 32072.29 | 8198.67 | 54502.86 | 13146.01 |
| Fit Quality % |        | 1.07      | 1.32     | 1.29     | 1.28     | 1.11    | 1.19     | 1.15     |

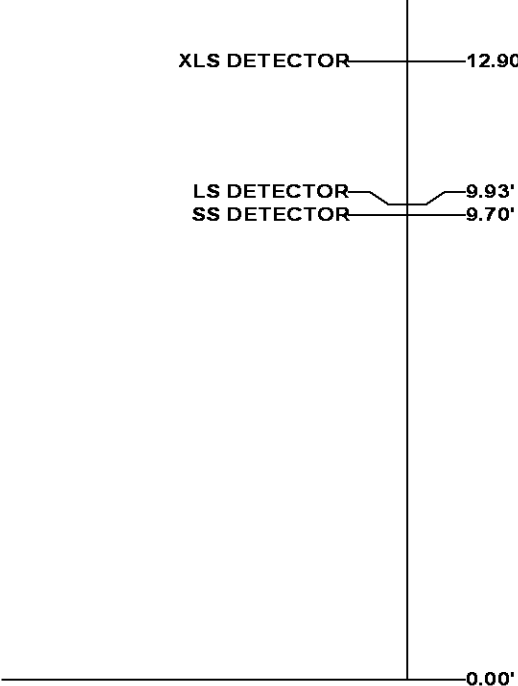
|               | ISS     | RBOR |      | RIN<br>ISS/ILS |      | RIN13<br>ISS/IXS |       | RICS<br>ISS/CSS |       | RATO<br>SS/LS |       | RTWO<br>SS2/LS |      | RONE<br>CSS/CLS |      |
|---------------|---------|------|------|----------------|------|------------------|-------|-----------------|-------|---------------|-------|----------------|------|-----------------|------|
| Raw Data      | 811530  | 1.43 |      | 4.74           |      | 30.55            |       | 14.89           |       | 10.99         |       | 3.91           |      | 4.15            |      |
|               |         | 1.42 | 1.45 | 3.55           | 5.52 | 22.20            | 32.70 | 10.99           | 16.34 | 10.06         | 11.10 | 3.57           | 3.95 | 3.76            | 4.22 |
| Fit Quality % |         | 0.09 |      | 0.08           |      | 0.03             |       | 0.08            |       | 0.13          |       | 0.12           |      | 0.08            |      |
| Reduced       | 1401386 | 1.43 |      | 4.76           |      | 30.65            |       | 14.95           |       | 10.98         |       | 3.91           |      | 4.14            |      |
|               |         | 1.42 | 1.45 | 4.33           | 5.52 | 27.60            | 32.70 | 13.70           | 16.34 | 10.06         | 11.10 | 3.57           | 3.95 | 3.76            | 4.22 |

TOOL DIAGRAM



| OTA SHORT CABLE HEAD |              |
|----------------------|--------------|
| PCM POWER SUPPLY     |              |
| Series               | 8250EA       |
| Mnemonic             | PCM          |
| Diameter             | 1.70"        |
| Weight               | 18.00 lb     |
| Length               | 3.86'        |
| Temp Rating          | 350.00 °F    |
| TELEMETRY / CCL      |              |
| Series               | 8248EA       |
| Mnemonic             | PCM          |
| Diameter             | 1.70"        |
| Weight               | 20.00 lb     |
| Length               | 4.46'        |
| Measure Point        | 1.00' CCL MP |
| Temp Rating          | 350.00 °F    |
| Press Rating         | 15000.00 PSI |
| SONDEX GAMMA RAY     |              |
| Series               | 2812LA       |
| Mnemonic             | SNDX         |
| Diameter             | 1.69"        |



| RESERVOIR PERFORMANCE MONITOR |                     |
|-------------------------------|---------------------|
| Series                        | 8281XA              |
| Mnemonic                      | RPM                 |
| Diameter                      | 1.70"               |
| Weight                        | 75.00 lb            |
| Length                        | 18.58'              |
| Measure Point                 | 9.49' SS DETECTOR   |
| Measure Point                 | 9.72' LS DETECTOR   |
| Measure Point                 | 12.69' XLS DETECTOR |
| Temp Rating                   | 350.00 °F           |
| Press Rating                  | 20000.00 PSI        |



Total Length: 30.06'  
Total Weight: Not Available  
Max Diameter: 0' 1.70"

|  |                                   |                      |            |          |                |     |
|--|-----------------------------------|----------------------|------------|----------|----------------|-----|
| <div><br/><b>BAKER HUGHES</b></div> <div>Baker Atlas</div> <div></div> | Company                           | WPX ENERGY           |            | File No: | CH081546       |     |
|  | Well                              | WPX ENERGY RWF 523-4 |            | API No:  | 05045220910000 |     |
|  | Field                             | RULISON              |            |          |                |     |
|  | County                            | GARFIELD             | State      | COLORADO |                |     |
|  | Location                          |                      | Elevations |          |                |     |
|  | SHL: 454' FNL X 1717' FEL         |                      | KB         | 5820 ft  | 4 7S 94W       |     |
|  | BHL: 2568' FSL X 2017' FWL (NESW) |                      | DF         |          | RMV 108-4 PAD  |     |
|  |                                   |                      | GL         | 5794 ft  | NABORS 574     |     |
|  | SEC                               | 4                    | TWP        | 7S       | RGE            | 94W |