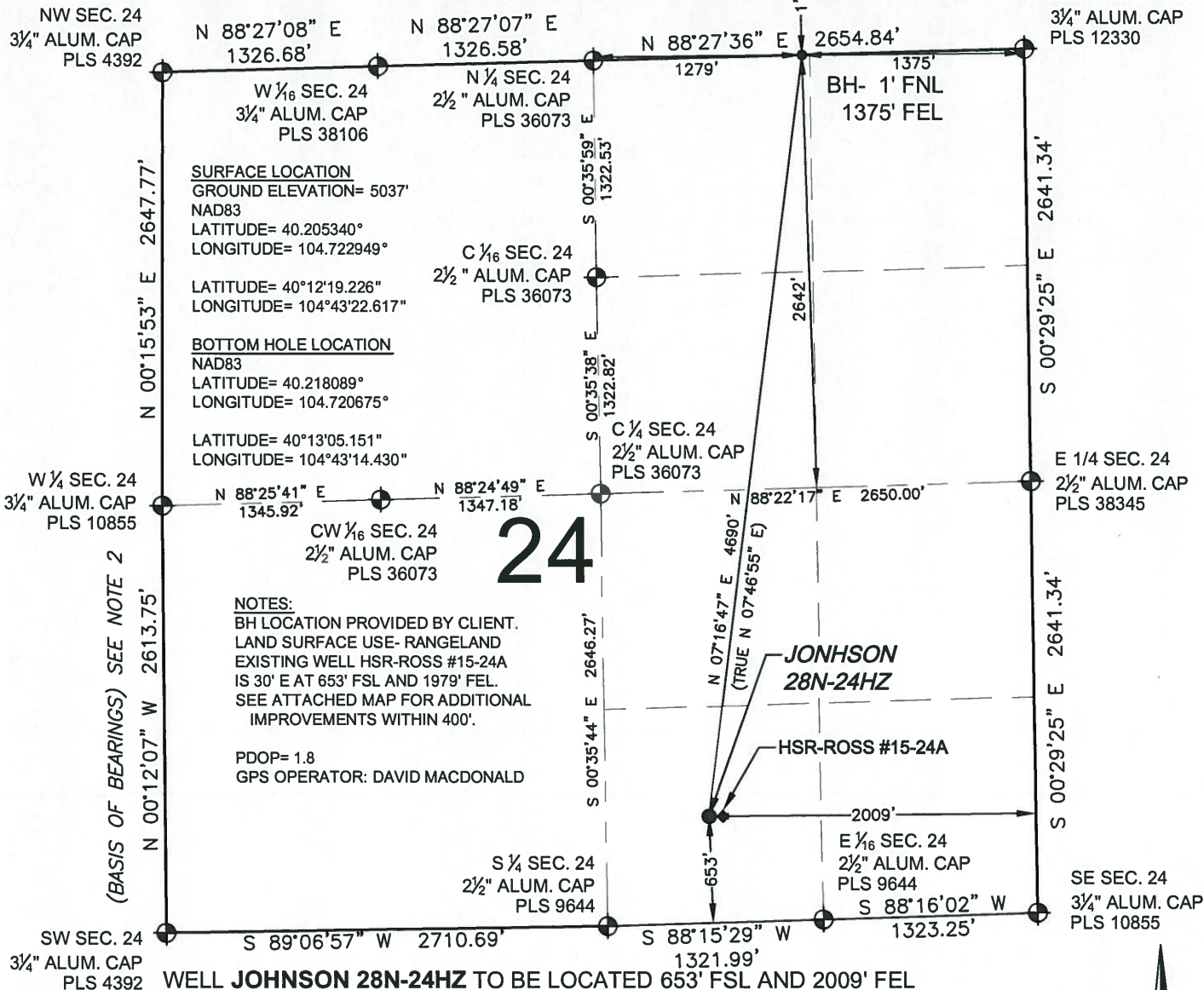


WELL LOCATION CERTIFICATE: JOHNSON 28N-24HZ

SECTION 24, TOWNSHIP 3 NORTH, RANGE 66 WEST, 6TH P.M.

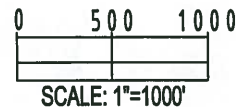


NOTES:
 BH LOCATION PROVIDED BY CLIENT.
 LAND SURFACE USE- RANGELAND
 EXISTING WELL HSR-ROSS #15-24A
 IS 30' E AT 653' FSL AND 1979' FEL.
 SEE ATTACHED MAP FOR ADDITIONAL
 IMPROVEMENTS WITHIN 400'.

PDOP= 1.8
 GPS OPERATOR: DAVID MACDONALD

LEGEND

- ⊕ = EXISTING MONUMENT
- ⬤ = PROPOSED WELL
- ⬥ = BOTTOM HOLE
- ◆ = EXISTING WELL
- BH = BOTTOM HOLE

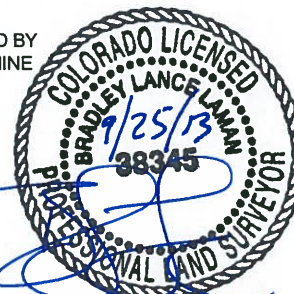


NOTES:

- THIS FIELD SURVEY CONFORMS TO THE MINIMUM STANDARDS SET BY THE C.O.G.C.C., RULE NO. 215
- BEARINGS AND DISTANCE SHOWN HEREON ARE GRID BASED ON THE COLORADO STATE PLANE COORDINATE SYSTEM, NAD 83/2011 BETWEEN MONUMENTS AS LABELED HEREON AND ELEVATIONS SHOWN ARE NAVD 88, AS DERIVED BY GPS OBSERVATIONS.
- GRID DISTANCES ARE SHOWN, AS MEASURED IN THE FIELD, WITH TIES TO WELLS MEASURED PERPENDICULAR TO SECTION LINES.

I, BRADLEY L. LAMAN, A LICENSED PROFESSIONAL LAND SURVEYOR IN THE STATE OF COLORADO DO HEREBY CERTIFY TO KERR-MCGEE OIL & GAS ONSHORE LP, THAT THE SURVEY AND WELL LOCATION CERTIFICATE SHOWN HEREON WERE DONE BY ME OR UNDER MY DIRECT SUPERVISION AND THAT THE DRAWING SHOWN HEREON ACCURATELY DEPICTS THE PROPOSED LOCATION OF THE WELL. THIS CERTIFICATE DOES NOT REPRESENT A LAND SURVEY PLAT OR IMPROVEMENT SURVEY PLAT AS DEFINED BY C.R.S. 38-51-102 AND CANNOT BE RELIED UPON TO DETERMINE OWNERSHIP.

BRADLEY L. LAMAN, PLS 38345
 COLORADO LICENSED PROFESSIONAL LAND SURVEYOR
 FOR AND ON BEHALF OF P.F.S., LLC

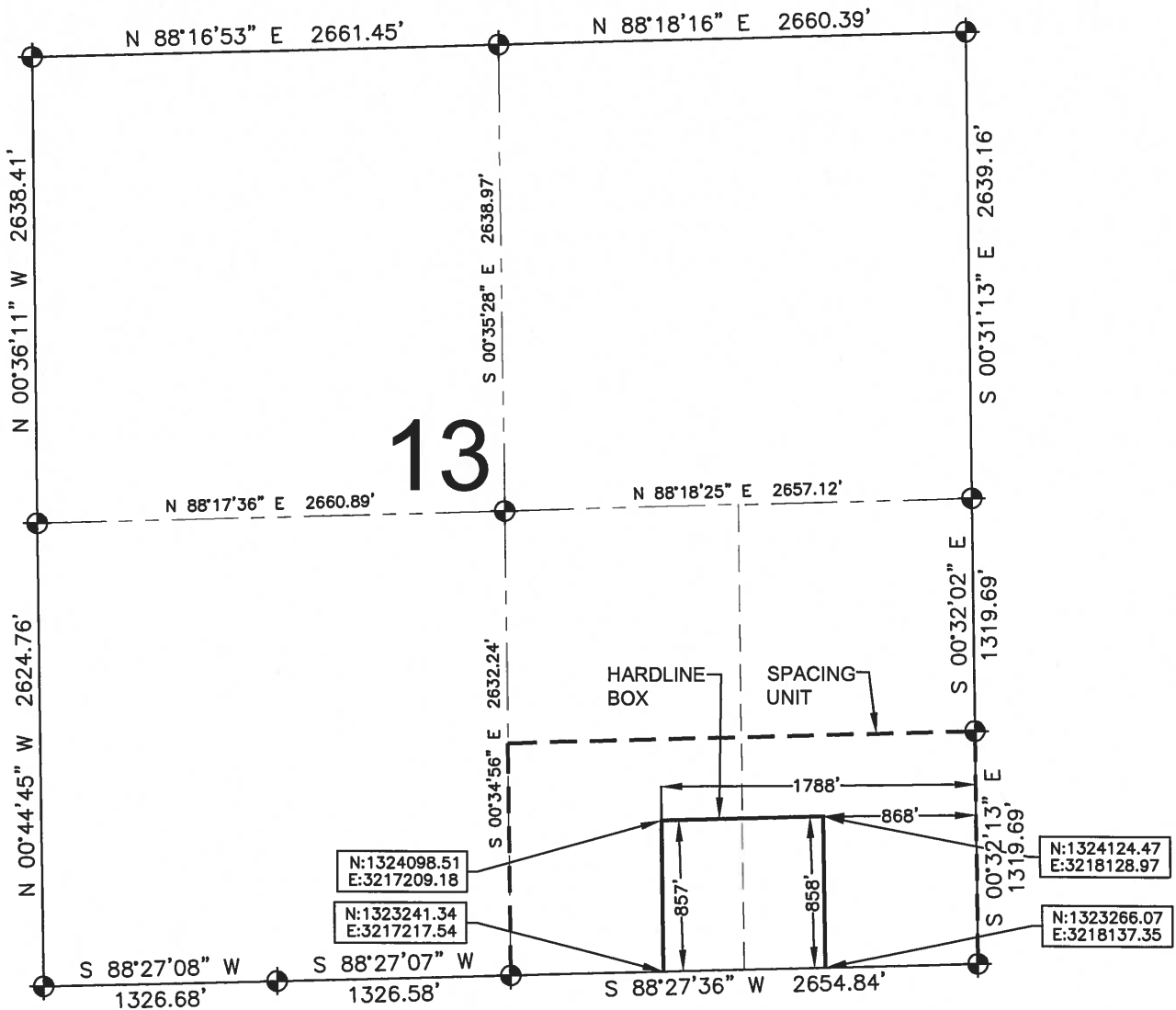


PREPARED BY: Petroleum Field Services, LLC 1801 W. 13th Ave. Denver, CO 80204	FIELD DATE: 08-22-12	SURFACE LOCATION: SW 1/4 SE 1/4, SEC. 24, T3N, R66W, 6TH P.M. WELD COUNTY, COLORADO
	DRAWING DATE: 09-16-13	BY: CPO CHECKED: JAH

NOTICE: ACCORDING TO COLORADO LAW YOU MUST COMMENCE ANY LEGAL ACTION BASED UPON ANY DEFECT IN THIS SURVEY WITHIN THREE YEARS AFTER YOU FIRST DISCOVER SUCH DEFECT. IN NO EVENT MAY ANY ACTION BASED UPON ANY DEFECT IN THIS SURVEY BE COMMENCED MORE THAN TEN YEARS FROM THIS SAID DATE OF THIS CERTIFICATION SHOWN HEREON.

HARDLINE EXHIBIT: JOHNSON 28N-24HZ

SECTION 13, TOWNSHIP 3 NORTH, RANGE 66 WEST, 6TH P.M.



LEGEND

- ⊕ = EXISTING MONUMENT ⊕ = BOTTOM HOLE
- = PROPOSED HEEL BH = BOTTOM HOLE

HEEL LOCATION

NAD83
 LATITUDE= 40.202598°
 LONGITUDE= 104.720678°

QRT/QRT SECTIONS WITHIN PATH OF THE HARDLINE.

SESE, SEC. 13
 SWSE, SEC. 13

LATITUDE= 40°12'09.351"
 LONGITUDE= 104°43'14.440"

BOTTOM HOLE LOCATION

NAD83
 LATITUDE= 40.218098°
 LONGITUDE= 104.720675°

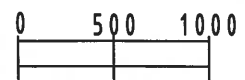
AVAILABLE FOOTAGE

6996'

LATITUDE= 40°13'05.151"
 LONGITUDE= 104°43'14.430"

NOTES:

- THIS DOCUMENT IS NOT A LAND SURVEY PLAT OR IMPROVEMENT SURVEY PLAT. THIS DOCUMENT DOES NOT REFLECT A FIELD SURVEY. SECTION BREAKDOWN, MONUMENTATION AND HORIZONTAL POSITIONS SHOWN ARE BASED ON THE HEEL AND BOTTOM HOLE LOCATION PROVIDED BY ANADARKO PETROLEUM CORPORATION



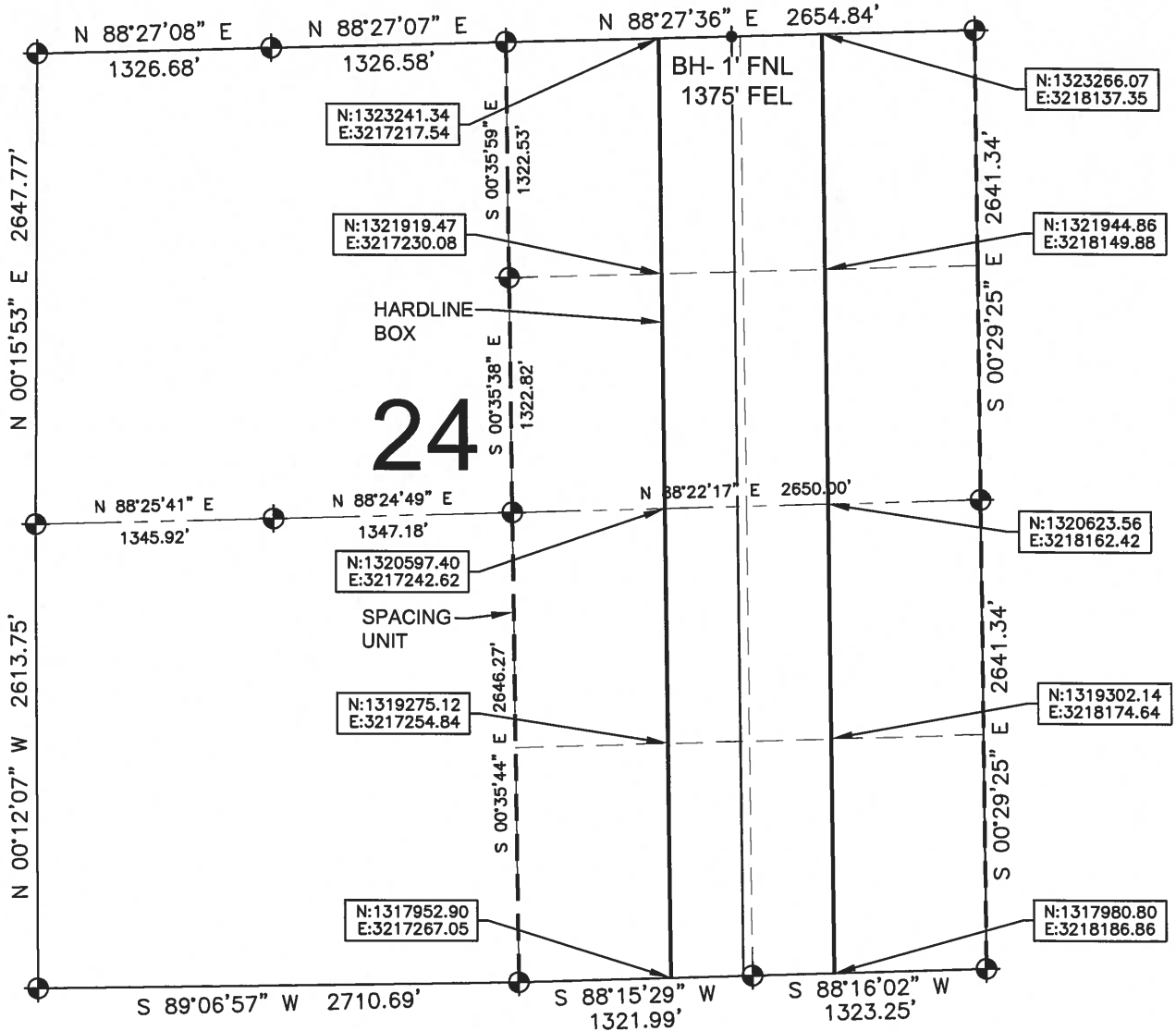
SCALE: 1"=1000'



DRAWING DATE: 02-13-14		HEEL LOCATION: NW 1/4 NE 1/4, SEC. 25, T3N, R66W, 6TH P.M. WELD COUNTY, COLORADO	
BY: SMF	CHECKED: DRF	SHEET 1 OF 3	

HARDLINE EXHIBIT: JOHNSON 28N-24HZ

SECTION 24, TOWNSHIP 3 NORTH, RANGE 66 WEST, 6TH P.M.



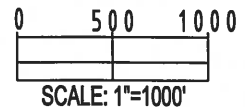
LEGEND

- ⊕ = EXISTING MONUMENT ⊕ = BOTTOM HOLE
- = PROPOSED HEEL BH = BOTTOM HOLE

QRT/QRT SECTIONS WITHIN PATH OF THE HARDLINE.

- NENE, SEC. 24 NWNE, SEC. 24
- SENE, SEC. 24 SWNE, SEC. 24
- NESE, SEC. 24 NWSE, SEC. 24
- SESE, SEC. 24 SWSE, SEC. 24

NOTES:
 1. THIS DOCUMENT IS NOT A LAND SURVEY PLAT OR IMPROVEMENT SURVEY PLAT. THIS DOCUMENT DOES NOT REFLECT A FIELD SURVEY. SECTION BREAKDOWN, MONUMENTATION AND HORIZONTAL POSITIONS SHOWN ARE BASED ON THE HEEL AND BOTTOM HOLE LOCATION PROVIDED BY ANADARKO PETROLEUM CORPORATION



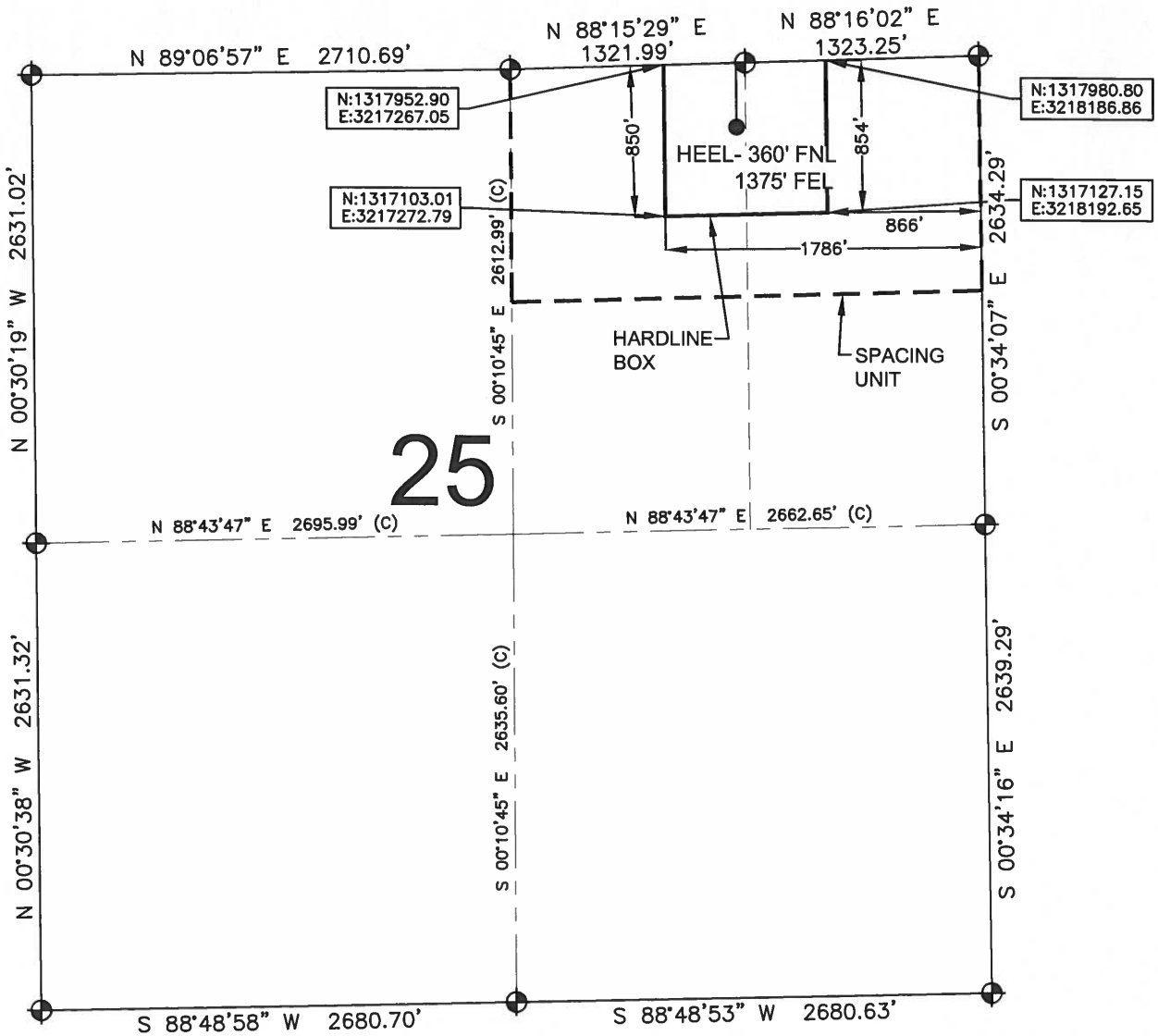
SHEET 2 OF 3



DRAWING DATE: 02-13-14		HEEL LOCATION: NW 1/4 NE 1/4, SEC. 25, T3N, R66W, 6TH P.M.	
BY: SMF	CHECKED: DRF	WELD COUNTY, COLORADO	

HARDLINE EXHIBIT: JOHNSON 28N-24HZ

SECTION 25, TOWNSHIP 3 NORTH, RANGE 66 WEST, 6TH P.M.



LEGEND

- ⊕ = EXISTING MONUMENT ⊕ = BOTTOM HOLE
- = PROPOSED HEEL BH = BOTTOM HOLE

QRT/QRT SECTIONS WITHIN PATH OF THE HARDLINE.

NENE, SEC. 25
NWNE, SEC. 25

NOTES:

1. THIS DOCUMENT IS NOT A LAND SURVEY PLAT OR IMPROVEMENT SURVEY PLAT. THIS DOCUMENT DOES NOT REFLECT A FIELD SURVEY. SECTION BREAKDOWN, MONUMENTATION AND HORIZONTAL POSITIONS SHOWN ARE BASED ON THE HEEL AND BOTTOM HOLE LOCATION PROVIDED BY ANADARKO PETROLEUM CORPORATION



DRAWING DATE: 02-13-14		HEEL LOCATION: NW 1/4 NE 1/4, SEC. 25, T3N, R66W, 6TH P.M.	
BY: SMF	CHECKED: DRF	WELD COUNTY, COLORADO	

SHEET 3 OF 3

