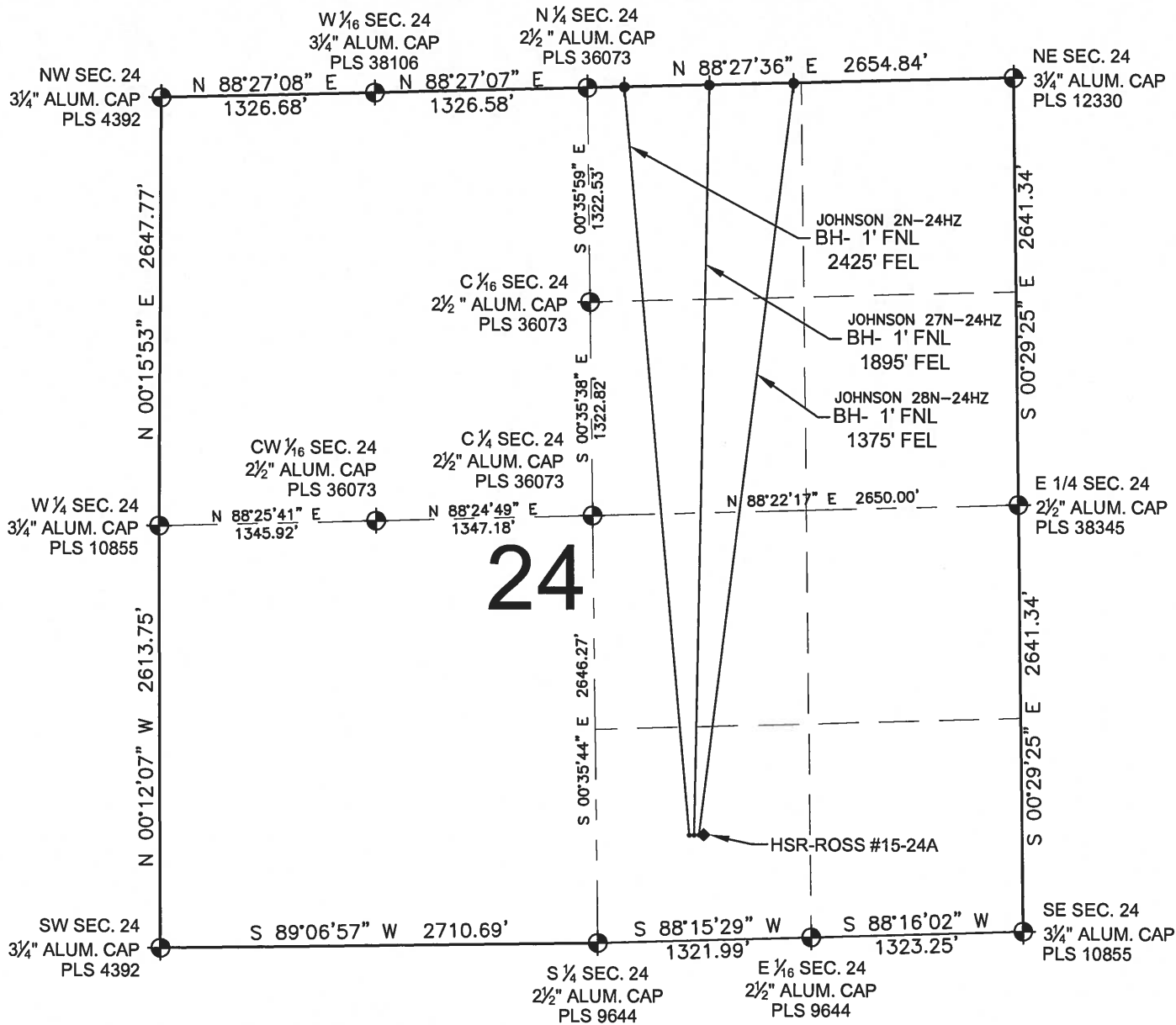


# JOHNSON 28N-24HZ MULTI-WELL PLAN

SECTION 24, TOWNSHIP 3 NORTH, RANGE 66 WEST, 6TH P.M.



**NOTES:**

JOHNSON 2N-24HZ TO BE AT 653' FSL, 2069' FEL.  
 BOTTOM HOLE AT 1' FNL & 2425' FEL.  
 JOHNSON 27N-24HZ TO BE AT 653' FSL, 2039' FEL.  
 BOTTOM HOLE AT 1' FNL & 1895' FEL.  
 JOHNSON 28N-24HZ TO BE AT 653' FSL, 2009' FEL.  
 BOTTOM HOLE AT 1' FNL & 1375' FEL.  
 HSR-ROSS #15-24A IS AT 653' FSL, 1979' FEL.

**LEGEND**

- ⊙ = EXISTING MONUMENT      ⊕ = BOTTOM HOLE      BH= BOTTOM HOLE
- = PROPOSED WELL          ⊖ = EXISTING WELL

PREPARED BY:

**PFS**



Petroleum Field Services, LLC.  
 1801 W. 13th Ave.  
 Denver, CO 80204

KERR-MCGEE OIL & GAS ONSHORE LP

FIELD DATE:  
08-22-12

DRAWING DATE:  
02-12-14

SURFACE LOCATION:

SW 1/4 SE 1/4, SEC. 24, T3N, R66W, 6TH P.M.  
 WELD COUNTY, COLORADO

