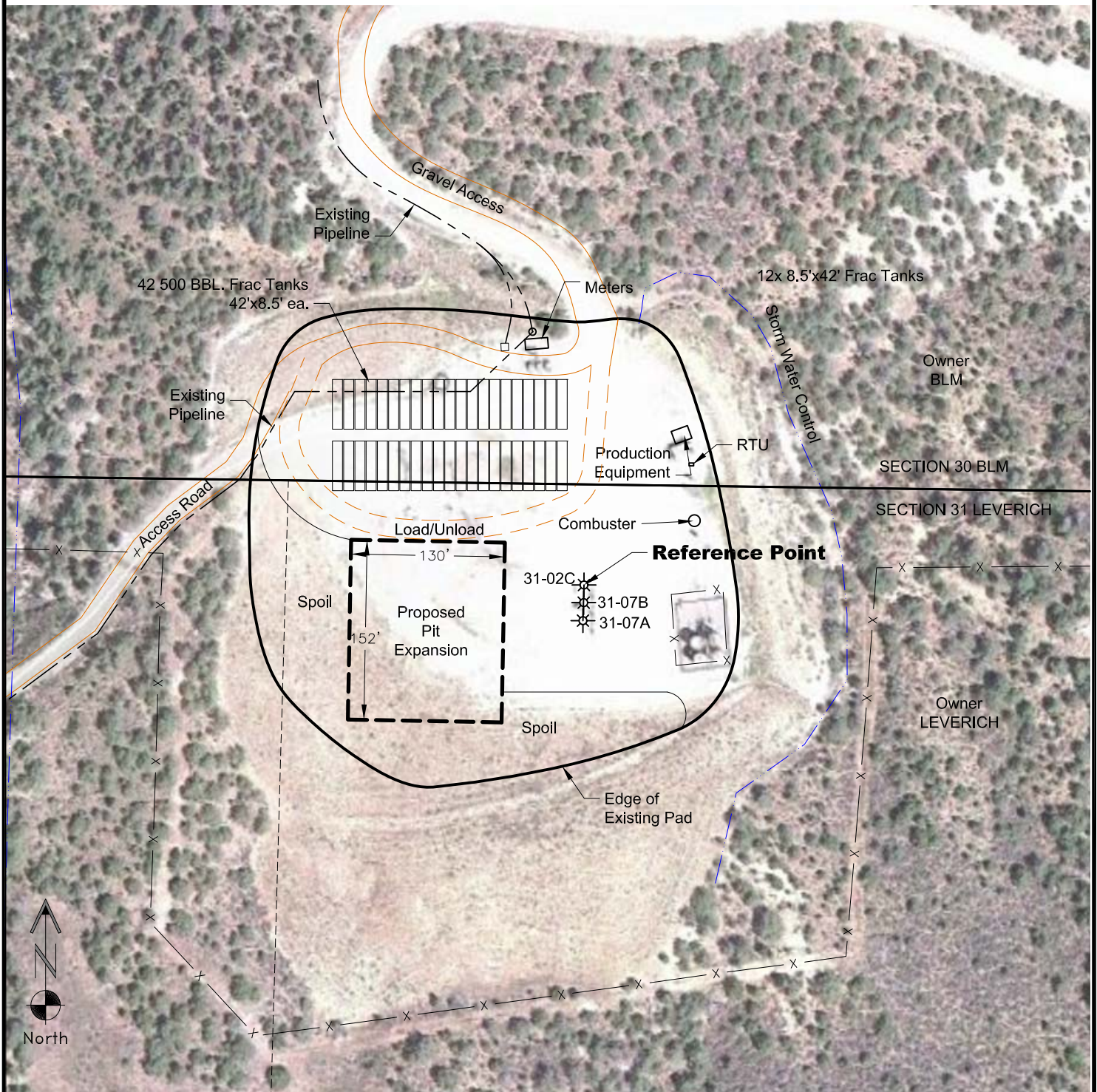


VEGETATION:  
GRASSES

SURFACE USE:  
AGRICULTURAL

## PAD LAYOUT



NOTES:  
EXISTING PAD

3/25/14



  
LAND SURVEYING AND MAPPING  
LAFAYETTE - WINTER PARK  
Ph 303 666 0379 Fx 303 665 6320

**LARAMIE ENERGY II LLC**  
**FEDERAL 31-01 PAD**

**NE1/4 NE1/4 SECTION 31 T6S R93W**  
**6th PM GARFIELD COUNTY COLORADO**