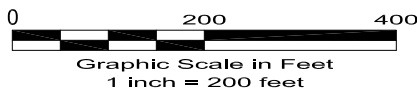
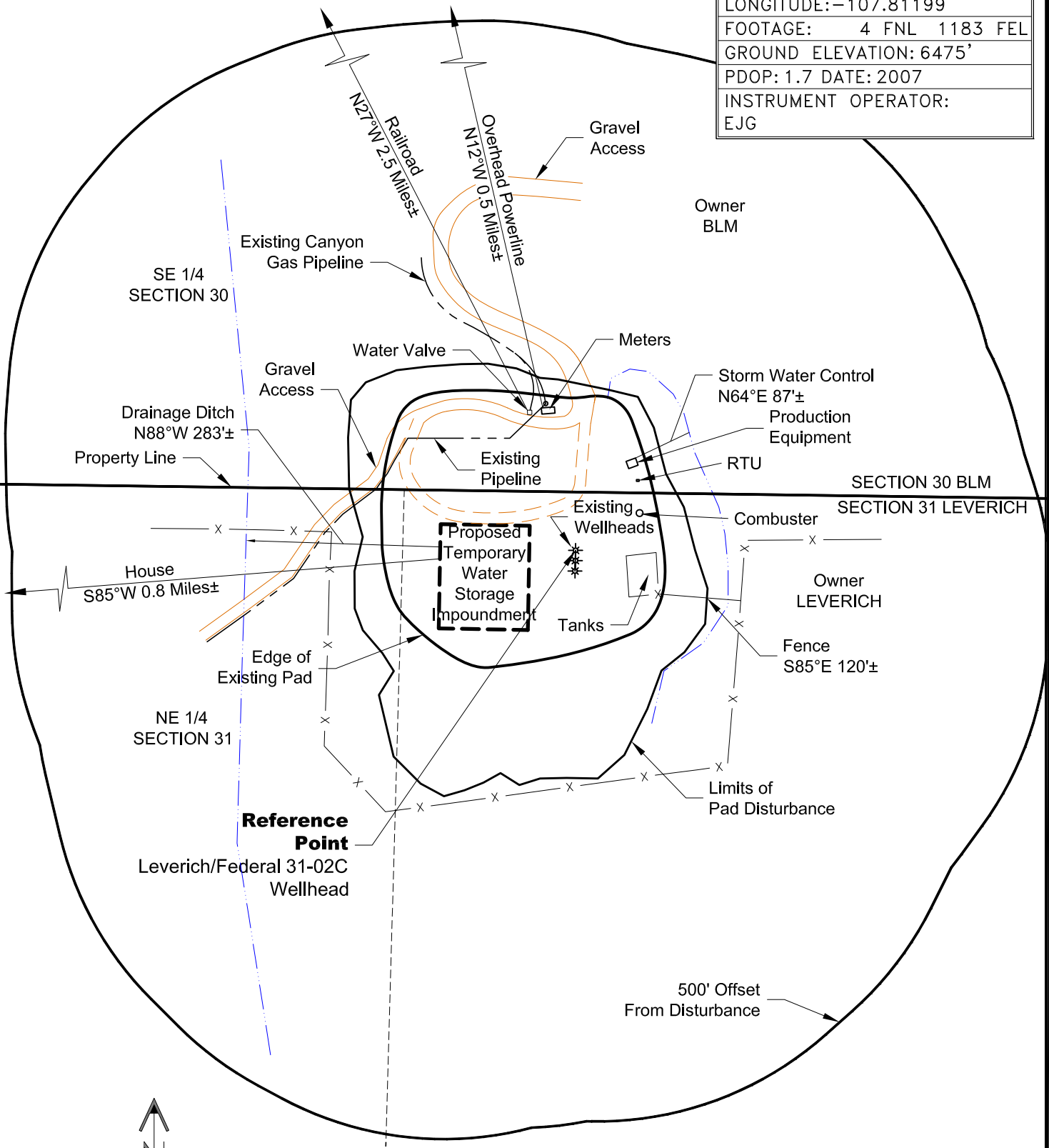


LOCATION DRAWING

REFERENCE POINT

LATITUDE: 39.48954
 LONGITUDE: -107.81199
 FOOTAGE: 4 FNL 1183 FEL
 GROUND ELEVATION: 6475'
 PDOP: 1.7 DATE: 2007
 INSTRUMENT OPERATOR:
 EJJ



LAND SURVEYING AND MAPPING
 LAFAYETTE - WINTER PARK
 Ph 303 666 0379 Fx 303 665 6320

PICEANCE ENERGY, LLC
FEDERAL 31-01 PAD

NE1/4 NE1/4 SECTION 31 T6S R93W
6th PM GARFIELD COUNTY COLORADO