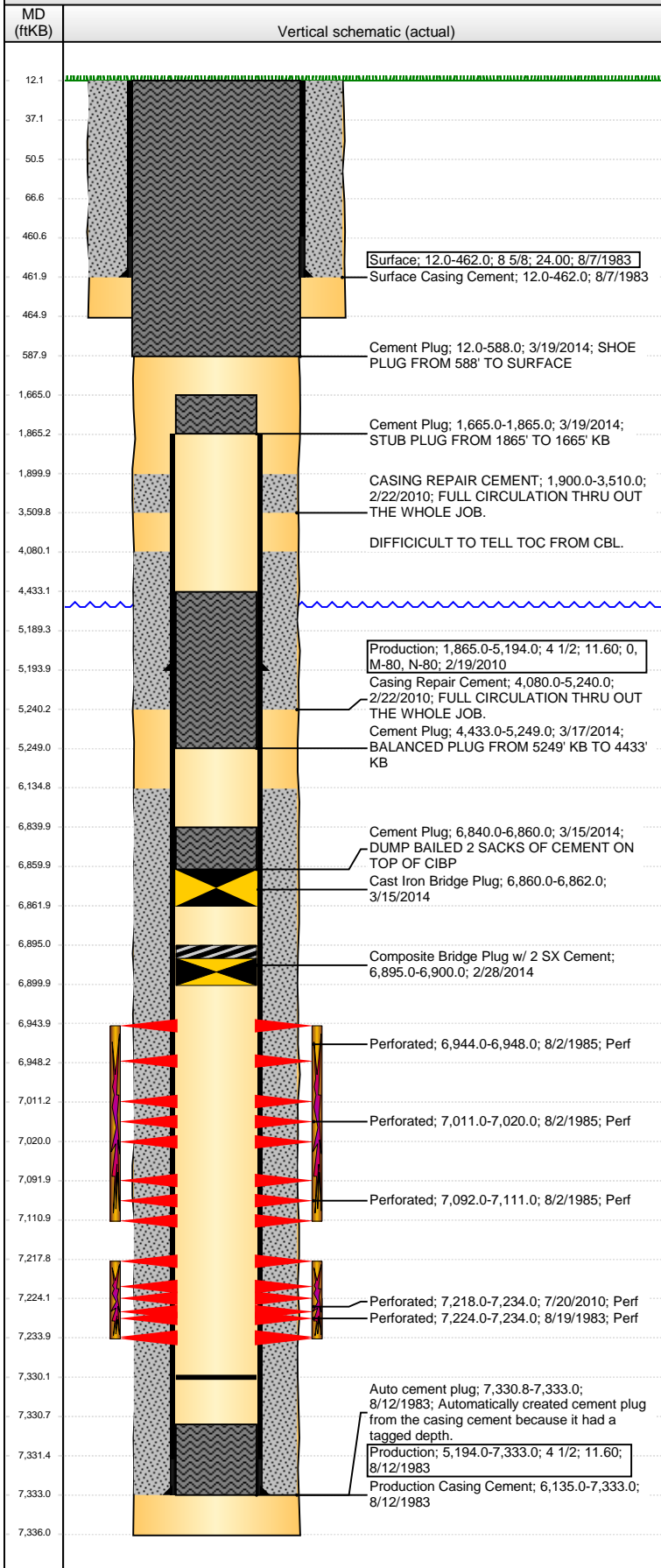


Well Name: MONFORT GILCREST K08-16

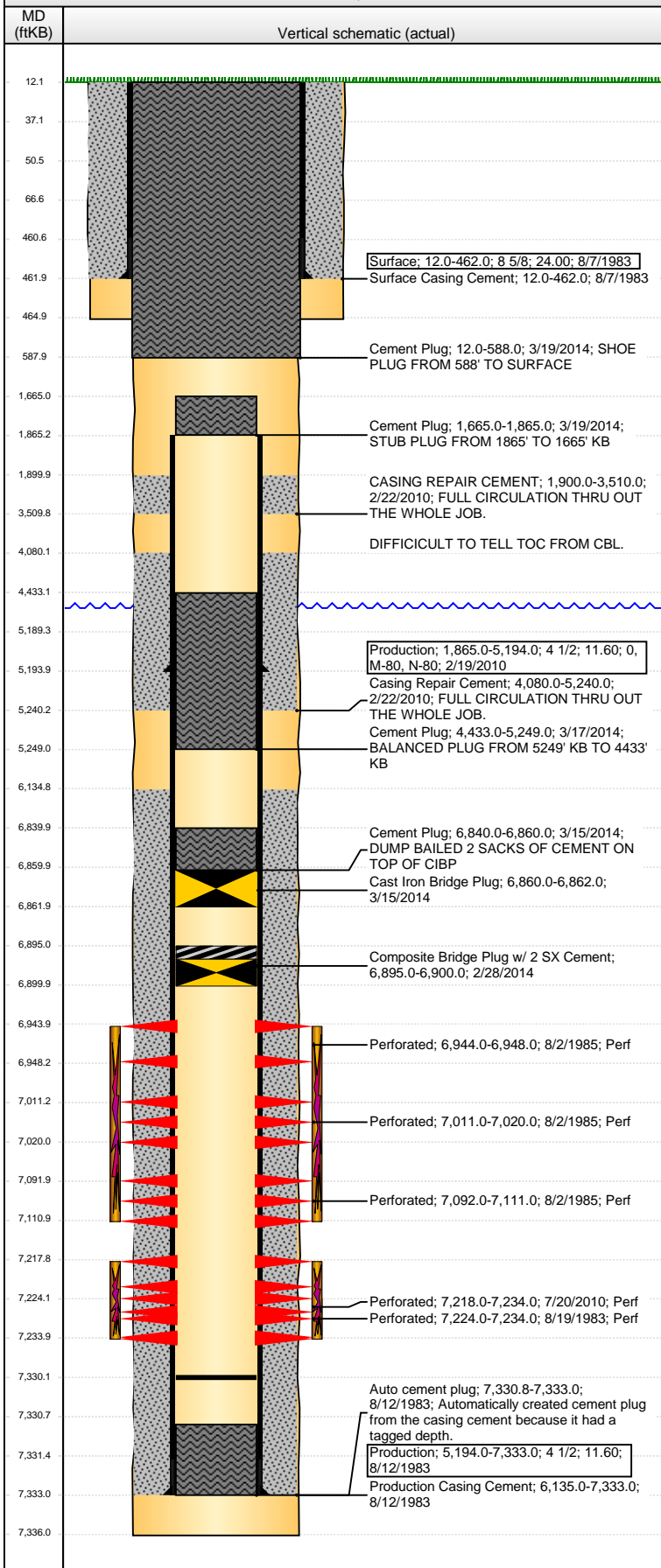
VERTICAL - ORIGINAL HOLE, 4/15/2014 12:26:12 PM



Well Header									
API 05-123-11291		Business Unit WATTENBERG			District 15		Well Config VERTICAL		
Original KB Elevation (ft) 4,714.00		KB - GL / MSL (ftKB) 12.00			Spud Date 8/6/1983		P & A Date 3/19/2014		
Comment									
Directions To Well CR 29/ CR 46 - N100' - WEST INTO.									
Congressional Location									
Quarter 1	Quarter 2	Quarter 3	Quarter 4	Section	Township	Twtnshp N...	Range	Rng E/W	Dir
		SE	SE	8	4	N	66	W	
Bottom Hole Location									
North-South Distance (ft)			From N or S Line		East-West Distance (ft)			From E or W Line	
Plug Back Total Depths									
Date	Depth (ftKB)	Method				Com			
8/12/1983	7,333.0	TAG				GUIDE SHOE			
2/22/2010	7,330.8	TAG				CLEAN OUT TO HARD TAG.			
4/19/2010	7,330.0	TAG				CLEAN OUT FILL TO HARD TAG.			
Wellbore Sections									
Section Des			Size (in)		Act Top, MD (ftKB)		Act Btm, MD (ftKB)		
SURFACE			12 1/4		12.0		465.0		
PRODUCTION			7 7/8		465.0		7,336.0		
Zone Statuses									
Zone Name		Status Date		Status		Job			
CODELL		9/5/1983		PR		DRILLING/COMPLETION - ORIGINAL, 8/6/1983 00:00			
CODELL		8/8/1985		PR		RECOMPLETION, 8/1/1985 00:00			
CODELL		2/10/2010		SI		CASING REPAIR, 2/8/2010 13:30			
CODELL		8/13/2010		PR		RE-FRAC, 7/19/2010 06:00			
CODELL		3/15/2014		P&A		ABANDON WELL, 3/15/2014 06:00			
NIOBRARA		8/8/1985		PR		RECOMPLETION, 8/1/1985 00:00			
NIOBRARA		3/15/2014		P&A		ABANDON WELL, 3/15/2014 06:00			
Casing Strings									
Surface, 462.0ftKB									
Casing Description		Run Date		OD (in)	Wt/Len (l...	Grade	Top, MD (ft...	MD (ftKB)	
Surface		8/7/1983		8 5/8	24.00		12.0	462.0	
Production, 5,194.0ftKB									
Casing Description		Run Date		OD (in)	Wt/Len (l...	Grade	Top, MD (ft...	MD (ftKB)	
Production		2/19/2010		4 1/2	11.60	M-80	12.0	5,194.0	
Production, 7,333.0ftKB									
Casing Description		Run Date		OD (in)	Wt/Len (l...	Grade	Top, MD (ft...	MD (ftKB)	
Production		8/12/1983		4 1/2	11.60		12.0	7,333.0	
Cement									
Description					Top Depth (ftKB)		Bottom Depth (ftKB)		
Surface Casing Cement					12.0		462.0		
Description					Top Depth (ftKB)		Bottom Depth (ftKB)		
Production Casing Cement					6,135.0		7,333.0		
Description					Top Depth (ftKB)		Bottom Depth (ftKB)		
CASING REPAIR CEMENT					1,900.0		3,510.0		
Description					Top Depth (ftKB)		Bottom Depth (ftKB)		
Casing Repair Cement					4,080.0		5,240.0		
Description					Top Depth (ftKB)		Bottom Depth (ftKB)		
Cement Plug					6,840.0		6,860.0		
Description					Top Depth (ftKB)		Bottom Depth (ftKB)		
Cement Plug					4,433.0		5,249.0		
Description					Top Depth (ftKB)		Bottom Depth (ftKB)		
Cement Plug					1,665.0		1,865.0		
Description					Top Depth (ftKB)		Bottom Depth (ftKB)		
Cement Plug					12.0		588.0		
Tubing Components									
Item Des		OD (in)	Wt (lb/ft)	Grade	Jts	Len (ft)	Btm (ftKB)	Btm (TVD) (ftKB)	
Perforation Data									
Zone		Bnch/St g	Entered Shot Total	Top (ftKB)		Btm (ftKB)		Date	
NIOBRARA, ORIGINAL HOLE		A	3	6,944.00		6,948.00		8/2/1985	
NIOBRARA, ORIGINAL HOLE		B	4	7,011.00		7,020.00		8/2/1985	
NIOBRARA, ORIGINAL HOLE		C	4	7,092.00		7,111.00		8/2/1985	

Well Name: MONFORT GILCREST K08-16

VERTICAL - ORIGINAL HOLE, 4/15/2014 12:26:14 PM



Perforation Data						
Zone		Bnch/St g	Entered Shot Total	Top (ftKB)	Btm (ftKB)	Date
CODELL, ORIGINAL HOLE			64	7,218.00	7,234.00	7/20/2010
CODELL, ORIGINAL HOLE			20	7,224.00	7,234.00	8/19/1983
Stimulations & Treatments						
Date		Zone		Primary Job Type		
9/3/1983		CODELL, ORIGINAL HOLE		DRILLING/COMPLETION - ORIGINAL		
Technical Result			Tech Result Details		Tech Result Note	
Comment						
Date		Zone		Primary Job Type		
8/3/1985		NIOBRARA, ORIGINAL HOLE		RECOMPLETION		
Technical Result			Tech Result Details		Tech Result Note	
Comment						
Date		Zone		Primary Job Type		
8/10/2010		CODELL, ORIGINAL HOLE		RE-FRAC		
Technical Result			Tech Result Details		Tech Result Note	
Success			According to Plan			
Comment						
CODELL REFRAC. TREATMENT WENT WELL. HAD TROUBLE MAINTAINING PROP CONCENTRATION DUE TO WET SAND AND WE LOST DENSITY DURING A GATE SWAP DUE TO WET SAND. AVG NOLTE +0.04.						
Other In Hole						
Run Date		Des		OD (in)	Top (ftKB)	Btm (ftKB)
2/28/2014		Composite Bridge Plug w/ 2 SX Cement		3.9	6,895.0	6,900.0
3/15/2014		Cast Iron Bridge Plug		3.99	6,860.0	6,862.0
Logs						
Date		Type		Top, MD (ftKB)		Btm, MD (ftKB)
8/12/1983		DENSITY NEUTRON		6,800.0		7,334.0
8/12/1983		DUAL INDUCTION		462.0		7,334.0
8/19/1983		CEMENT BOND		5,700.0		7,270.0
2/12/2010		CBL/CCL/GR		0.0		7,270.0
2/23/2010		CBL/CCL/GR		2,215.0		5,429.0
5/17/2013		GYRO		12.0		7,200.0
3/17/2014		CBL/CCL/GR		12.0		4,400.0