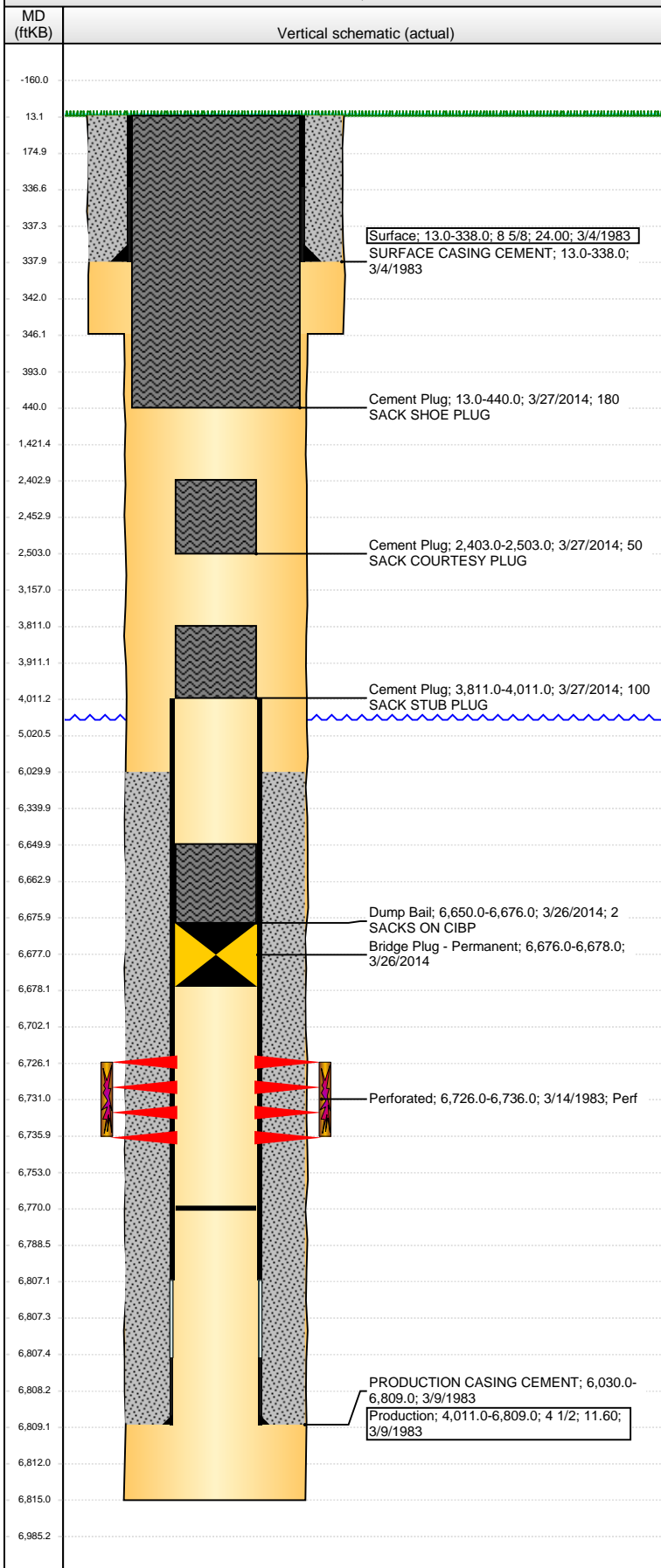


**Well Name: HOSHIKO 01**

VERTICAL - ORIGINAL HOLE, 4/10/2014 3:11:41 PM



Well Header			
API	Business Unit	District	Well Config
05-123-11071	WATTENBERG	15	VERTICAL
Original KB Elevation (ft)	KB - GL / MSL (ftKB)	Spud Date	P & A Date
4,626.00	13.00	3/4/1983	3/28/2014
Comment			
VERY LIMITED DATA IN WELL FILE. USED STATE REPORTS.			
Directions To Well			
Congressional Location			
Quarter 1	Quarter 2	Quarter 3	Quarter 4
		NE	SE
Section	Township	Twnshp N...	Range
35	5	N	64
Rng E/W Dir			
W			
Bottom Hole Location			
North-South Distance (ft)	From N or S Line	East-West Distance (ft)	From E or W Line
Plug Back Total Depths			
Date	Depth (ftKB)	Method	Com
3/9/1983	6,770.0	CASED HOLE LOG	
Wellbore Sections			
Section Des	Size (in)	Act Top, MD (ftKB)	Act Btm, MD (ftKB)
SURFACE	12 1/4	13.0	346.0
PRODUCTION	8 5/8	346.0	6,815.0
Zone Statuses			
Zone Name	Status Date	Status	Job
CODELL	3/29/1983	PR	DRILLING/COMPLETION - ORIGINAL, 3/4/1983 00:00
CODELL	3/26/2014	P&A	ABANDON WELL, 3/25/2014 06:00
Casing Strings			
Surface, 338.0ftKB			
Casing Description	Run Date	OD (in)	Wt/Len (L...)
Surface	3/4/1983	8 5/8	24.00
Grade	Top, MD (ft...)	MD (ftKB)	
	13.0	338.0	
Production, 6,809.0ftKB			
Casing Description	Run Date	OD (in)	Wt/Len (L...)
Production	3/9/1983	4 1/2	11.60
Grade	Top, MD (ft...)	MD (ftKB)	
	13.0	6,809.0	
Cement			
Description	Top Depth (ftKB)	Bottom Depth (ftKB)	
SURFACE CASING CEMENT	13.0	338.0	
Description	Top Depth (ftKB)	Bottom Depth (ftKB)	
PRODUCTION CASING CEMENT	6,030.0	6,809.0	
Description	Top Depth (ftKB)	Bottom Depth (ftKB)	
Dump Bail	6,650.0	6,676.0	
Description	Top Depth (ftKB)	Bottom Depth (ftKB)	
Cement Plug	3,811.0	4,011.0	
Description	Top Depth (ftKB)	Bottom Depth (ftKB)	
Cement Plug	2,403.0	2,503.0	
Description	Top Depth (ftKB)	Bottom Depth (ftKB)	
Cement Plug	13.0	440.0	
Tubing Components			
Item Des	OD (in)	Wt (lb/ft)	Grade
Jts	Len (ft)	Btm (ftKB)	Btm (TVD) (ftKB)
Perforation Data			
Zone	Bnch/St g	Entered Shot Total	Top (ftKB)
CODELL, ORIGINAL HOLE		30	6,726.00
Btm (ftKB)	Date		
6,736.00	3/14/1983		
Stimulations & Treatments			
Date	Zone	Primary Job Type	
3/18/1983	CODELL, ORIGINAL HOLE	DRILLING/COMPLETION - ORIGINAL	
Technical Result	Tech Result Details		Tech Result Note
Comment			
Other In Hole			
Run Date	Des	OD (in)	Top (ftKB)
3/26/2014	Bridge Plug - Permanent	3.99	6,676.0
Btm (ftKB)			
6,678.0			
Logs			
Date	Type	Top, MD (ftKB)	Btm, MD (ftKB)