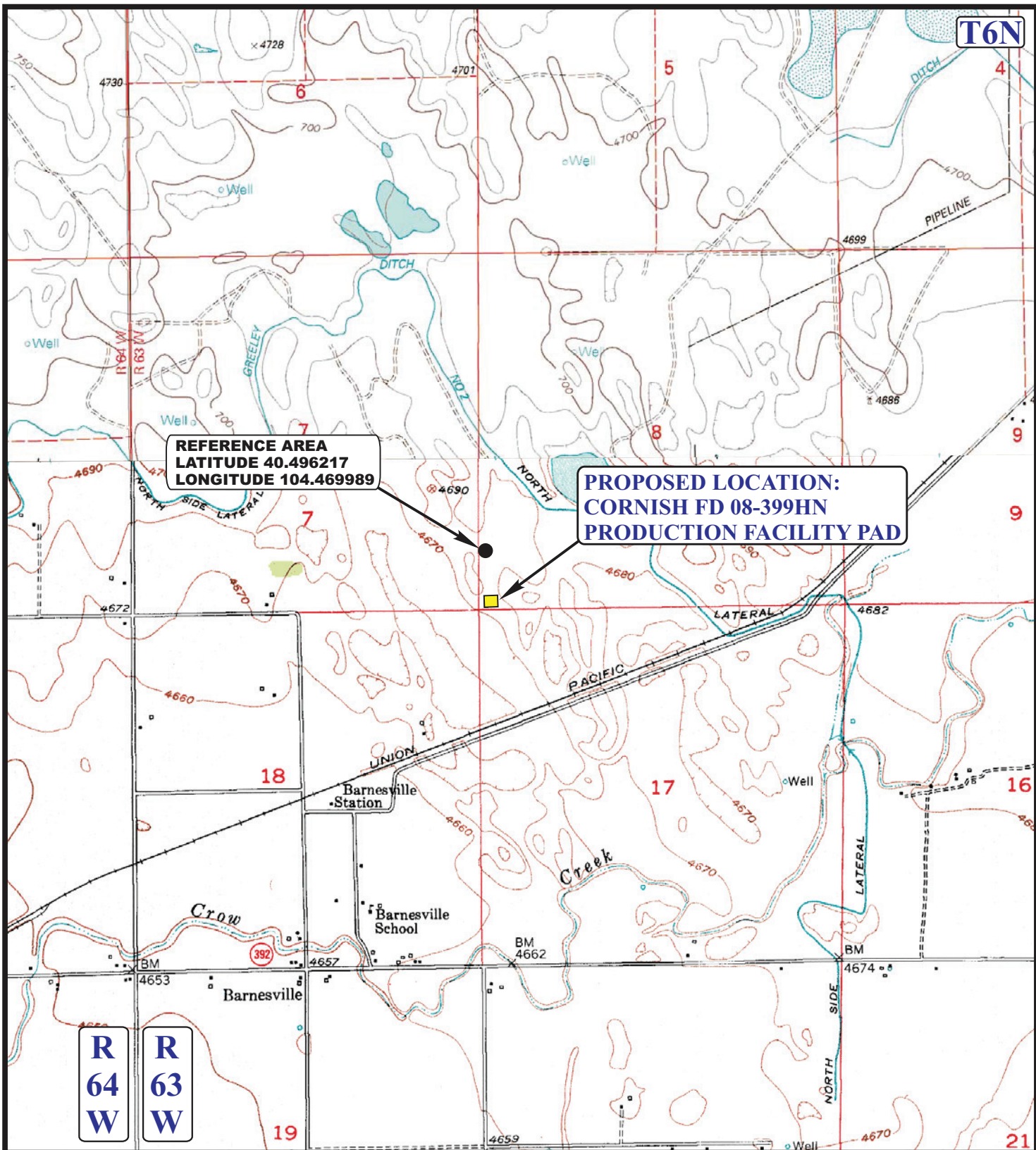


T6N



REFERENCE AREA
LATITUDE 40.496217
LONGITUDE 104.469989

PROPOSED LOCATION:
CORNISH FD 08-399HN
PRODUCTION FACILITY PAD

R
64
W

R
63
W

LEGEND:

GREAT WESTERN OIL & GAS COMPANY

CORNISH FD 08-399HN PRODUCTION FACILITY PAD
SECTION 8, T6N, R63W, 6th P.M.
127' FSL 201' FWL



Uintah Engineering & Land Surveying
 85 South 200 East Vernal, Utah 84078
 (435) 789-1017 * FAX (435) 789-1813

REFERENCE AREA	01	30	13	REF
MAP	MONTH	DAY	YEAR	
SCALE: 1" = 2000'	DRAWN BY: A.T.		REV:03-20-14J.L.G.	TOPO