

**LEGEND:**

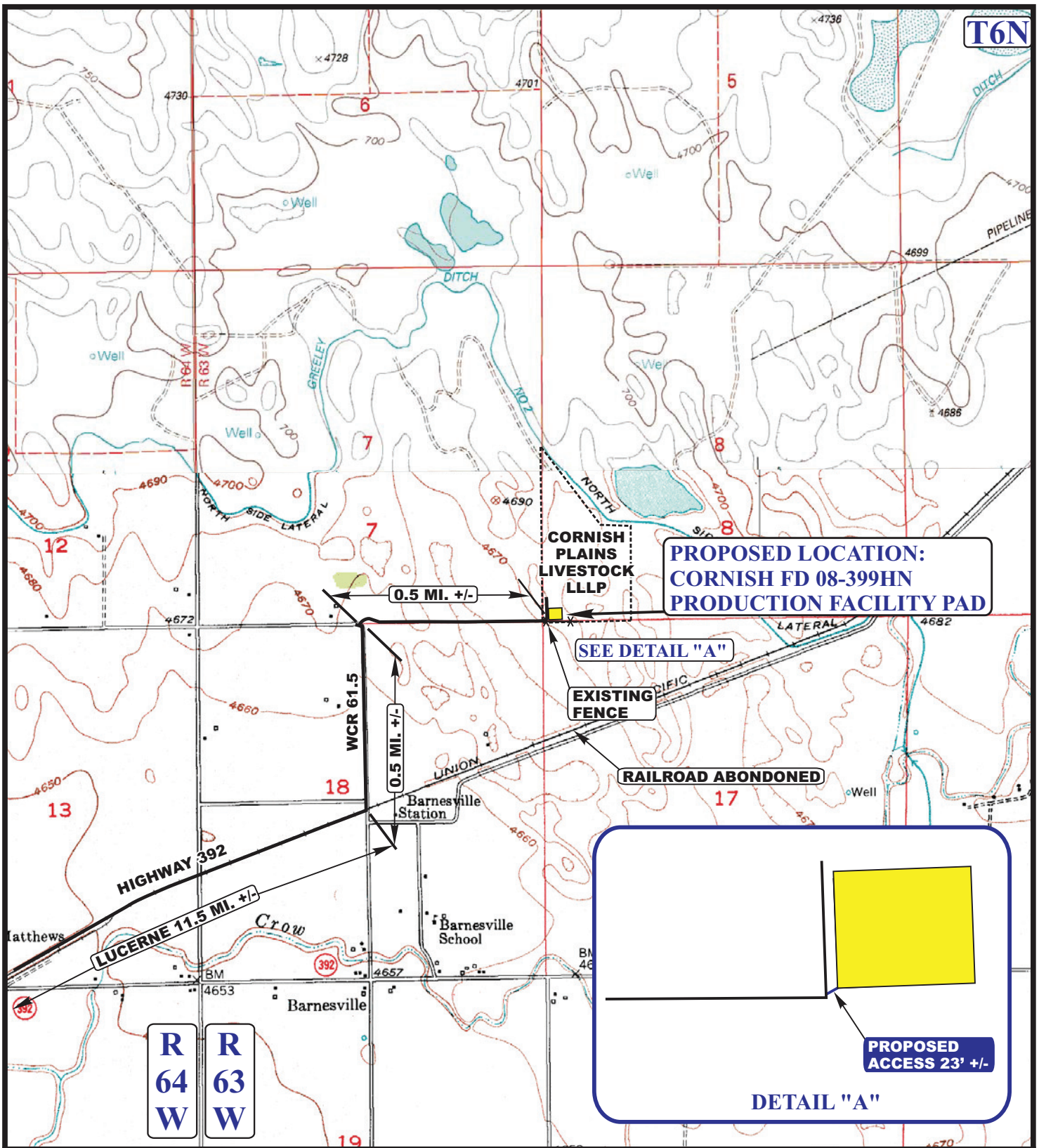
 PROPOSED LOCATION



**GREAT WESTERN OIL & GAS COMPANY**  
**CORNISH FD 08-399HN PRODUCTION FACILITY PAD**  
 SECTION 8, T6N, R63W, 6th P.M.  
 127' FSL 201' FWL

	<b>Uintah Engineering &amp; Land Surveying</b> 85 South 200 East Vernal, Utah 84078 (435) 789-1017 * FAX (435) 789-1813
---	---

<b>ACCESS ROAD</b> <b>MAP</b>	<b>01</b> <small>MONTH</small>	<b>30</b> <small>DAY</small>	<b>13</b> <small>YEAR</small>	
	<small>SCALE: 1:100,000</small>	<small>DRAWN BY: A.T.</small>	<small>REV:03-20-14J.L.G.</small>	

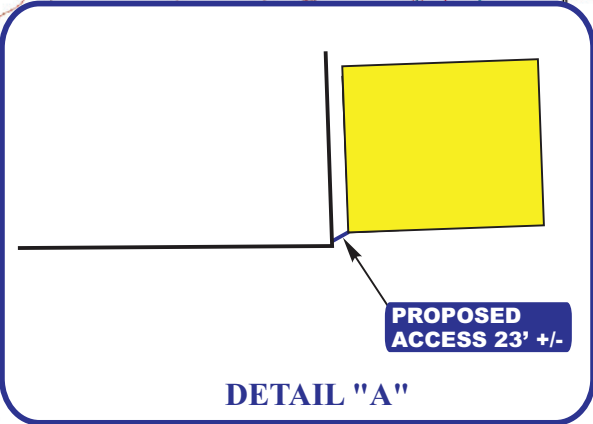


**PROPOSED LOCATION:  
CORNISH FD 08-399HN  
PRODUCTION FACILITY PAD**

**SEE DETAIL "A"**

**EXISTING FENCE**

**RAILROAD ABANDONED**



**PROPOSED ACCESS 23' +/-**

**DETAIL "A"**

**LEGEND:**

- EXISTING ROAD
- PROPOSED ACCESS ROAD
- EXISTING FENCE



**GREAT WESTERN OIL & GAS COMPANY**

**CORNISH FD 08-399HN PRODUCTION FACILITY PAD  
SECTION 8, T6N, R63W, 6th P.M.  
127' FSL 201' FWL**



**Utah Engineering & Land Surveying**  
85 South 200 East Vernal, Utah 84078  
(435) 789-1017 \* FAX (435) 789-1813

<b>ACCESS ROAD MAP</b>	<b>01</b>	<b>30</b>	<b>13</b>	<b>B TOPO</b>
	MONTH	DAY	YEAR	
SCALE: 1" = 2000'	DRAWN BY: A.T.		REV: 03-20-14J.L.G.	