



# **KP Kauffman Co, Inc.**

**Weld County, CO**

**A.M.Sprague**

**A.M.Sprague A-1**

**OH**

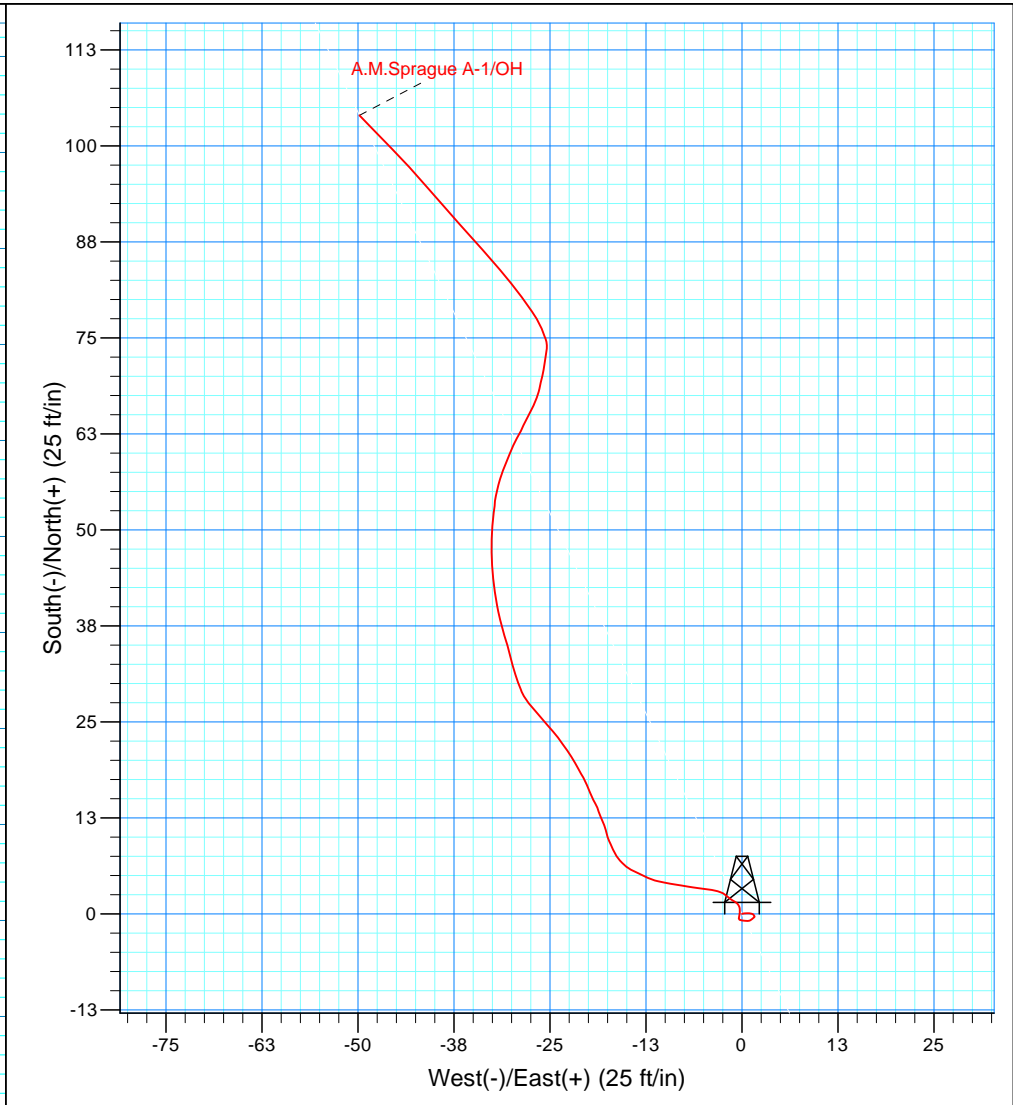
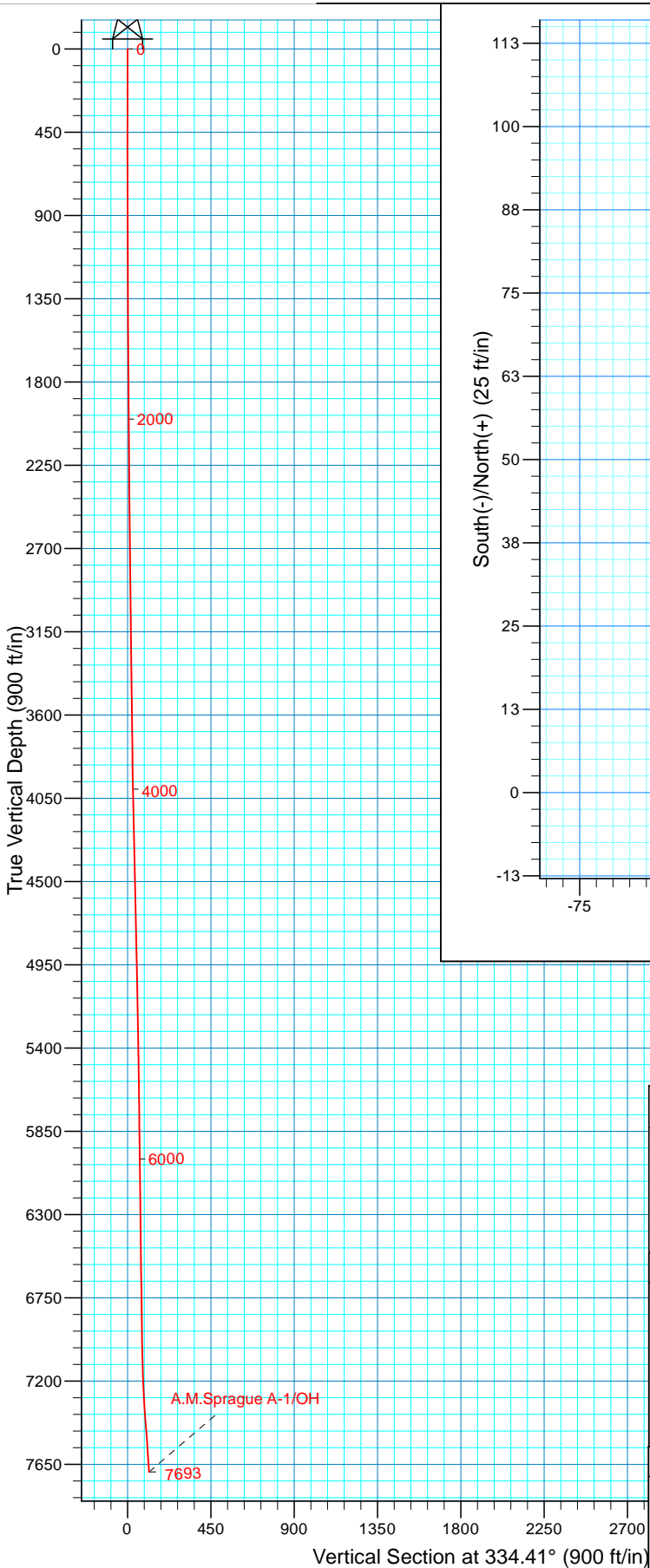
**Design: OH**

## **Standard Survey Report**

**05 March, 2014**



Project: Weld County, CO  
 Site: A.M.Sprague  
 Well: A.M.Sprague A-1  
 Wellbore: OH  
 Design: OH



WELL DETAILS: A.M.Sprague A-1			
Ground Level:	5000.00		
Northing	Easting	Latitude	Longitude
1289373.44	3203989.97	40° 7' 31.512 N	104° 46' 13.850 W
REFERENCE INFORMATION			
Co-ordinate (N/E) Reference: Well A.M.Sprague A-1, True North			
Vertical (TVD) Reference: GL 5000 @ 5000.00ft (Ground Level)			
Section (VS) Reference: Slot - (0.00N, 0.00E)			
Measured Depth Reference: GL 5000 @ 5000.00ft (Ground Level)			
Calculation Method: Minimum Curvature			
Local North: True			
Location:			
PROJECT DETAILS: Weld County, CO		Design: OH (A.M.Sprague A-1/OH)	
Geodetic System: US State Plane 1983		Created By: Steve Gottschalk	
Datum: North American Datum 1983		10:24, March 05 2014	
Ellipsoid: GRS 1980			
Zone: Colorado Northern Zone			

# Scientific Drilling International

## Survey Report

<b>Company:</b> KP Kauffman Co, Inc.	<b>Local Co-ordinate Reference:</b> Well A.M.Sprague A-1
<b>Project:</b> Weld County, CO	<b>TVD Reference:</b> GL 5000 @ 5000.00ft (Ground Level)
<b>Site:</b> A.M.Sprague	<b>MD Reference:</b> GL 5000 @ 5000.00ft (Ground Level)
<b>Well:</b> A.M.Sprague A-1	<b>North Reference:</b> True
<b>Wellbore:</b> OH	<b>Survey Calculation Method:</b> Minimum Curvature
<b>Design:</b> OH	<b>Database:</b> Casper District

<b>Project</b> Weld County, CO		
<b>Map System:</b> US State Plane 1983	<b>System Datum:</b>	Mean Sea Level
<b>Geo Datum:</b> North American Datum 1983		
<b>Map Zone:</b> Colorado Northern Zone		

<b>Site</b> A.M.Sprague		
<b>Site Position:</b>	<b>Northing:</b> 1,289,373.44 usft	<b>Latitude:</b> 40° 7' 31.512 N
<b>From:</b> Lat/Long	<b>Easting:</b> 3,203,989.97 usft	<b>Longitude:</b> 104° 46' 13.850 W
<b>Position Uncertainty:</b> 0.00 ft	<b>Slot Radius:</b> 13.200 in	<b>Grid Convergence:</b> 0.47 °

<b>Well</b> A.M.Sprague A-1, 1980' FNL, 660' FWL, SEC22 T2N R66W					
<b>Well Position</b>	<b>+N/-S</b> 0.00 ft	<b>Northing:</b> 1,289,373.44 usft	<b>Latitude:</b> 40° 7' 31.512 N		
	<b>+E/-W</b> 0.00 ft	<b>Easting:</b> 3,203,989.97 usft	<b>Longitude:</b> 104° 46' 13.850 W		
<b>Position Uncertainty</b>	0.00 ft	<b>Wellhead Elevation:</b> 0.00 ft	<b>Ground Level:</b> 5,000.00 ft		

<b>Wellbore</b> OH					
Magnetics	Model Name	Sample Date	Declination (°)	Dip Angle (°)	Field Strength (nT)
	BGGM2013	2/11/2014	8.53	66.72	52,625

<b>Design</b> OH				
<b>Audit Notes:</b>				
<b>Version:</b> 1.0	<b>Phase:</b> ACTUAL	<b>Tie On Depth:</b>	0.00	
Vertical Section:	Depth From (TVD) (ft)	+N/-S (ft)	+E/-W (ft)	Direction (°)
	0.00	0.00	0.00	334.41

<b>Survey Program</b> Date 3/5/2014				
From (ft)	To (ft)	Survey (Wellbore)	Tool Name	Description
49.78	7,692.64	Survey #1 Surface Gyros (OH)	SDI Standard Keeper 103	SDI Standard Wireline Keeper ver 1.0.3

Measured Depth (ft)	Inclination (°)	Azimuth (°)	Vertical Depth (ft)	+N/-S (ft)	+E/-W (ft)	Vertical Section (ft)	Dogleg Rate (°/100ft)	Build Rate (°/100ft)	Turn Rate (°/100ft)	
0.00	0.00	0.00	0.00	0.00	0.00	0.00	0.00	0.00	0.00	
49.78	0.60	78.81	49.78	0.05	0.26	-0.06	1.21	1.21	0.00	
<b>First SDI Gyro Survey</b>										
100.81	0.29	100.40	100.81	0.08	0.64	-0.21	0.68	-0.61	42.31	
150.72	0.43	88.35	150.72	0.06	0.96	-0.36	0.32	0.28	-24.14	
200.94	0.31	110.14	200.94	0.02	1.27	-0.53	0.36	-0.24	43.39	
250.99	0.23	124.21	250.98	-0.08	1.48	-0.71	0.21	-0.16	28.11	
301.10	0.23	151.15	301.09	-0.23	1.61	-0.90	0.21	0.00	53.76	
350.51	0.09	176.70	350.50	-0.35	1.66	-1.04	0.31	-0.28	51.71	
400.07	0.17	225.96	400.06	-0.44	1.61	-1.10	0.26	0.16	99.39	
450.91	0.21	231.53	450.90	-0.55	1.49	-1.14	0.09	0.08	10.96	

# Scientific Drilling International

## Survey Report

<b>Company:</b>	KP Kauffman Co, Inc.	<b>Local Co-ordinate Reference:</b>	Well A.M.Sprague A-1
<b>Project:</b>	Weld County, CO	<b>TVD Reference:</b>	GL 5000 @ 5000.00ft (Ground Level)
<b>Site:</b>	A.M.Sprague	<b>MD Reference:</b>	GL 5000 @ 5000.00ft (Ground Level)
<b>Well:</b>	A.M.Sprague A-1	<b>North Reference:</b>	True
<b>Wellbore:</b>	OH	<b>Survey Calculation Method:</b>	Minimum Curvature
<b>Design:</b>	OH	<b>Database:</b>	Casper District

Survey										
Measured Depth (ft)	Inclination (°)	Azimuth (°)	Vertical Depth (ft)	+N/-S (ft)	+E/-W (ft)	Vertical Section (ft)	Dogleg Rate (°/100ft)	Build Rate (°/100ft)	Turn Rate (°/100ft)	
500.46	0.22	231.13	500.45	-0.67	1.34	-1.18	0.02	0.02	-0.81	
550.74	0.20	239.49	550.73	-0.77	1.19	-1.21	0.07	-0.04	16.63	
601.04	0.26	243.87	601.03	-0.87	1.01	-1.22	0.12	0.12	8.71	
650.25	0.36	269.62	650.24	-0.92	0.76	-1.16	0.34	0.20	52.33	
700.44	0.42	278.23	700.43	-0.89	0.42	-0.99	0.17	0.12	17.15	
750.41	0.50	273.20	750.40	-0.86	0.02	-0.78	0.18	0.16	-10.07	
800.83	0.28	305.14	800.82	-0.77	-0.30	-0.57	0.60	-0.44	63.35	
850.85	0.26	1.44	850.84	-0.59	-0.40	-0.36	0.51	-0.04	112.55	
900.84	0.27	11.78	900.83	-0.36	-0.37	-0.16	0.10	0.02	20.68	
950.46	0.31	14.74	950.45	-0.12	-0.31	0.03	0.09	0.08	5.97	
1,000.78	0.28	4.47	1,000.77	0.14	-0.27	0.24	0.12	-0.06	-20.41	
1,050.42	0.30	357.48	1,050.41	0.39	-0.27	0.47	0.08	0.04	-14.08	
1,100.42	0.29	0.01	1,100.40	0.65	-0.27	0.70	0.03	-0.02	5.06	
1,151.33	0.26	339.79	1,151.31	0.88	-0.31	0.93	0.20	-0.06	-39.72	
1,200.76	0.29	330.47	1,200.74	1.10	-0.41	1.17	0.11	0.06	-18.85	
1,250.94	0.30	308.95	1,250.92	1.29	-0.58	1.41	0.22	0.02	-42.89	
1,300.52	0.26	315.80	1,300.50	1.45	-0.76	1.64	0.11	-0.08	13.82	
1,350.80	0.31	298.41	1,350.78	1.60	-0.96	1.86	0.20	0.10	-34.59	
1,400.46	0.27	298.36	1,400.44	1.72	-1.18	2.06	0.08	-0.08	-0.10	
1,450.06	0.36	306.93	1,450.04	1.87	-1.40	2.29	0.20	0.18	17.28	
1,500.78	0.34	313.88	1,500.76	2.07	-1.64	2.57	0.09	-0.04	13.70	
1,551.03	0.38	303.82	1,551.01	2.26	-1.89	2.86	0.15	0.08	-20.02	
1,600.47	0.43	306.78	1,600.45	2.47	-2.17	3.16	0.11	0.10	5.99	
1,650.57	0.41	300.97	1,650.55	2.67	-2.47	3.48	0.09	-0.04	-11.60	
1,700.11	0.45	291.98	1,700.08	2.84	-2.81	3.77	0.16	0.08	-18.15	
1,750.10	0.42	285.73	1,750.07	2.96	-3.17	4.04	0.11	-0.06	-12.50	
1,800.07	0.47	281.71	1,800.04	3.05	-3.54	4.28	0.12	0.10	-8.04	
1,850.36	0.54	275.08	1,850.33	3.11	-3.98	4.53	0.18	0.14	-13.18	
1,900.36	0.64	279.13	1,900.33	3.18	-4.49	4.81	0.22	0.20	8.10	
1,950.83	0.67	280.58	1,950.79	3.28	-5.06	5.14	0.07	0.06	2.87	
2,000.88	0.81	275.99	2,000.84	3.37	-5.70	5.50	0.30	0.28	-9.17	
2,050.57	0.78	277.76	2,050.52	3.45	-6.38	5.87	0.08	-0.06	3.56	
2,100.69	0.82	279.09	2,100.64	3.55	-7.08	6.26	0.09	0.08	2.65	
2,150.70	0.87	279.28	2,150.64	3.67	-7.80	6.68	0.10	0.10	0.38	
2,200.78	0.98	277.48	2,200.72	3.79	-8.60	7.13	0.23	0.22	-3.59	
2,250.49	0.84	282.34	2,250.42	3.92	-9.38	7.59	0.32	-0.28	9.78	
2,300.95	0.90	281.61	2,300.88	4.08	-10.13	8.05	0.12	0.12	-1.45	
2,350.64	0.90	284.51	2,350.56	4.26	-10.89	8.54	0.09	0.00	5.84	
2,400.66	0.90	283.71	2,400.57	4.45	-11.65	9.04	0.03	0.00	-1.60	
2,450.78	0.83	298.44	2,450.69	4.71	-12.35	9.59	0.46	-0.14	29.39	
2,500.02	0.92	297.74	2,499.92	5.07	-13.02	10.19	0.18	0.18	-1.42	
2,551.23	0.89	291.96	2,551.13	5.41	-13.75	10.82	0.19	-0.06	-11.29	
2,600.30	0.89	299.68	2,600.19	5.74	-14.43	11.41	0.24	0.00	15.73	

# Scientific Drilling International

## Survey Report

<b>Company:</b>	KP Kauffman Co, Inc.	<b>Local Co-ordinate Reference:</b>	Well A.M.Sprague A-1
<b>Project:</b>	Weld County, CO	<b>TVD Reference:</b>	GL 5000 @ 5000.00ft (Ground Level)
<b>Site:</b>	A.M.Sprague	<b>MD Reference:</b>	GL 5000 @ 5000.00ft (Ground Level)
<b>Well:</b>	A.M.Sprague A-1	<b>North Reference:</b>	True
<b>Wellbore:</b>	OH	<b>Survey Calculation Method:</b>	Minimum Curvature
<b>Design:</b>	OH	<b>Database:</b>	Casper District

Survey										
Measured Depth (ft)	Inclination (°)	Azimuth (°)	Vertical Depth (ft)	+N/-S (ft)	+E/-W (ft)	Vertical Section (ft)	Dogleg Rate (°/100ft)	Build Rate (°/100ft)	Turn Rate (°/100ft)	
2,650.51	0.81	307.99	2,650.39	6.15	-15.05	12.05	0.29	-0.16	16.55	
2,700.38	0.81	316.38	2,700.26	6.62	-15.57	12.70	0.24	0.00	16.82	
2,751.00	0.87	319.28	2,750.87	7.17	-16.07	13.41	0.15	0.12	5.73	
2,800.18	0.66	331.25	2,800.05	7.70	-16.45	14.05	0.53	-0.43	24.34	
2,850.78	0.61	335.42	2,850.65	8.20	-16.70	14.61	0.13	-0.10	8.24	
2,900.40	0.61	336.68	2,900.26	8.69	-16.92	15.14	0.03	0.00	2.54	
2,950.04	0.50	335.26	2,949.90	9.13	-17.11	15.62	0.22	-0.22	-2.86	
3,000.32	0.50	332.76	3,000.18	9.52	-17.31	16.06	0.04	0.00	-4.97	
3,051.00	0.65	343.10	3,050.86	9.99	-17.49	16.57	0.36	0.30	20.40	
3,100.28	0.49	346.66	3,100.13	10.46	-17.62	17.05	0.33	-0.32	7.22	
3,150.30	0.68	345.88	3,150.15	10.96	-17.74	17.55	0.38	0.38	-1.56	
3,200.44	0.56	341.13	3,200.29	11.48	-17.89	18.08	0.26	-0.24	-9.47	
3,250.17	0.60	333.83	3,250.02	11.94	-18.09	18.59	0.17	0.08	-14.68	
3,300.33	0.49	338.14	3,300.17	12.38	-18.28	19.06	0.23	-0.22	8.59	
3,350.95	0.61	340.15	3,350.79	12.83	-18.45	19.55	0.24	0.24	3.97	
3,400.15	0.58	337.15	3,399.99	13.31	-18.64	20.06	0.09	-0.06	-6.10	
3,450.96	0.66	344.08	3,450.80	13.83	-18.82	20.60	0.22	0.16	13.64	
3,500.78	0.78	326.24	3,500.61	14.39	-19.09	21.22	0.51	0.24	-35.81	
3,550.45	0.72	337.85	3,550.28	14.96	-19.39	21.87	0.33	-0.12	23.37	
3,600.24	0.86	335.79	3,600.06	15.59	-19.66	22.55	0.29	0.28	-4.14	
3,650.79	0.77	335.65	3,650.61	16.24	-19.96	23.27	0.18	-0.18	-0.28	
3,700.37	0.88	337.61	3,700.18	16.90	-20.24	23.98	0.23	0.22	3.95	
3,750.20	0.79	330.87	3,750.01	17.55	-20.56	24.71	0.27	-0.18	-13.53	
3,800.86	0.92	329.92	3,800.66	18.21	-20.93	25.46	0.26	0.26	-1.88	
3,850.43	0.89	334.47	3,850.23	18.90	-21.29	26.24	0.16	-0.06	9.18	
3,900.04	1.08	326.36	3,899.83	19.64	-21.72	27.09	0.47	0.38	-16.35	
3,950.46	1.12	330.84	3,950.24	20.46	-22.22	28.05	0.19	0.08	8.89	
4,000.05	1.09	324.57	3,999.82	21.27	-22.73	29.00	0.25	-0.06	-12.64	
4,050.32	1.23	323.36	4,050.08	22.09	-23.33	30.00	0.28	0.28	-2.41	
4,100.20	1.20	325.67	4,099.95	22.95	-23.95	31.05	0.12	-0.06	4.63	
4,150.04	1.24	316.81	4,149.78	23.78	-24.61	32.08	0.39	0.08	-17.78	
4,200.33	1.36	318.29	4,200.05	24.62	-25.38	33.17	0.25	0.24	2.94	
4,250.67	1.30	321.24	4,250.38	25.51	-26.13	34.30	0.18	-0.12	5.86	
4,301.08	1.30	318.69	4,300.78	26.39	-26.87	35.40	0.11	0.00	-5.06	
4,350.34	1.39	319.47	4,350.02	27.26	-27.63	36.52	0.19	0.18	1.58	
4,401.11	1.31	329.97	4,400.78	28.23	-28.32	37.69	0.51	-0.16	20.68	
4,450.15	1.18	338.73	4,449.81	29.19	-28.78	38.76	0.47	-0.27	17.86	
4,500.34	1.17	340.02	4,499.99	30.15	-29.14	39.78	0.06	-0.02	2.57	
4,550.53	1.23	340.96	4,550.17	31.14	-29.49	40.83	0.13	0.12	1.87	
4,601.13	1.21	345.38	4,600.76	32.17	-29.81	41.89	0.19	-0.04	8.74	
4,650.51	1.21	345.66	4,650.12	33.18	-30.07	42.91	0.01	0.00	0.57	
4,700.00	1.17	347.37	4,699.60	34.18	-30.31	43.92	0.11	-0.08	3.46	
4,750.34	1.25	338.83	4,749.93	35.19	-30.62	44.97	0.39	0.16	-16.96	

# Scientific Drilling International

## Survey Report

<b>Company:</b>	KP Kauffman Co, Inc.	<b>Local Co-ordinate Reference:</b>	Well A.M.Sprague A-1
<b>Project:</b>	Weld County, CO	<b>TVD Reference:</b>	GL 5000 @ 5000.00ft (Ground Level)
<b>Site:</b>	A.M.Sprague	<b>MD Reference:</b>	GL 5000 @ 5000.00ft (Ground Level)
<b>Well:</b>	A.M.Sprague A-1	<b>North Reference:</b>	True
<b>Wellbore:</b>	OH	<b>Survey Calculation Method:</b>	Minimum Curvature
<b>Design:</b>	OH	<b>Database:</b>	Casper District

Survey										
Measured Depth (ft)	Inclination (°)	Azimuth (°)	Vertical Depth (ft)	+N/-S (ft)	+E/-W (ft)	Vertical Section (ft)	Dogleg Rate (°/100ft)	Build Rate (°/100ft)	Turn Rate (°/100ft)	
4,800.05	1.26	347.96	4,799.63	36.23	-30.93	46.04	0.40	0.02	18.37	
4,851.00	1.21	342.02	4,850.57	37.29	-31.21	47.12	0.27	-0.10	-11.66	
4,901.19	1.21	347.80	4,900.75	38.32	-31.49	48.16	0.24	0.00	11.52	
4,950.99	1.17	346.11	4,950.54	39.32	-31.72	49.17	0.11	-0.08	-3.39	
5,000.85	1.20	352.11	5,000.39	40.33	-31.91	50.16	0.26	0.06	12.03	
5,050.58	1.25	349.83	5,050.10	41.38	-32.08	51.18	0.14	0.10	-4.58	
5,100.89	1.23	352.28	5,100.40	42.46	-32.25	52.22	0.11	-0.04	4.87	
5,150.88	1.22	354.75	5,150.38	43.52	-32.37	53.23	0.11	-0.02	4.94	
5,201.25	1.18	353.66	5,200.74	44.57	-32.48	54.23	0.09	-0.08	-2.16	
5,250.02	1.19	359.20	5,249.50	45.58	-32.54	55.16	0.24	0.02	11.36	
5,300.02	1.08	357.35	5,299.49	46.57	-32.57	56.07	0.23	-0.22	-3.70	
5,350.99	1.02	358.96	5,350.45	47.50	-32.60	56.92	0.13	-0.12	3.16	
5,400.93	1.02	1.84	5,400.38	48.39	-32.59	57.72	0.10	0.00	5.77	
5,450.42	1.07	4.07	5,449.87	49.29	-32.55	58.51	0.13	0.10	4.51	
5,501.26	1.00	0.42	5,500.70	50.21	-32.51	59.32	0.19	-0.14	-7.18	
5,550.53	0.93	8.52	5,549.96	51.03	-32.45	60.04	0.31	-0.14	16.44	
5,600.98	0.82	4.71	5,600.40	51.80	-32.36	60.69	0.25	-0.22	-7.55	
5,650.36	0.78	9.59	5,649.78	52.48	-32.27	61.27	0.16	-0.08	9.88	
5,700.08	0.72	2.02	5,699.50	53.13	-32.20	61.82	0.23	-0.12	-15.23	
5,750.01	0.76	7.73	5,749.42	53.77	-32.15	62.38	0.17	0.08	11.44	
5,801.04	0.81	12.43	5,800.45	54.45	-32.02	62.95	0.16	0.10	9.21	
5,850.89	0.89	11.90	5,850.29	55.18	-31.87	63.53	0.16	0.16	-1.06	
5,900.64	0.82	14.19	5,900.04	55.90	-31.70	64.11	0.16	-0.14	4.60	
5,950.77	0.89	17.91	5,950.16	56.62	-31.49	64.67	0.18	0.14	7.42	
6,000.80	1.03	19.82	6,000.18	57.41	-31.22	65.27	0.29	0.28	3.82	
6,050.89	1.01	22.21	6,050.27	58.24	-30.90	65.88	0.09	-0.04	4.77	
6,100.04	1.06	21.21	6,099.41	59.07	-30.57	66.48	0.11	0.10	-2.03	
6,150.72	1.21	23.36	6,150.08	60.00	-30.19	67.15	0.31	0.30	4.24	
6,200.74	1.23	24.85	6,200.09	60.97	-29.76	67.84	0.07	0.04	2.98	
6,250.62	1.21	27.17	6,249.95	61.92	-29.29	68.50	0.11	-0.04	4.65	
6,300.69	1.27	29.04	6,300.01	62.88	-28.78	69.14	0.14	0.12	3.73	
6,350.95	1.30	23.32	6,350.26	63.89	-28.29	69.84	0.26	0.06	-11.38	
6,400.35	1.08	27.48	6,399.65	64.82	-27.85	70.49	0.48	-0.45	8.42	
6,450.03	1.24	29.72	6,449.32	65.70	-27.37	71.08	0.33	0.32	4.51	
6,500.98	1.11	19.09	6,500.26	66.64	-26.93	71.74	0.50	-0.26	-20.86	
6,550.97	1.09	19.90	6,550.24	67.55	-26.61	72.42	0.05	-0.04	1.62	
6,600.80	0.88	12.55	6,600.06	68.37	-26.37	73.05	0.49	-0.42	-14.75	
6,650.12	1.04	11.62	6,649.38	69.18	-26.19	73.71	0.33	0.32	-1.89	
6,700.45	0.96	14.60	6,699.70	70.03	-26.00	74.39	0.19	-0.16	5.92	
6,750.85	0.95	10.12	6,750.09	70.85	-25.82	75.05	0.15	-0.02	-8.89	
6,800.98	0.88	7.36	6,800.21	71.64	-25.69	75.71	0.16	-0.14	-5.51	
6,850.08	0.87	9.11	6,849.31	72.38	-25.59	76.34	0.06	-0.02	3.56	
6,900.43	0.66	10.70	6,899.65	73.05	-25.47	76.88	0.42	-0.42	3.16	
6,950.52	0.71	5.59	6,949.74	73.64	-25.39	77.38	0.16	0.10	-10.20	

# Scientific Drilling International

## Survey Report

<b>Company:</b> KP Kauffman Co, Inc.	<b>Local Co-ordinate Reference:</b> Well A.M.Sprague A-1
<b>Project:</b> Weld County, CO	<b>TVD Reference:</b> GL 5000 @ 5000.00ft (Ground Level)
<b>Site:</b> A.M.Sprague	<b>MD Reference:</b> GL 5000 @ 5000.00ft (Ground Level)
<b>Well:</b> A.M.Sprague A-1	<b>North Reference:</b> True
<b>Wellbore:</b> OH	<b>Survey Calculation Method:</b> Minimum Curvature
<b>Design:</b> OH	<b>Database:</b> Casper District

Survey									
Measured Depth (ft)	Inclination (°)	Azimuth (°)	Vertical Depth (ft)	+N/-S (ft)	+E/-W (ft)	Vertical Section (ft)	Dogleg Rate (°/100ft)	Build Rate (°/100ft)	Turn Rate (°/100ft)
7,000.30	0.83	351.33	6,999.52	74.30	-25.41	77.99	0.45	0.24	-28.65
7,050.40	1.21	337.39	7,049.61	75.15	-25.67	78.87	0.90	0.76	-27.82
7,100.46	1.34	340.78	7,099.66	76.19	-26.07	79.98	0.30	0.26	6.77
7,150.98	1.95	327.92	7,150.15	77.48	-26.72	81.42	1.40	1.21	-25.46
7,200.04	2.42	325.25	7,199.18	79.04	-27.75	83.27	0.98	0.96	-5.44
7,250.52	2.89	322.54	7,249.60	80.92	-29.13	85.57	0.96	0.93	-5.37
7,300.27	3.85	320.75	7,299.27	83.21	-30.95	88.42	1.94	1.93	-3.60
7,350.92	4.27	317.89	7,349.79	85.93	-33.29	91.88	0.92	0.83	-5.65
7,400.38	4.37	318.39	7,399.11	88.70	-35.78	95.45	0.22	0.20	1.01
7,450.97	4.43	318.75	7,449.55	91.61	-38.35	99.19	0.13	0.12	0.71
7,500.90	4.47	318.54	7,499.33	94.52	-40.91	102.92	0.09	0.08	-0.42
7,550.07	3.95	318.16	7,548.37	97.22	-43.30	106.38	1.06	-1.06	-0.77
7,600.10	3.87	315.54	7,598.28	99.70	-45.64	109.64	0.39	-0.16	-5.24
7,651.03	3.70	315.83	7,649.10	102.11	-47.99	112.82	0.34	-0.33	0.57
7,692.64	3.46	315.43	7,690.63	103.97	-49.80	115.28	0.58	-0.58	-0.96
<b>Last SDI Gyro Survey</b>									

Design Annotations				
Measured Depth (ft)	Vertical Depth (ft)	Local Coordinates		Comment
		+N/-S (ft)	+E/-W (ft)	
49.78	49.78	0.05	0.26	First SDI Gyro Survey
7,692.64	7,690.63	103.97	-49.80	Last SDI Gyro Survey

Checked By: \_\_\_\_\_ Approved By: \_\_\_\_\_ Date: \_\_\_\_\_