

**ANADARKO PETROLEUM CORP - EBUS
DO NOT MAIL - PO BOX 4995
THE WOODLANDS, Texas**

Boyd 28C-32HZ

MAJORS 42

Post Job Summary **Cement Surface Casing**

Prepared for:
Date Prepared: 10/12/2013
Version: 1

Service Supervisor: MCBRIDE, NATHAN

Submitted by: FINNEY, SEAN

HALLIBURTON

HALLIBURTON

Wellbore Geometry

Job Tubulars					MD		Shoe Joint Length ft
Type	Description	Size in	ID in	Wt lbm/ft	Top ft	Bottom ft	
Casing	9 5/8" Surface Casing	9.63	8.921	36.00	0.00	1,070.00	42.00
Open Hole Section	13 1/2" Open Hole Section		13.500		0.00	1,071.00	0.00

HALLIBURTON

Pumping Schedule

Stage /Plug #	Fluid #	Fluid Type	Fluid Name	Surface Density lbm/gal	Avg Rate bbl/min	Surface Volume	Downhole Volume
1	1	Spacer	Fresh Water Spacer	8.33	5.00	10.0 bbl	10.0 bbl
1	2	Spacer	Mud Flush	8.40	5.00	12.0 bbl	12.0 bbl
1	3	Cement Slurry	SwiftCem B2	14.20	5.00	386.0 sacks	386.0 sacks

Fluids Pumped

Stage/Plug # 1 Fluid 1: Fresh Water Spacer
DUMMY MUD / FLUSH / SPACER SBC MATERIAL

Fluid Density: 8.33 lbm/gal
Fluid Volume: 10.00 bbl
Pump Rate: 5.00 bbl/min

Stage/Plug # 1 Fluid 2: Mud Flush
DUMMY MUD / FLUSH / SPACER SBC MATERIAL
3.33 lbm/bbl Mud Flush III
42 gal/bbl Mud Flush III

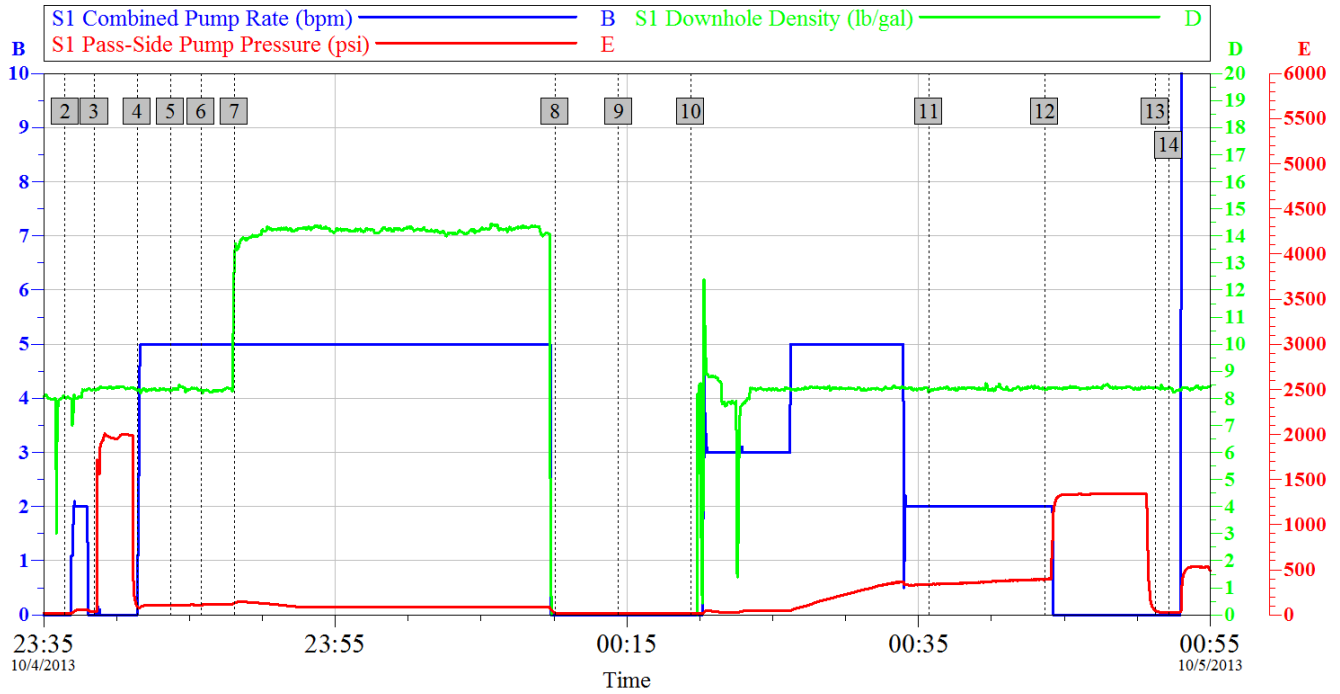
Fluid Density: 8.40 lbm/gal
Fluid Volume: 12.00 bbl
Pump Rate: 5.00 bbl/min

Stage/Plug # 1 Fluid 3: SwiftCem B2
SWIFTCEM (TM) SYSTEM

Fluid Weight: 14.20 lbm/gal
Slurry Yield: 1.54 ft³/sack
Total Mixing Fluid: 7.66 Gal
Surface Volume: 386.0 sacks
Sacks: 386.0 sacks
Calculated Fill: 900.00 ft
Calculated Top of Fluid: 0.00 ft

HALLIBURTON

Data Acquisition



Global Event Log

2	Start Job	10/4/2013 23:36:28	3	Test Lines	10/4/2013 23:38:29	4	Fresh Water Ahead	10/4/2013 23:41:25
5	Pump Mud Flush	10/4/2013 23:43:42	6	Fresh Water Ahead	10/4/2013 23:45:48	7	Pump Cement	10/4/2013 23:48:04
8	Shutdown	10/5/2013 00:10:03	9	Drop Top Plug	10/5/2013 00:14:25	10	Pump Displacement	10/5/2013 00:19:23
11	Cement to Surface	10/5/2013 00:35:41	12	Bump Plug	10/5/2013 00:43:39	13	Check Floats	10/5/2013 00:51:13
14	End Job	10/5/2013 00:52:09						

Customer:	Anadarko	Job Date:	04-Oct-2013	Sales Order #:	900801038
Well Description:	Boyd 28C-32HZ	Job Type:	Surface	Supervisor:	McBride

OptiCem v6.4.10
05-Oct-13 01:26

HALLIBURTON

Service Supervisor Reports

Job Log

Date/Time	Chart #	Activity Code	Pump Rate	Cum Vol	Pump	Pressure (psig)	Comments
10/04/2013 20:10		Rig-Up Equipment					Containment on Location @ 2230
10/04/2013 21:30		Arrive at Location from Service Center					All equipment and materials on location Rig Running Casing
10/04/2013 21:35		Assessment Of Location Safety Meeting					Hazard Hunt and review fluid location, wash up and truck layout
10/04/2013 21:40		Pre-Rig Up Safety Meeting					No containment on location called Hot Shot.
10/04/2013 22:00		Casing on Bottom					
10/04/2013 22:05		Circulate Well					1hr
10/04/2013 22:45		Rig-Up Completed					
10/04/2013 23:00		Pre-Job Safety Meeting					
10/04/2013 23:36		Start Job					
10/04/2013 23:37		Pump Water	2	2		46.0	Fill Lines
10/04/2013 23:38		Test Lines				2019.0	
10/04/2013 23:41		Pump Spacer	5	10		80.0	Fresh Water
10/04/2013 23:43		Pump Spacer	5	12		85.0	Mud Flush
10/04/2013 23:45		Pump Spacer	5	10		90.0	Fresh Water
10/04/2013 23:48		Pump Lead Cement	5	105.9		110.0	386sks @ 14.2ppg, 1.54yield, 7.66gal/sk
10/05/2013 00:14		Drop Top Plug					
10/05/2013 00:19		Spacer Returns to Surface					Mud Flush to Surface @ Start of Displacement
10/05/2013 00:19		Pump Displacement	5	79.3		380.0	Fresh Water
10/05/2013 00:35		Cement Returns to Surface					67bbls Displaced 12bbls to Surface
10/05/2013 00:43		Bump Plug				425.0	1320 Final bump Pressure
10/05/2013 00:51		Check Floats					Floats Good
10/05/2013 00:52		End Job					Thanks McBride and Crew

The Road to Excellence Starts with Safety

Sold To #: 300466		Ship To #: 3109695		Quote #:		Sales Order #: 900801038	
Customer: ANADARKO PETROLEUM CORP - EBUS				Customer Rep: Hersh, Larry			
Well Name: Boyd			Well #: 28C-32HZ		API/UWI #: 05-123-37773		
Field: WATTENBERG		City (SAP): HUDSON		County/Parish: Weld		State: Colorado	
Lat: N 40.074 deg. OR N 40 deg. 4 min. 26.4 secs.				Long: W 104.687 deg. OR W -105 deg. 18 min. 46.8 secs.			
Contractor: MAJORS			Rig/Platform Name/Num: MAJORS 42				
Job Purpose: Cement Surface Casing							
Well Type: Development Well				Job Type: Cement Surface Casing			
Sales Person: EVANS, MATTHEW			Srvc Supervisor: MCBRIDE, NATHAN			MBU ID Emp #: 313810	

Job Personnel

HES Emp Name	Exp Hrs	Emp #	HES Emp Name	Exp Hrs	Emp #	HES Emp Name	Exp Hrs	Emp #
MAYFIELD, BYRON L	4.2	528751	MCBRIDE, NATHAN Charles	4.2	313810			

Equipment

HES Unit #	Distance-1 way	HES Unit #	Distance-1 way	HES Unit #	Distance-1 way	HES Unit #	Distance-1 way
10822531C	15 mile	11362287C	15 mile	11633848	15 mile		

Job Hours

Date	On Location Hours	Operating Hours	Date	On Location Hours	Operating Hours	Date	On Location Hours	Operating Hours

TOTAL *Total is the sum of each column separately*

Job

Job Times

Formation Name	Formation Depth (MD) Top	Bottom	Form Type	Job depth MD	Job Depth TVD	Water Depth	Wk Ht Above Floor	Perforation Depth (MD) From	To	Called Out	Date	Time	Time Zone
	1071. ft		BHST	1071. ft	1071. ft		5. ft			04 - Oct - 2013	04 - Oct - 2013	16:45	MST
										04 - Oct - 2013	04 - Oct - 2013	21:30	MST
										04 - Oct - 2013	04 - Oct - 2013	23:36	MST
										05 - Oct - 2013	05 - Oct - 2013	01:06	MST
										05 - Oct - 2013	05 - Oct - 2013	01:40	MST

Well Data

Description	New / Used	Max pressure psig	Size in	ID in	Weight lbm/ft	Thread	Grade	Top MD ft	Bottom MD ft	Top TVD ft	Bottom TVD ft
13 1/2" Open Hole Section				13.5				.	1071.		
9 5/8" Surface Casing	Unknown		9.625	8.921	36.		J-55	.	1070.		

Sales/Rental/3rd Party (HES)

Description	Qty	Qty uom	Depth	Supplier
CMT CASING EQUIPMENT BOM	1	JOB		
MILEAGE FOR CEMENTING CREW,ZI	30	MI		
ZI FUEL SURCHG-CARS/PICKUPS<1 1/2TON	30	MI		
KIT,HALL WELD-A	1	EA		
CNTRLZR, 9 5/8"x13 3/4',#500-0963-1375	7	EA		
Description	Qty	Qty uom	Depth	Supplier

BASKET - CEMENT - 9-5/8 CSG X 12-1/4						1	EA		
PLUG,CMTG, TOP, 9 5/8, HWE, 8.16 MIN/9.06 MA						1	EA		
COLLAR-STOP-9 5/8"-FRICTION-HINGED						2	EA		
Fluid Data									
Stage/Plug #: 1									
Fluid #	Stage Type	Fluid Name	Qty	Qty uom	Mixing Density lbm/gal	Yield ft ³ /sk	Mix Fluid Gal/sk	Rate bbl/min	Total Mix Fluid Gal/sk
1	Fresh Water Spacer		10.00	bbl	8.33	.0	.0	5.0	
2	Mud Flush		12.00	bbl	8.4	.0	.0	5.0	
3.33 lbm/bbl		MUD FLUSH III, 40 LB SACK (101633304)							
42 gal/bbl		MUD FLUSH III - SBM (528788)							
3	SwiftCem B2	SWIFTCEM (TM) SYSTEM (452990)	386.0	sacks	14.2	1.54	7.66	5.0	7.66
7.66 Gal		FRESH WATER							
Calculated Values		Pressures		Volumes					
Displacement		Shut In: Instant		Lost Returns		Cement Slurry		Pad	
Top Of Cement		5 Min		Cement Returns		Actual Displacement		Treatment	
Frac Gradient		15 Min		Spacers		Load and Breakdown		Total Job	
Rates									
Circulating		Mixing		Displacement		Avg. Job			
Cement Left In Pipe		Amount	42 ft	Reason	Shoe Joint				
Frac Ring # 1 @	ID	Frac ring # 2 @	ID	Frac Ring # 3 @	ID	Frac Ring # 4 @	ID		
The Information Stated Herein Is Correct				Customer Representative Signature					

