



CROW CREEK STATE AD31-79HN 5":100' TVD

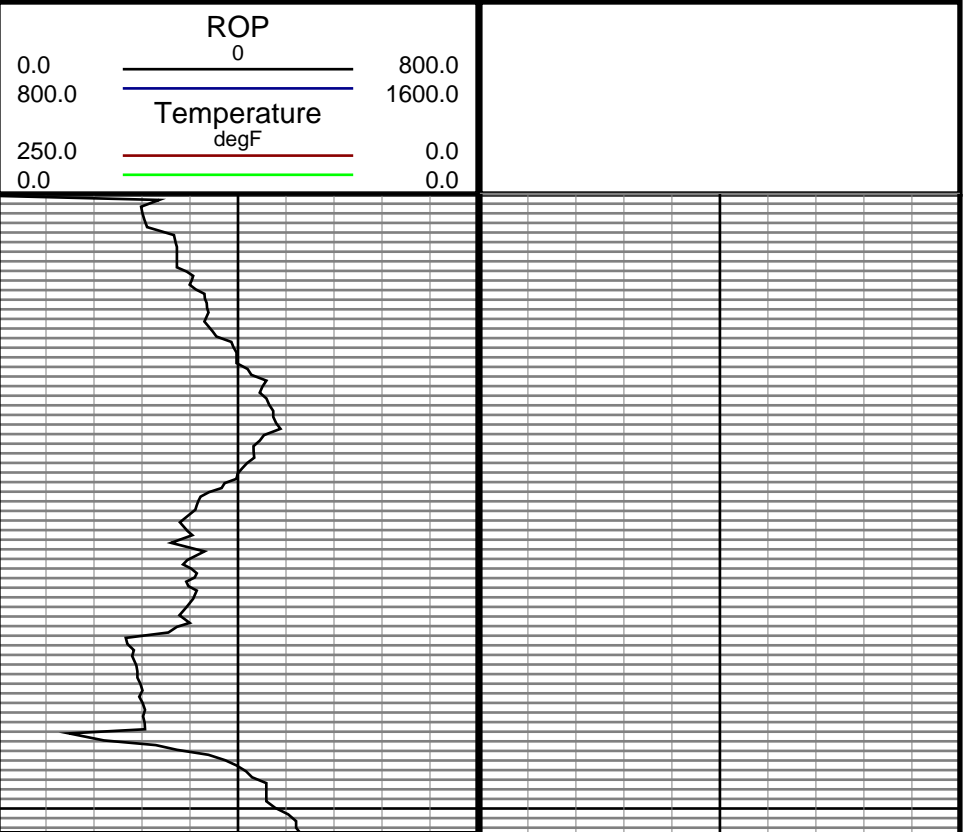
Company: NOBLE ENERGY
Well Name: CROW CREEK STATE AD31-79HN
UWI or LSD:
Rig Id: H&P 277
State: CO
County/Parish: WELD COUNTY
Country: USA
Survey Company: DRILTECH, LLC
Job number: 2013-338-IDDT-CO
Jeremy Howe
Josh Caylor

Log measurements:
Depth measured from:
Maximum temperature:
Depth Start: 636 ft 11/27/2013
End: 11353 ft 12/02/2013

Casing Depth Size
Surface: 626 9.625
Intermediate: 7199 7.0
Mud Type: WATER BASE
Density: 9.2
Viscosity: 32
Rm: Rmf: Rmc:
Elevations
KB: 4872
GL: 4848
DF:

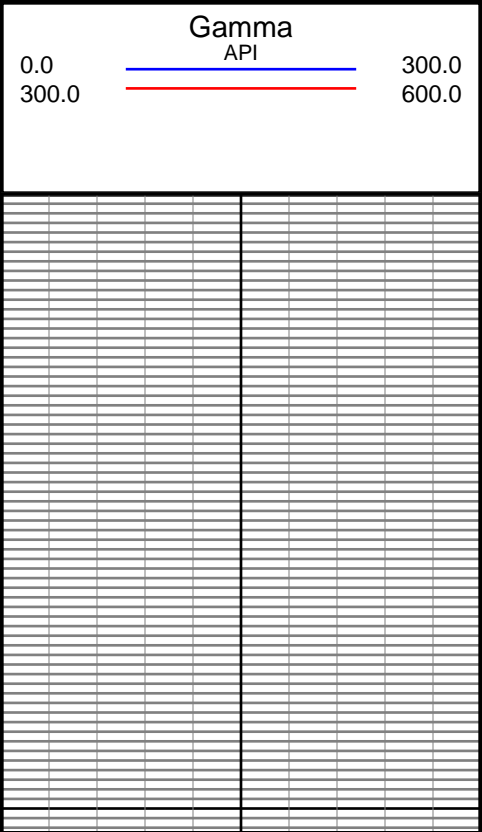
Run	Bit Size	Gamma	Offsets	Survey	Start	End	Dates	Start	End
1	8 3/4	38.00	56.00	636	6191	7209	11/27/2013	11/29/2013	11/30/2013
2	8 3/4	45.00	63.00	6191	7209	11353	11/29/2013	12/01/2013	12/02/2013
3	6 1/8	42.00	54.00	7209	11353				
4									
5									
6									
7									
8									
9									
10									

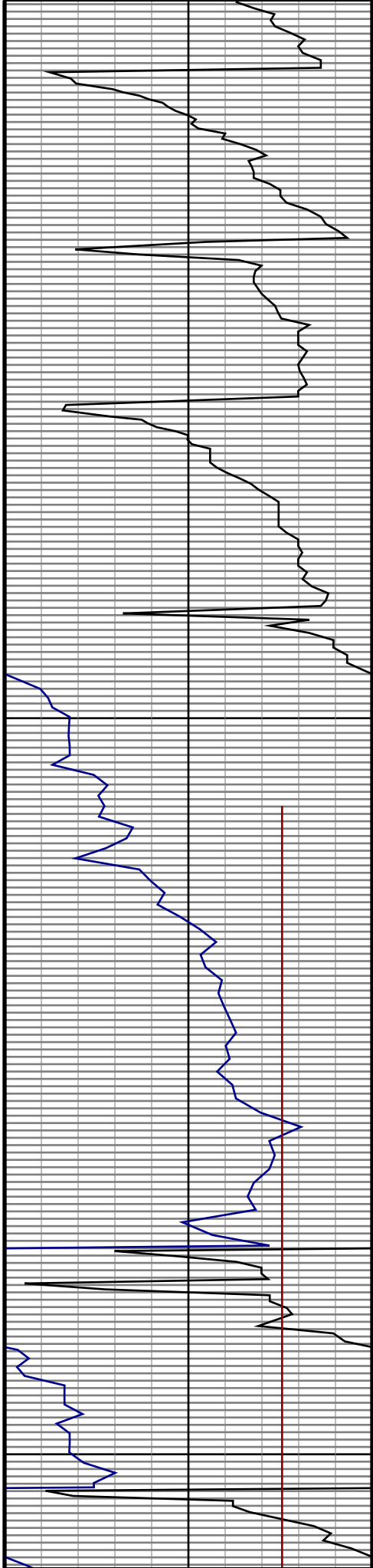
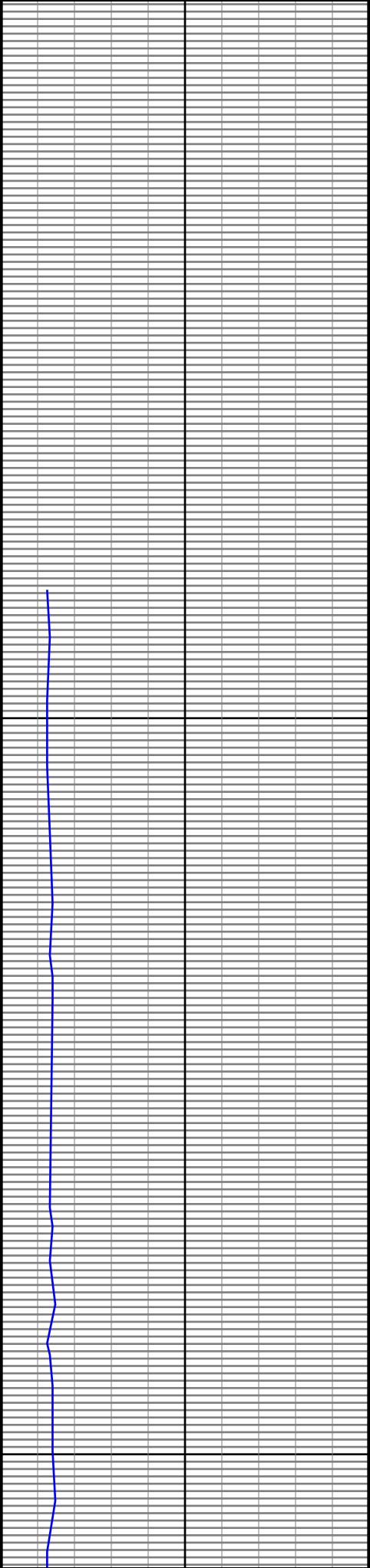
DRILTECH, LLC uses its best efforts to provide its customers with accurate information and interpretations in conjunction with services performed but will not be held liable or responsible for the accuracy of such information or interpretation.

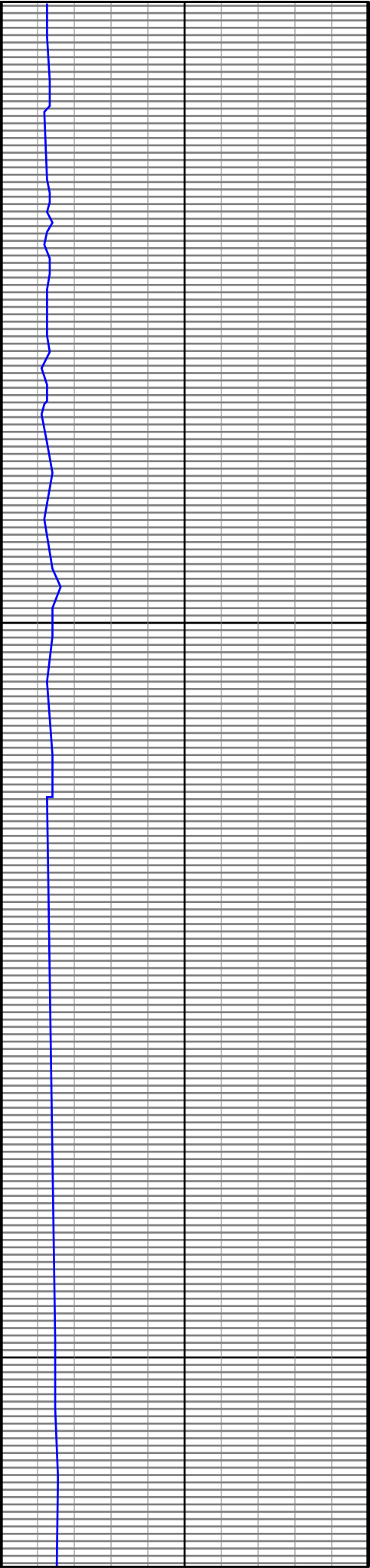


TVD

700

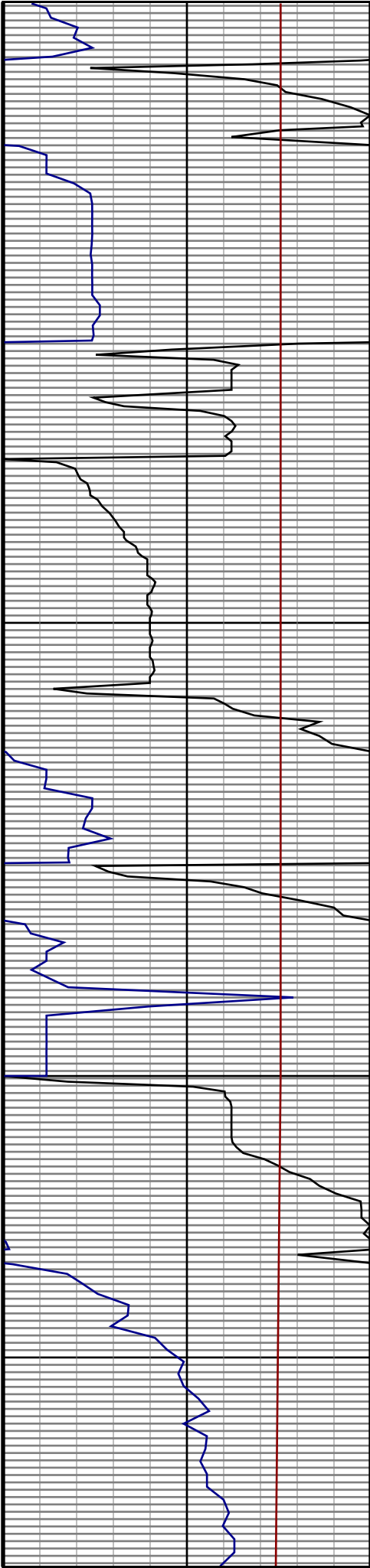


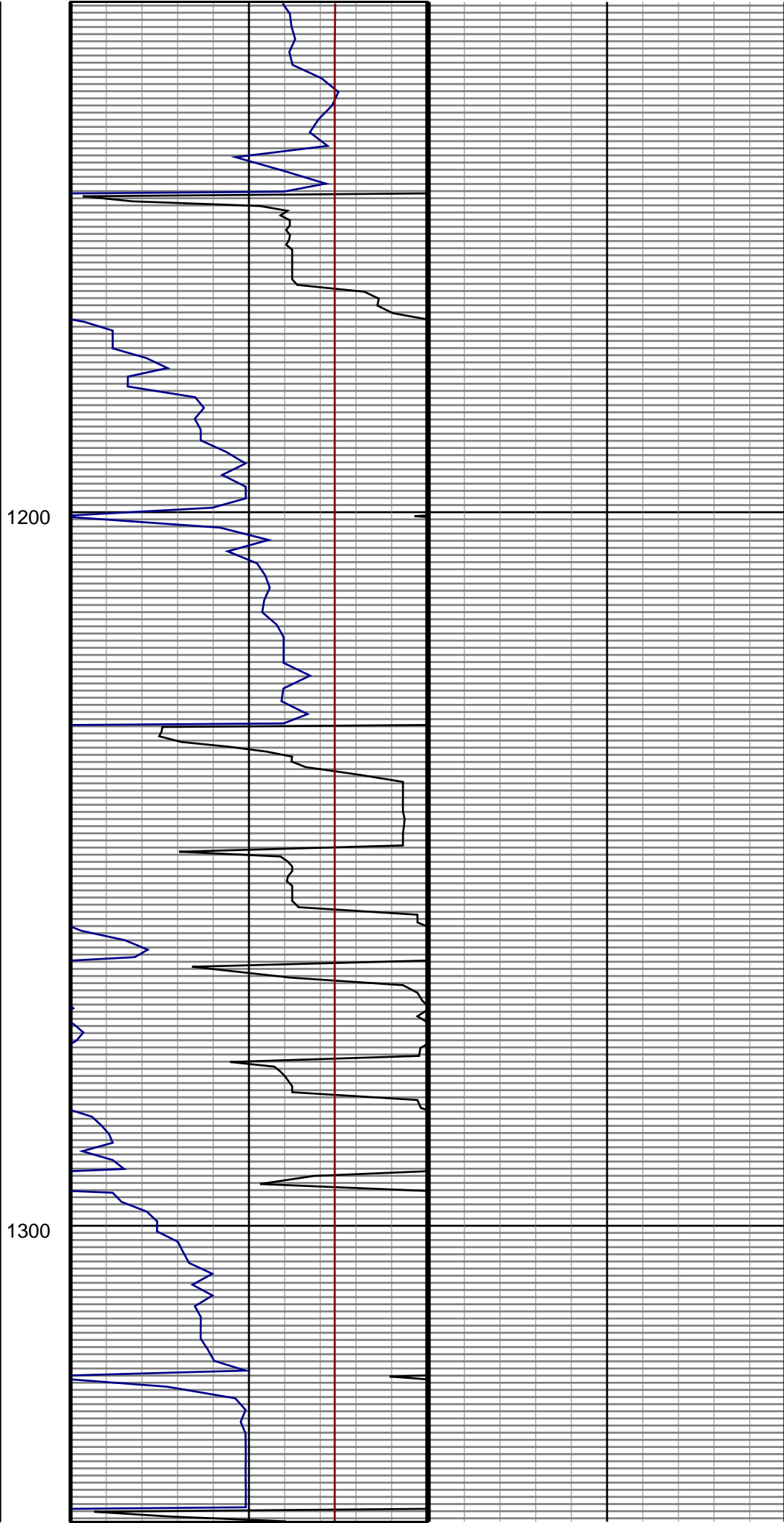
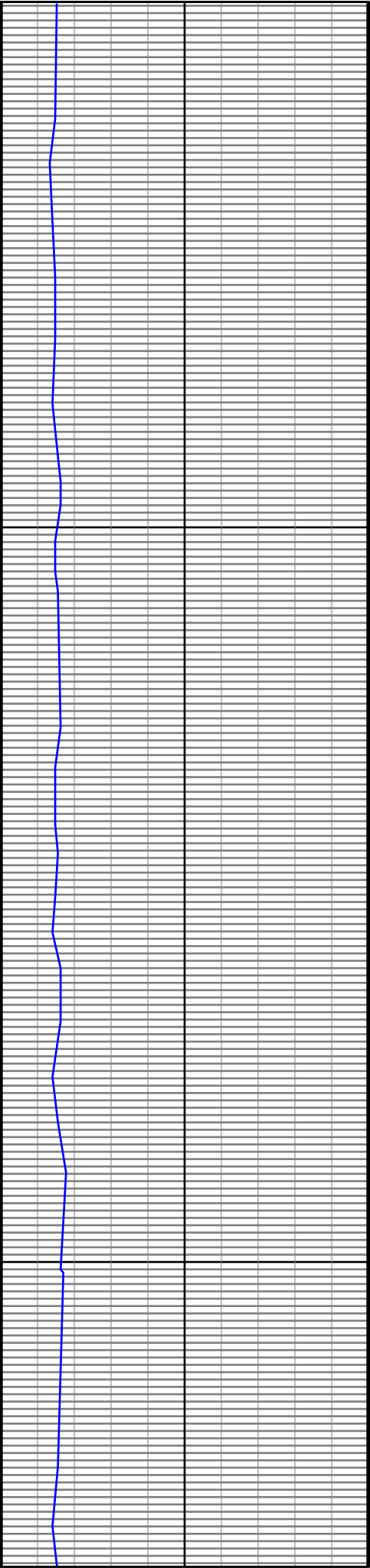


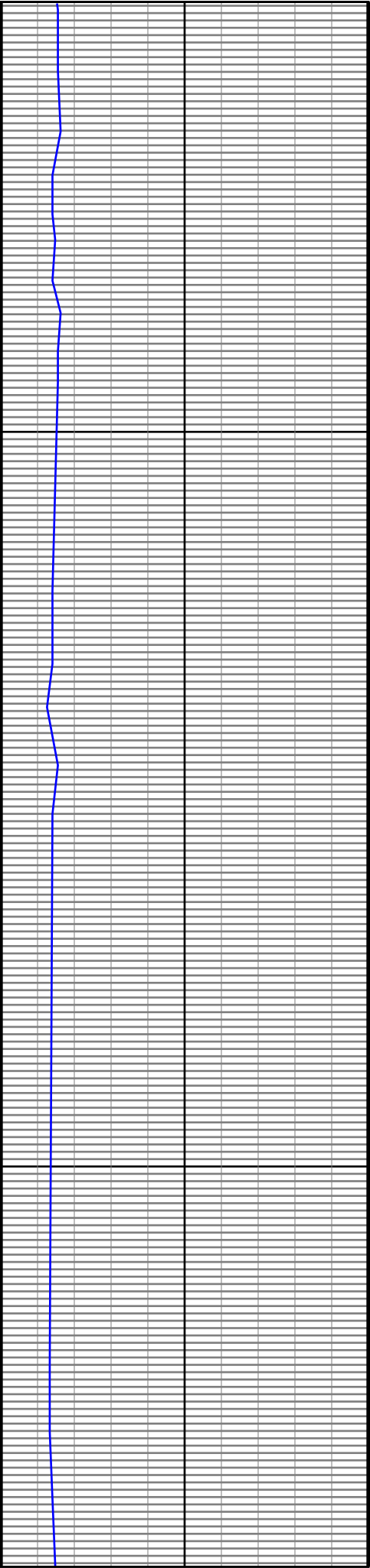


1000

1100

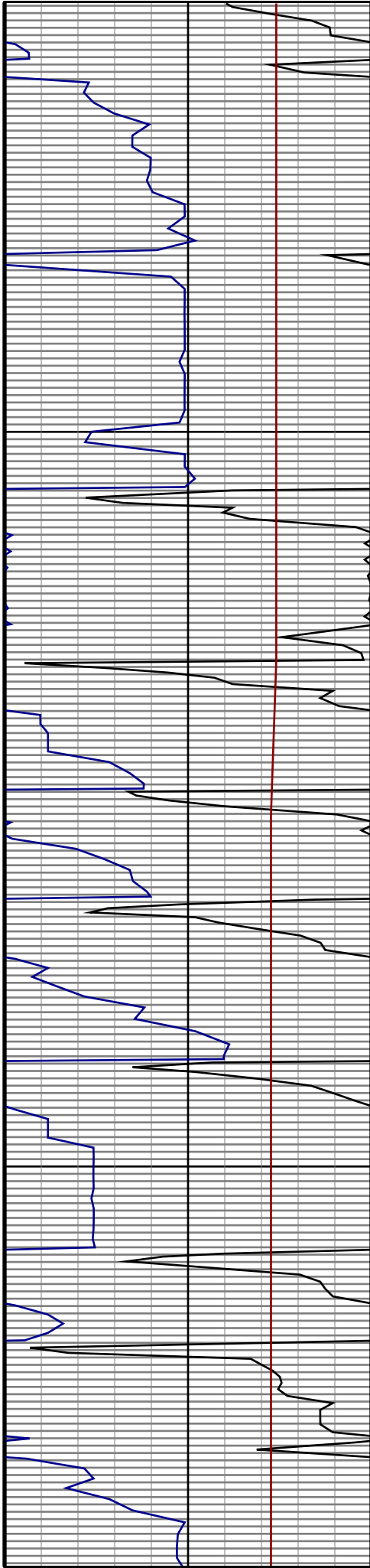


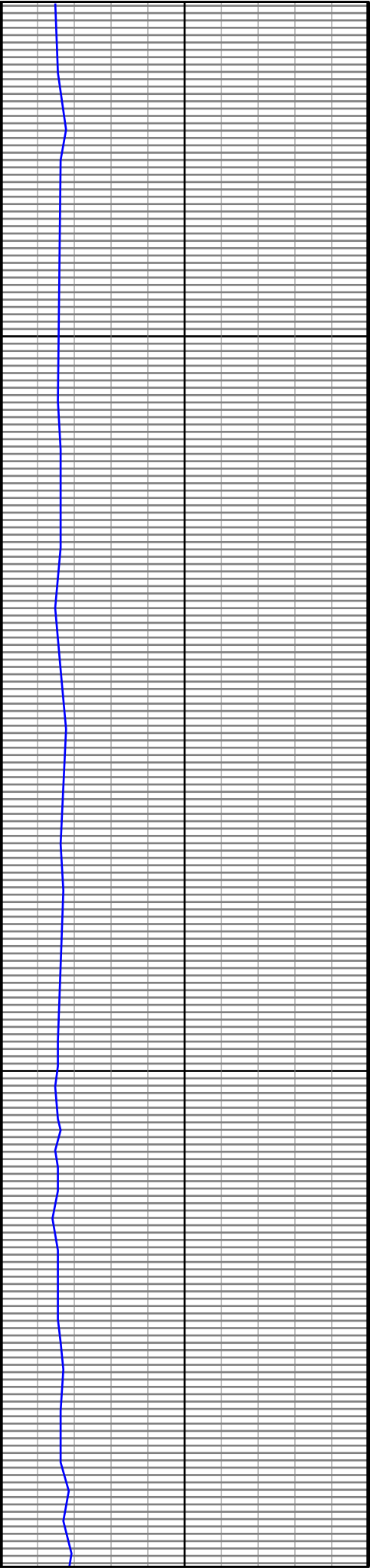




1400

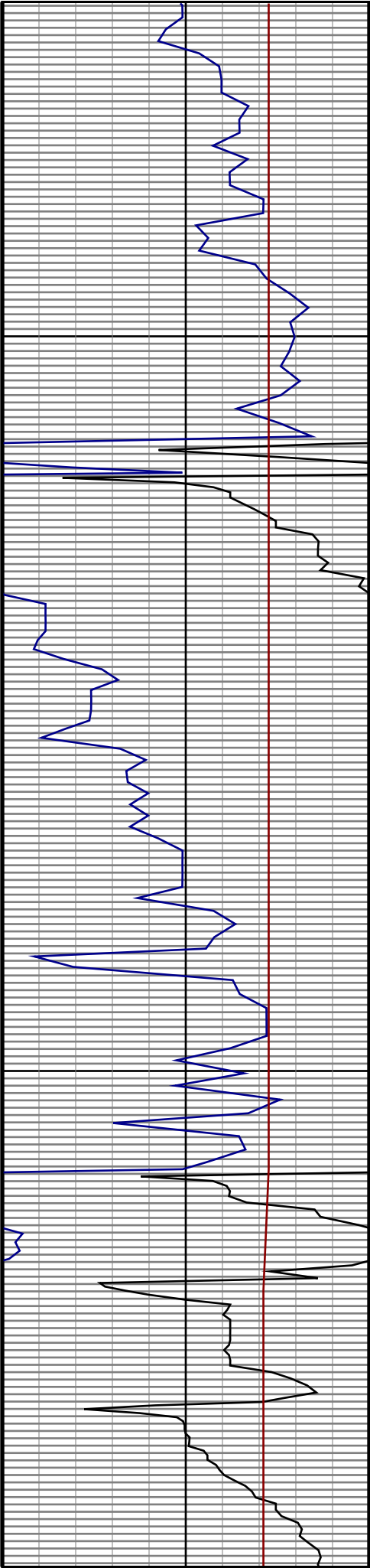
1500

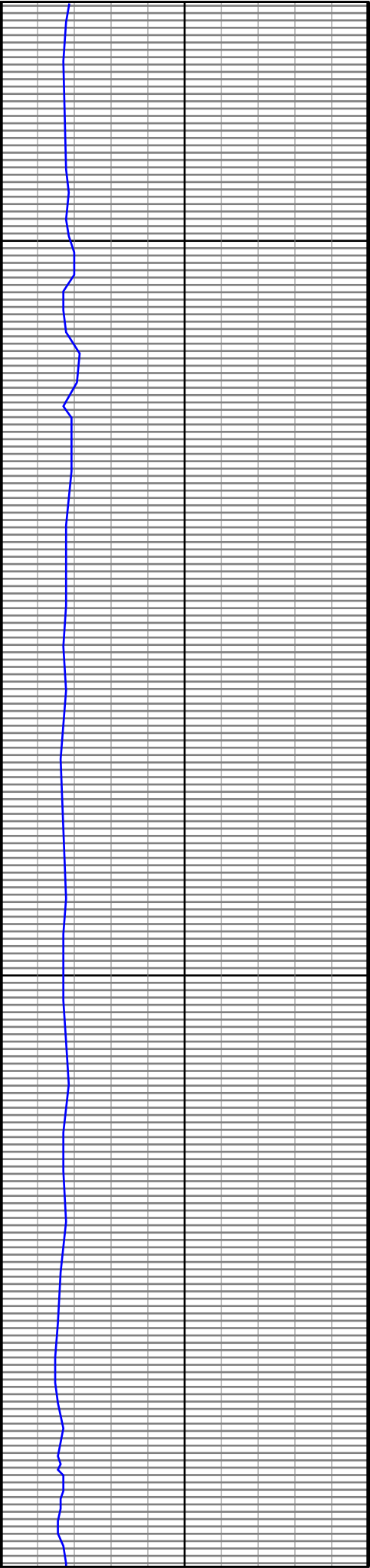




1600

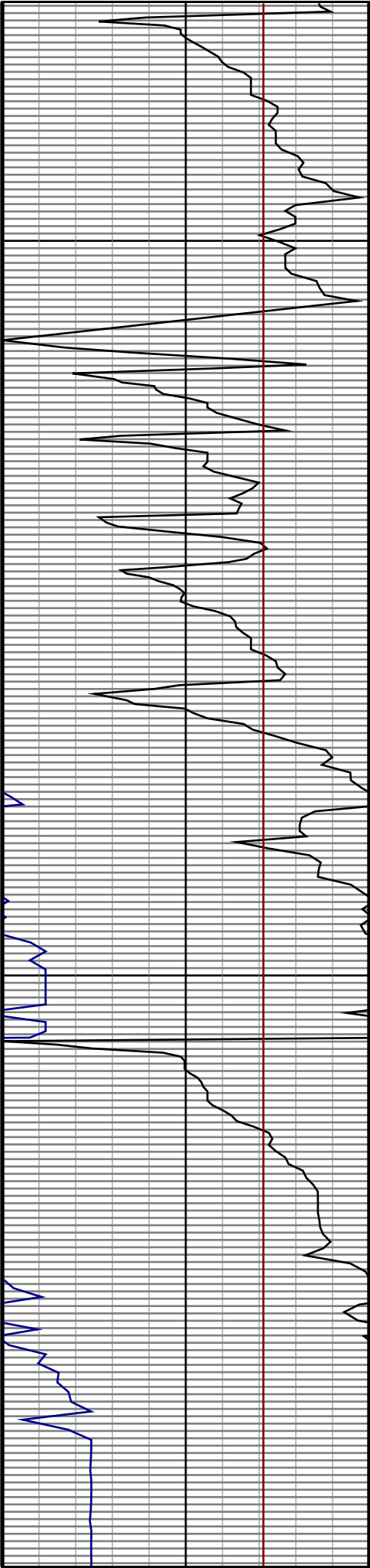
1700

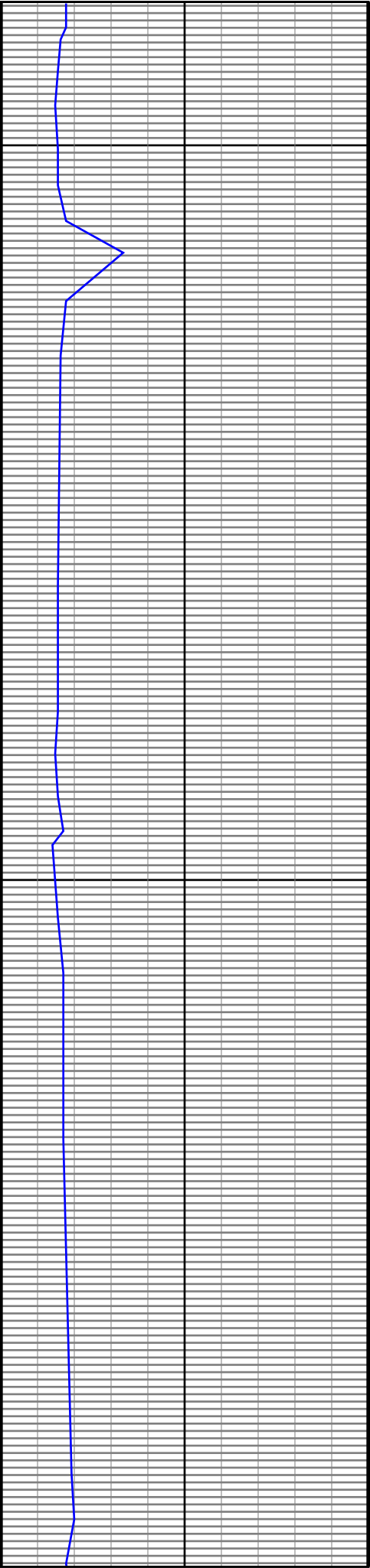




1800

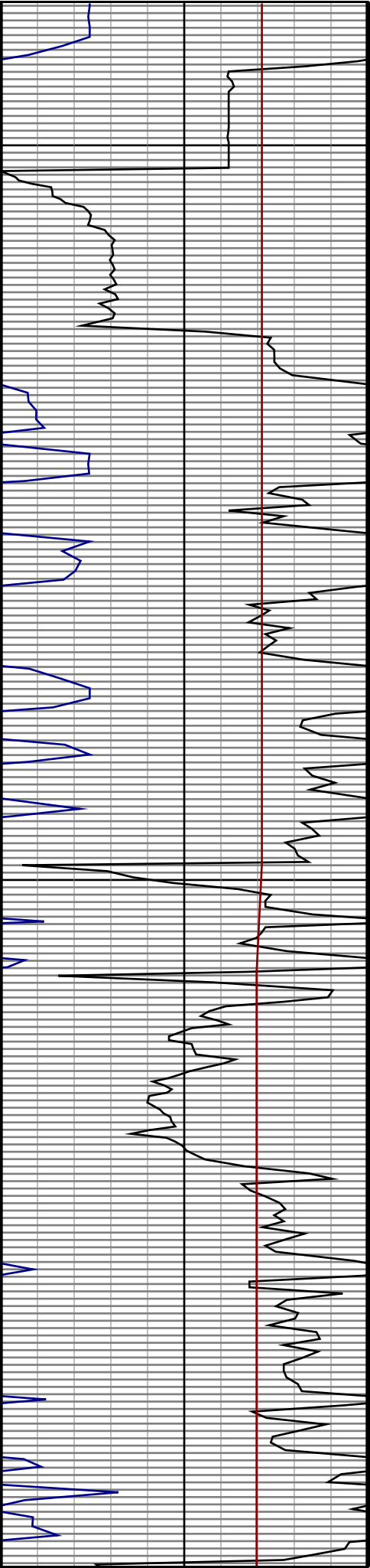
1900

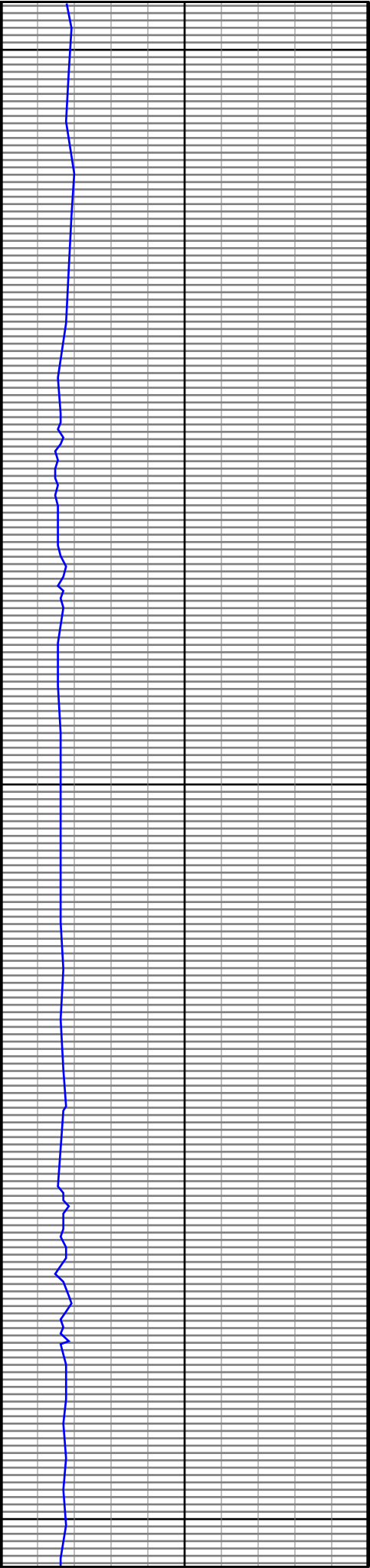




2000

2100

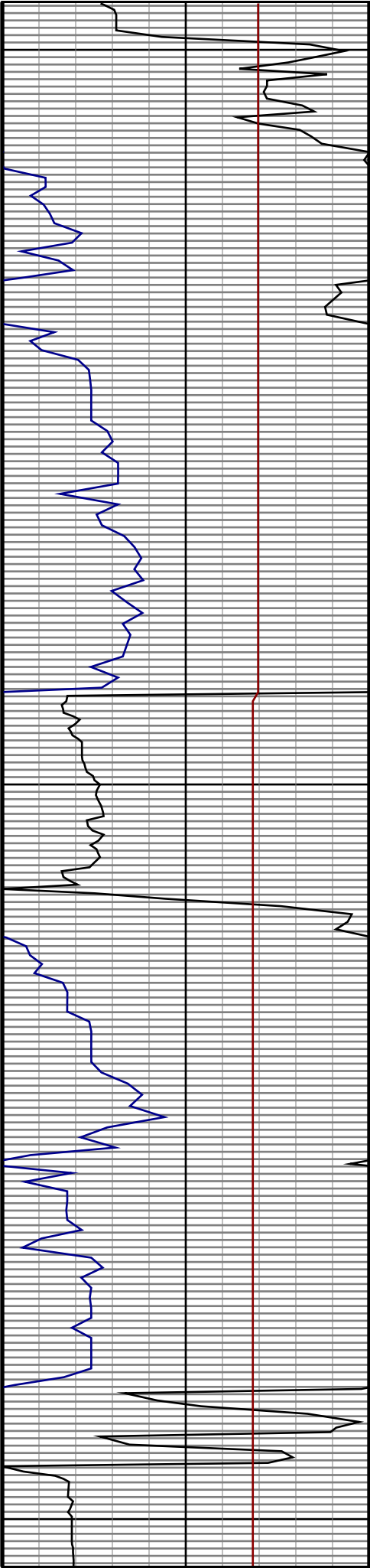


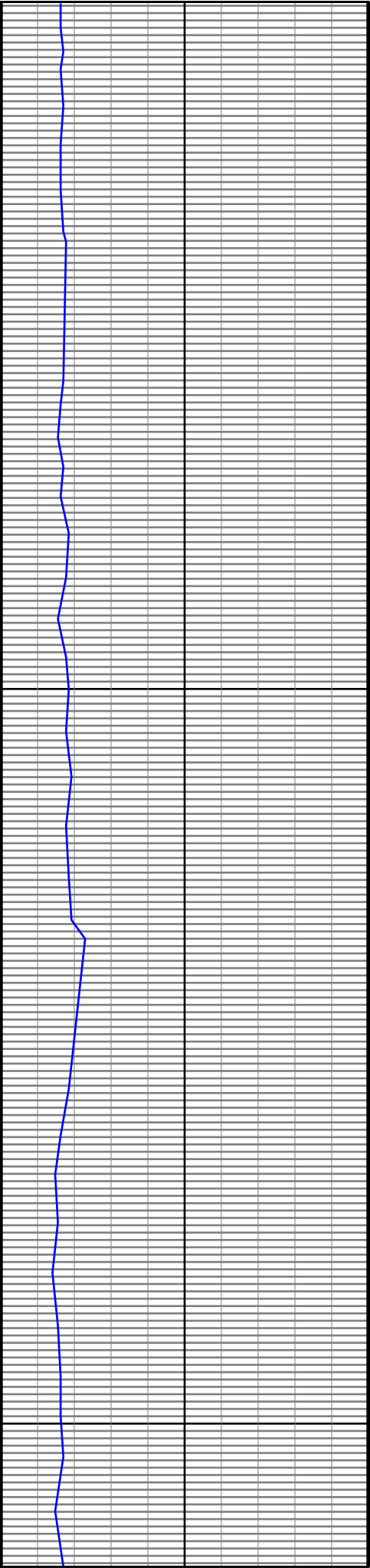


2200

2300

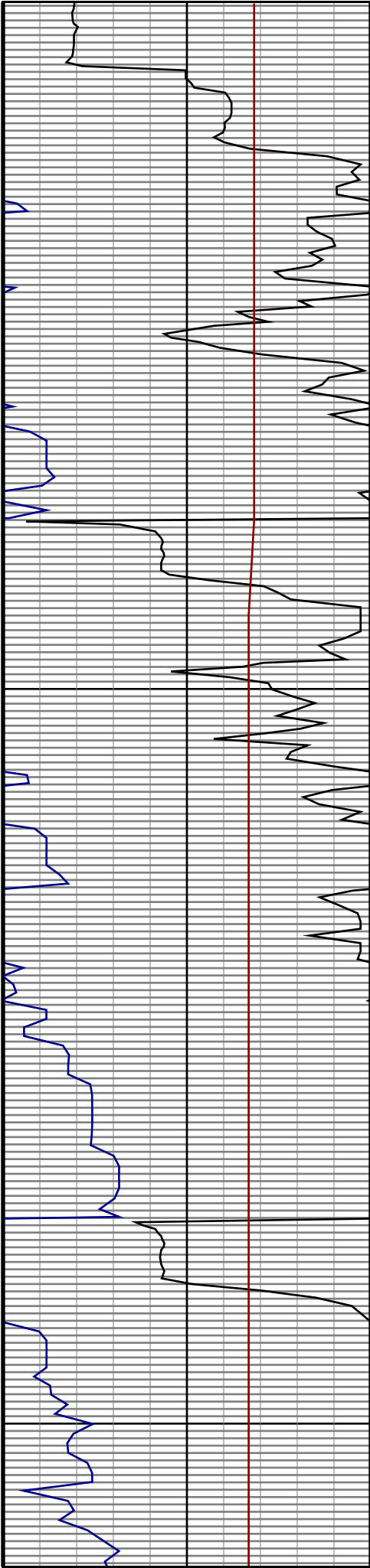
2400

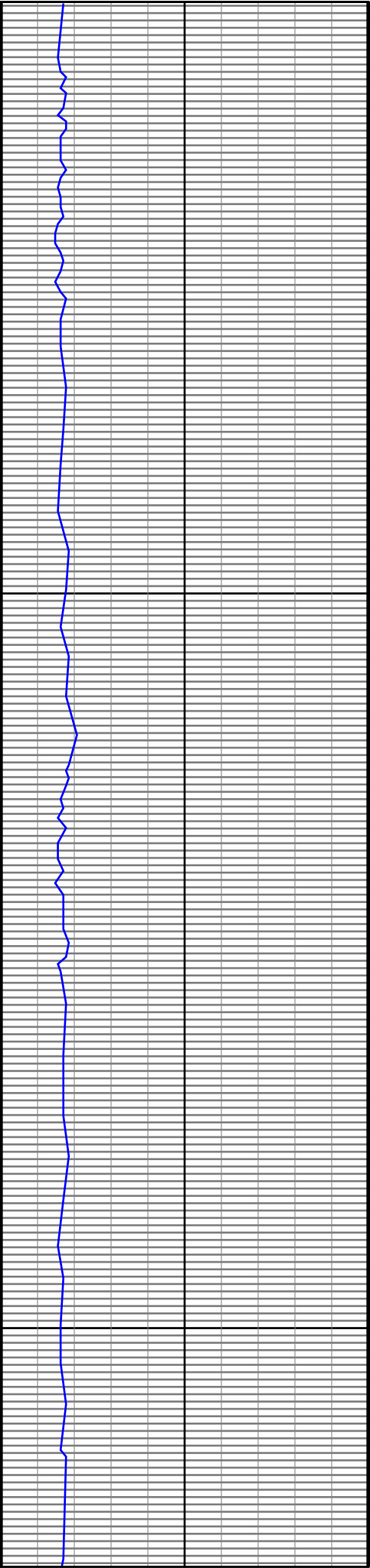




2500

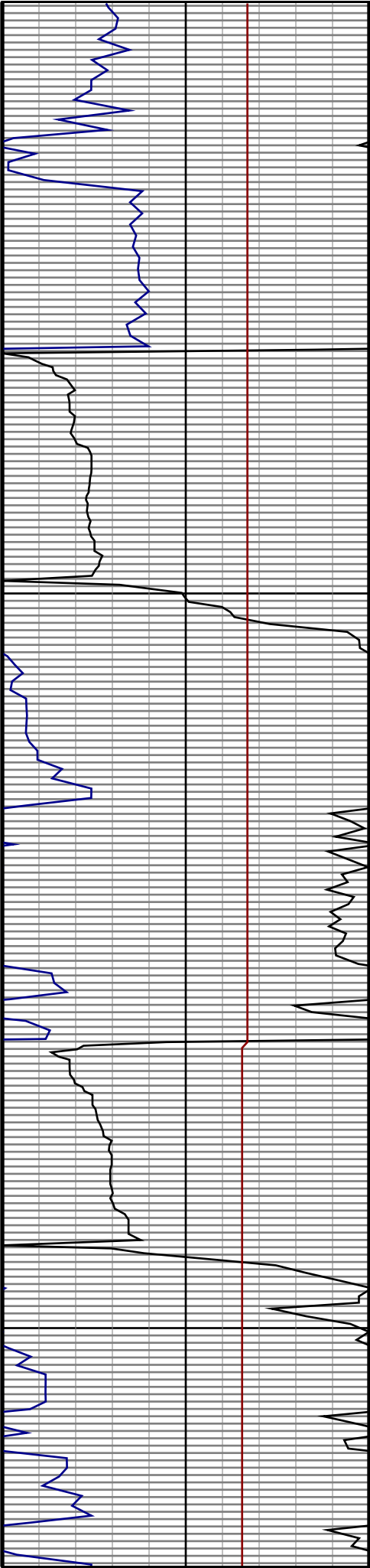
2600

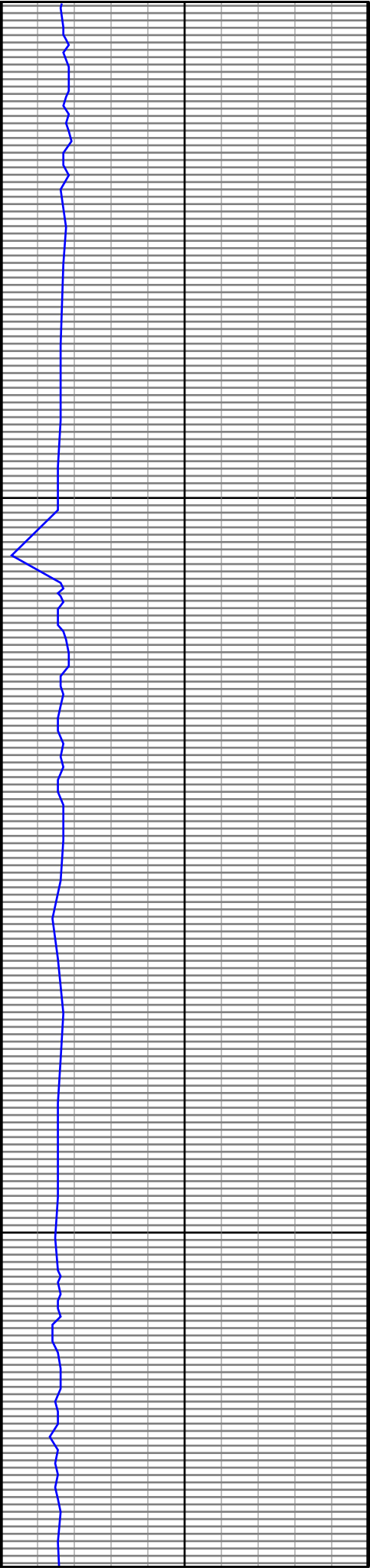




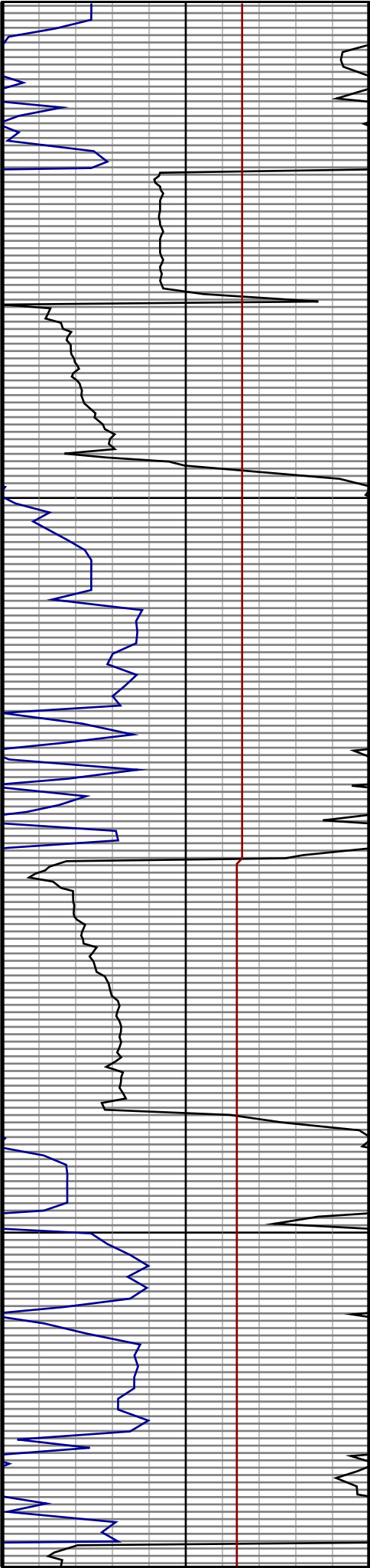
2700

2800

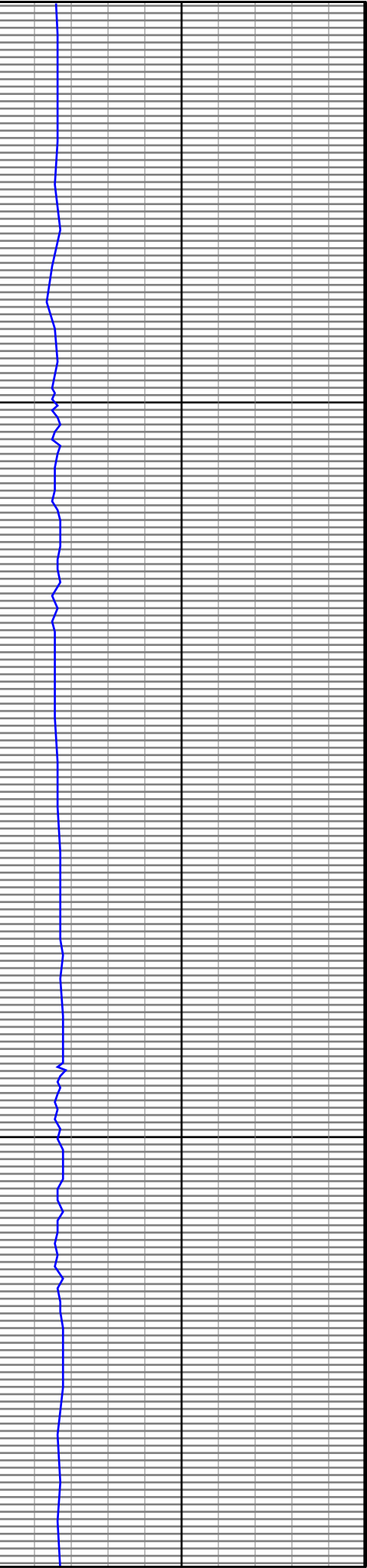




2900

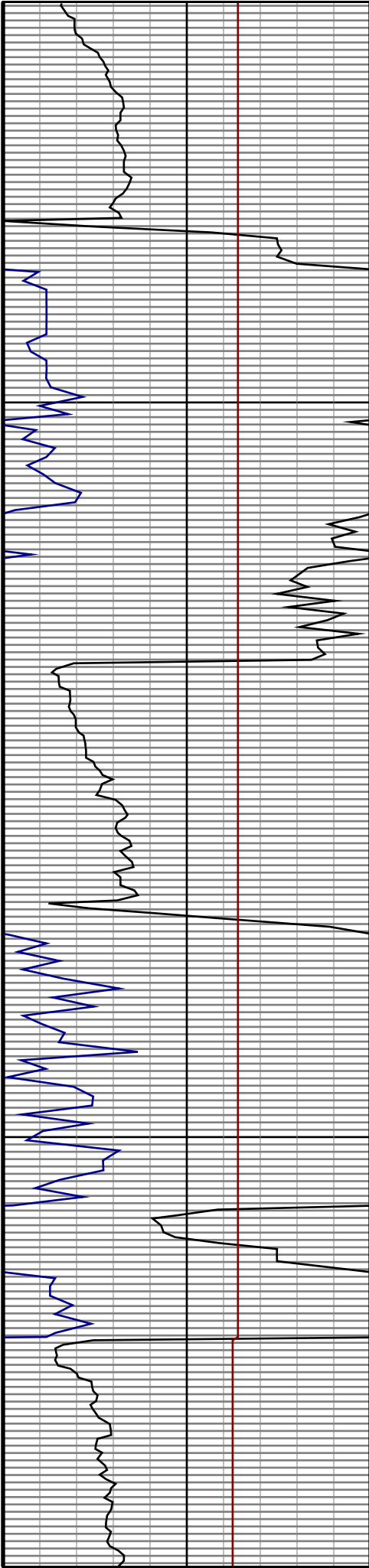


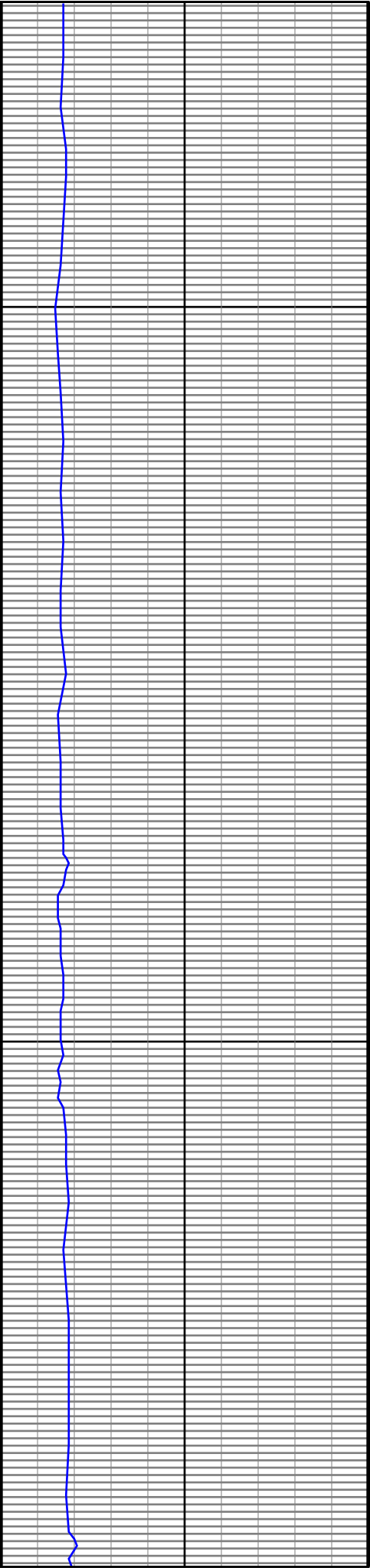
3000



3100

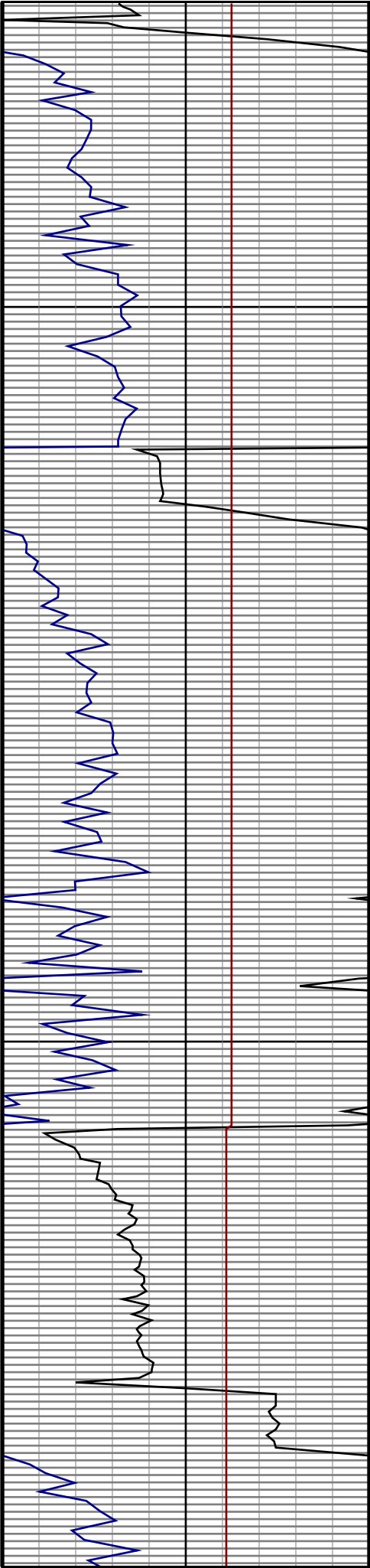
3200

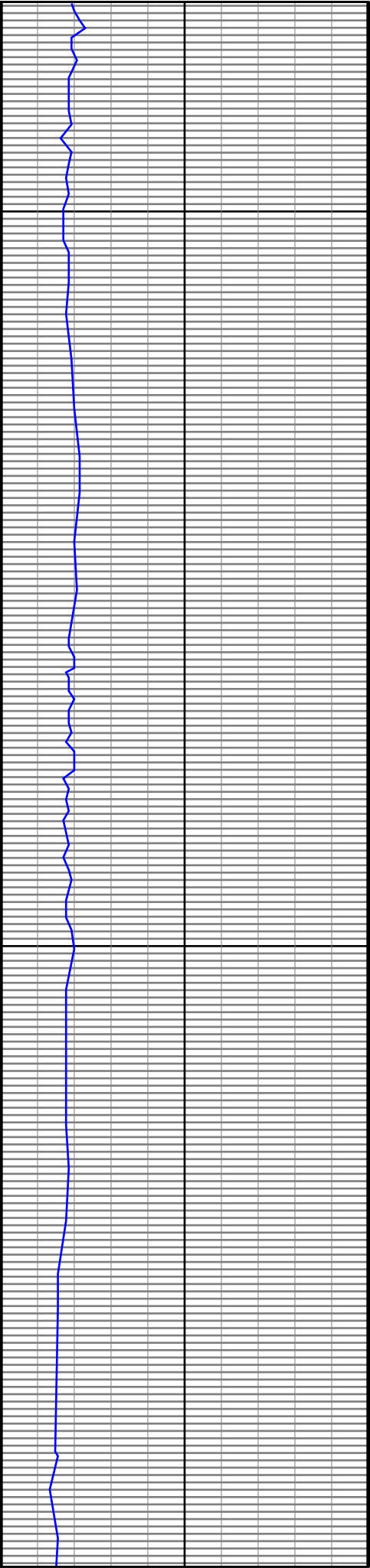




3300

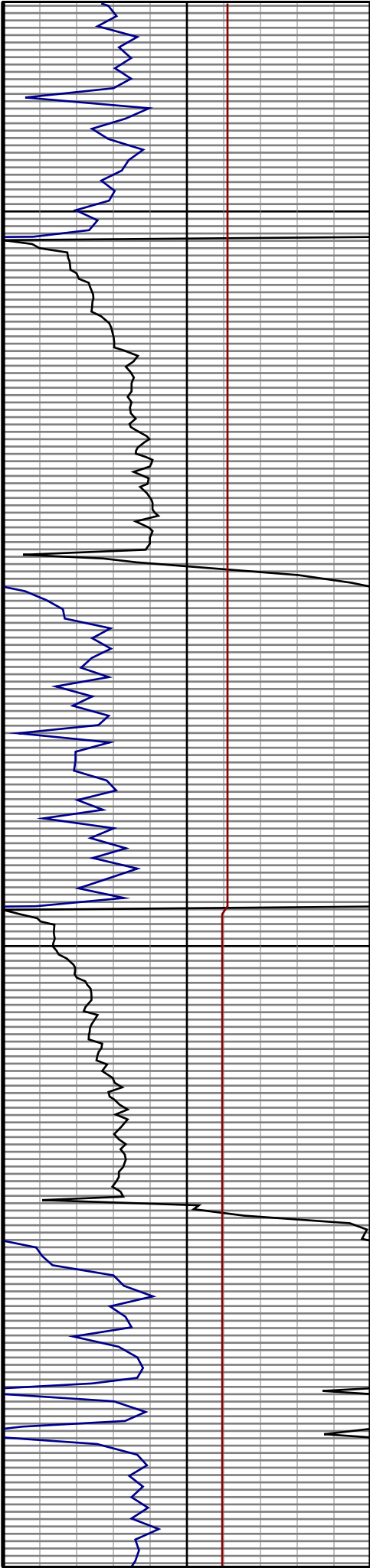
3400

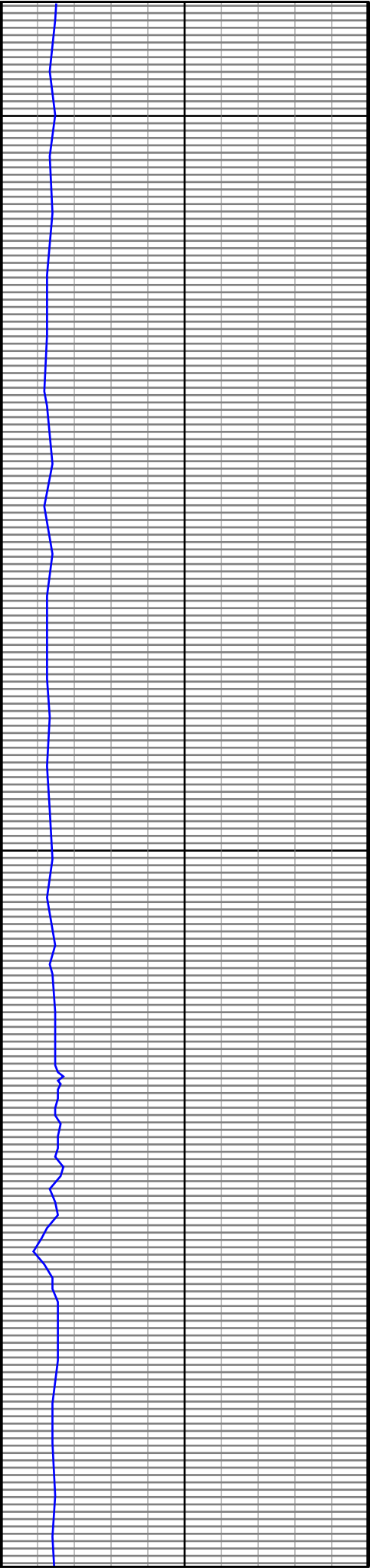




3500

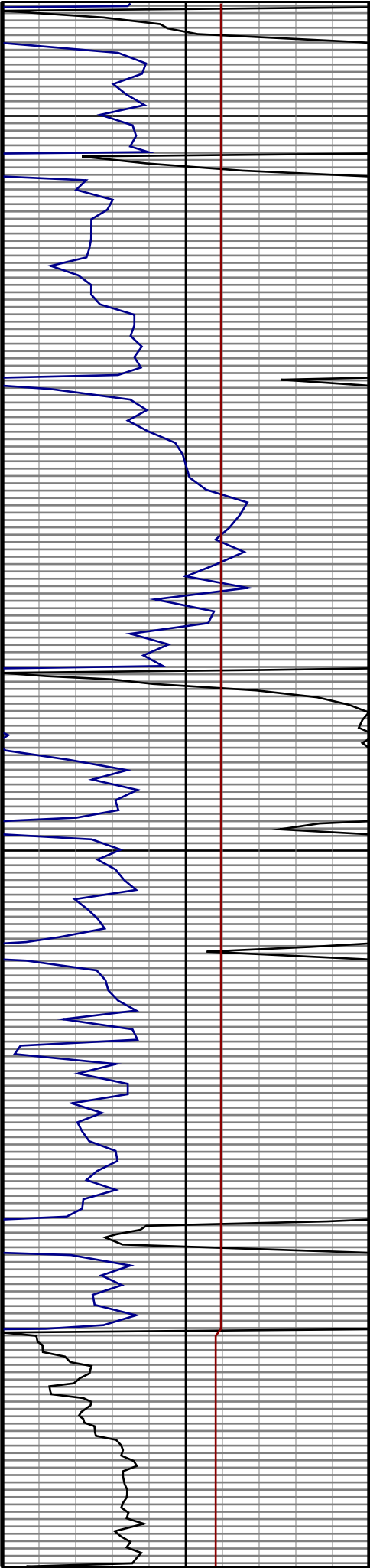
3600

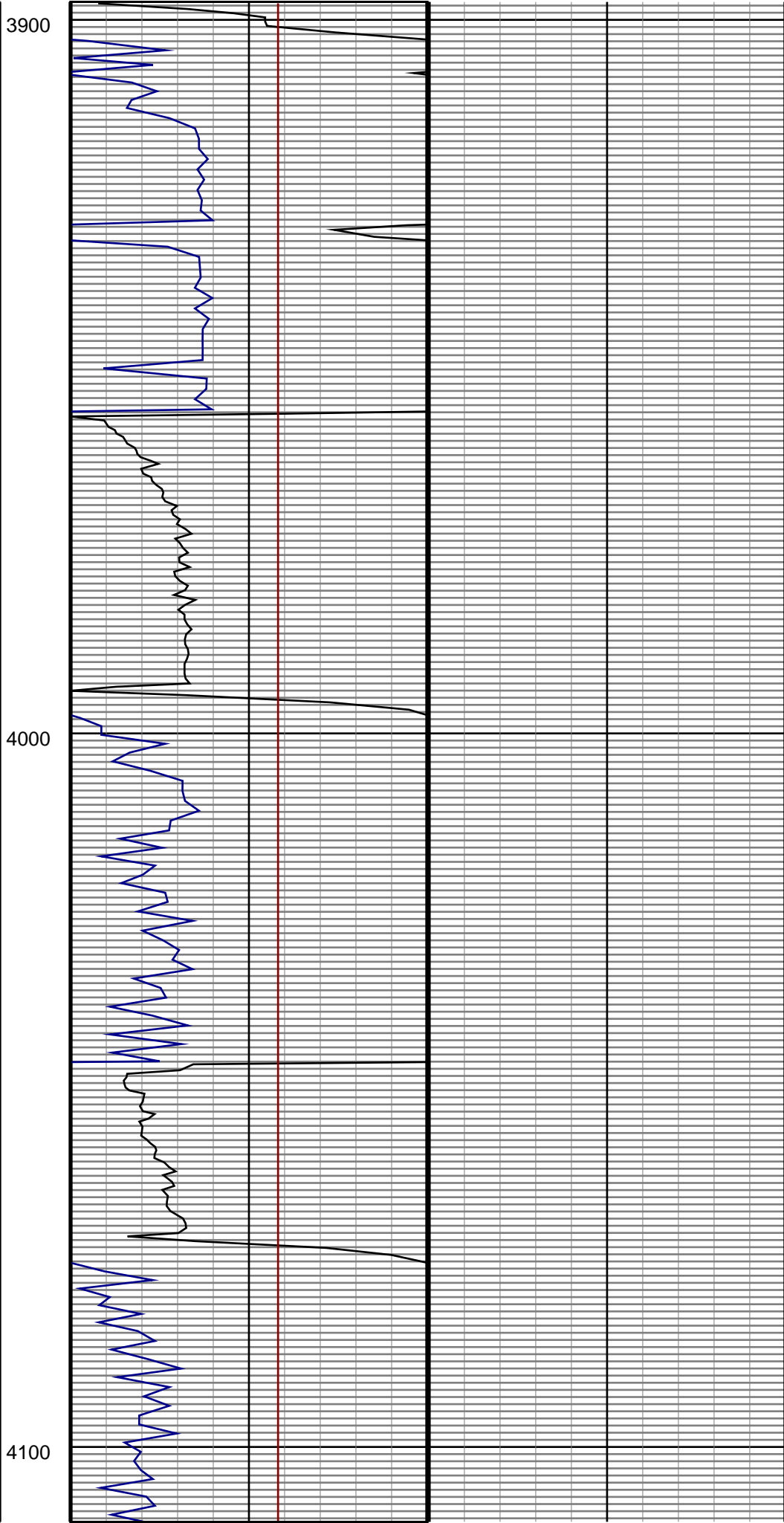
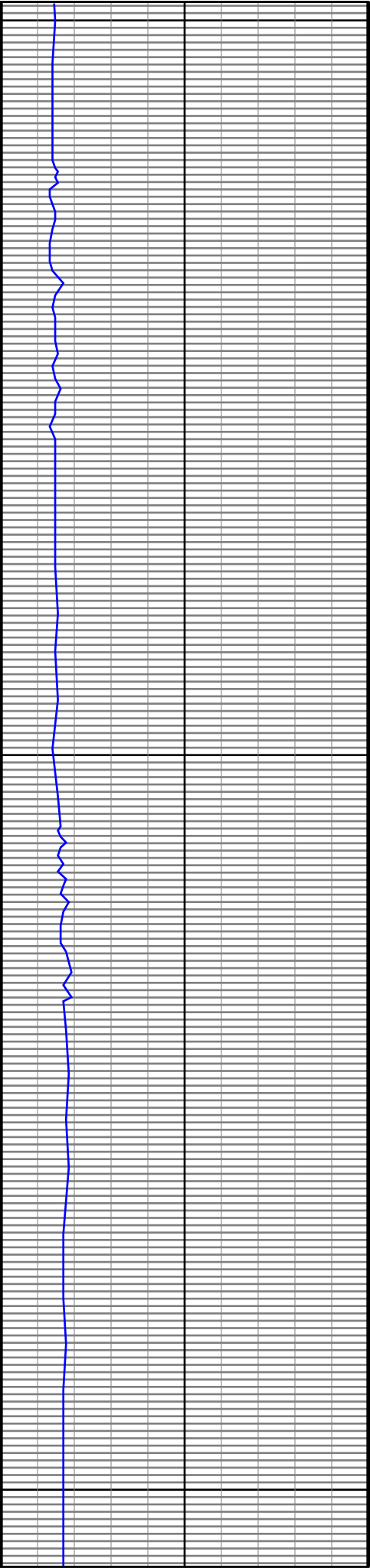


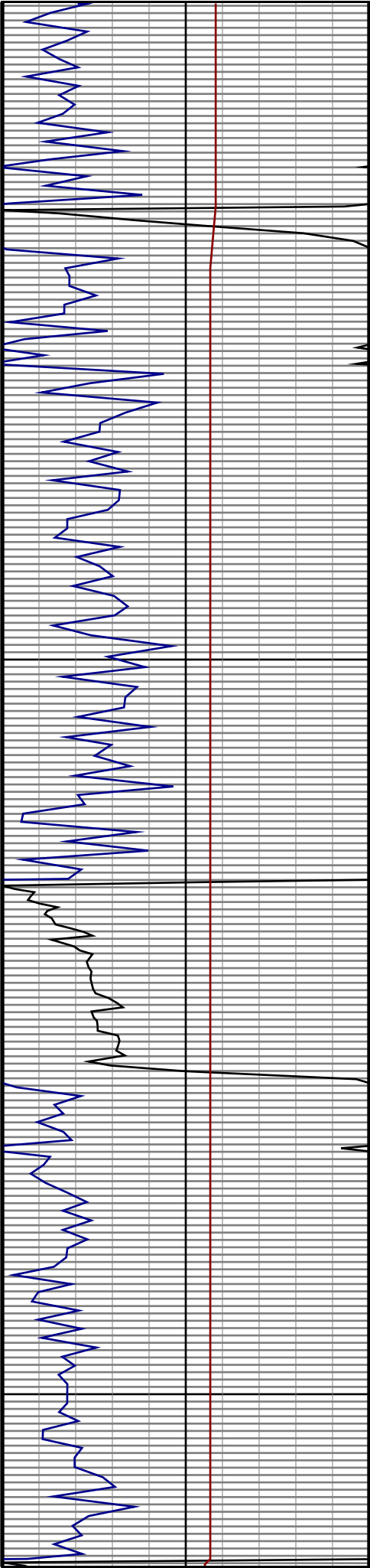
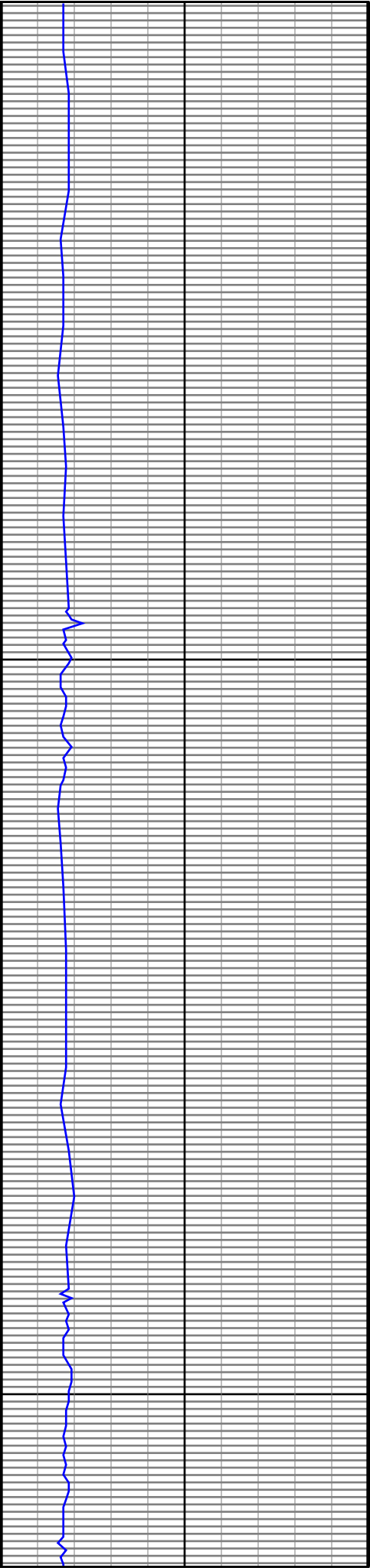


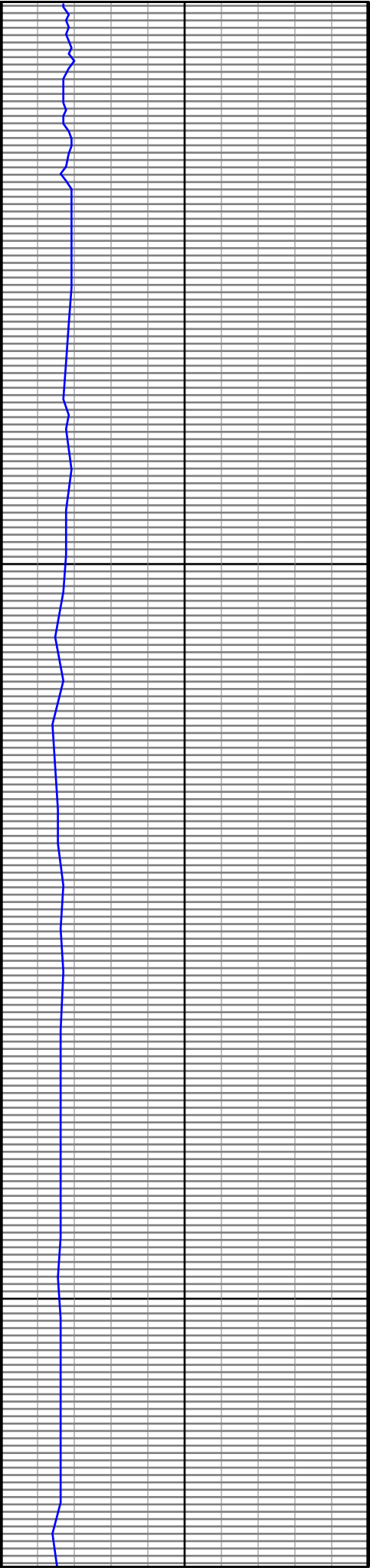
3700

3800



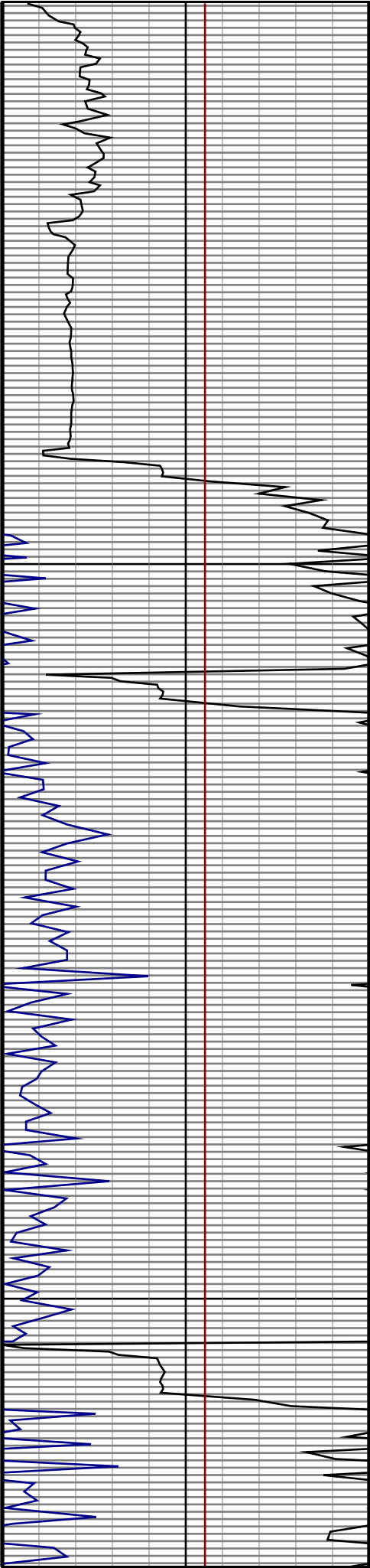


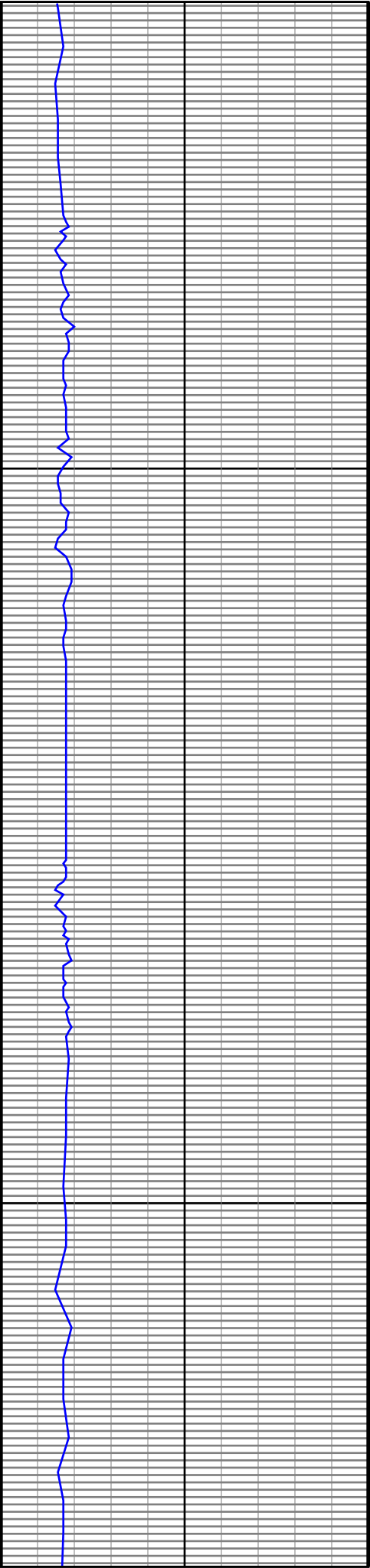




4400

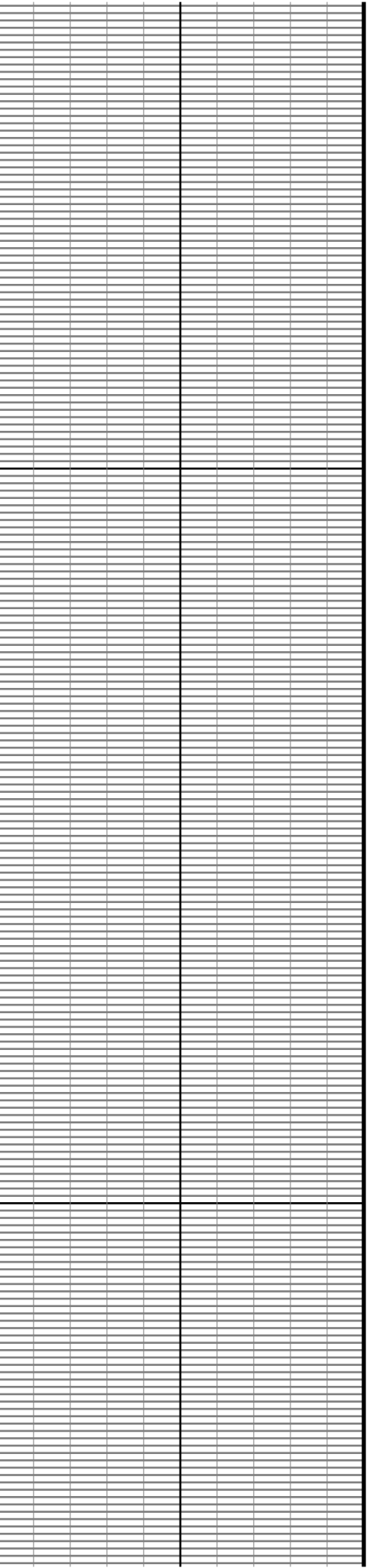
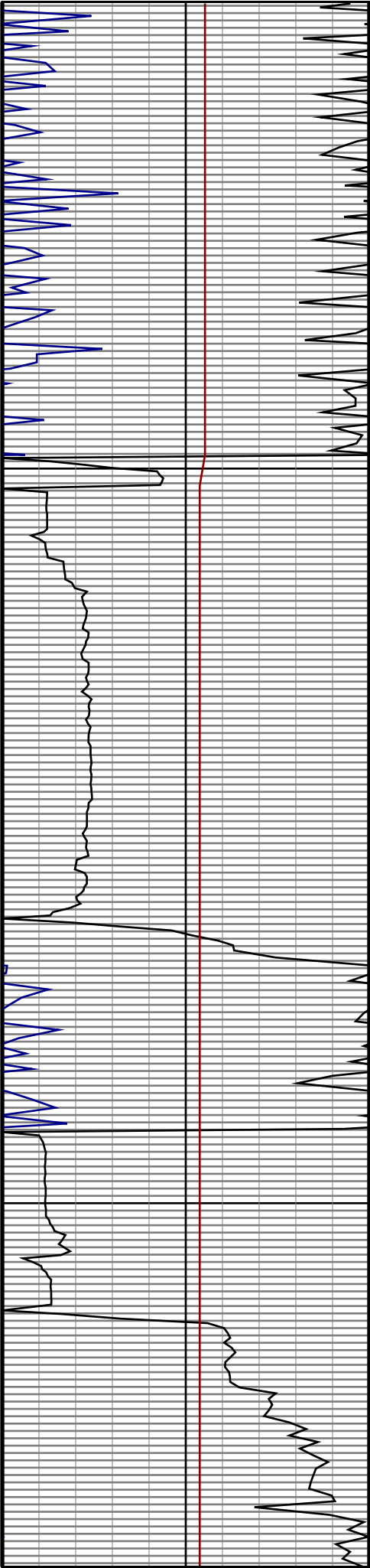
4500

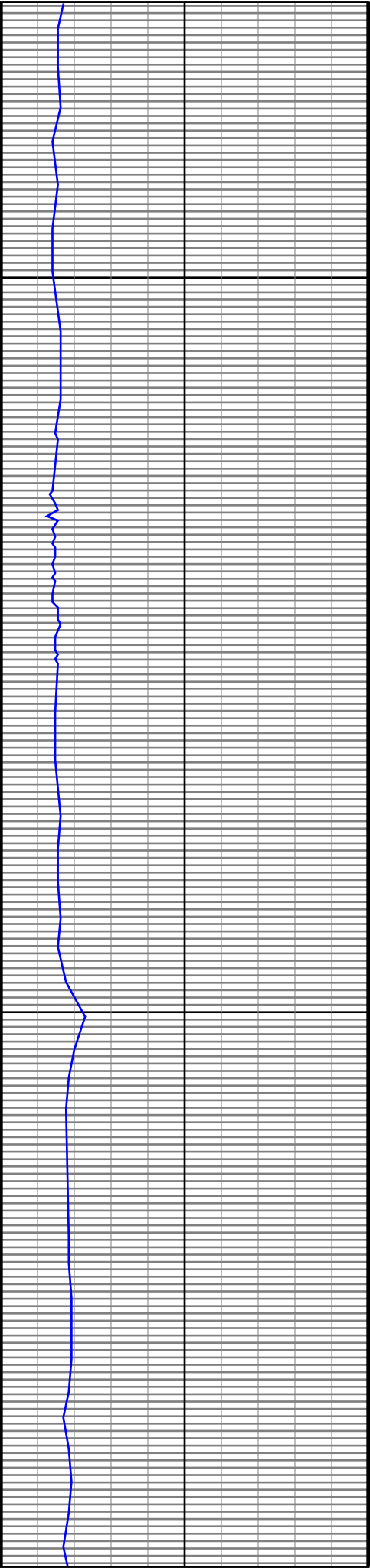




4600

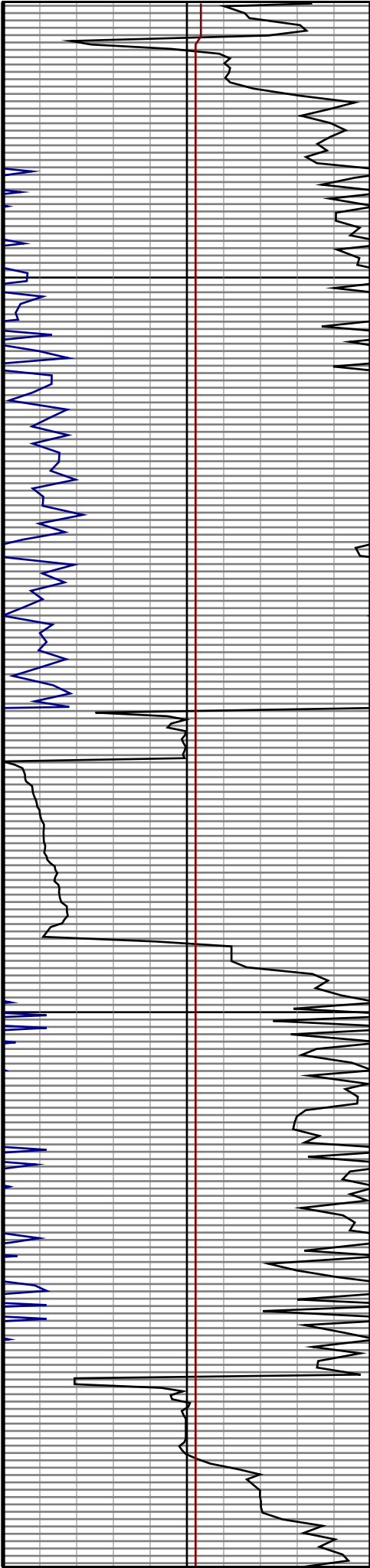
4700

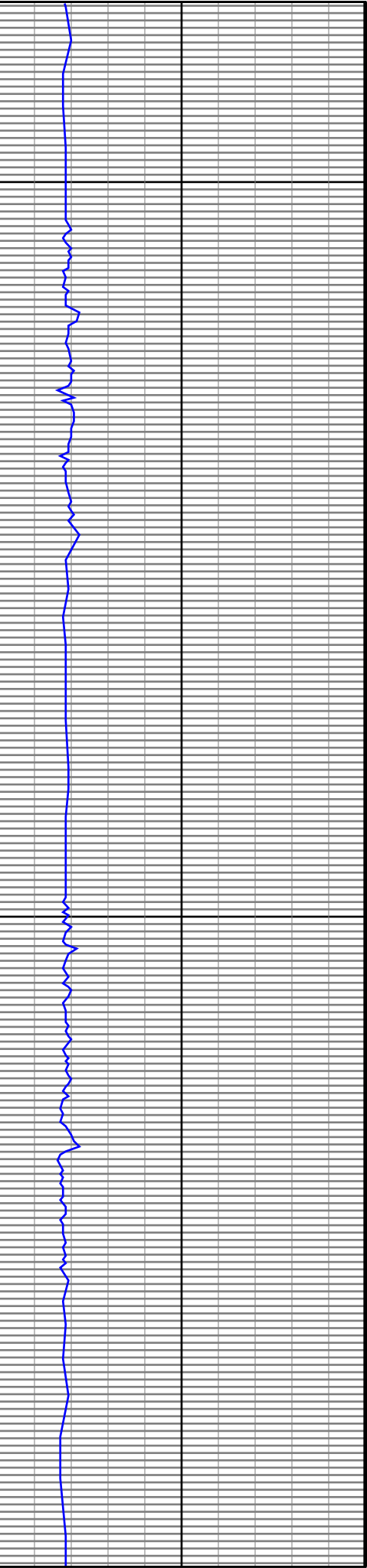




5000

5100

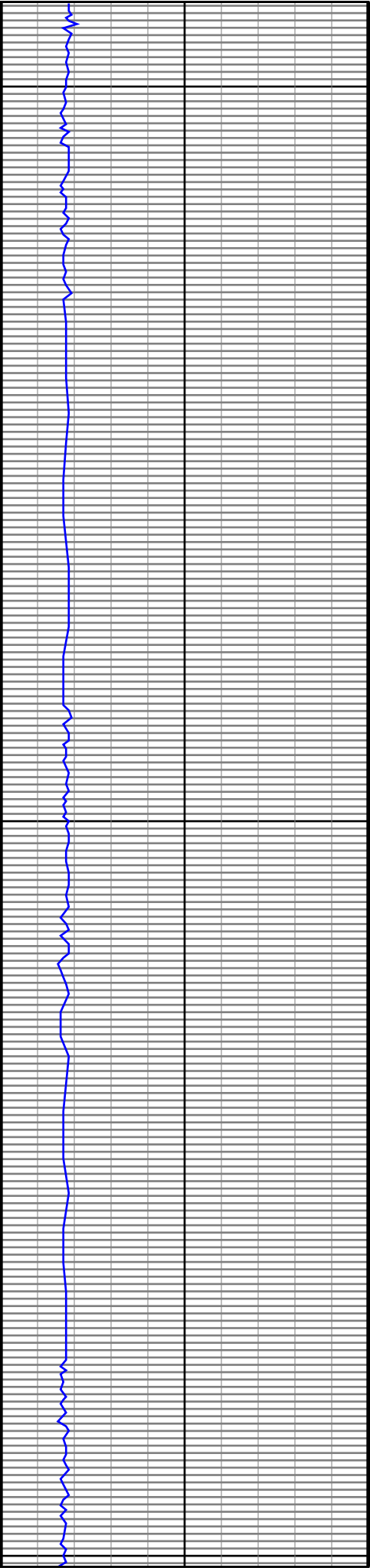




5200

5300

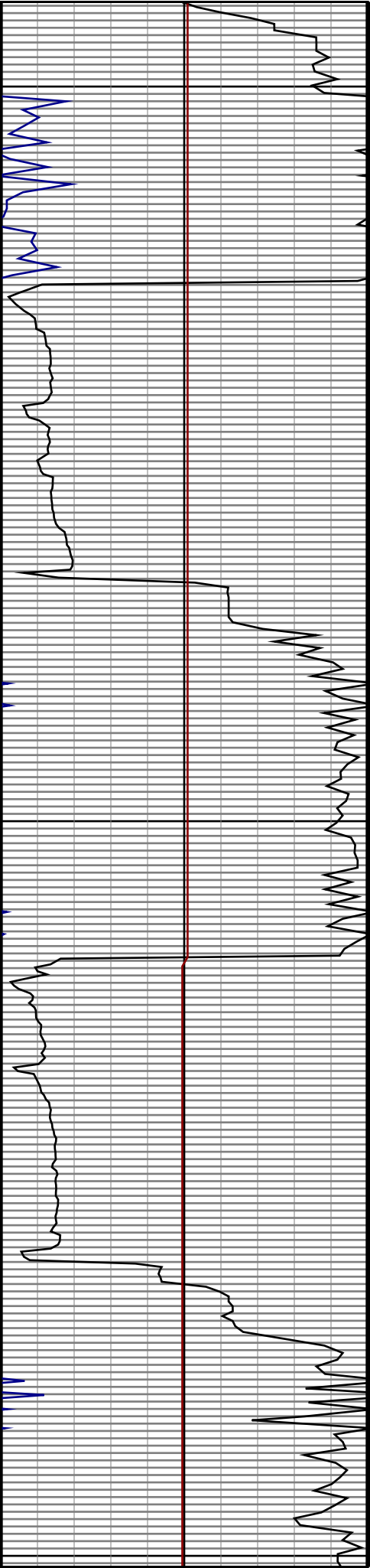


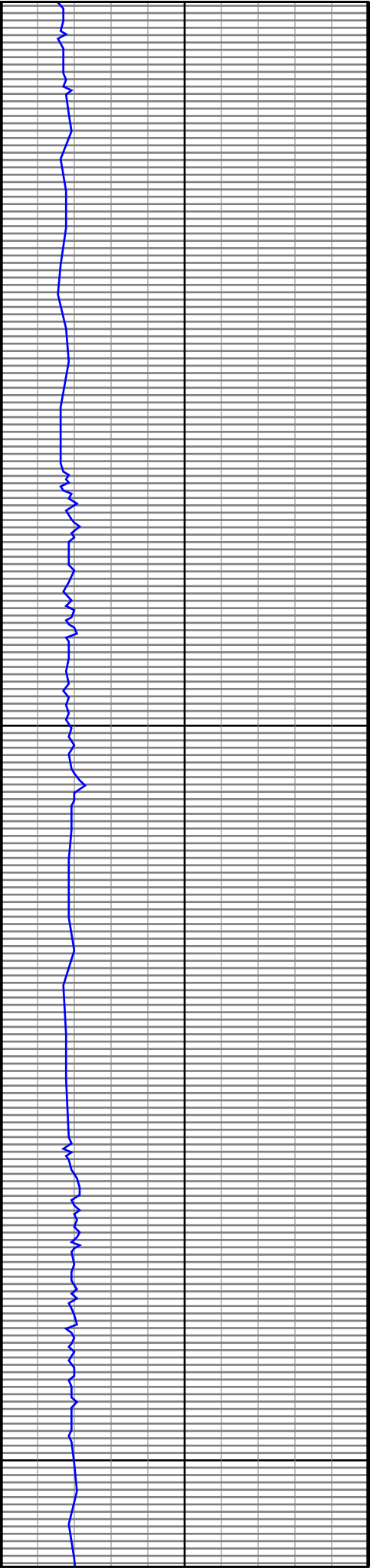


5400

5500

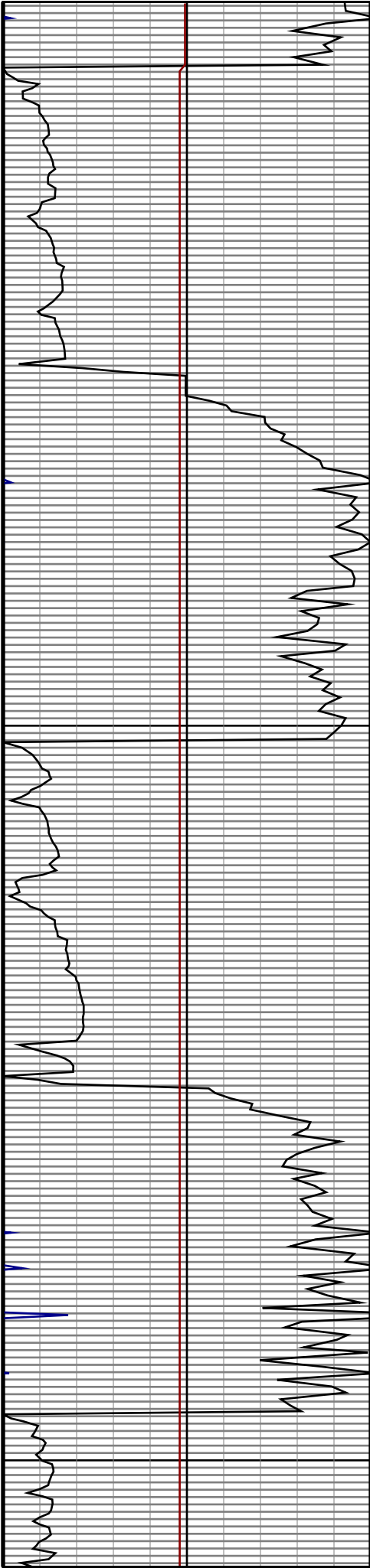
5600

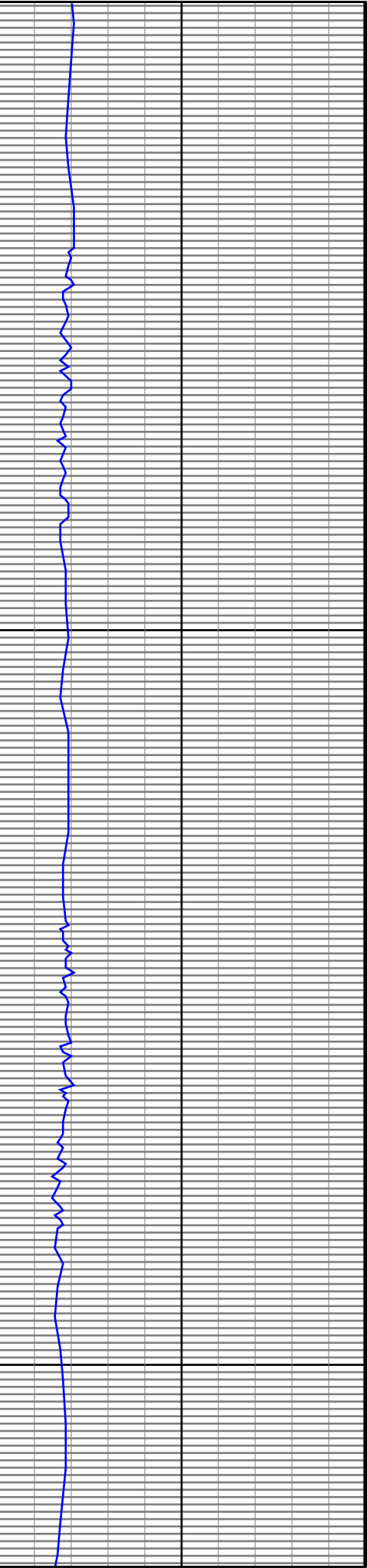




5700

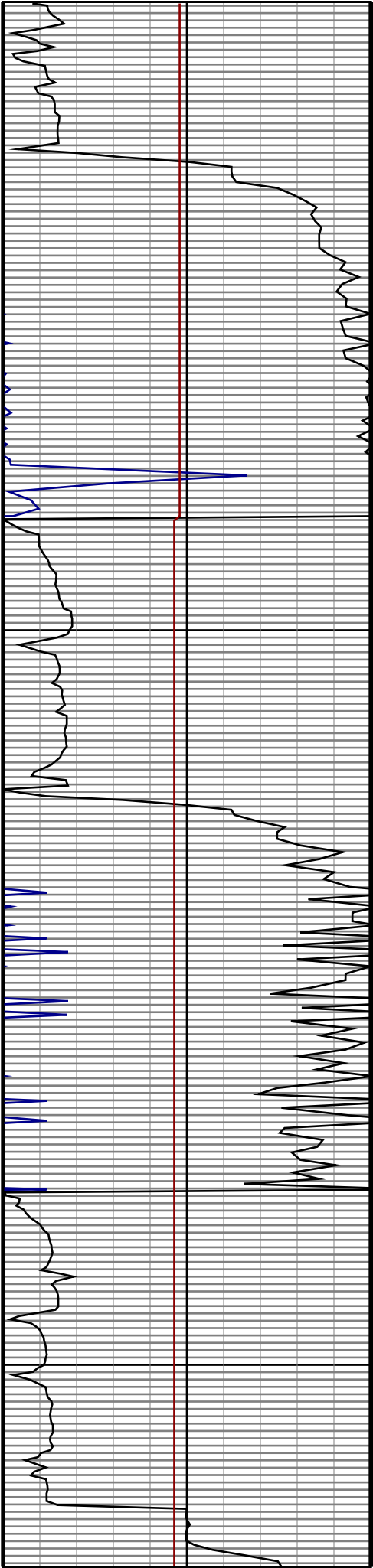
5800

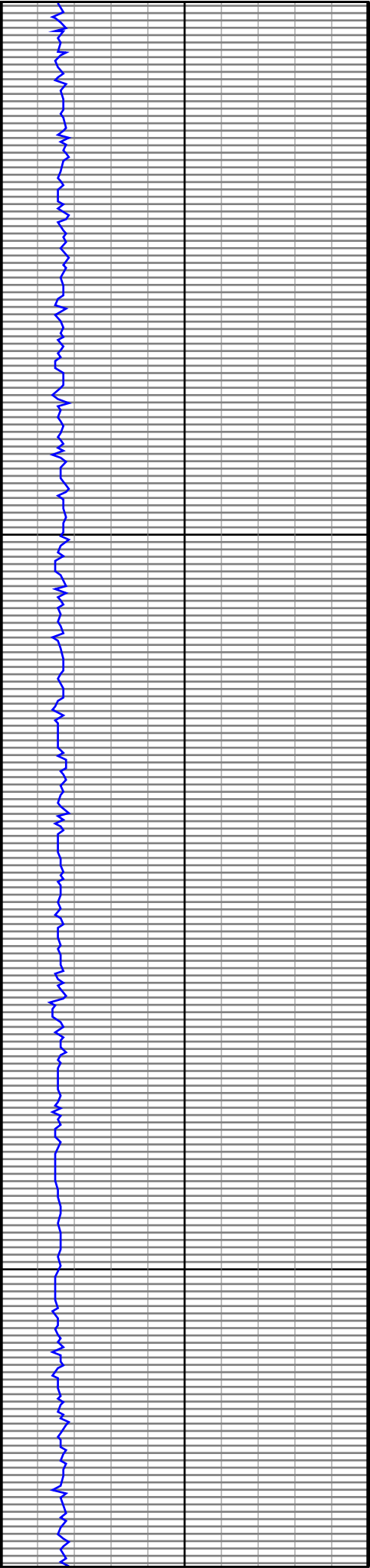




5900

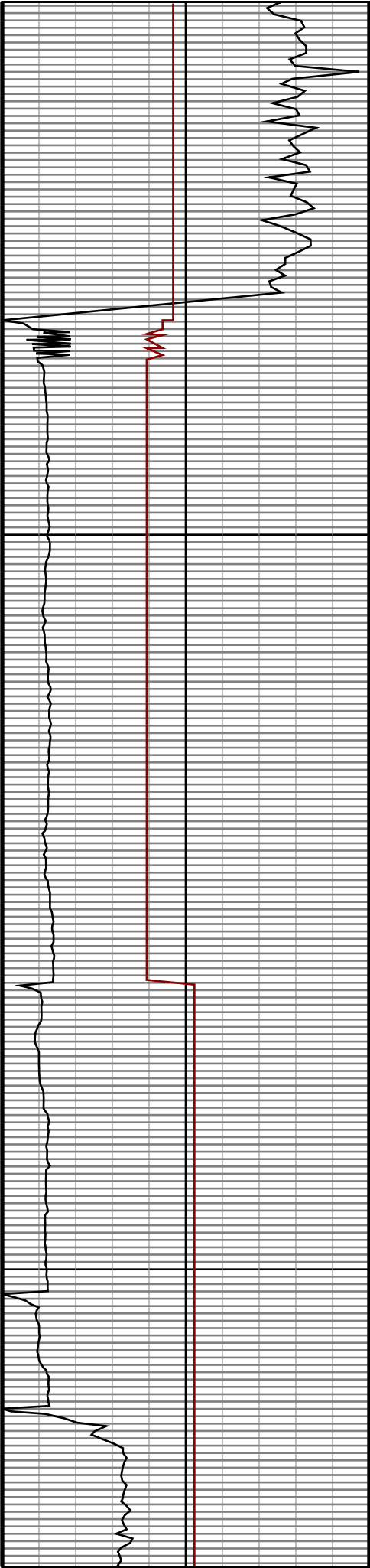
6000

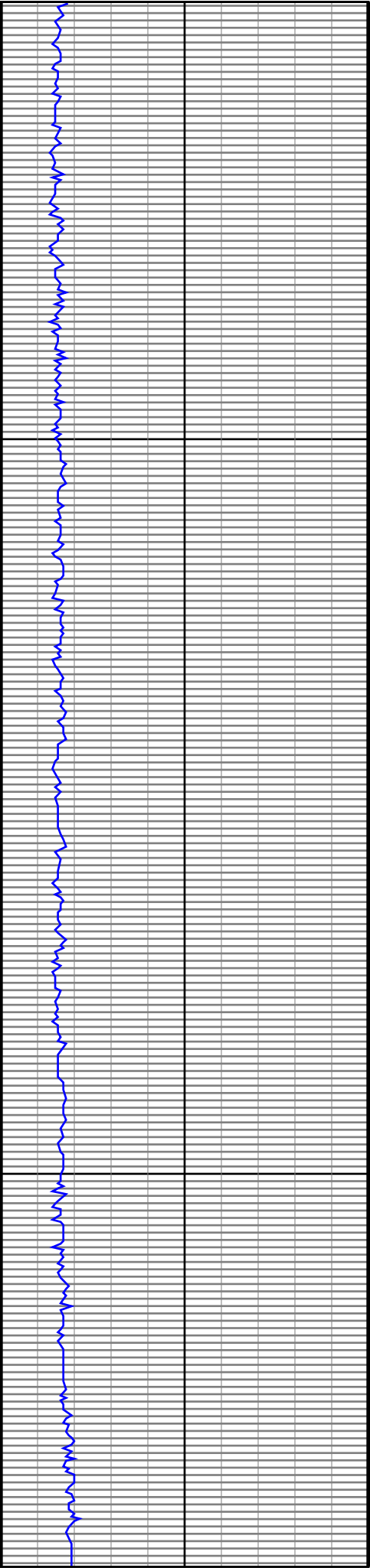




6100

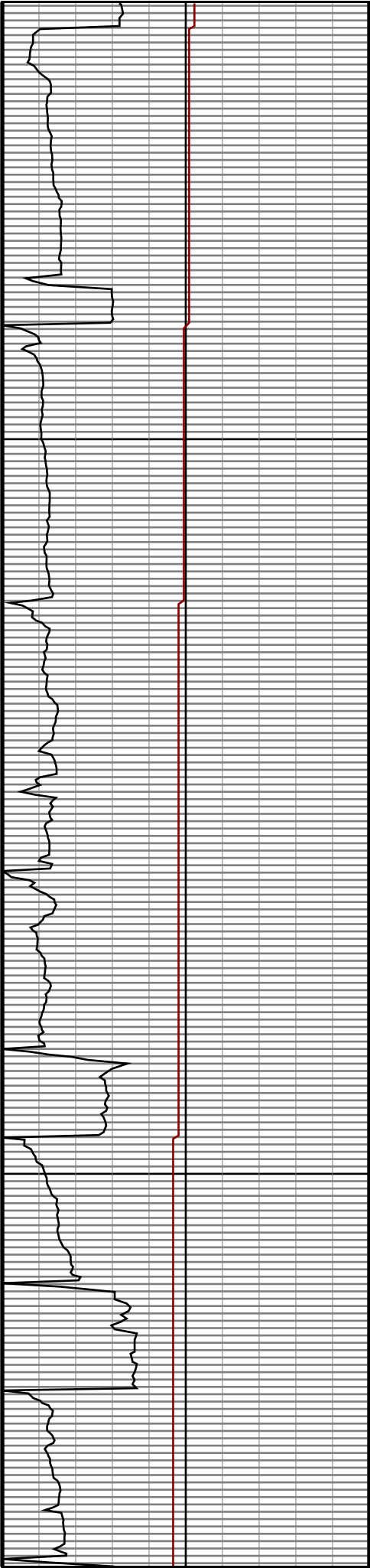
6200

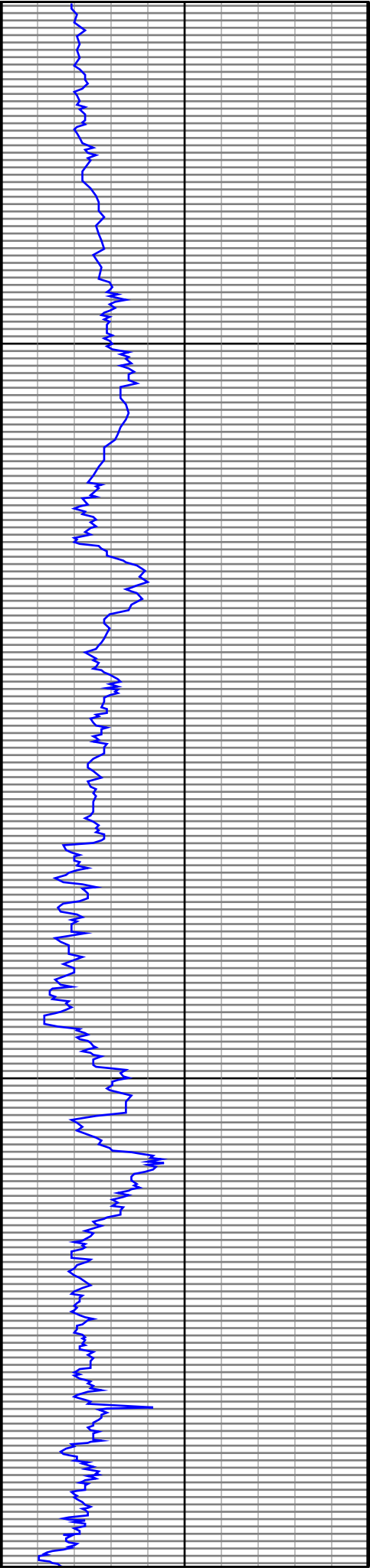




6300

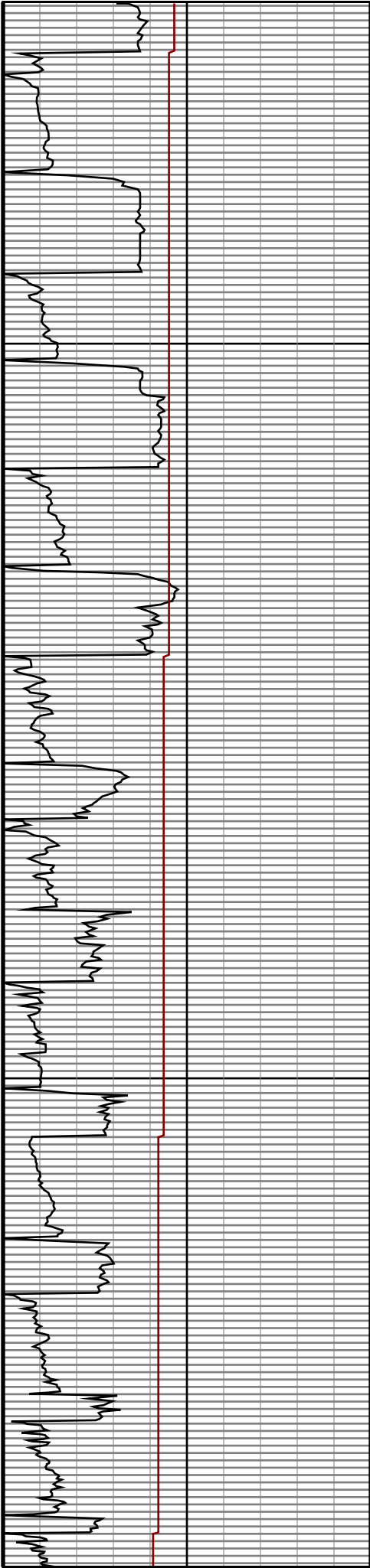
6400

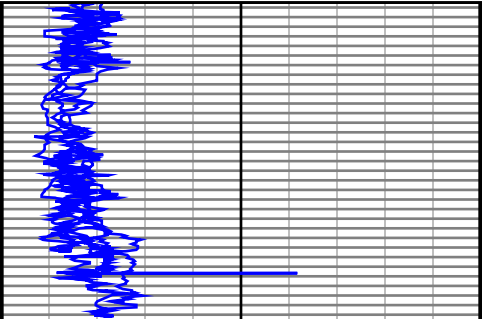




6500

6600





6700

