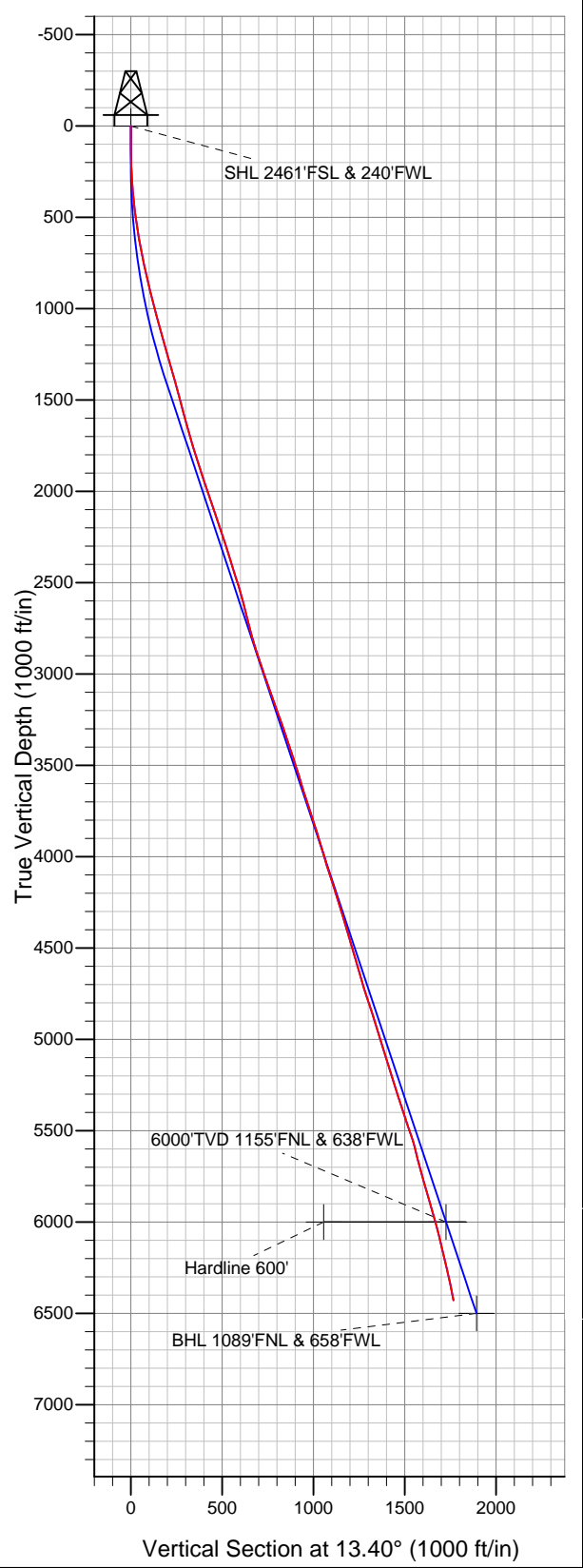




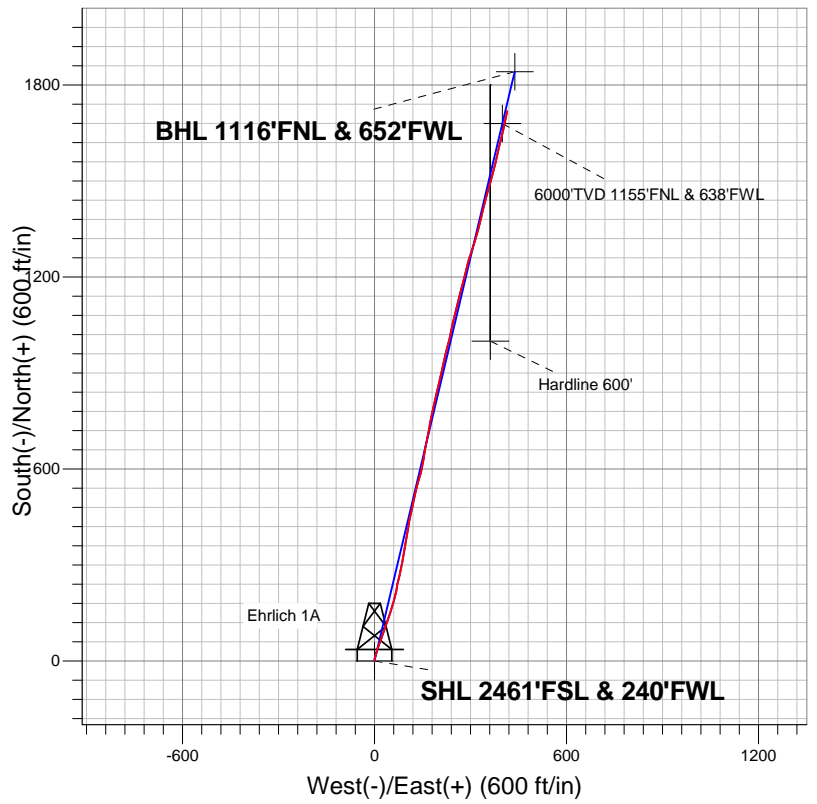
Well Name: Ehrlich 1A

Surface Location: David Bender 1A Pad Sec.12-T4N-R60W
 North American Datum 1983 US State Plane 1983 Colorado Northern Zone
 Ground Elevation: 4462.0

+N/-S	+E/-W	Northing	Easting	Latitude	Longitude	Slot
0.0	0.0	1365150.56	3403057.00	40.326720	-104.054310	
		Est. RKB - 13' WELL @ 4475.0ft (Est. RKB - 13')				



Aurora Power Resources, Inc.



LEGEND

- ▲ Ehrlich 1A, Wellbore #1, Plan #2 (2-18-14) V0
- Wellbore #1
- Survey #1

Final Survey Plot

Projected Final Survey -
 6812'MD & 6552'TVD @ 1795'VS
 11.50 deg Inc 12.00 deg AZ

Project: Sec.12-T4N-R60W
 Site: David Bender 1A Pad Sec.12-T4N-R60W
 Well: Ehrlich 1A
 Plan: Wellbore #1



Aurora Power Resources, Inc.

Sec.12-T4N-R60W

David Bender 1A Pad Sec.12-T4N-R60W

Ehrlich 1A

Wellbore #1

Survey: Survey #1

Standard Survey Report

10 April, 2014

Company:	Aurora Power Resources, Inc.	Local Co-ordinate Reference:	Well Ehrlich 1A
Project:	Sec.12-T4N-R60W	TVD Reference:	WELL @ 4475.0ft (Est. RKB - 13')
Site:	David Bender 1A Pad Sec.12-T4N-R60W	MD Reference:	WELL @ 4475.0ft (Est. RKB - 13')
Well:	Ehrlich 1A	North Reference:	True
Wellbore:	Wellbore #1	Survey Calculation Method:	Minimum Curvature
Design:	Wellbore #1	Database:	Landmark

Project	Sec.12-T4N-R60W, Morgan County, CO		
Map System:	US State Plane 1983	System Datum:	Mean Sea Level
Geo Datum:	North American Datum 1983		Using Well Reference Point
Map Zone:	Colorado Northern Zone		Using geodetic scale factor

Site	David Bender 1A Pad Sec.12-T4N-R60W				
Site Position:		Northing:	1,365,132.68ft	Latitude:	40.326670
From:	Lat/Long	Easting:	3,403,076.82ft	Longitude:	-104.054240
Position Uncertainty:	0.0 ft	Slot Radius:	"	Grid Convergence:	0.93 °

Well	Ehrlich 1A					
Well Position	+N/-S	0.0 ft	Northing:	1,365,150.56 ft	Latitude:	40.326720
	+E/-W	0.0 ft	Easting:	3,403,057.00 ft	Longitude:	-104.054310
Position Uncertainty		0.0 ft	Wellhead Elevation:	ft	Ground Level:	4,462.0 ft

Wellbore	Wellbore #1				
Magnetics	Model Name	Sample Date	Declination (°)	Dip Angle (°)	Field Strength (nT)
	IGRF2010	2/18/2014	8.11	67.01	52,887

Design	Wellbore #1				
Audit Notes:					
Version:	1.0	Phase:	ACTUAL	Tie On Depth:	0.0
Vertical Section:	Depth From (TVD) (ft)	+N/-S (ft)	+E/-W (ft)	Direction (°)	
	0.0	0.0	0.0	13.40	

Survey Program	Date	4/10/2014			
From (ft)	To (ft)	Survey (Wellbore)	Tool Name	Description	
124.0	6,685.0	Survey #1 (Wellbore #1)	MWD	MWD - Standard	

Survey										
Measured Depth (ft)	Inclination (°)	Azimuth (°)	Vertical Depth (ft)	+N/-S (ft)	+E/-W (ft)	Vertical Section (ft)	Dogleg Rate (°/100ft)	Build Rate (°/100ft)	Turn Rate (°/100ft)	
0.0	0.00	0.00	0.0	0.0	0.0	0.0	0.00	0.00	0.00	
1.0	0.01	0.60	1.0	0.0	0.0	0.0	0.73	0.73	0.00	
SHL 2461'FSL & 240'FWL										
124.0	0.90	0.60	124.0	1.0	0.0	0.9	0.73	0.73	0.00	
211.0	1.50	12.00	211.0	2.8	0.3	2.8	0.74	0.69	13.10	
296.0	3.20	4.50	295.9	6.2	0.7	6.2	2.03	2.00	-8.82	
388.0	5.60	17.50	387.6	13.1	2.2	13.2	2.81	2.61	14.13	
478.0	7.70	16.20	477.0	23.0	5.2	23.6	2.34	2.33	-1.44	
576.0	9.00	17.10	574.0	36.7	9.3	37.8	1.33	1.33	0.92	
668.0	10.90	21.20	664.6	51.7	14.6	53.6	2.20	2.07	4.46	
760.0	13.10	19.90	754.6	69.6	21.3	72.6	2.41	2.39	-1.41	
854.0	12.90	19.90	846.2	89.5	28.5	93.6	0.21	-0.21	0.00	
949.0	13.50	18.90	938.7	109.9	35.7	115.2	0.68	0.63	-1.05	

Company:	Aurora Power Resources, Inc.	Local Co-ordinate Reference:	Well Ehrlich 1A
Project:	Sec.12-T4N-R60W	TVD Reference:	WELL @ 4475.0ft (Est. RKB - 13')
Site:	David Bender 1A Pad Sec.12-T4N-R60W	MD Reference:	WELL @ 4475.0ft (Est. RKB - 13')
Well:	Ehrlich 1A	North Reference:	True
Wellbore:	Wellbore #1	Survey Calculation Method:	Minimum Curvature
Design:	Wellbore #1	Database:	Landmark

Survey										
Measured Depth (ft)	Inclination (°)	Azimuth (°)	Vertical Depth (ft)	+N/-S (ft)	+E/-W (ft)	Vertical Section (ft)	Dogleg Rate (°/100ft)	Build Rate (°/100ft)	Turn Rate (°/100ft)	
1,042.0	14.70	19.20	1,028.8	131.3	43.1	137.7	1.29	1.29	0.32	
1,136.0	15.70	16.90	1,119.6	154.8	50.7	162.3	1.24	1.06	-2.45	
1,231.0	16.90	17.30	1,210.7	180.3	58.5	188.9	1.27	1.26	0.42	
1,326.0	15.90	13.20	1,301.9	206.1	65.6	215.7	1.61	-1.05	-4.32	
1,420.0	15.20	7.60	1,392.4	230.9	70.2	240.8	1.76	-0.74	-5.96	
1,514.0	14.80	15.90	1,483.2	254.6	75.1	265.1	2.32	-0.43	8.83	
1,609.0	15.20	12.00	1,575.0	278.5	81.0	289.7	1.14	0.42	-4.11	
1,703.0	15.70	9.60	1,665.6	303.1	85.7	314.7	0.86	0.53	-2.55	
1,798.0	16.70	10.10	1,756.8	329.2	90.2	341.1	1.06	1.05	0.53	
1,892.0	17.50	10.80	1,846.7	356.4	95.2	368.7	0.88	0.85	0.74	
1,986.0	19.00	8.70	1,936.0	385.4	100.2	398.1	1.74	1.60	-2.23	
2,080.0	18.30	9.40	2,025.0	415.1	104.9	428.1	0.78	-0.74	0.74	
2,175.0	19.40	12.40	2,114.9	445.2	110.8	458.7	1.54	1.16	3.16	
2,269.0	18.70	12.00	2,203.8	475.2	117.2	489.4	0.76	-0.74	-0.43	
2,364.0	18.00	11.70	2,293.9	504.4	123.4	519.3	0.74	-0.74	-0.32	
2,457.0	17.00	12.40	2,382.6	531.8	129.2	547.3	1.10	-1.08	0.75	
2,552.0	18.00	16.20	2,473.2	559.5	136.3	575.8	1.60	1.05	4.00	
2,646.0	16.00	16.40	2,563.1	585.8	144.0	603.3	2.13	-2.13	0.21	
2,740.0	13.80	10.10	2,654.0	609.3	149.6	627.4	2.90	-2.34	-6.70	
2,835.0	14.10	8.90	2,746.2	631.9	153.4	650.2	0.44	0.32	-1.26	
2,928.0	17.10	9.20	2,835.7	656.6	157.4	675.2	3.23	3.23	0.32	
3,023.0	18.40	11.80	2,926.2	685.0	162.7	704.1	1.60	1.37	2.74	
3,116.0	19.30	11.10	3,014.2	714.5	168.6	734.1	1.00	0.97	-0.75	
3,211.0	20.20	9.40	3,103.6	746.1	174.3	766.2	1.12	0.95	-1.79	
3,304.0	19.50	13.60	3,191.1	777.0	180.6	797.7	1.71	-0.75	4.52	
3,399.0	19.20	12.50	3,280.7	807.7	187.7	829.2	0.50	-0.32	-1.16	
3,494.0	18.30	12.90	3,370.7	837.5	194.4	859.7	0.96	-0.95	0.42	
3,588.0	18.30	13.40	3,460.0	866.2	201.1	889.2	0.17	0.00	0.53	
3,683.0	17.10	11.70	3,550.5	894.4	207.4	918.1	1.38	-1.26	-1.79	
3,777.0	17.30	13.20	3,640.3	921.5	213.4	945.9	0.52	0.21	1.60	
3,870.0	18.00	13.80	3,728.9	949.0	220.0	974.1	0.78	0.75	0.65	
3,965.0	18.40	14.00	3,819.1	977.8	227.1	1,003.8	0.43	0.42	0.21	
4,060.0	16.50	13.20	3,909.7	1,005.4	233.8	1,032.3	2.02	-2.00	-0.84	
4,154.0	16.60	12.70	3,999.8	1,031.5	239.8	1,059.0	0.19	0.11	-0.53	
4,249.0	17.80	11.70	4,090.6	1,059.0	245.8	1,087.1	1.30	1.26	-1.05	
4,343.0	18.30	13.60	4,180.0	1,087.4	252.1	1,116.2	0.82	0.53	2.02	
4,436.0	16.10	15.50	4,268.8	1,114.0	259.0	1,143.7	2.44	-2.37	2.04	
4,531.0	17.10	13.40	4,359.9	1,140.3	265.8	1,170.9	1.23	1.05	-2.21	
4,626.0	16.30	15.20	4,450.8	1,166.8	272.5	1,198.2	1.00	-0.84	1.89	
4,719.0	16.50	14.80	4,540.1	1,192.1	279.3	1,224.4	0.25	0.22	-0.43	
4,813.0	15.90	13.10	4,630.3	1,217.6	285.6	1,250.6	0.81	-0.64	-1.81	
4,908.0	17.30	15.20	4,721.4	1,243.9	292.3	1,277.8	1.60	1.47	2.21	
5,001.0	18.90	18.30	4,809.8	1,271.5	300.6	1,306.6	2.01	1.72	3.33	
5,096.0	17.10	18.70	4,900.1	1,299.4	309.9	1,335.8	1.90	-1.89	0.42	
5,190.0	17.40	14.70	4,989.9	1,326.1	317.9	1,363.6	1.30	0.32	-4.26	
5,284.0	17.60	14.80	5,079.5	1,353.4	325.1	1,391.9	0.22	0.21	0.11	
5,378.0	16.00	15.00	5,169.5	1,379.6	332.1	1,419.1	1.70	-1.70	0.21	
5,472.0	18.60	12.40	5,259.3	1,406.8	338.7	1,447.0	2.89	2.77	-2.77	
5,567.0	18.20	14.10	5,349.4	1,436.0	345.6	1,477.0	0.70	-0.42	1.79	
5,662.0	18.70	15.90	5,439.5	1,465.0	353.4	1,507.0	0.80	0.53	1.89	
5,756.0	17.80	16.60	5,528.8	1,493.3	361.6	1,536.4	0.99	-0.96	0.74	
5,850.0	14.80	14.50	5,619.0	1,518.7	368.7	1,562.8	3.25	-3.19	-2.23	
5,944.0	13.50	15.00	5,710.2	1,540.9	374.5	1,585.8	1.39	-1.38	0.53	
6,038.0	16.40	12.20	5,801.0	1,564.5	380.2	1,610.0	3.18	3.09	-2.98	

Company:	Aurora Power Resources, Inc.	Local Co-ordinate Reference:	Well Ehrlich 1A
Project:	Sec.12-T4N-R60W	TVD Reference:	WELL @ 4475.0ft (Est. RKB - 13')
Site:	David Bender 1A Pad Sec.12-T4N-R60W	MD Reference:	WELL @ 4475.0ft (Est. RKB - 13')
Well:	Ehrlich 1A	North Reference:	True
Wellbore:	Wellbore #1	Survey Calculation Method:	Minimum Curvature
Design:	Wellbore #1	Database:	Landmark

Survey										
Measured Depth (ft)	Inclination (°)	Azimuth (°)	Vertical Depth (ft)	+N/-S (ft)	+E/-W (ft)	Vertical Section (ft)	Dogleg Rate (°/100ft)	Build Rate (°/100ft)	Turn Rate (°/100ft)	
6,070.1	16.54	12.27	5,831.7	1,573.4	382.1	1,619.1	0.43	0.42	0.21	
Hardline 600'										
6,133.0	16.80	12.40	5,892.0	1,591.0	386.0	1,637.1	0.43	0.42	0.21	
6,227.0	16.00	14.10	5,982.2	1,616.8	392.0	1,663.7	0.99	-0.85	1.81	
6,260.1	15.04	14.16	6,014.1	1,625.4	394.2	1,672.5	2.90	-2.90	0.19	
6000'TVD 1155'FNL & 638'FWL										
6,320.0	13.30	14.30	6,072.1	1,639.6	397.8	1,687.2	2.90	-2.90	0.23	
6,414.0	13.50	11.50	6,163.6	1,660.9	402.7	1,709.0	0.72	0.21	-2.98	
6,685.0	11.50	12.00	6,428.1	1,718.3	414.6	1,767.6	0.74	-0.74	0.18	
BHL 993'FNL & 676'FWL										

Checked By: _____ Approved By: _____ Date: _____