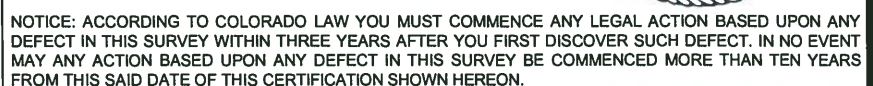
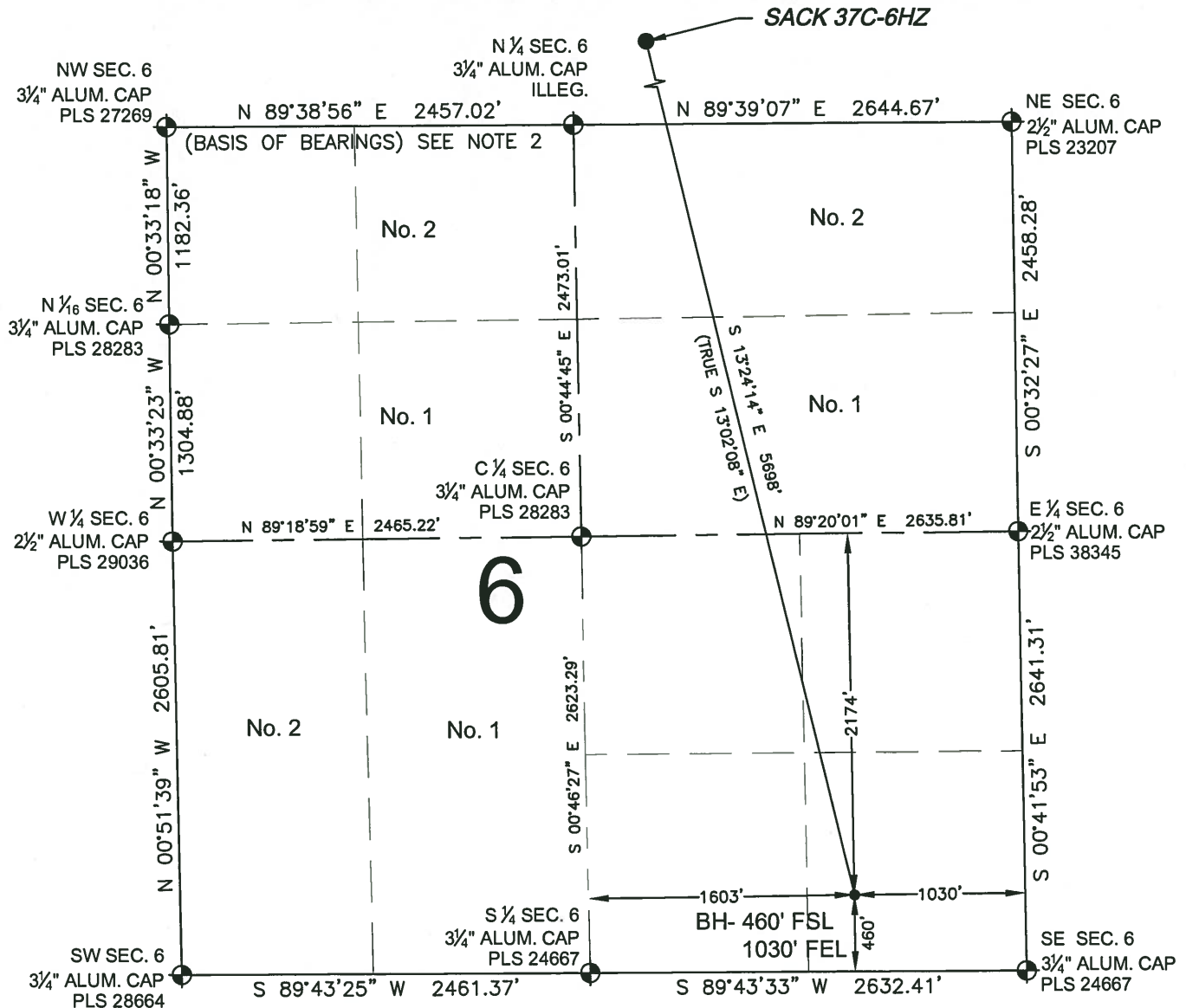


SECTION 31, TOWNSHIP 1 NORTH, RANGE 67 WEST, 6TH P.M.



WELL LOCATION CERTIFICATE: SACK 37C-6HZ

SECTION 6, TOWNSHIP 1 SOUTH, RANGE 67 WEST, 6TH P.M.



LEGEND

- ⊙ = EXISTING MONUMENT
- ⬤ = PROPOSED WELL
- BH = BOTTOM HOLE
- ⬥ = BOTTOM HOLE
- ◆ = EXISTING WELL

NOTES:

1. THIS FIELD SURVEY CONFORMS TO THE MINIMUM STANDARDS SET BY THE C.O.G.C.C., RULE NO. 215
2. BEARINGS AND DISTANCE SHOWN HEREON ARE GRID AND BASED ON THE COLORADO STATE PLANE COORDINATE SYSTEM, NAD 83/2011 BETWEEN MONUMENTS AS LABELED HEREON AND ELEVATIONS SHOWN ARE NAVD 88, AS DERIVED BY GPS OBSERVATIONS.
3. GRID DISTANCES ARE SHOWN, AS MEASURED IN THE FIELD, WITH TIES TO WELLS MEASURED PERPENDICULAR TO SECTION LINES.



BRADLEY L. LAMAN, PLS 38345
COLORADO LICENSED PROFESSIONAL LAND SURVEYOR
FOR AND ON BEHALF OF P.F.S., LLC

SHEET 2 OF 2

PREPARED BY:



FIELD DATE:

08-01-13

DRAWING DATE:

08-05-13

BY:

CLM

REV:

CPO

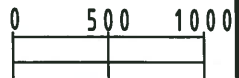
SURFACE LOCATION:

SW 1/4 SE 1/4,

SEC. 31, T1N, R67W, 6TH P.M.

WELD COUNTY, COLORADO

NOTICE: ACCORDING TO COLORADO LAW YOU MUST COMMENCE ANY LEGAL ACTION BASED UPON ANY DEFECT IN THIS SURVEY WITHIN THREE YEARS AFTER YOU FIRST DISCOVER SUCH DEFECT. IN NO EVENT MAY ANY ACTION BASED UPON ANY DEFECT IN THIS SURVEY BE COMMENCED MORE THAN TEN YEARS FROM THIS SAID DATE OF THIS CERTIFICATION SHOWN HEREON.



SCALE: 1"=1000'