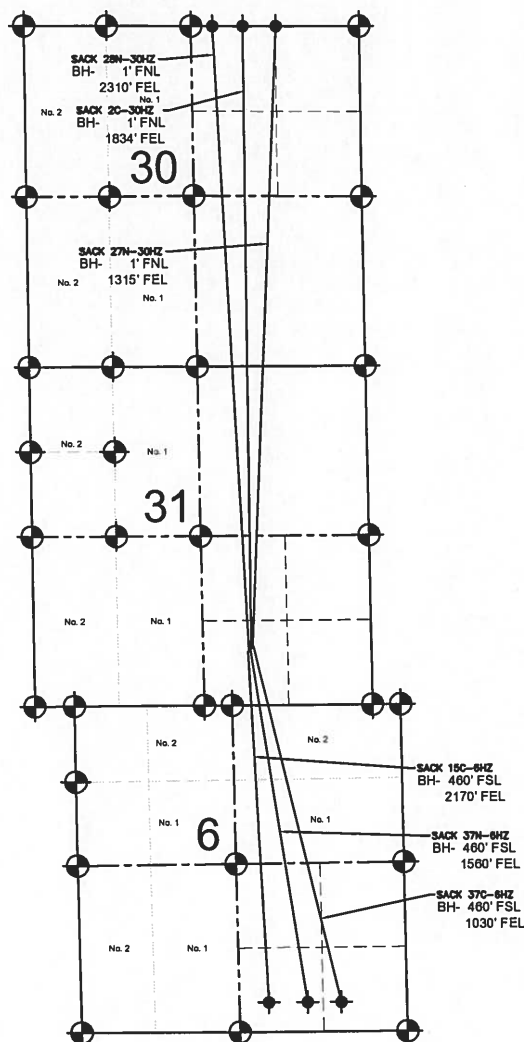


SACK 37N-6HZ MULTI-WELL PLAN

SECTION 31, TOWNSHIP 1 NORTH, RANGE 67 WEST, 6TH P.M.



NOTES:

SACK 15C-6HZ TO BE AT 831' FSL, 1942' FEL.
 BOTTOM HOLE AT 460' FSL & 2170' FEL, SEC. 6.
 SACK 28N-30HZ TO BE AT 847' FSL, 1924' FEL.
 BOTTOM HOLE AT 1' FNL & 2310' FEL, SEC. 30.
 SACK 37N-6HZ TO BE AT 863' FSL, 1907' FEL.
 BOTTOM HOLE AT 460' FNL & 1560' FEL, SEC. 6.
 SACK 2C-30HZ TO BE AT 880' FSL, 1889' FEL.
 BOTTOM HOLE AT 1' FNL & 1834' FEL, SEC. 30.
 SACK 27N-30HZ TO BE AT 896' FSL, 1871' FEL.
 BOTTOM HOLE AT 1' FNL & 1315' FEL, SEC. 30.
 SACK 37C-6HZ TO BE AT 912' FSL, 1854' FEL.
 BOTTOM HOLE AT 460' FNL & 1030' FEL, SEC. 6.

LEGEND

= EXISTING MONUMENT
 = BOTTOM HOLE
 BH= BOTTOM HOLE
 = PROPOSED WELL
 = EXISTING WELL

PREPARED BY:



KERR-MCGEE OIL & GAS ONSHORE LP

FIELD DATE:
08-01-13

DRAWING DATE:
08-05-13

SURFACE LOCATION:

SW 1/4 SE 1/4, SEC. 31, T1N, R67W, 6TH P.M.
 WELD COUNTY, COLORADO

