

**ANADARKO PETROLEUM CORP - EBUS
DO NOT MAIL - PO BOX 4995
THE WOODLANDS, Texas**

Howard 38C-33HZ

MAJORS 42

Post Job Summary **Cement Surface Casing**

Prepared for:
Date Prepared: 10/12/2013
Version: 1

Service Supervisor: MCBRIDE, NATHAN

Submitted by: FINNEY, SEAN

HALLIBURTON

Wellbore Geometry

Job Tubulars					MD		Shoe Joint Length ft
Type	Description	Size in	ID in	Wt lbm/ft	Top ft	Bottom ft	
Casing	9 5/8" Surface Casing	9.63	8.921	36.00	0.00	1,075.00	42.00
Open Hole Section	13 1/2" Open Hole Section		13.500		0.00	1,075.00	0.00

HALLIBURTON

Pumping Schedule

Stage /Plug #	Fluid #	Fluid Type	Fluid Name	Surface Density lbm/gal	Avg Rate bbl/min	Surface Volume	Downhole Volume
1	1	Spacer	Fresh Water Spacer	8.33	3.00	10.0 bbl	10.0 bbl
1	2	Spacer	Mud Flush	8.40	3.00	12.0 bbl	12.0 bbl
1	3	Cement Slurry	SwiftCem B2	14.20	5.00	436.0 sacks	436.0 sacks

Fluids Pumped

Stage/Plug # 1 Fluid 1: Fresh Water Spacer
DUMMY MUD / FLUSH / SPACER SBC MATERIAL

Fluid Density: 8.33 lbm/gal
Fluid Volume: 10.00 bbl
Pump Rate: 3.00 bbl/min

Stage/Plug # 1 Fluid 2: Mud Flush
DUMMY MUD / FLUSH / SPACER SBC MATERIAL
3.33 lbm/bbl Mud Flush III
42 gal/bbl Mud Flush III

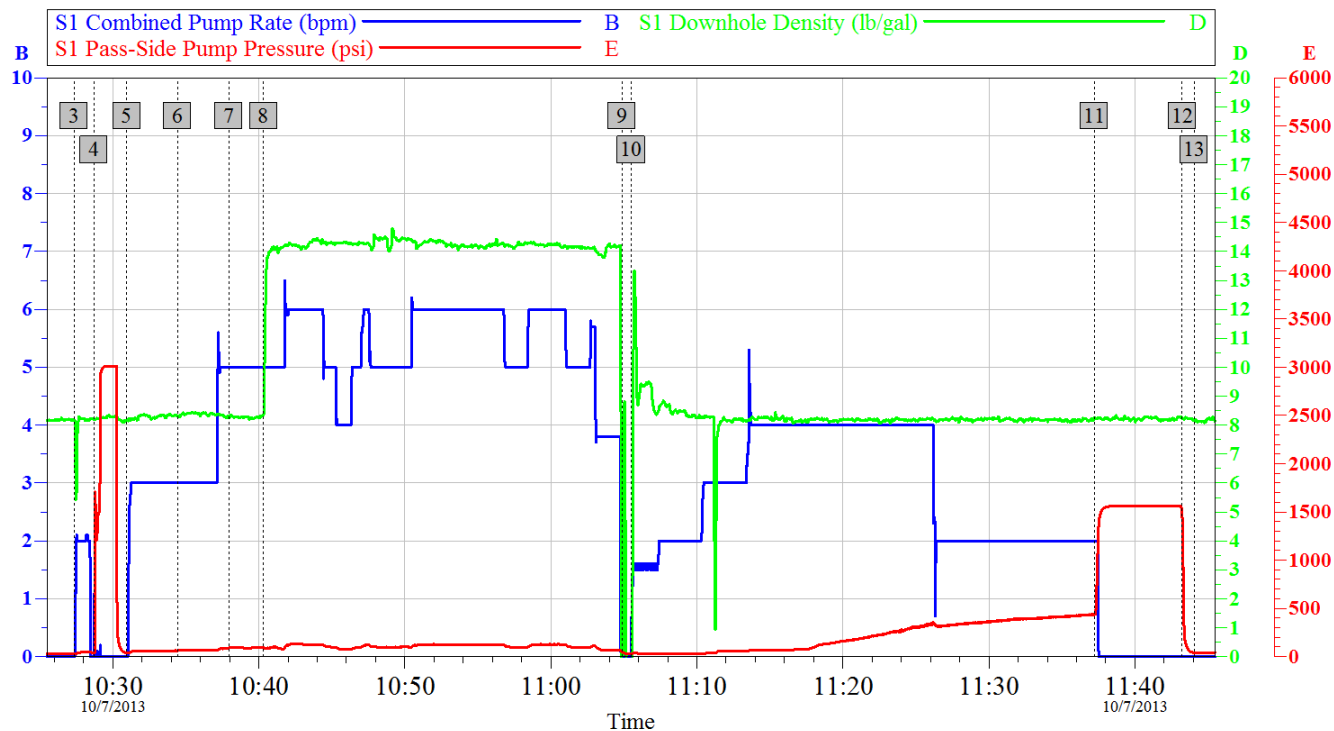
Fluid Density: 8.40 lbm/gal
Fluid Volume: 12.00 bbl
Pump Rate: 3.00 bbl/min

Stage/Plug # 1 Fluid 3: SwiftCem B2
SWIFTCM (TM) SYSTEM

Fluid Weight: 14.20 lbm/gal
Slurry Yield: 1.54 ft³/sack
Total Mixing Fluid: 7.63 Gal
Surface Volume: 436.0 sacks
Sacks: 436.0 sacks
Calculated Fill: 900.00 ft
Calculated Top of Fluid: 0.00 ft

HALLIBURTON

Data Acquisition



Global Event Log

3	Fill Lines	10:27:20	4	Test Lines	10:28:42	5	Fresh Water Ahead	10:30:56
6	Mud Flush	10:34:26	7	Fresh Water	10:37:56	8	Pump Lead Cement	10:40:18
9	Shutdown Drop Plug	11:04:51	10	Fresh Water Displacement	11:05:30	11	Bump Plug	11:37:14
12	Check Floats	11:43:14	13	End Job	11:44:02			

Customer: Anadarko
Well Description: Howard 38C-33HZ

Job Date: 07-Oct-2013
Job Type: Surface

Sales Order #: 900802954
Supervisor: McBride

OptiCem v6.4.10
07-Oct-13 11:48

Service Supervisor Reports

Job Log

Date/Time	Chart #	Activity Code	Pump Rate	Cum Vol	Pump	Pressure (psig)	Comments
10/07/2013 08:30		Arrive at Location from Service Center					All equipment and materials on location Rig Running Casing
10/07/2013 08:35		Assessment Of Location Safety Meeting					Hazard Hunt and review fluid location, wash up and truck layout
10/07/2013 08:40		Pre-Rig Up Safety Meeting					
10/07/2013 08:50		Rig-Up Equipment					
10/07/2013 09:25		Casing on Bottom					
10/07/2013 09:30		Rig-Up Completed					
10/07/2013 09:40		Pre-Job Safety Meeting					Rig had issues breaking off circulating system.
10/07/2013 10:27		Start Job					
10/07/2013 10:27		Pump Water	2	2		50.0	Fill Lines
10/07/2013 10:28		Test Lines				2080.0	
10/07/2013 10:30		Pump Spacer	3	10		56.0	Fresh Water
10/07/2013 10:34		Pump Spacer	3	12		63.0	Mud Flush
10/07/2013 10:37		Pump Spacer	5	10		110.0	Fresh Water
10/07/2013 10:40		Pump Lead Cement	5	119.6		124.0	436sks @ 14.2ppg, 1.54yield, 7.66gal/sk
10/07/2013 11:04		Drop Top Plug					
10/07/2013 11:05		Pump Displacement	5	90.9			Fresh Water
10/07/2013 11:25		Spacer Returns to Surface					Mud Flush to Surface 60bbls into Displacement
10/07/2013 11:34		Cement Returns to Surface					85bbls Displaced 6bbls to Surface
10/07/2013 11:37		Bump Plug				420.0	1557 Final bump Pressure
10/07/2013 11:43		Check Floats					Floats Good
10/07/2013 11:44		End Job					Thanks McBride and Crew

The Road to Excellence Starts with Safety

Sold To #: 300466	Ship To #: 3107615	Quote #:	Sales Order #: 900802954
Customer: ANADARKO PETROLEUM CORP - EBUS		Customer Rep: Balkenbush, Bob	
Well Name: Howard		Well #: 38C-33HZ	API/UWI #:
Field: WATTENBERG	City (SAP): DACONO	County/Parish: Weld	State: Colorado
Contractor: MAJORS		Rig/Platform Name/Num: MAJORS 42	
Job Purpose: Cement Surface Casing			
Well Type: Development Well		Job Type: Cement Surface Casing	
Sales Person: FLING, MATTHEW	Srvc Supervisor: MCBRIDE, NATHAN		MBU ID Emp #: 313810

Job Personnel

HES Emp Name	Exp Hrs	Emp #	HES Emp Name	Exp Hrs	Emp #	HES Emp Name	Exp Hrs	Emp #
MARKOVICH, STEVEN Michael	4.5	502964	MCBRIDE, NATHAN Charles	4.5	313810			

Equipment

HES Unit #	Distance-1 way	HES Unit #	Distance-1 way	HES Unit #	Distance-1 way	HES Unit #	Distance-1 way
10025030	20 mile	11362287C	20 mile	11645063	20 mile	53301	20 mile

Job Hours

Date	On Location Hours	Operating Hours	Date	On Location Hours	Operating Hours	Date	On Location Hours	Operating Hours
TOTAL			Total is the sum of each column separately					

Job

Formation Name	Formation Depth (MD)	Top	Bottom	Form Type	Job depth MD	Job Depth TVD	Water Depth	Perforation Depth (MD)	From	To
				BHST	1075. ft	1075. ft				
							Wk Ht Above Floor			5. ft
								Deparated Loc	07 - Oct - 2013	12:30

Job Times

Date	Time	Time Zone
07 - Oct - 2013	05:00	MST
07 - Oct - 2013	08:00	MST
07 - Oct - 2013	10:27	MST
07 - Oct - 2013	11:42	MST

Well Data

Description	New / Used	Max pressure psig	Size in	ID in	Weight lbm/ft	Thread	Grade	Top MD ft	Bottom MD ft	Top TVD ft	Bottom TVD ft
13 1/2" Open Hole Section				13.5				.	1075.		
9 5/8" Surface Casing	Unknown		9.625	8.921	36.		J-55	.	1075.		

Sales/Rental/3rd Party (HES)

Description	Qty	Qty uom	Depth	Supplier
CMT CASING EQUIPMENT BOM	1	JOB		
MILEAGE FOR CEMENTING CREW,ZI	30	MI		
ZI FUEL SURCHG-CARS/PICKUPS<1 1/2TON	30	MI		
KIT,HALL WELD-A	1	EA		
CNTRLZR, 9 5/8"x13 3/4',#500-0963-1375	7	EA		
BASKET - CEMENT - 9-5/8 CSG X 12-1/4	1	EA		
PLUG,CMTG,TOP,9 5/8,HWE,8.16 MIN/9.06 MA	1	EA		
Description	Qty	Qty uom	Depth	Supplier

COLLAR-STOP-9 5/8"-FRICTION-HINGED						2	EA		
Fluid Data									
Stage/Plug #: 1									
Fluid #	Stage Type	Fluid Name	Qty	Qty uom	Mixing Density lbm/gal	Yield ft ³ /sk	Mix Fluid Gal/sk	Rate bbl/min	Total Mix Fluid Gal/sk
1	Fresh Water Spacer		10.00	bbl	8.33	.0	.0	3.0	
2	Mud Flush		12.00	bbl	8.4	.0	.0	3.0	
3.33 lbm/bbl		MUD FLUSH III, 40 LB SACK (101633304)							
42 gal/bbl		MUD FLUSH III - SBM (528788)							
3	SwiftCem B2	SWIFTCM (TM) SYSTEM (452990)	436.0	sacks	14.2	1.54	7.63	5.0	7.63
7.63 Gal		FRESH WATER							
Calculated Values		Pressures		Volumes					
Displacement		Shut In: Instant		Lost Returns		Cement Slurry		Pad	
Top Of Cement		5 Min		Cement Returns		Actual Displacement		Treatment	
Frac Gradient		15 Min		Spacers		Load and Breakdown		Total Job	
Rates									
Circulating		Mixing		Displacement		Avg. Job			
Cement Left In Pipe		Amount	42 ft	Reason	Shoe Joint				
Frac Ring # 1 @	ID	Frac ring # 2 @	ID	Frac Ring # 3 @	ID	Frac Ring # 4 @	ID		
The Information Stated Herein Is Correct				Customer Representative Signature					

