



DUAL INDUCTION COMPENSATED DENSITY COMPENSATED NEUTRON

Company	Augustus Energy Resources LLC	Company	Augustus Energy Resources LLC
Well	Five Rivers 22-19 2N46W	Well	Five Rivers 22-19 2N46W
Field	Wildcat	Field	Wildcat
County	Yuma	County	Yuma
State	Colorado	State	Colorado
Location:	API # : 05125120790000 1794' FNL & 2299' FWL SENW	Other Services	None
Permanent Datum	SEC 19 TWP 2N RGE 46W	Elevation	3978
Log Measured From	KB	K.B.	3984
Drilling Measured From	KB	D.F.	3983
		G.L.	3978
Date	March 20, 2014		
Run Number	1		
Depth Driller	2880		
Depth Logger	2879		
Bottom Logged Interval	2879		
Top Log Interval	1900		
Casing Driller	501		
Casing Logger	Not logged		
Bit Size	6.25"		
Type Fluid in Hole	Polymer Kcl		
Density / Viscosity	8.7 / 28		
pH / Fluid Loss	8 / 5.6		
Source of Sample	Mudpit		
Rm @ Meas. Temp	0.39 @ 65 F		
Rmf @ Meas. Temp	0.31 @ 65 F		
Rmc @ Meas. Temp	0.47 @ 65 F		
Source of Rmf / Rmc	Measure / Calc		
Rm @ BHT	0.24 @ 107 F		
Time Circulation Stopped	2015		
Time Logger on Bottom	2330		
Maximum Recorded Temperature	107 F		
Equipment Number	49		
Location	Ft. Morgan		
Recorded By	Clint Christensen		
Witnessed By	Justin Stone		

<<< Fold Here >>>

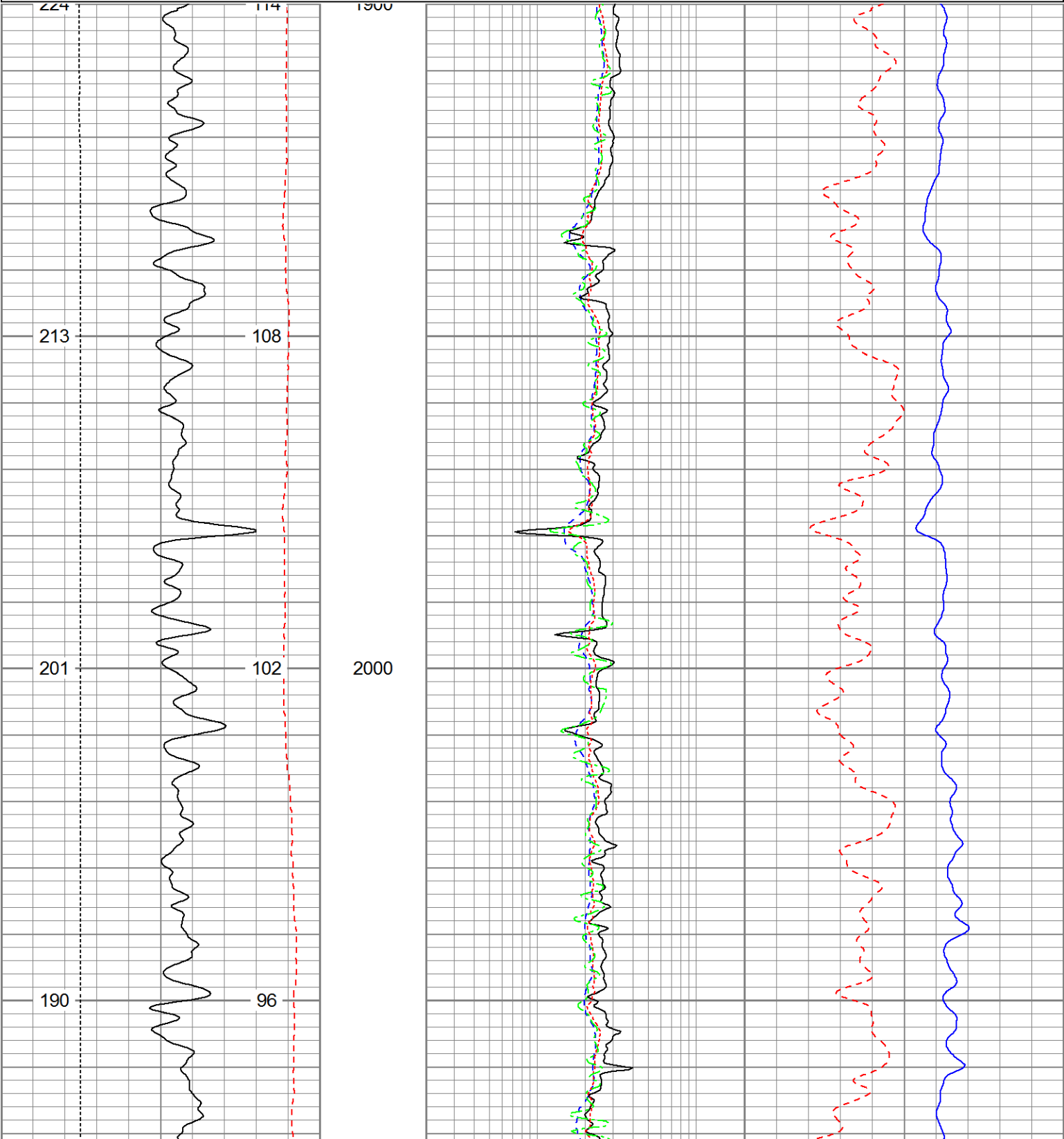
All interpretations are opinions based on inferences from electrical or other measurements and Pioneer Wireline Services, LLC cannot and does not guarantee the accuracy or correctness of any interpretation, and Pioneer Wireline Services, LLC will not be liable or responsible for any loss, costs, damages, or expenses incurred or sustained by anyone resulting from any interpretation made by any of our officers, agents or employees.

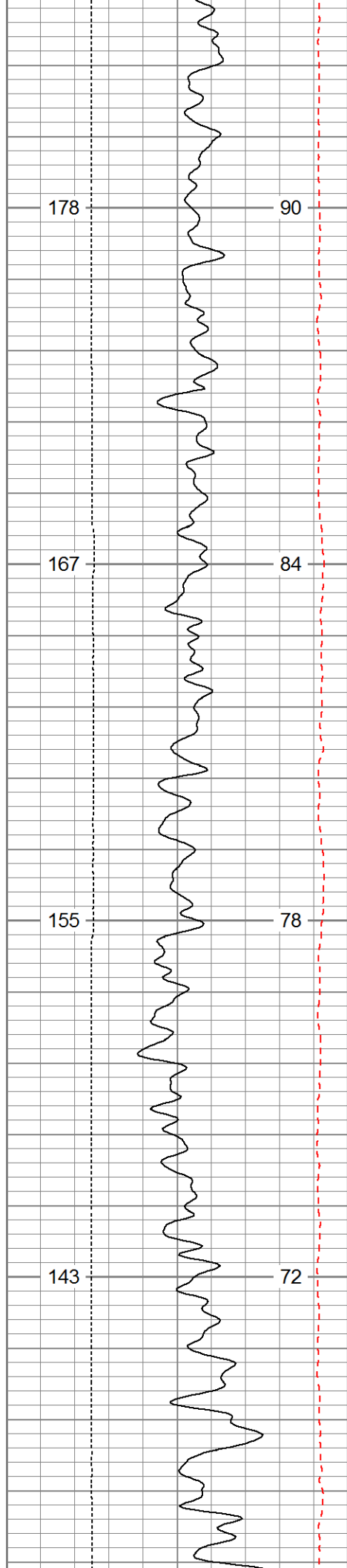
Comments

Annular volume calculated for 4-1/2" casing
Excel Drilling Rig 2
Thank you for using Pioneer Energy Services!

Database File: 13491.db
Dataset Pathname: final
Presentation Format: pdce
Dataset Creation: Fri Mar 21 00:36:02 2014
Charted by: Depth in Feet scaled 1:240

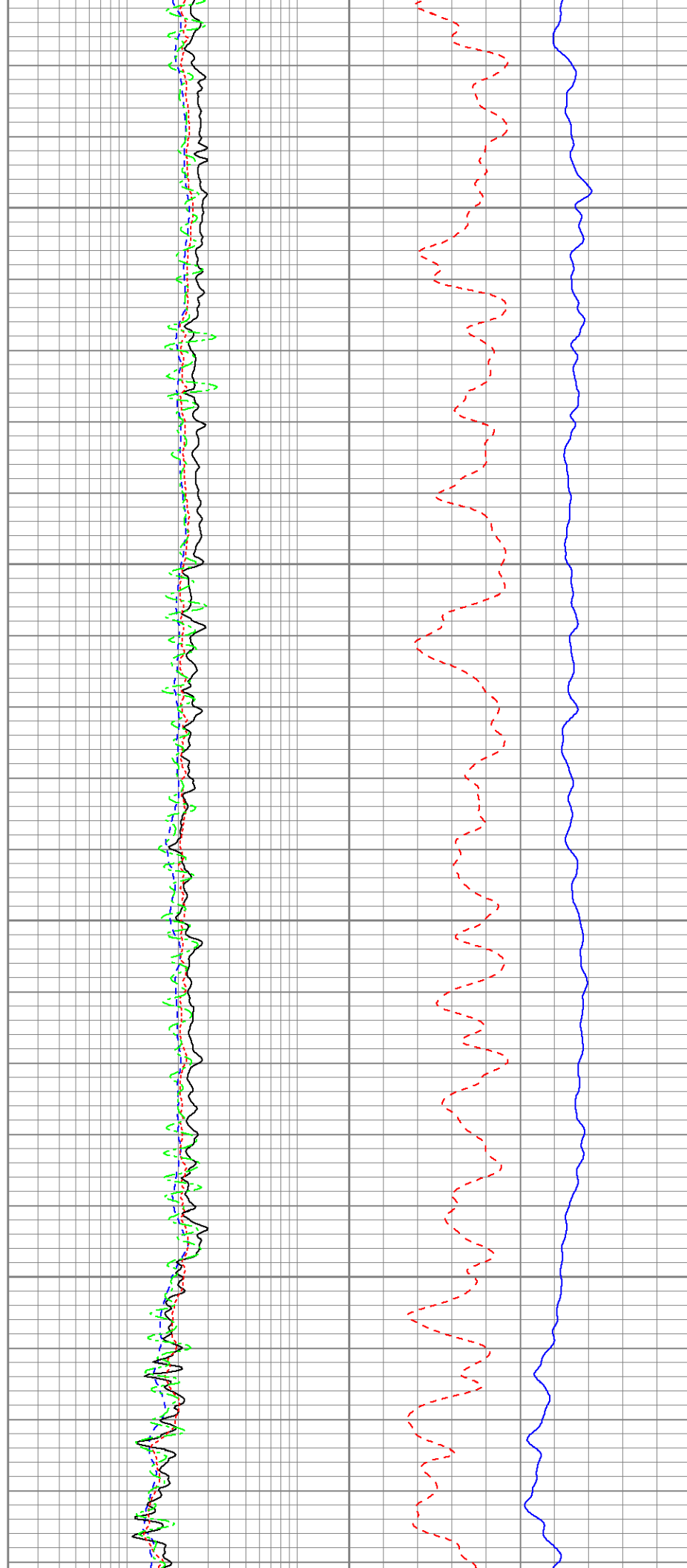
0	Gamma Ray (GAPI)	200	0.2	Deep Resistivity (Ohm-m)	20	60	Density Porosity (pu)	0
0	SP (mV)	200	0.2	Shallow Resistivity (Ohm-m)	20	60	Neutron Porosity (pu)	0
4	Caliper (in)	14	0.2	Medium Resistivity (Ohm-m)	20			
BHV (cu. ft.)		ABHV (cu. ft.)	True Resistivity (Ohm-m)					
(ft3)		(ft3)	0.2	(Ohm-m)	20			

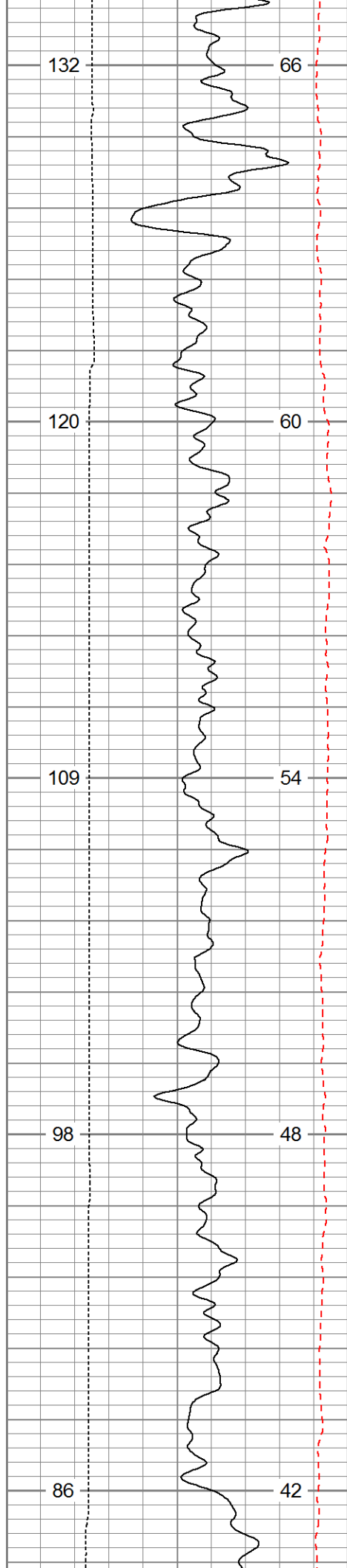




2100

2200

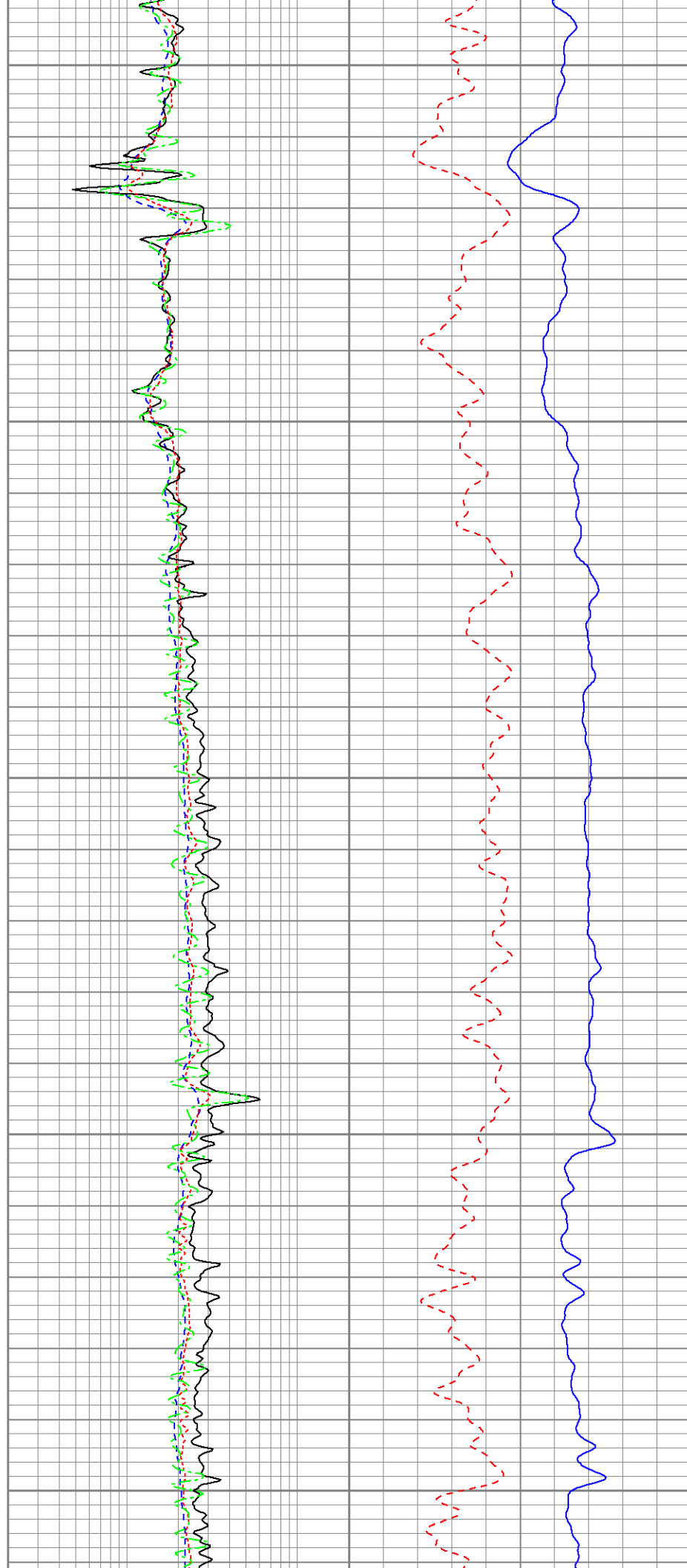


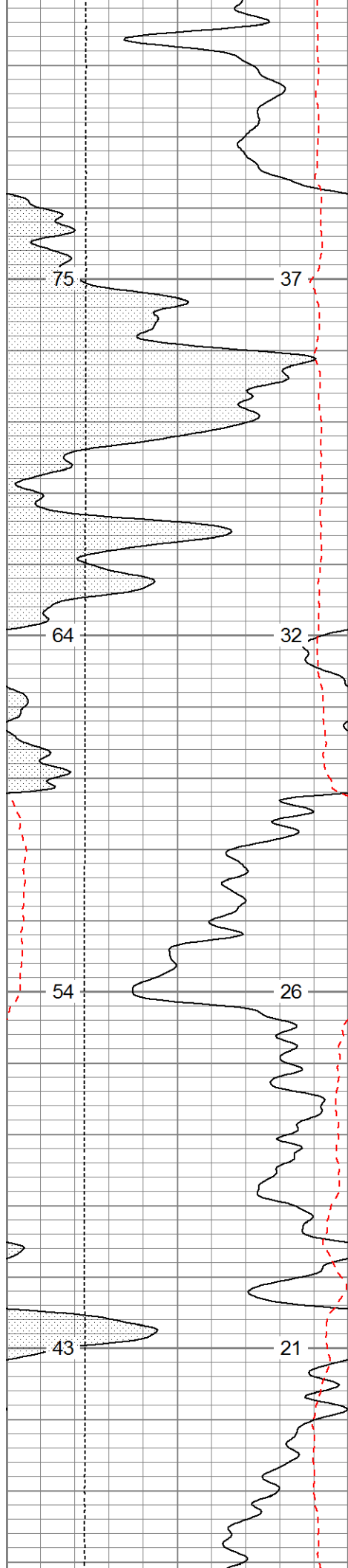


2300

2400

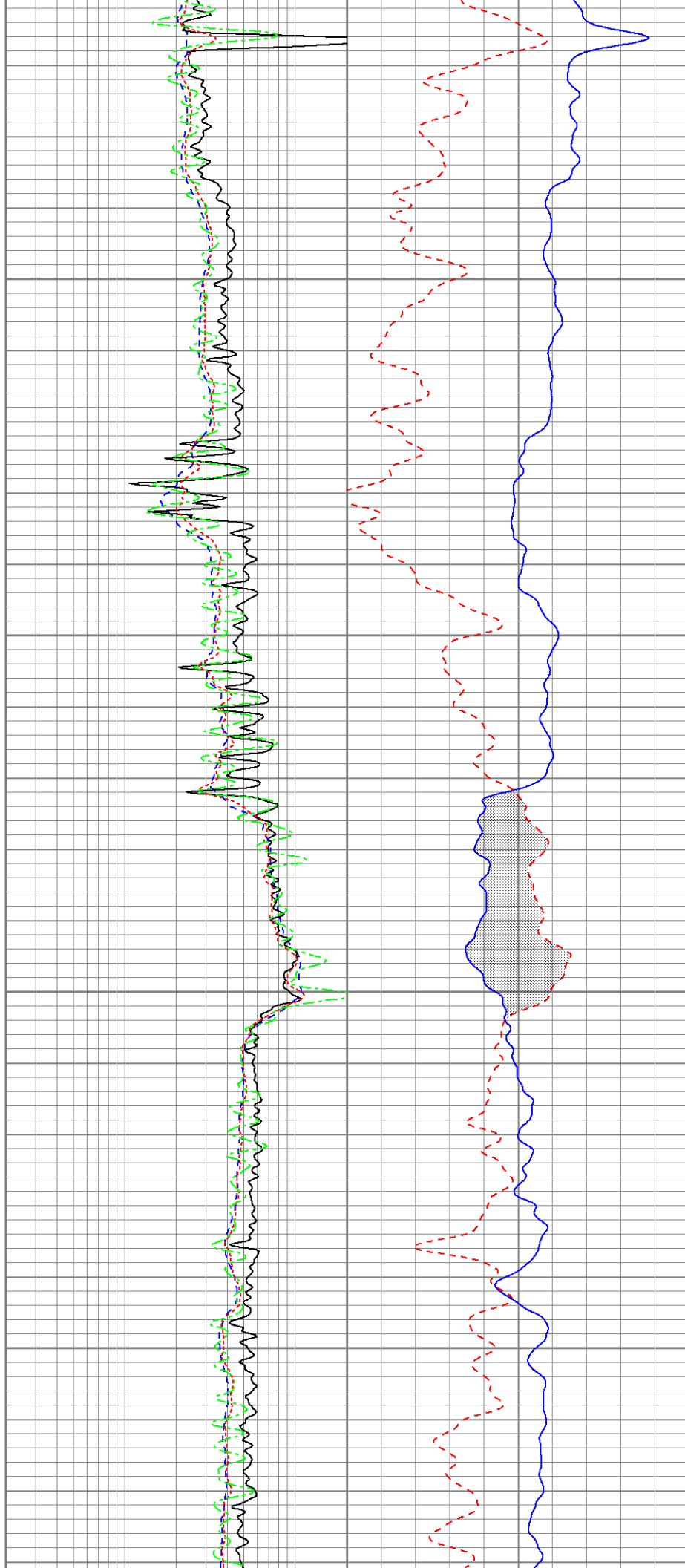
2500

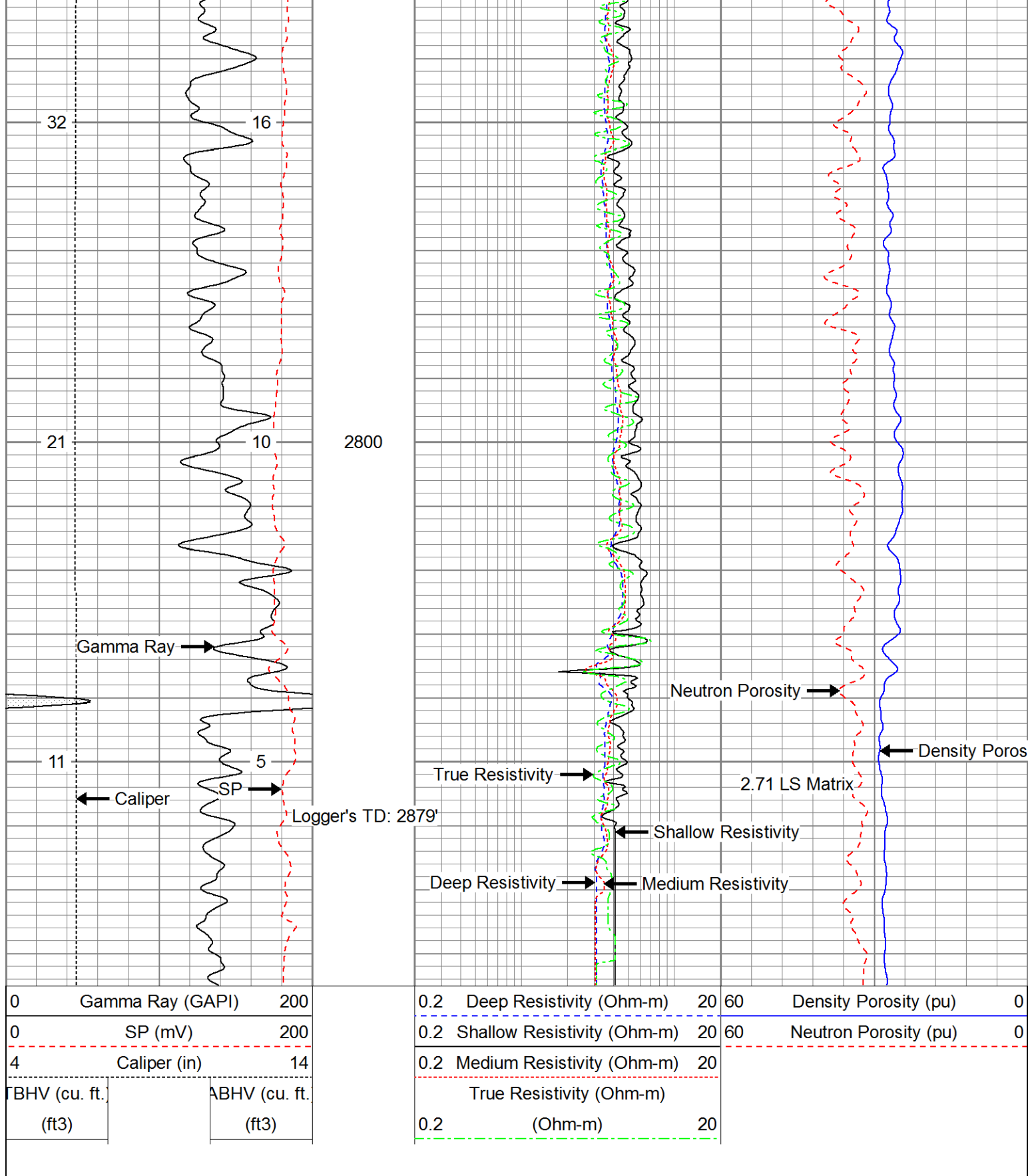




2600

2700

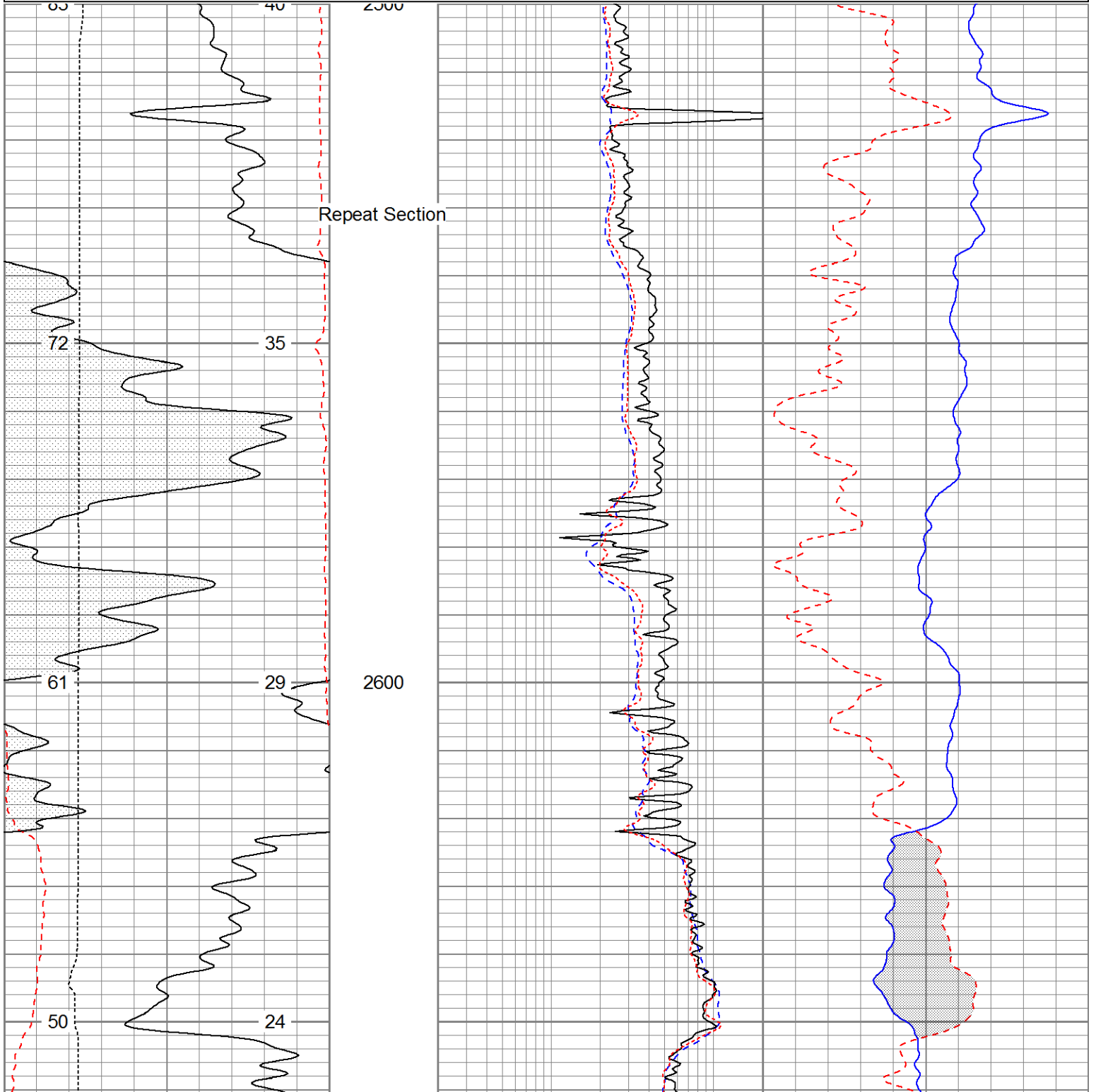


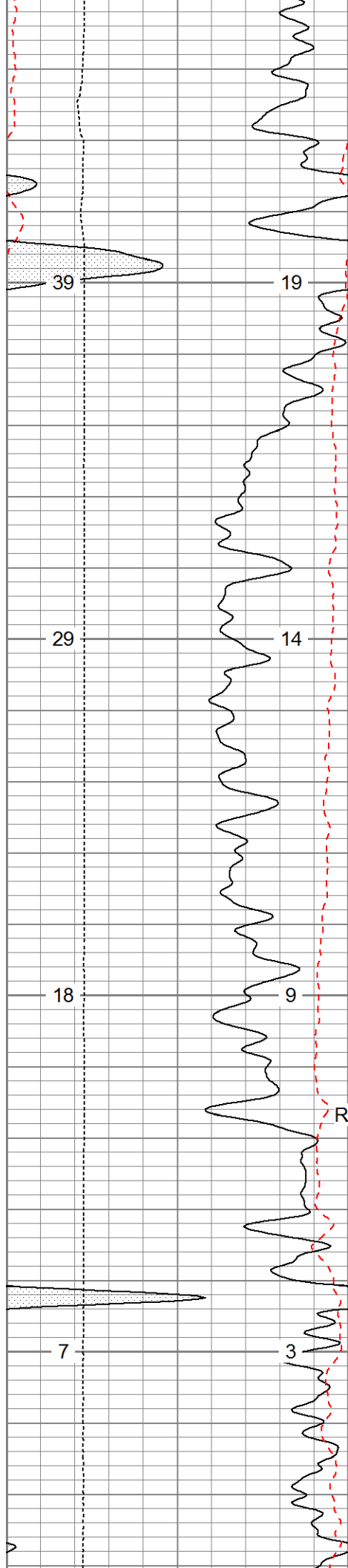


Database File: 13491.db
 Dataset Pathname: pass2.1
 Presentation Format: pdce
 Dataset Creation: Thu Mar 20 23:51:41 2014 by Calc 0
 Charted by: Depth in Feet scaled 1:240

0	Gamma Ray (GAPI)	200
0	SP (mV)	200
4	Caliper (in)	14
ABHV (cu. ft.)		ABHV (cu. ft.)
(ft3)		(ft3)

0.2	Deep Resistivity (Ohm-m)	20	60	Density Porosity (pu)	0
0.2	Shallow Resistivity (Ohm-m)	20	60	Neutron Porosity (pu)	0
0.2	Medium Resistivity (Ohm-m)	20			

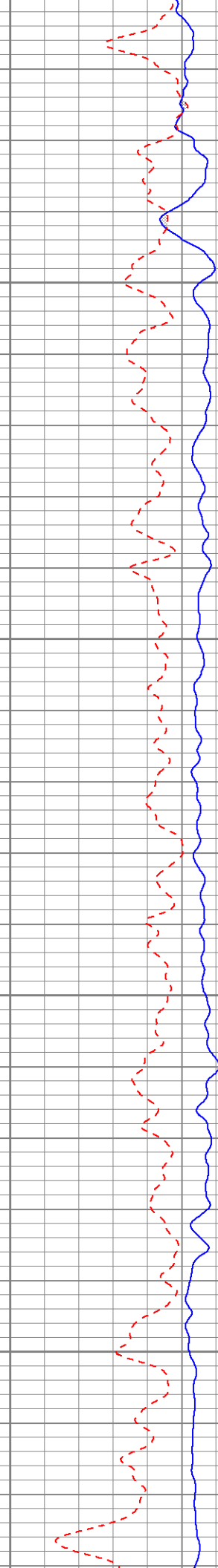
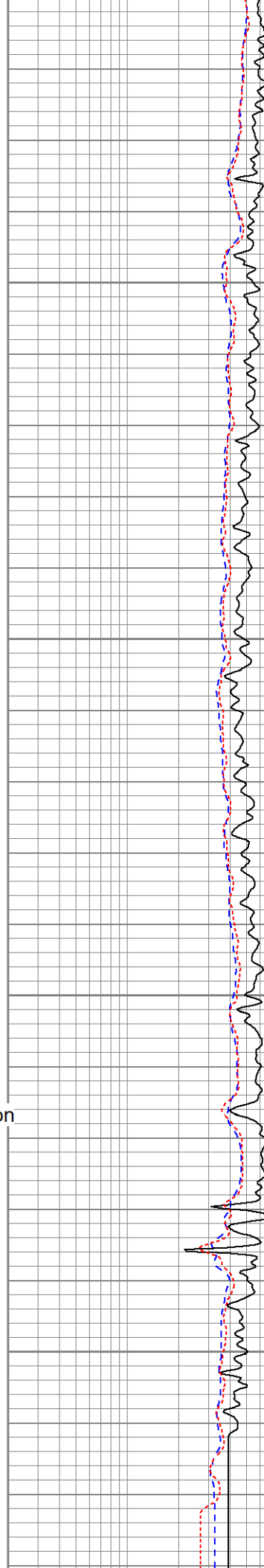




2700

2800

Repeat Section



0	Gamma Ray (GAPI)	200	0.2	Deep Resistivity (Ohm-m)	20	60	Density Porosity (pu)	0
0	SP (mV)	200	0.2	Shallow Resistivity (Ohm-m)	20	60	Neutron Porosity (pu)	0
4	Caliper (in)	14	0.2	Medium Resistivity (Ohm-m)	20			
ABHV (cu. ft. (ft3))		ABHV (cu. ft. (ft3))						



Pioneer Energy Services

Repeat Pass

Calibration Report

Database File: 13491.db
Dataset Pathname: pass2
Dataset Creation: Thu Mar 20 23:37:54 2014 by Log 0

Dual Induction Calibration Report

Serial-Model: 1011-PSI
Surface Cal Performed:

Loop:	Readings		References			Results	
	Air	Loop	Air	Loop		m	b
Deep	0.000	1.000	0.000	1.000	mmho/m	0.520	-28.000
Medium	0.000	1.000	0.000	1.000	mmho/m	0.440	-28.000

Compensated Density Calibration Report

Serial-Model: 998-PSI
Master Calibration Performed: Sat Feb 22 21:47:06 2014

Master Calibration

	Density		Far Detector	Near Detector	
Magnesium	1.750	g/cc	7210.00	9816.00	cps
Aluminum	2.690	g/cc	1326.00	6231.00	cps
	Size		Reading		
Small Ring		in			
Medium Ring		in			
Large Ring		in			

Compensated Neutron Calibration Report

Serial Number: 826
Tool Model: PSI

CALIBRATION

Detector	Readings		Target		Normalization
Short Space	1.00	cps	1.00	cps	1.9000
Long Space	1.00	cps	1.00	cps	2.0900

Gamma Ray Calibration Report		
Serial Number:	939	
Tool Model:	PSI	
Performed:	Sat Feb 22 21:47:24 2014	
Calibrator Value:	1.0	GAPI
Background Reading:	0.0	cps
Calibrator Reading:	1.0	cps
Sensitivity:	0.6200	GAPI/cps