

BISON OIL WELL CEMENTING, INC.

1738 Wynkoop St., Ste. 102
Denver, Colorado 80202
Phone: 303-296-3010
Fax: 303-298-8143
E-mail: bisonoil1@qwestoffice.net



SERVICE INVOICE

Nº 12201

WELL NO. AND FARM <i>Gustafson #1</i>	COUNTY <i>Weld</i>	STATE <i>Colo.</i>	DATE <i>4-3-14</i>
CHARGE TO <i>Bayswater E+P</i>	WELL LOCATION SEC. <i>26</i> TWP. <i>7N</i> RANGE <i>65W</i>		CONTRACTOR <i>RCWS #16</i>
DELIVERED TO <i>WCR 76+47</i>		LOCATION <i>1 Shop</i>	CODE
SHIPPED VIA <i>4022-3104/4006-3212</i>		LOCATION <i>2 76+47</i>	CODE
TYPE AND PURPOSE OF JOB <i>P/A</i>		LOCATION <i>3 Shop</i>	CODE
		WELL TYPE <i>GAS</i>	CODE

PRICE REFERENCE	DESCRIPTION	UNITS		UNIT PRICE	AMOUNT
		QTY.	MEAS.		
Day 1	Pump Charge	1	EA.		
Day 2	Pump Charge	1	EA.		
Day 1	NEAT-G with 3% BCCA-1	100	SK.		
Day 2	Neat-G	59	SK.		
Day 1	Truck Mileage 400 mile 60 mile min ONE WAY	1	EA.		
	PER Jim Riedolf only charge for ONE TRUCK				
	Pickup Mileage 1.50 mile 60 mile min ONE WAY	1	EA.		
Day 2	Pickup Mileage 1.50 mile 60 mile min ONE WAY	1	EA.		
Day 1	IRON Insp. Fee	1	EA.		
Day 2	IRON Insp. Fee	1	EA.		
	Data Int.	1	EA.		
Day 1	Waiting Time	2 1/4	hr.		
Day 1	Depth Charge	1	EA.		
	Sugar	100	lb.		
Total Weight					
Loaded Miles					
			Ton Miles		

If this account is not paid within 30 days of invoice date a FINANCE CHARGE will be made. Computed at a single monthly rate of 1 1/2% which is equal to an ANNUAL PERCENTAGE RATE OF 18%.

TAX REFERENCES

Thanks Calvin

"TAXES WILL BE ADDED AT CORPORATE OFFICE"

SUB TOTAL

TAX

TOTAL

SUBJECT TO CORRECTION

Customer or His Agent

Bison Oil Well Cementing, Inc. Representative

Customers hereby acknowledges and specifically agrees to the terms and conditions on this work order, including, without limitation, the provisions on the reverse side hereof which include the release and indemnity.



Bison Oil Well Cementing

Customer: Bayswater E+P
Well Name: Gustafson #1

Invoice # 12201
API# 05-123-05306
Foreman: Calvin Reimers
Date 4/4/2014

County: Weld
State: Colorado
Sec: 26
Twp: 7N
Range: 65W

Consultant: Irvin
Rig Name & Number: RC Well Services 16
Distance To Location: 24 Miles
Units On Location: 3104/3212
Time Requested: 12300pm/930am
Time Arrived On Location: 1130am/900am
Time Left Location: 615pm/130pm

Plug Job

Well Data

OD Inches	2.875	
String Weight Per ft	6.5	
First Plug Sacks	50	
First Plug Depth	3021	
Second Plug Sacks	50	
Second Plug Depth	1500	
Third Plug Sacks	25	
Third Plug Depth	386	
Fourth Plug Sacks	25	
Fourth Plug Depth	65	
ID	2.441	
First Plug Displacement	17.4858	bbl
Second Plug Displacement	8.6821	bbl
Thirst Plug Displacement	2.2342	bbl
Fourth Plug Displacement	0.3762	bbl
bbls of Spacer Ahead	10	bbls

First Plug Cement Data

Cement Name: Neat-G
Cement Density (lb/gal) : 15.8
Cement Yield (cuft) : 1.15
Gallons Per Sack: 5.00

Second Plug Cement Data

Cement Name: Neat - G
Cement Density (lb/gal) : 15.8
Cement Yield (cuft) : 1.15
Gallons Per Sack: 5.00

Third Plug Cement Data

Cement Name: Neat-G
Cement Density (lb/gal) : 15.8
Cement Yield (cuft) : 1.15
Gallons Per Sack: 5.00

Fourth Plug Cement Data

Cement Name:
Cement Density (lb/gal) : 15.8
Cement Yield (cuft) : 1.15
Gallons Per Sack: 5.00

Displacement Fluid lb/gal: 8.3
Fluid Ahead (bbls): 10.0
H2O Wash Up (bbls): 20.0

bbls of Mix Water

First Plug bbls Mix Wate	5.9524 bbls
Second Plug bbls Mix Wat	5.9524 bbls
Third Plug bbls Mix Wate	2.9762 bbls
Fourth Plug bbls Mix Wat	2.9762 bbls

bbls of Slurry

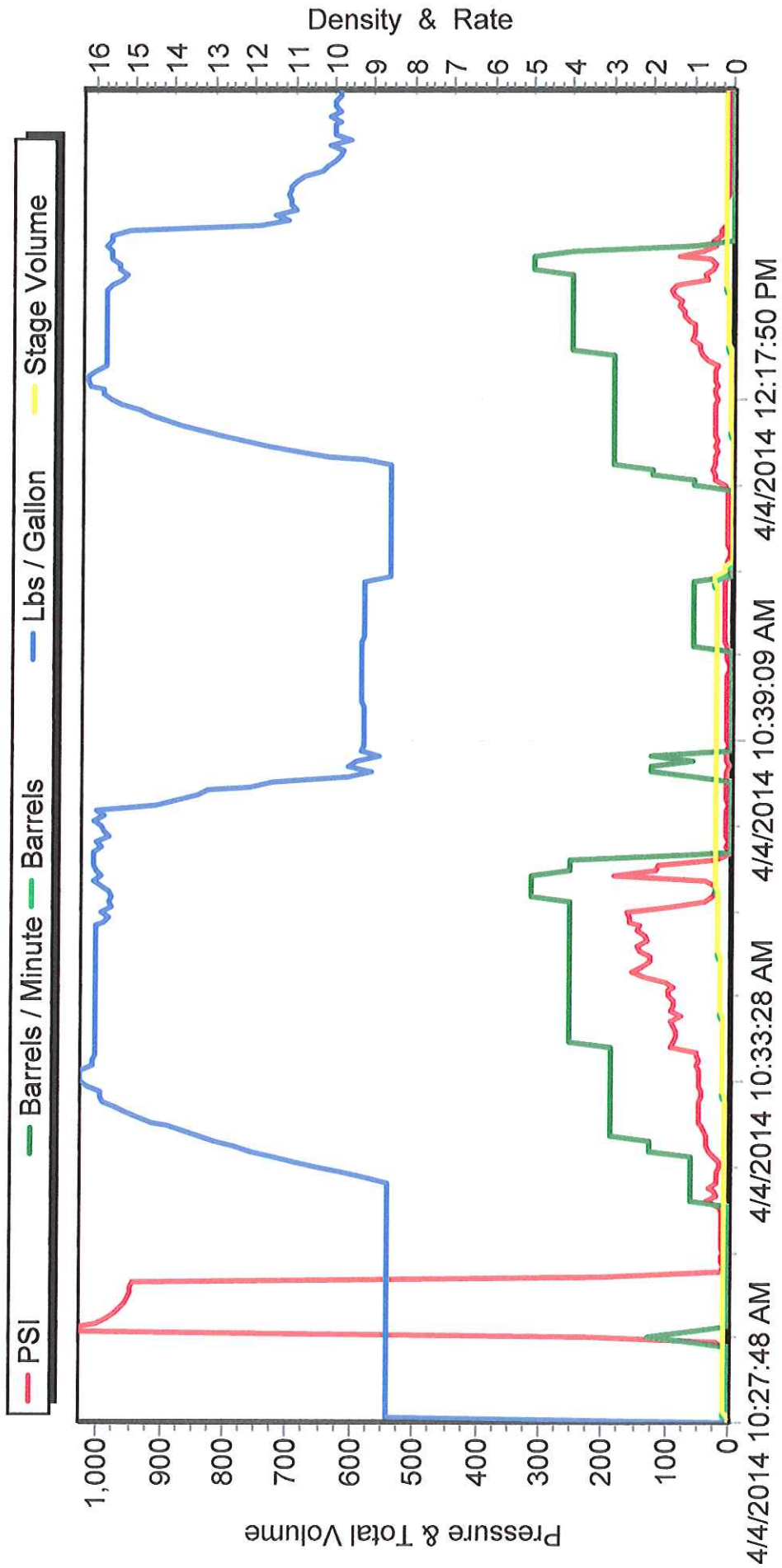
First Plug bbls of Slurry	10.2408 bbls
Second Plug bbls of Slurry	10.2408 bbls
Third Plug bbls of Slurry	5.1204 bbls
Fourth Plug bbls of Slurry	5.1204 bbls

X

Authorized To Proceed

Customers hereby acknowledges and specifically agrees to the terms and condition on this work order, including, without limitation, the provisions on this work order.

M/D TOTCO 2000 SERIES





INVOICE #
LOCATION
FOREMAN
Date

Customer
Well Name

Bayswater E+P
Gustafson #1

Treatment Report Page 2

DESCRIPTION OF JOB EVENTS

Safety Meeting		Displace 1			Displace 2			Displace 3			Displace 4		
		BbLS	Time	PSI	BbLS	Time	PSI	BbLS	Time	PSI	BbLS	Time	PSI
MIRU	1231pm												
	1145am												
		0	1246pm	330	0	545pm	230	0	1037am	190	0	1221pm	90
	1239pm	10	1248pm	360	10	547pm	410	10			10		
	540pm	20	1249pm	460	20			20			20		
CIRCULATE	1032am	30			30			30			30		
CIRCULATE	1217pm	40			40			40			40		
M & P		50			50			50			50		
		60			60			60			60		
	Time	Sacks											
	1243pm	50			70			70			70		
	542pm	50			80			80			80		
Third Plug		25			90			90			90		
Fourth Plug		25			100			100			100		
Mixed bbls													
First Plug	5.9	110			110			110			110		
Second Plug	5.9	120			120			120			120		
Third Plug	2.97	130			130			130			130		
Fourth Plug	2.97	140			140			140			140		
Water Temp	50	150			150			150			150		

Notes:

The day

9 sks on top off

X

X	Work Preformed
---	----------------

X

X	Title
---	-------

Y

X	Date
---	------