

KERR-MCGEE OIL & GAS ONSHORE LP



Location: COLORADO Slot: SLOT#39 ELLIOTT 4C-18HZ (666°FNL & 567°FEL, SEC.18)
 Field: WELD COUNTY (KERR MCGEE) Well: ELLIOTT 4C-18HZ
 Facility: SEC.18-T3N-R67W Wellbore: ELLIOTT 4C-18HZX PWB

Plot reference wellpath is ELLIOTT 4C-18HZX (REV-A.0) PWP

True vertical depths are referenced to XTREME 8 (17KB) (RKB)	Grid System: NAD83 / Lambert Colorado SP, Northern Zone (501), US feet
Measured depths are referenced to XTREME 8 (17KB) (RKB)	North Reference: True north
XTREME 8 (17KB) (RKB) to Mean Sea Level: 4853 feet	Scale: True distance
Mean Sea Level to Mud line (At Slot: SLOTT#39 ELLIOTT 4C-18HZ (666°FNL & 567°FEL, SEC.18)): 0 feet	Depths are in feet
Coordinates are in feet referenced to Slot	Created by: pcreain on 07/Apr/2014

Location Information

Facility Name	Grid East (US ft)	Grid North (US ft)	Latitude	Longitude		
SEC.18-T3N-R67W	3157784.270	1326430.670	40°13'41.052"N	104°56'05.640"W		
Slot	Local N (ft)	Local E (ft)	Grid East (US ft)	Grid North (US ft)	Latitude	Longitude
SLOT#39 ELLIOTT 4C-18HZ (666°FNL & 567°FEL, SEC.18)	1204.16	2685.75	3160462.169	1327651.868	40°13'52.950"N	104°55'31.012"W
XTREME 8 (17KB) (RKB) to Mud line (At Slot: SLOTT#39 ELLIOTT 4C-18HZ (666°FNL & 567°FEL, SEC.18))						4853ft
Mean Sea Level to Mud line (At Slot: SLOTT#39 ELLIOTT 4C-18HZ (666°FNL & 567°FEL, SEC.18))						0ft
XTREME 8 (17KB) (RKB) to Mean Sea Level						4853ft

Survey Program

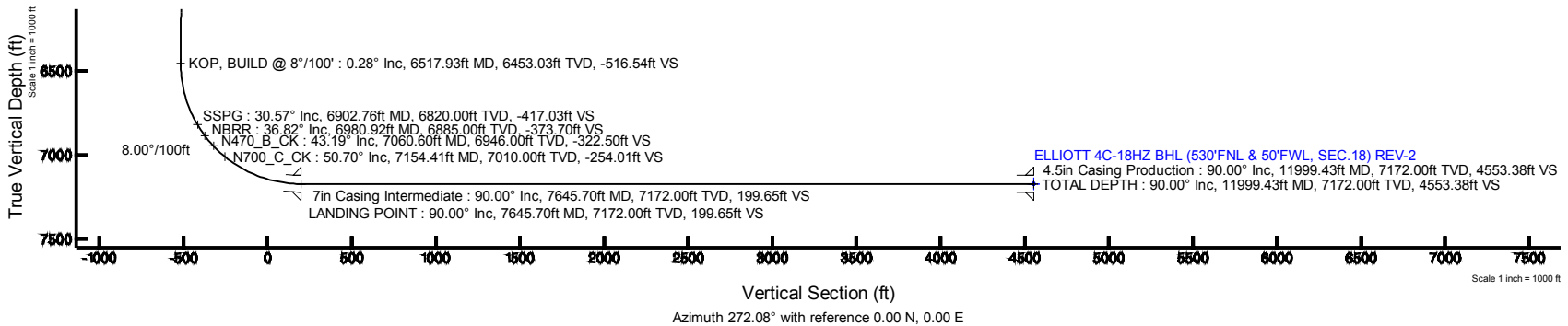
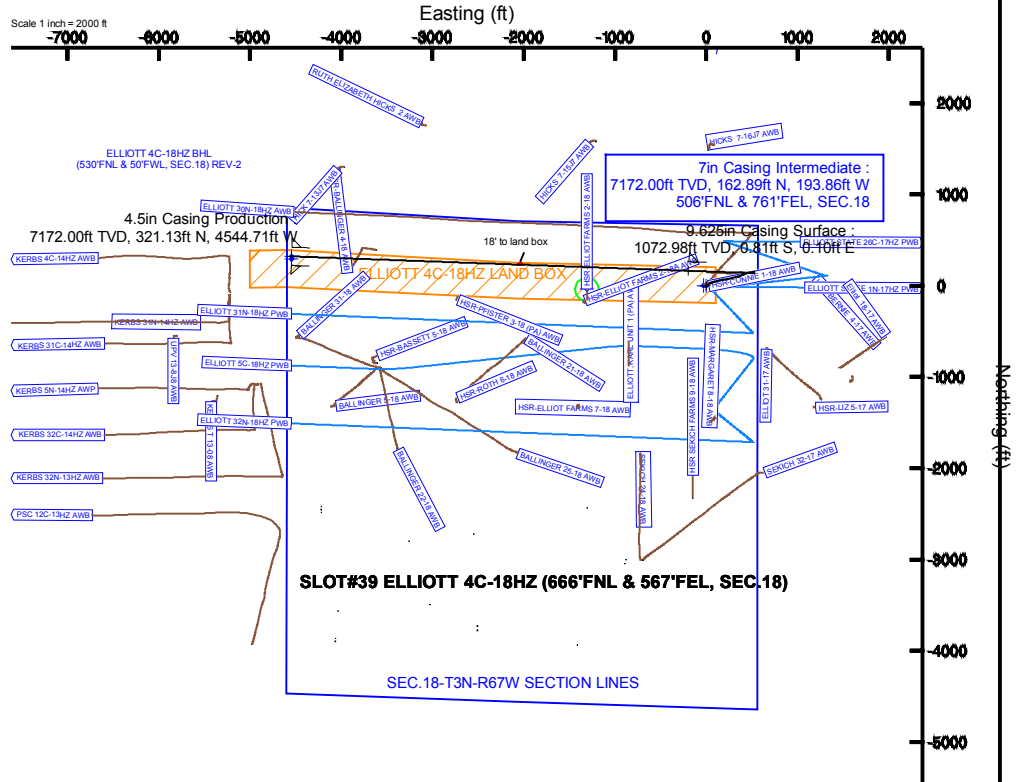
Start MD (ft)	End MD (ft)	Tool	Model	Log Name/Comment	Wellbore
17.00	986.00	Generic gyro - continuous	Generic gyro - continuous (Standard)		ELLIOTT 4C-18HZ AWB
986.00	6073.00	NavTrak	NavTrak (IFR)		ELLIOTT 4C-18HZ AWB
6073.00	11999.43	NavTrak	NavTrak (IFR)		ELLIOTT 4C-18HZX PWB

Well Profile Data

Design Comment	MD (ft)	Inc (")	Az (°)	TVD (ft)	Local N (ft)	Local E (ft)	DLS (*/100ft)	VS (ft)
TIE-ON INTO BHI MWD+IFR SURVEYS	6073.00	0.280	129.670	6008.11	140.40	520.26	0.24	-514.82
KOP, BUILD @ 8°/100'	6517.93	0.280	129.670	6453.03	139.01	521.94	0.00	-516.54
LANDING POINT	7645.70	90.000	272.082	7172.00	162.89	-193.86	8.00	199.65
TOTAL DEPTH	11999.43	90.000	272.083	7172.00	321.13	-4544.71	0.00	4553.38

Targets

Name	MD (ft)	TVD (ft)	Local N (ft)	Local E (ft)	Grid East (US ft)	Grid North (US ft)	Latitude	Longitude
SEC.18-T3N-R67W SECTION LINES	0.00	0.40	-29.86	3160432.31	1327652.08	40°13'52.954"N	104°55'31.997"W	
ELLIOTT 4C-18HZ BHL (530°FNL & 50°FWL, SEC.18) REV-2	11999.43	7172.00	321.13	-4544.71	3155915.68	1327943.52	40°13'56.119"N	104°56'29.609"W
ELLIOTT 4C-18HZ BHL ON PLAY (666°FNL & 50°FWL, SEC.18) REV-1	7172.00	291.13	-4544.71	3155915.67	1327913.52	40°13'55.823"N	104°56'29.609"W	
ELLIOTT 4C-18HZ LAND BOX	7172.00	0.00	0.00	3160462.17	1327651.87	40°13'52.950"N	104°55'31.012"W	
HSR-ELLIOTT FARMS (128°CIRCLE)	8817.00	-39.24	-1307.82	3159154.69	1327604.15	40°13'52.562"N	104°55'47.874"W	



Planned Wellpath Report

ELLIOTT 4C-18HZX (REV-A.0) PWP

Page 1 of 6

REFERENCE WELLPATH IDENTIFICATION			
Operator	KERR-MCGEE OIL & GAS ONSHORE LP	Slot	SLOT#39 ELLIOTT 4C-18HZ (666'FNL & 567'FEL, SEC.18)
Area	COLORADO	Well	ELLIOTT 4C-18HZ
Field	WELD COUNTY (KERR MCGEE)	Wellbore	ELLIOTT 4C-18HZX PWB
Facility	SEC.18-T3N-R67W	Sidetrack from	ELLIOTT 4C-18HZ AWB at 6073.00 MD

REPORT SETUP INFORMATION			
Projection System	NAD83 / Lambert Colorado SP, Northern Zone (501), US feet	Software System	WellArchitect® 4.0.0
North Reference	True	User	Precain
Scale	0.999957	Report Generated	07/Apr/2014 at 10:50
Convergence at slot	n/a	Database/Source file	WellArchitectDB/ELLIOTT_4C-18HZX_PWB.xml

WELLPATH LOCATION						
	Local coordinates		Grid coordinates		Geographic coordinates	
	North[ft]	East[ft]	Easting[US ft]	Northing[US ft]	Latitude	Longitude
Slot Location	1204.16	2685.75	3160462.17	1327651.87	40°13'52.950"N	104°55'31.012"W
Facility Reference Pt			3157784.27	1326430.67	40°13'41.052"N	104°56'05.640"W
Field Reference Pt			3197771.84	1268891.29	40°04'09.600"N	104°47'36.000"W

WELLPATH DATUM			
Calculation method	Minimum curvature	XTREME 8 (17'KB) (RKB) to Installation Vertical Datum	4853.00ft
Horizontal Reference Pt	Slot	XTREME 8 (17'KB) (RKB) to Mean Sea Level	4853.00ft
Vertical Reference Pt	XTREME 8 (17'KB) (RKB)	XTREME 8 (17'KB) (RKB) to Mud Line at Slot (SLOT#39 ELLIOTT 4C-18HZ (666'FNL & 567'FEL, SEC.18))	4853.00ft
MD Reference Pt	XTREME 8 (17'KB) (RKB)	Section Origin	N 0.00, E 0.00 ft
Field Vertical Reference	Mean Sea Level	Section Azimuth	272.08°

REFERENCE WELLPATH IDENTIFICATION			
Operator	KERR-MCGEE OIL & GAS ONSHORE LP	Slot	SLOT#39 ELLIOTT 4C-18HZ (666'FNL & 567'FEL, SEC.18)
Area	COLORADO	Well	ELLIOTT 4C-18HZ
Field	WELD COUNTY (KERR MCGEE)	Wellbore	ELLIOTT 4C-18HZX PWB
Facility	SEC.18-T3N-R67W	Sidetrack from	ELLIOTT 4C-18HZ AWB at 6073.00 MD

WELLPATH DATA (129 stations) † = interpolated/extrapolated station										
MD [ft]	Inclination [°]	Azimuth [°]	TVD [ft]	Vert Sect [ft]	North [ft]	East [ft]	Latitude	Longitude	DLS [°/100ft]	Comments
0.00†	0.000	178.050	0.00	0.00	0.00	0.00	40°13'52.950"N	104°55'31.012"W	0.00	
17.00	0.000	178.050	17.00	0.00	0.00	0.00	40°13'52.950"N	104°55'31.012"W	0.00	
117.00	0.390	178.050	117.00	-0.02	-0.34	0.01	40°13'52.947"N	104°55'31.012"W	0.39	
217.00	0.670	157.410	216.99	-0.29	-1.22	0.25	40°13'52.938"N	104°55'31.009"W	0.33	
317.00	0.330	147.680	316.99	-0.70	-2.00	0.63	40°13'52.930"N	104°55'31.004"W	0.35	
417.00	0.360	125.060	416.99	-1.12	-2.43	1.04	40°13'52.926"N	104°55'30.999"W	0.14	
517.00	0.240	58.730	516.99	-1.56	-2.50	1.47	40°13'52.925"N	104°55'30.993"W	0.34	
617.00	0.270	18.120	616.99	-1.80	-2.17	1.73	40°13'52.929"N	104°55'30.990"W	0.18	
717.00	0.220	318.570	716.99	-1.74	-1.80	1.67	40°13'52.932"N	104°55'30.990"W	0.25	
750.01†	0.246	318.445	750.00	-1.64	-1.70	1.58	40°13'52.933"N	104°55'30.992"W	0.08	Fox Hills Base
817.00	0.300	318.260	816.99	-1.42	-1.46	1.37	40°13'52.936"N	104°55'30.994"W	0.08	
917.00	0.450	294.480	916.98	-0.88	-1.10	0.84	40°13'52.939"N	104°55'31.001"W	0.21	
986.00	0.320	305.700	985.98	-0.47	-0.88	0.44	40°13'52.941"N	104°55'31.006"W	0.22	
1099.00	0.250	219.710	1098.98	-0.05	-0.88	0.02	40°13'52.941"N	104°55'31.012"W	0.35	
1191.00	1.230	56.950	1190.97	-0.74	-0.50	0.72	40°13'52.945"N	104°55'31.003"W	1.60	
1282.00	2.860	63.060	1281.91	-3.52	1.06	3.56	40°13'52.961"N	104°55'30.966"W	1.80	
1374.00	4.130	46.010	1373.74	-7.83	4.40	7.99	40°13'52.994"N	104°55'30.909"W	1.77	
1466.00	5.210	53.190	1465.44	-13.38	9.21	13.72	40°13'53.041"N	104°55'30.835"W	1.33	
1557.00	5.830	55.430	1556.01	-20.30	14.31	20.84	40°13'53.091"N	104°55'30.743"W	0.72	
1698.00	9.640	59.000	1695.71	-35.95	24.45	36.86	40°13'53.192"N	104°55'30.537"W	2.72	
1790.00	9.360	71.180	1786.45	-49.39	30.84	50.54	40°13'53.255"N	104°55'30.360"W	2.20	
1882.00	10.970	72.560	1877.01	-64.63	35.87	65.98	40°13'53.304"N	104°55'30.161"W	1.77	
1973.00	12.470	71.180	1966.11	-81.97	41.64	83.54	40°13'53.361"N	104°55'29.935"W	1.68	
2065.00	13.700	75.020	2055.72	-101.66	47.66	103.47	40°13'53.421"N	104°55'29.678"W	1.64	
2157.00	14.410	73.660	2144.96	-122.94	53.70	124.98	40°13'53.481"N	104°55'29.401"W	0.85	
2248.00	15.580	79.030	2232.87	-145.59	59.21	147.84	40°13'53.535"N	104°55'29.106"W	1.99	
2340.00	17.050	81.260	2321.16	-170.88	63.61	173.30	40°13'53.579"N	104°55'28.778"W	1.74	
2431.00	18.050	81.480	2407.93	-197.84	67.72	200.43	40°13'53.619"N	104°55'28.428"W	1.10	
2523.00	17.550	80.990	2495.52	-225.46	72.01	228.23	40°13'53.662"N	104°55'28.069"W	0.57	
2615.00	17.400	76.160	2583.28	-252.30	77.47	255.28	40°13'53.716"N	104°55'27.721"W	1.58	
2706.00	16.040	75.820	2670.43	-277.45	83.81	280.69	40°13'53.778"N	104°55'27.393"W	1.50	
2798.00	15.460	77.050	2758.98	-301.50	89.67	304.96	40°13'53.836"N	104°55'27.080"W	0.73	
2889.00	15.860	78.730	2846.60	-325.31	94.82	328.97	40°13'53.887"N	104°55'26.770"W	0.66	
2981.00	15.060	73.620	2935.27	-348.88	100.64	352.77	40°13'53.945"N	104°55'26.464"W	1.72	
3072.00	14.940	68.480	3023.18	-370.84	108.28	375.03	40°13'54.020"N	104°55'26.177"W	1.47	
3162.00	13.970	69.290	3110.33	-391.49	116.38	395.98	40°13'54.100"N	104°55'25.906"W	1.10	
3254.00	14.100	68.450	3199.58	-411.99	124.42	416.79	40°13'54.179"N	104°55'25.638"W	0.26	
3346.00	14.120	68.530	3288.80	-432.55	132.64	437.66	40°13'54.261"N	104°55'25.369"W	0.03	
3431.00	12.170	72.780	3371.58	-450.51	139.09	455.87	40°13'54.324"N	104°55'25.134"W	2.56	
3516.00	9.970	80.060	3454.99	-466.17	143.02	471.68	40°13'54.363"N	104°55'24.931"W	3.06	
3601.00	8.650	82.170	3538.87	-479.66	145.16	485.26	40°13'54.384"N	104°55'24.755"W	1.60	
3614.28†	8.634	81.612	3552.00	-481.62	145.44	487.23	40°13'54.387"N	104°55'24.730"W	0.64	Parkman
3687.00	8.560	78.520	3623.90	-492.25	147.31	497.94	40°13'54.406"N	104°55'24.592"W	0.64	
3772.00	7.370	83.540	3708.08	-503.79	149.18	509.55	40°13'54.424"N	104°55'24.442"W	1.62	
3857.00	5.450	90.990	3792.55	-513.22	149.73	519.01	40°13'54.430"N	104°55'24.320"W	2.46	

REFERENCE WELLPATH IDENTIFICATION			
Operator	KERR-MCGEE OIL & GAS ONSHORE LP	Slot	SLOT#39 ELLIOTT 4C-18HZ (666'FNL & 567'FEL, SEC.18)
Area	COLORADO	Well	ELLIOTT 4C-18HZ
Field	WELD COUNTY (KERR MCGEE)	Wellbore	ELLIOTT 4C-18HZX PWB
Facility	SEC.18-T3N-R67W	Sidetrack from	ELLIOTT 4C-18HZ AWB at 6073.00 MD

WELLPATH DATA (129 stations) † = interpolated/extrapolated station										
MD [ft]	Inclination [°]	Azimuth [°]	TVD [ft]	Vert Sect [ft]	North [ft]	East [ft]	Latitude	Longitude	DLS [°/100ft]	Comments
3942.00	3.370	101.280	3877.29	-519.72	149.17	525.49	40°13'54.424"N	104°55'24.237"W	2.61	
4028.00	1.060	91.950	3963.22	-523.02	148.65	528.77	40°13'54.419"N	104°55'24.194"W	2.71	
4070.78†	0.157	177.806	4006.00	-523.42	148.58	529.17	40°13'54.418"N	104°55'24.189"W	2.48	Sussex
4113.00	1.070	255.030	4048.22	-523.04	148.42	528.79	40°13'54.417"N	104°55'24.194"W	2.48	
4198.00	0.770	260.460	4133.21	-521.72	148.12	527.46	40°13'54.414"N	104°55'24.211"W	0.37	
4283.00	0.870	260.580	4218.20	-520.53	147.92	526.26	40°13'54.412"N	104°55'24.227"W	0.12	
4454.00	1.170	302.320	4389.18	-517.75	148.64	523.50	40°13'54.419"N	104°55'24.262"W	0.46	
4539.00	0.670	285.720	4474.16	-516.52	149.24	522.29	40°13'54.425"N	104°55'24.278"W	0.66	
4624.00	0.770	182.040	4559.16	-516.04	148.80	521.79	40°13'54.420"N	104°55'24.284"W	1.33	
4710.00	0.580	186.260	4645.15	-516.01	147.79	521.72	40°13'54.410"N	104°55'24.285"W	0.23	
4880.00	0.460	188.200	4815.15	-515.87	146.26	521.53	40°13'54.395"N	104°55'24.288"W	0.07	
5051.00	0.580	204.590	4986.14	-515.47	144.79	521.07	40°13'54.381"N	104°55'24.294"W	0.11	
5221.00	0.270	224.780	5156.14	-514.87	143.73	520.43	40°13'54.370"N	104°55'24.302"W	0.20	
5391.00	0.630	273.170	5326.13	-513.66	143.49	519.22	40°13'54.368"N	104°55'24.318"W	0.29	
5562.00	0.120	326.620	5497.13	-512.62	143.69	518.18	40°13'54.370"N	104°55'24.331"W	0.33	
5732.00	0.570	149.310	5667.12	-512.97	143.12	518.51	40°13'54.364"N	104°55'24.327"W	0.41	
5902.00	0.670	150.000	5837.11	-513.96	141.53	519.44	40°13'54.349"N	104°55'24.315"W	0.06	
6073.00	0.280	129.670	6008.11	-514.82	140.40	520.26	40°13'54.337"N	104°55'24.304"W	0.24	
6173.00†	0.280	129.670	6108.11	-515.20	140.08	520.64	40°13'54.334"N	104°55'24.299"W	0.00	
6273.00†	0.280	129.670	6208.11	-515.59	139.77	521.02	40°13'54.331"N	104°55'24.294"W	0.00	
6373.00†	0.280	129.670	6308.10	-515.98	139.46	521.39	40°13'54.328"N	104°55'24.290"W	0.00	
6473.00†	0.280	129.670	6408.10	-516.37	139.15	521.77	40°13'54.325"N	104°55'24.285"W	0.00	
6517.93	0.280	129.670	6453.03	-516.54	139.01	521.94	40°13'54.324"N	104°55'24.282"W	0.00	
6573.00†	4.187	269.749	6508.06	-514.64	138.91	520.03	40°13'54.323"N	104°55'24.307"W	8.00	
6673.00†	12.185	271.291	6606.96	-500.41	139.13	505.81	40°13'54.325"N	104°55'24.490"W	8.00	
6773.00†	20.184	271.618	6702.92	-472.57	139.86	477.96	40°13'54.332"N	104°55'24.849"W	8.00	
6873.00†	28.184	271.764	6794.06	-431.63	141.08	437.05	40°13'54.344"N	104°55'25.377"W	8.00	
6902.76†	30.565	271.793	6820.00	-417.03	141.53	422.46	40°13'54.349"N	104°55'25.565"W	8.00	SSPG
6973.00†	36.184	271.849	6878.63	-378.41	142.76	383.85	40°13'54.361"N	104°55'26.063"W	8.00	
6980.92†	36.818	271.854	6885.00	-373.70	142.91	379.14	40°13'54.362"N	104°55'26.124"W	8.00	NBRR
7060.60†	43.192	271.900	6946.00	-322.50	144.59	327.98	40°13'54.379"N	104°55'26.783"W	8.00	N470_B_CK
7073.00†	44.184	271.907	6954.97	-313.94	144.87	319.42	40°13'54.382"N	104°55'26.894"W	8.00	
7154.41†	50.697	271.943	7010.00	-254.01	146.89	259.52	40°13'54.402"N	104°55'27.666"W	8.00	N700_C_CK
7173.00†	52.184	271.950	7021.59	-239.47	147.38	244.99	40°13'54.406"N	104°55'27.853"W	8.00	
7273.00†	60.184	271.985	7077.19	-156.46	150.23	162.02	40°13'54.435"N	104°55'28.923"W	8.00	
7373.00†	68.184	272.014	7120.71	-66.51	153.37	72.13	40°13'54.466"N	104°55'30.082"W	8.00	
7473.00†	76.184	272.040	7151.28	28.62	156.74	-22.93	40°13'54.499"N	104°55'31.308"W	8.00	
7573.00†	84.184	272.065	7168.31	127.07	160.26	-121.33	40°13'54.534"N	104°55'32.576"W	8.00	
7645.70	90.000	272.082	7172.00	199.65	162.89	-193.86	40°13'54.560"N	104°55'33.511"W	8.00	
7673.00†	90.000	272.082	7172.00	226.95	163.88	-221.14	40°13'54.569"N	104°55'33.863"W	0.00	
7773.00†	90.000	272.082	7172.00	326.95	167.52	-321.07	40°13'54.605"N	104°55'35.152"W	0.00	
7873.00†	90.000	272.082	7172.00	426.95	171.15	-421.01	40°13'54.641"N	104°55'36.440"W	0.00	
7973.00†	90.000	272.082	7172.00	526.95	174.78	-520.94	40°13'54.677"N	104°55'37.729"W	0.00	
8073.00†	90.000	272.083	7172.00	626.95	178.42	-620.87	40°13'54.713"N	104°55'39.017"W	0.00	
8173.00†	90.000	272.083	7172.00	726.95	182.05	-720.81	40°13'54.749"N	104°55'40.306"W	0.00	

REFERENCE WELLPATH IDENTIFICATION			
Operator	KERR-MCGEE OIL & GAS ONSHORE LP	Slot	SLOT#39 ELLIOTT 4C-18HZ (666'FNL & 567'FEL, SEC.18)
Area	COLORADO	Well	ELLIOTT 4C-18HZ
Field	WELD COUNTY (KERR MCGEE)	Wellbore	ELLIOTT 4C-18HZX PWB
Facility	SEC.18-T3N-R67W	Sidetrack from	ELLIOTT 4C-18HZ AWB at 6073.00 MD

WELLPATH DATA (129 stations) † = interpolated/extrapolated station										
MD [ft]	Inclination [°]	Azimuth [°]	TVD [ft]	Vert Sect [ft]	North [ft]	East [ft]	Latitude	Longitude	DLS [°/100ft]	Comments
8273.00†	90.000	272.083	7172.00	826.95	185.68	-820.74	40°13'54.785"N	104°55'41.594"W	0.00	
8373.00†	90.000	272.083	7172.00	926.95	189.32	-920.67	40°13'54.821"N	104°55'42.883"W	0.00	
8473.00†	90.000	272.083	7172.00	1026.95	192.95	-1020.61	40°13'54.857"N	104°55'44.171"W	0.00	
8573.00†	90.000	272.083	7172.00	1126.95	196.59	-1120.54	40°13'54.892"N	104°55'45.460"W	0.00	
8673.00†	90.000	272.083	7172.00	1226.95	200.22	-1220.48	40°13'54.928"N	104°55'46.748"W	0.00	
8773.00†	90.000	272.083	7172.00	1326.95	203.85	-1320.41	40°13'54.964"N	104°55'48.037"W	0.00	
8873.00†	90.000	272.083	7172.00	1426.95	207.49	-1420.34	40°13'55.000"N	104°55'49.325"W	0.00	
8973.00†	90.000	272.083	7172.00	1526.95	211.12	-1520.28	40°13'55.036"N	104°55'50.614"W	0.00	
9073.00†	90.000	272.083	7172.00	1626.95	214.76	-1620.21	40°13'55.072"N	104°55'51.902"W	0.00	
9173.00†	90.000	272.083	7172.00	1726.95	218.39	-1720.15	40°13'55.108"N	104°55'53.190"W	0.00	
9273.00†	90.000	272.083	7172.00	1826.95	222.03	-1820.08	40°13'55.143"N	104°55'54.479"W	0.00	
9373.00†	90.000	272.083	7172.00	1926.95	225.66	-1920.01	40°13'55.179"N	104°55'55.767"W	0.00	
9473.00†	90.000	272.083	7172.00	2026.95	229.29	-2019.95	40°13'55.215"N	104°55'57.056"W	0.00	
9573.00†	90.000	272.083	7172.00	2126.95	232.93	-2119.88	40°13'55.251"N	104°55'58.344"W	0.00	
9673.00†	90.000	272.083	7172.00	2226.95	236.56	-2219.82	40°13'55.287"N	104°55'59.633"W	0.00	
9773.00†	90.000	272.083	7172.00	2326.95	240.20	-2319.75	40°13'55.323"N	104°56'00.921"W	0.00	
9873.00†	90.000	272.083	7172.00	2426.95	243.83	-2419.68	40°13'55.358"N	104°56'02.210"W	0.00	
9973.00†	90.000	272.083	7172.00	2526.95	247.47	-2519.62	40°13'55.394"N	104°56'03.498"W	0.00	
10073.00†	90.000	272.083	7172.00	2626.95	251.10	-2619.55	40°13'55.430"N	104°56'04.787"W	0.00	
10173.00†	90.000	272.083	7172.00	2726.95	254.74	-2719.49	40°13'55.466"N	104°56'06.075"W	0.00	
10273.00†	90.000	272.083	7172.00	2826.95	258.37	-2819.42	40°13'55.502"N	104°56'07.364"W	0.00	
10373.00†	90.000	272.083	7172.00	2926.95	262.01	-2919.35	40°13'55.537"N	104°56'08.652"W	0.00	
10473.00†	90.000	272.083	7172.00	3026.95	265.64	-3019.29	40°13'55.573"N	104°56'09.941"W	0.00	
10573.00†	90.000	272.083	7172.00	3126.95	269.28	-3119.22	40°13'55.609"N	104°56'11.229"W	0.00	
10673.00†	90.000	272.083	7172.00	3226.95	272.91	-3219.16	40°13'55.645"N	104°56'12.518"W	0.00	
10773.00†	90.000	272.083	7172.00	3326.95	276.55	-3319.09	40°13'55.681"N	104°56'13.806"W	0.00	
10873.00†	90.000	272.083	7172.00	3426.95	280.18	-3419.02	40°13'55.716"N	104°56'15.095"W	0.00	
10973.00†	90.000	272.083	7172.00	3526.95	283.82	-3518.96	40°13'55.752"N	104°56'16.383"W	0.00	
11073.00†	90.000	272.083	7172.00	3626.95	287.45	-3618.89	40°13'55.788"N	104°56'17.672"W	0.00	
11173.00†	90.000	272.083	7172.00	3726.95	291.09	-3718.82	40°13'55.824"N	104°56'18.960"W	0.00	
11273.00†	90.000	272.083	7172.00	3826.95	294.72	-3818.76	40°13'55.860"N	104°56'20.249"W	0.00	
11373.00†	90.000	272.083	7172.00	3926.95	298.36	-3918.69	40°13'55.895"N	104°56'21.537"W	0.00	
11473.00†	90.000	272.083	7172.00	4026.95	301.99	-4018.63	40°13'55.931"N	104°56'22.826"W	0.00	
11573.00†	90.000	272.083	7172.00	4126.95	305.63	-4118.56	40°13'55.967"N	104°56'24.114"W	0.00	
11673.00†	90.000	272.083	7172.00	4226.95	309.26	-4218.49	40°13'56.003"N	104°56'25.403"W	0.00	
11773.00†	90.000	272.083	7172.00	4326.95	312.90	-4318.43	40°13'56.038"N	104°56'26.691"W	0.00	
11873.00†	90.000	272.083	7172.00	4426.95	316.53	-4418.36	40°13'56.074"N	104°56'27.980"W	0.00	
11973.00†	90.000	272.083	7172.00	4526.95	320.17	-4518.30	40°13'56.110"N	104°56'29.268"W	0.00	
11999.43	90.000	272.083	7172.00 ¹	4553.38	321.13	-4544.71	40°13'56.119"N	104°56'29.609"W	0.00	

Planned Wellpath Report

ELLIOTT 4C-18HZX (REV-A.0) PWP

Page 5 of 6

REFERENCE WELLPATH IDENTIFICATION

Operator	KERR-MCGEE OIL & GAS ONSHORE LP	Slot	SLOT#39 ELLIOTT 4C-18HZ (666'FNL & 567'FEL, SEC.18)
Area	COLORADO	Well	ELLIOTT 4C-18HZ
Field	WELD COUNTY (KERR MCGEE)	Wellbore	ELLIOTT 4C-18HZX PWB
Facility	SEC.18-T3N-R67W	Sidetrack from	ELLIOTT 4C-18HZ AWB at 6073.00 MD

HOLE & CASING SECTIONS - Ref Wellbore: ELLIOTT 4C-18HZX PWB Ref Wellpath: ELLIOTT 4C-18HZX (REV-A.0) PWP

String/Diameter	Start MD [ft]	End MD [ft]	Interval [ft]	Start TVD [ft]	End TVD [ft]	Start N/S [ft]	Start E/W [ft]	End N/S [ft]	End E/W [ft]
13.5in Open Hole	17.00	1078.00	1061.00	17.00	1077.98	0.00	0.00	-0.82	0.08
9.625in Casing Surface	17.00	1073.00	1056.00	17.00	1072.98	0.00	0.00	-0.81	0.10
8.75in Open Hole	1073.00	7645.70	6572.70	1072.98	7172.00	-0.81	0.10	162.89	-193.86
7in Casing Intermediate	6073.00	7645.70	1572.70	6008.11	7172.00	140.40	520.26	162.89	-193.86
6.125in Open Hole	7645.70	11999.43	4353.73	7172.00	7172.00	162.89	-193.86	321.13	-4544.71
4.5in Casing Production	6073.00	11999.43	5926.43	6008.11	7172.00	140.40	520.26	321.13	-4544.71

TARGETS

Name	MD [ft]	TVD [ft]	North [ft]	East [ft]	Grid East [US ft]	Grid North [US ft]	Latitude	Longitude	Shape
SEC.18-T3N-R67W SECTION LINES		0.00	0.40	-29.86	3160432.31	1327652.08	40°13'52.954"N	104°55'31.397"W	polygon
1) ELLIOTT 4C-18HZ BHL (530'FNL & 50'FWL, SEC.18) REV-2	11999.43	7172.00	321.13	-4544.71	3155915.68	1327943.52	40°13'56.119"N	104°56'29.609"W	point
ELLIOTT 4C-18HZ BHL ON PLAT (560'FNL & 50'FWL, SEC.18) REV-1		7172.00	291.13	-4544.71	3155915.87	1327913.52	40°13'55.823"N	104°56'29.609"W	point
ELLIOTT 4C-18HZ LAND BOX		7172.00	0.00	0.00	3160462.17	1327651.87	40°13'52.950"N	104°55'31.012"W	polygon
HSR-ELLIOTT FARMS (128' CIRCLE)		8817.00	-39.24	-1307.82	3159154.69	1327604.15	40°13'52.562"N	104°55'47.874"W	circle

SURVEY PROGRAM - Ref Wellbore: ELLIOTT 4C-18HZX PWB Ref Wellpath: ELLIOTT 4C-18HZX (REV-A.0) PWP

Start MD [ft]	End MD [ft]	Positional Uncertainty Model	Log Name/Comment	Wellbore
17.00	986.00	Generic gyro - continuous (Standard)		ELLIOTT 4C-18HZ AWB
986.00	6073.00	NaviTrak (IFR)		ELLIOTT 4C-18HZ AWB
6073.00	11999.43	NaviTrak (IFR)		ELLIOTT 4C-18HZX PWB

REFERENCE WELLPATH IDENTIFICATION			
Operator	KERR-MCGEE OIL & GAS ONSHORE LP	Slot	SLOT#39 ELLIOTT 4C-18HZ (666'FNL & 567'FEL, SEC.18)
Area	COLORADO	Well	ELLIOTT 4C-18HZ
Field	WELD COUNTY (KERR MCGEE)	Wellbore	ELLIOTT 4C-18HZX PWB
Facility	SEC.18-T3N-R67W	Sidetrack from	ELLIOTT 4C-18HZ AWB at 6073.00 MD

WELLPATH COMMENTS					
MD [ft]	Inclination [°]	Azimuth [°]	TVD [ft]	Comment	
750.01	0.246	318.445	750.00	Fox Hills Base	
3614.28	8.634	81.612	3552.00	Parkman	
4070.78	0.157	177.806	4006.00	Sussex	
6902.76	30.565	271.793	6820.00	SSPG	
6980.92	36.818	271.854	6885.00	NBRR	
7060.60	43.192	271.900	6946.00	N470_B_CK	
7154.41	50.697	271.943	7010.00	N700_C_CK	

DESIGN COMMENTS					
MD [ft]	Inclination [°]	Azimuth [°]	TVD [ft]	Comment	
6073.00	0.280	129.670	6008.11	TIE-ON INTO BHI MWD+IFR SURVEYS	
6517.93	0.280	129.670	6453.03	KOP, BUILD @ 8°/100'	
7645.70	90.000	272.082	7172.00	LANDING POINT	
11999.43	90.000	272.083	7172.00	TOTAL DEPTH	