

**ANADARKO PETROLEUM CORP - EBUS
DO NOT MAIL - PO BOX 4995
THE WOODLANDS, Texas**

Paragon 24C-31HZ

Majors 29

Post Job Summary **Cement Surface Casing**

Prepared for:
Date Prepared: 12/26/2013
Version: 1

Service Supervisor: FANTASIA, JOSEPH

Submitted by: FINNEY, SEAN

HALLIBURTON

HALLIBURTON

Wellbore Geometry

Job Tubulars					MD		Shoe Joint Length ft
Type	Description	Size in	ID in	Wt lbm/ft	Top ft	Bottom ft	
Casing	9 5/8" Surface Casing	9.63	8.921	36.00	0.00	1,039.00	45.00
Open Hole Section	13 1/2" Open Hole Section		13.500		0.00	1,039.00	0.00

HALLIBURTON

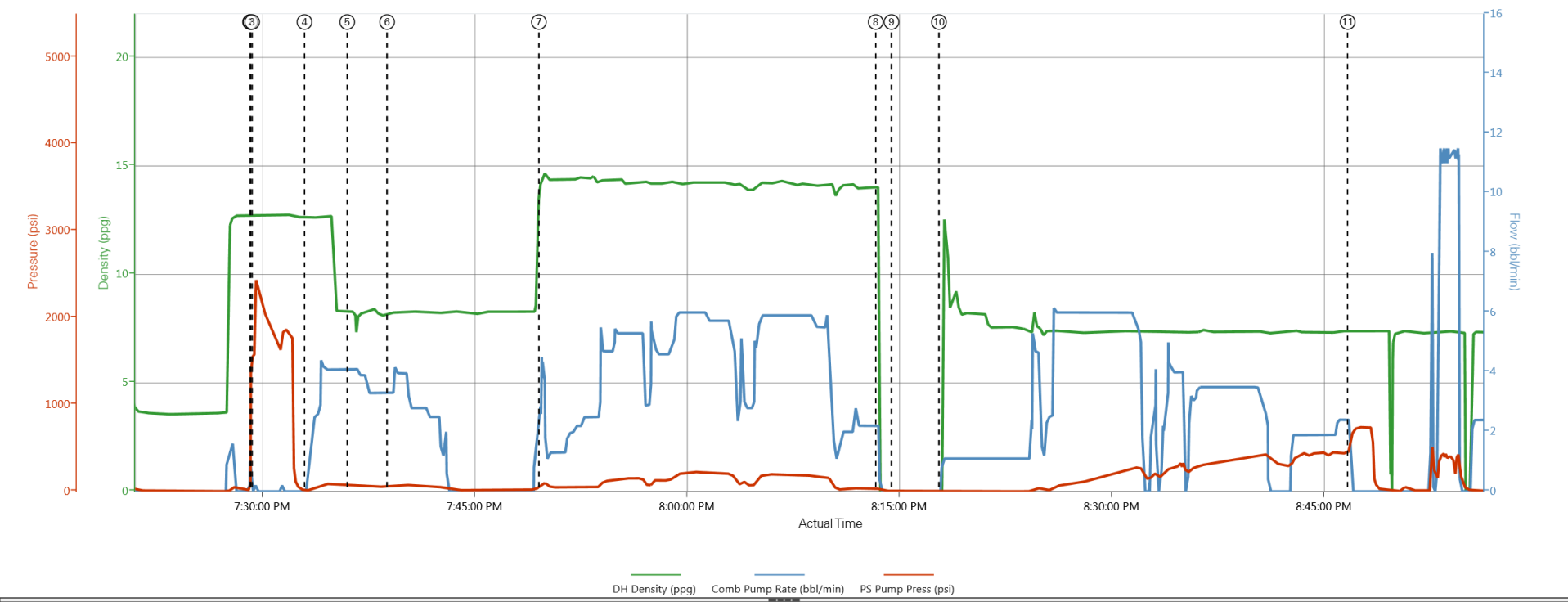
Pumping Schedule

Stage /Plug #	Fluid #	Fluid Type	Fluid Name	Surface Density lbm/gal	Avg Rate bbl/min	Surface Volume	Downhole Volume
1	1	Spacer	Fresh Water Spacer	8.33	5.00	10.0 bbl	10.0 bbl
1	2	Spacer	Mud Flush	8.40	5.00	12.0 bbl	12.0 bbl
1	1	Spacer	Fresh Water Spacer	8.33	5.00	10.0 bbl	10.0 bbl
1	3	Cement Slurry	SwiftCem B2	14.20	6.00	411.0 sacks	411.0 sacks

HALLIBURTON

Data Acquisition

ANADARKO PARAGON 24C-31HZ



- ① Start Job 12.73;0;1567
- ② Start Job 12.75;0;1575
- ③ Test Lines 12.73;0;1577
- ④ Pump Spacer 1 12.63;0;11
- ⑤ Pump Spacer 2 8.25;4.1;78
- ⑥ Pump Spacer 1 8.18;3.3;61
- ⑦ Pump Cement 14.34;4.2;76
- ⑧ Shutdown 14;2.2;31
- ⑨ Drop Top Plug -0.8;0;6
- ⑩ Pump Displacement -0.84;0.8;4
- ⑪ Bump Plug 7.38;2.4;512

HALLIBURTON

Service Supervisor Reports

Job Log

Date/Time	Chart #	Activity Code	Pump Rate	Cum Vol	Pump		Pressure (psig)		Comments
12/09/2013 18:00		Arrive at Location from Service Center							ARRIVE AT LOCATION RIG READY FOR CEMENT.
12/09/2013 18:15		Assessment Of Location Safety Meeting							PERFORM SITE ASSESSMENT AND HAZARD HUNT WITH CREW PRIOR TO SPOTTING EQUIPMENT AND RIGGING UP.
12/09/2013 19:00		Start Job							PERFROM PRE-JOB SAFETY MEETING WITH ALL PRESENT PERSONELL PRIOR TO JOB
12/09/2013 19:29		Test Lines						1930.0	PRESSURE TEST LINES TO 2000 PSI.
12/09/2013 19:33		Pump Spacer 1	5	10				78.0	PUMP 10 BBLS WATER
12/09/2013 19:36		Pump Spacer 2	5	12				70.0	PUMP 12 BBLS MUDFLUSH
12/09/2013 19:38		Pump Spacer 1	5	10				90.0	PUMP 10 BBLS WATER
12/09/2013 19:49		Pump Cement	6	112				61.0	411SKS SWIFTCCEM MIXED AT 14.2 PPG USING RIG WATER
12/09/2013 20:13		Shutdown							
12/09/2013 20:14		Drop Top Plug							PLUG PRELOADED
12/09/2013 20:17		Pump Displacement	6	78				50.0	GOOD RETURNS THROUGHOUT. CEMENT TO SURFACE AT 68 BBLS INTO 78 BBLS TOTAL DISPLACEMENT. APPROX 10 BBLS CEMENT TO SURFACE.
12/09/2013 20:46		Bump Plug	3					460.0	PLUG LANDED AT 460 PSI. PRESSURE BROUGHT TO 800 PSI AND HELD 3 MIN.
12/09/2013 20:49		Check Floats							FLOATS HELD
12/09/2013 21:00		End Job							PERFROM PRE RIG DOWN SAFETY MEETING

The Road to Excellence Starts with Safety

Sold To #: 300466	Ship To #: 3209412	Quote #:	Sales Order #: 900959242
Customer: ANADARKO PETROLEUM CORP - EBUS		Customer Rep: Case, Randy	
Well Name: Paragon		Well #: 24C-31HZ	API/UWI #: 05-123-38538
Field: WATTENBURG	City (SAP): BRIGHTON	County/Parish: Weld	State: Colorado
Lat: N 40.074 deg. OR N 40 deg. 4 min. 27.89 secs.		Long: W 104.698 deg. OR W -105 deg. 18 min. 5.659 secs.	
Contractor: Majors		Rig/Platform Name/Num: Majors 29	
Job Purpose: Cement Surface Casing			
Well Type: Development Well		Job Type: Cement Surface Casing	
Sales Person: PLIENESS, RYAN		Srvc Supervisor: FANTASIA, JOSEPH	MBU ID Emp #: 485445

Job Personnel

HES Emp Name	Exp Hrs	Emp #	HES Emp Name	Exp Hrs	Emp #	HES Emp Name	Exp Hrs	Emp #
FANTASIA, JOSEPH Brandon	4.0	485445	GRIFFITHS, ZACHARY Sakae	4.0	551430	HINKLE, BRADLEY Dean	4.0	512123
SAUCEDA, JIMMY	4.0	1						

Equipment

HES Unit #	Distance-1 way	HES Unit #	Distance-1 way	HES Unit #	Distance-1 way	HES Unit #	Distance-1 way
11064046C	9 mile	11410470C	9 mile	11566182	9 mile	11645065	9 mile

Job Hours

Date	On Location Hours	Operating Hours	Date	On Location Hours	Operating Hours	Date	On Location Hours	Operating Hours
TOTAL			Total is the sum of each column separately					

Job

Job Times

Formation Name										Date	Time	Time Zone
Formation Depth (MD)		Top			Bottom				Called Out	09 - Dec - 2013	15:00	MST
Form Type			BHST						On Location	09 - Dec - 2013	18:00	MST
Job depth MD		1039. ft		Job Depth TVD		1039. ft			Job Started	09 - Dec - 2013	17:00	MST
Water Depth					Wk Ht Above Floor				Job Completed	09 - Dec - 2013	21:00	MST
Perforation Depth (MD)		From			To				Departed Loc	09 - Dec - 2013	22:00	MST

Well Data

Description	New / Used	Max pressure psig	Size in	ID in	Weight lbm/ft	Thread	Grade	Top MD ft	Bottom MD ft	Top TVD ft	Bottom TVD ft
13 1/2" Open Hole Section				13.5				.	1039.		
9 5/8" Surface Casing	Unknown		9.625	8.921	36.		J-55	.	1039.		

Fluid Data

Stage/Plug #: 1

Fluid #	Stage Type	Fluid Name	Qty	Qty uom	Mixing Density lbm/gal	Yield ft ³ /sk	Mix Fluid Gal/sk	Rate bbl/min	Total Mix Fluid Gal/sk
---------	------------	------------	-----	---------	------------------------	---------------------------	------------------	--------------	------------------------

1	Fresh Water Spacer		10.00	bbl	8.33			5.0	
2	Mud Flush		12.00	bbl	8.4			5.0	
3.5 lbm/bbl		MUD FLUSH III, 40 LB SACK (101633304)							
42 gal/bbl		MUD FLUSH III - SBM (528788)							
1	Fresh Water Spacer		10.00	bbl	8.33			5.0	
3	SwiftCem B2	SWIFTCEM (TM) SYSTEM (452990)	411.0	sacks	14.2	1.54	7.66	6.0	7.66
7.66 Gal		FRESH WATER							
Calculated Values		Pressures		Volumes					
Displacement		Shut In: Instant		Lost Returns		Cement Slurry		Pad	
Top Of Cement		5 Min		Cement Returns		10		Actual Displacement	
Frac Gradient		15 Min		Spacers		32		Load and Breakdown	
78								Treatment	
								Total Job	
Rates									
Circulating		Mixing		Displacement		Avg. Job			
Cement Left In Pipe		Amount		45 ft		Reason		Shoe Joint	
Frac Ring # 1 @		ID		Frac ring # 2 @		ID		Frac Ring # 3 @	
								Frac Ring # 4 @	
								ID	
The Information Stated Herein Is Correct				Customer Representative Signature					

