



**Scientific
Drilling**

Survey Certification

7327 West Barton Road
Casper, WY 82604
(307)-472-6621 Fax (307) 472-5439

Operator	KP Kauffman Co, Inc.
Well Name & No.	Yoxall Farms #10
County & State	McKenzie County, ND
SDI Job No.	410913K61978
Rig	Ground Level
Survey Date	26-Sep-2013

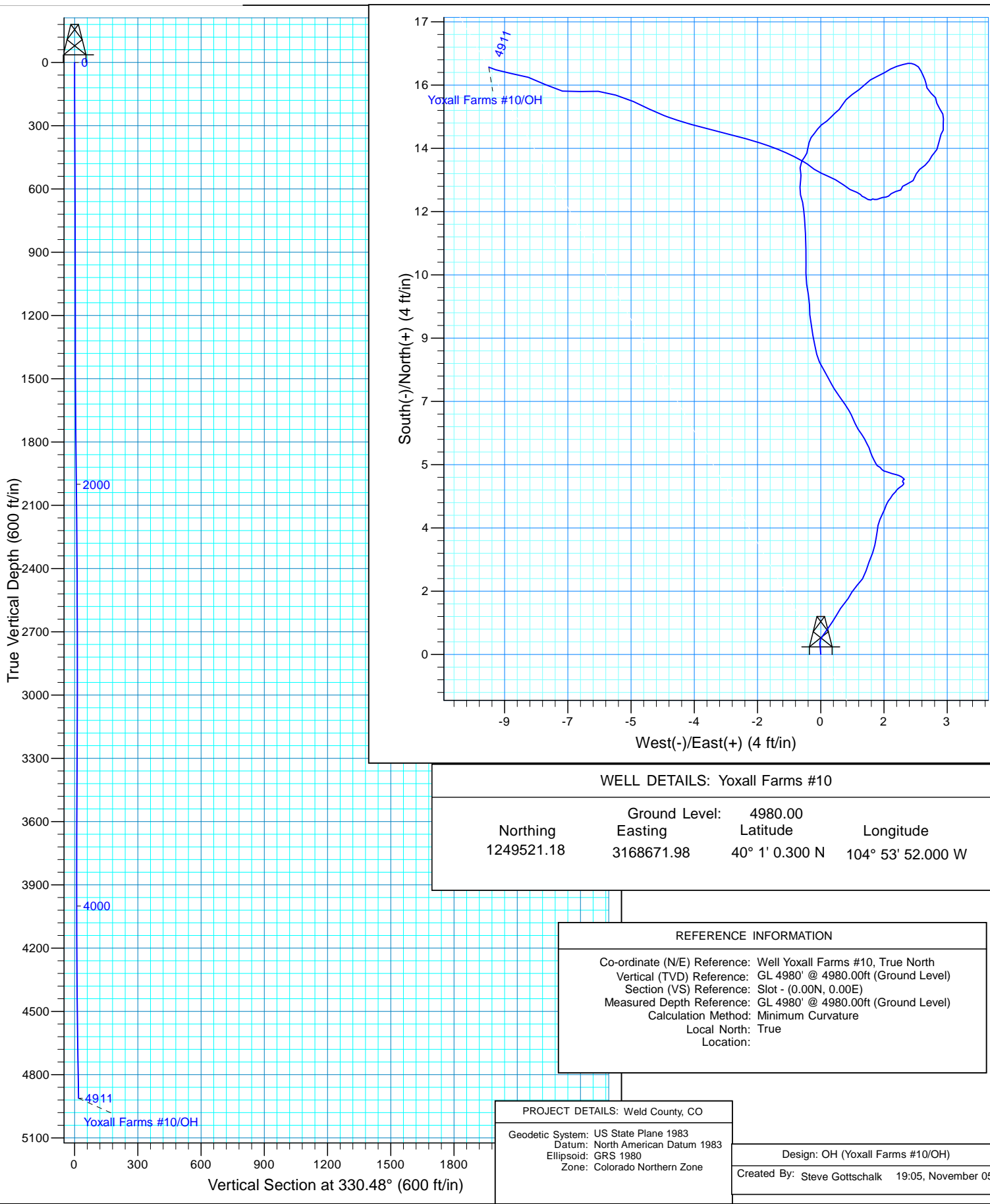
I, Steven F. Gottschalk, having personal knowledge of all the facts, hereby certify that the attached directional survey run from a measured depth of 0 feet to a measured depth of 4911.3 feet is true and correct as determined from all available records.


Signature

5-Nov-2013
Date

Steven F. Gottschalk
Rockies Region Well Planner
Scientific Drilling - Rocky Mountain District

Project: Weld County, CO
Site: Yoxall Farms
Well: Yoxall Farms #10
Wellbore: OH
Design: OH



WELL DETAILS: Yoxall Farms #10

Ground Level:	4980.00		
Northing	Easting	Latitude	Longitude
1249521.18	3168671.98	40° 1' 0.300 N	104° 53' 52.000 W

REFERENCE INFORMATION

Co-ordinate (N/E) Reference: Well Yoxall Farms #10, True North
Vertical (TVD) Reference: GL 4980' @ 4980.00ft (Ground Level)
Section (VS) Reference: Slot - (0.00N, 0.00E)
Measured Depth Reference: GL 4980' @ 4980.00ft (Ground Level)
Calculation Method: Minimum Curvature
Local North: True
Location:

PROJECT DETAILS: Weld County, CO

Geodetic System: US State Plane 1983
Datum: North American Datum 1983
Ellipsoid: GRS 1980
Zone: Colorado Northern Zone

Design: OH (Yoxall Farms #10/OH)

Created By: Steve Gottschalk 19:05, November 05 013

KP Kauffman Co, Inc.

Weld County, CO

Yoxall Farms

Yoxall Farms #10

OH

Design: OH

Standard Survey Report

05 November, 2013



Scientific Drilling International

Survey Report

Company:	KP Kauffman Co, Inc.	Local Co-ordinate Reference:	Well Yoxall Farms #10
Project:	Weld County, CO	TVD Reference:	GL 4980' @ 4980.00ft (Ground Level)
Site:	Yoxall Farms	MD Reference:	GL 4980' @ 4980.00ft (Ground Level)
Well:	Yoxall Farms #10	North Reference:	True
Wellbore:	OH	Survey Calculation Method:	Minimum Curvature
Design:	OH	Database:	Casper District

Project	Weld County, CO		
Map System:	US State Plane 1983	System Datum:	Mean Sea Level
Geo Datum:	North American Datum 1983		
Map Zone:	Colorado Northern Zone		

Site		Yoxall Farms			
Site Position:		Northing:	1,249,521.18 usft	Latitude:	40° 1' 0.300 N
From:	Lat/Long	Easting:	3,168,671.98 usft	Longitude:	104° 53' 52.000 W
Position Uncertainty:	0.00 ft	Slot Radius:	13.200 in	Grid Convergence:	0.39 °

Well	Yoxall Farms #10, 460' FNL, 660' FEL SEC 28 T1N R97W					
Well Position	+N/-S	0.00 ft	Northing:	1,249,521.17 usft	Latitude:	40° 1' 0.300 N
	+E/-W	0.00 ft	Easting:	3,168,671.98 usft	Longitude:	104° 53' 52.000 W
Position Uncertainty		0.00 ft	Wellhead Elevation:	0.00 ft	Ground Level:	4,980.00 ft

Wellbore	OH				
Magnetics	Model Name	Sample Date	Declination (°)	Dip Angle (°)	Field Strength (nT)
	BGGM2013	9/26/2013	8.63	66.63	52,601

Design	OH				
Audit Notes:					
Version:	1.0	Phase:	ACTUAL	Tie On Depth:	0.00
Vertical Section:	Depth From (TVD) (ft)	+N/-S (ft)	+E/-W (ft)	Direction (°)	
	0.00	0.00	0.00	330.48	

Survey Program	Date	11/5/2013			
From (ft)	To (ft)	Survey (Wellbore)	Tool Name	Description	
99.90	4,911.30	Survey #1Surface Gyros (OH)	SDI Standard Keeper 103	SDI Standard Wireline Keeper ver 1.0.3	

Survey									
Measured Depth (ft)	Inclination (°)	Azimuth (°)	Vertical Depth (ft)	+N/-S (ft)	+E/-W (ft)	Vertical Section (ft)	Dogleg Rate (°/100ft)	Build Rate (°/100ft)	Turn Rate (°/100ft)
0.00	0.00	0.00	0.00	0.00	0.00	0.00	0.00	0.00	0.00
99.90	0.23	355.78	99.90	0.20	-0.01	0.18	0.23	0.23	0.00
First SDI Gyro Survey									
124.36	0.24	353.01	124.36	0.30	-0.02	0.27	0.06	0.04	-11.32
149.39	0.29	23.19	149.39	0.41	-0.01	0.36	0.58	0.20	120.58
174.32	0.35	37.13	174.32	0.53	0.06	0.43	0.39	0.24	55.92
199.13	0.34	33.96	199.13	0.65	0.15	0.49	0.09	-0.04	-12.78
224.21	0.35	34.25	224.21	0.78	0.24	0.56	0.04	0.04	1.16
249.46	0.45	32.46	249.46	0.92	0.33	0.64	0.40	0.40	-7.09
274.39	0.49	31.95	274.39	1.10	0.44	0.74	0.16	0.16	-2.05
299.33	0.47	30.85	299.33	1.27	0.55	0.84	0.09	-0.08	-4.41

Scientific Drilling International

Survey Report

Company:	KP Kauffman Co, Inc.	Local Co-ordinate Reference:	Well Yoxall Farms #10
Project:	Weld County, CO	TVD Reference:	GL 4980' @ 4980.00ft (Ground Level)
Site:	Yoxall Farms	MD Reference:	GL 4980' @ 4980.00ft (Ground Level)
Well:	Yoxall Farms #10	North Reference:	True
Wellbore:	OH	Survey Calculation Method:	Minimum Curvature
Design:	OH	Database:	Casper District

Survey									
Measured Depth (ft)	Inclination (°)	Azimuth (°)	Vertical Depth (ft)	+N/-S (ft)	+E/-W (ft)	Vertical Section (ft)	Dogleg Rate (°/100ft)	Build Rate (°/100ft)	Turn Rate (°/100ft)
323.84	0.37	45.83	323.83	1.42	0.66	0.91	0.60	-0.41	61.12
348.78	0.41	27.82	348.77	1.55	0.76	0.98	0.51	0.16	-72.21
373.80	0.53	32.26	373.79	1.73	0.86	1.08	0.50	0.48	17.75
398.72	0.55	43.86	398.71	1.91	1.01	1.17	0.45	0.08	46.55
423.40	0.55	33.35	423.39	2.10	1.15	1.26	0.41	0.00	-42.59
449.66	0.54	16.63	449.65	2.32	1.26	1.40	0.60	-0.04	-63.67
474.54	0.63	19.59	474.53	2.56	1.34	1.57	0.38	0.36	11.90
499.57	0.60	22.71	499.56	2.81	1.43	1.74	0.18	-0.12	12.47
524.23	0.45	7.96	524.22	3.03	1.50	1.90	0.81	-0.61	-59.81
549.23	0.45	12.97	549.22	3.22	1.53	2.05	0.16	0.00	20.04
574.41	0.38	3.42	574.39	3.40	1.56	2.19	0.39	-0.28	-37.93
599.61	0.40	13.26	599.59	3.57	1.59	2.32	0.28	0.08	39.05
623.97	0.41	23.14	623.95	3.73	1.64	2.44	0.29	0.04	40.56
649.01	0.37	23.46	648.99	3.89	1.71	2.54	0.16	-0.16	1.28
673.81	0.30	25.35	673.79	4.02	1.77	2.63	0.29	-0.28	7.62
699.00	0.28	17.94	698.98	4.14	1.81	2.71	0.17	-0.08	-29.42
724.13	0.25	39.14	724.11	4.24	1.87	2.77	0.41	-0.12	84.36
749.20	0.25	33.64	749.18	4.33	1.93	2.81	0.10	0.00	-21.94
774.00	0.23	31.85	773.98	4.41	1.99	2.86	0.09	-0.08	-7.22
799.13	0.17	56.90	799.11	4.48	2.05	2.89	0.42	-0.24	99.68
824.26	0.06	10.80	824.24	4.51	2.08	2.90	0.54	-0.44	-183.45
849.08	0.06	28.55	849.06	4.53	2.09	2.92	0.07	0.00	71.51
874.28	0.27	49.04	874.26	4.58	2.14	2.94	0.85	0.83	81.31
899.39	0.13	56.96	899.37	4.64	2.21	2.95	0.57	-0.56	31.54
924.37	0.15	52.06	924.35	4.67	2.26	2.96	0.09	0.08	-19.62
949.20	0.11	23.52	949.18	4.72	2.29	2.97	0.30	-0.16	-114.94
974.33	0.05	313.80	974.31	4.75	2.29	3.00	0.41	-0.24	-277.44
999.40	0.02	295.97	999.38	4.76	2.28	3.01	0.13	-0.12	-71.12
1,024.09	0.13	332.60	1,024.07	4.78	2.27	3.05	0.46	0.45	148.36
1,049.21	0.14	59.14	1,049.19	4.82	2.28	3.07	0.74	0.04	344.51
1,073.94	0.04	55.15	1,073.92	4.84	2.31	3.08	0.40	-0.40	-16.13
1,098.74	0.18	308.16	1,098.72	4.87	2.29	3.11	0.79	0.56	-431.41
1,124.42	0.15	304.90	1,124.40	4.92	2.23	3.18	0.12	-0.12	-12.69
1,148.76	0.18	290.41	1,148.74	4.95	2.17	3.24	0.21	0.12	-59.53
1,173.92	0.17	285.91	1,173.90	4.97	2.09	3.30	0.07	-0.04	-17.89
1,199.85	0.15	283.31	1,199.83	4.99	2.02	3.35	0.08	-0.08	-10.03
1,224.28	0.13	283.72	1,224.26	5.01	1.97	3.39	0.08	-0.08	1.68
1,249.07	0.16	295.36	1,249.05	5.03	1.91	3.43	0.17	0.12	46.95
1,273.77	0.26	282.31	1,273.75	5.05	1.82	3.50	0.45	0.40	-52.83
1,299.32	0.12	304.00	1,299.30	5.08	1.74	3.56	0.61	-0.55	84.89
1,324.01	0.17	311.58	1,323.99	5.12	1.69	3.62	0.22	0.20	30.70
1,348.95	0.19	322.20	1,348.93	5.18	1.64	3.70	0.16	0.08	42.58
1,374.95	0.08	244.53	1,374.93	5.20	1.60	3.74	0.73	-0.42	-298.73

Scientific Drilling International

Survey Report

Company:	KP Kauffman Co, Inc.	Local Co-ordinate Reference:	Well Yoxall Farms #10
Project:	Weld County, CO	TVD Reference:	GL 4980' @ 4980.00ft (Ground Level)
Site:	Yoxall Farms	MD Reference:	GL 4980' @ 4980.00ft (Ground Level)
Well:	Yoxall Farms #10	North Reference:	True
Wellbore:	OH	Survey Calculation Method:	Minimum Curvature
Design:	OH	Database:	Casper District

Survey										
Measured Depth (ft)	Inclination (°)	Azimuth (°)	Vertical Depth (ft)	+N/-S (ft)	+E/-W (ft)	Vertical Section (ft)	Dogleg Rate (°/100ft)	Build Rate (°/100ft)	Turn Rate (°/100ft)	
1,399.23	0.18	323.72	1,399.21	5.23	1.56	3.78	0.75	0.41	326.15	
1,424.02	0.22	332.34	1,424.00	5.30	1.52	3.87	0.20	0.16	34.77	
1,449.94	0.26	335.22	1,449.92	5.40	1.47	3.97	0.16	0.15	11.11	
1,474.76	0.23	329.51	1,474.74	5.49	1.42	4.08	0.16	-0.12	-23.01	
1,499.45	0.30	348.63	1,499.43	5.60	1.38	4.19	0.45	0.28	77.44	
1,524.70	0.29	332.33	1,524.68	5.72	1.34	4.32	0.33	-0.04	-64.55	
1,549.11	0.32	331.35	1,549.09	5.83	1.28	4.45	0.12	0.12	-4.01	
1,574.72	0.34	336.91	1,574.70	5.97	1.21	4.59	0.15	0.08	21.71	
1,599.42	0.35	318.10	1,599.40	6.09	1.13	4.74	0.46	0.04	-76.15	
1,623.87	0.44	330.02	1,623.85	6.23	1.04	4.91	0.50	0.37	48.75	
1,649.04	0.40	335.15	1,649.02	6.39	0.95	5.09	0.22	-0.16	20.38	
1,674.62	0.53	337.80	1,674.60	6.58	0.87	5.30	0.51	0.51	10.36	
1,699.34	0.44	326.19	1,699.31	6.77	0.77	5.51	0.54	-0.36	-46.97	
1,723.61	0.45	326.23	1,723.58	6.92	0.67	5.69	0.04	0.04	0.16	
1,749.66	0.47	323.59	1,749.63	7.09	0.55	5.90	0.11	0.08	-10.13	
1,774.27	0.51	327.69	1,774.24	7.27	0.43	6.11	0.22	0.16	16.66	
1,799.12	0.53	328.70	1,799.09	7.46	0.31	6.34	0.09	0.08	4.06	
1,824.95	0.54	334.58	1,824.92	7.67	0.20	6.58	0.22	0.04	22.76	
1,849.41	0.59	327.88	1,849.38	7.88	0.08	6.82	0.34	0.20	-27.39	
1,874.18	0.50	335.01	1,874.15	8.09	-0.03	7.05	0.45	-0.36	28.78	
1,898.86	0.56	346.65	1,898.83	8.30	-0.11	7.28	0.50	0.24	47.16	
1,924.84	0.62	348.46	1,924.81	8.56	-0.16	7.53	0.24	0.23	6.97	
1,949.17	0.66	349.64	1,949.13	8.83	-0.22	7.79	0.17	0.16	4.85	
1,973.90	0.63	351.96	1,973.86	9.10	-0.26	8.05	0.16	-0.12	9.38	
1,999.84	0.68	352.08	1,999.80	9.40	-0.30	8.33	0.19	0.19	0.46	
2,024.47	0.62	4.28	2,024.43	9.68	-0.31	8.57	0.61	-0.24	49.53	
2,049.60	0.69	344.57	2,049.56	9.96	-0.34	8.83	0.93	0.28	-78.43	
2,073.92	0.69	357.23	2,073.88	10.25	-0.39	9.11	0.63	0.00	52.06	
2,099.42	0.69	354.92	2,099.37	10.55	-0.41	9.38	0.11	0.00	-9.06	
2,124.96	0.69	4.66	2,124.91	10.86	-0.41	9.65	0.46	0.00	38.14	
2,149.23	0.72	356.26	2,149.18	11.16	-0.41	9.91	0.44	0.12	-34.61	
2,174.44	0.67	1.77	2,174.39	11.46	-0.41	10.18	0.33	-0.20	21.86	
2,199.94	0.72	354.28	2,199.89	11.77	-0.42	10.45	0.41	0.20	-29.37	
2,224.20	0.62	353.70	2,224.14	12.05	-0.45	10.71	0.41	-0.41	-2.39	
2,249.70	0.48	359.51	2,249.64	12.30	-0.47	10.93	0.59	-0.55	22.78	
2,273.95	0.53	346.06	2,273.89	12.51	-0.50	11.13	0.53	0.21	-55.46	
2,299.13	0.46	340.81	2,299.07	12.71	-0.56	11.34	0.33	-0.28	-20.85	
2,324.86	0.51	9.55	2,324.80	12.93	-0.57	11.53	0.95	0.19	111.70	
2,349.84	0.41	358.98	2,349.78	13.12	-0.56	11.70	0.52	-0.40	-42.31	
2,374.33	0.22	18.23	2,374.27	13.26	-0.54	11.80	0.88	-0.78	78.60	
2,399.81	0.29	332.44	2,399.75	13.36	-0.56	11.90	0.82	0.27	-179.71	
2,423.46	0.24	17.88	2,423.40	13.46	-0.57	11.99	0.89	-0.21	192.14	
2,449.94	0.20	9.36	2,449.88	13.56	-0.55	12.07	0.19	-0.15	-32.18	

Scientific Drilling International

Survey Report

Company:	KP Kauffman Co, Inc.	Local Co-ordinate Reference:	Well Yoxall Farms #10
Project:	Weld County, CO	TVD Reference:	GL 4980' @ 4980.00ft (Ground Level)
Site:	Yoxall Farms	MD Reference:	GL 4980' @ 4980.00ft (Ground Level)
Well:	Yoxall Farms #10	North Reference:	True
Wellbore:	OH	Survey Calculation Method:	Minimum Curvature
Design:	OH	Database:	Casper District

Survey									
Measured Depth (ft)	Inclination (°)	Azimuth (°)	Vertical Depth (ft)	+N/-S (ft)	+E/-W (ft)	Vertical Section (ft)	Dogleg Rate (°/100ft)	Build Rate (°/100ft)	Turn Rate (°/100ft)
2,473.97	0.27	21.72	2,473.91	13.65	-0.52	12.14	0.36	0.29	51.44
2,499.66	0.32	45.36	2,499.60	13.76	-0.45	12.19	0.51	0.19	92.02
2,524.07	0.31	9.76	2,524.01	13.87	-0.39	12.26	0.79	-0.04	-145.84
2,549.75	0.30	16.74	2,549.69	14.00	-0.36	12.36	0.15	-0.04	27.18
2,573.82	0.05	340.79	2,573.76	14.08	-0.34	12.42	1.09	-1.04	-149.36
2,599.49	0.36	15.71	2,599.43	14.16	-0.32	12.48	1.25	1.21	136.03
2,623.93	0.34	30.19	2,623.87	14.30	-0.27	12.57	0.37	-0.08	59.25
2,649.57	0.38	45.47	2,649.51	14.43	-0.17	12.63	0.40	0.16	59.59
2,673.99	0.27	22.36	2,673.93	14.54	-0.09	12.69	0.69	-0.45	-94.64
2,699.34	0.45	54.15	2,699.28	14.65	0.02	12.74	1.04	0.71	125.40
2,723.80	0.43	56.31	2,723.73	14.76	0.17	12.76	0.11	-0.08	8.83
2,749.48	0.34	33.98	2,749.41	14.87	0.29	12.80	0.67	-0.35	-86.95
2,773.90	0.34	54.26	2,773.83	14.98	0.39	12.84	0.49	0.00	83.05
2,799.60	0.36	42.95	2,799.53	15.08	0.51	12.87	0.28	0.08	-44.01
2,824.92	0.32	27.15	2,824.85	15.20	0.60	12.93	0.40	-0.16	-62.40
2,849.43	0.52	41.84	2,849.36	15.34	0.70	13.01	0.92	0.82	59.93
2,873.82	0.52	56.63	2,873.75	15.49	0.87	13.05	0.55	0.00	60.64
2,899.46	0.50	51.08	2,899.39	15.62	1.05	13.07	0.21	-0.08	-21.65
2,923.56	0.51	47.92	2,923.49	15.76	1.21	13.12	0.12	0.04	-13.11
2,949.21	0.43	53.63	2,949.14	15.89	1.38	13.15	0.36	-0.31	22.26
2,974.92	0.59	68.06	2,974.85	16.00	1.58	13.15	0.79	0.62	56.13
2,998.92	0.46	57.00	2,998.85	16.10	1.77	13.14	0.68	-0.54	-46.08
3,024.21	0.39	59.64	3,024.14	16.20	1.93	13.14	0.29	-0.28	10.44
3,049.41	0.46	72.71	3,049.33	16.27	2.10	13.12	0.47	0.28	51.87
3,074.43	0.38	75.64	3,074.35	16.32	2.28	13.08	0.33	-0.32	11.71
3,099.63	0.27	77.87	3,099.55	16.35	2.42	13.04	0.44	-0.44	8.85
3,123.84	0.20	114.18	3,123.76	16.35	2.51	12.99	0.66	-0.29	149.98
3,148.99	0.22	99.39	3,148.91	16.32	2.60	12.92	0.23	0.08	-58.81
3,174.39	0.37	138.14	3,174.31	16.25	2.70	12.81	0.95	0.59	152.56
3,199.69	0.26	159.57	3,199.61	16.14	2.78	12.68	0.63	-0.43	84.70
3,224.59	0.34	149.77	3,224.51	16.02	2.83	12.55	0.38	0.32	-39.36
3,249.84	0.26	166.01	3,249.76	15.90	2.89	12.42	0.46	-0.32	64.32
3,274.00	0.17	164.61	3,273.92	15.81	2.91	12.33	0.37	-0.37	-5.79
3,299.34	0.49	167.33	3,299.26	15.67	2.94	12.19	1.26	1.26	10.73
3,324.71	0.48	116.26	3,324.63	15.52	3.06	12.00	1.65	-0.04	-201.30
3,349.93	0.35	161.56	3,349.85	15.40	3.18	11.83	1.35	-0.52	179.62
3,375.00	0.34	171.54	3,374.92	15.25	3.21	11.69	0.24	-0.04	39.81
3,399.19	0.44	139.98	3,399.11	15.11	3.29	11.53	0.96	0.41	-130.47
3,424.42	0.42	160.55	3,424.34	14.95	3.38	11.34	0.61	-0.08	81.53
3,449.73	0.21	195.54	3,449.65	14.82	3.40	11.22	1.09	-0.83	138.25
3,473.73	0.47	175.71	3,473.65	14.68	3.39	11.10	1.17	1.08	-82.63
3,498.73	0.32	187.23	3,498.65	14.51	3.39	10.95	0.68	-0.60	46.08
3,523.99	0.32	227.67	3,523.91	14.39	3.33	10.88	0.88	0.00	160.10
3,549.29	0.58	178.02	3,549.21	14.21	3.28	10.75	1.76	1.03	-196.25

Scientific Drilling International

Survey Report

Company:	KP Kauffman Co, Inc.	Local Co-ordinate Reference:	Well Yoxall Farms #10
Project:	Weld County, CO	TVD Reference:	GL 4980' @ 4980.00ft (Ground Level)
Site:	Yoxall Farms	MD Reference:	GL 4980' @ 4980.00ft (Ground Level)
Well:	Yoxall Farms #10	North Reference:	True
Wellbore:	OH	Survey Calculation Method:	Minimum Curvature
Design:	OH	Database:	Casper District

Survey									
Measured Depth (ft)	Inclination (°)	Azimuth (°)	Vertical Depth (ft)	+N/-S (ft)	+E/-W (ft)	Vertical Section (ft)	Dogleg Rate (°/100ft)	Build Rate (°/100ft)	Turn Rate (°/100ft)
3,574.60	0.60	211.31	3,574.51	13.97	3.22	10.57	1.34	0.08	131.53
3,599.83	0.08	305.83	3,599.74	13.87	3.14	10.52	2.42	-2.06	374.63
3,623.88	0.42	208.07	3,623.79	13.80	3.08	10.49	1.82	1.41	-406.49
3,648.74	0.35	213.02	3,648.65	13.66	3.00	10.41	0.31	-0.28	19.91
3,673.93	0.40	228.46	3,673.84	13.53	2.89	10.35	0.45	0.20	61.29
3,699.22	0.44	236.37	3,699.13	13.42	2.74	10.33	0.28	0.16	31.28
3,724.45	0.32	192.74	3,724.36	13.30	2.64	10.27	1.20	-0.48	-172.93
3,749.72	0.65	211.14	3,749.63	13.11	2.56	10.15	1.43	1.31	72.81
3,774.96	0.52	279.47	3,774.87	13.00	2.37	10.15	2.64	-0.52	270.72
3,799.42	0.34	173.63	3,799.33	12.95	2.27	10.15	2.84	-0.74	-432.71
3,824.74	0.29	247.06	3,824.65	12.85	2.22	10.09	1.50	-0.20	290.01
3,849.69	0.37	256.99	3,849.60	12.81	2.08	10.12	0.39	0.32	39.80
3,874.94	0.30	231.01	3,874.85	12.75	1.95	10.13	0.65	-0.28	-102.89
3,898.99	0.17	224.36	3,898.90	12.68	1.87	10.11	0.55	-0.54	-27.65
3,923.90	0.19	267.23	3,923.81	12.65	1.81	10.12	0.53	0.08	172.10
3,949.99	0.23	258.57	3,949.90	12.64	1.71	10.16	0.20	0.15	-33.19
3,974.81	0.17	242.22	3,974.72	12.61	1.63	10.17	0.33	-0.24	-65.87
3,999.81	0.18	257.12	3,999.72	12.59	1.56	10.19	0.19	0.04	59.60
4,024.32	0.15	283.17	4,024.23	12.59	1.49	10.22	0.33	-0.12	106.28
4,049.17	0.12	281.94	4,049.08	12.60	1.43	10.26	0.12	-0.12	-4.95
4,073.99	0.18	217.24	4,073.90	12.57	1.39	10.26	0.68	0.24	-260.68
4,100.00	0.30	312.37	4,099.91	12.59	1.31	10.31	1.40	0.46	365.74
4,124.61	0.24	285.54	4,124.52	12.65	1.21	10.41	0.56	-0.24	-109.02
4,149.42	0.10	314.33	4,149.33	12.67	1.15	10.46	0.64	-0.56	116.04
4,174.03	0.23	319.14	4,173.94	12.73	1.10	10.53	0.53	0.53	19.54
4,198.88	0.33	287.50	4,198.79	12.79	1.00	10.63	0.73	0.40	-127.32
4,223.97	0.16	296.89	4,223.88	12.82	0.90	10.72	0.69	-0.68	37.43
4,249.97	0.28	291.86	4,249.88	12.86	0.81	10.80	0.47	0.46	-19.35
4,274.94	0.70	310.91	4,274.84	12.99	0.64	10.99	1.78	1.68	76.29
4,299.85	0.56	292.18	4,299.75	13.13	0.41	11.23	0.99	-0.56	-75.19
4,324.78	0.47	298.44	4,324.68	13.23	0.21	11.41	0.43	-0.36	25.11
4,349.62	0.50	290.69	4,349.52	13.31	0.01	11.58	0.29	0.12	-31.20
4,374.09	0.56	307.15	4,373.99	13.42	-0.18	11.77	0.67	0.25	67.27
4,398.98	0.58	306.93	4,398.88	13.57	-0.38	12.00	0.08	0.08	-0.88
4,423.96	0.67	295.52	4,423.86	13.71	-0.61	12.23	0.61	0.36	-45.68
4,448.87	0.93	294.21	4,448.77	13.86	-0.93	12.51	1.05	1.04	-5.26
4,474.94	0.96	293.24	4,474.83	14.03	-1.32	12.86	0.13	0.12	-3.72
4,499.84	0.94	285.16	4,499.73	14.17	-1.71	13.17	0.54	-0.08	-32.45
4,524.78	1.07	285.13	4,524.66	14.28	-2.13	13.48	0.52	0.52	-0.12
4,549.66	1.00	284.91	4,549.54	14.40	-2.57	13.79	0.28	-0.28	-0.88
4,574.22	1.03	284.35	4,574.10	14.51	-2.99	14.09	0.13	0.12	-2.28
4,599.22	1.11	285.18	4,599.09	14.63	-3.44	14.42	0.33	0.32	3.32
4,624.15	1.11	287.66	4,624.02	14.76	-3.90	14.77	0.19	0.00	9.95

Scientific Drilling International

Survey Report

Company:	KP Kauffman Co, Inc.	Local Co-ordinate Reference:	Well Yoxall Farms #10
Project:	Weld County, CO	TVD Reference:	GL 4980' @ 4980.00ft (Ground Level)
Site:	Yoxall Farms	MD Reference:	GL 4980' @ 4980.00ft (Ground Level)
Well:	Yoxall Farms #10	North Reference:	True
Wellbore:	OH	Survey Calculation Method:	Minimum Curvature
Design:	OH	Database:	Casper District

Survey										
Measured Depth (ft)	Inclination (°)	Azimuth (°)	Vertical Depth (ft)	+N/-S (ft)	+E/-W (ft)	Vertical Section (ft)	Dogleg Rate (°/100ft)	Build Rate (°/100ft)	Turn Rate (°/100ft)	
4,649.10	1.00	289.28	4,648.96	14.91	-4.34	15.11	0.46	-0.44	6.49	
4,674.05	1.07	298.33	4,673.91	15.09	-4.75	15.47	0.71	0.28	36.27	
4,699.16	1.14	292.76	4,699.01	15.30	-5.18	15.87	0.51	0.28	-22.18	
4,724.98	1.17	286.82	4,724.83	15.47	-5.67	16.26	0.48	0.12	-23.01	
4,748.96	1.21	277.85	4,748.80	15.58	-6.16	16.59	0.79	0.17	-37.41	
4,774.74	1.09	260.08	4,774.58	15.57	-6.67	16.84	1.45	-0.47	-68.93	
4,799.34	1.18	281.82	4,799.17	15.58	-7.15	17.08	1.78	0.37	88.37	
4,824.02	1.20	299.75	4,823.85	15.77	-7.62	17.47	1.50	0.08	72.65	
4,849.91	1.09	285.67	4,849.73	15.97	-8.09	17.88	1.16	-0.42	-54.38	
4,874.32	1.14	279.47	4,874.14	16.07	-8.56	18.20	0.53	0.20	-25.40	
4,899.31	0.93	288.97	4,899.13	16.18	-8.99	18.51	1.08	-0.84	38.02	
4,911.30	1.05	290.87	4,911.11	16.25	-9.19	18.66	1.04	1.00	15.85	
Last SDI Gyro Survey										

Design Annotations					
Measured Depth (ft)	Vertical Depth (ft)	Local Coordinates			
		+N/-S (ft)	+E/-W (ft)	Comment	
99.90	99.90	0.20	-0.01	First SDI Gyro Survey	
4,911.30	4,911.11	16.25	-9.19	Last SDI Gyro Survey	

Checked By: _____ Approved By: _____ Date: _____