



RADIAL CEMENT BOND LOG
GAMMA RAY
CCL

Company KERR MCGEE OIL AND GAS ONSHORE
Well MARTIN T HART "E" GAS UNIT #1
Field WATTENBERG
County WELD
State COLORADO

Company KERR MCGEE OIL AND GAS ONSHORE
Well MARTIN T HART "E" GAS UNIT #1
Field WATTENBERG
County WELD State COLORADO

Location: API # : 05-123-08464
SHL:1090' FSL & 990' FWL SW/SW
LAT:40.10510 & LONG:-104.88260
SEC 27 TWP 2N RGE 67W
Permanent Datum G.L. Elevation 5009
Log Measured From KB 10
Drilling Measured From K.B
Other Services
KB. 5019
D.F. 5018
G.L. 5009

Date 03-18-2014

Run Number ONE
Depth Driller 8116
Depth Logger 1104
Bottom Logged Interval 1102
Top Log Interval 300
Open Hole Size 8.875
Type Fluid WATER
Density / Viscosity 1.0
Max. Recorded Temp. 290
Estimated Cement Top
Time Well Ready
Time Logger on Bottom
Equipment Number 4740
Location GREELEY, CO
Recorded By J.J.BULLARD
Witnessed By R.SMITH

Borehole Record				Tubing Record			
Run Number	Bit	From	To	Size	Weight	From	To
ONE	12.25	0	221				
TWO	8.875	221	8073				

Casing Record	Size	Wgt/Ft	Top	Bottom
Surface String	8.63	24	0	730
Prot. String				
Production String	5.5	15.5# & 17&	0	T.D.
Liner				

<<< Fold Here >>>

All interpretations are opinions based on inferences from electrical or other measurements and we cannot and do not guarantee the accuracy or correctness of any interpretation, and we shall not, except in the case of gross or willful negligence on our part, be liable or responsible for any loss, costs, damages, or expenses incurred or sustained by anyone resulting from any interpretation made by any of our officers, agents or employees. These interpretations are also subject to our general terms and conditions set out in our current Price Schedule.

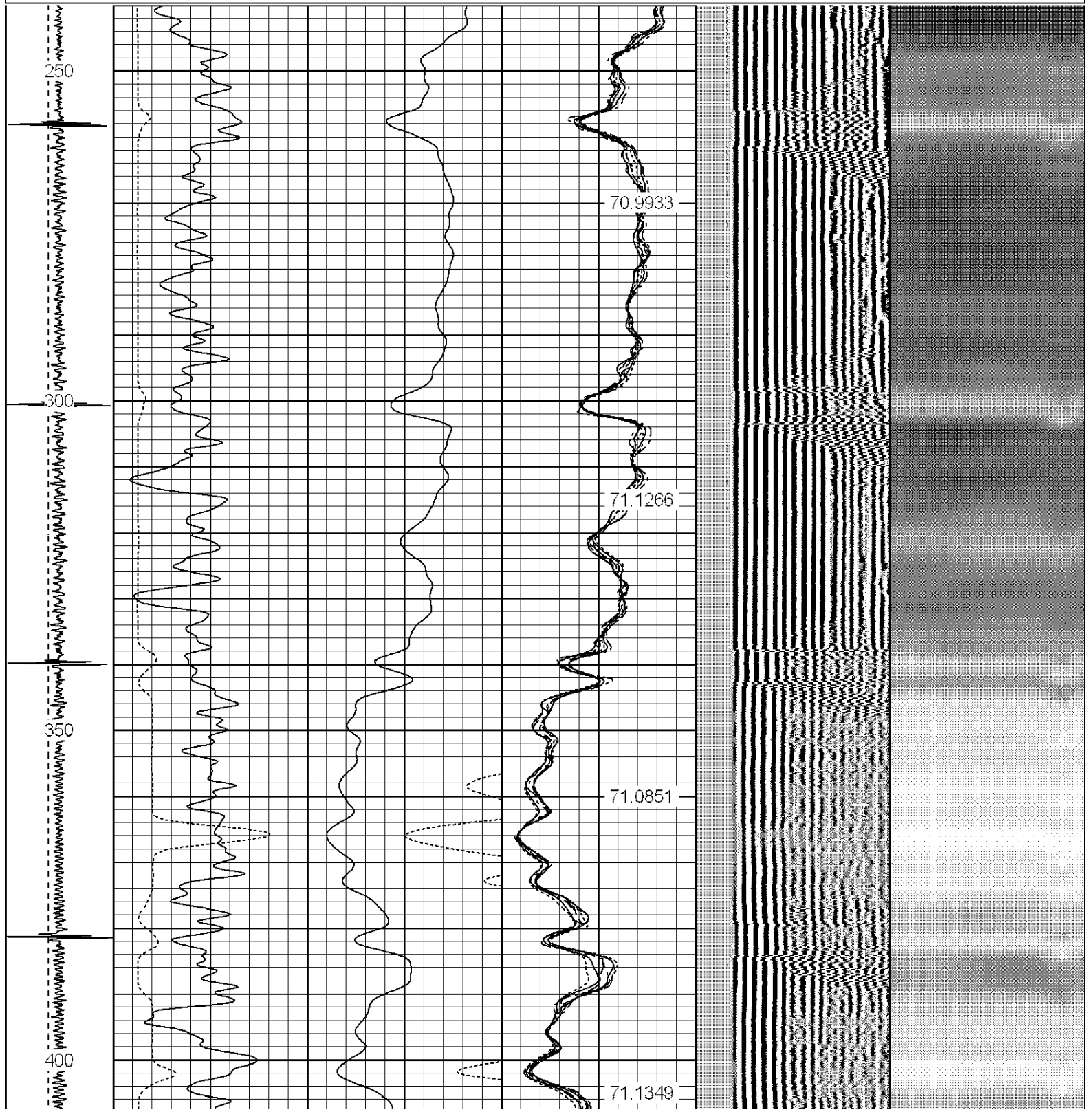
Comments

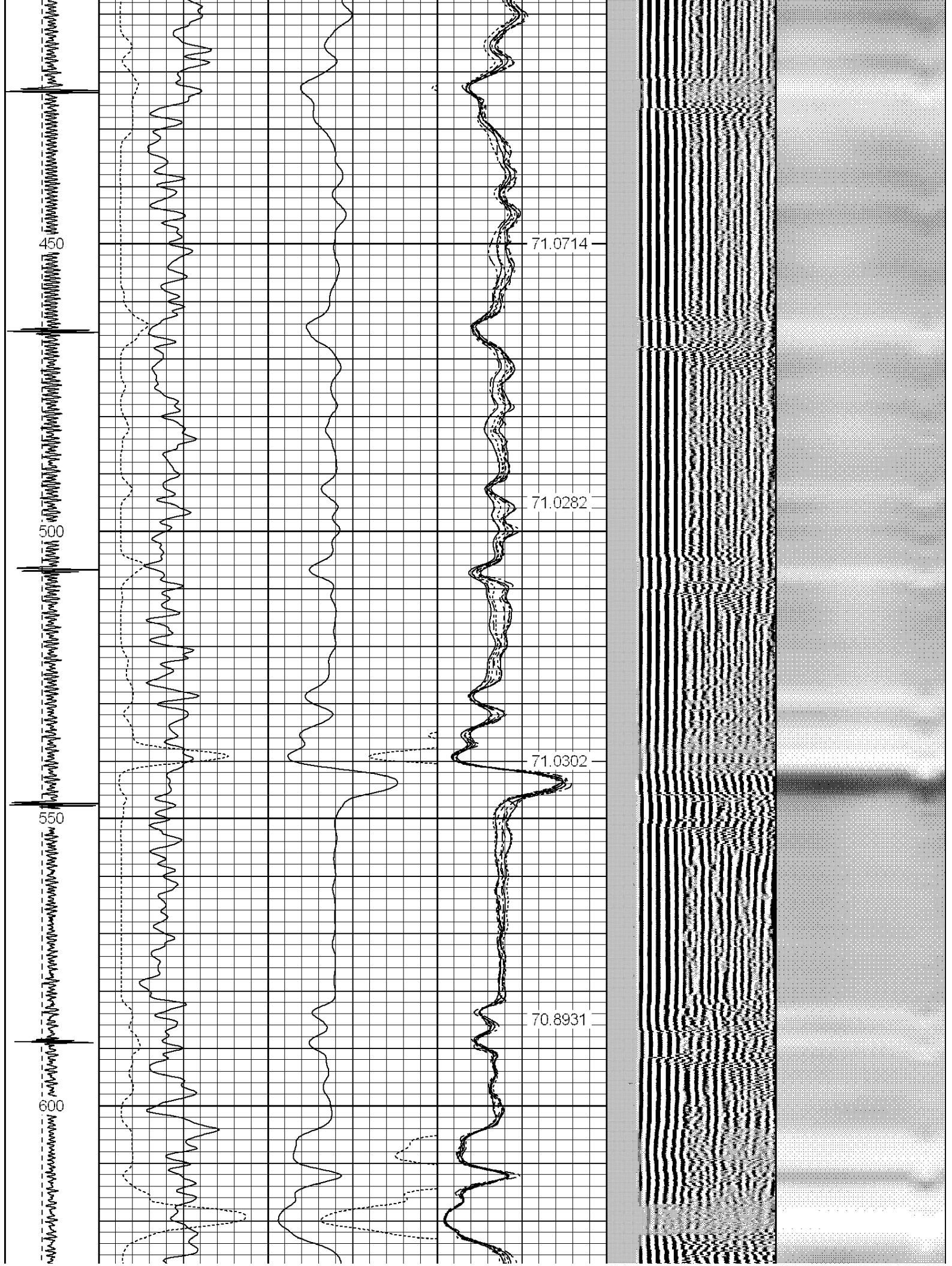
LOGGED TO VERIFY CEMENT BOND
THANK YOU FOR USING WARRIOR ENERGY SERVICES!!!

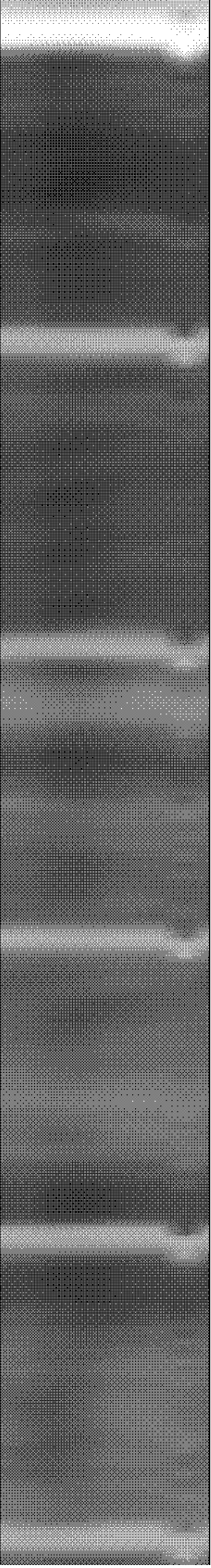
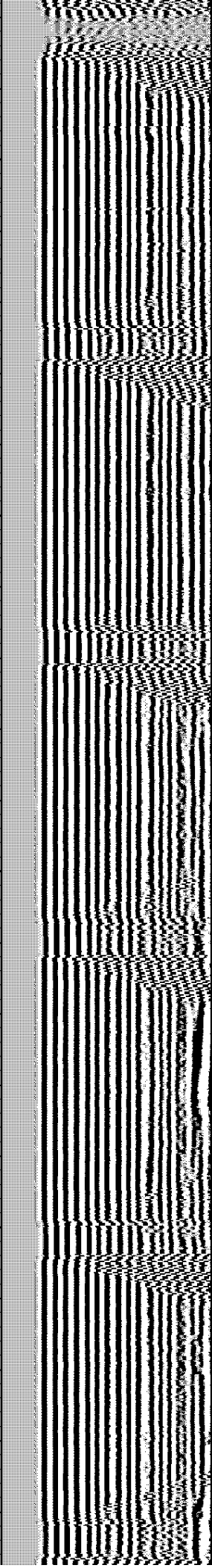
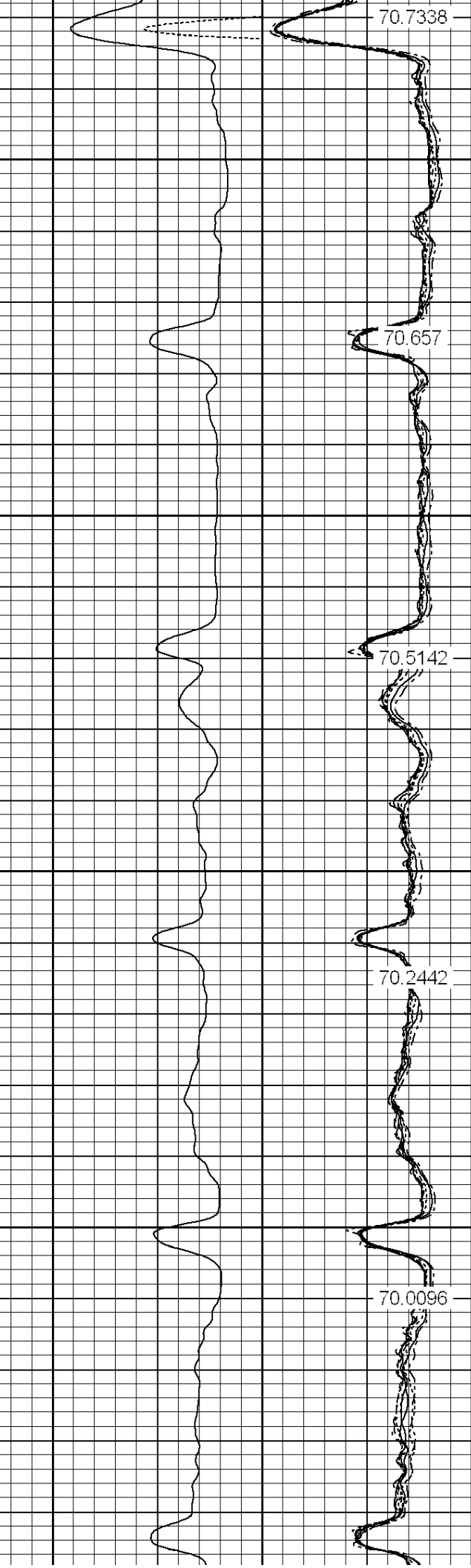
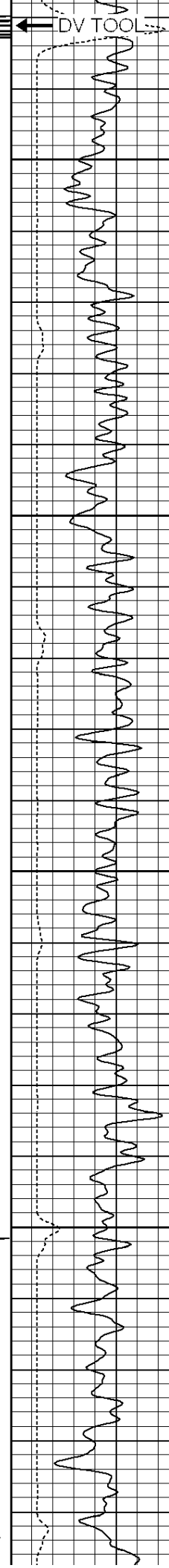
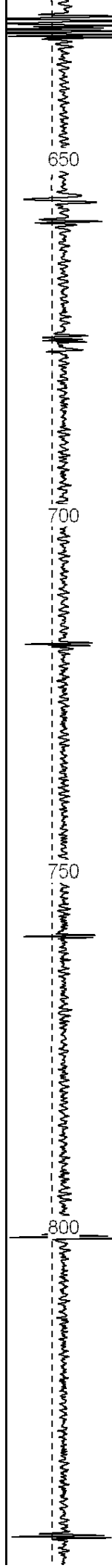
Sensor	Offset (ft)	Schematic	Description	Len (ft)	OD (in)	Wt (lb)

[illegible]

-9	CCL	9	200	TT (usec)	800	0	AMP (mV)	100	0	AMPS1	100	200	VDL	1200	1	Cement Map	8
LSPD			0	GR (GAPI)	200	0	AMPx5 (mV)	20	0	AMPS2	100				1		100
(ft/min)			200	GR (GAPI)	400				0	AMPS4	100						
0		250							0	AMPS5	100						
									0	AMPS6	100						
									0	AMPS7	100						
									0	AMPS8	100						
										IntTemp							
										(degF)							







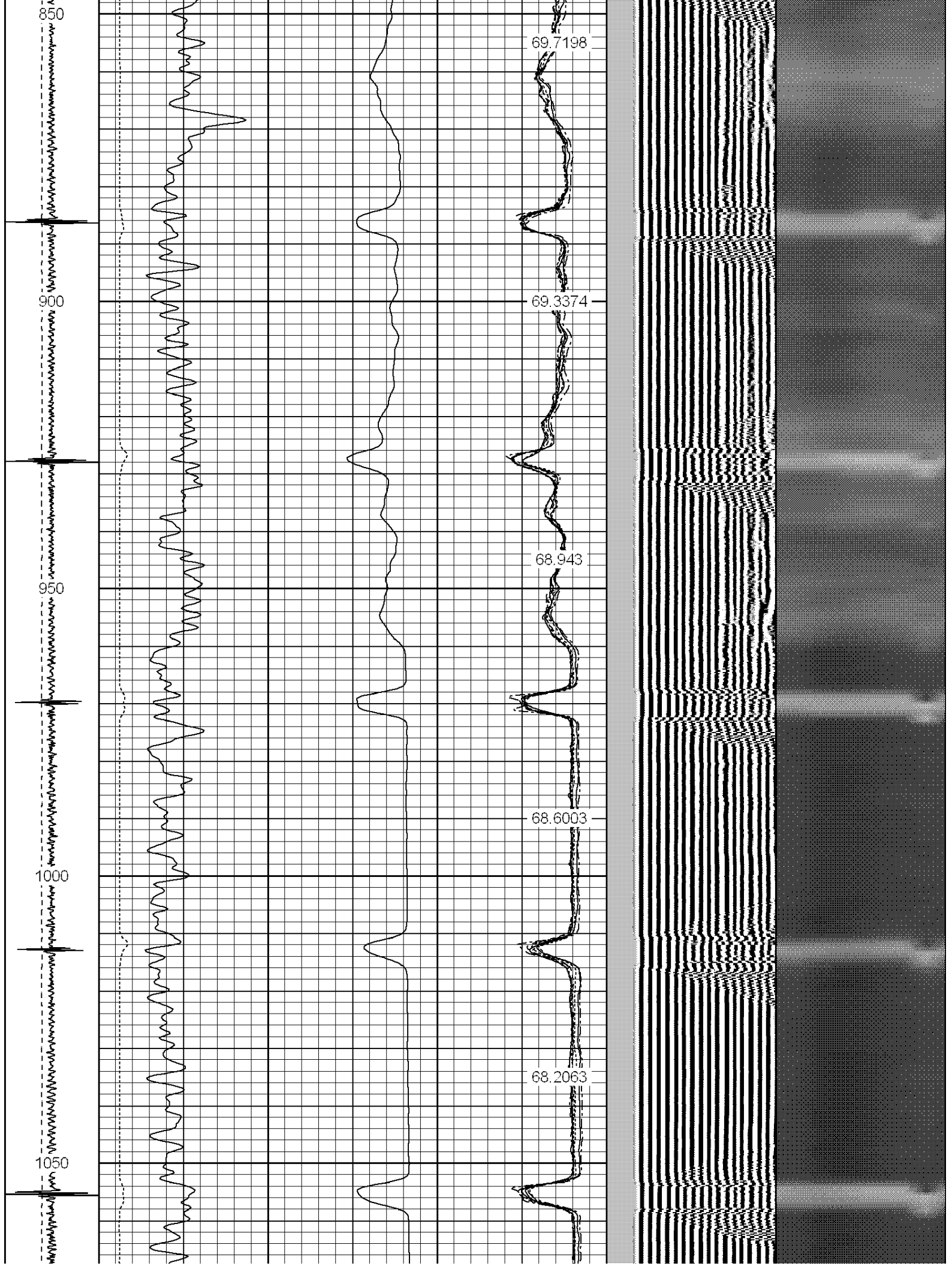
70.7338

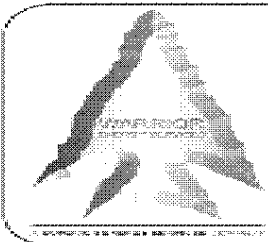
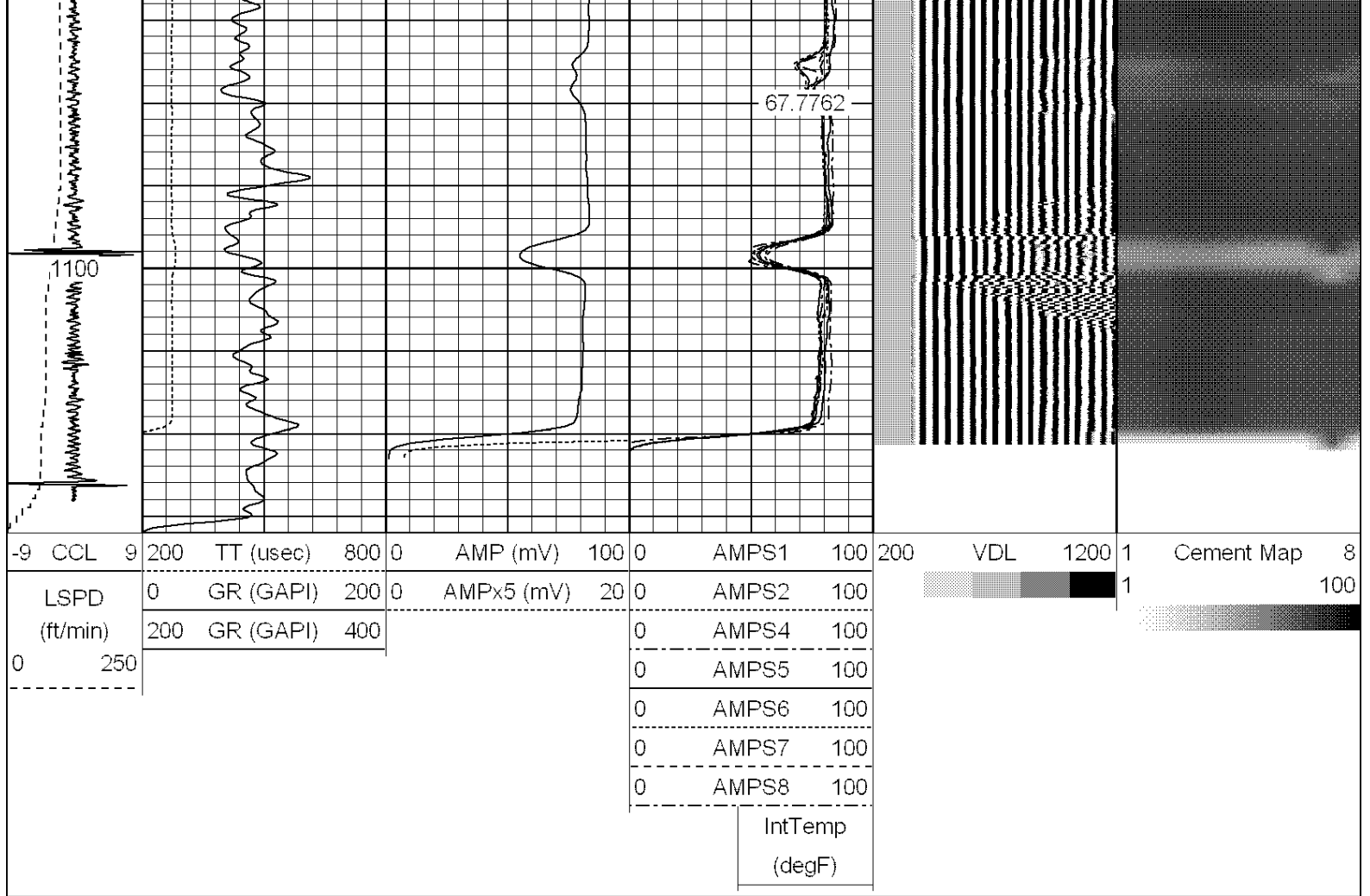
70.657

70.5142

70.2442

70.0096





WARRIOR
ENERGY SERVICES

Company KERR MCGEE OIL AND GAS ONSHORE
Well MARTIN T HART "E" GAS UNIT #1
Field WATTENBERG
County WELD
State COLORADO