



CEMENT BOND LOG

GAMMA RAY

CCL

Company KERR-McGEE OIL & GAS ONSHORE LP
Well MARTIN T HART "E" GAS UNIT # 1
Field WATTENBERG
County WELD
State COLORADO

Company KERR-McGEE OIL & GAS ONSHORE LP
Well MARTIN T HART "E" GAS UNIT # 1
Field WATTENBERG
County WELD State COLORADO

Location: SHL: 1090' FSL & 990' FWL SW/SW
LAT: 40.10510 & LONG: -104.88260
API # : 05-123-08464
Other Services
Permanent Datum GL
Log Measured From KB 10'
Drilling Measured From KB
Elevation 5009'
K.B. 5019'
D.F. 5018'
G.L. 5009'

Date 3-12-14

Run Number ONE
Depth Driller 8116'
Depth Logger 4060'
Bottom Logged Interval 4056'
Top Log Interval Surface
Open Hole Size 9 5/8
Type Fluid WATER
Density / Viscosity 1.0
Max. Recorded Temp. 138
Estimated Cement Top 3840' & 320'
Time Well Ready N/A
Time Logger on Bottom N/A
Equipment Number 5432
Location GREELEY, CO
Recorded By M. JANDREAU
Witnessed By RON SMITH

Borehole Record
Run Number Bit From To Size Weight From To
ONE
TWO

Casing Record
Surface String Size 8 5/8 Wgt/Ft 24# Top 0 Bottom 221'
Prot. String
Production String 5 1/2 15.5# & 17# 0 8073'
Liner

<<< Fold Here >>>



All interpretations are opinions based on inferences from electrical or other measurements and we cannot and do not guarantee the accuracy or correctness of any interpretation, and we shall not, except in the case of gross or willful negligence on our part, be liable or responsible for any loss, costs, damages, or expenses incurred or sustained by anyone resulting from any interpretation made by any of our officers, agents or employees. These interpretations are also subject to our general terms and conditions set out in our current Price Schedule.

Comments

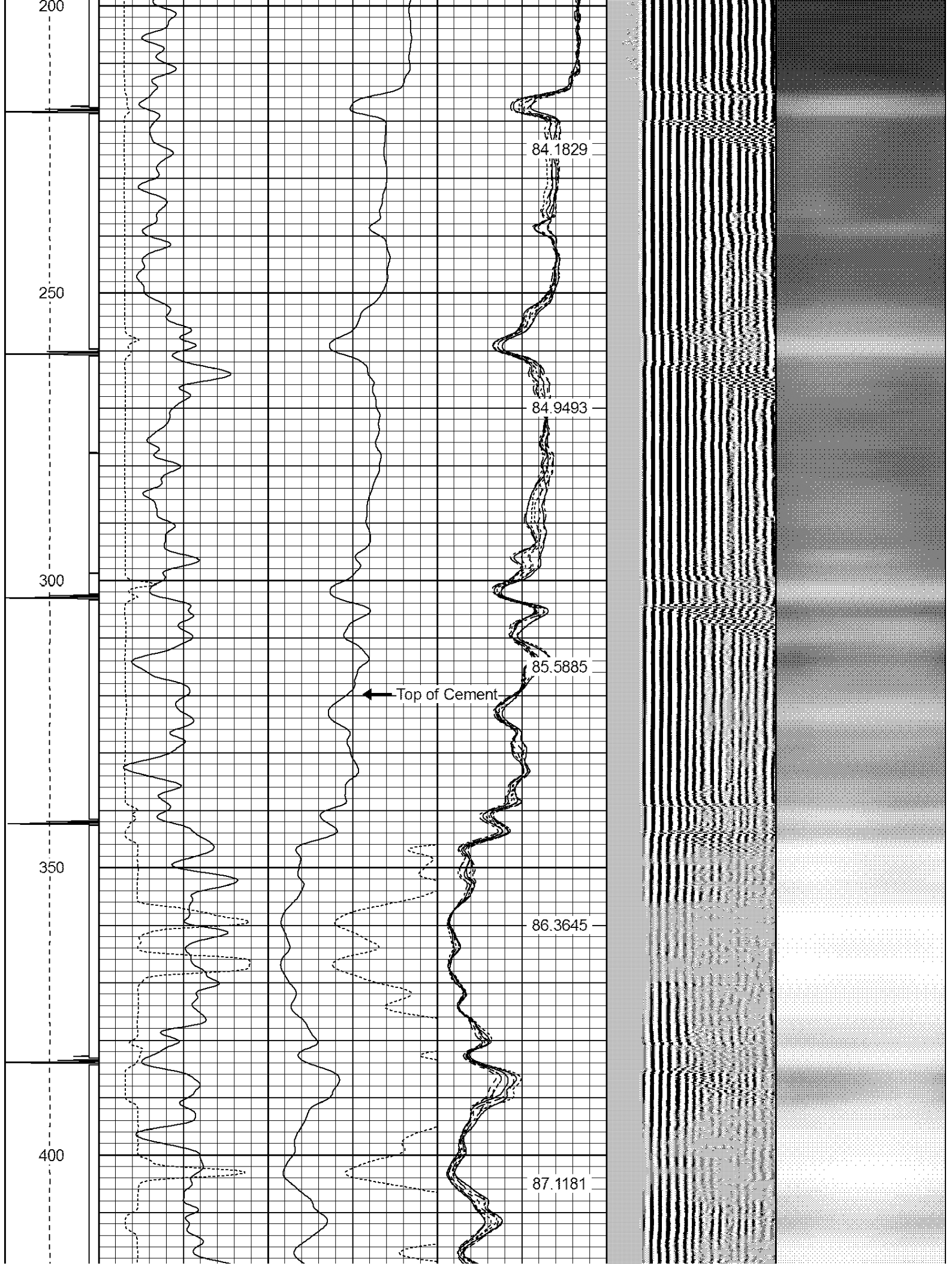
CORRELATED DOWN HOLE 21' TO Schlumberger Log 8-22-1995
RAN LOG TO VERIFY CEMENT
THANK YOU FOR USING WARRIOR ENERGY SERVICES!!!!

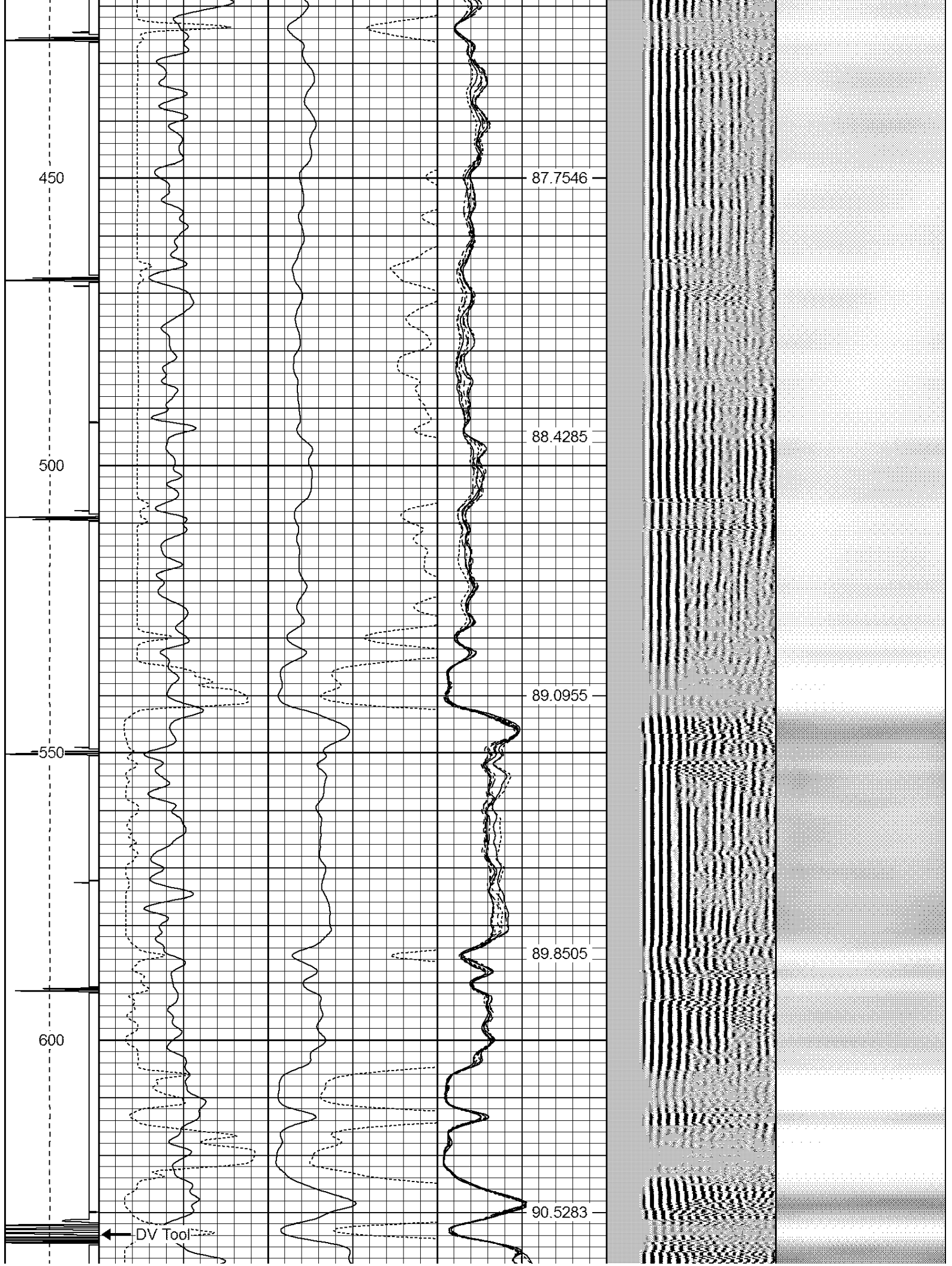
Sensor	Offset (ft)	Schematic	Description	Len (ft)	OD (in)	Wt (lb)

				PTS275	2.83	2.75	
HEADVOLT	16.25						
IntTemp	14.83						
WVF3FT	11.58			RBT-Probe (Base)	8.92	2.75	90.00
WVFCAL	11.58			Probe Radii Bond Tool with Digital Telemetry			
WVFS1	11.58						
WVFS2	11.58						
WVFS3	11.58						
WVFS4	11.58						
WVFS5	11.58						
WVFS6	11.58						
WVFS7	11.58						
WVFS8	11.58						
WVF5FT	10.58						
CNLSC	6.00			CNT-Probe_B (275)	3.00	2.75	40.00
CNSSC	5.17			6 bow centralizer			
CCL	3.64						
				GR-Probe (275)	4.33	2.75	30.00
				Probe 2.75"			
GR	0.90						
<div>Dataset: martin t hart e gas unit #1.db: field/well/run1/pass2</div> <div>Total Length: 19.08 ft</div> <div>Total Weight: 160.00 lb</div> <div>O.D. 2.75 in</div>							

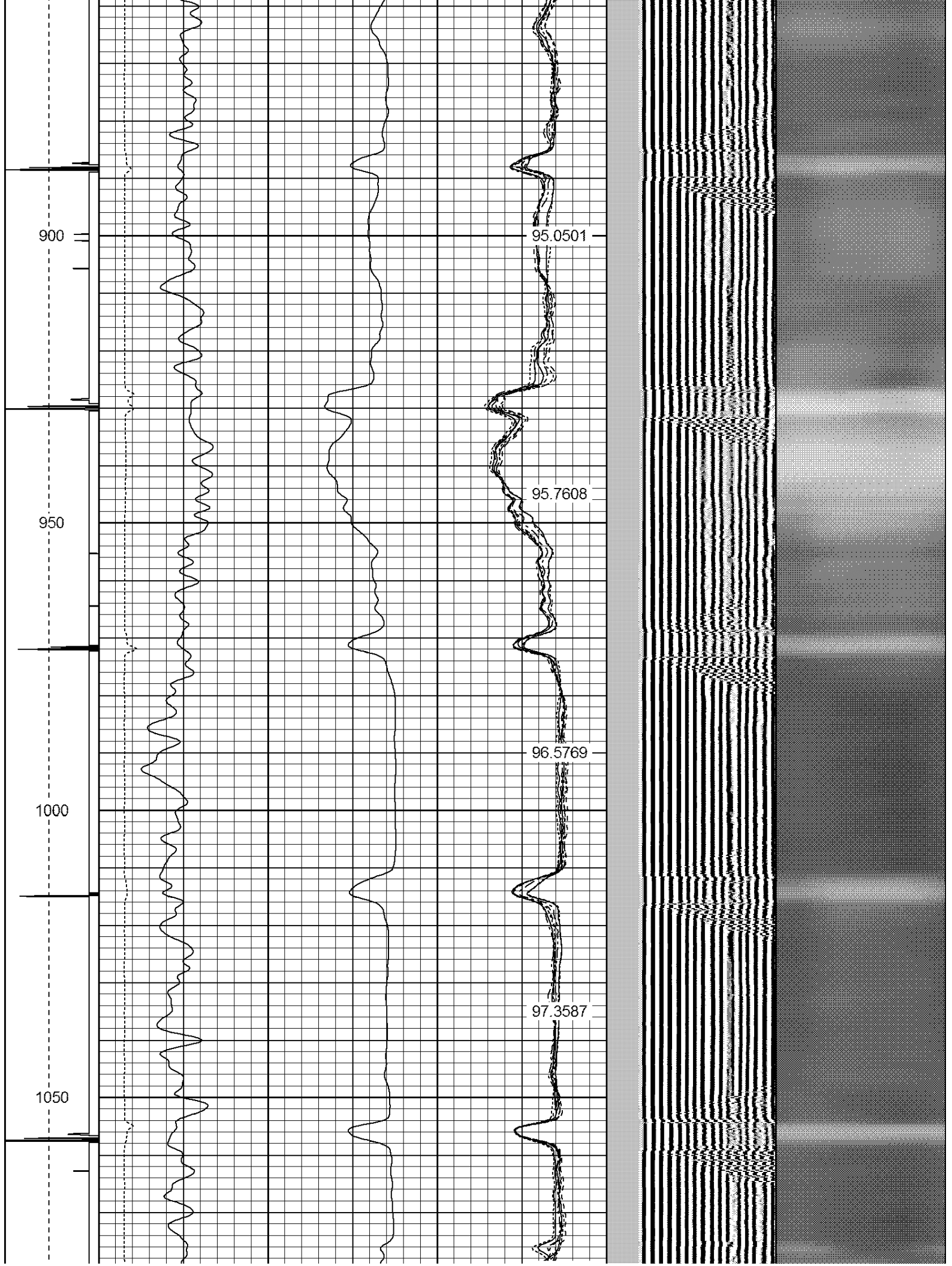
-9	CCL	1	200	TT (usec)	800	0	AMP (mV)	100	0	AMPS1	100	200	VDL	1200	1	Cement Map	8
LSPD (ft/min)			0	GR (GAPI)	200	0	AMPx5 (mV)	20	0	AMPS2	100				1	100	
			200	GR (GAPI)	400				0	AMPS4	100						
0	250							0	AMPS5	100							
									0	AMPS6	100						
									0	AMPS7	100						
									0	AMPS8	100						
											IntTemp (degF)						

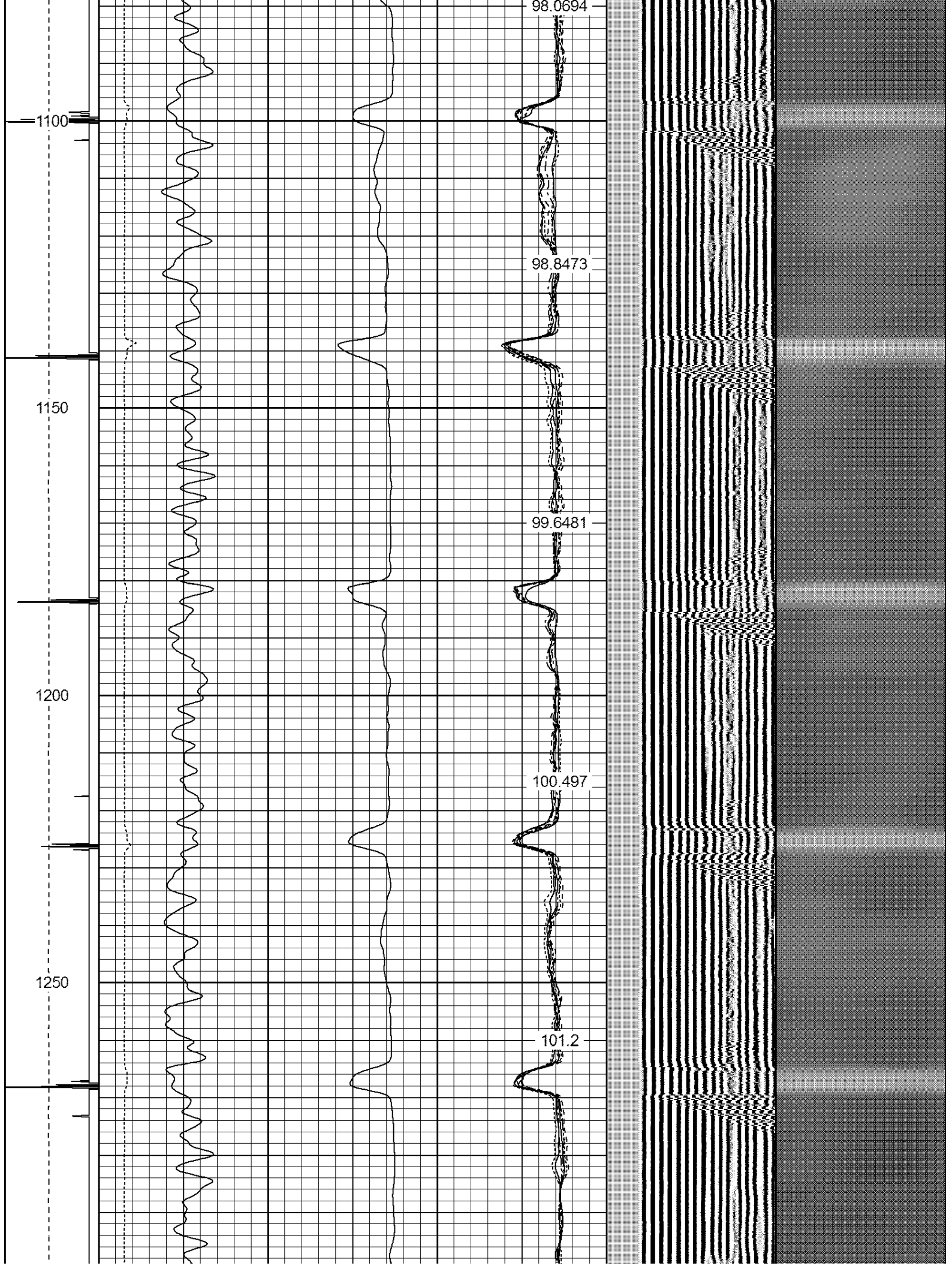


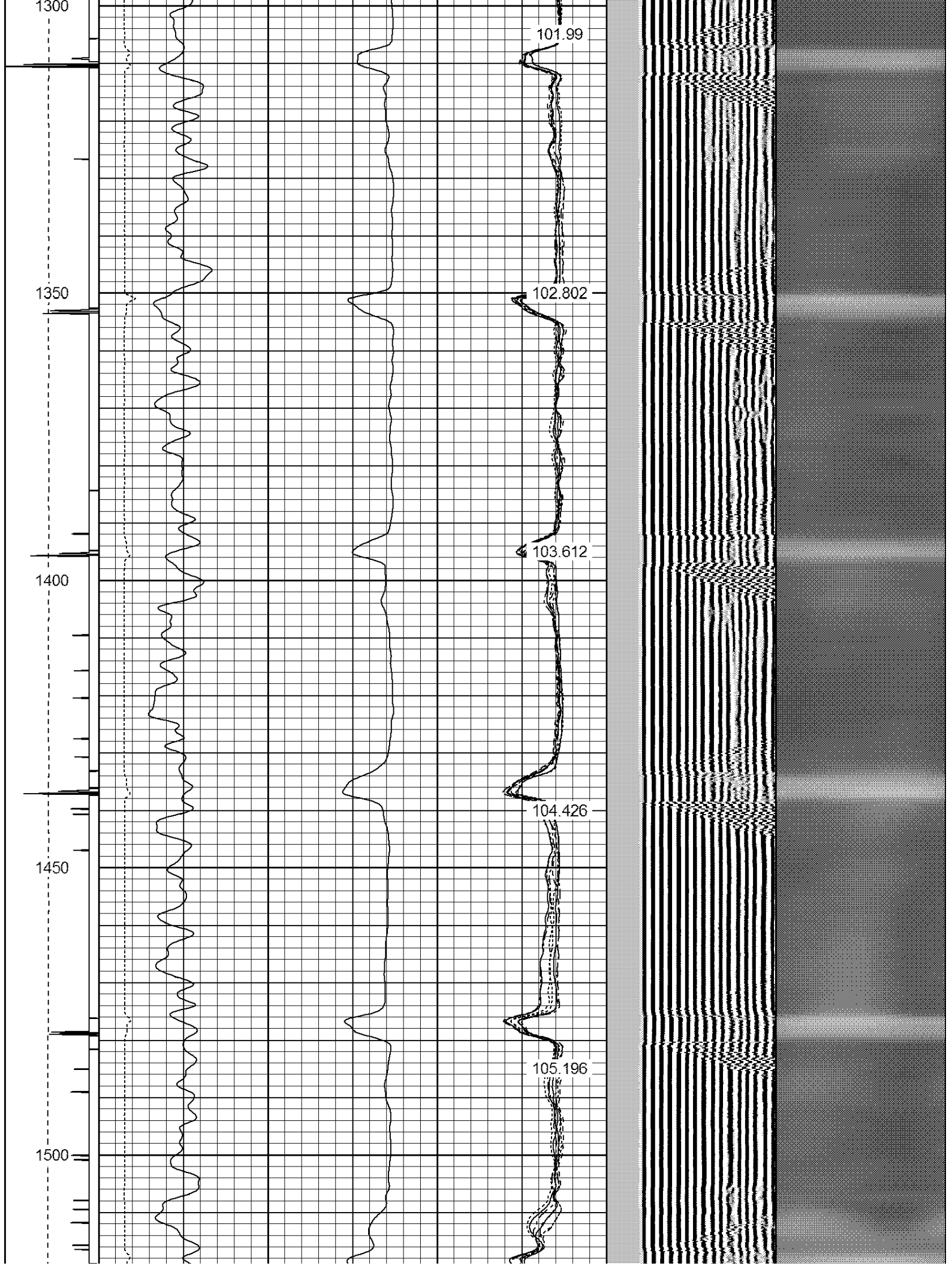


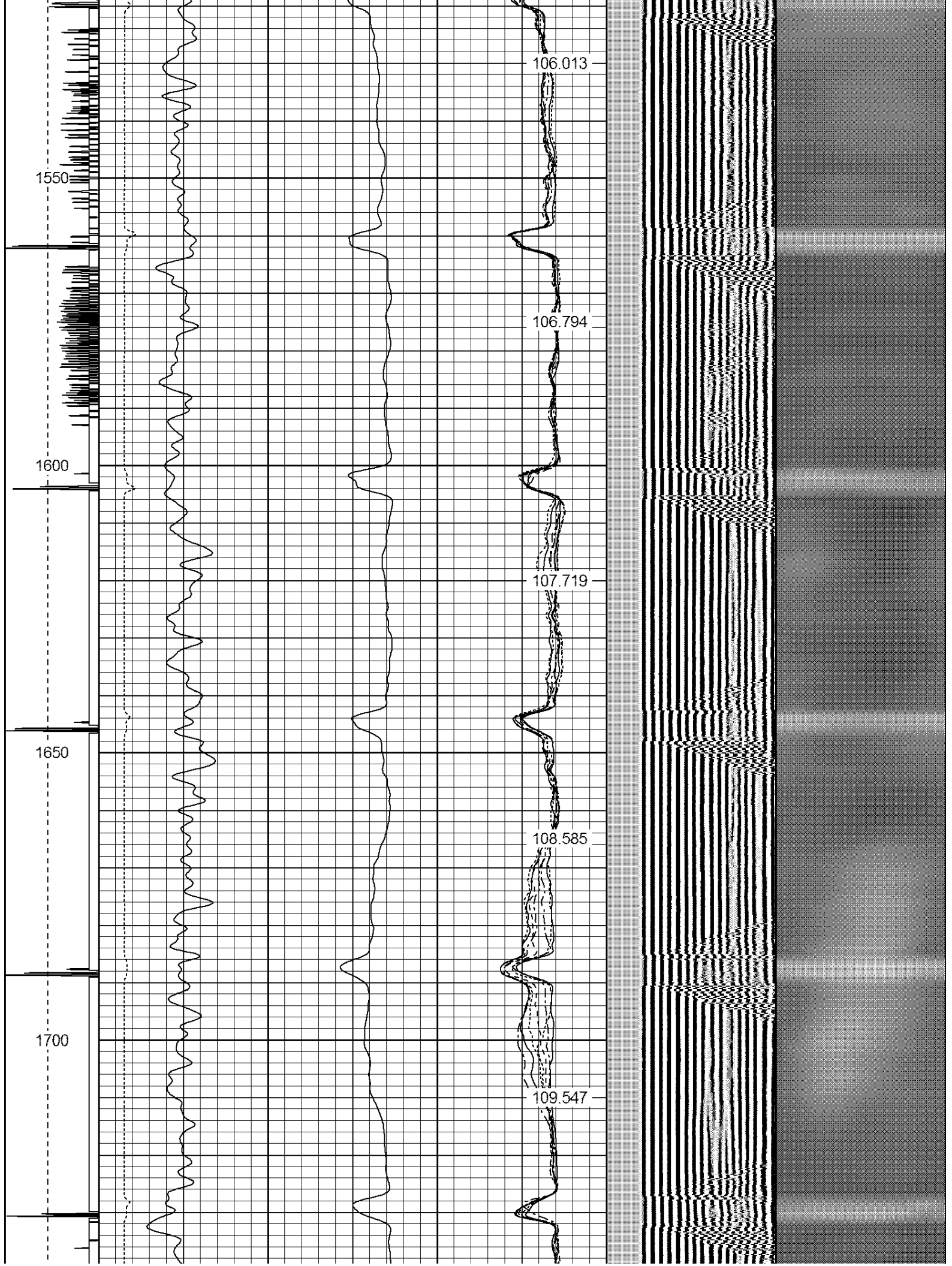


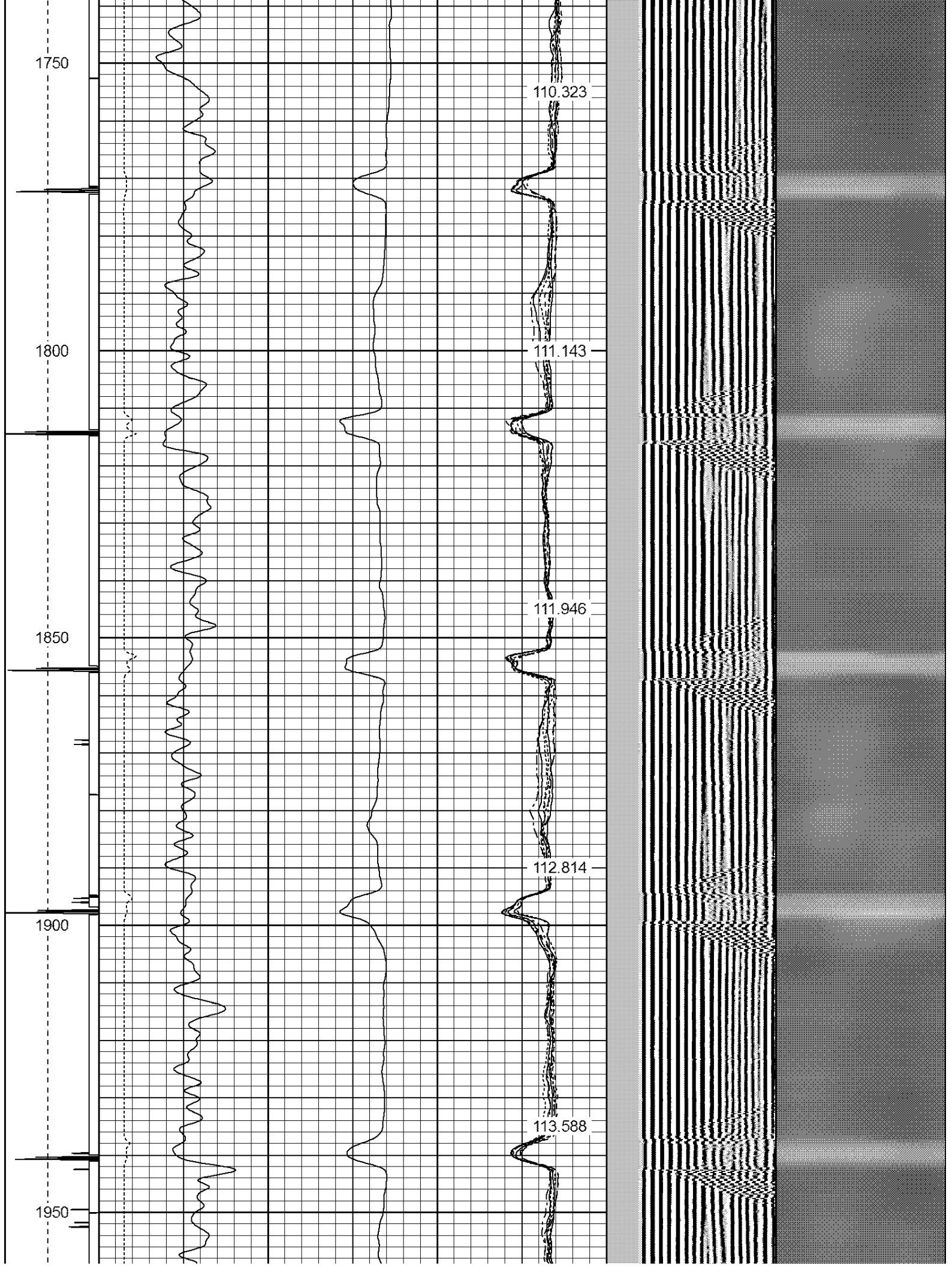


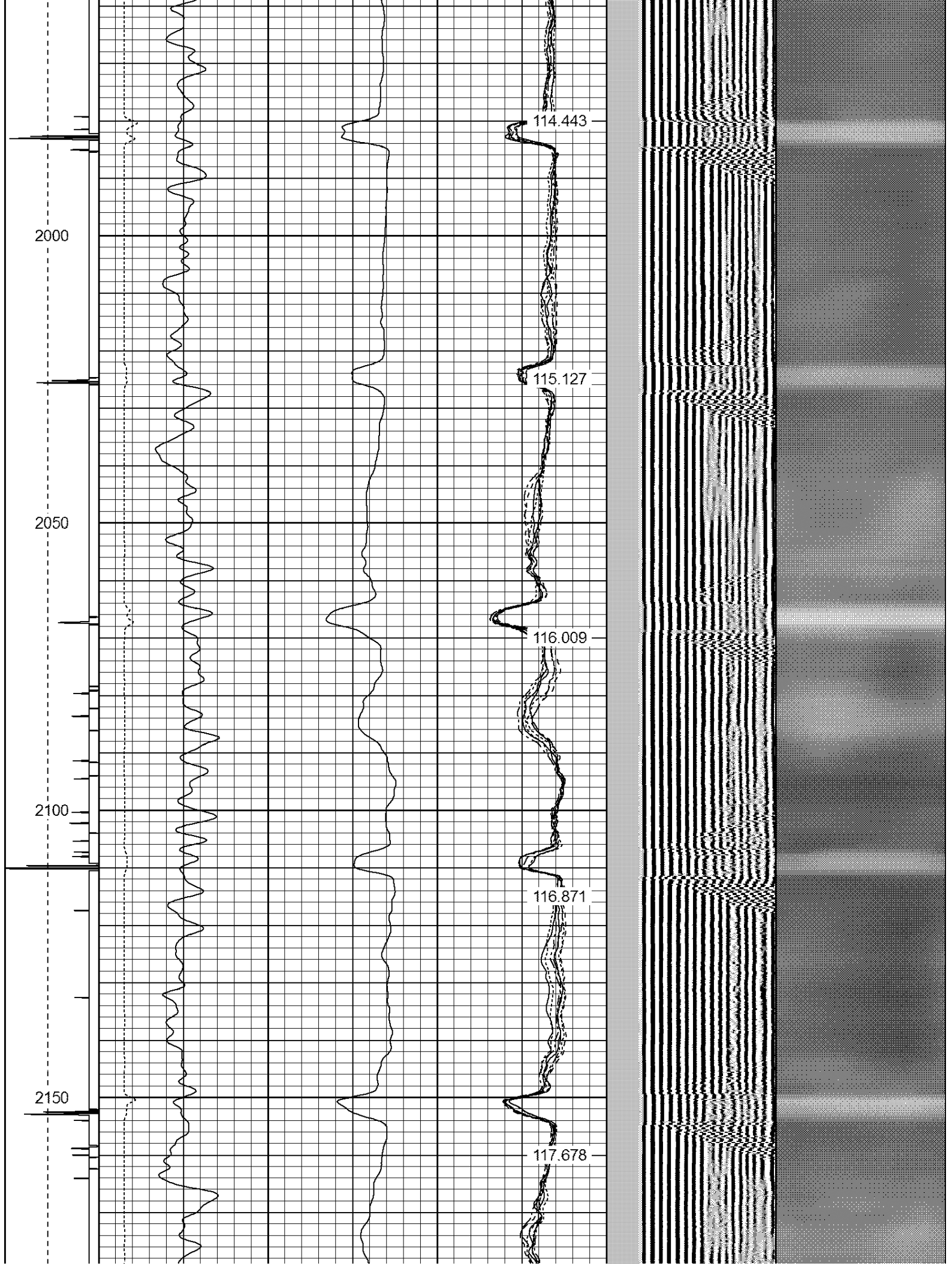


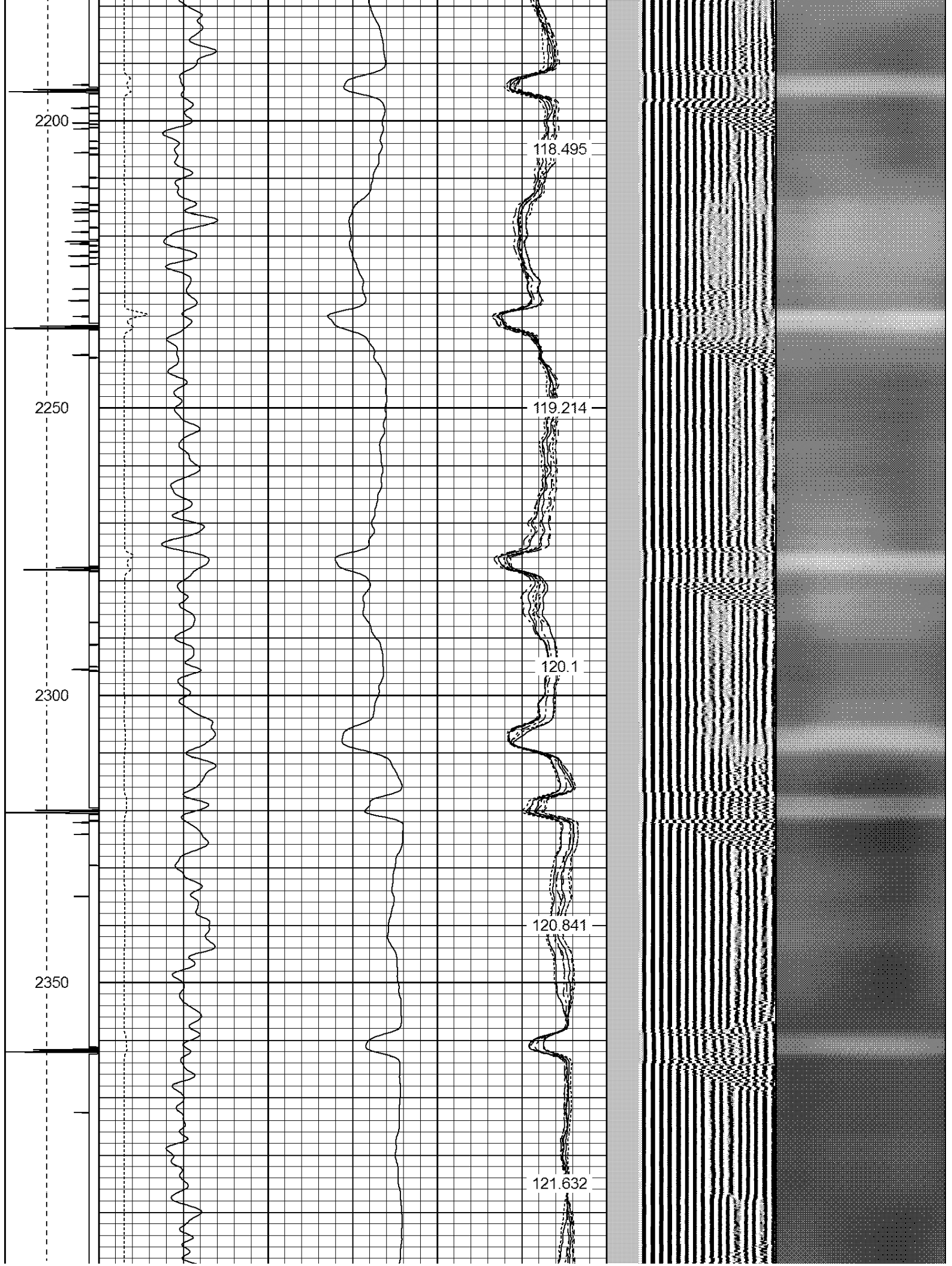


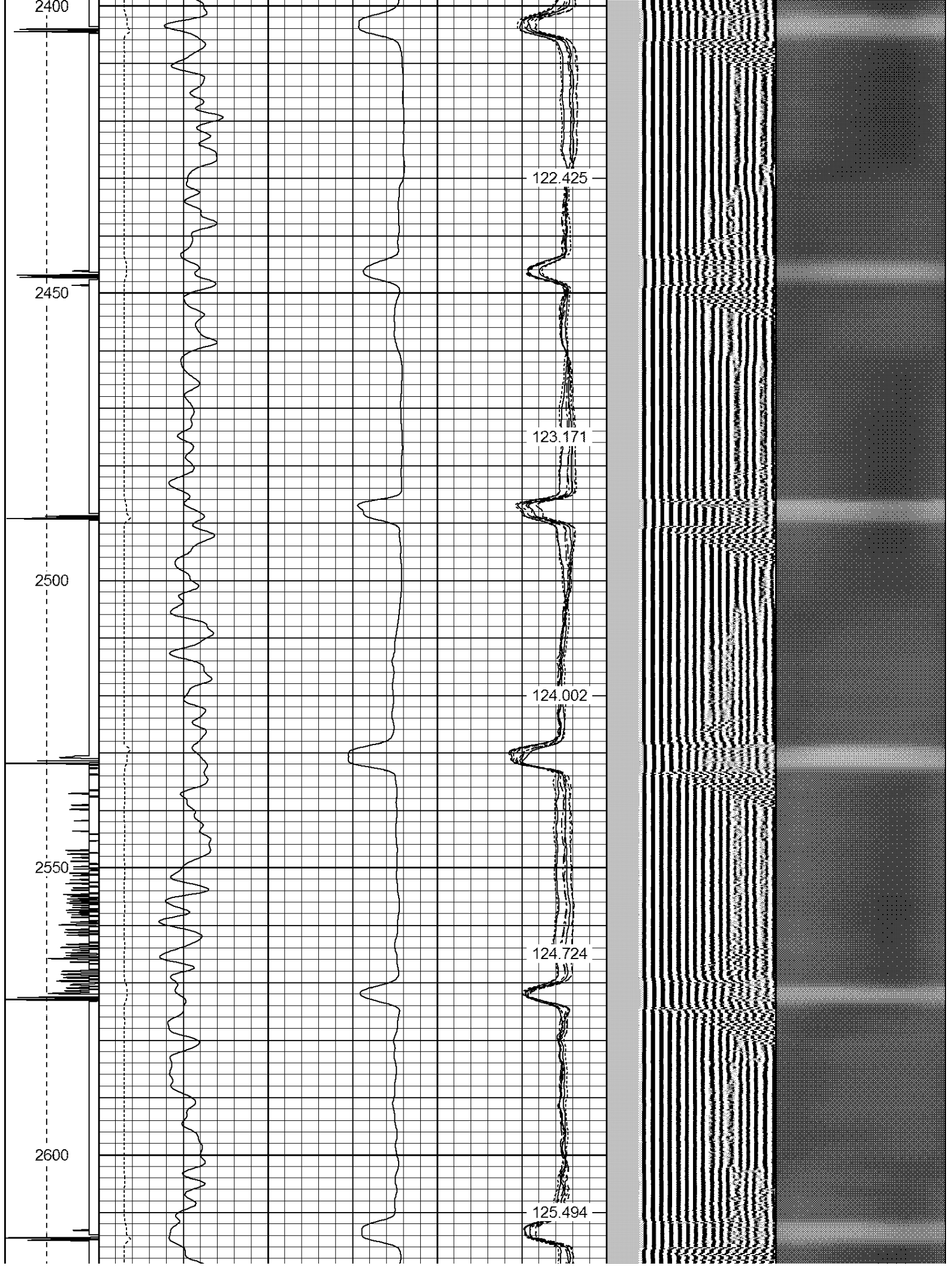


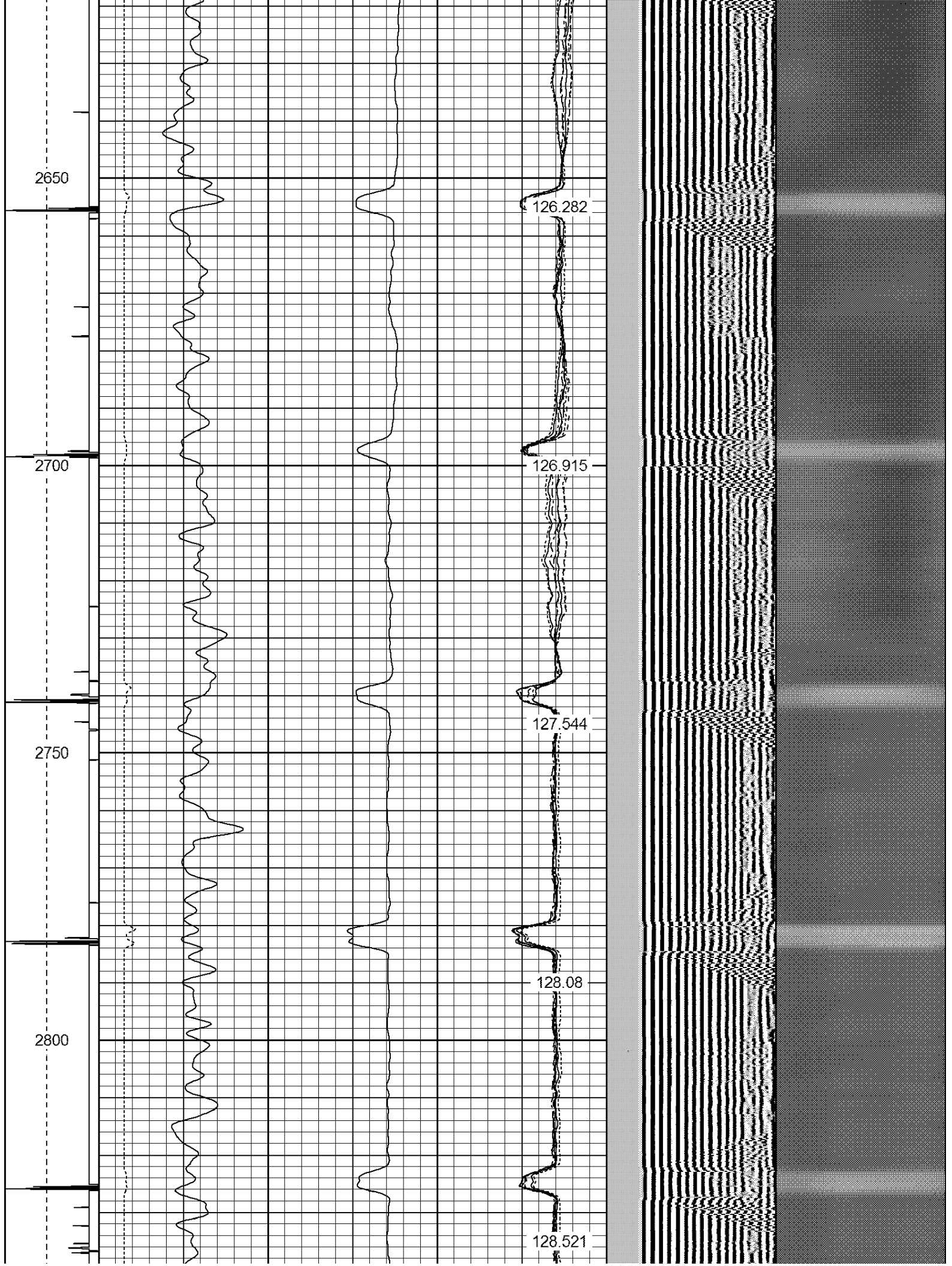


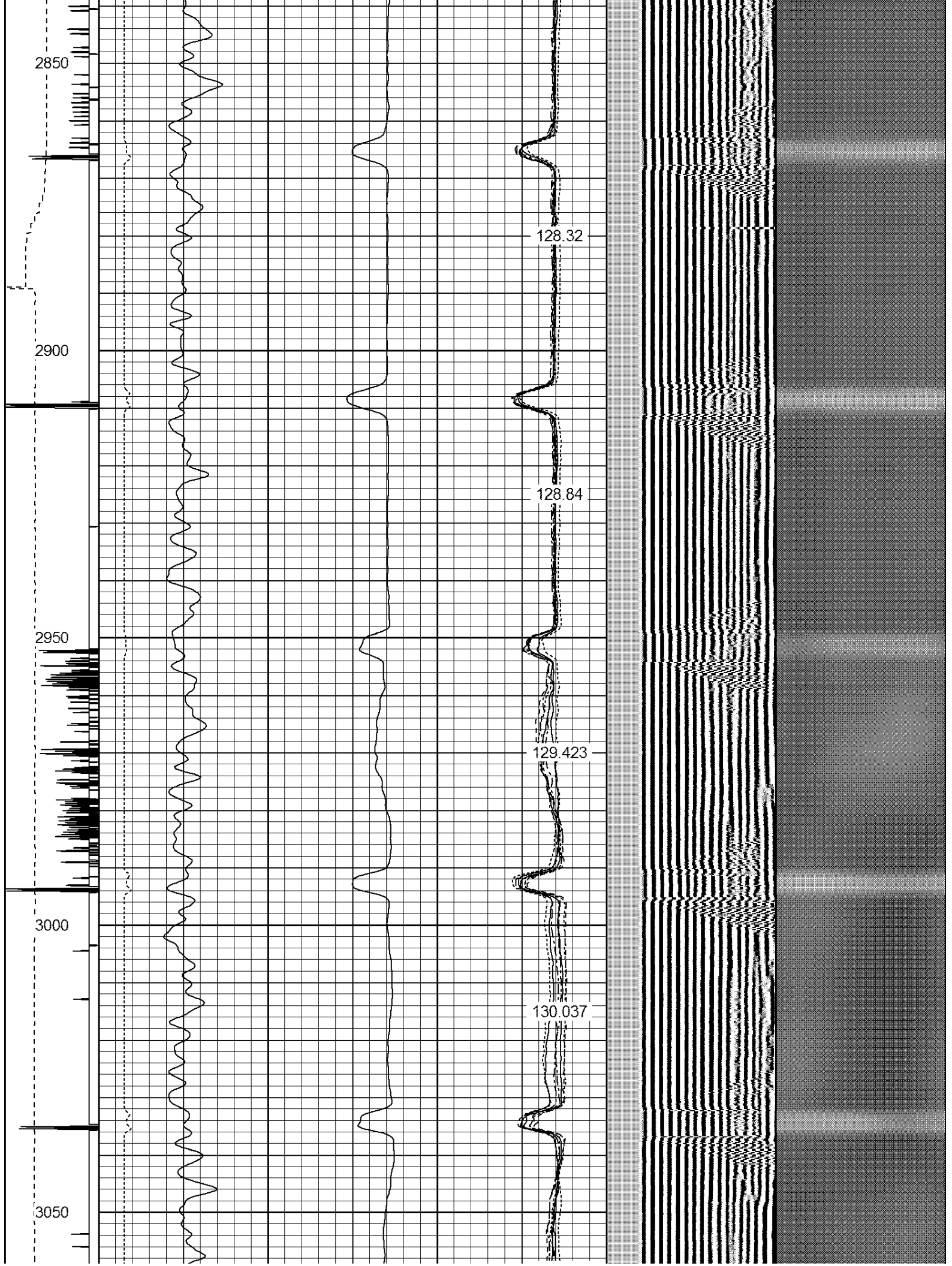


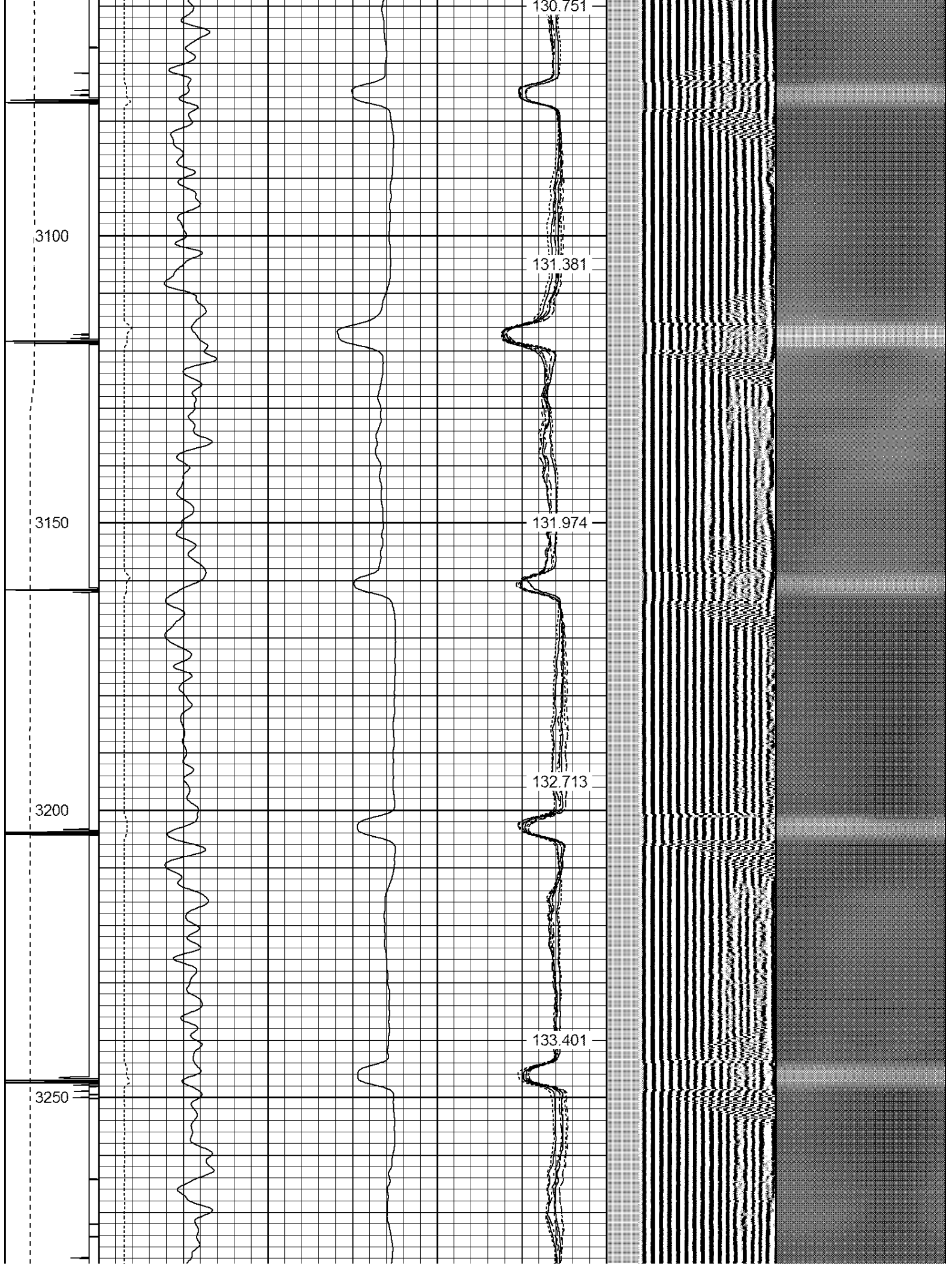




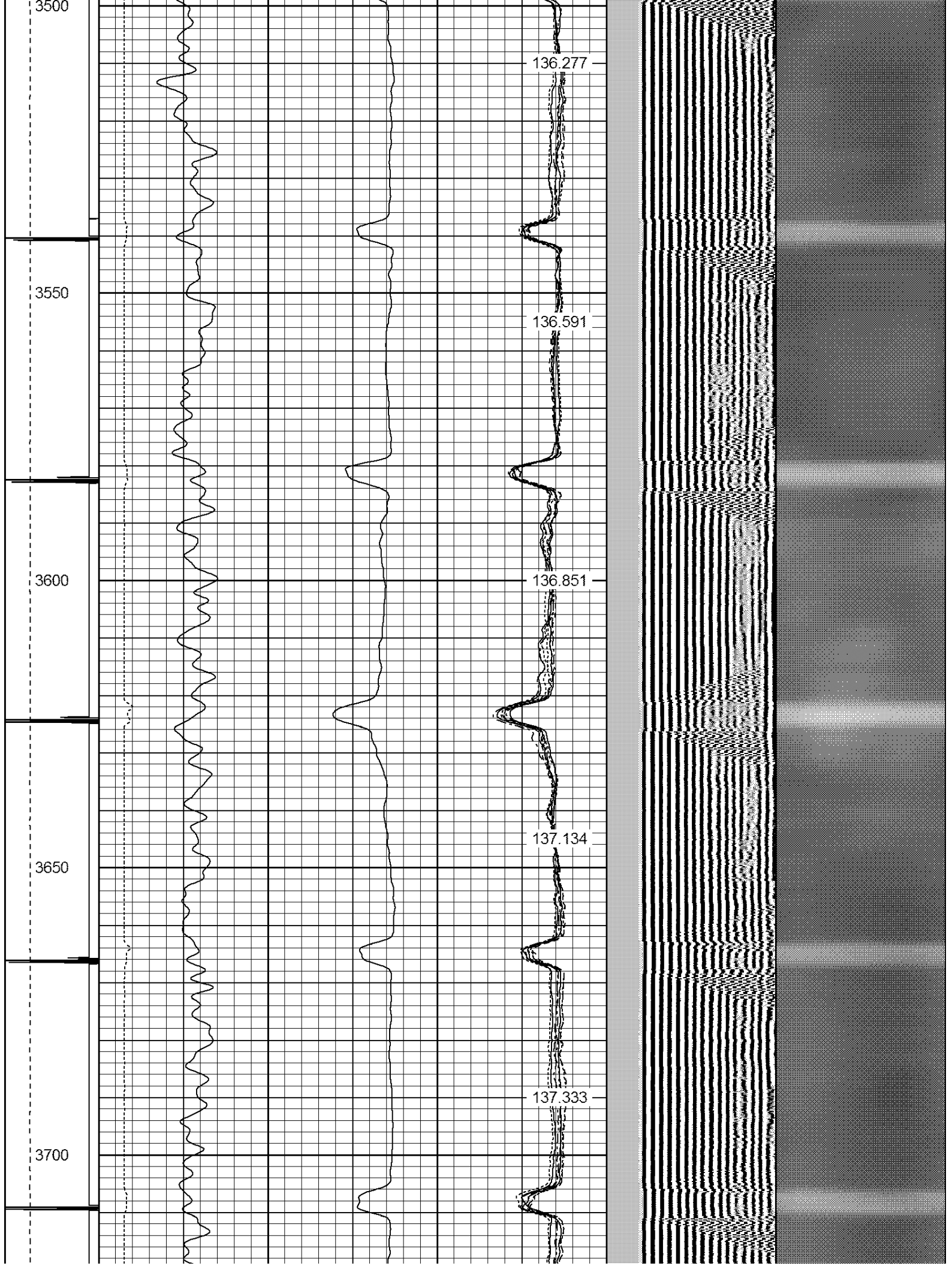


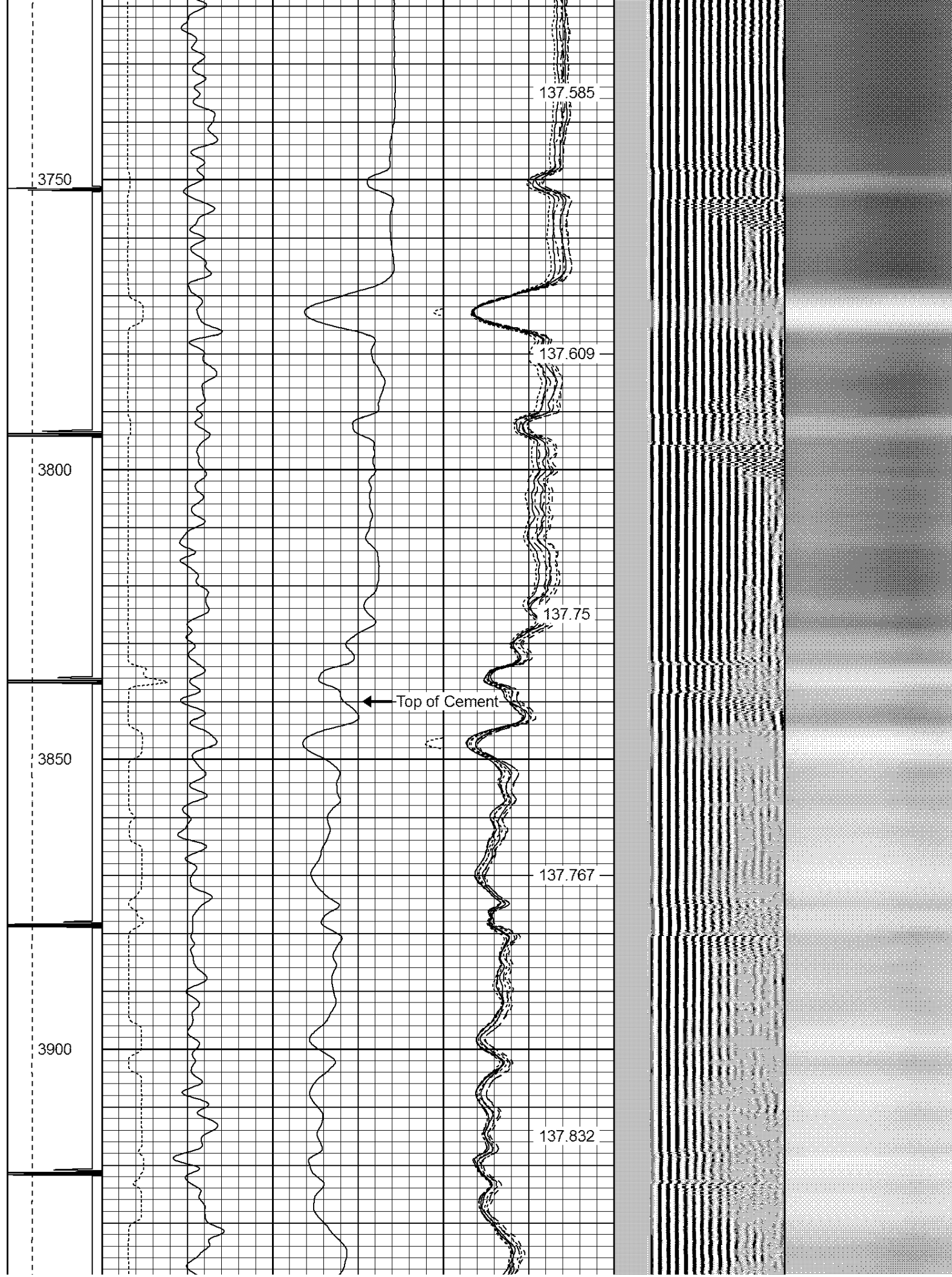


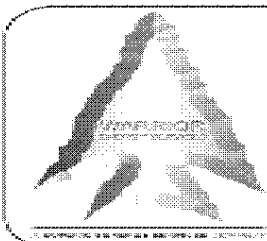
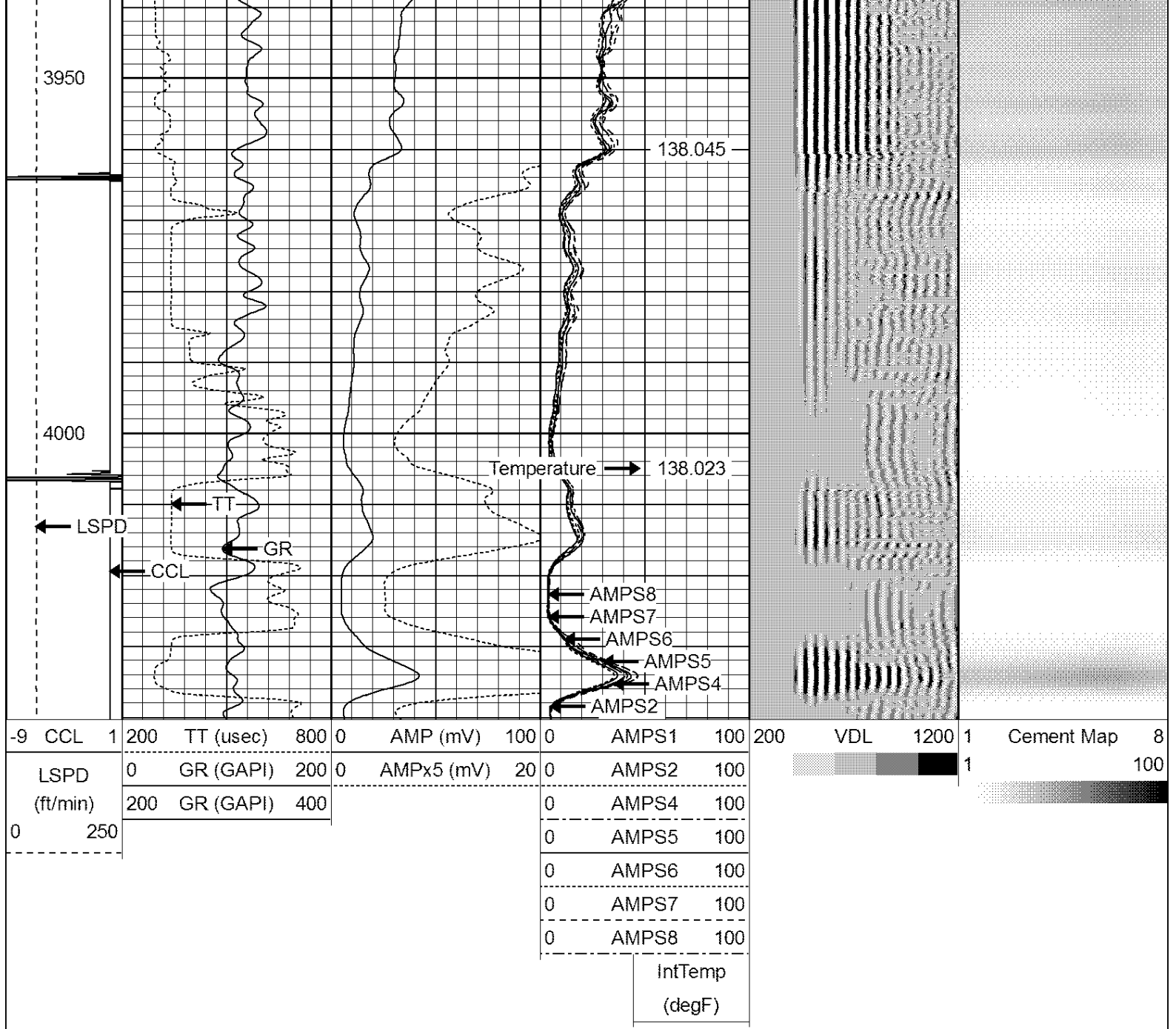












WARRIOR
ENERGY SERVICES

Company KERR-McGEE OIL & GAS ONSHORE LP
Well MARTIN T HART "E" GAS UNIT # 1
Field WATTENBERG
County WELD
State COLORADO